



<http://www.ebiz-tcf.eu>

## IMPLEMENTATION GUIDE

includes COMPARISON BETWEEN CURRENT and LAST  
PREVIOUSLY RELEASED VERSION  
TRANSACTION "YARN QUALITY REPORT"

Version: v2018-1

Date of release: 18/7/2019

Document code: G075rv

technical Documentation: <http://www.ebiz.enea.it>

XML Schemas repository: <http://www.ebiz.enea.it/moda-ml/repository/schema/v2018-1/default.asp>

Guides repository: <http://www.ebiz.enea.it/moda-ml/repository/guide/v2018-1/default.asp>

Guide filename: G075rv-eBIZ-YarnQualityReport.pdf

# 1. BUSINESS DESCRIPTION

## 1.1 Scope

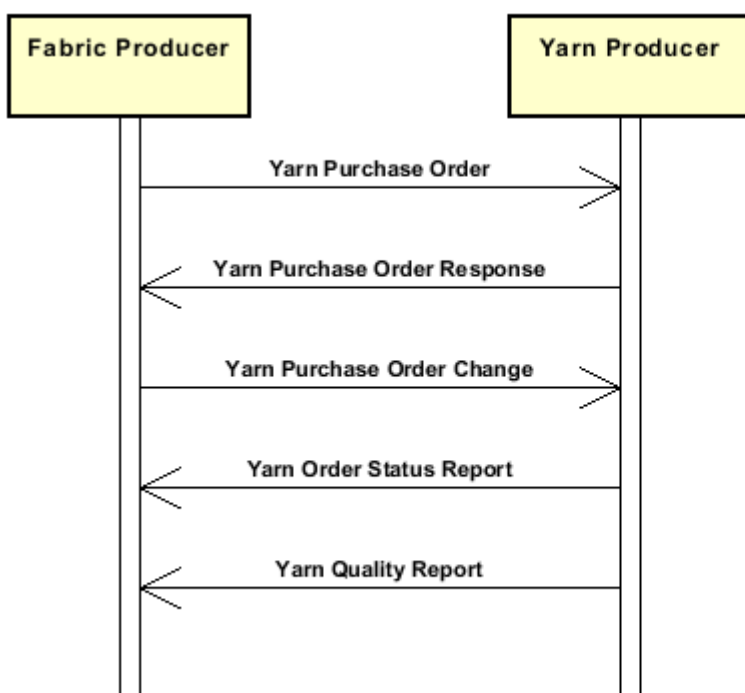
Rarely, and usually when problems arise at the weaving mill, the Client can ask to receive an external Laboratory test report to assess the values given by the Manufacturer or to evaluate further parameters. In such case the Laboratory, after the manufacturing, sends a quality report that certify the manufacturing characteristics and the mechanical-physical-chemical properties of the batch to be delivered, giving the actual values of the construction and quality parameters agreed upon

## 1.2 Generalities

Rarely, and usually when problems arise at the weaving mill, the Client can request to an external Laboratory either the check of the values given by the Manufacturer or the evaluation of further parameters. In such case the Laboratory sends a quality report that certify the manufacturing characteristics and the mechanical-physical-chemical properties through the actual values of the concerned parameters.

## 1.3. Possible scenario

Purchase of yarns



## 2. IMPLEMENTATION GUIDE

### 2.1 General structure of XML document

All the business data that can be exchanged through this class of documents are shown in the following "document structure", that provides a simplified vision of the Schema.

In particular:

- the two numbers following each element define its "cardinality" (minimum and maximum number of occurrences); the minimum equal zero indicates that the element is optional, the minimum greater than zero indicates that is mandatory;
- the bold character denotes the complex elements (aggregates of simple elements) that were built for the sake of functionality and re-usability of some complex informations sets. The child elements in each parent element are easily spotted as "indented";
- the symbol "@" denotes an attribute of the preceding element; here "the usage indicator (optional, required, ...)" is shown in square brackets.

#### Legenda

- N: new element
- U: updated properties
- P: changes in children
- p: is a changed child
- A: changes in attributes
- a: is a new or changed attribute
- \*: is a subtype

### Structure

```
YARNQualityRpt (P)
@msgfunction [Optional]
@version [Optional] [Default= 2018-1]
@useProfile [Optional]
| TQheader 1-1 (P)
| | msgN 1-1
| | - choose -
| | msgID 0-1
| | - or -
| | docID 0-1
| | @numberingOrg [Optional]
| | - end choose -
| | msgDate 1-1
| | @dateForm [Optional]
| | refDoc 0-9 (pP)
| | @docType [Required]
| | | docID 1-2 (p)
| | | @numberingOrg [Optional]
| | | docDate 0-1
| | | @dateForm [Optional]
| | | season 0-1 (A)
| | | @numberingOrg [Optional] (a)
| | | @codeList [Optional] (a)
| | | @listName [Optional] (a)
| | | @listVersion [Optional] (a)
| | | itemID 0-1 (U)
| | | attachment 0-1 (N)
| | | @uid [Optional]
| | | | fileName 0-1 (N)
| | | | @numberingOrg [Optional] (a)
```

```

| | | binaryObject 0-1 (N)
| | | @format [Optional] (N)
| | | @mime [Optional] (N)
| | | @encoding [Optional] (N)
| | | @characterSet [Optional] (N)
| | | externalReference 0-99 (N)
| | | | uri 1-1 (N)
| | | | @isURL [Optional] [Default= true] (Na)
| | | | mimeTypeCode 0-1 (N)
| | | | formatCode 0-1 (N)
| | | | encodingCode 0-1 (N)
| | | | characterSetCode 0-1 (N)
| buyer 1-1 (AP)
| @logo [Optional]
| @sender [Optional] (a*)
| | id 1-1 (p)
| | | @numberingOrg [Optional]
| | additionalIdentifier 0-9 (N)
| | | @numberingOrg [Optional] (a)
| | | @idQualifier [Optional] (Na)
| | legalName 0-1 (U)
| | dept 0-1
| | subDept 0-1 (N)
| | person 0-1
| | | @email [Optional]
| | | @phone [Optional]
| | | @fax [Optional]
| | street 0-1
| | city 0-1
| | subCountry 0-1
| | country 0-1
| | postCode 0-1
| supplier 1-1 (AP)
| @logo [Optional]
| @sender [Optional] (a*)
| | id 1-1
| | | @numberingOrg [Optional]
| | additionalIdentifier 0-9 (N)
| | | @numberingOrg [Optional] (a)
| | | @idQualifier [Optional] (Na)
| | legalName 0-1 (U)
| | dept 0-1
| | subDept 0-1 (N)
| | person 0-1
| | | @email [Optional]
| | | @phone [Optional]
| | | @fax [Optional]
| | street 0-1
| | city 0-1
| | subCountry 0-1
| | country 0-1
| | postCode 0-1
| thirdParty 0-5 (AP)
| @VAT [Optional]
| @role [Required]
| @sender [Optional] (a*)
| | id 1-1
| | | @numberingOrg [Optional]
| | legalName 0-1 (U)
| | dept 0-1
| | subDept 0-1 (N)

```

- | | person 0-1
- | | @email [Optional]
- | | @phone [Optional]
- | | @fax [Optional]
- | | street 0-1
- | | city 0-1
- | | subCountry 0-1
- | | country 0-1
- | | postCode 0-1
- | note 0-99
- | | @numberingOrg [Optional]
- | | @codeList [Optional]
- | | @noteLabel [Optional]

**yarnTecSheet 1-unbounded (P)**

**refDoc 0-9 (P)**

- | | @docType [Required]
- | | docID 1-2 (p)
- | | @numberingOrg [Optional]
- | | docDate 0-1
- | | @dateForm [Optional]
- | | season 0-1 (A)
- | | @numberingOrg [Optional] (a)
- | | @codeList [Optional] (a)
- | | @listName [Optional] (a)
- | | @listVersion [Optional] (a)
- | | itemID 0-1 (U)

**attachment 0-1 (N)**

- | | @uid [Optional]
- | | fileName 0-1 (N)
- | | @numberingOrg [Optional]
- | | binaryObject 0-1 (N)
- | | @format [Optional] (N)
- | | @mime [Optional] (N)
- | | @encoding [Optional] (N)
- | | @characterSet [Optional] (N)

**externalReference 0-99 (N)**

- | | uri 1-1 (N)
- | | @isURL [Optional] [Default= true] (Na)
- | | mimeTypeCode 0-1 (N)
- | | formatCode 0-1 (N)
- | | encodingCode 0-1 (N)
- | | characterSetCode 0-1 (N)

**yarnIdentity 0-1 (P)**

- | | yarnNameSupplier 1-1 (U)
- | | yarnNameBuyer 0-1 (U)
- | | tradeMark 0-1
- | | season 0-1 (A)
- | | @numberingOrg [Optional] (a)
- | | @codeList [Optional] (a)
- | | @listName [Optional] (a)
- | | @listVersion [Optional] (a)

**yarnCompos 0-1**

- | | percCompos 1-9
- | | @fibre [Required]

**fibrePD 0-9**

- | | @fibre [Required]
- | | length 0-1
- | | @um [Required]
- | | diameter 0-1
- | | @um [Optional]

| country 0-1  
 yarnClass 0-1  
 yarnKind 0-1  
 yarnCount 0-1  
 @countSystem [Required]  
 @CV [Optional]  
**yarnTwist 0-1**  
 | twistDirection 1-1  
 | qty 0-1  
 | @um [Required]  
 moistRegain 0-1  
**yarnCode 0-2 (P)**  
 @numberingOrg [Optional] [Default= CL]  
 | art 1-1 (U)  
 | @numberingOrg [Optional]  
 | @codeList [Optional]  
 | @listName [Optional]  
 | @listVersion [Optional]  
 color 0-1  
 | @numberingOrg [Optional]  
 | @codeList [Optional]  
 | @listName [Optional]  
 | @listVersion [Optional]  
 added 0-9  
 | @numberingOrg [Optional]  
 | @addType [Optional]  
 description 0-unbounded (AU)  
 | @ln [Optional] (N)  
 customsStat 0-1  
 yarnComWeight 0-1  
 @um [Required]  
 standardPack 0-1  
 @reelType [Optional]  
 yarnReelQty 0-1  
 @um [Required]  
 minLot 0-1  
 @um [Required]  
 minLotExclusive 0-1  
 @um [Required]  
 optLot 0-9  
 @um [Optional]  
 avgDeliveryDD 0-1  
 lotN 0-1  
 @numberingOrg [Optional]  
 dyeN 0-1  
 @numberingOrg [Optional]  
 price 0-2 (AU)  
 @um [Optional]  
 @priceQualifier [Optional] [Default= NET]  
 @currency [Optional] (a)  
 extendedDescription 0-unbounded (N)  
 @ln [Optional] (N)  
 note 0-99  
 @numberingOrg [Optional]  
 @codeList [Optional]  
 @noteLabel [Optional]  
**yarnManufacture 0-1 (P)**  
**yarnPly 0-1**  
 | plyWork 1-1  
 | plyN 0-1  
**yarnJobSeq 0-1**

- | yarnJob 1-19
- dyeProcess 0-1
- dyeStuff 0-1
- yarnColorFastness 0-99**
- @colorType [Required]
- | yarnCFTest 1-1
- | specValue 1-1
- | @um [Optional]
- | @source [Optional]
- | @method [Optional]
- | @application [Optional]
- | @CV [Optional]
- colorCard 0-1**
- colorCardItem 1-unbounded (P)**
- | color 1-2
- | @numberingOrg [Optional]
- | @codeList [Optional]
- | @listName [Optional]
- | @listVersion [Optional]
- | **CIELab 0-unbounded**
- | @illuminant [Optional]
- | @standardObserver [Optional]
- | L 1-1
- | a 1-1
- | b 1-1
- | **refDoc 0-1 (P)**
- | @docType [Required]
- | docID 1-2 (p)
- | @numberingOrg [Optional]
- | docDate 0-1
- | @dateForm [Optional]
- | season 0-1 (A)
- | @numberingOrg [Optional] (a)
- | @codeList [Optional] (a)
- | @listName [Optional] (a)
- | @listVersion [Optional] (a)
- | itemID 0-1 (U)
- | **attachment 0-1 (N)**
- | @uid [Optional]
- | fileName 0-1 (N)
- | @numberingOrg [Optional] (a)
- | binaryObject 0-1 (N)
- | @format [Optional] (Na)
- | @mime [Optional] (Na)
- | @encoding [Optional] (Na)
- | @characterSet [Optional] (Na)
- | **externalReference 0-99 (N)**
- | uri 1-1 (N)
- | @isURL [Optional] [Default= true] (Na)
- | mimeTypeCode 0-1 (N)
- | formatCode 0-1 (N)
- | encodingCode 0-1 (N)
- | characterSetCode 0-1 (N)
- | description 0-unbounded (AU)
- | @In [Optional] (N)
- note 0-99
- @numberingOrg [Optional]
- @codeList [Optional]
- @noteLabel [Optional]
- yarnQuality 0-1 (P)**
- | **yarnQTest 1-99 (Pp)**

			yarnQTestType 1-1 (N)
			specValue 0-1
			@um [Optional]
			@source [Optional]
			@method [Optional]
			@application [Optional]
			@CV [Optional]
			tolerance 0-1
			@um [Required]
			pcTolerance 0-1
			@um [Optional]
			comply 0-1
		note 0-99	
			@numberingOrg [Optional]
			@codeList [Optional]
			@noteLabel [Optional]



## 2.2 Detailed description of document elements

Following tables show all elements (complex and simple) used in this document. Description includes: 1) element's information: xml tag, name, brief description, data type and syntax constraints; 2) information about use of the element in a particular position in the document: xpath and possible associated notes.

### 2.2.1 Complex elements (Aggregate Business Information Entities)

Complex elements are those elements whose content is composed of other elements (childs). Complex elements are alphabetically ordered.

<b>attachment</b>	an attached document. An attachment can refer to an external document or be included with the document being exchanged (XPath YARNQualityRpt/yarnTecSheet/refDoc/attachment) 0-1 (N) (XPath YARNQualityRpt/TQheader/refDoc/attachment) 0-1 (N) (XPath YARNQualityRpt/yarnTecSheet/yarnManufacture/colorCard/colorCardItem/refDoc/attachment) 0-1 (N)
<b>buyer</b>	details of the Buyer (party that buys the good or service that is object of the current collaborative process) - base type: Nad, (XPath YARNQualityRpt/TQheader/buyer) 1-1 (AP)
<b>CIELab</b>	color point in the CIELab color space (XPath YARNQualityRpt/yarnTecSheet/yarnManufacture/colorCard/colorCardItem/CIELab) 0-unbounded
<b>colorCard</b>	color card for a textile product (XPath YARNQualityRpt/yarnTecSheet/yarnManufacture/colorCard) 0-1
<b>colorCardItem</b>	item of the color card (XPath YARNQualityRpt/yarnTecSheet/yarnManufacture/colorCard/colorCardItem) 1-unbounded (P)
<b>externalReference</b>	details about an external object, such as a document stored at a remote location (XPath YARNQualityRpt/yarnTecSheet/yarnManufacture/colorCard/colorCardItem/refDoc/attachment/externalReference) 0-99 (N) (XPath YARNQualityRpt/yarnTecSheet/refDoc/attachment/externalReference) 0-99 (N) (XPath YARNQualityRpt/TQheader/refDoc/attachment/externalReference) 0-99 (N)
<b>fibrePD</b>	physical data of a textile fibre (XPath YARNQualityRpt/yarnTecSheet/yarnIdentity/fibrePD) 0-9
<b>refDoc</b>	identification of a document and of an item thereof, to which the message makes reference (XPath YARNQualityRpt/yarnTecSheet/refDoc) 0-9 (P) (XPath YARNQualityRpt/TQheader/refDoc) 0-9 (pP) (XPath YARNQualityRpt/yarnTecSheet/yarnManufacture/colorCard/colorCardItem/refDoc) 0-1 (P) - note: <i>here the CxF3 file can be referenced</i>
<b>supplier</b>	details of the Supplier (party that supplies the good or service that is object of the current collaborative process) - base type: Nad, (XPath YARNQualityRpt/TQheader/supplier) 1-1 (AP)
<b>thirdParty</b>	details of the Third Party, different from Sender and Receiver of the document - base type: Nad, (XPath YARNQualityRpt/TQheader/thirdParty) 0-5 (AP)

	- note: <i>in this case the only permitted third Party is the Controller (role="CO" )</i>
<b>TQheader</b>	header of the TEXTILES QUALITY REPORT. (XPath YARNQualityRpt/TQheader) 1-1 (P) - note: <i>in can be specified the Laboratory where the tests have been carried out</i>
<b>yarnCode</b>	full codification of a yarn product (XPath YARNQualityRpt/yarnTecSheet/yarnIdentity/yarnCode) 0-2 (P)
<b>yarnColorFastness</b>	color fastness data for a yarn (XPath YARNQualityRpt/yarnTecSheet/yarnManufacture/yarnColorFastness) 0-99
<b>yarnCompos</b>	fibrous composition of a yarn product (XPath YARNQualityRpt/yarnTecSheet/yarnIdentity/yarnCompos) 0-1
<b>yarnIdentity</b>	set of data that univocally identify the yarn article and any classification or commercial information (XPath YARNQualityRpt/yarnTecSheet/yarnIdentity) 0-1 (P)
<b>yarnJobSeq</b>	operations undergone in the manufacturing of a yarn (XPath YARNQualityRpt/yarnTecSheet/yarnManufacture/yarnJobSeq) 0-1
<b>yarnManufacture</b>	set of data that specify the construction details of the yarn (XPath YARNQualityRpt/yarnTecSheet/yarnManufacture) 0-1 (P)
<b>yarnPly</b>	plying characteristics of a yarn (XPath YARNQualityRpt/yarnTecSheet/yarnManufacture/yarnPly) 0-1
<b>yarnQTest</b>	parameter related to the quality of yarn - base type: string, (XPath YARNQualityRpt/yarnTecSheet/yarnQuality/yarnQTest) 1-99 (Pp)
<b>yarnQuality</b>	set of data that specify the quality data of the yarn (XPath YARNQualityRpt/yarnTecSheet/yarnQuality) 0-1 (P)
<b>yarnTecSheet</b>	technical sheet of the yarn (XPath YARNQualityRpt/yarnTecSheet) 1-unbounded (P)
<b>yarnTwist</b>	twist characteristics of yarn (XPath YARNQualityRpt/yarnTecSheet/yarnIdentity/yarnTwist) 0-1

## 2.2.2 Simple elements (Basic Business Information Entities)

Simple elements are those elements whose content is characterized by a data type plus a domain of possible values. Simple elements are alphabetically ordered.

a	"a" dimension of the CIELab color system - base type: decimal, (XPath YARNQualityRpt/yarnTecSheet/yarnManufacture/colorCard/colorCardItem/CIELab/a) 1-1
added	additional code of the product (complementing the formers) - base type: string, max length: 80, (XPath YARNQualityRpt/yarnTecSheet/yarnIdentity/yarnCode/added) 0-9 - note: <i>here an additional codification (see table T44) can be specified</i>
additionalIdentifier	additional identification code of a Party, for example customs registries or others - base type: string, max length: 15, (XPath YARNQualityRpt/TQheader/buyer/additionalIdentifier) 0-9 (N)

	<p>- note: identifiers for example for exports, such as MID (Manufacturer Identification Code), EORI (E.O.R.I. - Economic Operator Registration and Identification)</p> <p>(XPath YARNQualityRpt/TQheader/supplier/additionalIdentifier) 0-9 (N)</p> <p>- note: identifiers for example for exports, such as MID (Manufacturer Identification Code), EORI (E.O.R.I. - Economic Operator Registration and Identification)</p>
@addType	<p>qualifier of the additional coding of a product</p> <p>- base type: string, cod. table: T44</p> <p><a href="http://www.ebiz.enea.it/moda-ml/repository/codelist/v2018-1/gc_T44.xml">http://www.ebiz.enea.it/moda-ml/repository/codelist/v2018-1/gc_T44.xml</a></p> <p>(XPath YARNQualityRpt/yarnTecSheet/yarnIdentity/yarnCode/added/@addType) [Optional]</p> <p>- nota: addType allows the clarification of the meaning of the added element content; it is strongly suggested to use it always.</p>
@application	<p>force or similar condition (e.g. no. of revolutions) applied in a test as specified within the standard</p> <p>- base type: string, max length: 15,</p> <p>(XPath YARNQualityRpt/yarnTecSheet/yarnQuality/yarnQTest/specValue/@application) [Optional]</p> <p>(XPath YARNQualityRpt/yarnTecSheet/yarnManufacture/yarnColorFastness/specValue/@application) [Optional]</p>
art	<p>article number of the product</p> <p>- base type: string, max length: 80,</p> <p>(XPath YARNQualityRpt/yarnTecSheet/yarnIdentity/yarnCode/art) 1-1 (U)</p>
avgDeliveryDD	<p>average time (workdays) between order receipt and delivery of an article, specified by the Supplier</p> <p>- base type: duration,</p> <p>(XPath YARNQualityRpt/yarnTecSheet/yarnIdentity/avgDeliveryDD) 0-1</p>
b	<p>"b" dimension of the CIELab color system</p> <p>- base type: decimal,</p> <p>(XPath YARNQualityRpt/yarnTecSheet/yarnManufacture/colorCard/colorCardItem/CIELab/b) 1-1</p>
binaryObject	<p>a binary large object containing an attached document, Coding 'base64Binary' is recommended.</p> <p>- base type: base64Binary,</p> <p>(XPath YARNQualityRpt/yarnTecSheet/yarnManufacture/colorCard/colorCardItem/refDoc/attachment/binaryObject) 0-1 (N)</p> <p>(XPath YARNQualityRpt/yarnTecSheet/refDoc/attachment/binaryObject) 0-1 (N)</p> <p>(XPath YARNQualityRpt/TQheader/refDoc/attachment/binaryObject) 0-1 (N)</p>
@characterSet	<p>the character set of the binary object (examples UTF-8, UTF-16, Windows-1252, ISO-8859-7,..)</p> <p>- base type: normalizedString,</p> <p>(XPath YARNQualityRpt/yarnTecSheet/refDoc/attachment/binaryObject/@characterSet) [Optional] (N)</p> <p>(XPath YARNQualityRpt/TQheader/refDoc/attachment/binaryObject/@characterSet) [Optional] (N)</p> <p>(XPath YARNQualityRpt/yarnTecSheet/yarnManufacture/colorCard/colorCardItem/refDoc/attachment/binaryObject/@characterSet) [Optional] (Na)</p>
characterSetCode	<p>the character set of an external document (examples UTF-8, UTF-16, Windows-1252, ISO-8859-7,..)</p> <p>- base type: normalizedString,</p> <p>(XPath YARNQualityRpt/yarnTecSheet/refDoc/attachment/externalReference/characterSetCode) 0-1 (N)</p> <p>(XPath YARNQualityRpt/TQheader/refDoc/attachment/externalReference/characterSetCode) 0-1 (N)</p>

	(XPath YARNQualityRpt/yarnTecSheet/yarnManufacture/ colorCard/colorCardItem/refDoc/attachment/externalReference/characterSet Code) 0-1 (N)
city	name of the city (town, village) - base type: string, max length: 40, (XPath YARNQualityRpt/TQheader/thirdParty/city) 0-1 (XPath YARNQualityRpt/TQheader/supplier/city) 0-1 (XPath YARNQualityRpt/TQheader/buyer/city) 0-1
@codeList	it specifies the URL where the list of codes used to make an instance of the element can be found - base type: string, max length: 255, (XPath YARNQualityRpt/TQheader/note/@codeList) [Optional] - nota: <i>must be used to provide (URL) the list of codes used in "noteLabel"</i> (XPath YARNQualityRpt/yarnTecSheet/yarnIdentity/ yarnCode/color/@codeList) [Optional] - nota: <i>this attribute should be used either single or coupled with "listName" and "listVersion"</i> (XPath YARNQualityRpt/yarnTecSheet/yarnIdentity/note/@codeList) [Optional] - nota: <i>must be used to provide (URL) the list of codes used in "noteLabel"</i> (XPath YARNQualityRpt/TQheader/refDoc/season/@codeList) [Optional] (a) - nota: <i>this attribute should be used either single or coupled with "listName" and "listVersion"</i> (XPath YARNQualityRpt/yarnTecSheet/yarnQuality/note/@codeList) [Optional] - nota: <i>must be used to provide (URL) the list of codes used in "noteLabel"</i> (XPath YARNQualityRpt/yarnTecSheet/yarnManufacture/note/@codeList) [Optional] - nota: <i>must be used to provide (URL) the list of codes used in "noteLabel"</i> (XPath YARNQualityRpt/yarnTecSheet/yarnIdentity/season/@codeList) [Optional] (a ) - nota: <i>this attribute should be used either single or coupled with "listName" and "listVersion"</i> (XPath YARNQualityRpt/yarnTecSheet/yarnManufacture/ colorCard/colorCardItem/color/@codeList) [Optional] - nota: <i>this attribute should be used either single or coupled with "listName" and "listVersion"</i> (XPath YARNQualityRpt/yarnTecSheet/yarnManufacture/ colorCard/colorCardItem/refDoc/season/@codeList) [Optional] (a) - nota: <i>this attribute should be used either single or coupled with "listName" and "listVersion"</i> (XPath YARNQualityRpt/yarnTecSheet/yarnIdentity/ yarnCode/art/@codeList) [Optional] - nota: <i>at least one out of this attribute and "numberingOrg" should be set</i> (XPath YARNQualityRpt/yarnTecSheet/refDoc/season/@codeList) [Optional] (a) - nota: <i>this attribute should be used either single or coupled with "listName" and "listVersion"</i>
color	colour number of the product, when not included in the model or fabric code - base type: string, max length: 15, (XPath YARNQualityRpt/yarnTecSheet/yarnManufacture/ colorCard/colorCardItem/color) 1-2 - note: <i>multiple color values allowed if they differ for at least one of the numb eringOrg and listName attributes</i> (XPath YARNQualityRpt/yarnTecSheet/yarnIdentity/yarnCode/color) 0-1
@colorType	type of color to which a "color fastness" value refers - base type: string, cod. table: NT26 <a href="http://www.ebiz.enea.it/moda-ml/repository/codelist/v2018-1/gc_NT26.xml">http://www.ebiz.enea.it/moda-ml/repository/codelist/v2018-1/gc_NT26.xml</a> (XPath YARNQualityRpt/yarnTecSheet/yarnManufacture/ yarnColorFastness/@colorType) [Required]
comply	specifies if the experimental value complies with the standard requirement (t arget value) - base type: boolean, (XPath YARNQualityRpt/yarnTecSheet/yarnQuality/yarnQTest/comply) 0-1

country	code of the nation - base type: string, cod. table: T10 <a href="http://www.ebiz.enea.it/moda-ml/repository/codelist/v2018-1/gc_T10.xml">http://www.ebiz.enea.it/moda-ml/repository/codelist/v2018-1/gc_T10.xml</a> (XPath YARNQualityRpt/TQheader/thirdParty/country) 0-1 (XPath YARNQualityRpt/yarnTecSheet/yarnIdentity/fibrePD/country) 0-1 (XPath YARNQualityRpt/TQheader/supplier/country) 0-1 (XPath YARNQualityRpt/TQheader/buyer/country) 0-1
@countSystem	yarn count system - base type: string, cod. table: T55 <a href="http://www.ebiz.enea.it/moda-ml/repository/codelist/v2018-1/gc_T55.xml">http://www.ebiz.enea.it/moda-ml/repository/codelist/v2018-1/gc_T55.xml</a> (XPath YARNQualityRpt/yarnTecSheet/yarnIdentity/yarnCount/@countSystem) [Required]
@currency	currency in which a specified monetary data is expressed - base type: string, cod. table: T9 <a href="http://www.ebiz.enea.it/moda-ml/repository/codelist/v2018-1/gc_T9.xml">http://www.ebiz.enea.it/moda-ml/repository/codelist/v2018-1/gc_T9.xml</a> (XPath YARNQualityRpt/yarnTecSheet/yarnIdentity/price/@currency) [Optional] (a) - nota: <i>Currency referred by the price.</i>
customsStat	statistic code assigned by Customs to a specified product - base type: string, max length: 15, (XPath YARNQualityRpt/yarnTecSheet/yarnIdentity/customsStat) 0-1
@CV	coefficient of variation (CV) of a measurement - base type: decimal, (XPath YARNQualityRpt/yarnTecSheet/yarnQuality/yarnQTest/specValue/@CV) [Optional] (XPath YARNQualityRpt/yarnTecSheet/yarnIdentity/yarnCount/@CV) [Optional] (XPath YARNQualityRpt/yarnTecSheet/yarnManufacture/yarnColorFastness/specValue/@CV) [Optional]
@dateForm	format used for the date - base type: string, cod. table: NT29 <a href="http://www.ebiz.enea.it/moda-ml/repository/codelist/v2018-1/gc_NT29.xml">http://www.ebiz.enea.it/moda-ml/repository/codelist/v2018-1/gc_NT29.xml</a> (XPath YARNQualityRpt/yarnTecSheet/yarnManufacture/colorCard/colorCardItem/refDoc/docDate/@dateForm) [Optional] (XPath YARNQualityRpt/TQheader/msgDate/@dateForm) [Optional] (XPath YARNQualityRpt/yarnTecSheet/refDoc/docDate/@dateForm) [Optional] (XPath YARNQualityRpt/TQheader/refDoc/docDate/@dateForm) [Optional]
dept	name or code of a contact department within a Party - base type: string, max length: 40, (XPath YARNQualityRpt/TQheader/buyer/dept) 0-1 (XPath YARNQualityRpt/TQheader/supplier/dept) 0-1 (XPath YARNQualityRpt/TQheader/thirdParty/dept) 0-1
description	free text description. The content of the element must be unique, it might be translated and repeated into more languages (thus no more than one instance for each language). - base type: string, max length: 250, (XPath YARNQualityRpt/yarnTecSheet/yarnIdentity/yarnCode/description) 0-unbounded (AU) - note: <i>Product description</i> (XPath YARNQualityRpt/yarnTecSheet/yarnManufacture/colorCard/colorCardItem/description) 0-unbounded (AU)
diameter	effective diameter of a specified object - base type: decimal, min inclusive: 0, fraction digits: 2, (XPath YARNQualityRpt/yarnTecSheet/yarnIdentity/fibrePD/diameter) 0-1
docDate	date of issue of the referenced document, according to one of the patterns Y YYY-MM-DD, YYYY-MM-DD:HH-MM or YYYY-WW. - base type: string, (XPath YARNQualityRpt/TQheader/refDoc/docDate) 0-1 (XPath YARNQualityRpt/yarnTecSheet/yarnManufacture/colorCard/colorCardItem/refDoc/docDate) 0-1 (XPath YARNQualityRpt/yarnTecSheet/refDoc/docDate) 0-1

docID	<p>identification number of the referenced document SINCE 2008-1 ITS USE I N THE HEADER IS DISCOURAGED (REPLACED BY msgID)</p> <p>- base type: string, max length: 80, (XPath YARNQualityRpt/TQheader/refDoc/docID) 1-2 (p)</p> <hr/> <p>AAAA-WARNING! - text not AVAILABLE n. 245 - In=en (XPath YARNQualityRpt/yarnTecSheet/yarnManufacture/ colorCard/colorCardItem/refDoc/docID) 1-2 (p)</p> <hr/> <p>AAAA-WARNING! - text not AVAILABLE n. 245 - In=en (XPath YARNQualityRpt/yarnTecSheet/refDoc/docID) 1-2 (p)</p> <hr/> <p>AAAA-WARNING! - text not AVAILABLE n. 245 - In=en (XPath YARNQualityRpt/TQheader/docID) 0-1</p>
@docType	<p>type or class to which the referenced document belongs</p> <p>- base type: string, cod. table: T21 <a href="http://www.ebiz.enea.it/moda-ml/repository/codelist/v2018-1/gc_T21.xml">http://www.ebiz.enea.it/moda-ml/repository/codelist/v2018-1/gc_T21.xml</a> (XPath YARNQualityRpt/TQheader/refDoc/@docType) [Required] (XPath YARNQualityRpt/yarnTecSheet/refDoc/@docType) [Required] (XPath YARNQualityRpt/yarnTecSheet/yarnManufacture/ colorCard/colorCardItem/refDoc/@docType) [Required]</p>
dyeN	<p>number of the dyeing batch of a textile product</p> <p>- base type: string, max length: 15, (XPath YARNQualityRpt/yarnTecSheet/yarnIdentity/dyeN) 0-1</p> <p>- note: <i>to be used when the document refers to a specific production batch</i></p>
dyeProcess	<p>dye process applied to the fabric</p> <p>- base type: string, cod. table: T15 <a href="http://www.ebiz.enea.it/moda-ml/repository/codelist/v2018-1/gc_T15.xml">http://www.ebiz.enea.it/moda-ml/repository/codelist/v2018-1/gc_T15.xml</a> (XPath YARNQualityRpt/yarnTecSheet/yarnManufacture/dyeProcess) 0-1</p>
dyeStuff	<p>dye stuff used in the fabric dye process</p> <p>- base type: string, cod. table: T16 <a href="http://www.ebiz.enea.it/moda-ml/repository/codelist/v2018-1/gc_T16.xml">http://www.ebiz.enea.it/moda-ml/repository/codelist/v2018-1/gc_T16.xml</a> (XPath YARNQualityRpt/yarnTecSheet/yarnManufacture/dyeStuff) 0-1</p>
@email	<p>electronic mail address of the contact person within a Party</p> <p>- base type: string, max length: 250, (XPath YARNQualityRpt/TQheader/thirdParty/person/@email) [Optional] (XPath YARNQualityRpt/TQheader/buyer/person/@email) [Optional] (XPath YARNQualityRpt/TQheader/supplier/person/@email) [Optional]</p>
@encoding	<p>specifies the decoding algorithm of the binary object</p> <p>- base type: normalizedString, (XPath YARNQualityRpt/yarnTecSheet/refDoc/attachment/ binaryObject/@encoding) [Optional] (N) (XPath YARNQualityRpt/yarnTecSheet/yarnManufacture/ colorCard/colorCardItem/refDoc/attachment/binaryObject/@encoding) [Optional] (Na) (XPath YARNQualityRpt/TQheader/refDoc/attachment/ binaryObject/@encoding) [Optional] (N)</p>
encodingCode	<p>the encoding/decoding algorithm used with the external object (example is ' base64Binary')</p> <p>- base type: normalizedString, (XPath YARNQualityRpt/yarnTecSheet/yarnManufacture/ colorCard/colorCardItem/refDoc/attachment/externalReference/encodingCode) 0-1 (N) (XPath YARNQualityRpt/TQheader/refDoc/attachment/ externalReference/encodingCode) 0-1 (N) (XPath YARNQualityRpt/yarnTecSheet/refDoc/attachment/ externalReference/encodingCode) 0-1 (N)</p>
extendedDescription	<p>extended free text description. The content of the element must be unique, it might be translated and repeated into more languages (thus no more than one instance for each language). This element might contain HTML code (mu</p>



	<p>st be managed as CDATA)</p> <p>- base type: string, (XPath YARNQualityRpt/yarnTecSheet/yarnIdentity/extendedDescription) 0-unbounded (N)</p> <p>- note: <i>Extended product description</i></p>
@fax	<p>fax number of the contact person within a Party</p> <p>- base type: string, max length: 35, (XPath YARNQualityRpt/TQheader/buyer/person/@fax) [Optional] (XPath YARNQualityRpt/TQheader/thirdParty/person/@fax) [Optional] (XPath YARNQualityRpt/TQheader/supplier/person/@fax) [Optional]</p>
@fibre	<p>type of fibre used in a textile product</p> <p>- base type: string, cod. table: T19 <a href="http://www.ebiz.enea.it/moda-ml/repository/codelist/v2018-1/gc_T19.xml">http://www.ebiz.enea.it/moda-ml/repository/codelist/v2018-1/gc_T19.xml</a> (XPath YARNQualityRpt/yarnTecSheet/yarnIdentity/yarnCompos/percCompos/@fibre) [Required] (XPath YARNQualityRpt/yarnTecSheet/yarnIdentity/fibrePD/@fibre) [Required]</p>
fileName	<p>unique identifier (name) of the file</p> <p>- base type: string, max length: 255, (XPath YARNQualityRpt/yarnTecSheet/refDoc/attachment/fileName) 0-1 (N) (XPath YARNQualityRpt/yarnTecSheet/yarnManufacture/colorCard/colorCardItem/refDoc/attachment/fileName) 0-1 (N) (XPath YARNQualityRpt/TQheader/refDoc/attachment/fileName) 0-1 (N)</p>
@format	<p>the format of the binary content (examples xml, pdf, doc,...)</p> <p>- base type: string, (XPath YARNQualityRpt/yarnTecSheet/refDoc/attachment/binaryObject/@format) [Optional] (N) (XPath YARNQualityRpt/TQheader/refDoc/attachment/binaryObject/@format) [Optional] (N) (XPath YARNQualityRpt/yarnTecSheet/yarnManufacture/colorCard/colorCardItem/refDoc/attachment/binaryObject/@format) [Optional] (Na)</p>
formatCode	<p>the format of the external object (examples xml, pdf, doc,...)</p> <p>- base type: normalizedString, (XPath YARNQualityRpt/TQheader/refDoc/attachment/externalReference/formatCode) 0-1 (N) (XPath YARNQualityRpt/yarnTecSheet/yarnManufacture/colorCard/colorCardItem/refDoc/attachment/externalReference/formatCode) 0-1 (N) (XPath YARNQualityRpt/yarnTecSheet/refDoc/attachment/externalReference/formatCode) 0-1 (N)</p>
id	<p>primary identification code of a Party; it is recommended the format: nation code (ISO 3166) + VAT identification number (11 crt), with the qualifier "numberingOrg"= MF</p> <p>- base type: string, max length: 15, (XPath YARNQualityRpt/TQheader/thirdParty/id) 1-1 (XPath YARNQualityRpt/TQheader/buyer/id) 1-1 (p) (XPath YARNQualityRpt/TQheader/supplier/id) 1-1</p>
@idQualifier	<p>Qualification of the identifier.</p> <p>- base type: string, (XPath YARNQualityRpt/TQheader/supplier/additionalIdentifier/@idQualifier) [Optional] (Na)</p> <p>- nota: <i>this attribute should be used when the numberingOrg attribute is not enough to declare the type of identifier</i> (XPath YARNQualityRpt/TQheader/buyer/additionalIdentifier/@idQualifier) [Optional] (Na)</p> <p>- nota: <i>this attribute should be used when the numberingOrg attribute is not enough to declare the type of identifier</i></p>

@illuminant	<p>CIE light source</p> <p>- base type: string, cod. table: T59  <a href="http://www.ebiz.enea.it/moda-ml/repository/codelist/v2018-1/gc_T59.xml">http://www.ebiz.enea.it/moda-ml/repository/codelist/v2018-1/gc_T59.xml</a>  (XPath YARNQualityRpt/yarnTecSheet/yarnManufacture/colorCard/colorCardItem/CIELab/@illuminant) [Optional]</p>
@isURL	<p>it indicates if the referred element is an URL (true) or not (false)</p> <p>- base type: boolean,  (XPath YARNQualityRpt/yarnTecSheet/refDoc/attachment/externalReference/uri/@isURL) [Optional] [Default= true] (Na)</p> <p>- nota: <i>usage of URLs is recommended</i>  (XPath YARNQualityRpt/yarnTecSheet/yarnManufacture/colorCard/colorCardItem/refDoc/attachment/externalReference/uri/@isURL) [Optional] [Default= true] (Na)</p> <p>- nota: <i>usage of URLs is recommended</i>  (XPath YARNQualityRpt/TQheader/refDoc/attachment/externalReference/uri/@isURL) [Optional] [Default= true] (Na)</p> <p>- nota: <i>usage of URLs is recommended</i></p>
itemID	<p>number of the line/item of the referenced document</p> <p>- base type: string, max length: 40,  (XPath YARNQualityRpt/TQheader/refDoc/itemID) 0-1 (U)  (XPath YARNQualityRpt/yarnTecSheet/yarnManufacture/colorCard/colorCardItem/refDoc/itemID) 0-1 (U)  (XPath YARNQualityRpt/yarnTecSheet/refDoc/itemID) 0-1 (U)</p>
L	<p>"L" value of the CIELab color system</p> <p>- base type: decimal, min inclusive: 0,  (XPath YARNQualityRpt/yarnTecSheet/yarnManufacture/colorCard/colorCardItem/CIELab/L) 1-1</p>
legalName	<p>legal name of a Party</p> <p>- base type: string, max length: 250,  (XPath YARNQualityRpt/TQheader/supplier/legalName) 0-1 (U)  (XPath YARNQualityRpt/TQheader/buyer/legalName) 0-1 (U)  (XPath YARNQualityRpt/TQheader/thirdParty/legalName) 0-1 (U)</p>
length	<p>effective length of a specified object</p> <p>- base type: decimal, min inclusive: 0, fraction digits: 2,  (XPath YARNQualityRpt/yarnTecSheet/yarnIdentity/fibrePD/length) 0-1</p>
@listName	<p>the name of the list of codes used to make an instance of the element (it might be thought as descriptive element, i.e. 'fabric printing technologies', or not, i.e. "T264")</p> <p>- base type: string, max length: 40,  (XPath YARNQualityRpt/yarnTecSheet/yarnManufacture/colorCard/colorCardItem/color/@listName) [Optional]</p> <p>- nota: <i>this attribute should always be used coupled with "numberingOrg"</i>  (XPath YARNQualityRpt/yarnTecSheet/yarnIdentity/yarnCode/art/@listName) [Optional]</p> <p>- nota: <i>this attribute should always be used coupled with "numberingOrg"</i>  (XPath YARNQualityRpt/yarnTecSheet/yarnIdentity/yarnCode/color/@listName) [Optional]</p> <p>- nota: <i>this attribute should always be used coupled with "numberingOrg"</i>  (XPath YARNQualityRpt/yarnTecSheet/yarnManufacture/colorCard/colorCardItem/refDoc/season/@listName) [Optional] (a)</p> <p>- nota: <i>this attribute should always be used coupled with "numberingOrg"</i>  (XPath YARNQualityRpt/yarnTecSheet/yarnIdentity/season/@listName) [Optional] (a)</p> <p>- nota: <i>this attribute should always be used coupled with "numberingOrg"</i>  (XPath YARNQualityRpt/TQheader/refDoc/season/@listName) [Optional] (a)</p> <p>- nota: <i>this attribute should always be used coupled with "numberingOrg"</i>  (XPath YARNQualityRpt/yarnTecSheet/refDoc/season/@listName) [Optional] (a)</p> <p>- nota: <i>this attribute should always be used coupled with "numberingOrg"</i></p>



<p>@listVersion</p>	<p>it specifies the version of the list of codes used to make an instance of the element</p> <ul style="list-style-type: none"> <li>- base type: string, max length: 6, (XPath YARNQualityRpt/yarnTecSheet/yarnIdentity/yarnCode/art/@listVersion) [Optional]</li> <li>- nota: <i>this attribute should always be used coupled with “numberingOrg” and “listName”</i> (XPath YARNQualityRpt/yarnTecSheet/yarnManufacture/colorCard/colorCardItem/refDoc/season/@listVersion) [Optional] (a)</li> <li>- nota: <i>this attribute should always be used coupled with “numberingOrg” and “listName”</i> (XPath YARNQualityRpt/yarnTecSheet/yarnManufacture/colorCard/colorCardItem/color/@listVersion) [Optional]</li> <li>- nota: <i>this attribute should always be used coupled with “numberingOrg” and “listName”</i> (XPath YARNQualityRpt/yarnTecSheet/refDoc/season/@listVersion) [Optional] (a)</li> <li>- nota: <i>this attribute should always be used coupled with “numberingOrg” and “listName”</i> (XPath YARNQualityRpt/yarnTecSheet/yarnIdentity/season/@listVersion) [Optional] (a)</li> <li>- nota: <i>this attribute should always be used coupled with “numberingOrg” and “listName”</i> (XPath YARNQualityRpt/yarnTecSheet/yarnIdentity/yarnCode/color/@listVersion) [Optional]</li> <li>- nota: <i>this attribute should always be used coupled with “numberingOrg” and “listName”</i> (XPath YARNQualityRpt/TQheader/refDoc/season/@listVersion) [Optional] (a)</li> <li>- nota: <i>this attribute should always be used coupled with “numberingOrg” and “listName”</i></li> </ul>
<p>@ln</p>	<p>Language code.</p> <ul style="list-style-type: none"> <li>- base type: string, cod. table: NT60 <a href="http://www.ebiz.enea.it/moda-ml/repository/codelist/v2018-1/gc_NT60.xml">http://www.ebiz.enea.it/moda-ml/repository/codelist/v2018-1/gc_NT60.xml</a></li> <li>(XPath YARNQualityRpt/yarnTecSheet/yarnIdentity/extendedDescription/@ln) [Optional] (N)</li> <li>(XPath YARNQualityRpt/yarnTecSheet/yarnIdentity/yarnCode/description/@ln) [Optional] (N)</li> <li>(XPath YARNQualityRpt/yarnTecSheet/yarnManufacture/colorCard/colorCardItem/description/@ln) [Optional] (N)</li> </ul>
<p>@logo</p>	<p>company logo (URL of the image jpeg or gif). It is recommended that the width of the image does not exceed 640 pixel.</p> <ul style="list-style-type: none"> <li>- base type: string, max length: 255, (XPath YARNQualityRpt/TQheader/supplier/@logo) [Optional]</li> <li>(XPath YARNQualityRpt/TQheader/buyer/@logo) [Optional]</li> </ul>
<p>lotN</p>	<p>lot number of a product or batch number of the raw material</p> <ul style="list-style-type: none"> <li>- base type: string, max length: 15, (XPath YARNQualityRpt/yarnTecSheet/yarnIdentity/lotN) 0-1</li> <li>- note: <i>to be used when the document refers to a specific production batch</i></li> </ul>
<p>@method</p>	<p>standard protocol or method employed in a test to evaluate a characteristic or a parameter</p> <ul style="list-style-type: none"> <li>- base type: string, max length: 80, (XPath YARNQualityRpt/yarnTecSheet/yarnManufacture/yarnColorFastness/specValue/@method) [Optional]</li> <li>(XPath YARNQualityRpt/yarnTecSheet/yarnQuality/yarnQTest/specValue/@method) [Optional]</li> </ul>
<p>@mime</p>	<p>the mime type of the binary object</p> <ul style="list-style-type: none"> <li>- base type: normalizedString, (XPath YARNQualityRpt/TQheader/refDoc/attachment/binaryObject/@mime) [Optional] (N)</li> <li>(XPath YARNQualityRpt/yarnTecSheet/refDoc/attachment/binaryObject/@mime) [Optional] (N)</li> </ul>

	(XPath YARNQualityRpt/yarnTecSheet/yarnManufacture/colorCard/colorCardItem/refDoc/attachment/binaryObject/@mime) [Optional] (Na)
mimeCode	mime type of the external object - base type: normalizedString, (XPath YARNQualityRpt/TQheader/refDoc/attachment/externalReference/mimeCode) 0-1 (N) <hr/> AAAA-WARNING! - text not AVAILABLE n. 245 - In=en (XPath YARNQualityRpt/yarnTecSheet/refDoc/attachment/externalReference/mimeCode) 0-1 (N) <hr/> AAAA-WARNING! - text not AVAILABLE n. 245 - In=en (XPath YARNQualityRpt/yarnTecSheet/yarnManufacture/colorCard/colorCardItem/refDoc/attachment/externalReference/mimeCode) 0-1 (N) <hr/> AAAA-WARNING! - text not AVAILABLE n. 245 - In=en
minLot	minimum order quantity of a product requested by the Supplier - base type: decimal, min inclusive: 0, fraction digits: 2, (XPath YARNQualityRpt/yarnTecSheet/yarnIdentity/minLot) 0-1
minLotExclusive	minimum order quantity of a product requested by the Supplier for an exclusive color - base type: decimal, min inclusive: 0, fraction digits: 2, (XPath YARNQualityRpt/yarnTecSheet/yarnIdentity/minLotExclusive) 0-1
moistRegain	percent moisture regain by the fibres - base type: decimal, (XPath YARNQualityRpt/yarnTecSheet/yarnIdentity/moistRegain) 0-1
msgDate	date of issue of the present message (xml document), according to one of the patterns YYYY-MM-DD, YYYY-MM-DD:HH-MM or YYYY-WW. - base type: string, (XPath YARNQualityRpt/TQheader/msgDate) 1-1
@msgfunction	function performed by the present message with regards to the transmission - base type: string, cod. table: NT18 <a href="http://www.ebiz.enea.it/moda-ml/repository/codelist/v2018-1/gc_NT18.xml">http://www.ebiz.enea.it/moda-ml/repository/codelist/v2018-1/gc_NT18.xml</a> (XPath YARNQualityRpt/@msgfunction) [Optional]
msgID	key identifier of the business document in the information system of the issuing Party. In case of more despatches of the same business document, it is unchanged. - base type: string, max length: 35, (XPath YARNQualityRpt/TQheader/msgID) 0-1
msgN	identification number given to the message (xml document) by its issuer. In case of more despatches of the same business document, it changes. - base type: string, max length: 35, (XPath YARNQualityRpt/TQheader/msgN) 1-1
note	free text or structured (computer processing) note. For note structuring use the attributes "noteLabel" and "codelist" - base type: string, max length: 350, (XPath YARNQualityRpt/yarnTecSheet/yarnManufacture/note) 0-99 (XPath YARNQualityRpt/yarnTecSheet/yarnQuality/note) 0-99 (XPath YARNQualityRpt/yarnTecSheet/yarnIdentity/note) 0-99 (XPath YARNQualityRpt/TQheader/note) 0-99
@noteLabel	subject qualifier of a note - base type: string, max length: 35, (XPath YARNQualityRpt/TQheader/note/@noteLabel) [Optional] - nota: <i>must be used to qualify the subject of the note</i> (XPath YARNQualityRpt/yarnTecSheet/yarnManufacture/note/@noteLabel) [Optional]

	<p>- nota: <i>must be used to qualify the subject of the note</i> (XPath YARNQualityRpt/yarnTecSheet/yarnIdentity/note/@noteLabel) [Optional]</p> <p>- nota: <i>must be used to qualify the subject of the note</i> (XPath YARNQualityRpt/yarnTecSheet/yarnQuality/note/@noteLabel) [Optional]</p> <p>- nota: <i>must be used to qualify the subject of the note</i></p>
@numberingOrg	<p>code specifying the organisation who has created or owns the coding or numbering system</p> <p>- base type: string, cod. table: NT6 <a href="http://www.ebiz.enea.it/moda-ml/repository/codelist/v2018-1/gc_NT6.xml">http://www.ebiz.enea.it/moda-ml/repository/codelist/v2018-1/gc_NT6.xml</a> (XPath YARNQualityRpt/TQheader/thirdParty/id/@numberingOrg) [Optional] (XPath YARNQualityRpt/yarnTecSheet/yarnManufacture/colorCard/colorCardItem/refDoc/docID/@numberingOrg) [Optional]</p> <p>- nota: <i>here can be specified whose document numbering is used (e.g.: Client, Supplier, ..)</i> (XPath YARNQualityRpt/TQheader/refDoc/attachment/fileName/@numberingOrg) [Optional] (a) (XPath YARNQualityRpt/yarnTecSheet/yarnManufacture/colorCard/colorCardItem/refDoc/season/@numberingOrg) [Optional] (a)</p> <p>- nota: <i>this attribute should be used either single or coupled with "listName" and "listVersion"</i> (XPath YARNQualityRpt/TQheader/buyer/additionalIdentifier/@numberingOrg) [Optional] (a)</p> <p>- nota: <i>here the issuer of the identifier must be specified</i> (XPath YARNQualityRpt/yarnTecSheet/yarnIdentity/yarnCode/art/@numberingOrg) [Optional]</p> <p>- nota: <i>this attribute should be used either single or coupled with "listName" and "listVersion"</i> (XPath YARNQualityRpt/TQheader/buyer/id/@numberingOrg) [Optional] (XPath YARNQualityRpt/yarnTecSheet/yarnIdentity/yarnCode/@numberingOrg) [Optional] [Default= CL]</p> <p>(XPath YARNQualityRpt/yarnTecSheet/yarnManufacture/colorCard/colorCardItem/color/@numberingOrg) [Optional]</p> <p>- nota: <i>this attribute should be used either single or coupled with "listName" and "listVersion"</i> (XPath YARNQualityRpt/yarnTecSheet/yarnManufacture/colorCard/colorCardItem/refDoc/attachment/fileName/@numberingOrg) [Optional] (a) (XPath YARNQualityRpt/TQheader/docID/@numberingOrg) [Optional]</p> <p>- nota: <i>here can be specified whose document numbering is used (e.g.: Client, Supplier, ..)</i> (XPath YARNQualityRpt/yarnTecSheet/refDoc/docID/@numberingOrg) [Optional]</p> <p>- nota: <i>here can be specified whose document numbering is used (e.g.: Client, Supplier, ..)</i> (XPath YARNQualityRpt/yarnTecSheet/refDoc/season/@numberingOrg) [Optional] (a)</p> <p>- nota: <i>this attribute should be used either single or coupled with "listName" and "listVersion"</i> (XPath YARNQualityRpt/yarnTecSheet/yarnQuality/note/@numberingOrg) [Optional]</p> <p>- nota: <i>must be used to specify the organization that created the list of codes used in "noteLabel"</i> (XPath YARNQualityRpt/yarnTecSheet/refDoc/attachment/fileName/@numberingOrg) [Optional] (XPath YARNQualityRpt/TQheader/refDoc/season/@numberingOrg) [Optional] (a)</p> <p>- nota: <i>this attribute should be used either single or coupled with "listName" and "listVersion"</i> (XPath YARNQualityRpt/yarnTecSheet/yarnIdentity/season/@numberingOrg) [Optional] (a)</p> <p>- nota: <i>this attribute should be used either single or coupled with "listName" and "listVersion"</i> (XPath YARNQualityRpt/TQheader/refDoc/docID/@numberingOrg) [Optional]</p> <p>- nota: <i>here can be specified whose document numbering is used (e.g.: Client, Supplier, ..)</i> (XPath YARNQualityRpt/yarnTecSheet/yarnManufacture/note/@numberingOrg) [Optional]</p>

	<p>- nota: <i>must be used to specify the organization that created the list of codes used in "noteLabel"</i> (XPath YARNQualityRpt/TQheader/note/@numberingOrg) [Optional]</p> <p>- nota: <i>must be used to specify the organization that created the list of codes used in "noteLabel"</i> (XPath YARNQualityRpt/TQheader/supplier/additionalIdentifier/@numberingOrg) [Optional] (a)</p> <p>- nota: <i>here the issuer of the identifier must be specified</i> (XPath YARNQualityRpt/yarnTecSheet/yarnIdentity/dyeN/@numberingOrg) [Optional] (XPath YARNQualityRpt/yarnTecSheet/yarnIdentity/note/@numberingOrg) [Optional]</p> <p>- nota: <i>must be used to specify the organization that created the list of codes used in "noteLabel"</i> (XPath YARNQualityRpt/TQheader/supplier/id/@numberingOrg) [Optional] (XPath YARNQualityRpt/yarnTecSheet/yarnIdentity/lotN/@numberingOrg) [Optional] (XPath YARNQualityRpt/yarnTecSheet/yarnIdentity/yarnCode/color/@numberingOrg) [Optional]</p> <p>- nota: <i>this attribute should be used either single or coupled with "listName" and "listVersion"</i> (XPath YARNQualityRpt/yarnTecSheet/yarnIdentity/yarnCode/added/@numberingOrg) [Optional]</p> <p>- nota: <i>this attribute should be used either single or coupled with "listName" and "listVersion"</i></p>
optLot	<p>optimized quantity for the manufacturing plant</p> <p>- base type: decimal, min inclusive: 0, (XPath YARNQualityRpt/yarnTecSheet/yarnIdentity/optLot) 0-9</p>
pcTolerance	<p>percent deviation tolerated on the value of a measurement (it must have a plus or minus sign)</p> <p>- base type: decimal, min inclusive: 0, max inclusive: 100, total digits: 2, (XPath YARNQualityRpt/yarnTecSheet/yarnQuality/yarnQTest/pcTolerance) 0-1</p>
percCompos	<p>fiber rate in the product composition</p> <p>- base type: decimal, min inclusive: 0, max inclusive: 100, fraction digits: 2, (XPath YARNQualityRpt/yarnTecSheet/yarnIdentity/yarnCompos/percCompos) 1-9</p>
person	<p>name of the contact person within a Party</p> <p>- base type: string, max length: 40, (XPath YARNQualityRpt/TQheader/thirdParty/person) 0-1 (XPath YARNQualityRpt/TQheader/supplier/person) 0-1 (XPath YARNQualityRpt/TQheader/buyer/person) 0-1</p>
@phone	<p>phone number of the contact person within a Party</p> <p>- base type: string, max length: 35, (XPath YARNQualityRpt/TQheader/supplier/person/@phone) [Optional] (XPath YARNQualityRpt/TQheader/buyer/person/@phone) [Optional] (XPath YARNQualityRpt/TQheader/thirdParty/person/@phone) [Optional]</p>
plyN	<p>number of single threads twisted together</p> <p>- base type: positiveInteger, (XPath YARNQualityRpt/yarnTecSheet/yarnManufacture/yarnPly/plyN) 0-1</p>
plyWork	<p>kind of yarn's ply</p> <p>- base type: string, cod. table: T56 <a href="http://www.ebiz.enea.it/moda-ml/repository/codelist/v2018-1/gc_T56.xml">http://www.ebiz.enea.it/moda-ml/repository/codelist/v2018-1/gc_T56.xml</a> (XPath YARNQualityRpt/yarnTecSheet/yarnManufacture/yarnPly/plyWork) 1-1</p>
postCode	<p>code defining the postal zone</p> <p>- base type: string, max length: 10, (XPath YARNQualityRpt/TQheader/buyer/postCode) 0-1 (XPath YARNQualityRpt/TQheader/supplier/postCode) 0-1</p>

	(XPath YARNQualityRpt/TQheader/thirdParty/postCode) 0-1
price	unit price of the article, object or service specified - base type: decimal, min inclusive: 0, fraction digits: 4, (XPath YARNQualityRpt/yarnTecSheet/yarnIdentity/price) 0-2 (AU)
@priceQualifier	type of price with reference to discount and taxes - base type: string, cod. table: NT20 <a href="http://www.ebiz.enea.it/moda-ml/repository/codelist/v2018-1/gc_NT20.xml">http://www.ebiz.enea.it/moda-ml/repository/codelist/v2018-1/gc_NT20.xml</a> (XPath YARNQualityRpt/yarnTecSheet/yarnIdentity/price/@priceQualifier) [Optional] [Default= NET]
qty	net quantity of the article or object correlated, qualified by the function of the document (ordering, delivering, ..) and by the context - base type: decimal, min inclusive: 0, fraction digits: 2, (XPath YARNQualityRpt/yarnTecSheet/yarnIdentity/yarnTwist/qty) 0-1 - note: <i>here the number of turns per meter is specified</i>
@reelType	type of package used for a yarn product - base type: string, cod. table: T29 <a href="http://www.ebiz.enea.it/moda-ml/repository/codelist/v2018-1/gc_T29.xml">http://www.ebiz.enea.it/moda-ml/repository/codelist/v2018-1/gc_T29.xml</a> (XPath YARNQualityRpt/yarnTecSheet/yarnIdentity/standardPack/@reelType) [Optional] - nota: <i>identifies the kind of unit in the package</i>
@role	Third Party role qualifier - base type: string, cod. table: NT2 <a href="http://www.ebiz.enea.it/moda-ml/repository/codelist/v2018-1/gc_NT2.xml">http://www.ebiz.enea.it/moda-ml/repository/codelist/v2018-1/gc_NT2.xml</a> (XPath YARNQualityRpt/TQheader/thirdParty/@role) [Required]
season	sale season; defined as: season (1 crt) + year (4 crt) - season: S/S=1 A/W=2 Spring=3 Summer=4 Autumn=5 Winter=6: for more than four seasons use alphabetic sequence: 1st season=A 2nd season=B etc.etc. - base type: string, max length: 15, (XPath YARNQualityRpt/yarnTecSheet/yarnIdentity/season) 0-1 (A) (XPath YARNQualityRpt/TQheader/refDoc/season) 0-1 (A) - note: <i>here indicates the season to which the referenced document belongs</i> (XPath YARNQualityRpt/yarnTecSheet/refDoc/season) 0-1 (A) - note: <i>here indicates the season to which the referenced document belongs</i> (XPath YARNQualityRpt/yarnTecSheet/yarnManufacture/colorCard/colorCardItem/refDoc/season) 0-1 (A) - note: <i>here indicates the season to which the referenced document belongs</i>
@sender	qualifier that specifies the Party issuing of the document - base type: boolean, (XPath YARNQualityRpt/TQheader/supplier/@sender) [Optional] (a*) - nota: <i>This attribute is mandatory when the STYLESHEET must be used</i> (XPath YARNQualityRpt/TQheader/thirdParty/@sender) [Optional] (a*) - nota: <i>This attribute is mandatory when the STYLESHEET must be used</i> (XPath YARNQualityRpt/TQheader/buyer/@sender) [Optional] (a*) - nota: <i>This attribute is mandatory when the STYLESHEET must be used</i>
@source	party who has provided the data - base type: string, cod. table: NT12 <a href="http://www.ebiz.enea.it/moda-ml/repository/codelist/v2018-1/gc_NT12.xml">http://www.ebiz.enea.it/moda-ml/repository/codelist/v2018-1/gc_NT12.xml</a> (XPath YARNQualityRpt/yarnTecSheet/yarnQuality/yarnQTest/specValue/@source) [Optional] (XPath YARNQualityRpt/yarnTecSheet/yarnManufacture/yarnColorFastness/specValue/@source) [Optional]
specValue	value requested for a property or a parameter that is measured - base type: decimal, (XPath YARNQualityRpt/yarnTecSheet/yarnQuality/yarnQTest/specValue) 0-1 (XPath YARNQualityRpt/yarnTecSheet/yarnManufacture/yarnColorFastness/specValue) 1-1 - note: <i>when the test forsee two values (change-staining) the 1st value is change and the 2nd staining, divided by ";"</i>

@standardObserver	CIE average chromatic response definition - base type: string, cod. table: T60 <a href="http://www.ebiz.enea.it/moda-ml/repository/codelist/v2018-1/gc_T60.xml">http://www.ebiz.enea.it/moda-ml/repository/codelist/v2018-1/gc_T60.xml</a> (XPath YARNQualityRpt/yarnTecSheet/yarnManufacture/colorCard/colorCardItem/CIELab/@standardObserver) [Optional]
standardPack	number of unit per standard package - base type: positiveInteger, (XPath YARNQualityRpt/yarnTecSheet/yarnIdentity/standardPack) 0-1
street	street and building number identifying a location - base type: string, max length: 80, (XPath YARNQualityRpt/TQheader/thirdParty/street) 0-1 (XPath YARNQualityRpt/TQheader/buyer/street) 0-1 (XPath YARNQualityRpt/TQheader/supplier/street) 0-1
subCountry	short name or code of the sub-country entity - base type: string, max length: 9, (XPath YARNQualityRpt/TQheader/thirdParty/subCountry) 0-1 (XPath YARNQualityRpt/TQheader/buyer/subCountry) 0-1 (XPath YARNQualityRpt/TQheader/supplier/subCountry) 0-1
subDept	name or code of a contact department within a Party - base type: string, max length: 40, (XPath YARNQualityRpt/TQheader/supplier/subDept) 0-1 (N) (XPath YARNQualityRpt/TQheader/thirdParty/subDept) 0-1 (N) (XPath YARNQualityRpt/TQheader/buyer/subDept) 0-1 (N)
tolerance	deviation tolerated on the value of a measurement (it must have a plus or minus sign) - base type: decimal, (XPath YARNQualityRpt/yarnTecSheet/yarnQuality/yarnQTest/tolerance) 0-1
tradeMark	name of the official trademark of a specified product (DEPRECATED, use Brand or Product Line). - base type: string, max length: 50, (XPath YARNQualityRpt/yarnTecSheet/yarnIdentity/tradeMark) 0-1
twistDirection	direction (S or Z) of the yarn twist - base type: string, (XPath YARNQualityRpt/yarnTecSheet/yarnIdentity/yarnTwist/twistDirection) 1-1
@uid	unique element identifier within the xml document - base type: string, (XPath YARNQualityRpt/yarnTecSheet/yarnManufacture/colorCard/colorCardItem/refDoc/attachment/@uid) [Optional] (XPath YARNQualityRpt/TQheader/refDoc/attachment/@uid) [Optional] (XPath YARNQualityRpt/yarnTecSheet/refDoc/attachment/@uid) [Optional]
@um	specification of the unit of measure - base type: string, cod. table: NT7 <a href="http://www.ebiz.enea.it/moda-ml/repository/codelist/v2018-1/gc_NT7.xml">http://www.ebiz.enea.it/moda-ml/repository/codelist/v2018-1/gc_NT7.xml</a> (XPath YARNQualityRpt/yarnTecSheet/yarnIdentity/yarnComWeight/@um) [Required] (XPath YARNQualityRpt/yarnTecSheet/yarnIdentity/minLotExclusive/@um) [Required] (XPath YARNQualityRpt/yarnTecSheet/yarnQuality/yarnQTest/pcTolerance/@um) [Optional] - nota: <i>to be used when it has to be soecified if the declared percentage is b y weight, volume, etc...</i> (XPath YARNQualityRpt/yarnTecSheet/yarnQuality/yarnQTest/tolerance/@um) [Required] (XPath YARNQualityRpt/yarnTecSheet/yarnQuality/yarnQTest/specValue/@um) [Optional] (XPath YARNQualityRpt/yarnTecSheet/yarnIdentity/minLot/@um) [Required] (XPath YARNQualityRpt/yarnTecSheet/yarnIdentity/yarnReelQty/@um) [Required]



	<p>(XPath YARNQualityRpt/yarnTecSheet/yarnIdentity/fibrePD/length/@um) [Required]</p> <p>(XPath YARNQualityRpt/yarnTecSheet/yarnIdentity/price/@um) [Optional]</p> <p>- nota: <i>Unit of measure of the product to which the price is referred (price per meter)</i></p> <p>(XPath YARNQualityRpt/yarnTecSheet/yarnIdentity/fibrePD/diameter/@um) [Optional]</p> <p>(XPath YARNQualityRpt/yarnTecSheet/yarnIdentity/optLot/@um) [Optional]</p> <p>(XPath YARNQualityRpt/yarnTecSheet/yarnManufacture/yarnColorFastness/specValue/@um) [Optional]</p> <p>(XPath YARNQualityRpt/yarnTecSheet/yarnIdentity/yarnTwist/qty/@um) [Required]</p>
uri	<p>Uniform Resource Identifier (URI) that identifies the external object as an Internet resource</p> <p>- base type: normalizedString,</p> <p>(XPath YARNQualityRpt/TQheader/refDoc/attachment/externalReference/uri) 1-1 (N)</p> <p>(XPath YARNQualityRpt/yarnTecSheet/yarnManufacture/colorCard/colorCardItem/refDoc/attachment/externalReference/uri) 1-1 (N)</p> <p>(XPath YARNQualityRpt/yarnTecSheet/refDoc/attachment/externalReference/uri) 1-1 (N)</p>
@useProfile	<p>use profile to which the present document is compliant if it was agreed by the parties. It is suggested a URI with reference to the firms or the URL of the profile.</p> <p>- base type: string,</p> <p>(XPath YARNQualityRpt/@useProfile) [Optional]</p>
@VAT	<p>VAT rate or code (DEPRECATED, use dtScheme element)</p> <p>- base type: string, cod. table: NT16</p> <p><a href="http://www.ebiz.enea.it/moda-ml/repository/codelist/v2018-1/gc_NT16.xml">http://www.ebiz.enea.it/moda-ml/repository/codelist/v2018-1/gc_NT16.xml</a></p> <p>(XPath YARNQualityRpt/TQheader/thirdParty/@VAT) [Optional]</p>
@version	<p>Dictionary version from which the instance has been created</p> <p>- base type: string, cod. table: NT100</p> <p><a href="http://www.ebiz.enea.it/moda-ml/repository/codelist/v2018-1/gc_NT100.xml">http://www.ebiz.enea.it/moda-ml/repository/codelist/v2018-1/gc_NT100.xml</a></p> <p>(XPath YARNQualityRpt/@version) [Optional] [Default= 2018-1]</p>
yarnCFTest	<p>color fastness test for a yarn</p> <p>- base type: string, cod. table: T57</p> <p><a href="http://www.ebiz.enea.it/moda-ml/repository/codelist/v2018-1/gc_T57.xml">http://www.ebiz.enea.it/moda-ml/repository/codelist/v2018-1/gc_T57.xml</a></p> <p>(XPath YARNQualityRpt/yarnTecSheet/yarnManufacture/yarnColorFastness/yarnCFTest) 1-1</p>
yarnClass	<p>yarn classification according to the manufacturing process</p> <p>- base type: string, cod. table: NT31</p> <p><a href="http://www.ebiz.enea.it/moda-ml/repository/codelist/v2018-1/gc_NT31.xml">http://www.ebiz.enea.it/moda-ml/repository/codelist/v2018-1/gc_NT31.xml</a></p> <p>(XPath YARNQualityRpt/yarnTecSheet/yarnIdentity/yarnClass) 0-1</p>
yarnComWeight	<p>dry weight of fibres plus commercial moisture regain</p> <p>- base type: decimal, min inclusive: 0,</p> <p>(XPath YARNQualityRpt/yarnTecSheet/yarnIdentity/yarnComWeight) 0-1</p>
yarnCount	<p>linear density measure of yarn (count)</p> <p>- base type: string,</p> <p>(XPath YARNQualityRpt/yarnTecSheet/yarnIdentity/yarnCount) 0-1</p>
yarnJob	<p>operation of a work cycle for yarn</p> <p>- base type: string, cod. table: T201</p> <p><a href="http://www.ebiz.enea.it/moda-ml/repository/codelist/v2018-1/gc_T201.xml">http://www.ebiz.enea.it/moda-ml/repository/codelist/v2018-1/gc_T201.xml</a></p> <p>(XPath YARNQualityRpt/yarnTecSheet/yarnManufacture/yarnJobSeq/yarnJob) 1-19</p>
yarnKind	<p>general type of yarn</p> <p>- base type: string, cod. table: T54</p> <p><a href="http://www.ebiz.enea.it/moda-ml/repository/codelist/v2018-1/gc_T54.xml">http://www.ebiz.enea.it/moda-ml/repository/codelist/v2018-1/gc_T54.xml</a></p> <p>(XPath YARNQualityRpt/yarnTecSheet/yarnIdentity/yarnKind) 0-1</p>

yarnNameBuyer	name given to the yarn by the Buyer - base type: string, max length: 250, (XPath YARNQualityRpt/yarnTecSheet/yarnIdentity/yarnNameBuyer) 0-1 (U)
yarnNameSupplier	name given to the yarn by the Supplier - base type: string, max length: 250, (XPath YARNQualityRpt/yarnTecSheet/yarnIdentity/yarnNameSupplier) 1-1 (U)
yarnQTestType	Type of test related to a property of a yarn - base type: string, cod. table: T58 <a href="http://www.ebiz.enea.it/moda-ml/repository/codelist/v2018-1/gc_T58.xml">http://www.ebiz.enea.it/moda-ml/repository/codelist/v2018-1/gc_T58.xml</a> (XPath YARNQualityRpt/yarnTecSheet/yarnQuality/yarnQTest/yarnQTestType) 1-1 (N)
yarnReelQty	quantity of yarn (by weight or length) wound upon a bobbin - base type: decimal, min inclusive: 0, fraction digits: 2, (XPath YARNQualityRpt/yarnTecSheet/yarnIdentity/yarnReelQty) 0-1



## 2.3 Suggested best practices

**YARNQualityRpt/TQheader/refDoc/docID (identification number of the referenced document SINCE 2008-1 ITS USE IN THE HEADER IS DISCOURAGED (REPLACED BY msgID))**

numberingOrg indicates the role that produced the document identifier (it is allowed to declare two different ones -e.g. customer and supplier - with two docID with different numberingOrg

**YARNQualityRpt/yarnTecSheet/yarnManufacture/**

**colorCard/colorCardItem/refDoc/docID (identification number of the referenced document SINCE 2008-1 ITS USE IN THE HEADER IS DISCOURAGED (REPLACED BY msgID))**

numberingOrg indicates the role that produced the document identifier (it is allowed to declare two different ones -e.g. customer and supplier - with two docID with different numberingOrg

**YARNQualityRpt/yarnTecSheet/refDoc/docID (identification number of the referenced document SINCE 2008-1 ITS USE IN THE HEADER IS DISCOURAGED (REPLACED BY msgID))**

numberingOrg indicates the role that produced the document identifier (it is allowed to declare two different ones -e.g. customer and supplier - with two docID with different numberingOrg

**YARNQualityRpt/TQheader/refDoc/attachment/**

**externalReference/mimeType (mime type of the external object)**

Use coding from IANA <http://www.iana.org/assignments/media-types/media-types.xml>

**YARNQualityRpt/yarnTecSheet/refDoc/attachment/**

**externalReference/mimeType (mime type of the external object)**

Use coding from IANA <http://www.iana.org/assignments/media-types/media-types.xml>

**YARNQualityRpt/yarnTecSheet/yarnManufacture/**

**colorCard/colorCardItem/refDoc/attachment/externalReference/mimeType (mime type of the external object)**

Use coding from IANA <http://www.iana.org/assignments/media-types/media-types.xml>

## 2.4 Enumeration tables

List of enumeration tables used in the XML document. You can find the corresponding codes at:  
<http://www.ebiz-tcf.eu/moda-ml/imple/moda-ml-2018-1.asp?lingua=en&pag=6>

### Legenda

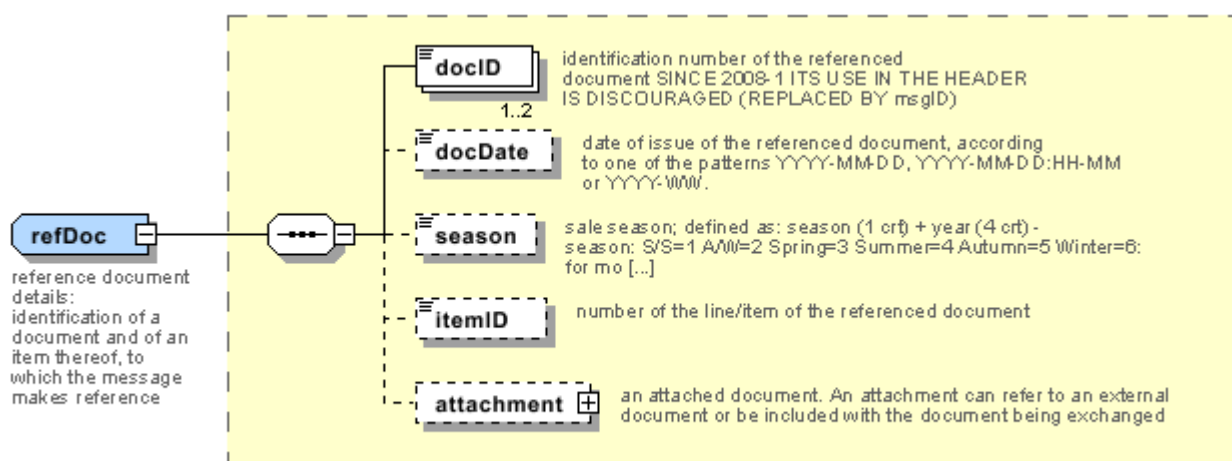
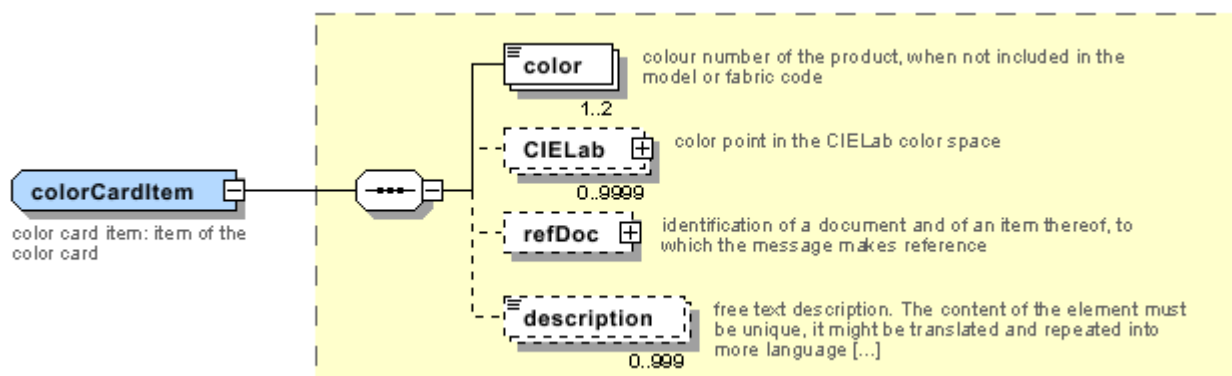
- N: new table
- U: updated properties

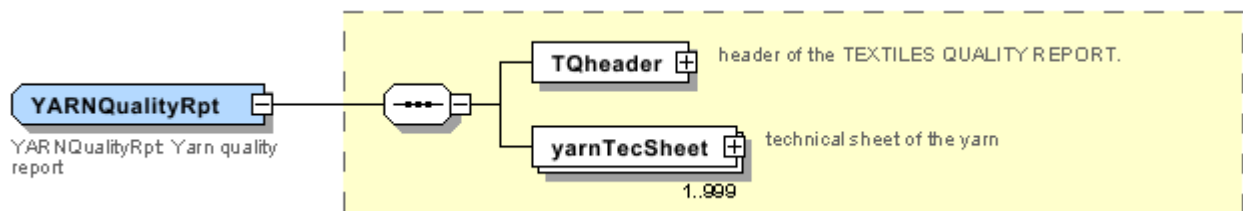
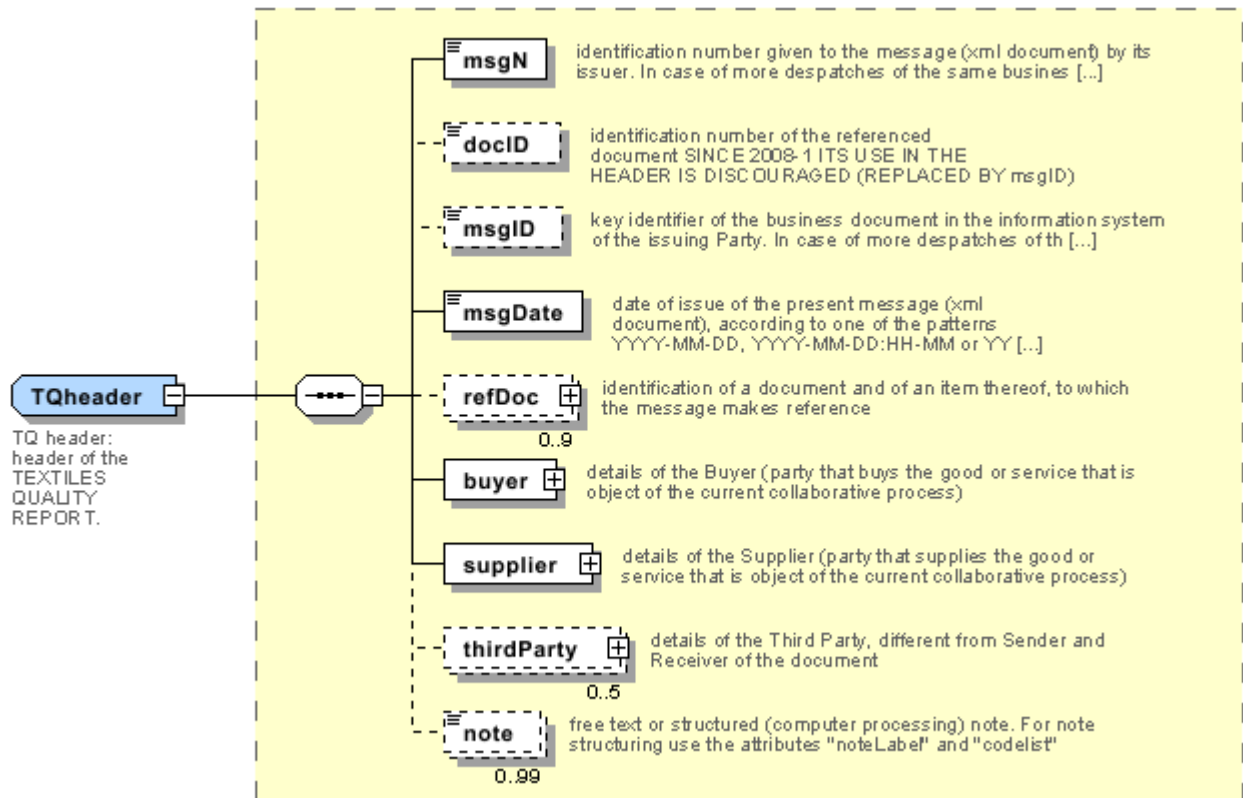
NT100 - eBIZ TCFUpstream version  
NT12 - data source  
NT16 - VAT rate or code  
NT18 - message function  
NT2 - third party qualifier  
NT20 - price qualifier  
NT26 - color type  
NT29 - format of a date  
NT31 - yarn family  
NT6 - coding system owner/issuer  
NT60 - language, codes from ISO 639-1 (subset) (N)  
NT7 - unit of measure (U)  
T10 - ISO3166 - Country  
T15 - dye/print process type  
T16 - dyestuff type  
T19 - fibre type  
T201 - type of job on yarn  
T21 - type of document  
T29 - type of yarn package  
T44 - additional code type  
T54 - kind of yarn  
T55 - count system  
T56 - kind of yarn ply  
T57 - color fastness test for yarn  
T58 - yarn quality parameters  
T59 - CIE illuminant  
T60 - CIE standard observer  
T9 - ISO4217 - Currency



## Annex A

Representative images of the principal complex elements' structure.







## Annex B

### NT100 - eBIZ TCFUpstream version

dictionary version

Agency name: eBIZ

tabella cod.: NT100

File codes list (Generic code): [http://www.ebiz.enea.it/moda-ml/repository/codelist/v2018-1/gc\\_NT100.xml](http://www.ebiz.enea.it/moda-ml/repository/codelist/v2018-1/gc_NT100.xml)

Code	Description	Adoption note	Version status	Date of insertion
2013-1	v2013-1			01/07/2013
2018-1	v2018-1		(N)	04/11/2018
draft	draft		(N)	08/09/2017

### NT12 - data source

party who has provided the data

Agency name: eBIZ

tabella cod.: NT12

File codes list (Generic code): [http://www.ebiz.enea.it/moda-ml/repository/codelist/v2018-1/gc\\_NT12.xml](http://www.ebiz.enea.it/moda-ml/repository/codelist/v2018-1/gc_NT12.xml)

Code	Description	Adoption note	Version status	Date of insertion
AC	internal test			
CO	external test			
CV	test after steaming			

### NT16 - VAT rate or code

VAT rate or code ( DEPRECATED, use dtScheme element )

tabella cod.: NT16

File codes list (Generic code): [http://www.ebiz.enea.it/moda-ml/repository/codelist/v2018-1/gc\\_NT16.xml](http://www.ebiz.enea.it/moda-ml/repository/codelist/v2018-1/gc_NT16.xml)

### NT18 - message function

function performed by the present message with regards to the transmission

Agency name: eBIZ

tabella cod.: NT18

File codes list (Generic code): [http://www.ebiz.enea.it/moda-ml/repository/codelist/v2018-1/gc\\_NT18.xml](http://www.ebiz.enea.it/moda-ml/repository/codelist/v2018-1/gc_NT18.xml)

Code	Description	Adoption note	Version status	Date of insertion
CA	delete this document			01/07/2013
CP	copy			
OR	original			
RC	re-transmission for data correction			
RT	re-transmission			

### NT2 - third party qualifier

Third Party role qualifier

Agency name: eBIZ

tabella cod.: NT2

File codes list (Generic code): [http://www.ebiz.enea.it/moda-ml/repository/codelist/v2018-1/gc\\_NT2.xml](http://www.ebiz.enea.it/moda-ml/repository/codelist/v2018-1/gc_NT2.xml)

Code	Description	Adoption note	Version status	Date of insertion
AG	Sales Agent			
AU	Auditor		(N)	08/04/2019
CE	Certification authority		(N)	08/04/2019
CO	Quality Controller			
DC	Response to			
DF	Invoicee			
DI	Copy to (CC)			28/10/2014
DM	Consignee			
DP	Consignment address (Delivery Party)			
IM	Importer			
OR	Originator			10/09/2014
SC	Sub contractor		(N)	10/04/2019
SM	Service/ePlatform manager		(N)	08/04/2019
SP	Forwarder			
TX	Tax Representative			

### NT20 - price qualifier



type of price with reference to discount and taxes

Agency name: eBIZ

tabella cod.: NT20

File codes list (Generic code): [http://www.ebiz.enea.it/moda-ml/repository/codelist/v2018-1/gc\\_NT20.xml](http://www.ebiz.enea.it/moda-ml/repository/codelist/v2018-1/gc_NT20.xml)

Code	Description	Adoption note	Version status	Date of insertion
GET	gross excluding taxes			
GIT	gross including taxes			
NET	net excluding taxes			
NIT	net including taxes			

### NT26 - color type

type of color to which a "color fastness" value refers

Agency name: eBIZ

tabella cod.: NT26

File codes list (Generic code): [http://www.ebiz.enea.it/moda-ml/repository/codelist/v2018-1/gc\\_NT26.xml](http://www.ebiz.enea.it/moda-ml/repository/codelist/v2018-1/gc_NT26.xml)

Code	Description	Adoption note	Version status	Date of insertion
D	dark			
L	light			
P	pastel			

### NT29 - format of a date

format used for the date

Agency name: eBIZ

tabella cod.: NT29

File codes list (Generic code): [http://www.ebiz.enea.it/moda-ml/repository/codelist/v2018-1/gc\\_NT29.xml](http://www.ebiz.enea.it/moda-ml/repository/codelist/v2018-1/gc_NT29.xml)

Code	Description	Adoption note	Version status	Date of insertion
D	YYYY-MM-DD			
M	YYYY-MM-DD:HH-MM			
W	YYYY-WW			

## NT31 - yarn family

yarn classification according to the manufacturing process

Agency name: eBIZ

tabella cod.: NT31

File codes list (Generic code): [http://www.ebiz.enea.it/moda-ml/repository/codelist/v2018-1/gc\\_NT31.xml](http://www.ebiz.enea.it/moda-ml/repository/codelist/v2018-1/gc_NT31.xml)

Code	Description	Adoption note	Version status	Date of insertion
CAN	carded			
EXT	extrusion			
FSE	dry-spun			
FUM	wet-spun			
OPE	open end			
PAN	combed			
REG	rigenerated			
SMP	half-combed			

## NT6 - coding system owner/issuer

code specifying the organisation who has created or owns the coding or numbering system

Agency name: eBIZ

tabella cod.: NT6

File codes list (Generic code): [http://www.ebiz.enea.it/moda-ml/repository/codelist/v2018-1/gc\\_NT6.xml](http://www.ebiz.enea.it/moda-ml/repository/codelist/v2018-1/gc_NT6.xml)

Code	Description	Adoption note	Version status	Date of insertion
CL	Customer/buyer			
CO	Quality Controller			
EB	eBIZ	replaces 'ML'	(N)	18/03/2019
EN	GS1 ( ex-EAN International )			
ES	e-Stockflow			
FO	Supplier			
GS	GS1			01/07/2013
MF	VAT identifier		(U)	
ML	Moda-ML	DEPRECATED	(U)	
SP	Service Provider			

**NT60 - language, codes from ISO 639-1 (subset) (N)**

Agency name: eBIZ / ISO

tabella cod.: NT60

File codes list (Generic code): [http://www.ebiz.enea.it/moda-ml/repository/codelist/v2018-1/gc\\_NT60.xml](http://www.ebiz.enea.it/moda-ml/repository/codelist/v2018-1/gc_NT60.xml)

<b>Code</b>	<b>Description</b>	<b>Adoption note</b>	<b>Version status</b>	<b>Date of insertion</b>
af	Afrikaans		(N)	31/01/2019
ar	Arabic		(N)	31/01/2019
be	Belarusian		(N)	31/01/2019
bg	Bulgarian		(N)	31/01/2019
bn	Bengali		(N)	31/01/2019
bo	Tibetan		(N)	31/01/2019
bs	Bosnian		(N)	31/01/2019
ca	Catalan, Valencian		(N)	31/01/2019
cs	Czech		(N)	31/01/2019
da	Danish		(N)	31/01/2019
de	German		(N)	31/01/2019
el	Greek, Modern (1453-)		(N)	31/01/2019
en	English		(N)	31/01/2019
eo	Esperanto		(N)	31/01/2019
es	Spanish, Castilian		(N)	31/01/2019
et	Estonian		(N)	31/01/2019
eu	Basque		(N)	31/01/2019
F	Female		(N)	15/04/2019
fa	Persian		(N)	31/01/2019
fi	Finnish		(N)	31/01/2019
fr	French		(N)	31/01/2019
ga	Irish		(N)	31/01/2019
gd	Gaelic, Scottish Gaelic		(N)	31/01/2019
gn	Guarani		(N)	31/01/2019
he	Hebrew		(N)	31/01/2019
hr	Croatian		(N)	31/01/2019
ht	Haitian, Haitian Creole		(N)	31/01/2019
hu	Hungarian		(N)	31/01/2019
hy	Armenian		(N)	31/01/2019

ia	Interlingua (International Auxiliary Language Association)		(N)	31/01/2019
id	Indonesian		(N)	31/01/2019
is	Icelandic		(N)	31/01/2019
it	Italian		(N)	31/01/2019
ja	Japanese		(N)	31/01/2019
jv	Javanese		(N)	31/01/2019
ka	Georgian		(N)	31/01/2019
km	Central Khmer		(N)	31/01/2019
ko	Korean		(N)	31/01/2019
ku	Kurdish		(N)	31/01/2019
lb	Luxembourgish, Letzeburgesch		(N)	31/01/2019
lo	Lao		(N)	31/01/2019
lt	Lithuanian		(N)	31/01/2019
lv	Latvian		(N)	31/01/2019
mg	Malagasy		(N)	31/01/2019
mk	Macedonian		(N)	31/01/2019
mn	Mongolian		(N)	31/01/2019
mt	Maltese		(N)	31/01/2019
nl	Dutch, Flemish		(N)	31/01/2019
no	Norwegian		(N)	31/01/2019
pl	Polish		(N)	31/01/2019
pt	Portuguese		(N)	31/01/2019
ro	Romanian, Moldavian, Moldovan		(N)	31/01/2019
ru	Russian		(N)	31/01/2019
se	Northern Sami		(N)	31/01/2019
sk	Slovak		(N)	31/01/2019
sl	Slovenian		(N)	31/01/2019
sm	Samoan		(N)	31/01/2019
so	Somali		(N)	31/01/2019
sq	Albanian		(N)	31/01/2019
sr	Serbian		(N)	31/01/2019
sv	Swedish		(N)	31/01/2019
sw	Swahili		(N)	31/01/2019
ta	Tamil		(N)	31/01/2019
th	Thai		(N)	31/01/2019

tr	Turkish		(N)	31/01/2019
uk	Ukrainian		(N)	31/01/2019
ur	Urdu		(N)	31/01/2019
uz	Uzbek		(N)	31/01/2019
vi	Vietnamese		(N)	31/01/2019
zh	Chinese		(N)	31/01/2019

#### NT7 - unit of measure (U)

specification of the unit of measure, it is a sub set of table Unit of Measure Code - UN/ECE REC 20 delivered by United Nations Economic Commission for Europe (UN/ECE)

Agency name: eBIZ / UN/ECE

tabella cod.: NT7

File codes list (Generic code): [http://www.ebiz.enea.it/moda-ml/repository/codelist/v2018-1/gc\\_NT7.xml](http://www.ebiz.enea.it/moda-ml/repository/codelist/v2018-1/gc_NT7.xml)

Other link: <http://docs.oasis-open.org/ubl/os-UBL-2.1/cl/gc/default/UnitOfMeasureCode-2.1.gc#>

Code	Description	Adoption note	Version status	Date of insertion
CMK	square centimetre		(N)	20/12/2017
CMQ	cubic centimetre		(N)	20/12/2017
CMT	centimetre			
CNE	centiNewton			
CO2TON	ton of CO2		(N)	10/09/2014
COUPLES	couples			
DMQ	cubic decimetre			
E37	pixel		(N)	11/04/2018
GRM	gram			
HUR	hour			
INH	inch			
KGM	kilogram			
KMT	kilometer			
KWH	kilowatthours		(N)	10/09/2014
LBR	pound			
MIN	minute			
MMK	square millimetre		(N)	20/12/2017
MTK	square metre		(N)	20/12/2017
MTQ	cubic metre			

MTR	metre			
NMB	numero			
ONZ	ounce			
P1	percent			
PPM	parts per milion			
PZ	piece		(U)	
RPM	rounds per metre			
YRD	yard			

### T10 - ISO3166 - Country

code of the nation

Agency name: ISO

tabella cod.: T10

File codes list (Generic code): [http://www.ebiz.enea.it/moda-ml/repository/codelist/v2018-1/gc\\_T10.xml](http://www.ebiz.enea.it/moda-ml/repository/codelist/v2018-1/gc_T10.xml)

Table not printed: there are 239 elements, more than the maximum specified for printing: 99.

### T15 - dye/print process type

dye process applied to the fabric

Agency name: eBIZ

tabella cod.: T15

File codes list (Generic code): [http://www.ebiz.enea.it/moda-ml/repository/codelist/v2018-1/gc\\_T15.xml](http://www.ebiz.enea.it/moda-ml/repository/codelist/v2018-1/gc_T15.xml)

Code	Description	Adoption note	Version status	Date of insertion
CP	cylinder printing			
DP	discharge printing			
FI	fibre dyed - spun dyed			
PC	piece dyed			
PR	printing			
SP	screen printing			
TP	top dyed			01/07/2013
YR	yarn dyed			

### T16 - dyestuff type

dye stuff used in the fabric dye process

Agency name: eBIZ

tabella cod.: T16

File codes list (Generic code): [http://www.ebiz.enea.it/moda-ml/repository/codelist/v2018-1/gc\\_T16.xml](http://www.ebiz.enea.it/moda-ml/repository/codelist/v2018-1/gc_T16.xml)

Code	Description	Adoption note	Version status	Date of insertion
AC	chrome acid dyestuff			
AN	acid dyestuff			
CA	basic dyestuff			
DI	direct dyestuff			
DS	disperse dyestuff			
NP	naphtol dyestuff			
PI	pigment			01/07/2013
PM	premetallized dyestuff			
RE	reactive dyestuff			
SU	sulfur			01/07/2013

### T19 - fibre type

type of fibre used in a textile product

Agency name: eBIZ

tabella cod.: T19

File codes list (Generic code): [http://www.ebiz.enea.it/moda-ml/repository/codelist/v2018-1/gc\\_T19.xml](http://www.ebiz.enea.it/moda-ml/repository/codelist/v2018-1/gc_T19.xml)

Code	Description	Adoption note	Version status	Date of insertion
AB	abaca			20/08/2018
AC	acetate			
AF	other fibres			
AG	alginic fibre			
AL	alfa			20/08/2018
CA	hemp			
CC	coir (coconut)			20/08/2018
CL	chlorofibre			
CO	cotton			
CU	cuprous			

EA	elastan			
EL	Elastodiene			20/08/2018
FL	fluorofibre			
GI	broom			20/08/2018
GL	textile glass			
HA	hair			20/08/2018
HE	henequen			20/08/2018
HL	mixed linen			
HL	cotton linen union			20/08/2018
JU	jute			
KE	kenaf			20/08/2018
KP	kapoc			20/08/2018
LI	linen			
LY	lyocell			20/08/2018
MA	modacrylic			
MD	modal			
ME	metallized			
MG	maguay			20/08/2018
PA	polyamide			
PB	polyureic			
PC	acrylic			
PE	polyethylene			
PI	paper			20/08/2018
PL	polyester			
PM	polyimide			
PP	polypropylene			
PR	proteic			
PU	polyurethane			
RA	mamie			20/08/2018
SE	silk			
SI	sisal			20/08/2018
SN	sun			20/08/2018
TA	triacetate			
TR	textile residues or unspecified composition			20/08/2018
TV	trivinyll			



VI	viscose			
VY	vinylal			
WA	angora			
WB	beaver			20/08/2018
WC	cashgora			
WG	vicuna			
WK	camel			
WL	llama			
WM	mohair			
WN	lapin			20/08/2018
WO	wool			
WP	alpaca			
WS	cashmere			
WT	Oteer			20/08/2018
WU	guanaco			
WV	virgin wool			
WY	yack			

### T201 - type of job on yarn

operation of a work cycle for yarn

Agency name: eBIZ

tabella cod.: T201

File codes list (Generic code): [http://www.ebiz.enea.it/moda-ml/repository/codelist/v2018-1/gc\\_T201.xml](http://www.ebiz.enea.it/moda-ml/repository/codelist/v2018-1/gc_T201.xml)

Code	Description	Adoption note	Version status	Date of insertion
08	to re-comb			
09	to prepare			
10	to card			
11	to spin			
12	to steam			
13	to wind			
14	doubling			
15	to twist			
16	to unwind			
17	to singe			

18	to raise			
19	to reel			
20	to re-wind			
21	to shrink			
22	to coat			
23	to garnett			
24	to print			
25	to dye			
26	to boil			
27	to scour			
28	to dry			
99	other, see note if any			01/07/2013

### T21 - type of document

type or class to which the referenced document belongs

Agency name: eBIZ

tabella cod.: T21

File codes list (Generic code): [http://www.ebiz.enea.it/moda-ml/repository/codelist/v2018-1/gc\\_T21.xml](http://www.ebiz.enea.it/moda-ml/repository/codelist/v2018-1/gc_T21.xml)

Code	Description	Adoption note	Version status	Date of insertion
BOR	blanket order		(N)	01/02/2018
CAT	Price catalogue - tech sheet			
CEO	Certificate of origin		(N)	13/04/2018
CER	Certificate		(N)	13/04/2018
COC	colour card			
CRN	Credit note			08/09/2017
CTO	Checking order			01/07/2013
CTR	Contract		(U)	
CXF	CxF3 file			01/07/2013
DAD	Darn order			
DDT	ddt			
DEA	Despatch advise			
DER	Despatch request			
DR	Document Request			02/12/2014
FOR	Forecast			02/12/2014

GSO	Garment stock offer			
GSX	Garment stock offer change			
INV	Invoice			
KCC	Knitting-Clothing Commission Order			02/12/2014
KCI	Garment in Work Inventory Report			02/12/2014
M2M	Made to Measure Production Order			02/12/2014
MAS	Master marker			
MCI	Visual merchandising instruction		(N)	13/04/2018
OCH	Order change			
OFF	Offer			
ORD	Purchase order			
ORP	Order response			
OSR	order status request			
OSS	Offer status			02/12/2014
OST	Order status			
OUR	our reference			
QR	Quality Report			02/12/2014
RAI	Raw Material in Work Inventory Report			02/12/2014
RDC	Raw dyeing commission order			
RDH	Raw dyeing order change			
RDR	Raw dyeing order response			
REA	Receiving advise			
REQ	Request for Offer			
RET	Return			02/12/2014
RSC	Spinning commission order			
RSH	Spinning order change			
RSR	Spinning order response			
SCL	process sheet			
TFC	Textile dyeing-finishing commission order			
TFX	Textile Dyeing-Finishing Order Change			02/12/2014
TPC	Textile printing commission order			
TPX	Textile Printing Order Change			02/12/2014
TWI	Textile in work inventory			
VMI	visual merchandising instructions		(N)	01/02/2018
WAC	Warping commission order			

WEC	Weaving commission order			
YDC	Yarn dyeing commission order			
YDH	Yarn dyeing order change			
YDR	Yarn dyeing order response			
YTC	Twisting commission order			
YWI	Yarn in work inventory			

### T29 - type of yarn package

type of package (roll-up) used for a yarn product

Agency name: eBIZ

tabella cod.: T29

File codes list (Generic code): [http://www.ebiz.enea.it/moda-ml/repository/codelist/v2018-1/gc\\_T29.xml](http://www.ebiz.enea.it/moda-ml/repository/codelist/v2018-1/gc_T29.xml)

Code	Description	Adoption note	Version status	Date of insertion
CIL	bobbin			
CON	cone			
HNK	hank, skein			01/07/2013
MUF	muff, cake			01/07/2013
SPL	spool			
TUB	tube			
XCO	supercone			

### T44 - additional code type

qualifier of the additional coding of a product

Agency name: eBIZ

tabella cod.: T44

File codes list (Generic code): [http://www.ebiz.enea.it/moda-ml/repository/codelist/v2018-1/gc\\_T44.xml](http://www.ebiz.enea.it/moda-ml/repository/codelist/v2018-1/gc_T44.xml)

Code	Description	Adoption note	Version status	Date of insertion
CC	colour card			
CL	sales collection			
CO	company identification code		(N)	08/09/2017
DY	dye number			
LT	lot number			

MDI	Made in			08/09/2017
MS	manufacturing state			
PKG	packaging			09/09/2014
PL	product line			
RGB	RGB value			
SE	selvedge code			

#### T54 - kind of yarn

general type of yarn

Agency name: eBIZ

tabella cod.: T54

File codes list (Generic code): [http://www.ebiz.enea.it/moda-ml/repository/codelist/v2018-1/gc\\_T54.xml](http://www.ebiz.enea.it/moda-ml/repository/codelist/v2018-1/gc_T54.xml)

Code	Description	Adoption note	Version status	Date of insertion
01	Spun yarn (Staple yarn)			
02	Worsted			
03	Woollen			
04	Carded			01/07/2013
05	Combed			01/07/2013
06	Flax-spun			01/07/2013
07	Rotor spun			01/07/2013
08	Air jet spun			01/07/2013
09	Fancy yarn			01/07/2013
10	Filament yarn - Flat			01/07/2013
11	Zero twist			01/07/2013
12	Twisted			01/07/2013
13	Crêpe			01/07/2013
14	Textured yarn			01/07/2013
15	False Twist – FT (also stretch)			01/07/2013
16	False Twist, Fixed – FTF (also bulked)			01/07/2013
17	Air textured			01/07/2013
18	Elastic yarn (also Elastomeric yarn)			01/07/2013
19	Single covered yarn			01/07/2013
20	Double covered yarn			01/07/2013
21	Air covered yarn			01/07/2013

22	Core-spun			01/07/2013
----	-----------	--	--	------------

### T55 - count system

yarn count system

Agency name: eBIZ

tabella cod.: T55

File codes list (Generic code): [http://www.ebiz.enea.it/moda-ml/repository/codelist/v2018-1/gc\\_T55.xml](http://www.ebiz.enea.it/moda-ml/repository/codelist/v2018-1/gc_T55.xml)

Code	Description	Adoption note	Version status	Date of insertion
DEN	denier			
DTX	decitex			
NEC	english cotton			
NEJ	english jute/hemp/flax			
NEW	english wool			
NM	metric			
TEX	tex			

### T56 - kind of yarn ply

kind of yarn's ply

Agency name: eBIZ

tabella cod.: T56

File codes list (Generic code): [http://www.ebiz.enea.it/moda-ml/repository/codelist/v2018-1/gc\\_T56.xml](http://www.ebiz.enea.it/moda-ml/repository/codelist/v2018-1/gc_T56.xml)

Code	Description	Adoption note	Version status	Date of insertion
CS	single yarn			
FA	fancy yarn			01/07/2013
RC	ply combination yarn			
RS	ply yarn			

### T57 - color fastness test for yarn

color fastness test for a yarn

tabella cod.: T57

File codes list (Generic code): [http://www.ebiz.enea.it/moda-ml/repository/codelist/v2018-1/gc\\_T57.xml](http://www.ebiz.enea.it/moda-ml/repository/codelist/v2018-1/gc_T57.xml)

Code	Description	Adoption note	Version status	Date of insertion
01	to decatizingal (UNI EN ISO 105-E10:98)			01/07/2013
02	to bleaching: peroxide (UNI EN ISO 105-N02:97)			01/07/2013
03	to bleaching: hypochlorite (UNI EN 20105-N01:97)			01/07/2013
04	to spotting: acid (UNI EN ISO 105-E05:99)			01/07/2013
05	to spotting: alkali (UNI EN ISO 105-E06:99)			01/07/2013
06	to mercerizing (UNI EN ISO 105-X04:99)			01/07/2013
07	to soda boiling (UNI EN ISO 105-X06:99)			01/07/2013
08	to degumming (UNI EN ISO 105-X08:99)			01/07/2013
09	to domestic laundering (UNI EN ISO 105-C06:99)			01/07/2013
10	to carbonizing: sulfuric acid (UNI EN ISO 105-X02:98)			01/07/2013
11	to acid chlorination (UNI 5145:88)			01/07/2013
12	to chlorination: Na dichloroisocyanurate (EN ISO 105-X14:99)			01/07/2013
13	to alkaline milling (UNI EN ISO 105-E12:99)			01/07/2013
14	to acid-felting: mild (UNI EN ISO 105-E14:98)			01/07/2013
15	to dry heat (UNI EN ISO 105-P01:97)			01/07/2013

## T58 - yarn quality parameters

parameter related to the quality of yarn

Agency name: eBIZ

tabella cod.: T58

File codes list (Generic code): [http://www.ebiz.enea.it/moda-ml/repository/codelist/v2018-1/gc\\_T58.xml](http://www.ebiz.enea.it/moda-ml/repository/codelist/v2018-1/gc_T58.xml)

Code	Description	Adoption note	Version status	Date of insertion
01	actual count			01/07/2013
02	elongation % at break (UNI-EN-ISO 2062:97)			01/07/2013
03	breaking force (UNI-EN-ISO 2062:97)			01/07/2013
04	tenacity (specific stress) - cN/tex or RKM (UNI-EN-ISO 2062:97)			01/07/2013
05	unevenness - CV USTER			01/07/2013
06	unevenness - thick spots			01/07/2013
07	unevenness - thin spots			01/07/2013
08	unevenness - neps			01/07/2013

09	hairiness			01/07/2013
10	pilling (UNI-EN-ISO 12945-01:2002)			01/07/2013
11	coefficient of friction			01/07/2013
12	delta E CIELab (UNI 8941:87)			01/07/2013

### T59 - CIE illuminant

CIE light source

tabella cod.: T59

File codes list (Generic code): [http://www.ebiz.enea.it/moda-ml/repository/codelist/v2018-1/gc\\_T59.xml](http://www.ebiz.enea.it/moda-ml/repository/codelist/v2018-1/gc_T59.xml)

Code	Description	Adoption note	Version status	Date of insertion
A	home tungsten CCT 2856K°			01/07/2013
C	daylight CCT 6774K°			01/07/2013
D50	daylight CCT 5003Kà			01/07/2013
D65	solar standard CCT 6504K°			01/07/2013
F11	fluorescent narrow band CCT 4000K° (TL84)			01/07/2013
F2	cold white fluorescent CCT 4230K°			01/07/2013
F7	fluorescent broad band CCT 6500K°			01/07/2013

### T60 - CIE standard observer

CIE average chromatic response definition

tabella cod.: T60

File codes list (Generic code): [http://www.ebiz.enea.it/moda-ml/repository/codelist/v2018-1/gc\\_T60.xml](http://www.ebiz.enea.it/moda-ml/repository/codelist/v2018-1/gc_T60.xml)

Code	Description	Adoption note	Version status	Date of insertion
31	CIE-1931			01/07/2013
64	CIE-1964			01/07/2013

### T9 - ISO4217 - Currency

currency code

Agency name: ISO

tabella cod.: T9

File codes list (Generic code): [http://www.ebiz.enea.it/moda-ml/repository/codelist/v2018-1/gc\\_T9.xml](http://www.ebiz.enea.it/moda-ml/repository/codelist/v2018-1/gc_T9.xml)



Table not printed: there are 205 elements, more than the maximum specified for printing: 99.

## Annex C

### New or changed elements towards previous version

Changes or added elements (changes in description excluded; changes in aggregation notes and best practice included): 79

Test Type	Tag	Status	Item type	Changes related to
Attribute	additionalIdentifier	NEW	Additional Party Identifier	Has NEW attribute: numbering organisation code
Attribute	additionalIdentifier	NEW	Additional Party Identifier	Has NEW attribute: id Qualifier
Element()	additionalIdentifier	NEW	Additional Party Identifier	
Element(E)	art	UPDATED	article identifier	Property: Length_Max Old value: 25 New value: 80
Attribute	art	UPDATED	article identifier	Its attribute: code list reference  Property: Aggregation Note_English Old value: <i>this attribute should be ALTERNATIVE to the others</i> New value: <i>at least one out of this attribute and "numberingOrg" should be set</i>
Element()	attachment	NEW	attachment	
Child	attachment	NEW	attachment	Has NEW child of: file name
Child	attachment	NEW	attachment	Has NEW child of: external reference
Child	attachment	NEW	attachment	Has NEW child of: binary object
Attribute	binaryObject	NEW	binary object	Has NEW attribute: encoding
Attribute	binaryObject	NEW	binary object	Has NEW attribute: mime
Attribute	binaryObject	NEW	binary object	Has NEW attribute: format
Attribute	binaryObject	NEW	binary object	Has NEW attribute: character set
Element()	binaryObject	NEW	binary object	

Element(E)	yarnNameBuyer	UPDATED	Buyer yarn name	Property: Length_Max Old value: 70 New value: 250
Child	buyer	NEW	Buyer (*)	Has NEW child of: Party identifier
Child	buyer	NEW	Buyer (*)	Has NEW child of: Additional Party Identifier
Attribute	buyer	NEW	Buyer (*)	Has NEW attribute: sender Party qualifier
Element(I)	characterSetCode	NEW	character set code	
Element(I)	characterSet	NEW	character set	
Child	colorCardItem	UPDATED	color card item	relationship with child: description  Property: Cardmax Old value: 1 New value: 999
Child	colorCardItem	UPDATED	color card item	relationship with child: articles colour identifier  Property: Aggregation Note_English Old value: New value: <i>multiple color values allowed if they differ for at least one of the numberingOrg and listName attributes</i>
Child	colorCardItem	UPDATED	color card item	relationship with child: articles colour identifier  Property: Cardmax Old value: 1 New value: 2
Attribute	description	NEW	description	Has NEW attribute: In
Element(E)	description	UPDATED	description	Property: Length_Max Old value: 70 New value: 250
Element(E)	email	UPDATED	e-mail	Property: Length_Max Old value: 80 New value: 250
Element(I)	encodingCode	NEW	encoding code	
Element(I)	encoding	NEW	encoding	
Attribute	extendedDescription	NEW	extended description	Has NEW attribute: In

Element(l)	extendedDescription	NEW	extended description	
Child	externalReference	NEW	external reference	Has NEW child of: uri
Child	externalReference	NEW	external reference	Has NEW child of: format code
Child	externalReference	NEW	external reference	Has NEW child of: character set code
Child	externalReference	NEW	external reference	Has NEW child of: mime code
Child	externalReference	NEW	external reference	Has NEW child of: encoding code
Element(l)	externalReference	NEW	external reference	
Attribute	fileName	NEW	file name	Has NEW attribute: numbering organisation code
Element(l)	fileName	NEW	file name	
Element(l)	formatCode	NEW	format code	
Element(l)	format	NEW	format	
Attribute	note	UPDATE	general note	Its attribute: numbering organisation code  Property: Aggregation Note_English Old value: New value: <i>must be used to specify the organization that created the list of codes used in "noteLabel"</i>
Element(l)	idQualifier	NEW	id Qualifier	
Element(l)	isURL	NEW	is URL	
Element(E)	legalName	UPDATE	Legal name	Property: Length_Max Old value: 80 New value: 250
Element(E)	itemID	UPDATE	line item number	Property: Length_Max Old value: 6 New value: 40
Element(l)	In	NEW	In	

Elem(l)	mimeCode	NEW	mime code	
Elem(l)	mime	NEW	mime	
Child	refDoc	NEW	reference document details	Has NEW child of: attachment
Child	refDoc	UPDATED	reference document details	relationship with child: document identifier  Property: BestPractice_English Old value: New value: <i>numberingOrg</i> indicates the role that produced the document identifier (it is allowed to declare two different ones -e.g. customer and supplier - with two docID with different numberingOrg)
Attribute	season	NEW	season identifier	Has NEW attribute: code list reference
Attribute	season	NEW	season identifier	Has NEW attribute: numbering organisation code
Attribute	season	NEW	season identifier	Has NEW attribute: code list name
Attribute	season	NEW	season identifier	Has NEW attribute: code list version
Elem(l)	subDept	NEW	department identifier	
Elem(E)	yarnNameSupplier	UPDATED	Supplier yarn name	Property: Length_Max Old value: 70 New value: 250
Child	supplier	NEW	Supplier (*)	Has NEW child of: Party identifier
Child	supplier	NEW	Supplier (*)	Has NEW child of: Additional Party Identifier
Attribute	supplier	NEW	Supplier (*)	Has NEW attribute: sender Party qualifier
Elem(E)	method	UPDATED	test method identifier	Property: Length_Max Old value: 25 New value: 80
Child	thirdParty	NEW	Third Party (*)	Has NEW child of: Party identifier
Attribute	thirdParty	NEW	Third Party (*)	Has NEW attribute: sender Party qualifier
Child	TQheader	NEW	TQ header	Has NEW child of: reference document details
Child	TQheader	UPDATED	TQ header	relationship with child: general note  Property: Cardmax Old value: 19 New value: 99

Attrib	price	NEW	unit price amount	Has NEW attribute: data currency
Elem(E)	price	UPDATED	unit price amount	Property: Digits_Dec Old value: 2 New value: 4
Attrib	uri	NEW	uri	Has NEW attribute: is URL
Elem(I)	uri	NEW	uri	
Child	yarnIdentity	NEW	Yarn identity data	Has NEW child of: extended description
Child	yarnIdentity	NEW	Yarn identity data	Has NEW child of: general note
Child	yarnManufacture	NEW	yarn manufacturing data	Has NEW child of: general note
Child	yarnCode	UPDATED	Yarn product code	relationship with child: description  Property: Aggregation Note_English Old value: New value: <i>Product description</i>
Child	yarnCode	UPDATED	Yarn product code	relationship with child: description  Property: Cardmax Old value: 1 New value: 999
Child	yarnQuality	NEW	yarn quality data	Has NEW child of: general note
Child	yarnQuality	UPDATED	yarn quality data	relationship with child: yarn quality test  Property: Cardmax Old value: 19 New value: 99
Child	yarnQualityTest	UPDATED	yarn quality test	relationship with child: yarn quality test type  Property: Cardmin Old value: 0 New value: 1
Child	yarnTechnicalSheet	NEW	yarn technical sheet	Has NEW child of: reference document details
Elem(I)	yarnQualityTestType	NEW	yarn quality test type	
Child	YARNQualityReport	UPDATED	YARNQualityReport (*)	relationship with child: yarn technical sheet  Property: Cardmax

				Old value: 99 New value: 999
--	--	--	--	---------------------------------

## Annex D

### New or changed tables and codes towards previous version

Changes or added items (changes in CodeListAgencyName excluded; changes in adoption notes and code description included): 97

Test Type	Status	Table code	Table description	Code	Change description
Table	UPD ATED	NT 100	eBIZ TCFUpstream version		Description_English Old value: <i>eBIZ Moda-ML version</i> New value: <i>eBIZ TCFUpstream version</i>
Code	NEW	NT 100		2018-1 (v2018-1)	
Code	NEW	NT 100		<i>draft</i> (draft)	
Table	UPD ATED	NT 16	VAT rate or code		Generalities Old value: <i>VAT rate or code ( deprecated , use dtScheme element )</i> New value: <i>VAT rate or code ( DEPRECATED, use dtScheme element )</i>
Code	NEW	NT 2		<i>AU</i> (Auditor)	
Code	NEW	NT 2		<i>CE</i> (Certification authority)	
Code	NEW	NT 2		<i>SC</i> (Sub contractor)	
Code	NEW	NT 2		<i>SM</i> (Service/ePlatform manager)	
Code	NEW	NT 6		<i>EB</i> (eBIZ)	
Code	UPD ATED	NT 6		<i>ML</i> (DEPRECATED)	adoption_note Old value: New value: <i>DEPRECATED</i>
Table	NEW	NT 60	language, codes from ISO 639-1 (subset)		
Code	NEW	NT 60		<i>F</i> (Female)	
Code	NEW	NT 60		<i>af</i> (Afrikaans)	
Code	NEW	NT 60		<i>ar</i> (Arabic)	
Code	NEW	NT 60		<i>be</i> (Belarusian)	



Co de	NEW	NT 60		<i>bg</i> (Bulgarian)	
Co de	NEW	NT 60		<i>bn</i> (Bengali)	
Co de	NEW	NT 60		<i>bo</i> (Tibetan)	
Co de	NEW	NT 60		<i>bs</i> (Bosnian)	
Co de	NEW	NT 60		<i>ca</i> (Catalan, Valencian)	
Co de	NEW	NT 60		<i>cs</i> (Czech)	
Co de	NEW	NT 60		<i>da</i> (Danish)	
Co de	NEW	NT 60		<i>de</i> (German)	
Co de	NEW	NT 60		<i>el</i> (Greek, Modern (1453-))	
Co de	NEW	NT 60		<i>en</i> (English)	
Co de	NEW	NT 60		<i>eo</i> (Esperanto)	
Co de	NEW	NT 60		<i>es</i> (Spanish, Castilian)	
Co de	NEW	NT 60		<i>et</i> (Estonian)	
Co de	NEW	NT 60		<i>eu</i> (Basque)	
Co de	NEW	NT 60		<i>fa</i> (Persian)	
Co de	NEW	NT 60		<i>fi</i> (Finnish)	
Co de	NEW	NT 60		<i>fr</i> (French)	
Co de	NEW	NT 60		<i>ga</i> (Irish)	
Co de	NEW	NT 60		<i>gd</i> (Gaelic, Scottish Gaelic)	
Co de	NEW	NT 60		<i>gn</i> (Guarani)	
Co de	NEW	NT 60		<i>he</i> (Hebrew)	
Co de	NEW	NT 60		<i>hr</i> (Croatian)	

Co de	NEW	NT 60		<i>ht</i> (Haitian, Haitian Creole)	
Co de	NEW	NT 60		<i>hu</i> (Hungarian)	
Co de	NEW	NT 60		<i>hy</i> (Armenian)	
Co de	NEW	NT 60		<i>ia</i> (Interlingua (International Auxiliary Language Assoc iation))	
Co de	NEW	NT 60		<i>id</i> (Indonesian)	
Co de	NEW	NT 60		<i>is</i> (Icelandic)	
Co de	NEW	NT 60		<i>it</i> (Italian)	
Co de	NEW	NT 60		<i>ja</i> (Japanese)	
Co de	NEW	NT 60		<i>ju</i> (Javanese)	
Co de	NEW	NT 60		<i>ka</i> (Georgian)	
Co de	NEW	NT 60		<i>km</i> (Central Khmer)	
Co de	NEW	NT 60		<i>ko</i> (Korean)	
Co de	NEW	NT 60		<i>ku</i> (Kurdish)	
Co de	NEW	NT 60		<i>lb</i> (Luxembourgish, Letzebu rgesch)	
Co de	NEW	NT 60		<i>lo</i> (Lao)	
Co de	NEW	NT 60		<i>lt</i> (Lithuanian)	
Co de	NEW	NT 60		<i>lv</i> (Latvian)	
Co de	NEW	NT 60		<i>mg</i> (Malagasy)	
Co de	NEW	NT 60		<i>mk</i> (Macedonian)	
Co de	NEW	NT 60		<i>mn</i> (Mongolian)	
Co de	NEW	NT 60		<i>mt</i> (Maltese)	

Co de	NEW	NT 60		<i>nl</i> (Dutch, Flemish)	
Co de	NEW	NT 60		<i>no</i> (Norwegian)	
Co de	NEW	NT 60		<i>pl</i> (Polish)	
Co de	NEW	NT 60		<i>pt</i> (Portuguese)	
Co de	NEW	NT 60		<i>ro</i> (Romanian, Moldavian, M oldovan)	
Co de	NEW	NT 60		<i>ru</i> (Russian)	
Co de	NEW	NT 60		<i>se</i> (Northern Sami)	
Co de	NEW	NT 60		<i>sk</i> (Slovak)	
Co de	NEW	NT 60		<i>sl</i> (Slovenian)	
Co de	NEW	NT 60		<i>sm</i> (Samoan)	
Co de	NEW	NT 60		<i>so</i> (Somali)	
Co de	NEW	NT 60		<i>sq</i> (Albanian)	
Co de	NEW	NT 60		<i>sr</i> (Serbian)	
Co de	NEW	NT 60		<i>sv</i> (Swedish)	
Co de	NEW	NT 60		<i>sw</i> (Swahili)	
Co de	NEW	NT 60		<i>ta</i> (Tamil)	
Co de	NEW	NT 60		<i>th</i> (Thai)	
Co de	NEW	NT 60		<i>tr</i> (Turkish)	
Co de	NEW	NT 60		<i>uk</i> (Ukrainian)	
Co de	NEW	NT 60		<i>ur</i> (Urdu)	
Co de	NEW	NT 60		<i>uz</i> (Uzbek)	
Co de	NEW	NT 60		<i>vi</i> (Vietnamese)	

Code	NEW	NT 60		zh (Chinese)	
Code	NEW	NT 7		CMK (square centimetre)	
Code	NEW	NT 7		CMQ (cubic centimetre)	
Code	NEW	NT 7		E37 (pixel)	
Code	NEW	NT 7		KWH (kilowatthours)	
Code	NEW	NT 7		MMK (square millimetre)	
Code	NEW	NT 7		MTK (square metre)	
Code	NEW	NT 7		CO2TON (ton of CO2)	
Table	UPDATED	NT 7	unit of measure		OtherExternalReferenceURL Old value: New value: # <a href="http://docs.oasis-open.org/ubl/os-UBL-2.1/cl/gc/default/UnitOfMeasureCode-2.1.gc#">http://docs.oasis-open.org/ubl/os-UBL-2.1/cl/gc/default/UnitOfMeasureCode-2.1.gc#</a>
Table	UPDATED	NT 7	unit of measure		Description_English Old value: <i>unity of measure</i> New value: <i>unit of measure</i>
Code	NEW	T2 1		BOR (blanket order)	
Code	NEW	T2 1		CEO (Certificate of origin)	
Code	NEW	T2 1		CER (Certificate)	
Code	UPDATED	T2 1		CTR (Contract)	Text_English Old value: <i>contract</i> New value: <i>Contract</i>
Code	NEW	T2 1		MCI (Visual merchandising instruction)	
Code	NEW	T2 1		VMI (visual merchandising instructions)	
Code	NEW	T4 4		CO (company identification code)	