



<http://www.ebiz-tcf.eu>

IMPLEMENTATION GUIDE

includes COMPARISON BETWEEN CURRENT and LAST
PREVIOUSLY RELEASED VERSION
TRANSACTION "TWISTING REQUEST"

Version: v2018-1

Date of release: 18/7/2019

Document code: G049rv

technical Documentation: <http://www.ebiz.enea.it>

XML Schemas repository: <http://www.ebiz.enea.it/moda-ml/repository/schema/v2018-1/default.asp>

Guides repository: <http://www.ebiz.enea.it/moda-ml/repository/guide/v2018-1/default.asp>

Guide filename: G049rv-eBIZ-TwistingRequest.pdf

1. BUSINESS DESCRIPTION

1.1 Scope

The present guide has been issued to assist the companies of the Textile-Clothing sector in the implementation of the standard XML document "TWISTING REQUEST", providing all the instruction required for its use in the context of e-commerce between Subcontractors and their Customers shown in the enclosed diagram

All the rules required for the construction and validation of the document are embedded into the specific XML-Schema, which is detailed in section "Implementation guide".

1.2 Generalities

The Request is used by a Yarn Producer to request from a Subcontractor an Offer for the twisting of a yarn.

The Request is structured in four levels:

Macro-type of Work Requested = document root (7 types of Request)

Product Family = document qualifier (type of product with reference to the manufacturing process; e.g.: combed yarn, jacquard weaved fabric, ..)

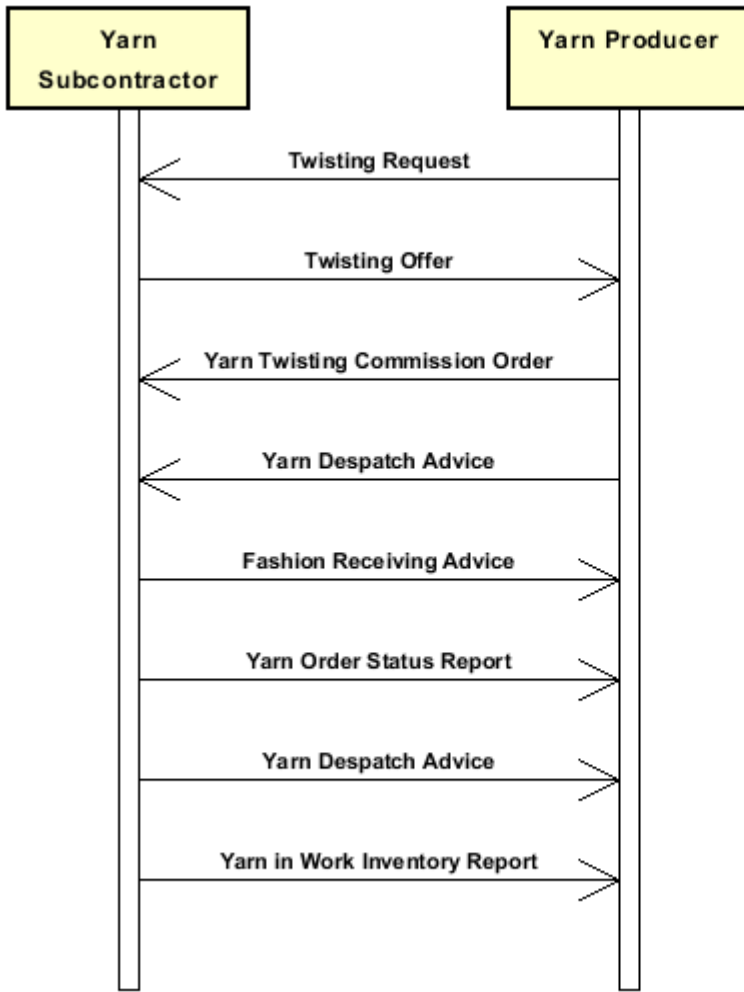
Product Specifications = "xxxSpecs" (technical characteristics and properties of the product)

Operations requested 0 "XXXMnfrOperation" (details of the works requested)

Quantities, unit measures and prices must be referred to the third level (Line Item)

1.3. Possible scenario

Subcontracted yarn twisting



2. IMPLEMENTATION GUIDE

2.1 General structure of XML document

All the business data that can be exchanged through this class of documents are shown in the following "document structure", that provides a simplified vision of the Schema.

In particular:

- the two numbers following each element define its "cardinality" (minimum and maximum number of occurrences); the minimum equal zero indicates that the element is optional, the minimum greater than zero indicates that is mandatory;
- the bold character denotes the complex elements (aggregates of simple elements) that were built for the sake of functionality and re-usability of some complex informations sets. The child elements in each parent element are easily spotted as "indented";
- the symbol "@" denotes an attribute of the preceding element; here "the usage indicator (optional, required, ...)" is shown in square brackets.

Legenda

- N: new element
- U: updated properties
- P: changes in children
- p: is a changed child
- A: changes in attributes
- a: is a new or changed attribute
- *: is a subtype

Structure

YARNTwistRequest

@msgfunction [Optional] [Default= OR]

@yarnProcQualifier [Required]

@version [Optional] [Default= 2018-1]

@useProfile [Optional]

```
| RQheader 1-1 (P)
| | msgN 1-1
| | - choose -
| | msgID 0-1
| | - or -
| | docID 0-1
| | @numberingOrg [Optional]
| | - end choose -
| | msgDate 1-1
| | @dateForm [Optional]
| | season 0-1 (A)
| | @numberingOrg [Optional] (a)
| | @codeList [Optional] (a)
| | @listName [Optional] (a)
| | @listVersion [Optional] (a)
| | validityStart 0-1
| | @dateForm [Optional]
| | validityEnd 1-1
| | @dateForm [Optional]
| | refDoc 0-9 (P)
| | @docType [Required]
| | | docID 1-2 (p)
| | | @numberingOrg [Optional]
| | | docDate 0-1
| | | @dateForm [Optional]
```

- season 0-1 (A)
- @numberingOrg [Optional] (a)
- @codeList [Optional] (a)
- @listName [Optional] (a)
- @listVersion [Optional] (a)
- itemID 0-1 (U)
- attachment 0-1 (N)**
- @uid [Optional]
 - fileName 0-1 (N)
 - @numberingOrg [Optional]
 - binaryObject 0-1 (N)
 - @format [Optional] (N)
 - @mime [Optional] (N)
 - @encoding [Optional] (N)
 - @characterSet [Optional] (N)
- externalReference 0-99 (N)**
- uri 1-1 (N)
 - @isURL [Optional] [Default= true] (Na)
 - mimeCode 0-1 (N)
 - formatCode 0-1 (N)
 - encodingCode 0-1 (N)
 - characterSetCode 0-1 (N)

buyer 1-1 (AP)

- @logo [Optional]
- @sender [Optional] (a*)
- id 1-1 (p)
 - @numberingOrg [Optional]
- additionalIdentifier 0-9 (N)
 - @numberingOrg [Optional] (a)
 - @idQualifier [Optional] (Na)
- legalName 0-1 (U)
- dept 0-1
- subDept 0-1 (N)
- person 0-1
 - @email [Optional]
 - @phone [Optional]
 - @fax [Optional]
- street 0-1
- city 0-1
- subCountry 0-1
- country 0-1
- postCode 0-1

- choose -

supplier 0-1 (AP)

- @logo [Optional]
- @sender [Optional] (a*)
- id 1-1
 - @numberingOrg [Optional]
- additionalIdentifier 0-9 (N)
 - @numberingOrg [Optional] (a)
 - @idQualifier [Optional] (Na)
- legalName 0-1 (U)
- dept 0-1
- subDept 0-1 (N)
- person 0-1
 - @email [Optional]
 - @phone [Optional]
 - @fax [Optional]
- street 0-1
- city 0-1
- subCountry 0-1

```

| | | country 0-1
| | | postCode 0-1
- or -
| | subContractor 0-1 (AP)
| | @sender [Optional] (a*)
| | | id 1-1
| | | @numberingOrg [Optional]
| | | legalName 0-1 (U)
| | | dept 0-1
| | | subDept 0-1 (N)
| | | person 0-1
| | | @email [Optional]
| | | @phone [Optional]
| | | @fax [Optional]
| | | street 0-1
| | | city 0-1
| | | subCountry 0-1
| | | country 0-1
| | | postCode 0-1
- end choose -
| | thirdParty 0-5 (AP)
| | @VAT [Optional]
| | @role [Required]
| | @sender [Optional] (a*)
| | | id 1-1
| | | @numberingOrg [Optional]
| | | legalName 0-1 (U)
| | | dept 0-1
| | | subDept 0-1 (N)
| | | person 0-1
| | | @email [Optional]
| | | @phone [Optional]
| | | @fax [Optional]
| | | street 0-1
| | | city 0-1
| | | subCountry 0-1
| | | country 0-1
| | | postCode 0-1
| | note 0-99
| | @numberingOrg [Optional]
| | @codeList [Optional]
| | @noteLabel [Optional]
| | terms 0-1 (P)
| | | payment 0-5
| | | @finDiscount [Optional]
| | | @finSurcharge [Optional]
| | | - choose -
| | | | payTerm 1-1
| | | | - or -
| | | | payTermText 1-1 (U)
| | | | - end choose -
| | | | payMode 0-1
| | | insPayment 0-5
| | | @part [Required]
| | | - choose -
| | | | payTerm 1-1
| | | | - or -
| | | | payTermText 1-1 (U)
| | | | - end choose -
| | | | payMode 0-1

```

```

| | trade 0-1
| | - choose -
| | | incoTermText 1-1 (U)
| | - or -
| | | incoTerm 1-1
| | - end choose -
| | | location 0-1
| | | @LRI [Optional]
| | transInfo 0-5 (pAP)
| | @transReason [Optional]
| | @progr [Optional] (N)
| | | transMode 1-1
| | | carrier 0-1
| | | deliveryPlace 0-1 (U)
| | | grossWeight 0-1
| | | @um [Required]
| | | netWeight 0-1
| | | @um [Required]
| | | transMeans 0-1
| | | transCondition 0-3
| | | transConditionText 0-1 (U)
| | | despatchPlace 0-1 (N)
| | | despatchDate 0-1 (N)
| | | @dateForm [Optional] (a)
| | | delEffectiveDate 0-1 (p)
| | | @dateForm [Optional]
| | allowanceCharge 0-9 (A)
| | @um [Optional] (a)
| | @VAT [Optional]
| | @minQty [Optional] (a)
| | @currency [Optional] (a)
| | @maxQty [Optional] (N)
| | @isCharge [Optional] (N)
| | - choose -
| | | AC_category 1-1
| | - or -
| | | AC_categoryText 1-1 (U)
| | - end choose -
| | - choose -
| | | AC_percent 1-1
| | - or -
| | | AC_amount 1-1 (A)
| | | @currency [Optional] (a)
| | - end choose -
| | | dtScheme 0-1 (P)
| | | @taxType [Required]
| | | | taxCategory 0-1
| | | | taxRate 0-1
| | | | legalRef 0-1 (A)
| | | | @numberingOrg [Optional]
| | | | @codeList [Optional]
| | | | @listName [Optional]
| | | | @listVersion [Optional]
| | | | note 0-99
| | | | @numberingOrg [Optional]
| | | | @codeList [Optional]
| | | | @noteLabel [Optional]
| | YTRQbody 1-1
| | | YTRQitem 1-unbounded (P)
| | | | lineN 1-1

```

```

| | | @VAT [Optional]
| | | yarnCompos 0-1
| | | | percCompos 1-9
| | | | @fibre [Required]
| | | yarnSpecs 0-99
| | | - choose -
| | | | yarnCharText 1-1 (U)
| | | - or -
| | | | yarnChar 1-1
| | | - end choose -
| | | | experimValue 0-1
| | | | @um [Optional]
| | | | @method [Optional]
| | | | @application [Optional]
| | | | @idCO [Optional]
| | | | specValue 0-1
| | | | @um [Optional]
| | | | @source [Optional]
| | | | @method [Optional]
| | | | @application [Optional]
| | | | @CV [Optional]
| | | - choose -
| | | | tolerance 0-2
| | | | @um [Required]
| | | - or -
| | | | pcTolerance 0-2
| | | | @um [Optional]
| | | - end choose -
| | | qty 1-2
| | | @um [Required]
| | | deliveryDate 1-1
| | | @dateForm [Optional]
| | | notBeforeDate 0-1
| | | @dateForm [Optional]
| | | thirdParty 0-3 (AP)
| | | @VAT [Optional]
| | | @role [Required]
| | | @sender [Optional] (a*)
| | | | id 1-1
| | | | | @numberingOrg [Optional]
| | | | | legalName 0-1 (U)
| | | | | dept 0-1
| | | | | subDept 0-1 (N)
| | | | | person 0-1
| | | | | @email [Optional]
| | | | | @phone [Optional]
| | | | | @fax [Optional]
| | | | | street 0-1
| | | | | city 0-1
| | | | | subCountry 0-1
| | | | | country 0-1
| | | | | postCode 0-1
| | | yarnMnfrOperation 1-9 (P)
| | | - choose -
| | | | jobName 1-1
| | | - or -
| | | | yarnJob 1-1
| | | - end choose -
| | | | yarnJobTech 0-1
| | | | refDoc 0-9 (P)
| | | | @docType [Required]

```



```

| | | | docID 1-2 (p)
| | | | @numberingOrg [Optional]
| | | | docDate 0-1
| | | | @dateForm [Optional]
| | | | season 0-1 (A)
| | | | @numberingOrg [Optional] (a)
| | | | @codeList [Optional] (a)
| | | | @listName [Optional] (a)
| | | | @listVersion [Optional] (a)
| | | | itemID 0-1 (U)
| | | | attachment 0-1 (N)
| | | | @uid [Optional]
| | | | | fileName 0-1 (N)
| | | | | @numberingOrg [Optional] (a)
| | | | | binaryObject 0-1 (N)
| | | | | @format [Optional] (Na)
| | | | | @mime [Optional] (Na)
| | | | | @encoding [Optional] (Na)
| | | | | @characterSet [Optional] (Na)
| | | | | externalReference 0-99 (N)
| | | | | | uri 1-1 (N)
| | | | | | @isURL [Optional] [Default= true] (Na)
| | | | | | mimeTypeCode 0-1 (N)
| | | | | | formatCode 0-1 (N)
| | | | | | encodingCode 0-1 (N)
| | | | | | characterSetCode 0-1 (N)
| | | | yarnMachine 0-1
| | | | yarnMachineSpecs 0-9
| | | | | yarnMachineParam 1-1
| | | | | specValue 0-1
| | | | | @um [Optional]
| | | | | @source [Optional]
| | | | | @method [Optional]
| | | | | @application [Optional]
| | | | | @CV [Optional]
| | | | - choose -
| | | | | tolerance 0-2
| | | | | @um [Required]
| | | | - or -
| | | | | pcTolerance 0-2
| | | | | @um [Optional]
| | | | - end choose -
| | | | | note 0-99
| | | | | @numberingOrg [Optional]
| | | | | @codeList [Optional]
| | | | | @noteLabel [Optional]
| | | | note 0-99
| | | | @numberingOrg [Optional]
| | | | @codeList [Optional]
| | | | @noteLabel [Optional]

```

2.2 Detailed description of document elements

Following tables show all elements (complex and simple) used in this document. Description includes: 1) element's information: xml tag, name, brief description, data type and syntax constraints; 2) information about use of the element in a particular position in the document: xpath and possible associated notes.

2.2.1 Complex elements (Aggregate Business Information Entities)

Complex elements are those elements whose content is composed of other elements (childs). Complex elements are alphabetically ordered.

| | |
|--------------------------|------------------------------------------------------------------------------------------------------------------------------------------------------------------------------------------------------------------------------------------------------------------------------------------------------------------------|
| allowanceCharge | Allowances and Charges related to an Order or a contract (XPath YARNTwistRequest/terms/allowanceCharge) 0-9 (A) |
| attachment | an attached document. An attachment can refer to an external document or be included with the document being exchanged (XPath YARNTwistRequest/RQheader/refDoc/attachment) 0-1 (N) (XPath YARNTwistRequest/YTRQbody/YTRQitem/yarnMnfrOperation/refDoc/attachment) 0-1 (N) |
| buyer | details of the Buyer (party that buys the good or service that is object of the current collaborative process) - base type: Nad, (XPath YARNTwistRequest/RQheader/buyer) 1-1 (AP) |
| dtScheme | set of data usable to declare the duty or tax applied (XPath YARNTwistRequest/terms/allowanceCharge/dtScheme) 0-1 (P) |
| externalReference | details about an external object, such as a document stored at a remote location (XPath YARNTwistRequest/YTRQbody/YTRQitem/yarnMnfrOperation/refDoc/attachment/externalReference) 0-99 (N) (XPath YARNTwistRequest/RQheader/refDoc/attachment/externalReference) 0-99 (N) |
| insPayment | payment details for payment by installments (XPath YARNTwistRequest/terms/insPayment) 0-5 - note: <i>excluded the case of offers, this set of data is alternative to payment set and must be iterated for each payment installment</i> |
| payment | payment details for payment all in one (XPath YARNTwistRequest/terms/payment) 0-5 - note: <i>excluded the case of offers, this set of data is alternative to insPayment, it can be iterated to specify alternative terms of payment (e.g.: 60 days or 30 days with 3% discount)</i> |
| refDoc | identification of a document and of an item thereof, to which the message makes reference (XPath YARNTwistRequest/RQheader/refDoc) 0-9 (P) (XPath YARNTwistRequest/YTRQbody/YTRQitem/yarnMnfrOperation/refDoc) 0-9 (P) - note: <i>here a Process Sheet transmitted to the Subcontractor can be referenced</i> |
| RQheader | header of the document REQUEST FOR OFFER (XPath YARNTwistRequest/RQheader) 1-1 (P) |
| subContractor | details of the Sub-contractor - base type: Nad, (XPath YARNTwistRequest/RQheader/subContractor) 0-1 (AP) |

| | |
|--------------------------|--------------------------------------------------------------------------------------------------------------------------------------------------------------------------------------------------------------------------------------------------------------------------------------------------------------------------------------|
| | - note: <i>At least one out of Supplier and Subcontractor must be indicated.</i> |
| supplier | details of the Supplier (party that supplies the good or service that is object of the current collaborative process) - base type: Nad, (XPath YARNTwistRequest/RQheader/supplier) 0-1 (AP) - note: <i>At least one out of Supplier and Subcontractor must be indicated.</i> |
| terms | details of the commercial obligations for payment and delivery (XPath YARNTwistRequest/terms) 0-1 (P) |
| thirdParty | details of the Third Party, different from Sender and Receiver of the document - base type: Nad, (XPath YARNTwistRequest/YTRQbody/YTRQitem/thirdParty) 0-3 (AP) (XPath YARNTwistRequest/RQheader/thirdParty) 0-5 (AP) - note: <i>In the Offer Request case it might give reference to the Originator of the request.</i> |
| trade | general terms of trade for the specified supply (XPath YARNTwistRequest/terms/trade) 0-1 |
| transInfo | details of transport: mode, carrier and delivery place (XPath YARNTwistRequest/terms/transInfo) 0-5 (pAP) |
| yarnCompos | fibrous composition of a yarn product (XPath YARNTwistRequest/YTRQbody/YTRQitem/yarnCompos) 0-1 |
| yarnMachineSpecs | technical specifications of a machine used in an operation of a work cycle for yarn (type and settings) (XPath YARNTwistRequest/YTRQbody/YTRQitem/yarnMnfrOperation/yarnMachineSpecs) 0-9 |
| yarnMnfrOperation | details of a manufacturing operation used for manufacturing a yarn product (XPath YARNTwistRequest/YTRQbody/YTRQitem/yarnMnfrOperation) 1-9 (P) |
| yarnSpecs | technical properties of a yarn product linked to an operation of the sub-contracted production of yarn or to the purchase of yarn (XPath YARNTwistRequest/YTRQbody/YTRQitem/yarnSpecs) 0-99 |
| YTRQbody | body of the document REQUEST FOR TWISTING (XPath YARNTwistRequest/YTRQbody) 1-1 |
| YTRQitem | line of the document REQUEST FOR TWISTING (XPath YARNTwistRequest/YTRQbody/YTRQitem) 1-unbounded (P) |

2.2.2 Simple elements (Basic Business Information Entities)

Simple elements are those elements whose content is characterized by a data type plus a domain of possible values. Simple elements are alphabetically ordered.

| | |
|-----------------|------------------------------------------------------------------------------------------------------------------------------------------------------------------------------------------------------------------------------------------------------------------------------------------------------------------------|
| AC_amount | amount of an Allowance or Charge - base type: decimal, fraction digits: 2, (XPath YARNTwistRequest/terms/allowanceCharge/AC_amount) 1-1 (A) |
| AC_category | coded specification of an Allowance or Charge - base type: string, cod. table: T41 http://www.ebiz.enea.it/moda-ml/repository/codelist/v2018-1/gc_T41.xml (XPath YARNTwistRequest/terms/allowanceCharge/AC_category) 1-1 |
| AC_categoryText | free text description of an Allowance or Charge - base type: string, max length: 250, (XPath YARNTwistRequest/terms/allowanceCharge/AC_categoryText) 1-1 (U) |

| | |
|----------------------|------------------------------------------------------------------------------------------------------------------------------------------------------------------------------------------------------------------------------------------------------------------------------------------------------------------------------------------------------------------------------------------------------------------------------------------------------------------------------------------------------------------------------------------------------------------------------------------------------------------------|
| AC_percent | amount of an Allowance or Charge as a percentage (always non negative value) - base type: decimal, max inclusive: 100, fraction digits: 2, (XPath YARNTwistRequest/terms/allowanceCharge/AC_percent) 1-1 |
| additionalIdentifier | additional identification code of a Party, for example customs registries or others - base type: string, max length: 15, (XPath YARNTwistRequest/RQheader/supplier/additionalIdentifier) 0-9 (N) - note: identifiers for example for exports, such as MID (Manufacturer Identification Code), EORI (E.O.R.I. - Economic Operator Registration and Identification) (XPath YARNTwistRequest/RQheader/buyer/additionalIdentifier) 0-9 (N) - note: identifiers for example for exports, such as MID (Manufacturer Identification Code), EORI (E.O.R.I. - Economic Operator Registration and Identification) |
| @application | force or similar condition (e.g. no. of revolutions) applied in a test as specified within the standard - base type: string, max length: 15, (XPath YARNTwistRequest/YTRQbody/YTRQitem/yarnSpecs/specValue/@application) [Optional] (XPath YARNTwistRequest/YTRQbody/YTRQitem/yarnMnfrOperation/yarnMachineSpecs/specValue/@application) [Optional] (XPath YARNTwistRequest/YTRQbody/YTRQitem/yarnSpecs/experimValue/@application) [Optional] |
| binaryObject | a binary large object containing an attached document, Coding 'base64Binary' is recommended. - base type: base64Binary, (XPath YARNTwistRequest/YTRQbody/YTRQitem/yarnMnfrOperation/refDoc/attachment/binaryObject) 0-1 (N) (XPath YARNTwistRequest/RQheader/refDoc/attachment/binaryObject) 0-1 (N) |
| carrier | identification of the transport carrier - base type: string, max length: 40, (XPath YARNTwistRequest/terms/transInfo/carrier) 0-1 |
| @characterSet | the character set of the binary object (examples UTF-8, UTF-16, Windows-1252, ISO-8859-7,..) - base type: normalizedString, (XPath YARNTwistRequest/YTRQbody/YTRQitem/yarnMnfrOperation/refDoc/attachment/binaryObject/@characterSet) [Optional] (Na) (XPath YARNTwistRequest/RQheader/refDoc/attachment/binaryObject/@characterSet) [Optional] (N) |
| characterSetCode | the character set of an external document (examples UTF-8, UTF-16, Windows-1252, ISO-8859-7,..) - base type: normalizedString, (XPath YARNTwistRequest/RQheader/refDoc/attachment/externalReference/characterSetCode) 0-1 (N) (XPath YARNTwistRequest/YTRQbody/YTRQitem/yarnMnfrOperation/refDoc/attachment/externalReference/characterSetCode) 0-1 (N) |
| city | name of the city (town, village) - base type: string, max length: 40, (XPath YARNTwistRequest/RQheader/subContractor/city) 0-1 (XPath YARNTwistRequest/RQheader/supplier/city) 0-1 (XPath YARNTwistRequest/RQheader/thirdParty/city) 0-1 (XPath YARNTwistRequest/RQheader/buyer/city) 0-1 (XPath YARNTwistRequest/YTRQbody/YTRQitem/thirdParty/city) 0-1 |

| | |
|------------------|-------------------------------------------------------------------------------------------------------------------------------------------------------------------------------------------------------------------------------------------------------------------------------------------------------------------------------------------------------------------------------------------------------------------------------------------------------------------------------------------------------------------------------------------------------------------------------------------------------------------------------------------------------------------------------------------------------------------------------------------------------------------------------------------------------------------------------------------------------------------------------------------------------------------------------------------------------------------------------------------------------------------------------------------------------------------------------------------------------------------------------------------------------------------------------------------------------------------------------------------------------------------------------------------------------------------------------------------------------------------------------------------------------------------------------------------------------------------------------------------------------------------------------------------------------------------------------------------------------------------------|
| <p>@codeList</p> | <p>it specifies the URL where the list of codes used to make an instance of the element can be found</p> <ul style="list-style-type: none"> - base type: string, max length: 255, (XPath YARNTwistRequest/terms/allowanceCharge/dtScheme/note/@codeList) [Optional] - nota: <i>must be used to provide (URL) the list of codes used in "noteLabel"</i> (XPath YARNTwistRequest/RQheader/refDoc/season/@codeList) [Optional] (a) - nota: <i>this attribute should be used either single or coupled with "listName" and "listVersion"</i> (XPath YARNTwistRequest/YTRQbody/YTRQitem/note/@codeList) [Optional] - nota: <i>must be used to provide (URL) the list of codes used in "noteLabel"</i> (XPath YARNTwistRequest/RQheader/season/@codeList) [Optional] (a) - nota: <i>this attribute should be used either single or coupled with "listName" and "listVersion"</i> (XPath YARNTwistRequest/terms/allowanceCharge/dtScheme/legalRef/@codeList) [Optional] (XPath YARNTwistRequest/RQheader/note/@codeList) [Optional] - nota: <i>must be used to provide (URL) the list of codes used in "noteLabel"</i> (XPath YARNTwistRequest/YTRQbody/YTRQitem/yarnMnfrOperation/refDoc/season/@codeList) [Optional] (a) - nota: <i>this attribute should be used either single or coupled with "listName" and "listVersion"</i> (XPath YARNTwistRequest/YTRQbody/YTRQitem/yarnMnfrOperation/note/@codeList) [Optional] - nota: <i>must be used to provide (URL) the list of codes used in "noteLabel"</i> |
| <p>country</p> | <p>code of the nation</p> <ul style="list-style-type: none"> - base type: string, cod. table: T10 http://www.ebiz.enea.it/moda-ml/repository/codelist/v2018-1/gc_T10.xml (XPath YARNTwistRequest/RQheader/subContractor/country) 0-1 (XPath YARNTwistRequest/YTRQbody/YTRQitem/thirdParty/country) 0-1 (XPath YARNTwistRequest/RQheader/supplier/country) 0-1 (XPath YARNTwistRequest/RQheader/buyer/country) 0-1 (XPath YARNTwistRequest/RQheader/thirdParty/country) 0-1 |
| <p>@currency</p> | <p>currency in which a specified monetary data is expressed</p> <ul style="list-style-type: none"> - base type: string, cod. table: T9 http://www.ebiz.enea.it/moda-ml/repository/codelist/v2018-1/gc_T9.xml (XPath YARNTwistRequest/terms/allowanceCharge/AC_amount/@currency) [Optional] (a) (XPath YARNTwistRequest/terms/allowanceCharge/@currency) [Optional] (a) |
| <p>@CV</p> | <p>coefficient of variation (CV) of a measurement</p> <ul style="list-style-type: none"> - base type: decimal, (XPath YARNTwistRequest/YTRQbody/YTRQitem/yarnMnfrOperation/yarnMachineSpecs/specValue/@CV) [Optional] (XPath YARNTwistRequest/YTRQbody/YTRQitem/yarnSpecs/specValue/@CV) [Optional] |
| <p>@dateForm</p> | <p>format used for the date</p> <ul style="list-style-type: none"> - base type: string, cod. table: NT29 http://www.ebiz.enea.it/moda-ml/repository/codelist/v2018-1/gc_NT29.xml (XPath YARNTwistRequest/YTRQbody/YTRQitem/yarnMnfrOperation/refDoc/docDate/@dateForm) [Optional] (XPath YARNTwistRequest/terms/transInfo/despatchDate/@dateForm) [Optional] (a) (XPath YARNTwistRequest/YTRQbody/YTRQitem/deliveryDate/@dateForm) [Optional] (XPath YARNTwistRequest/RQheader/validityStart/@dateForm) [Optional] (XPath YARNTwistRequest/terms/transInfo/delEffectiveDate/@dateForm) [Optional] (XPath YARNTwistRequest/RQheader/refDoc/docDate/@dateForm) [Optional] (XPath YARNTwistRequest/RQheader/validityEnd/@dateForm) [Optional] |

| | |
|------------------|--------------------------------------------------------------------------------------------------------------------------------------------------------------------------------------------------------------------------------------------------------------------------------------------------------------------------------------------------------------------------------------------------------------------------------------------------------------------------------------------------|
| | (XPath YARNTwistRequest/YTRQbody/YTRQitem/notBeforeDate/@dateForm) [Optional] (XPath YARNTwistRequest/RQheader/msgDate/@dateForm) [Optional] |
| delEffectiveDate | effective date of delivery of goods (declared in Despatch), according to one of the patterns YYYY-MM-DD, YYYY-MM-DD:HH-MM or YYYY-WW. - base type: string, (XPath YARNTwistRequest/terms/transInfo/delEffectiveDate) 0-1 (p) |
| deliveryDate | date of delivery of goods, requested or promised in the purchase process, according to one of the patterns YYYY-MM-DD, YYYY-MM-DD:HH-MM or YYYY-WW. - base type: string, (XPath YARNTwistRequest/YTRQbody/YTRQitem/deliveryDate) 1-1 |
| deliveryPlace | place of delivery of goods, ultimate or related to a given leg - base type: string, max length: 250, (XPath YARNTwistRequest/terms/transInfo/deliveryPlace) 0-1 (U) |
| dept | name or code of a contact department within a Party - base type: string, max length: 40, (XPath YARNTwistRequest/YTRQbody/YTRQitem/thirdParty/dept) 0-1 (XPath YARNTwistRequest/RQheader/thirdParty/dept) 0-1 (XPath YARNTwistRequest/RQheader/subContractor/dept) 0-1 (XPath YARNTwistRequest/RQheader/buyer/dept) 0-1 (XPath YARNTwistRequest/RQheader/supplier/dept) 0-1 |
| despatchDate | date of despatch of goods, requested or promised in the purchase process, according to one of the patterns YYYY-MM-DD, YYYY-MM-DD:HH-MM or YYYY-WW. - base type: string, (XPath YARNTwistRequest/terms/transInfo/despatchDate) 0-1 (N) |
| despatchPlace | place of despatch of goods, origin or related to a given leg - base type: string, max length: 250, (XPath YARNTwistRequest/terms/transInfo/despatchPlace) 0-1 (N) |
| docDate | date of issue of the referenced document, according to one of the patterns YYYY-MM-DD, YYYY-MM-DD:HH-MM or YYYY-WW. - base type: string, (XPath YARNTwistRequest/YTRQbody/YTRQitem/yarnMnfrOperation/refDoc/docDate) 0-1 (XPath YARNTwistRequest/RQheader/refDoc/docDate) 0-1 |
| docID | identification number of the referenced document SINCE 2008-1 ITS USE IN THE HEADER IS DISCOURAGED (REPLACED BY msgID) - base type: string, max length: 80, (XPath YARNTwistRequest/RQheader/docID) 0-1 (XPath YARNTwistRequest/RQheader/refDoc/docID) 1-2 (p) <hr/> AAAA-WARNING! - text not AVAILABLE n. 245 - In=en (XPath YARNTwistRequest/YTRQbody/YTRQitem/yarnMnfrOperation/refDoc/docID) 1-2 (p) <hr/> AAAA-WARNING! - text not AVAILABLE n. 245 - In=en |
| @docType | type or class to which the referenced document belongs - base type: string, cod. table: T21 http://www.ebiz.enea.it/moda-ml/repository/codelist/v2018-1/gc_T21.xml (XPath YARNTwistRequest/RQheader/refDoc/@docType) [Required] (XPath YARNTwistRequest/YTRQbody/YTRQitem/yarnMnfrOperation/refDoc/@docType) [Required] |
| @email | electronic mail address of the contact person within a Party - base type: string, max length: 250, |

| | |
|---------------|-----------------------------------------------------------------------------------------------------------------------------------------------------------------------------------------------------------------------------------------------------------------------------------------------------------------------------------------------------------------------------------------------------------------------------------------------------------------|
| | (XPath YARNTwistRequest/RQheader/supplier/person/@email) [Optional] (XPath YARNTwistRequest/YTRQbody/YTRQitem/thirdParty/person/@email) [Optional] (XPath YARNTwistRequest/RQheader/buyer/person/@email) [Optional] (XPath YARNTwistRequest/RQheader/thirdParty/person/@email) [Optional] (XPath YARNTwistRequest/RQheader/subContractor/person/@email) [Optional] |
| @encoding | specifies the decoding algorithm of the binary object - base type: normalizedString, (XPath YARNTwistRequest/RQheader/refDoc/attachment/binaryObject/@encoding) [Optional] (N) (XPath YARNTwistRequest/YTRQbody/YTRQitem/yarnMnfrOperation/refDoc/attachment/binaryObject/@encoding) [Optional] (Na) |
| encodingCode | the encoding/decoding algorithm used with the external object (example is 'base64Binary') - base type: normalizedString, (XPath YARNTwistRequest/RQheader/refDoc/attachment/externalReference/encodingCode) 0-1 (N) (XPath YARNTwistRequest/YTRQbody/YTRQitem/yarnMnfrOperation/refDoc/attachment/externalReference/encodingCode) 0-1 (N) |
| experimValue | experimental value of the measurement - base type: decimal, (XPath YARNTwistRequest/YTRQbody/YTRQitem/yarnSpecs/experimValue) 0-1 |
| @fax | fax number of the contact person within a Party - base type: string, max length: 35, (XPath YARNTwistRequest/RQheader/thirdParty/person/@fax) [Optional] (XPath YARNTwistRequest/YTRQbody/YTRQitem/thirdParty/person/@fax) [Optional] (XPath YARNTwistRequest/RQheader/buyer/person/@fax) [Optional] (XPath YARNTwistRequest/RQheader/supplier/person/@fax) [Optional] (XPath YARNTwistRequest/RQheader/subContractor/person/@fax) [Optional] |
| @fibre | type of fibre used in a textile product - base type: string, cod. table: T19 http://www.ebiz.enea.it/moda-ml/repository/codelist/v2018-1/gc_T19.xml (XPath YARNTwistRequest/YTRQbody/YTRQitem/yarnCompos/percCompos/@fibre) [Required] |
| fileName | unique identifier (name) of the file - base type: string, max length: 255, (XPath YARNTwistRequest/RQheader/refDoc/attachment/fileName) 0-1 (N) (XPath YARNTwistRequest/YTRQbody/YTRQitem/yarnMnfrOperation/refDoc/attachment/fileName) 0-1 (N) |
| @finDiscount | financial discount rate applied for payment by the date specified - base type: decimal, min inclusive: 0, max inclusive: 100, fraction digits: 2, (XPath YARNTwistRequest/terms/payment/@finDiscount) [Optional] |
| @finSurcharge | financial surcharge rate applied for payment after the date specified - base type: decimal, min inclusive: 0, max inclusive: 100, fraction digits: 2, (XPath YARNTwistRequest/terms/payment/@finSurcharge) [Optional] |
| @format | the format of the binary content (examples xml, pdf, doc,...) - base type: string, (XPath YARNTwistRequest/RQheader/refDoc/attachment/binaryObject/@format) [Optional] (N) (XPath YARNTwistRequest/YTRQbody/YTRQitem/yarnMnfrOperation/refDoc/attachment/binaryObject/@format) [Optional] (Na) |
| formatCode | the format of the external object (examples xml, pdf, doc,...) - base type: normalizedString, |

| | |
|--------------|-----------------------------------------------------------------------------------------------------------------------------------------------------------------------------------------------------------------------------------------------------------------------------------------------------------------------------------------------------------------------------------------------------------------------------------------------------------------------------------------------------------------------------|
| | (XPath YARNTwistRequest/YTRQbody/YTRQitem/yarnMnfrOperation/refDoc/attachment/externalReference/formatCode) 0-1 (N) (XPath YARNTwistRequest/RQheader/refDoc/attachment/externalReference/formatCode) 0-1 (N) |
| grossWeight | the gross weight, declared for transport or customs purpose - base type: decimal, min inclusive: 0, fraction digits: 2, (XPath YARNTwistRequest/terms/transInfo/grossWeight) 0-1 |
| id | primary identification code of a Party; it is recommended the format: nation code (ISO 3166) + VAT identification number (11 crt), with the qualifier "numberingOrg"= MF - base type: string, max length: 15, (XPath YARNTwistRequest/RQheader/thirdParty/id) 1-1 (XPath YARNTwistRequest/RQheader/supplier/id) 1-1 (XPath YARNTwistRequest/RQheader/buyer/id) 1-1 (p) (XPath YARNTwistRequest/YTRQbody/YTRQitem/thirdParty/id) 1-1 (XPath YARNTwistRequest/RQheader/subContractor/id) 1-1 |
| @idCO | primary identification code of the Party executing the test; it is recommended the format: nation code (ISO 3166) + VAT identification number (11 crt). - base type: string, max length: 15, (XPath YARNTwistRequest/YTRQbody/YTRQitem/yarnSpecs/experimValue/@idCO) [Optional] |
| @idQualifier | Qualification of the identifier. - base type: string, (XPath YARNTwistRequest/RQheader/buyer/additionalIdentifier/@idQualifier) [Optional] (Na) - nota: <i>this attribute should be used when the numberingOrg attribute is not enough to declare the type of identifier</i> (XPath YARNTwistRequest/RQheader/supplier/additionalIdentifier/@idQualifier) [Optional] (Na) - nota: <i>this attribute should be used when the numberingOrg attribute is not enough to declare the type of identifier</i> |
| incoTerm | specification of the terms of trade (INCOTERMS) - base type: string, cod. table: T3 http://www.ebiz.enea.it/moda-ml/repository/codelist/v2018-1/gc_T3.xml (XPath YARNTwistRequest/terms/trade/incoTerm) 1-1 |
| incoTermText | free text specifying the terms of trade (incoterm, location) - base type: string, max length: 250, (XPath YARNTwistRequest/terms/trade/incoTermText) 1-1 (U) |
| @isCharge | Indicates if the element to which it refers is a charge (true = charge, false = allowance) - base type: boolean, min length: 0, (XPath YARNTwistRequest/terms/allowanceCharge/@isCharge) [Optional] (N) |
| @isURL | it indicates if the referred element is an URL (true) or not (false) - base type: boolean, (XPath YARNTwistRequest/RQheader/refDoc/attachment/externalReference/uri/@isURL) [Optional] [Default= true] (Na) - nota: <i>usage of URLs is recommended</i> (XPath YARNTwistRequest/YTRQbody/YTRQitem/yarnMnfrOperation/refDoc/attachment/externalReference/uri/@isURL) [Optional] [Default= true] (Na) - nota: <i>usage of URLs is recommended</i> |
| itemID | number of the line/item of the referenced document - base type: string, max length: 40, |

| | |
|--------------|-------------------------------------------------------------------------------------------------------------------------------------------------------------------------------------------------------------------------------------------------------------------------------------------------------------------------------------------------------------------------------------------------------------------------------------------------------------------------------------------------------------------------------------------------------------------------------------------------------------------------------------------------------------------------------------------------------------------------------------------------------------------------------------------------------------------------------------------------------------------------------------------------------------------------------------------------|
| | <p>(XPath YARNTwistRequest/YTRQbody/YTRQitem/yarnMnfrOperation/refDoc/itemID) 0-1 (U) (XPath YARNTwistRequest/RQheader/refDoc/itemID) 0-1 (U)</p> |
| jobName | <p>description of the elementary job - base type: string, max length: 40, (XPath YARNTwistRequest/YTRQbody/YTRQitem/yarnMnfrOperation/jobName) 1-1</p> |
| legalName | <p>legal name of a Party - base type: string, max length: 250, (XPath YARNTwistRequest/RQheader/thirdParty/legalName) 0-1 (U) (XPath YARNTwistRequest/RQheader/subContractor/legalName) 0-1 (U) (XPath YARNTwistRequest/YTRQbody/YTRQitem/thirdParty/legalName) 0-1 (U) (XPath YARNTwistRequest/RQheader/supplier/legalName) 0-1 (U) (XPath YARNTwistRequest/RQheader/buyer/legalName) 0-1 (U)</p> |
| legalRef | <p>legal reference of the duty or tax or fee category - base type: string, (XPath YARNTwistRequest/terms/allowanceCharge/dtScheme/legalRef) 0-1 (A)</p> |
| lineN | <p>number of the line item of the present message (xml document); it is set by the role that produces the document. Usually it is a progressive number, but not always. - base type: positiveInteger, min inclusive: 1, max inclusive: 9999, (XPath YARNTwistRequest/YTRQbody/YTRQitem/lineN) 1-1</p> |
| @listName | <p>the name of the list of codes used to make an instance of the element (it might be thought as descriptive element, i.e. 'fabric printing technologies', or not, i.e. "T264") - base type: string, max length: 40, (XPath YARNTwistRequest/RQheader/refDoc/season/@listName) [Optional] (a) - nota: <i>this attribute should always be used coupled with "numberingOrg"</i> (XPath YARNTwistRequest/YTRQbody/YTRQitem/yarnMnfrOperation/refDoc/season/@listName) [Optional] (a) - nota: <i>this attribute should always be used coupled with "numberingOrg"</i> (XPath YARNTwistRequest/RQheader/season/@listName) [Optional] (a) - nota: <i>this attribute should always be used coupled with "numberingOrg"</i> (XPath YARNTwistRequest/terms/allowanceCharge/dtScheme/legalRef/@listName) [Optional] - nota: <i>this attribute should always be used coupled with "numberingOrg"</i></p> |
| @listVersion | <p>it specifies the version of the list of codes used to make an instance of the element - base type: string, max length: 6, (XPath YARNTwistRequest/terms/allowanceCharge/dtScheme/legalRef/@listVersion) [Optional] - nota: <i>this attribute should always be used coupled with "numberingOrg" and "listName"</i> (XPath YARNTwistRequest/RQheader/refDoc/season/@listVersion) [Optional] (a) - nota: <i>this attribute should always be used coupled with "numberingOrg" and "listName"</i> (XPath YARNTwistRequest/YTRQbody/YTRQitem/yarnMnfrOperation/refDoc/season/@listVersion) [Optional] (a) - nota: <i>this attribute should always be used coupled with "numberingOrg" and "listName"</i> (XPath YARNTwistRequest/RQheader/season/@listVersion) [Optional] (a) - nota: <i>this attribute should always be used coupled with "numberingOrg" and "listName"</i></p> |
| location | <p>specification of a location - base type: string, max length: 40, (XPath YARNTwistRequest/terms/trade/location) 0-1</p> |

| | |
|--------------|-----------------------------------------------------------------------------------------------------------------------------------------------------------------------------------------------------------------------------------------------------------------------------------------------------------------------------------------------------------------------------------------------------------------------------------------------------------------------------------------------------------------------------------------------------------------------|
| | - note: <i>place to which the INCOTERM applies</i> |
| @logo | company logo (URL of the image jpeg or gif). It is recommended that the width of the image does not exceed 640 pixel. - base type: string, max length: 255, (XPath YARNTwistRequest/RQheader/supplier/@logo) [Optional] (XPath YARNTwistRequest/RQheader/buyer/@logo) [Optional] |
| @LRI | attribute usable to format a string according to a customized User rule (local rule) - base type: string, cod. table: NT3 http://www.ebiz.enea.it/moda-ml/repository/codelist/v2018-1/gc_NT3.xml (XPath YARNTwistRequest/terms/trade/location/@LRI) [Optional] |
| @maxQty | maximum product quantity - base type: decimal, min inclusive: 0, fraction digits: 2, (XPath YARNTwistRequest/terms/allowanceCharge/@maxQty) [Optional] (N) - nota: <i>maximum quantity of product for the application of this allowance or charge</i> |
| @method | standard protocol or method employed in a test to evaluate a characteristic or a parameter - base type: string, max length: 80, (XPath YARNTwistRequest/YTRQbody/YTRQitem/yarnSpecs/specValue/@method) [Optional] (XPath YARNTwistRequest/YTRQbody/YTRQitem/yarnMnfrOperation/yarnMachineSpecs/specValue/@method) [Optional] (XPath YARNTwistRequest/YTRQbody/YTRQitem/yarnSpecs/experimValue/@method) [Optional] - nota: <i>we recommend the specification of the method of measure only when different from the one of the MODA-ML coding system</i> |
| @mime | the mime type of the binary object - base type: normalizedString, (XPath YARNTwistRequest/YTRQbody/YTRQitem/yarnMnfrOperation/refDoc/attachment/binaryObject/@mime) [Optional] (Na) (XPath YARNTwistRequest/RQheader/refDoc/attachment/binaryObject/@mime) [Optional] (N) |
| mimeCode | mime type of the external object - base type: normalizedString, (XPath YARNTwistRequest/RQheader/refDoc/attachment/externalReference/mimeCode) 0-1 (N) <hr/> AAAA-WARNING! - text not AVAILABLE n. 245 - In=en (XPath YARNTwistRequest/YTRQbody/YTRQitem/yarnMnfrOperation/refDoc/attachment/externalReference/mimeCode) 0-1 (N) <hr/> AAAA-WARNING! - text not AVAILABLE n. 245 - In=en |
| @minQty | minimum product quantity - base type: decimal, min inclusive: 0, fraction digits: 2, (XPath YARNTwistRequest/terms/allowanceCharge/@minQty) [Optional] (a) - nota: <i>minimum quantity of product for the application of this allowance or charge</i> |
| msgDate | date of issue of the present message (xml document), according to one of the patterns YYYY-MM-DD, YYYY-MM-DD:HH-MM or YYYY-WW. - base type: string, (XPath YARNTwistRequest/RQheader/msgDate) 1-1 |
| @msgfunction | function performed by the present message with regards to the transmission - base type: string, cod. table: NT18 http://www.ebiz.enea.it/moda-ml/repository/codelist/v2018-1/gc_NT18.xml (XPath YARNTwistRequest/@msgfunction) [Optional] [Default= OR] |

| | |
|---------------|-----------------------------------------------------------------------------------------------------------------------------------------------------------------------------------------------------------------------------------------------------------------------------------------------------------------------------------------------------------------------------------------------------------------------------------------------------------------------------------------------------------------------------------------------------------------------------------------------------------------------------------------------------------------------------------------------------------------------------------------------------------------------------------------------------------------------------------------------------------------------------------------------------------------------------------------------------------------------------------------------------------------------------------------------------------------------------------------------------------------------------------------------------------------------------------------------------------------------------------------------------------------------------------|
| msgID | <p>key identifier of the business document in the information system of the issuing Party. In case of more despatches of the same business document, it is unchanged.</p> <p>- base type: string, max length: 35, (XPath YARNTwistRequest/RQheader/msgID) 0-1</p> |
| msgN | <p>identification number given to the message (xml document) by its issuer. In case of more despatches of the same business document, it changes.</p> <p>- base type: string, max length: 35, (XPath YARNTwistRequest/RQheader/msgN) 1-1</p> |
| netWeight | <p>the net weight declared for transport or customs purpose</p> <p>- base type: decimal, min inclusive: 0, fraction digits: 2, (XPath YARNTwistRequest/terms/transInfo/netWeight) 0-1</p> |
| notBeforeDate | <p>earliest date possible to begin an activity, according to one of the patterns YYYY-MM-DD, YYYY-MM-DD:HH-MM or YYYY-WW.</p> <p>- base type: string, (XPath YARNTwistRequest/YTRQbody/YTRQitem/notBeforeDate) 0-1</p> |
| note | <p>free text or structured (computer processing) note. For note structuring use the attributes "noteLabel" and "codelist"</p> <p>- base type: string, max length: 350, (XPath YARNTwistRequest/RQheader/note) 0-99 (XPath YARNTwistRequest/terms/allowanceCharge/dtScheme/note) 0-99 (XPath YARNTwistRequest/YTRQbody/YTRQitem/note) 0-99 (XPath YARNTwistRequest/YTRQbody/YTRQitem/yarnMnfrOperation/note) 0-99</p> |
| @noteLabel | <p>subject qualifier of a note</p> <p>- base type: string, max length: 35, (XPath YARNTwistRequest/terms/allowanceCharge/dtScheme/note/@noteLabel) [Optional]</p> <p>- nota: <i>must be used to qualify the subject of the note</i> (XPath YARNTwistRequest/RQheader/note/@noteLabel) [Optional]</p> <p>- nota: <i>must be used to qualify the subject of the note</i> (XPath YARNTwistRequest/YTRQbody/YTRQitem/yarnMnfrOperation/note/@noteLabel) [Optional]</p> <p>- nota: <i>must be used to qualify the subject of the note</i> (XPath YARNTwistRequest/YTRQbody/YTRQitem/note/@noteLabel) [Optional]</p> <p>- nota: <i>must be used to qualify the subject of the note</i></p> |
| @numberingOrg | <p>code specifying the organisation who has created or owns the coding or numbering system</p> <p>- base type: string, cod. table: NT6 http://www.ebiz.enea.it/moda-ml/repository/codelist/v2018-1/gc_NT6.xml (XPath YARNTwistRequest/RQheader/buyer/additionalIdentifier/@numberingOrg) [Optional] (a)</p> <p>- nota: <i>here the issuer of the identifier must be specified</i> (XPath YARNTwistRequest/RQheader/buyer/id/@numberingOrg) [Optional] (XPath YARNTwistRequest/RQheader/supplier/id/@numberingOrg) [Optional] (XPath YARNTwistRequest/terms/allowanceCharge/dtScheme/note/@numberingOrg) [Optional]</p> <p>- nota: <i>must be used to specify the organization that created the list of codes used in "noteLabel"</i> (XPath YARNTwistRequest/YTRQbody/YTRQitem/yarnMnfrOperation/refDoc/season/@numberingOrg) [Optional] (a)</p> <p>- nota: <i>this attribute should be used either single or coupled with "listName" and "listVersion"</i> (XPath YARNTwistRequest/YTRQbody/YTRQitem/yarnMnfrOperation/refDoc/attachment/fileName/@numberingOrg) [Optional] (a) (XPath YARNTwistRequest/RQheader/refDoc/docID/@numberingOrg) [Optional]</p> |

| | |
|-------------|------------------------------------------------------------------------------------------------------------------------------------------------------------------------------------------------------------------------------------------------------------------------------------------------------------------------------------------------------------------------------------------------------------------------------------------------------------------------------------------------------------------------------------------------------------------------------------------------------------------------------------------------------------------------------------------------------------------------------------------------------------------------------------------------------------------------------------------------------------------------------------------------------------------------------------------------------------------------------------------------------------------------------------------------------------------------------------------------------------------------------------------------------------------------------------------------------------------------------------------------------------------------------------------------------------------------------------------------------------------------------------------------------------------------------------------------------------------------------------------------------------------------------------------------------------------------------------------------------------------------------------------------------------------------------------------------------------------------------------------------------------------------------------------------------------------------------------------------------------------------------------------------------------------------------------------------------------------------------------------------------------------------------------------------------------------------------------------------------------------------------------------------------------------------------------------------------------------------------------------------------------|
| | <p>- nota: <i>here can be specified whose document numbering is used (e.g.: Client, Supplier, ..)</i> (XPath YARNTwistRequest/RQheader/refDoc/season/@numberingOrg) [Optional] (a)</p> <p>- nota: <i>this attribute should be used either single or coupled with "listName" and "listVersion"</i> (XPath YARNTwistRequest/YTRQbody/YTRQitem/note/@numberingOrg) [Optional]</p> <p>- nota: <i>must be used to specify the organization that created the list of codes used in "noteLabel"</i> (XPath YARNTwistRequest/RQheader/refDoc/attachment/fileName/@numberingOrg) [Optional] (XPath YARNTwistRequest/YTRQbody/YTRQitem/thirdParty/id/@numberingOrg) [Optional] (XPath YARNTwistRequest/RQheader/thirdParty/id/@numberingOrg) [Optional] (XPath YARNTwistRequest/RQheader/note/@numberingOrg) [Optional]</p> <p>- nota: <i>must be used to specify the organization that created the list of codes used in "noteLabel"</i> (XPath YARNTwistRequest/YTRQbody/YTRQitem/yarnMnfrOperation/note/@numberingOrg) [Optional]</p> <p>- nota: <i>must be used to specify the organization that created the list of codes used in "noteLabel"</i> (XPath YARNTwistRequest/RQheader/docID/@numberingOrg) [Optional]</p> <p>- nota: <i>here can be specified whose document numbering is used (e.g.: Client, Supplier, ..)</i> (XPath YARNTwistRequest/YTRQbody/YTRQitem/yarnMnfrOperation/refDoc/docID/@numberingOrg) [Optional]</p> <p>- nota: <i>here can be specified whose document numbering is used (e.g.: Client, Supplier, ..)</i> (XPath YARNTwistRequest/RQheader/supplier/additionalIdentifier/@numberingOrg) [Optional] (a)</p> <p>- nota: <i>here the issuer of the identifier must be specified</i> (XPath YARNTwistRequest/RQheader/subContractor/id/@numberingOrg) [Optional] (XPath YARNTwistRequest/RQheader/season/@numberingOrg) [Optional] (a)</p> <p>- nota: <i>this attribute should be used either single or coupled with "listName" and "listVersion"</i> (XPath YARNTwistRequest/terms/allowanceCharge/dtScheme/legalRef/@numberingOrg) [Optional]</p> <p>- nota: <i>this attribute should be used either single or coupled with "listName" and "listVersion"</i></p> |
| @part | <p>percent fraction of a total payment - base type: decimal, min inclusive: 1, max inclusive: 99, fraction digits: 2, (XPath YARNTwistRequest/terms/insPayment/@part) [Required] - nota: <i>here the % value of each installment must be indicated</i></p> |
| payMode | <p>way or means of payment - base type: string, cod. table: T2 http://www.ebiz.enea.it/moda-ml/repository/codelist/v2018-1/gc_T2.xml (XPath YARNTwistRequest/terms/payment/payMode) 0-1 (XPath YARNTwistRequest/terms/insPayment/payMode) 0-1</p> |
| payTerm | <p>code specifying the terms or time by which the payment must be done - base type: string, cod. table: T1 http://www.ebiz.enea.it/moda-ml/repository/codelist/v2018-1/gc_T1.xml (XPath YARNTwistRequest/terms/insPayment/payTerm) 1-1 (XPath YARNTwistRequest/terms/payment/payTerm) 1-1</p> |
| payTermText | <p>free text specifying the terms by which the payment must be done (time/mode or means) - base type: string, max length: 250, (XPath YARNTwistRequest/terms/insPayment/payTermText) 1-1 (U) (XPath YARNTwistRequest/terms/payment/payTermText) 1-1 (U)</p> |

| | |
|-------------|---------------------------------------------------------------------------------------------------------------------------------------------------------------------------------------------------------------------------------------------------------------------------------------------------------------------------------------------------------------------------------------------------------------------------------------------------------------------------------------------------------------------------------------------------------------------------------------------------------------------------------|
| pcTolerance | percent deviation tolerated on the value of a measurement (it must have a plus or minus sign) - base type: decimal, min inclusive: 0, max inclusive: 100, total digits: 2, (XPath YARNTwistRequest/YTRQbody/YTRQitem/yarnSpecs/pcTolerance) 0-2 (XPath YARNTwistRequest/YTRQbody/YTRQitem/yarnMnfrOperation/yarnMachineSpecs/pcTolerance) 0-2 |
| percCompos | fiber rate in the product composition - base type: decimal, min inclusive: 0, max inclusive: 100, fraction digits: 2, (XPath YARNTwistRequest/YTRQbody/YTRQitem/yarnCompos/percCompos) 1-9 |
| person | name of the contact person within a Party - base type: string, max length: 40, (XPath YARNTwistRequest/RQheader/thirdParty/person) 0-1 (XPath YARNTwistRequest/RQheader/supplier/person) 0-1 (XPath YARNTwistRequest/YTRQbody/YTRQitem/thirdParty/person) 0-1 (XPath YARNTwistRequest/RQheader/subContractor/person) 0-1 (XPath YARNTwistRequest/RQheader/buyer/person) 0-1 |
| @phone | phone number of the contact person within a Party - base type: string, max length: 35, (XPath YARNTwistRequest/RQheader/buyer/person/@phone) [Optional] (XPath YARNTwistRequest/RQheader/thirdParty/person/@phone) [Optional] (XPath YARNTwistRequest/RQheader/subContractor/person/@phone) [Optional] (XPath YARNTwistRequest/RQheader/supplier/person/@phone) [Optional] (XPath YARNTwistRequest/YTRQbody/YTRQitem/thirdParty/person/@phone) [Optional] |
| postCode | code defining the postal zone - base type: string, max length: 10, (XPath YARNTwistRequest/RQheader/supplier/postCode) 0-1 (XPath YARNTwistRequest/YTRQbody/YTRQitem/thirdParty/postCode) 0-1 (XPath YARNTwistRequest/RQheader/subContractor/postCode) 0-1 (XPath YARNTwistRequest/RQheader/buyer/postCode) 0-1 (XPath YARNTwistRequest/RQheader/thirdParty/postCode) 0-1 |
| @progr | progressive number in the sequence - base type: positiveInteger, min inclusive: 1, (XPath YARNTwistRequest/terms/transInfo/@progr) [Optional] (N) - nota: <i>Indicates the position of the leg in a sequence of transport legs. If it is declared it must be in all the transInfo elements.</i> |
| qty | net quantity of the article or object correlated, qualified by the function of the document (ordering, delivering, ..) and by the context - base type: decimal, min inclusive: 0, fraction digits: 2, (XPath YARNTwistRequest/YTRQbody/YTRQitem/qty) 1-2 <hr/> AAAA-WARNING! - text not AVAILABLE n. 245 - In=en |
| @role | Third Party role qualifier - base type: string, cod. table: NT2 http://www.ebiz.enea.it/moda-ml/repository/codelist/v2018-1/gc_NT2.xml (XPath YARNTwistRequest/RQheader/thirdParty/@role) [Required] (XPath YARNTwistRequest/YTRQbody/YTRQitem/thirdParty/@role) [Required] |
| season | sale season; defined as: season (1 crt) + year (4 crt) - season: S/S=1 A/W=2 Spring=3 Summer=4 Autumn=5 Winter=6: for more than four seasons use alphabetic sequence: 1st season=A 2nd season=B etc.etc. - base type: string, max length: 15, (XPath YARNTwistRequest/RQheader/refDoc/season) 0-1 (A) - note: <i>here indicates the season to which the referenced document belongs</i> (XPath YARNTwistRequest/RQheader/season) 0-1 (A) (XPath YARNTwistRequest/YTRQbody/YTRQitem/yarnMnfrOperation/refDoc/season) 0-1 (A) - note: <i>here indicates the season to which the referenced document belongs</i> |

| | |
|-------------|-----------------------------------------------------------------------------------------------------------------------------------------------------------------------------------------------------------------------------------------------------------------------------------------------------------------------------------------------------------------------------------------------------------------------------------------------------------------------------------------------------------------------------------------------------------------------------------------------------------------------------------------------------------------------------------------------------------------------------------------------------------------------------------------------------------------------------------------------------------------------------------------------------------------------------------------------------------------------------------------------|
| @sender | <p>qualifier that specifies the Party issuing of the document</p> <ul style="list-style-type: none"> - base type: boolean, (XPath YARNTwistRequest/RQheader/buyer/@sender) [Optional] (a*) - nota: <i>This attribute is mandatory when the STYLESHEET must be used</i> (XPath YARNTwistRequest/RQheader/supplier/@sender) [Optional] (a*) - nota: <i>This attribute is mandatory when the STYLESHEET must be used</i> (XPath YARNTwistRequest/RQheader/subContractor/@sender) [Optional] (a*) - nota: <i>This attribute is mandatory when the STYLESHEET must be used</i> (XPath YARNTwistRequest/YTRQbody/YTRQitem/thirdParty/@sender) [Optional] (a*) - nota: <i>This attribute is mandatory when the STYLESHEET must be used</i> (XPath YARNTwistRequest/RQheader/thirdParty/@sender) [Optional] (a*) - nota: <i>This attribute is mandatory when the STYLESHEET must be used</i> |
| @source | <p>party who has provided the data</p> <ul style="list-style-type: none"> - base type: string, cod. table: NT12 http://www.ebiz.enea.it/moda-ml/repository/codelist/v2018-1/gc_NT12.xml (XPath YARNTwistRequest/YTRQbody/YTRQitem/yarnSpecs/specValue/@source) [Optional] (XPath YARNTwistRequest/YTRQbody/YTRQitem/yarnMnfrOperation/yarnMachineSpecs/specValue/@source) [Optional] |
| specValue | <p>value requested for a property or a parameter that is measured</p> <ul style="list-style-type: none"> - base type: decimal, (XPath YARNTwistRequest/YTRQbody/YTRQitem/yarnMnfrOperation/yarnMachineSpecs/specValue) 0-1 (XPath YARNTwistRequest/YTRQbody/YTRQitem/yarnSpecs/specValue) 0-1 |
| street | <p>street and building number identifying a location</p> <ul style="list-style-type: none"> - base type: string, max length: 80, (XPath YARNTwistRequest/RQheader/supplier/street) 0-1 (XPath YARNTwistRequest/YTRQbody/YTRQitem/thirdParty/street) 0-1 (XPath YARNTwistRequest/RQheader/thirdParty/street) 0-1 (XPath YARNTwistRequest/RQheader/subContractor/street) 0-1 (XPath YARNTwistRequest/RQheader/buyer/street) 0-1 |
| subCountry | <p>short name or code of the sub-country entity</p> <ul style="list-style-type: none"> - base type: string, max length: 9, (XPath YARNTwistRequest/RQheader/supplier/subCountry) 0-1 (XPath YARNTwistRequest/RQheader/buyer/subCountry) 0-1 (XPath YARNTwistRequest/YTRQbody/YTRQitem/thirdParty/subCountry) 0-1 (XPath YARNTwistRequest/RQheader/subContractor/subCountry) 0-1 (XPath YARNTwistRequest/RQheader/thirdParty/subCountry) 0-1 |
| subDept | <p>name or code of a contact department within a Party</p> <ul style="list-style-type: none"> - base type: string, max length: 40, (XPath YARNTwistRequest/RQheader/buyer/subDept) 0-1 (N) (XPath YARNTwistRequest/RQheader/supplier/subDept) 0-1 (N) (XPath YARNTwistRequest/RQheader/thirdParty/subDept) 0-1 (N) (XPath YARNTwistRequest/YTRQbody/YTRQitem/thirdParty/subDept) 0-1 (N) (XPath YARNTwistRequest/RQheader/subContractor/subDept) 0-1 (N) |
| taxCategory | <p>duty or tax or fee category</p> <ul style="list-style-type: none"> - base type: string, cod. table: T62 http://www.ebiz.enea.it/moda-ml/repository/codelist/v2018-1/gc_T62.xml (XPath YARNTwistRequest/terms/allowanceCharge/dtScheme/taxCategory) 0-1 |
| taxRate | <p>duty or tax or fee percent rate</p> <ul style="list-style-type: none"> - base type: string, (XPath YARNTwistRequest/terms/allowanceCharge/dtScheme/taxRate) 0-1 |
| @taxType | <p>duty or tax or fee type</p> <ul style="list-style-type: none"> - base type: string, cod. table: T61 http://www.ebiz.enea.it/moda-ml/repository/codelist/v2018-1/gc_T61.xml |

| | |
|--------------------|----------------------------------------------------------------------------------------------------------------------------------------------------------------------------------------------------------------------------------------------------------------------------------------------------------------------------------------------------------------------------------------------------------------------------------------------------------------------------------------------------------------------------------------------------------------------------------------------------------------------------------------------------------------------------------------------------------------------------------------------------------------------------------------------------------------------------------------------------------------------------------------------------------------------------------------------------------------------------------------------------------------------------------------------------------------------------------------------------------------------------------------------------------------------------------------------------------------------------------------------------------------------------------------|
| | (XPath YARNTwistRequest/terms/allowanceCharge/dtScheme/@taxType) [Required] |
| tolerance | deviation tolerated on the value of a measurement (it must have a plus or minus sign) - base type: decimal, (XPath YARNTwistRequest/YTRQbody/YTRQitem/yarnMnfrOperation/yarnMachineSpecs/tolerance) 0-2 (XPath YARNTwistRequest/YTRQbody/YTRQitem/yarnSpecs/tolerance) 0-2 |
| transCondition | special condition of transport or special service requested to the Forwarder - base type: string, cod. table: T38 http://www.ebiz.enea.it/moda-ml/repository/codelist/v2018-1/gc_T38.xml (XPath YARNTwistRequest/terms/transInfo/transCondition) 0-3 |
| transConditionText | free text description of the special condition of transport or special service requested to the Forwarder - base type: string, max length: 250, (XPath YARNTwistRequest/terms/transInfo/transConditionText) 0-1 (U) |
| transMeans | means of transport, in general or referred to a specific leg - base type: string, cod. table: T40 http://www.ebiz.enea.it/moda-ml/repository/codelist/v2018-1/gc_T40.xml (XPath YARNTwistRequest/terms/transInfo/transMeans) 0-1 |
| transMode | way of transport, in general or referred to the specified leg - base type: string, cod. table: T8 http://www.ebiz.enea.it/moda-ml/repository/codelist/v2018-1/gc_T8.xml (XPath YARNTwistRequest/terms/transInfo/transMode) 1-1 |
| @transReason | reason for the transport - base type: string, cod. table: NT11 http://www.ebiz.enea.it/moda-ml/repository/codelist/v2018-1/gc_NT11.xml (XPath YARNTwistRequest/terms/transInfo/@transReason) [Optional] |
| @uid | unique element identifier within the xml document - base type: string, (XPath YARNTwistRequest/YTRQbody/YTRQitem/yarnMnfrOperation/refDoc/attachment/@uid) [Optional] (XPath YARNTwistRequest/RQheader/refDoc/attachment/@uid) [Optional] |
| @um | specification of the unit of measure - base type: string, cod. table: NT7 http://www.ebiz.enea.it/moda-ml/repository/codelist/v2018-1/gc_NT7.xml (XPath YARNTwistRequest/terms/allowanceCharge/@um) [Optional] (a) (XPath YARNTwistRequest/YTRQbody/YTRQitem/yarnSpecs/experimValue/@um) [Optional] (XPath YARNTwistRequest/YTRQbody/YTRQitem/yarnMnfrOperation/yarnMachineSpecs/specValue/@um) [Optional] (XPath YARNTwistRequest/YTRQbody/YTRQitem/yarnMnfrOperation/yarnMachineSpecs/pcTolerance/@um) [Optional] - nota: <i>to be used when it has to be soecified if the declared percentage is by weight, volume, etc...</i> (XPath YARNTwistRequest/terms/transInfo/grossWeight/@um) [Required] (XPath YARNTwistRequest/YTRQbody/YTRQitem/yarnMnfrOperation/yarnMachineSpecs/tolerance/@um) [Required] (XPath YARNTwistRequest/terms/transInfo/netWeight/@um) [Required] (XPath YARNTwistRequest/YTRQbody/YTRQitem/yarnSpecs/tolerance/@um) [Required] (XPath YARNTwistRequest/YTRQbody/YTRQitem/yarnSpecs/pcTolerance/@um) [Optional] - nota: <i>to be used when it has to be soecified if the declared percentage is by weight, volume, etc...</i> |

| | |
|---------------|------------------------------------------------------------------------------------------------------------------------------------------------------------------------------------------------------------------------------------------------------------------------------------------------------------------------------------------------------------------------------------------------------------------------------------------------------------------------------------------------------------------------------------------------------------------------------------------------------------|
| | (XPath YARNTwistRequest/YTRQbody/YTRQitem/qty/@um) [Required] (XPath YARNTwistRequest/YTRQbody/YTRQitem/yarnSpecs/specValue/@um) [Optional] |
| uri | Uniform Resource Identifier (URI) that identifies the external object as an Internet resource - base type: normalizedString, (XPath YARNTwistRequest/RQheader/refDoc/attachment/externalReference/uri) 1-1 (N) (XPath YARNTwistRequest/YTRQbody/YTRQitem/yarnMnfrOperation/refDoc/attachment/externalReference/uri) 1-1 (N) |
| @useProfile | use profile to which the present document is compliant if it was agreed by the parties. It is suggested a URI with reference to the firms or the URL of the profile. - base type: string, (XPath YARNTwistRequest/@useProfile) [Optional] |
| validityEnd | date by which the validity ends, according to one of the patterns YYYY-MM-DD, YYYY-MM-DD:HH-MM or YYYY-WW. - base type: string, (XPath YARNTwistRequest/RQheader/validityEnd) 1-1 |
| validityStart | date by which the validity starts, according to one of the patterns YYYY-MM-DD, YYYY-MM-DD:HH-MM or YYYY-WW. - base type: string, (XPath YARNTwistRequest/RQheader/validityStart) 0-1 |
| @VAT | VAT rate or code (DEPRECATED, use dtScheme element) - base type: string, cod. table: NT16 http://www.ebiz.enea.it/moda-ml/repository/codelist/v2018-1/gc_NT16.xml (XPath YARNTwistRequest/RQheader/thirdParty/@VAT) [Optional] (XPath YARNTwistRequest/YTRQbody/YTRQitem/thirdParty/@VAT) [Optional] (XPath YARNTwistRequest/YTRQbody/YTRQitem/lineN/@VAT) [Optional] - nota: <i>Deprecated, prefer dtScheme when available.</i> (XPath YARNTwistRequest/terms/allowanceCharge/@VAT) [Optional] |
| @version | Dictionary version from which the instance has been created - base type: string, cod. table: NT100 http://www.ebiz.enea.it/moda-ml/repository/codelist/v2018-1/gc_NT100.xml (XPath YARNTwistRequest/@version) [Optional] [Default= 2018-1] |
| yarnChar | physical or mechanical parameter used to define a property of a yarn - base type: string, cod. table: T24 http://www.ebiz.enea.it/moda-ml/repository/codelist/v2018-1/gc_T24.xml (XPath YARNTwistRequest/YTRQbody/YTRQitem/yarnSpecs/yarnChar) 1-1 |
| yarnCharText | free text describing the physical or mechanical parameter used to define a property of a yarn - base type: string, max length: 250, (XPath YARNTwistRequest/YTRQbody/YTRQitem/yarnSpecs/yarnCharText) 1-1 (U) |
| yarnJob | operation of a work cycle for yarn - base type: string, cod. table: T201 http://www.ebiz.enea.it/moda-ml/repository/codelist/v2018-1/gc_T201.xml (XPath YARNTwistRequest/YTRQbody/YTRQitem/yarnMnfrOperation/yarnJob) 1-1 |
| yarnJobTech | operation technology for yarn - base type: string, cod. table: T261 http://www.ebiz.enea.it/moda-ml/repository/codelist/v2018-1/gc_T261.xml (XPath YARNTwistRequest/YTRQbody/YTRQitem/yarnMnfrOperation/yarnJobTech) 0-1 |

| | |
|--------------------|----------------------------------------------------------------------------------------------------------------------------------------------------------------------------------------------------------------------------------------------------------------------------------------------------------------------------------------------------------------------------------------------------------------------------------|
| yarnMachine | <p>machine used in an operation of a work cycle for yarn</p> <p>- base type: string, cod. table: T271</p> <p>http://www.ebiz.enea.it/moda-ml/repository/codelist/v2018-1/gc_T271.xml</p> <p>(XPath YARNTwistRequest/YTRQbody/YTRQitem/yarnMnfrOperation/yarnMachine)</p> <p>0-1</p> |
| yarnMachineParam | <p>setting parameter of a machine used in an operation of a work cycle for yarn</p> <p>- base type: string, cod. table: T281</p> <p>http://www.ebiz.enea.it/moda-ml/repository/codelist/v2018-1/gc_T281.xml</p> <p>(XPath YARNTwistRequest/YTRQbody/YTRQitem/yarnMnfrOperation/yarnMachine Specs/yarnMachineParam) 1-1</p> |
| @yarnProcQualifier | <p>type of yarn with reference to the manufacturing process</p> <p>- base type: string, cod. table: NT31</p> <p>http://www.ebiz.enea.it/moda-ml/repository/codelist/v2018-1/gc_NT31.xml</p> <p>(XPath YARNTwistRequest/@yarnProcQualifier) [Required]</p> |

2.3 Suggested best practices

YARNTwistRequest/RQheader/refDoc/docID (identification number of the referenced document SINCE 2008-1 ITS USE IN THE HEADER IS DISCOURAGED (REPLACED BY msgID))

numberingOrg indicates the role that produced the document identifier (it is allowed to declare two different ones -e.g. customer and supplier - with two docID with different numberingOrg

YARNTwistRequest/YTRQbody/YTRQitem/yarnMnfrOperation/refDoc/docID (identification number of the referenced document SINCE 2008-1 ITS USE IN THE HEADER IS DISCOURAGED (REPLACED BY msgID))

numberingOrg indicates the role that produced the document identifier (it is allowed to declare two different ones -e.g. customer and supplier - with two docID with different numberingOrg

**YARNTwistRequest/RQheader/refDoc/attachment/
externalReference/mimeCode (mime type of the external object)**

Use coding from IANA <http://www.iana.org/assignments/media-types/media-types.xml>

YARNTwistRequest/YTRQbody/YTRQitem/yarnMnfrOperation/refDoc/attachment/externalReference/mimeCode (mime type of the external object)

Use coding from IANA <http://www.iana.org/assignments/media-types/media-types.xml>

YARNTwistRequest/YTRQbody/YTRQitem/qty (net quantity of the article or object correlated, qualified by the function of the document (ordering, delivering, ..) and by the context)

this element can have two instances only if the units of measure are different

2.4 Enumeration tables

List of enumeration tables used in the XML document. You can find the corresponding codes at:
<http://www.ebiz-tcf.eu/moda-ml/imple/moda-ml-2018-1.asp?lingua=en&pag=6>

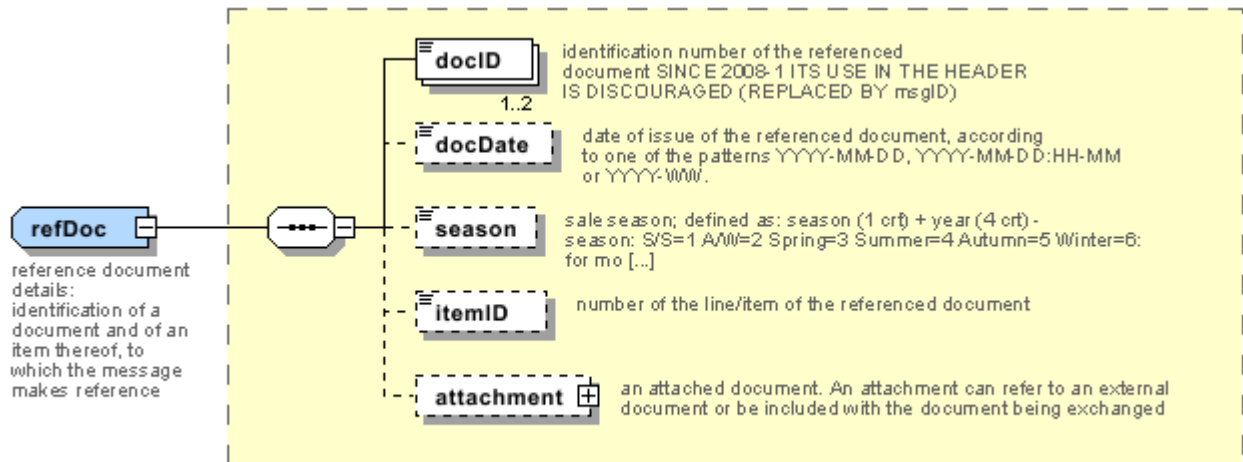
Legenda

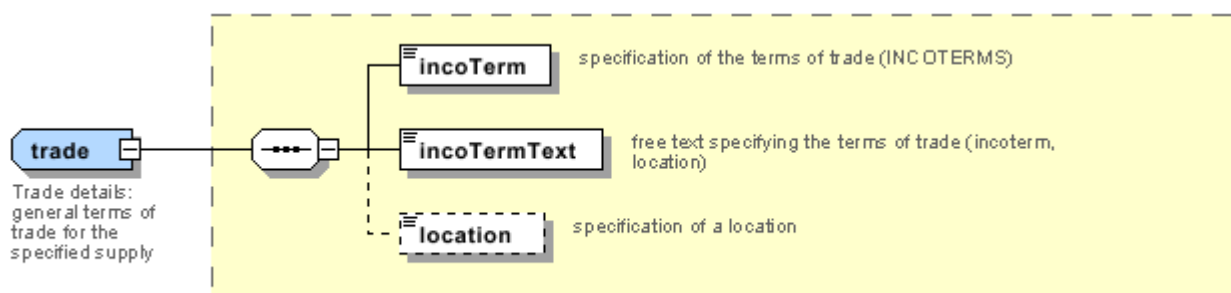
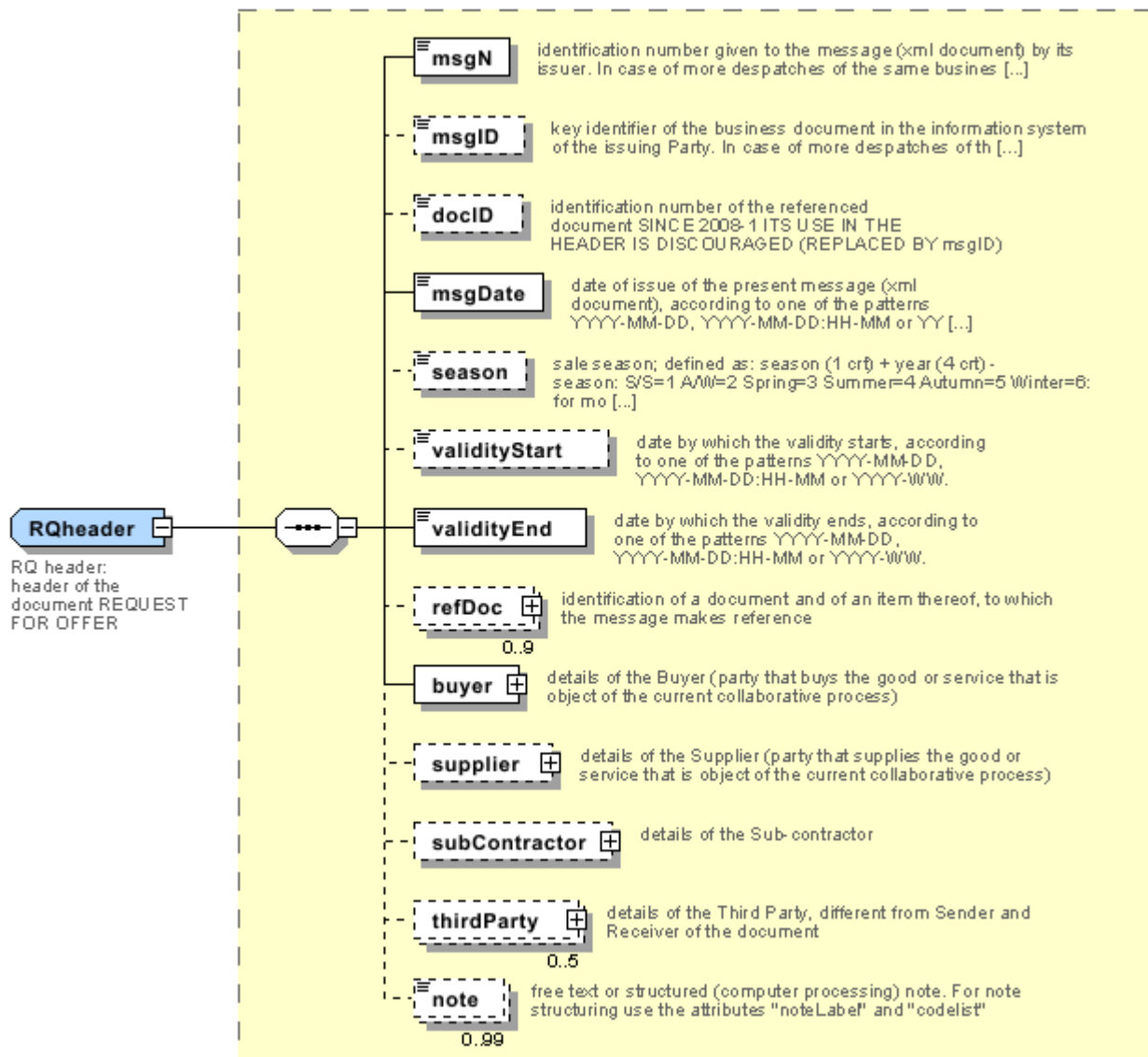
- N: new table
- U: updated properties

NT100 - eBIZ TCFUpstream version
NT11 - transport causal
NT12 - data source
NT16 - VAT rate or code
NT18 - message function
NT2 - third party qualifier
NT29 - format of a date
NT3 - data format
NT31 - yarn family
NT6 - coding system owner/issuer
NT7 - unit of measure (U)
T1 - terms of payment
T10 - ISO3166 - Country
T19 - fibre type
T2 - Modes of payment
T201 - type of job on yarn
T21 - type of document
T24 - yarn characteristics type
T261 - type of job technology for yarn
T271 - machine type for yarn operation
T281 - parameter type for yarn operation
T3 - terms of delivery
T38 - transport conditions
T40 - type of transport means
T41 - type of Allowance or Charge
T61 - duty or tax or fee type
T62 - duty or tax or fee category
T8 - Modes of Transport
T9 - ISO4217 - Currency

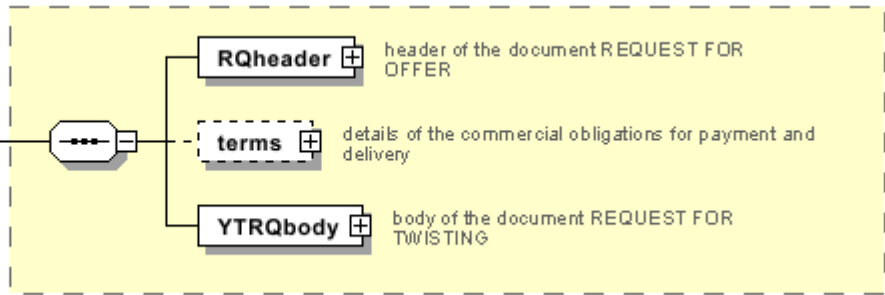
Annex A

Representative images of the principal complex elements' structure.

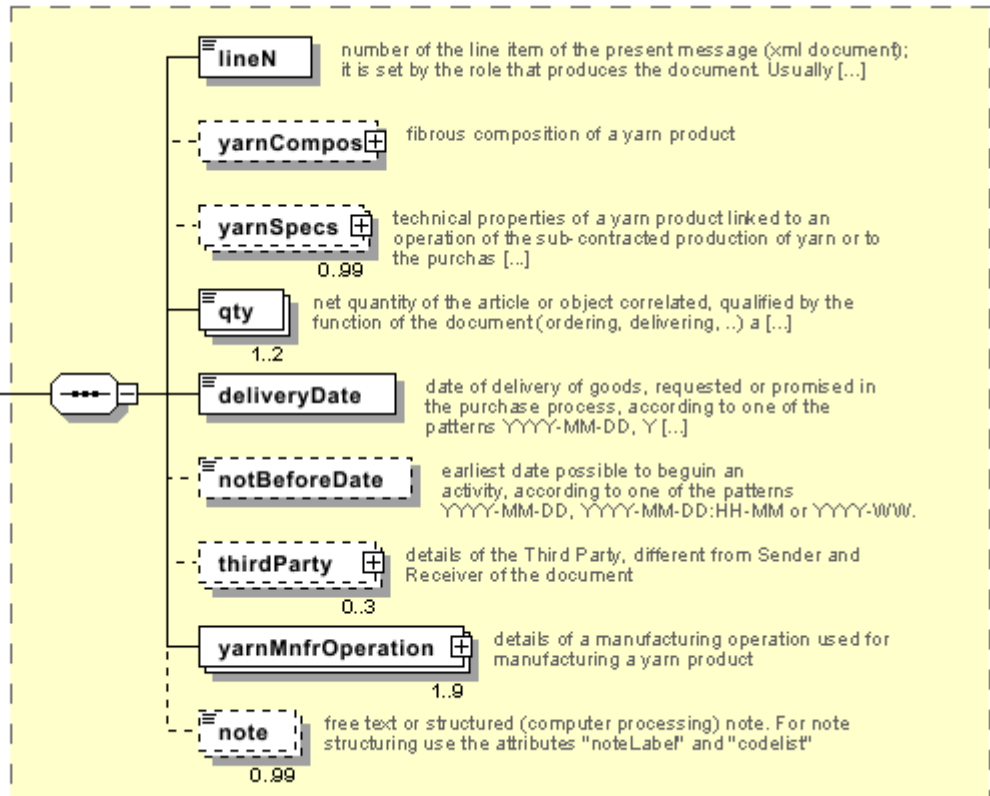




YARNTwistRequest
 YARNTwistRequest: Request to Sub-contractor for Twisting



YTRQitem
 YTRQ item:
 line of the document REQUEST FOR TWISTING



Annex B

NT100 - eBIZ TCFUpstream version

dictionary version

Agency name: eBIZ

tabella cod.: NT100

File codes list (Generic code): http://www.ebiz.enea.it/moda-ml/repository/codelist/v2018-1/gc_NT100.xml

| Code | Description | Adoption note | Version status | Date of insertion |
|--------|-------------|---------------|----------------|-------------------|
| 2013-1 | v2013-1 | | | 01/07/2013 |
| 2018-1 | v2018-1 | | (N) | 04/11/2018 |
| draft | draft | | (N) | 08/09/2017 |

NT11 - transport causal

reason for the transport

Agency name: eBIZ

tabella cod.: NT11

File codes list (Generic code): http://www.ebiz.enea.it/moda-ml/repository/codelist/v2018-1/gc_NT11.xml

| Code | Description | Adoption note | Version status | Date of insertion |
|------|-----------------------|---------------|----------------|-------------------|
| FOC | free of charge | | | |
| FRW | return from re-works | | | |
| FST | return from storage | | | |
| FWW | return from view | | | |
| FWK | return from works | | | |
| IST | in storage | | | |
| NWK | return non-worked | | | |
| RJC | return from rejection | | | |
| SEL | to sell | | | |
| STO | to storage | | | |
| VEW | to view | | | |
| WRK | to works | | | |

NT12 - data source

party who has provided the data

Agency name: eBIZ

tabella cod.: NT12

File codes list (Generic code): http://www.ebiz.enea.it/moda-ml/repository/codelist/v2018-1/gc_NT12.xml

| Code | Description | Adoption note | Version status | Date of insertion |
|------|---------------------|---------------|----------------|-------------------|
| AC | internal test | | | |
| CO | external test | | | |
| CV | test after steaming | | | |

NT16 - VAT rate or code

VAT rate or code (DEPRECATED, use dtScheme element)

tabella cod.: NT16

File codes list (Generic code): http://www.ebiz.enea.it/moda-ml/repository/codelist/v2018-1/gc_NT16.xml

NT18 - message function

function performed by the present message with regards to the transmission

Agency name: eBIZ

tabella cod.: NT18

File codes list (Generic code): http://www.ebiz.enea.it/moda-ml/repository/codelist/v2018-1/gc_NT18.xml

| Code | Description | Adoption note | Version status | Date of insertion |
|------|-------------------------------------|---------------|----------------|-------------------|
| CA | delete this document | | | 01/07/2013 |
| CP | copy | | | |
| OR | original | | | |
| RC | re-transmission for data correction | | | |
| RT | re-transmission | | | |

NT2 - third party qualifier

Third Party role qualifier

Agency name: eBIZ

tabella cod.: NT2

File codes list (Generic code): http://www.ebiz.enea.it/moda-ml/repository/codelist/v2018-1/gc_NT2.xml

| Code | Description | Adoption note | Version status | Date of insertion |
|------|--------------------------------------|---------------|----------------|-------------------|
| AG | Sales Agent | | | |
| AU | Auditor | | (N) | 08/04/2019 |
| CE | Certification authority | | (N) | 08/04/2019 |
| CO | Quality Controller | | | |
| DC | Response to | | | |
| DF | Invoicee | | | |
| DI | Copy to (CC) | | | 28/10/2014 |
| DM | Consignee | | | |
| DP | Consignment address (Delivery Party) | | | |
| IM | Importer | | | |
| OR | Originator | | | 10/09/2014 |
| SC | Sub contractor | | (N) | 10/04/2019 |
| SM | Service/ePlatform manager | | (N) | 08/04/2019 |
| SP | Forwarder | | | |
| TX | Tax Representative | | | |

NT29 - format of a date

format used for the date

Agency name: eBIZ

tabella cod.: NT29

File codes list (Generic code): http://www.ebiz.enea.it/moda-ml/repository/codelist/v2018-1/gc_NT29.xml

| Code | Description | Adoption note | Version status | Date of insertion |
|------|------------------|---------------|----------------|-------------------|
| D | YYYY-MM-DD | | | |
| M | YYYY-MM-DD:HH-MM | | | |
| W | YYYY-WW | | | |

NT3 - data format

format of a string according to a customized User rule (local rule)

Agency name: eBIZ

tabella cod.: NT3

File codes list (Generic code): http://www.ebiz.enea.it/moda-ml/repository/codelist/v2018-1/gc_NT3.xml

| Code | Description | Adoption note | Version status | Date of insertion |
|------|-----------------|---------------|----------------|-------------------|
| EN4 | GS1-GLN | | | 01/07/2013 |
| MD | mutually agreed | | | |

NT31 - yarn family

yarn classification according to the manufacturing process

Agency name: eBIZ

tabella cod.: NT31

File codes list (Generic code): http://www.ebiz.enea.it/moda-ml/repository/codelist/v2018-1/gc_NT31.xml

| Code | Description | Adoption note | Version status | Date of insertion |
|------|-------------|---------------|----------------|-------------------|
| CAN | carded | | | |
| EXT | extrusion | | | |
| FSE | dry-spun | | | |
| FUM | wet-spun | | | |
| OPE | open end | | | |
| PAN | combed | | | |
| REG | regenerated | | | |
| SMP | half-combed | | | |

NT6 - coding system owner/issuer

code specifying the organisation who has created or owns the coding or numbering system

Agency name: eBIZ

tabella cod.: NT6

File codes list (Generic code): http://www.ebiz.enea.it/moda-ml/repository/codelist/v2018-1/gc_NT6.xml

| Code | Description | Adoption note | Version status | Date of insertion |
|------|------------------------------|---------------|----------------|-------------------|
| CL | Customer/buyer | | | |
| CO | Quality Controller | | | |
| EB | eBIZ | replaces 'ML' | (N) | 18/03/2019 |
| EN | GS1 (ex-EAN International) | | | |

| | | | | |
|----|------------------|------------|-----|------------|
| ES | e-Stockflow | | | |
| FO | Supplier | | | |
| GS | GS1 | | | 01/07/2013 |
| MF | VAT identifier | | (U) | |
| ML | Moda-ML | DEPRECATED | (U) | |
| SP | Service Provider | | | |

NT7 - unit of measure (U)

specification of the unit of measure, it is a sub set of table Unit of Measure Code - UN/ECE REC 20 delivered by United Nations Economic Commission for Europe (UN/ECE)

Agency name: eBIZ / UN/ECE

tabella cod.: NT7

File codes list (Generic code): http://www.ebiz.enea.it/moda-ml/repository/codelist/v2018-1/gc_NT7.xml

Other link: <http://docs.oasis-open.org/ubl/os-UBL-2.1/cl/gc/default/UnitOfMeasureCode-2.1.gc#>

| Code | Description | Adoption note | Version status | Date of insertion |
|---------|-------------------|---------------|----------------|-------------------|
| CMK | square centimetre | | (N) | 20/12/2017 |
| CMQ | cubic centimetre | | (N) | 20/12/2017 |
| CMT | centimetre | | | |
| CNE | centiNewton | | | |
| CO2TON | ton of CO2 | | (N) | 10/09/2014 |
| COUPLES | couples | | | |
| DMQ | cubic decimetre | | | |
| E37 | pixel | | (N) | 11/04/2018 |
| GRM | gram | | | |
| HUR | hour | | | |
| INH | inch | | | |
| KGM | kilogram | | | |
| KMT | kilometer | | | |
| KWH | kilowatthours | | (N) | 10/09/2014 |
| LBR | pound | | | |
| MIN | minute | | | |
| MMK | square millimetre | | (N) | 20/12/2017 |
| MTK | square metre | | (N) | 20/12/2017 |
| MTQ | cubic metre | | | |

| | | | | |
|-----|------------------|--|-----|--|
| MTR | metre | | | |
| NMB | numero | | | |
| ONZ | ounce | | | |
| P1 | percent | | | |
| PPM | parts per milion | | | |
| PZ | piece | | (U) | |
| RPM | rounds per metre | | | |
| YRD | yard | | | |

T1 - terms of payment

code specifying the terms or time by which the payment must be done

Agency name: eBIZ

tabella cod.: T1

File codes list (Generic code): http://www.ebiz.enea.it/moda-ml/repository/codelist/v2018-1/gc_T1.xml

| Code | Description | Adoption note | Version status | Date of insertion |
|----------------|----------------------------------------|---------------|----------------|-------------------|
| ANTICIP | PAYMENT IN ADVANCE | | | |
| BLCOLLECT/120D | BILL OF LADING 120 DD | | | |
| BLCOLLECT/30D | BILL OF LADING 30 DD | | | |
| BLCOLLECT/60D | BILL OF LADING 60 DD | | | |
| BLCOLLECT/90D | BILL OF LADING 90 DD | | | |
| CASH | PAYMENT ON DELIVERY | | | |
| CASHINV | PAYMENT ON RECEIPT OF INVOICE | | | |
| CREDOC/0D | DOCUMENTARY CREDIT FOR PAYM. AT SIGHT | | | |
| CREDOC/120 | DOCUMENTARY CREDIT FOR PAYM. AT 120 DD | | | |
| CREDOC/150 | DOCUMENTARY CREDIT FOR PAYM. AT 150 DD | | | |
| CREDOC/180 | DOCUMENTARY CREDIT FOR PAYM. AT 180 DD | | | |
| CREDOC/30D | DOCUMENTARY CREDIT FOR PAYM. AT 30 DD | | | |
| CREDOC/45D | DOCUMENTARY CREDIT FOR PAYM. AT 45 DD | | | |
| CREDOC/60 | DOCUMENTARY CREDIT FOR PAYM. AT 60 DD | | | |
| CREDOC/90 | DOCUMENTARY CREDIT FOR PAYM. AT 90 DD | | | |
| DEL/10 | PAYMENT AT 10 DD AFTER DELIVERY | | | |
| DOCOLLECT/120D | DOCUMENTARY COLLECTION AT 120 DD | | | |

| | | | | |
|----------------|-------------------------------------------------|--|--|--|
| DOCOLLECT/30D | DOCUMENTARY COLLECTION AT 30 DD | | | |
| DOCOLLECT/60D | DOCUMENTARY COLLECTION AT 60 DD | | | |
| DOCOLLECT/90D | DOCUMENTARY COLLECTION AT 90 DD | | | |
| INV/120D | PAYMENT AT 120 DD AFTER RECEIPT OF INVOICE | | | |
| INV/150D | PAYMENT AT 150 DD AFTER RECEIPT OF INVOICE | | | |
| INV/180D | PAYMENT AT 180 DD AFTER RECEIPT OF INVOICE | | | |
| INV/30D | PAYMENT AT 30 DD AFTER RECEIPT OF INVOICE | | | |
| INV/45D | PAYMENT AT 45 DD AFTER RECEIPT OF INVOICE | | | |
| INV/60D | PAYMENT AT 60 DD AFTER RECEIPT OF INVOICE | | | |
| INV/90D | PAYMENT AT 90 DD AFTER RECEIPT OF INVOICE | | | |
| INVULTIMO | PAYMENT AT END MONTH RECEIPT INVOICE | | | |
| INVULTIMO/10D | PAYMENT 10 DD AFTER END MONTH RECEIPT INVOICE | | | |
| INVULTIMO/120D | PAYMENT 120 DD AFTER END MONTH RECEIPT INVOICE | | | |
| INVULTIMO/150D | PAYMENT 150 DD AFTER END MONTH RECEIPT INVOICE | | | |
| INVULTIMO/180D | PAYMENT 180 DD AFTER END MONTH RECEIPT INVOICE | | | |
| INVULTIMO/240D | PAYMENT 240 DD AFTER END MONTH RECEIPT INVOICE | | | |
| INVULTIMO/30D | PAYMENT 30 DD AFTER END MONTH RECEIPT INVOICE | | | |
| INVULTIMO/45D | PAYMENT 45 DD AFTER END MONTH RECEIPT INVOICE | | | |
| INVULTIMO/60D | PAYMENT 60 DD AFTER END MONTH RECEIPT INVOICE | | | |
| INVULTIMO/90D | PAYMENT 90 DD AFTER END MONTH RECEIPT INVOICE | | | |
| NOPAY | WITHOUT PAYMENT | | | |
| RECREDOC/0D | IRREVOC. DOCUMENTARY CREDIT FOR PAYM. AT SIGHT | | | |
| RECREDOC/120D | IRREVOC. DOCUMENTARY CREDIT FOR PAYM. AT 120 DD | | | |
| RECREDOC/150D | IRREVOC. DOCUMENTARY CREDIT FOR PAYM. AT 150 DD | | | |
| RECREDOC/180D | IRREVOC. DOCUMENTARY CREDIT FOR PAYM. AT 180 DD | | | |

| | | | | |
|--------------|------------------------------------------------|--|--|--|
| RECREDOC/30D | IRREVOC. DOCUMENTARY CREDIT FOR PAYM. AT 30 DD | | | |
| RECREDOC/45D | IRREVOC. DOCUMENTARY CREDIT FOR PAYM. AT 45 DD | | | |
| RECREDOC/60D | IRREVOC. DOCUMENTARY CREDIT FOR PAYM. AT 60 DD | | | |
| RECREDOC/90D | IRREVOC. DOCUMENTARY CREDIT FOR PAYM. AT 90 DD | | | |
| ULTIMO | PAYMENT BY END MONTH OF DELIVERY | | | |
| ULTIMO/10 | PAYMENT AT 10 DD AFTER END MONTH OF DELIVERY | | | |

T10 - ISO3166 - Country

code of the nation

Agency name: ISO

tabella cod.: T10

File codes list (Generic code): http://www.ebiz.enea.it/moda-ml/repository/codelist/v2018-1/gc_T10.xml

Table not printed: there are 239 elements, more than the maximum specified for printing: 99.

T19 - fibre type

type of fibre used in a textile product

Agency name: eBIZ

tabella cod.: T19

File codes list (Generic code): http://www.ebiz.enea.it/moda-ml/repository/codelist/v2018-1/gc_T19.xml

| Code | Description | Adoption note | Version status | Date of insertion |
|------|----------------|---------------|----------------|-------------------|
| AB | abaca | | | 20/08/2018 |
| AC | acetate | | | |
| AF | other fibres | | | |
| AG | alginic fibre | | | |
| AL | alfa | | | 20/08/2018 |
| CA | hemp | | | |
| CC | coir (coconut) | | | 20/08/2018 |
| CL | chlorofibre | | | |
| CO | cotton | | | |

| | | | | |
|----|---------------------------------------------|--|--|------------|
| CU | cuprous | | | |
| EA | elastan | | | |
| EL | Elastodiene | | | 20/08/2018 |
| FL | fluorofibre | | | |
| GI | broom | | | 20/08/2018 |
| GL | textile glass | | | |
| HA | hair | | | 20/08/2018 |
| HE | henequen | | | 20/08/2018 |
| HL | mixed linen | | | |
| HL | cotton linen union | | | 20/08/2018 |
| JU | jute | | | |
| KE | kenaf | | | 20/08/2018 |
| KP | kapoc | | | 20/08/2018 |
| LI | linen | | | |
| LY | lyocell | | | 20/08/2018 |
| MA | modacrylic | | | |
| MD | modal | | | |
| ME | metallized | | | |
| MG | maguey | | | 20/08/2018 |
| PA | polyamide | | | |
| PB | polyureic | | | |
| PC | acrylic | | | |
| PE | polyethylene | | | |
| PI | paper | | | 20/08/2018 |
| PL | polyester | | | |
| PM | polyimide | | | |
| PP | polypropylene | | | |
| PR | proteic | | | |
| PU | polyurethane | | | |
| RA | mamie | | | 20/08/2018 |
| SE | silk | | | |
| SI | sisal | | | 20/08/2018 |
| SN | sun | | | 20/08/2018 |
| TA | triacetate | | | |
| TR | textile residues or unspecified composition | | | 20/08/2018 |

| | | | | |
|----|-------------|--|--|------------|
| TV | trivinyl | | | |
| VI | viscose | | | |
| VY | vinylal | | | |
| WA | angora | | | |
| WB | beaver | | | 20/08/2018 |
| WC | cashgora | | | |
| WG | vicuna | | | |
| WK | camel | | | |
| WL | llama | | | |
| WM | mohair | | | |
| WN | lapin | | | 20/08/2018 |
| WO | wool | | | |
| WP | alpaca | | | |
| WS | cashmere | | | |
| WT | Oteer | | | 20/08/2018 |
| WU | guanaco | | | |
| WV | virgin wool | | | |
| WY | yack | | | |

T2 - Modes of payment

way or means of payment

Agency name: eBIZ

tabella cod.: T2

File codes list (Generic code): http://www.ebiz.enea.it/moda-ml/repository/codelist/v2018-1/gc_T2.xml

| Code | Description | Adoption note | Version status | Date of insertion |
|------|------------------------------|---------------|----------------|-------------------|
| BB | bank transfer | | | |
| IA | collection through Agent | | | |
| IS | collection through Forwarder | | | |
| RB | bank receipt | | | |
| RD | remittance | | | |
| SW | bank SWIFT | | | |
| TR | bank draft | | | |

T201 - type of job on yarn

operation of a work cycle for yarn

Agency name: eBIZ

tabella cod.: T201

File codes list (Generic code): http://www.ebiz.enea.it/moda-ml/repository/codelist/v2018-1/gc_T201.xml

| Code | Description | Adoption note | Version status | Date of insertion |
|------|------------------------|---------------|----------------|-------------------|
| 08 | to re-comb | | | |
| 09 | to prepare | | | |
| 10 | to card | | | |
| 11 | to spin | | | |
| 12 | to steam | | | |
| 13 | to wind | | | |
| 14 | doubling | | | |
| 15 | to twist | | | |
| 16 | to unwind | | | |
| 17 | to singe | | | |
| 18 | to raise | | | |
| 19 | to reel | | | |
| 20 | to re-wind | | | |
| 21 | to shrink | | | |
| 22 | to coat | | | |
| 23 | to garnett | | | |
| 24 | to print | | | |
| 25 | to dye | | | |
| 26 | to boil | | | |
| 27 | to scour | | | |
| 28 | to dry | | | |
| 99 | other, see note if any | | | 01/07/2013 |

T21 - type of document

type or class to which the referenced document belongs

Agency name: eBIZ

tabella cod.: T21

File codes list (Generic code): http://www.ebiz.enea.it/moda-ml/repository/codelist/v2018-1/gc_T21.xml

| Code | Description | Adoption note | Version status | Date of insertion |
|------|------------------------------------|---------------|----------------|-------------------|
| BOR | blanket order | | (N) | 01/02/2018 |
| CAT | Price catalogue - tech sheet | | | |
| CEO | Certificate of origin | | (N) | 13/04/2018 |
| CER | Certificate | | (N) | 13/04/2018 |
| COC | colour card | | | |
| CRN | Credit note | | | 08/09/2017 |
| CTO | Checking order | | | 01/07/2013 |
| CTR | Contract | | (U) | |
| CXF | CxF3 file | | | 01/07/2013 |
| DAD | Darn order | | | |
| DDT | ddt | | | |
| DEA | Despatch advise | | | |
| DER | Despatch request | | | |
| DR | Document Request | | | 02/12/2014 |
| FOR | Forecast | | | 02/12/2014 |
| GSO | Garment stock offer | | | |
| GSX | Garment stock offer change | | | |
| INV | Invoice | | | |
| KCC | Knitting-Clothing Commission Order | | | 02/12/2014 |
| KCI | Garment in Work Inventory Report | | | 02/12/2014 |
| M2M | Made to Measure Production Order | | | 02/12/2014 |
| MAS | Master marker | | | |
| MCI | Visual merchandising instruction | | (N) | 13/04/2018 |
| OCH | Order change | | | |
| OFF | Offer | | | |
| ORD | Purchase order | | | |
| ORP | Order response | | | |
| OSR | order status request | | | |
| OSS | Offer status | | | 02/12/2014 |
| OST | Order status | | | |
| OUR | our reference | | | |
| QR | Quality Report | | | 02/12/2014 |

| | | | | |
|-----|-------------------------------------------|--|-----|------------|
| RAI | Raw Material in Work Inventory Report | | | 02/12/2014 |
| RDC | Raw dyeing commission order | | | |
| RDH | Raw dyeing order change | | | |
| RDR | Raw dyeing order response | | | |
| REA | Receiving advise | | | |
| REQ | Request for Offer | | | |
| RET | Return | | | 02/12/2014 |
| RSC | Spinning commission order | | | |
| RSH | Spinning order change | | | |
| RSR | Spinning order response | | | |
| SCL | process sheet | | | |
| TFC | Textile dyeing-finishing commission order | | | |
| TFX | Textile Dyeing-Finishing Order Change | | | 02/12/2014 |
| TPC | Textile printing commission order | | | |
| TPX | Textile Printing Order Change | | | 02/12/2014 |
| TWI | Textile in work inventory | | | |
| VMI | visual merchandising instructions | | (N) | 01/02/2018 |
| WAC | Warping commission order | | | |
| WEC | Weaving commission order | | | |
| YDC | Yarn dyeing commission order | | | |
| YDH | Yarn dyeing order change | | | |
| YDR | Yarn dyeing order response | | | |
| YTC | Twisting commission order | | | |
| YWI | Yarn in work inventory | | | |

T24 - yarn characteristics type

physical or mechanical parameter used to define a property of a yarn

Agency name: eBIZ

tabella cod.: T24

File codes list (Generic code): http://www.ebiz.enea.it/moda-ml/repository/codelist/v2018-1/gc_T24.xml

| Code | Description | Adoption note | Version status | Date of insertion |
|------|-------------------------|---------------|----------------|-------------------|
| ALL | elongation | | | |
| AMIN | minimum yarn elongation | | | |
| CV | CV | | | |

| | | | | |
|------|------------------------------------------|--|--|--|
| DE | delta E | | | |
| NFIN | number of cases diameter less than X% | | | |
| NGRO | number of cases diameter greater than X% | | | |
| NOD | standard nub | | | |
| NOS | Splicer nub | | | |
| PLH | H hairiness | | | |
| PLL | pilling | | | |
| RES | tensile strength | | | |
| RMIN | minimum tensile strength | | | |
| RTR | shrinkage | | | |
| SLA | fastness to light (ISO 105-B02) | | | |
| SLB | fastness to water washing (ISO 105-C06) | | | |
| SLC | fastness to dry washing (ISO 105-D01) | | | |
| SLD | fastness to water drop (ISO 105-E07) | | | |
| SLW | fastness to water (ISO 105-E01) | | | |
| SLX | fastness to Xeno light (ISO 105-E01) | | | |
| STW | S-twist | | | |
| TIN | english count | | | |
| TMT | metric count | | | |
| TTX | tex count | | | |
| ZTW | Z-twist | | | |

T261 - type of job technology for yarn

operation technology for yarn

Agency name: eBIZ

tabella cod.: T261

File codes list (Generic code): http://www.ebiz.enea.it/moda-ml/repository/codelist/v2018-1/gc_T261.xml

| Code | Description | Adoption note | Version status | Date of insertion |
|------|-------------------|---------------|----------------|-------------------|
| 01 | standard spinning | | | |
| 02 | spinning frames | | | |
| 03 | compact spinning | | | |
| 04 | pims winding | | | |
| 05 | cones winding | | | |
| 06 | package dyeing | | | |

| | | | | |
|----|------------------------|--|--|------------|
| 07 | hank dyeing | | | |
| 08 | | | | |
| 09 | reactive dyeing | | | |
| 10 | direct dyeing | | | |
| 11 | natural dyeing | | | |
| 12 | heat sensitive dyeing | | | |
| 13 | light sensitive dyeing | | | |
| 14 | pigments dyeing | | | |
| 15 | shaded dyeing | | | |
| 16 | tye and dye | | | |
| 17 | | | | |
| 18 | | | | |
| 19 | | | | |
| 20 | acid dyeing | | | |
| 21 | pre-metallized dyeing | | | |
| 22 | | | | |
| 23 | basic dyeing | | | |
| 99 | other, see note if any | | | 01/07/2013 |

T271 - machine type for yarn operation

machine used in an operation of a work cycle for yarn

Agency name: eBIZ

tabella cod.: T271

File codes list (Generic code): http://www.ebiz.enea.it/moda-ml/repository/codelist/v2018-1/gc_T271.xml

| Code | Description | Adoption note | Version status | Date of insertion |
|------|------------------------|---------------|----------------|-------------------|
| 01 | RIETER | | | |
| 02 | ZINZER | | | |
| 03 | MURATA | | | |
| 04 | SAVIO | | | |
| 05 | TEXILMONTAGGIO | | | |
| 06 | BIGAGLI | | | |
| 07 | GALAN | | | |
| 08 | GAUDINO | | | |
| 99 | other, see note if any | | | 01/07/2013 |

T281 - parameter type for yarn operation

setting parameter of a machine used in an operation of a work cycle for yarn

Agency name: eBIZ

tabella cod.: T281

File codes list (Generic code): http://www.ebiz.enea.it/moda-ml/repository/codelist/v2018-1/gc_T281.xml

| Code | Description | Adoption note | Version status | Date of insertion |
|------|----------------|---------------|----------------|-------------------|
| 01 | ring diameter | | | |
| 02 | package weight | | | |
| 03 | yarn clearance | | | |

T3 - terms of delivery

specification of the terms of trade (INCOTERMS)

Agency name: Incoterms

tabella cod.: T3

File codes list (Generic code): http://www.ebiz.enea.it/moda-ml/repository/codelist/v2018-1/gc_T3.xml

| Code | Description | Adoption note | Version status | Date of insertion |
|------|----------------------------------------------------------------|---------------------------------------------|----------------|-------------------|
| CFR | COST AND FREIGHT (named port of destination) | | | |
| CIF | COST, INSURANCE AND FREIGHT (named port of destination) | | | |
| CIP | CARRIAGE AND INSURANCE PAID (named place of destination) | | | |
| CPA | CARRIAGE PAID (named place of destination) | | | |
| DAF | DELIVERED AT FRONTIER (named place) | according to Incoterms® 2010 it is obsolete | | 08/12/2017 |
| DAP | Delivered at Place of destination (named place of destination) | according to Incoterms® 2010 | | 08/12/2017 |
| DAT | Delivered at Terminal (named place of destination) | according to Incoterms® 2010 | | 08/12/2017 |
| DDP | DELIVERED DUTY PAID (named place of destination) | | | |

| | | | | |
|---------|----------------------------------------------------|------------------------------------------------------|--|------------|
| DD U | DELIVERED DUTY UNPAID (named place of destination) | according to Incoterms® 2010 it is obsolete, use DAP | | 08/12/2017 |
| DE Q | DELIVERED EX-QUAY (named port of destination) | according to Incoterms® 2010 it is obsolete | | 08/12/2017 |
| DE S | DELIVERED EX-SHIP (named port of destination) | according to Incoterms® 2010 it is obsolete | | 08/12/2017 |
| EX W | EX WORKS (named place) | | | |
| FA S | FREE ALONGSIDE SHIP (named port of shipment) | | | |
| FC A | FREE CARRIER (named place) | | | |
| FO B | FREE ON BOARD (named port of shipment) | | | |

T38 - transport conditions

special condition of transport or special service requested to the Forwarder

tabella cod.: T38

File codes list (Generic code): http://www.ebiz.enea.it/moda-ml/repository/codelist/v2018-1/gc_T38.xml

| Code | Description | Adoption note | Version status | Date of insertion |
|------|----------------------------------------|---------------|----------------|-------------------|
| ACC | arrange customs clearance | | | |
| CAL | Carrier loads | | | |
| CAU | Carrier unloads | | | |
| CMR | CMR carnet | | | |
| FFN | freight forwarders national conditions | | | |
| FLD | special agreement for full loading | | | |
| NCC | do not arrange customs clearance | | | |
| PPB | packaging paid by Buyer | | | |
| PPS | packaging paid by Supplier | | | |
| PRO | proof of delivery | | | |
| RFR | return container free | | | |
| RPC | return container paid by Customer | | | |
| RPS | return container paid by Supplier | | | |
| SHL | Shipper loads | | | |
| SHU | Consignee unloads | | | |

T40 - type of transport means

means of transport, in general or referred to a specific leg

Agency name: eBIZ

tabella cod.: T40

File codes list (Generic code): http://www.ebiz.enea.it/moda-ml/repository/codelist/v2018-1/gc_T40.xml

| Code | Description | Adoption note | Version status | Date of insertion |
|------|-------------|---------------|----------------|-------------------|
| AIR | aircraft | | | |
| SHP | ship | | | |
| TRU | truck | | | |
| VAN | van | | | |

T41 - type of Allowance or Charge

coded specification of an Allowance or Charge (elaborated from UNECE 4465)

Agency name: eBIZ

tabella cod.: T41

File codes list (Generic code): http://www.ebiz.enea.it/moda-ml/repository/codelist/v2018-1/gc_T41.xml

| Code | Description | Adoption note | Version status | Date of insertion |
|------|-------------------------|---------------------|----------------|-------------------|
| 1 | Agreed settlement | | (N) | 19/08/2018 |
| 10 | Costs for draft | | (N) | 19/08/2018 |
| 11 | Bank charges | DEPRECATED, use CBK | (N) | 19/08/2018 |
| 12 | Agent commission | | (N) | 19/08/2018 |
| 14 | Wrong delivery | | (N) | 19/08/2018 |
| 15 | Goods returned to agent | | (N) | 19/08/2018 |
| 16 | Goods partly returned | | (N) | 19/08/2018 |
| 17 | Transport damage | | (N) | 19/08/2018 |
| 19 | Trade discount | | (N) | 19/08/2018 |

| | | | | |
|----|----------------------------------|---------------------|-----|------------|
| 2 | Below specification goods | | (N) | 19/08/2018 |
| 20 | Deduction for late delivery | DEPRECATED, use CWB | (N) | 19/08/2018 |
| 21 | Advertising costs | | (N) | 19/08/2018 |
| 22 | Customs duties | | (N) | 19/08/2018 |
| 23 | Telephone and postal costs | | (N) | 19/08/2018 |
| 24 | Repair costs | | (N) | 19/08/2018 |
| 25 | Attorney fees | | (N) | 19/08/2018 |
| 26 | Taxes | | (N) | 19/08/2018 |
| 3 | Damaged goods | | (N) | 19/08/2018 |
| 30 | Direct payment to seller | | (N) | 19/08/2018 |
| 32 | Goods not delivered | | (N) | 19/08/2018 |
| 33 | Late delivery | | (N) | 19/08/2018 |
| 35 | Goods returned | | (N) | 19/08/2018 |
| 36 | Invoice not received | | (N) | 19/08/2018 |
| 37 | Credit note to debtor/not to us | | (N) | 19/08/2018 |
| 38 | Deducted bonus | | (N) | 19/08/2018 |
| 39 | Deducted discount | | (N) | 19/08/2018 |
| 4 | Short delivery | | (N) | 19/08/2018 |
| 40 | Deducted freight costs | | (N) | 19/08/2018 |
| 41 | Deduction against other invoices | | (N) | 19/08/2018 |
| 42 | Credit balance(s) | | (N) | 19/08/2018 |
| 45 | Debit note to seller | | (N) | 19/08/2018 |

| | | | | |
|----|--------------------------------------------------------------------|--|-----|------------|
| 46 | Discount beyond terms | | (N) | 19/08/2018 |
| 48 | Allowance/charge error | | (N) | 19/08/2018 |
| 49 | Substitute product | | (N) | 19/08/2018 |
| 50 | Terms of sale error | | (N) | 19/08/2018 |
| 52 | Wrong invoice | | (N) | 19/08/2018 |
| 53 | Duplicate invoice | | (N) | 19/08/2018 |
| 54 | Weight error | | (N) | 19/08/2018 |
| 55 | Additional charge not authorized | | (N) | 19/08/2018 |
| 56 | Incorrect discount | | (N) | 19/08/2018 |
| 57 | Price change | | (N) | 19/08/2018 |
| 58 | Variation | | (N) | 19/08/2018 |
| 59 | Chargeback | | (N) | 19/08/2018 |
| 65 | Settlement to agent | | (N) | 19/08/2018 |
| 66 | Cash discount | | (N) | 19/08/2018 |
| 7 | Payment on account | | (N) | 19/08/2018 |
| 70 | Wrong monetary amount resulting from incorrect free goods quantity | | (N) | 19/08/2018 |
| 72 | Temporary special promotion | | (N) | 19/08/2018 |
| 73 | Difference in tax rate | | (N) | 19/08/2018 |
| 74 | Quantity discount | | (N) | 19/08/2018 |
| 75 | Promotion discount | | (N) | 19/08/2018 |
| 76 | Cancellation deadline passed | | (N) | 19/08/2018 |
| 77 | Pricing discount | | (N) | 19/08/2018 |

| | | | | |
|---------|--------------------------------------|--|-----|------------|
| 78 | Volume discount | | (N) | 19/08/2018 |
| 79 | Sundry discount | | (N) | 19/08/2018 |
| 8 | Returnable container charge included | | (N) | 19/08/2018 |
| 9 | Invoice error | | (N) | 19/08/2018 |
| AW A | bonus for works ahead of schedule | | | |
| CBK | bank charges | | | |
| CC R | servizio di corriere | | | |
| CIN | insurance | | | |
| CLB | labelling | | | |
| CPK | packing | | | |
| CSP | special packing | | | |
| CW B | penalty for works behind schedule | | | |

T61 - duty or tax or fee type

duty or tax or fee type

Agency name: eBIZ

tabella cod.: T61

File codes list (Generic code): http://www.ebiz.enea.it/moda-ml/repository/codelist/v2018-1/gc_T61.xml

| Code | Description | Adoption note | Version status | Date of insertion |
|------|-------------------|---------------|----------------|-------------------|
| BOL | stamp duty | | | 01/07/2013 |
| CUD | customs duty | | | 01/07/2013 |
| ENV | environmental tax | | | 01/07/2013 |
| FRE | no tax | | | 01/07/2013 |
| OTH | other tax charges | | | 01/07/2013 |
| VAT | value added tax | | | 01/07/2013 |

T62 - duty or tax or fee category

duty or tax or fee category

Agency name: eBIZ

tabella cod.: T62

File codes list (Generic code): http://www.ebiz.enea.it/moda-ml/repository/codelist/v2018-1/gc_T62.xml

| Code | Description | Adoption note | Version status | Date of insertion |
|------|---------------------------|---------------|----------------|-------------------|
| AA | lower than standard rate | | | 01/07/2013 |
| E | tax not applicable | | | 01/07/2013 |
| H | higher than standard rate | | | 01/07/2013 |
| O | outside scope of tax | | | 01/07/2013 |
| S | standard rate | | | 01/07/2013 |
| Z | zero rate goods | | | 01/07/2013 |

T8 - Modes of Transport

way of transport, in general or referred to the specified leg

Agency name: eBIZ

tabella cod.: T8

File codes list (Generic code): http://www.ebiz.enea.it/moda-ml/repository/codelist/v2018-1/gc_T8.xml

| Code | Description | Adoption note | Version status | Date of insertion |
|------|------------------------|---------------|----------------|-------------------|
| 1 | MARITIME TRANSPORT | | | |
| 10 | Courier | | | 01/07/2013 |
| 2 | RAIL TRANSPORT | | | |
| 3 | ROAD TRANSPORT | | | |
| 4 | AIR TRANSPORT | | | |
| 5 | MAIL | | | |
| 6 | AIR + SHIP TRANSPORT | | | |
| 8 | INLAND WATER TRANSPORT | | | |
| 9 | MODE UNKNOWN | | | |

T9 - ISO4217 - Currency

currency code

Agency name: ISO

tabella cod.: T9

File codes list (Generic code): http://www.ebiz.enea.it/moda-ml/repository/codelist/v2018-1/gc_T9.xml

Table not printed: there are 205 elements, more than the maximum specified for printing: 99.

Annex C

New or changed elements towards previous version

Changes or added elements (changes in description excluded; changes in aggregation notes and best practice included): 91

| Test Type | Tag | Status | Item type | Changes related to |
|------------|----------------------|---------|-----------------------------|---------------------------------------------------------|
| Attribute | AC_amount | NEW | AC amount | Has NEW attribute: data currency |
| Element(E) | AC_categoryText | UPDATED | AC category text | Property: Length_Max Old value: 70 New value: 250 |
| Attribute | additionalIdentifier | NEW | Additional Party Identifier | Has NEW attribute: numbering organisation code |
| Attribute | additionalIdentifier | NEW | Additional Party Identifier | Has NEW attribute: id Qualifier |
| Element(I) | additionalIdentifier | NEW | Additional Party Identifier | |
| Attribute | allowanceCharge | NEW | Allowance and Charge | Has NEW attribute: is Charge |
| Attribute | allowanceCharge | NEW | Allowance and Charge | Has NEW attribute: maximum quantity |
| Attribute | allowanceCharge | NEW | Allowance and Charge | Has NEW attribute: minimum quantity |
| Attribute | allowanceCharge | NEW | Allowance and Charge | Has NEW attribute: data currency |
| Attribute | allowanceCharge | NEW | Allowance and Charge | Has NEW attribute: unit of measure code |
| Element(I) | attachment | NEW | attachment | |
| Child | attachment | NEW | attachment | Has NEW child of: file name |
| Child | attachment | NEW | attachment | Has NEW child of: external reference |
| Child | attachment | NEW | attachment | Has NEW child of: binary object |
| Attribute | binaryObject | NEW | binary object | Has NEW attribute: encoding |

| | | | | |
|------------|-------------------|---------|--------------------|---------------------------------------------------------|
| Attrib | binaryObject | NEW | binary object | Has NEW attribute: mime |
| Attrib | binaryObject | NEW | binary object | Has NEW attribute: format |
| Attrib | binaryObject | NEW | binary object | Has NEW attribute: character set |
| Element(l) | binaryObject | NEW | binary object | |
| Child | buyer | NEW | Buyer (*) | Has NEW child of: Party identifier |
| Child | buyer | NEW | Buyer (*) | Has NEW child of: Additional Party Identifier |
| Attrib | buyer | NEW | Buyer (*) | Has NEW attribute: sender Party qualifier |
| Element(l) | characterSetCode | NEW | character set code | |
| Element(l) | characterSet | NEW | character set | |
| Element(E) | deliveryPlace | UPDATED | delivery place | Property: Length_Max Old value: 40 New value: 250 |
| Attrib | despatchDate | NEW | despatch date | Has NEW attribute: date format |
| Element(l) | despatchDate | NEW | despatch date | |
| Element(l) | despatchPlace | NEW | despatch place | |
| Element(E) | email | UPDATED | e-mail | Property: Length_Max Old value: 80 New value: 250 |
| Element(l) | encodingCode | NEW | encoding code | |
| Element(l) | encoding | NEW | encoding | |
| Child | externalReference | NEW | external reference | Has NEW child of: uri |
| Child | externalReference | NEW | external reference | Has NEW child of: format code |
| Child | externalReference | NEW | external reference | Has NEW child of: character set code |
| Child | externalReference | NEW | external reference | Has NEW child of: mime code |

| | | | | |
|------------|-------------------|---------|--------------------|------------------------------------------------------------------------------------------------------------------------------------------------------------------------------------------------------------------------|
| Child | externalReference | NEW | external reference | Has NEW child of: encoding code |
| Element(l) | externalReference | NEW | external reference | |
| Attribute | fileName | NEW | file name | Has NEW attribute: numbering organisation code |
| Element(l) | fileName | NEW | file name | |
| Element(l) | formatCode | NEW | format code | |
| Element(l) | format | NEW | format | |
| Attribute | note | UPDATED | general note | Its attribute: numbering organisation code Property: Aggregation Note_English Old value: New value: <i>must be used to specify the organization that created the list of codes used in "noteLabel"</i> |
| Element(l) | idQualifier | NEW | id Qualifier | |
| Element(l) | isCharge | NEW | is Charge | |
| Element(l) | isURL | NEW | is URL | |
| Element(E) | legalName | UPDATED | Legal name | Property: Length_Max Old value: 80 New value: 250 |
| Element(E) | itemID | UPDATED | line item number | Property: Length_Max Old value: 6 New value: 40 |
| Attribute | lineN | UPDATED | line number | Its attribute: VAT rate Property: Aggregation Note_English Old value: New value: <i>Deprecated, prefer dtScheme when available.</i> |
| Element(l) | maxQty | NEW | maximum quantity | |
| Element(l) | mimeCode | NEW | mime code | |
| Element(l) | mime | NEW | mime | |
| Element(l) | progr | NEW | progressive number | |

| | | | | |
|------------|---------------|---------|----------------------------|-----------------------------------------------------------------------------------------------------------------------------------------------------------------------------------------------------------------------------------------------------------------------------------------------------------------------|
| Child | refDoc | NEW | reference document details | Has NEW child of: attachment |
| Child | refDoc | UPDATED | reference document details | relationship with child: document identifier Property: BestPractice_English Old value: New value: <i>numberingOrg indicates the role that produced the document identifier (it is allowed to declare two different ones -e.g. customer and supplier - with two docID with different numberingOrg)</i> |
| Child | RQheader | NEW | RQ header | Has NEW child of: Third Party |
| Child | RQheader | UPDATED | RQ header | relationship with child: general note Property: Cardmax Old value: 19 New value: 99 |
| Attribute | season | NEW | season identifier | Has NEW attribute: code list reference |
| Attribute | season | NEW | season identifier | Has NEW attribute: numbering organisation code |
| Attribute | season | NEW | season identifier | Has NEW attribute: code list name |
| Attribute | season | NEW | season identifier | Has NEW attribute: code list version |
| Child | subContractor | NEW | Sub-contractor (*) | Has NEW child of: Party identifier |
| Attribute | subContractor | NEW | Sub-contractor (*) | Has NEW attribute: sender Party qualifier |
| Element(I) | subDepartment | NEW | department identifier | |
| Child | supplier | NEW | Supplier (*) | Has NEW child of: Party identifier |
| Child | supplier | NEW | Supplier (*) | Has NEW child of: Additional Party Identifier |
| Attribute | supplier | NEW | Supplier (*) | Has NEW attribute: sender Party qualifier |
| Attribute | legalRef | NEW | tax legal reference | Has NEW attribute: code list name |
| Attribute | legalRef | NEW | tax legal reference | Has NEW attribute: numbering organisation code |
| Attribute | legalRef | NEW | tax legal reference | Has NEW attribute: code list version |
| Attribute | legalRef | UPDATED | tax legal reference | Its attribute: code list reference Property: Use |

| | | | | |
|------------|----------------------------|--------|------------------------------|------------------------------------------------------------------------------------------------------------|
| | | | | Old value: <i>Required</i> New value: <i>Optional</i> |
| Child | dtScheme | UPDATE | tax scheme | relationship with child: general note Property: Cardmax Old value: 19 New value: 99 |
| Element(E) | payTermText | UPDATE | terms of payment text | Property: Length_Max Old value: 40 New value: 250 |
| Element(E) | incoTermText | UPDATE | terms of trade text | Property: Length_Max Old value: 70 New value: 250 |
| Element(E) | method | UPDATE | test method identifier | Property: Length_Max Old value: 25 New value: 80 |
| Child | thirdParty | NEW | Third Party (*) | Has NEW child of: Party identifier |
| Attribute | thirdParty | NEW | Third Party (*) | Has NEW attribute: sender Party qualifier |
| Child | terms | UPDATE | Trade conditions | relationship with child: Transport information Property: Cardmax Old value: 1 New value: 5 |
| Element(E) | transportConditionText | UPDATE | transport condition - text | Property: Length_Max Old value: 100 New value: 250 |
| Child | transportInfo | NEW | Transport information | Has NEW child of: despatch place |
| Child | transportInfo | NEW | Transport information | Has NEW child of: despatch date |
| Child | transportInfo | NEW | Transport information | Has NEW child of: effective delivery date |
| Attribute | transportInfo | NEW | Transport information | Has NEW attribute: progressive number |
| Attribute | uri | NEW | uri | Has NEW attribute: is URL |
| Element(I) | uri | NEW | uri | |
| Element(E) | yarnCharacterText | UPDATE | yarn characteristics text | Property: Length_Max Old value: 40 New value: 250 |
| Child | yarnManufacturingOperation | UPDATE | yarn manufacturing operation | relationship with child: general note Property: Cardmax |

| | | | | |
|-------|----------------------------|---------|------------------------------|------------------------------------------------------------------------------------------------------------------------------------------------------------------------------------------------------|
| | | | | Old value: 19 New value: 99 |
| Child | yarnManufacturingOperation | UPDATED | yarn manufacturing operation | relationship with child: reference document details Property: Cardmax Old value: 1 New value: 9 |
| Child | YTRQitem | UPDATED | YTRQ item | relationship with child: yarn specifications Property: Cardmax Old value: 9 New value: 99 |
| Child | YTRQitem | UPDATED | YTRQ item | relationship with child: general note Property: Cardmax Old value: 19 New value: 99 |
| Child | YTRQitem | UPDATED | YTRQ item | relationship with child: product quantity Property: BestPractice_English Old value: New value: <i>this element can have two instances only if the units of measure are different</i> |
| Child | YTRQitem | UPDATED | YTRQ item | relationship with child: Third Party Property: Cardmax Old value: 1 New value: 3 |

Annex D

New or changed tables and codes towards previous version

Changes or added items (changes in CodeListAgencyName excluded; changes in adoption notes and code description included): 83

| Test Type | Status | Table code | Table description | Code | Change description |
|-----------|--------|------------|--------------------------|-----------------------------------|---------------------------------------------------------------------------------------------------------------------------------------------------------------------|
| Table | UPDATE | NT 100 | eBIZ TCFUpstream version | | Description_English Old value: <i>eBIZ Moda-ML version</i> New value: <i>eBIZ TCFUpstream version</i> |
| Code | NEW | NT 100 | | 2018-1 (v2018-1) | |
| Code | NEW | NT 100 | | draft (draft) | |
| Table | UPDATE | NT 16 | VAT rate or code | | Generalities Old value: <i>VAT rate or code (deprecated, use dtScheme element)</i> New value: <i>VAT rate or code (DEPRECA TED, use dtScheme element)</i> |
| Code | NEW | NT 2 | | AU (Auditor) | |
| Code | NEW | NT 2 | | CE (Certification authority) | |
| Code | NEW | NT 2 | | SC (Sub contractor) | |
| Code | NEW | NT 2 | | SM (Service/ePlatform manager) | |
| Code | NEW | NT 6 | | EB (eBIZ) | |
| Code | UPDATE | NT 6 | | ML (DEPRECATED) | adoption_note Old value: New value: <i>DEPRECATED</i> |
| Code | NEW | NT 7 | | CMK (square centimetre) | |
| Code | NEW | NT 7 | | CMQ (cubic centimetre) | |
| Code | NEW | NT 7 | | E37 (pixel) | |
| Code | NEW | NT 7 | | KWH (kilowatthours) | |
| Code | NEW | NT 7 | | MMK (square millimetre) | |

| | | | | | |
|-------|---------|-----|-----------------|----------------------------------------------------|------------------------------------------------------------------------------------------------------------------------------------------------------------------------------------------------------------------------------------------|
| Code | NEW | NT7 | | <i>MTK</i> (square metre) | |
| Code | NEW | NT7 | | <i>CO2TON</i> (ton of CO2) | |
| Table | UPDATED | NT7 | unit of measure | | OtherExternalReferenceURL Old value: New value: #http://docs.oasis-open.org/ubl/os-UBL-2.1/cl/gc/default/UnitOfMeasureCode-2.1.gc# |
| Table | UPDATED | NT7 | unit of measure | | Description_English Old value: <i>unity of measure</i> New value: <i>unit of measure</i> |
| Code | NEW | T21 | | <i>BOR</i> (blanket order) | |
| Code | NEW | T21 | | <i>CEO</i> (Certificate of origin) | |
| Code | NEW | T21 | | <i>CER</i> (Certificate) | |
| Code | UPDATED | T21 | | <i>CTR</i> (Contract) | Text_English Old value: <i>contract</i> New value: <i>Contract</i> |
| Code | NEW | T21 | | <i>MCI</i> (Visual merchandising instruction) | |
| Code | NEW | T21 | | <i>VMI</i> (visual merchandising instructions) | |
| Code | NEW | T41 | | <i>1</i> (Agreed settlement) | |
| Code | NEW | T41 | | <i>2</i> (Below specification goods) | |
| Code | NEW | T41 | | <i>3</i> (Damaged goods) | |
| Code | NEW | T41 | | <i>4</i> (Short delivery) | |
| Code | NEW | T41 | | <i>7</i> (Payment on account) | |
| Code | NEW | T41 | | <i>8</i> (Returnable container charge included) | |
| Code | NEW | T41 | | <i>9</i> (Invoice error) | |
| Code | NEW | T41 | | <i>10</i> (Costs for draft) | |
| Code | NEW | T41 | | <i>11</i> (Bank charges) | |

| | | | | | |
|-------|-----|---------|--|------------------------------------------|--|
| Co de | NEW | T4 1 | | 12 (Agent commission) | |
| Co de | NEW | T4 1 | | 14 (Wrong delivery) | |
| Co de | NEW | T4 1 | | 15 (Goods returned to agent) | |
| Co de | NEW | T4 1 | | 16 (Goods partly returned) | |
| Co de | NEW | T4 1 | | 17 (Transport damage) | |
| Co de | NEW | T4 1 | | 19 (Trade discount) | |
| Co de | NEW | T4 1 | | 20 (Deduction for late delivery) | |
| Co de | NEW | T4 1 | | 21 (Advertising costs) | |
| Co de | NEW | T4 1 | | 22 (Customs duties) | |
| Co de | NEW | T4 1 | | 23 (Telephone and postal costs) | |
| Co de | NEW | T4 1 | | 24 (Repair costs) | |
| Co de | NEW | T4 1 | | 25 (Attorney fees) | |
| Co de | NEW | T4 1 | | 26 (Taxes) | |
| Co de | NEW | T4 1 | | 30 (Direct payment to seller) | |
| Co de | NEW | T4 1 | | 32 (Goods not delivered) | |
| Co de | NEW | T4 1 | | 33 (Late delivery) | |
| Co de | NEW | T4 1 | | 35 (Goods returned) | |
| Co de | NEW | T4 1 | | 36 (Invoice not received) | |
| Co de | NEW | T4 1 | | 37 (Credit note to debtor/not to us) | |
| Co de | NEW | T4 1 | | 38 (Deducted bonus) | |
| Co de | NEW | T4 1 | | 39 (Deducted discount) | |
| Co de | NEW | T4 1 | | 40 (Deducted freight costs) | |

| | | | | | |
|----------|-----|---------|--|----------------------------------------------------------------------------|--|
| Co de | NEW | T4 1 | | 41 (Deduction against other invoices) | |
| Co de | NEW | T4 1 | | 42 (Credit balance(s)) | |
| Co de | NEW | T4 1 | | 45 (Debit note to seller) | |
| Co de | NEW | T4 1 | | 46 (Discount beyond terms) | |
| Co de | NEW | T4 1 | | 48 (Allowance/charge error) | |
| Co de | NEW | T4 1 | | 49 (Substitute product) | |
| Co de | NEW | T4 1 | | 50 (Terms of sale error) | |
| Co de | NEW | T4 1 | | 52 (Wrong invoice) | |
| Co de | NEW | T4 1 | | 53 (Duplicate invoice) | |
| Co de | NEW | T4 1 | | 54 (Weight error) | |
| Co de | NEW | T4 1 | | 55 (Additional charge not authorized) | |
| Co de | NEW | T4 1 | | 56 (Incorrect discount) | |
| Co de | NEW | T4 1 | | 57 (Price change) | |
| Co de | NEW | T4 1 | | 58 (Variation) | |
| Co de | NEW | T4 1 | | 59 (Chargeback) | |
| Co de | NEW | T4 1 | | 65 (Settlement to agent) | |
| Co de | NEW | T4 1 | | 66 (Cash discount) | |
| Co de | NEW | T4 1 | | 70 (Wrong monetary amount resulting from incorrect free goods quantity) | |
| Co de | NEW | T4 1 | | 72 (Temporary special promotion) | |
| Co de | NEW | T4 1 | | 73 (Difference in tax rate) | |
| Co de | NEW | T4 1 | | 74 (Quantity discount) | |

| | | | | | |
|-------|-----------------|---------|-----------------------------|---------------------------------------|---------------------------------------------------------------------------------------------------------------------------------------------------------------------------------|
| Code | NEW | T4 1 | | 75 (Promotion discount) | |
| Code | NEW | T4 1 | | 76 (Cancellation deadline passed) | |
| Code | NEW | T4 1 | | 77 (Pricing discount) | |
| Code | NEW | T4 1 | | 78 (Volume discount) | |
| Code | NEW | T4 1 | | 79 (Sundry discount) | |
| Table | UPD ATE D | T4 1 | type of Allowance or Charge | | Generalities Old value: <i>coded specification of an Allowance or Charge</i> New value: <i>coded specification of an Allowance or Charge (elaborated from UNECE 4465)</i> |