



<http://www.ebiz-tcf.eu>

IMPLEMENTATION GUIDE

includes COMPARISON BETWEEN CURRENT and LAST
PREVIOUSLY RELEASED VERSION

TRANSACTION "FASHION DESPATCH REQUEST"

Version: v2018-1

Date of release: 18/7/2019

Document code: G043rv

technical Documentation: <http://www.ebiz.enea.it>

XML Schemas repository: <http://www.ebiz.enea.it/moda-ml/repository/schema/v2018-1/default.asp>

Guides repository: <http://www.ebiz.enea.it/moda-ml/repository/guide/v2018-1/default.asp>

Guide filename: G043rv-eBIZ-FashionDespatchRequest.pdf

1. BUSINESS DESCRIPTION

1.1 Scope

The present guide has been issued to assist the companies of the Textile-Clothing sector in the implementation of the standard XML document type "FASHION DESPATCH REQUEST", providing all the instruction required for its use in any context of e-commerce between Apparel Manufactures and their suppliers and subcontractors.

All the rules required for the construction and validation of the document are embedded into the specific XML-Schema, which is detailed in section "Implementation guide".

1.2 Generalities

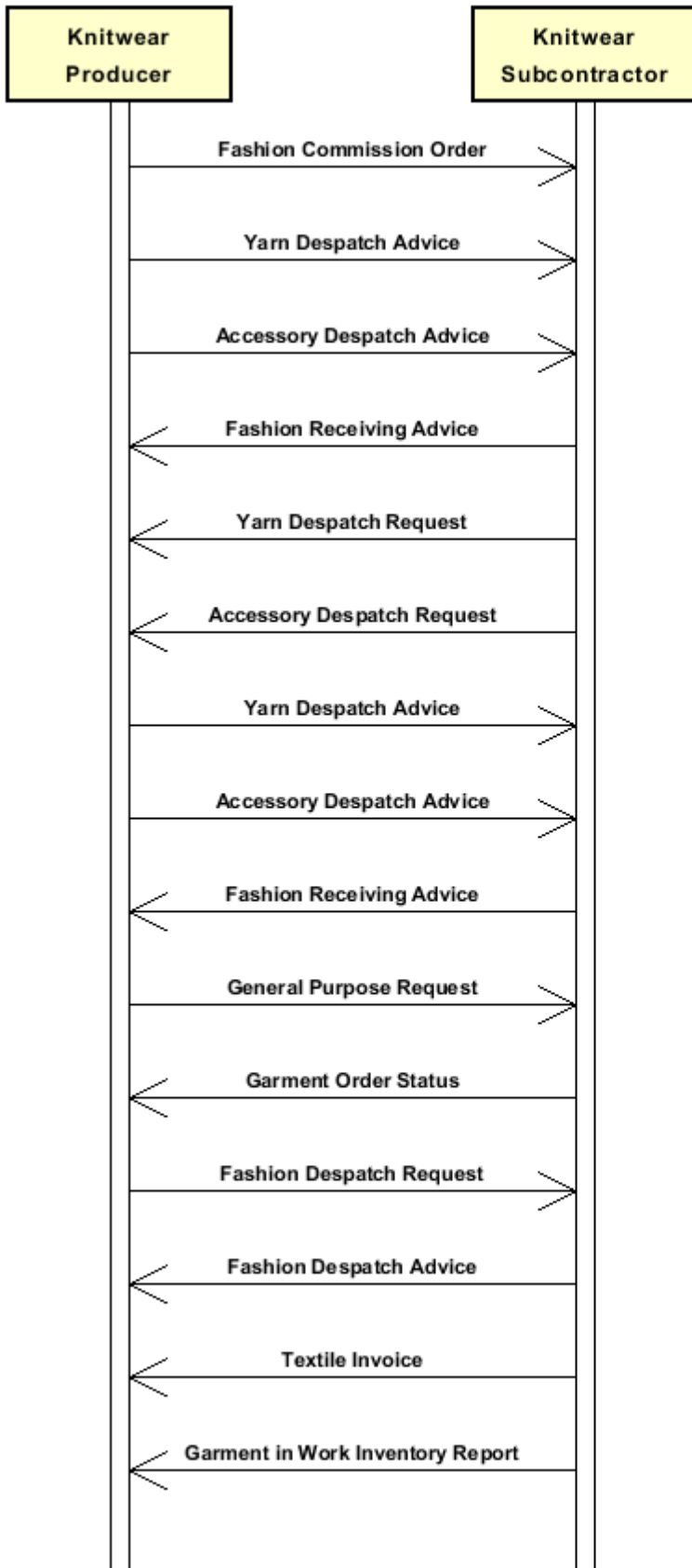
The message is issued by the Client to request/plan the delivery of the sendable articulated. The same message can be used from/ to a sub-contractor for commissioned operations.

This document can be used:

- as a standard request
- as a change notification of a previous request .

1.3. Possible scenario

Knitting and assembling



2. IMPLEMENTATION GUIDE

2.1 General structure of XML document

All the business data that can be exchanged through this class of documents are shown in the following "document structure", that provides a simplified vision of the Schema.

In particular:

- the two numbers following each element define its "cardinality" (minimum and maximum number of occurrences); the minimum equal zero indicates that the element is optional, the minimum greater than zero indicates that is mandatory;
- the bold character denotes the complex elements (aggregates of simple elements) that were built for the sake of functionality and re-usability of some complex informations sets. The child elements in each parent element are easily spotted as "indented";
- the symbol "@" denotes an attribute of the preceding element; here "the usage indicator (optional, required, ...)" is shown in square brackets.

Legenda

- N: new element
- U: updated properties
- P: changes in children
- p: is a changed child
- A: changes in attributes
- a: is a new or changed attribute
- *: is a subtype

Structure

```
GARDesRequest (P)
@TRtype [Optional] [Default= STD]
@msgfunction [Optional] [Default= OR]
@version [Optional] [Default= 2018-1]
@useProfile [Optional]
| GRheader 1-1 (P)
| | msgN 1-1
| | - choose -
| | msgID 0-1
| | - or -
| | docID 0-1
| | @numberingOrg [Optional]
| | - end choose -
| | msgDate 1-1
| | @dateForm [Optional]
| | refDoc 0-9 (P)
| | @docType [Required]
| | | docID 1-2 (p)
| | | @numberingOrg [Optional]
| | | docDate 0-1
| | | @dateForm [Optional]
| | | season 0-1 (A)
| | | @numberingOrg [Optional] (a)
| | | @codeList [Optional] (a)
| | | @listName [Optional] (a)
| | | @listVersion [Optional] (a)
| | | itemID 0-1 (U)
| | | attachment 0-1 (N)
| | | @uid [Optional]
| | | | fileName 0-1 (N)
```

```

| | | @numberingOrg [Optional] (a)
| | | binaryObject 0-1 (N)
| | | @format [Optional] (N)
| | | @mime [Optional] (N)
| | | @encoding [Optional] (N)
| | | @characterSet [Optional] (N)
| | | externalReference 0-99 (N)
| | | | uri 1-1 (N)
| | | | @isURL [Optional] [Default= true] (Na)
| | | | mimeTypeCode 0-1 (N)
| | | | formatCode 0-1 (N)
| | | | encodingCode 0-1 (N)
| | | | characterSetCode 0-1 (N)
| buyer 1-1 (AP)
| @logo [Optional]
| @sender [Optional] (a*)
| | id 1-1 (p)
| | | @numberingOrg [Optional]
| | additionalIdentifier 0-9 (N)
| | | @numberingOrg [Optional] (a)
| | | @idQualifier [Optional] (Na)
| | legalName 0-1 (U)
| | dept 0-1
| | subDept 0-1 (N)
| | person 0-1
| | | @email [Optional]
| | | @phone [Optional]
| | | @fax [Optional]
| | street 0-1
| | city 0-1
| | subCountry 0-1
| | country 0-1
| | postCode 0-1
| supplier 1-1 (AP)
| @logo [Optional]
| @sender [Optional] (a*)
| | id 1-1
| | | @numberingOrg [Optional]
| | additionalIdentifier 0-9 (N)
| | | @numberingOrg [Optional] (a)
| | | @idQualifier [Optional] (Na)
| | legalName 0-1 (U)
| | dept 0-1
| | subDept 0-1 (N)
| | person 0-1
| | | @email [Optional]
| | | @phone [Optional]
| | | @fax [Optional]
| | street 0-1
| | city 0-1
| | subCountry 0-1
| | country 0-1
| | postCode 0-1
| thirdParty 0-5 (AP)
| @VAT [Optional]
| @role [Required]
| @sender [Optional] (a*)
| | id 1-1
| | | @numberingOrg [Optional]
| | legalName 0-1 (U)
| | dept 0-1

```

- | | | subDept 0-1 (N)
- | | | person 0-1
- | | | @email [Optional]
- | | | @phone [Optional]
- | | | @fax [Optional]
- | | | street 0-1
- | | | city 0-1
- | | | subCountry 0-1
- | | | country 0-1
- | | | postCode 0-1
- | | note 0-99
- | | @numberingOrg [Optional]
- | | @codeList [Optional]
- | | @noteLabel [Optional]

trade 0-1

- choose -

- | | incoTermText 1-1 (U)

- or -

- | | incoTerm 1-1

- end choose -

- | | location 0-1
- | | @LRI [Optional]

shipInfo 0-1 (P)

- | | **transInfo 0-9 (AP)**
- | | @transReason [Optional]
- | | @progr [Optional] (N)
- | | | transMode 1-1
- | | | carrier 0-1
- | | | deliveryPlace 0-1 (U)
- | | | grossWeight 0-1
- | | | @um [Required]
- | | | netWeight 0-1
- | | | @um [Required]
- | | | transMeans 0-1
- | | | transCondition 0-3
- | | | transConditionText 0-1 (U)
- | | | despatchPlace 0-1 (N)
- | | | despatchDate 0-1 (N)
- | | | @dateForm [Optional] (a)
- | | | delEffectiveDate 0-1 (p)
- | | | @dateForm [Optional]
- | | delEffectiveDate 0-1
- | | @dateForm [Optional]
- | | **packages 0-99 (P)**
- | | @packageLevel [Optional]
- | | - choose -
- | | | packageText 1-1 (U)
- | | - or -
- | | | package 1-1
- | | - end choose -
- | | | packageModelCode 0-1 (N)
- | | | @numberingOrg [Optional] (a)
- | | | description 0-unbounded (AU)
- | | | @ln [Optional] (N)
- | | | **packageDim 0-1**
- | | | | length 1-1
- | | | | @um [Required]
- | | | | width 0-1
- | | | | @um [Required]

```

| | | | height 0-1
| | | | @um [Required]
| | | | handlingChar 0-1 (N)
- choose -
| | | | yarnPack 0-1
| | | | | yarnReel 1-1
| | | | | | @reelType [Required]
| | | | | | @reelMat [Optional]
| | | | | | | yarnReelD 0-1
| | | | | | | | @um [Required]
| | | | | | | yarnReelH 0-1
| | | | | | | | @um [Required]
| | | | | | | yarnConeAngle 0-1
| | | | | | | yarnReelQty 0-2
| | | | | | | | @um [Required]
| | | | | | | label 0-1
| | | | | | | labelWrit 0-1
| | | | | | yarnInWrap 0-1
| | | | | | | yarnReelWrap 1-1
| | | | | | | label 0-1
| | | | | | | labelWrit 0-1
- choose -
| | | | | yarnOutWrapText 0-1 (U)
- or -
| | | | | yarnOutWrap 0-1
- end choose -
- or -
| | | | | piecePack 0-1
- choose -
| | | | | | piecePackText 1-1 (U)
- or -
| | | | | | | pieceInnWrap1 1-1
| | | | | | | pieceInnWrap2 0-1
| | | | | | | pieceOutWrap 0-1
- end choose -
- or -
| | | | | acsPack 0-1 (U)
- choose -
| | | | | | acsPackCode 1-1 (AU)
| | | | | | | @numberingOrg [Optional] (a)
| | | | | | | @codeList [Optional] (a)
| | | | | | | @listName [Optional] (a)
| | | | | | | @listVersion [Optional] (a)
- or -
| | | | | | acsPackText 1-1 (U)
- end choose -
- or -
| | | | | garPack 0-1 (N)
- choose -
| | | | | | garPackCode 1-1 (N)
| | | | | | | @numberingOrg [Optional] (a)
| | | | | | | @codeList [Optional] (a)
| | | | | | | @listName [Optional] (a)
| | | | | | | @listVersion [Optional] (a)
- or -
| | | | | | garPackText 1-1 (N)
- end choose -
- end choose -
| | | | | sortableIndicator 0-1 (N)
| | | | | stackabilityLevel 0-1 (N)
| | | | | handlingType 0-1 (N)

```

```

| | | @In [Optional] (N)
| | | volume 0-1 (p)
| | | @um [Required]
| | | netWeight 0-1 (p)
| | | @um [Required]
| | | grossWeight 0-1
| | | @um [Required]
| | | note 0-99
| | | @numberingOrg [Optional]
| | | @codeList [Optional]
| | | @noteLabel [Optional]
| | itemsPerPackage 0-1 (N)
| | @um [Required] (a)
| | minItemsPerPackage 0-1 (N)
| | @um [Required] (a)
| | fillingCriterion 0-9 (N)
| | @progr [Optional] (Na)
| | packageQty 0-1
| | packageN 0-unbounded (U)
| | @numberingOrg [Optional]
| | @packageContainerN [Optional]
| | EPCList 0-1
| | | EPC 1-unbounded
| | | @numberingOrg [Optional]
| | | @TID [Optional]
| | actualPackageUnit 0-unbounded (N)
| | | @packageLevel [Optional] (a)
| | | packageIdentification 1-1 (N)
| | | | packageN 1-1 (U)
| | | | @numberingOrg [Optional]
| | | | @packageContainerN [Optional]
| | | | serialN 0-9 (AU)
| | | | @numberingOrg [Optional]
| | | | @idQualifier [Optional] (N)
| | - choose -
| | | packageText 0-1 (U)
| | - or -
| | | package 0-1 (p)
| | - end choose -
| | | packageModelCode 0-1 (N)
| | | @numberingOrg [Optional]
| | | volume 0-1
| | | @um [Required]
| | | netWeight 0-1
| | | @um [Required]
| | | grossWeight 0-1
| | | @um [Required]
| | | packageDim 0-1 (p)
| | | | length 1-1
| | | | @um [Required]
| | | | width 0-1
| | | | @um [Required]
| | | | height 0-1
| | | | @um [Required]
| | | actualItemsPerPackage 0-1 (N)
| | | packagesList 0-1 (N)
| | | | packageIdentification 1-unbounded (N)
| | | | | packageN 1-1 (U)
| | | | | @numberingOrg [Optional]
| | | | | @packageContainerN [Optional]
| | | | | serialN 0-9 (AU)

```


- | | | | @numberingOrg [Optional]
- | | | | @idQualifier [Optional] (N)
- | | **itemsList 0-1** (N)
- | | | qualityLevel 0-1 (N)
- | | | | @numberingOrg [Optional] (a)
- | | | | @codeList [Optional] (a)
- | | | | @listName [Optional] (a)
- | | | | @listVersion [Optional] (a)
- | | | **itemIdentification 1-unbounded** (N)
- | | | | serialN 1-9 (AU)
- | | | | | @numberingOrg [Optional]
- | | | | | @idQualifier [Optional] (N)
- | | note 0-99
- | | | @numberingOrg [Optional]
- | | | @codeList [Optional]
- | | | @noteLabel [Optional]

GRbody 1-1

- | | **GRitem 1-unbounded** (P)
- | | | lineN 1-1
- | | | | @VAT [Optional]
- | | | lineID 0-1 (N)
- | | | **refDoc 0-9** (P)
- | | | | @docType [Required]
- | | | | | docID 1-2 (p)
- | | | | | | @numberingOrg [Optional]
- | | | | | docDate 0-1
- | | | | | | @dateForm [Optional]
- | | | | | season 0-1 (A)
- | | | | | | @numberingOrg [Optional] (a)
- | | | | | | @codeList [Optional] (a)
- | | | | | | @listName [Optional] (a)
- | | | | | | @listVersion [Optional] (a)
- | | | | itemID 0-1 (U)
- | | | | **attachment 0-1** (N)
- | | | | | @uid [Optional]
- | | | | | | fileName 0-1 (N)
- | | | | | | | @numberingOrg [Optional]
- | | | | | | binaryObject 0-1 (N)
- | | | | | | | @format [Optional] (N)
- | | | | | | | @mime [Optional] (N)
- | | | | | | | @encoding [Optional] (N)
- | | | | | | | @characterSet [Optional] (N)
- | | | | | | **externalReference 0-99** (N)
- | | | | | | | uri 1-1 (N)
- | | | | | | | | @isURL [Optional] [Default= true] (Na)
- | | | | | | | | mimeTypeCode 0-1 (N)
- | | | | | | | | formatCode 0-1 (N)
- | | | | | | | | encodingCode 0-1 (N)
- | | | | | | | | characterSetCode 0-1 (N)
- | | | | additionalComponentCode 0-9 (N)
- | | | | | @numberingOrg [Optional] (a)
- | | | | | @codeList [Optional] (a)
- | | | | | @listName [Optional] (a)
- | | | | | @listVersion [Optional] (a)
- | | - choose -
- | | | **yarnCode 1-2** (P)
- | | | | @numberingOrg [Optional] [Default= CL]
- | | | | | art 1-1 (U)
- | | | | | | @numberingOrg [Optional]
- | | | | | | @codeList [Optional]

| | | @listName [Optional]
 | | | @listVersion [Optional]
 | | | color 0-1
 | | | @numberingOrg [Optional]
 | | | @codeList [Optional]
 | | | @listName [Optional]
 | | | @listVersion [Optional]
 | | | added 0-9
 | | | @numberingOrg [Optional]
 | | | @addType [Optional]
 | | | description 0-unbounded (AU)
 | | | @In [Optional] (N)

- or -

| | | **texCode 1-2** (P)
 | | | @numberingOrg [Optional]
 | | | art 1-1 (U)
 | | | @numberingOrg [Optional]
 | | | @codeList [Optional]
 | | | @listName [Optional]
 | | | @listVersion [Optional]
 | | | pattern 0-1
 | | | @numberingOrg [Optional]
 | | | @codeList [Optional]
 | | | @listName [Optional]
 | | | @listVersion [Optional]
 | | | color 0-1
 | | | @numberingOrg [Optional]
 | | | @codeList [Optional]
 | | | @listName [Optional]
 | | | @listVersion [Optional]
 | | | added 0-9
 | | | @numberingOrg [Optional]
 | | | @addType [Optional]
 | | | description 0-unbounded (pAU)
 | | | @In [Optional] (N)

- or -

| | | **acsCode 1-2** (U)
 | | | @numberingOrg [Optional]
 | | | art 1-1 (U)
 | | | @numberingOrg [Optional]
 | | | @codeList [Optional]
 | | | @listName [Optional]
 | | | @listVersion [Optional]
 | | | pattern 0-1
 | | | @numberingOrg [Optional]
 | | | @codeList [Optional]
 | | | @listName [Optional]
 | | | @listVersion [Optional]
 | | | color 0-1
 | | | @numberingOrg [Optional]
 | | | @codeList [Optional]
 | | | @listName [Optional]
 | | | @listVersion [Optional]
 | | | added 0-9
 | | | @numberingOrg [Optional]
 | | | @addType [Optional]
 | | | description 0-unbounded (AU)
 | | | @In [Optional] (N)

- or -

| | | **garmentPartCode 1-2** (P)
 | | | @numberingOrg [Optional]

```

| | | gPart 1-1
| | | mod 1-1
| | | @numberingOrg [Optional]
| | | @codeList [Optional]
| | | @listName [Optional]
| | | @listVersion [Optional]
| | | fabric 0-1
| | | @numberingOrg [Optional]
| | | @codeList [Optional]
| | | @listName [Optional]
| | | @listVersion [Optional]
| | | color 0-1
| | | @numberingOrg [Optional]
| | | @codeList [Optional]
| | | @listName [Optional]
| | | @listVersion [Optional]
| | | added 0-19
| | | @numberingOrg [Optional]
| | | @addType [Optional]
| | | size 0-1 (A)
| | | @numberingOrg [Optional] (a)
| | | @codeList [Optional]
| | | @listName [Optional] (a)
| | | @listVersion [Optional] (a)
| | | description 0-unbounded (AU)
| | | @ln [Optional] (N)

```

- or -

```

| | | garmentCode 1-2
| | | @numberingOrg [Optional]

```

- choose -

```

| | | garmentCodeB 1-1 (P)
| | | @numberingOrg [Optional]
| | | | mod 1-1
| | | | @numberingOrg [Optional]
| | | | @codeList [Optional]
| | | | @listName [Optional]
| | | | @listVersion [Optional]
| | | | fabric 0-1
| | | | @numberingOrg [Optional]
| | | | @codeList [Optional]
| | | | @listName [Optional]
| | | | @listVersion [Optional]
| | | | color 0-1
| | | | @numberingOrg [Optional]
| | | | @codeList [Optional]
| | | | @listName [Optional]
| | | | @listVersion [Optional]
| | | | garmentVariant 0-9 (N)
| | | | | variantType 1-1 (N)
| | | | | @numberingOrg [Optional] (a)
| | | | | @codeList [Optional] (a)
| | | | | @listName [Optional] (a)
| | | | | @listVersion [Optional] (a)
| | | | | variantCode 1-1 (N)
| | | | | @numberingOrg [Optional] (a)
| | | | | @codeList [Optional] (a)
| | | | | @listName [Optional] (a)
| | | | | @listVersion [Optional] (a)
| | | | drop 0-1 (A)
| | | | @numberingOrg [Optional] (a)
| | | | @codeList [Optional]

```

```

| | | | @listName [Optional] (a)
| | | | @listVersion [Optional] (a)
| | | | size 0-1 (A)
| | | | @numberingOrg [Optional] (a)
| | | | @codeList [Optional]
| | | | @listName [Optional] (a)
| | | | @listVersion [Optional] (a)
| | | | artGroup 0-1
| | | | @numberingOrg [Optional]
| | | | @codeList [Optional]
| | | | @listName [Optional]
| | | | @listVersion [Optional]
| | | | added 0-9
| | | | @numberingOrg [Optional]
| | | | @addType [Optional]
| | | | description 0-unbounded (AU)
| | | | @ln [Optional] (N)

```

- or -

```

| | | | garmentCodeA 1-1 (P)
| | | | | art 1-1 (U)
| | | | | @numberingOrg [Optional]
| | | | | @codeList [Optional]
| | | | | @listName [Optional]
| | | | | @listVersion [Optional]
| | | | | description 0-unbounded (AU)
| | | | | @ln [Optional] (N)

```

- end choose -

- end choose -

```

| | | | phaseCode 0-1 (N)
| | | | @numberingOrg [Optional] (a)
| | | | @codeList [Optional] (a)
| | | | @listName [Optional] (a)
| | | | @listVersion [Optional] (a)
| | | | qty 1-1
| | | | @um [Required]
| | | | csRange 0-99 (P)
| | | | | @numberingOrg [Optional]
| | | | | @sizeSystemNat [Optional]
| | | | | @sizeSystemSeg [Optional]
| | | | | @sizeSystemBase [Optional]
| | | | | @sizeSystemID [Optional]
| | | | | color 0-1
| | | | | | @numberingOrg [Optional]
| | | | | | @codeList [Optional]
| | | | | | @listName [Optional]
| | | | | | @listVersion [Optional]
| | | | | garmentVariant 0-9 (N)
| | | | | | variantType 1-1 (N)
| | | | | | | @numberingOrg [Optional]
| | | | | | | @codeList [Optional]
| | | | | | | @listName [Optional]
| | | | | | | @listVersion [Optional]
| | | | | | variantCode 1-1 (N)
| | | | | | | @numberingOrg [Optional]
| | | | | | | @codeList [Optional]
| | | | | | | @listName [Optional]
| | | | | | | @listVersion [Optional]
| | | | | drop 0-1 (Ap)
| | | | | @numberingOrg [Optional] (a)
| | | | | @codeList [Optional]
| | | | | @listName [Optional] (a)

```

```

| | | | @listVersion [Optional] (a)
| | | | sizeMatrix 1-1
| | | | | sizeRow 1-99 (P)
| | | | | | additionalComponentCode 0-9 (N)
| | | | | | @numberingOrg [Optional] (a)
| | | | | | @codeList [Optional] (a)
| | | | | | @listName [Optional] (a)
| | | | | | @listVersion [Optional] (a)
| | | | | | drop 0-1 (A)
| | | | | | @numberingOrg [Optional] (a)
| | | | | | @codeList [Optional]
| | | | | | @listName [Optional] (a)
| | | | | | @listVersion [Optional] (a)
| | | | | | size 1-1 (A)
| | | | | | @numberingOrg [Optional] (a)
| | | | | | @codeList [Optional]
| | | | | | @listName [Optional] (a)
| | | | | | @listVersion [Optional] (a)
| | | | | | qty 0-1
| | | | | | @um [Required]
| | | | | | itemsList 0-1 (N)
| | | | | | | qualityLevel 0-1 (N)
| | | | | | | @numberingOrg [Optional] (a)
| | | | | | | @codeList [Optional] (a)
| | | | | | | @listName [Optional] (a)
| | | | | | | @listVersion [Optional] (a)
| | | | | | | itemIdentification 1-unbounded (N)
| | | | | | | | serialN 1-9 (AU)
| | | | | | | | @numberingOrg [Optional]
| | | | | | | | @idQualifier [Optional] (N)
| | | | | lotN 0-2
| | | | | @numberingOrg [Optional]
| | | | | thirdParty 0-3 (AP)
| | | | | @VAT [Optional]
| | | | | @role [Required]
| | | | | @sender [Optional] (a*)
| | | | | | id 1-1
| | | | | | | @numberingOrg [Optional]
| | | | | | | legalName 0-1 (U)
| | | | | | | dept 0-1
| | | | | | | subDept 0-1 (N)
| | | | | | | person 0-1
| | | | | | | | @email [Optional]
| | | | | | | | @phone [Optional]
| | | | | | | | @fax [Optional]
| | | | | | | street 0-1
| | | | | | | city 0-1
| | | | | | | subCountry 0-1
| | | | | | | country 0-1
| | | | | | | postCode 0-1
| | | | | shipInfo 0-1 (P)
| | | | | | transInfo 0-9 (AP)
| | | | | | | @transReason [Optional]
| | | | | | | @progr [Optional] (N)
| | | | | | | | transMode 1-1
| | | | | | | | carrier 0-1
| | | | | | | | deliveryPlace 0-1 (U)
| | | | | | | | grossWeight 0-1
| | | | | | | | @um [Required]
| | | | | | | | netWeight 0-1
| | | | | | | | @um [Required]

```

```

| | | | | transMeans 0-1
| | | | | transCondition 0-3
| | | | | transConditionText 0-1 (U)
| | | | | despatchPlace 0-1 (N)
| | | | | despatchDate 0-1 (N)
| | | | | @dateForm [Optional]
| | | | | delEffectiveDate 0-1 (p)
| | | | | @dateForm [Optional]
delEffectiveDate 0-1
@dateForm [Optional]
| | | | | packages 0-99 (P)
| | | | | @packageLevel [Optional]
- choose -
| | | | | | packageText 1-1 (U)
- or -
| | | | | | package 1-1
- end choose -
| | | | | | packageModelCode 0-1 (N)
| | | | | | @numberingOrg [Optional]
| | | | | | description 0-unbounded (AU)
| | | | | | @ln [Optional] (N)
| | | | | | packageDim 0-1
| | | | | | | length 1-1
| | | | | | | @um [Required]
| | | | | | | width 0-1
| | | | | | | @um [Required]
| | | | | | | height 0-1
| | | | | | | @um [Required]
| | | | | | handlingChar 0-1 (N)
- choose -
| | | | | | | yarnPack 0-1
| | | | | | | | yarnReel 1-1
| | | | | | | | @reelType [Required]
| | | | | | | | @reelMat [Optional]
| | | | | | | | | yarnReelD 0-1
| | | | | | | | | @um [Required]
| | | | | | | | | yarnReelH 0-1
| | | | | | | | | @um [Required]
| | | | | | | | | yarnConeAngle 0-1
| | | | | | | | | yarnReelQty 0-2
| | | | | | | | | @um [Required]
| | | | | | | | | label 0-1
| | | | | | | | | labelWrit 0-1
| | | | | | | | | yarnInWrap 0-1
| | | | | | | | | | yarnReelWrap 1-1
| | | | | | | | | | label 0-1
| | | | | | | | | | labelWrit 0-1
- choose -
| | | | | | | | | yarnOutWrapText 0-1 (U)
- or -
| | | | | | | | | yarnOutWrap 0-1
- end choose -
- or -
| | | | | | | | | piecePack 0-1
- choose -
| | | | | | | | | | piecePackText 1-1 (U)
- or -
| | | | | | | | | | pieceInnWrap1 1-1
| | | | | | | | | | pieceInnWrap2 0-1
| | | | | | | | | | pieceOutWrap 0-1
- end choose -

```

```

- or -
| | | | | | acsPack 0-1 (U)
- choose -
| | | | | | acsPackCode 1-1 (AU)
| | | | | | @numberingOrg [Optional] (a)
| | | | | | @codeList [Optional] (a)
| | | | | | @listName [Optional] (a)
| | | | | | @listVersion [Optional] (a)
- or -
| | | | | | acsPackText 1-1 (U)
- end choose -
- or -
| | | | | | garPack 0-1 (N)
- choose -
| | | | | | garPackCode 1-1 (N)
| | | | | | @numberingOrg [Optional] (a)
| | | | | | @codeList [Optional] (a)
| | | | | | @listName [Optional] (a)
| | | | | | @listVersion [Optional] (a)
- or -
| | | | | | garPackText 1-1 (N)
- end choose -
- end choose -
| | | | | | sortableIndicator 0-1 (N)
| | | | | | stackabilityLevel 0-1 (N)
| | | | | | handlingType 0-1 (N)
| | | | | | @ln [Optional] (Na)
| | | | | | volume 0-1
| | | | | | @um [Required]
| | | | | | netWeight 0-1
| | | | | | @um [Required]
| | | | | | grossWeight 0-1
| | | | | | @um [Required]
| | | | | | note 0-99
| | | | | | @numberingOrg [Optional]
| | | | | | @codeList [Optional]
| | | | | | @noteLabel [Optional]
| | | | | | itemsPerPackage 0-1 (N)
| | | | | | @um [Required]
| | | | | | minItemsPerPackage 0-1 (N)
| | | | | | @um [Required]
| | | | | | fillingCriterion 0-9 (N)
| | | | | | @progr [Optional] (N)
| | | | | | packageQty 0-1
| | | | | | packageN 0-unbounded (U)
| | | | | | @numberingOrg [Optional]
| | | | | | @packageContainerN [Optional]
| | | | | | EPCList 0-1
| | | | | | EPC 1-unbounded
| | | | | | @numberingOrg [Optional]
| | | | | | @TID [Optional]
| | | | | | actualPackageUnit 0-unbounded (N)
| | | | | | @packageLevel [Optional] (a)
| | | | | | packageIdentification 1-1 (N)
| | | | | | packageN 1-1 (U)
| | | | | | @numberingOrg [Optional]
| | | | | | @packageContainerN [Optional]
| | | | | | serialN 0-9 (AU)
| | | | | | @numberingOrg [Optional]
| | | | | | @idQualifier [Optional] (N)
- choose -

```

```

| | | | packageText 0-1 (U)
| | | | - or -
| | | | | package 0-1 (p)
| | | | | - end choose -
| | | | | packageModelCode 0-1 (N)
| | | | | | @numberingOrg [Optional] (a)
| | | | | volume 0-1
| | | | | | @um [Required]
| | | | | netWeight 0-1
| | | | | | @um [Required]
| | | | | grossWeight 0-1
| | | | | | @um [Required]
| | | | | packageDim 0-1 (p)
| | | | | | length 1-1
| | | | | | | @um [Required]
| | | | | | width 0-1
| | | | | | | @um [Required]
| | | | | | height 0-1
| | | | | | | @um [Required]
| | | | | actualItemsPerPackage 0-1 (N)
| | | | | packagesList 0-1 (N)
| | | | | | packageIdentification 1-unbounded (N)
| | | | | | | packageN 1-1 (U)
| | | | | | | | @numberingOrg [Optional]
| | | | | | | | @packageContainerN [Optional]
| | | | | | | serialN 0-9 (AU)
| | | | | | | | @numberingOrg [Optional]
| | | | | | | | @idQualifier [Optional] (N)
| | | | | | itemsList 0-1 (N)
| | | | | | | qualityLevel 0-1 (N)
| | | | | | | | @numberingOrg [Optional] (a)
| | | | | | | | @codeList [Optional] (a)
| | | | | | | | @listName [Optional] (a)
| | | | | | | | @listVersion [Optional] (a)
| | | | | | | itemIdentification 1-unbounded (N)
| | | | | | | | serialN 1-9 (AU)
| | | | | | | | | @numberingOrg [Optional]
| | | | | | | | | @idQualifier [Optional] (N)
| | | | | note 0-99
| | | | | | @numberingOrg [Optional]
| | | | | | @codeList [Optional]
| | | | | | @noteLabel [Optional]
| | | | itemsList 0-1 (N)
| | | | | qualityLevel 0-1 (N)
| | | | | | @numberingOrg [Optional] (a)
| | | | | | @codeList [Optional] (a)
| | | | | | @listName [Optional] (a)
| | | | | | @listVersion [Optional] (a)
| | | | | itemIdentification 1-unbounded (N)
| | | | | | serialN 1-9 (AU)
| | | | | | | @numberingOrg [Optional]
| | | | | | | @idQualifier [Optional] (N)
| | | | packageN 0-unbounded (U)
| | | | | @numberingOrg [Optional]
| | | | | @packageContainerN [Optional]
| | | | note 0-99
| | | | | @numberingOrg [Optional]
| | | | | @codeList [Optional]
| | | | | @noteLabel [Optional]

```


2.2 Detailed description of document elements

Following tables show all elements (complex and simple) used in this document. Description includes: 1) element's information: xml tag, name, brief description, data type and syntax constraints; 2) information about use of the element in a particular position in the document: xpath and possible associated notes.

2.2.1 Complex elements (Aggregate Business Information Entities)

Complex elements are those elements whose content is composed of other elements (childs). Complex elements are alphabetically ordered.

acsCode	full codification identifying an accessory product usually coupled with garment or other fashion product (XPath GARDesRequest/GRbody/GRitem/acsCode) 1-2 (U) - note: <i>this element can have two instances only if the numbering organisations are different</i>
acsPack	type of wrapping or packing of the accessory (XPath GARDesRequest/shipInfo/packages/handlingChar/acsPack) 0-1 (U) (XPath GARDesRequest/GRbody/GRitem/shipInfo/packages/handlingChar/acsPack) 0-1 (U)
actualPackageUnit	description and identification of a single transport package (XPath GARDesRequest/shipInfo/actualPackageUnit) 0-unbounded (N) - note: <i>this element might be repeated for listing each single package of the shipment</i> (XPath GARDesRequest/GRbody/GRitem/shipInfo/actualPackageUnit) 0-unbounded (N) - note: <i>this element might be repeated for listing each single package of the shipment</i>
attachment	an attached document. An attachment can refer to an external document or be included with the document being exchanged (XPath GARDesRequest/GRheader/refDoc/attachment) 0-1 (N) (XPath GARDesRequest/GRbody/GRitem/refDoc/attachment) 0-1 (N)
buyer	details of the Buyer (party that buys the good or service that is object of the current collaborative process) - base type: Nad, (XPath GARDesRequest/GRheader/buyer) 1-1 (AP)
csRange	range of color-size for a fashion article (XPath GARDesRequest/GRbody/GRitem/csRange) 0-99 (P)
EPCList	list of identifiers used for tracing a physical item with RFID technology (XPath GARDesRequest/shipInfo/packages/EPCList) 0-1 - note: <i>this element is DEPRECATED, please use the specific elements</i> (XPath GARDesRequest/GRbody/GRitem/shipInfo/packages/EPCList) 0-1 - note: <i>this element is DEPRECATED, please use the specific elements</i>
externalReference	details about an external object, such as a document stored at a remote location (XPath GARDesRequest/GRbody/GRitem/refDoc/attachment/externalReference) 0-99 (N) (XPath GARDesRequest/GRheader/refDoc/attachment/externalReference) 0-99 (N)
garmentCode	codification of the garment product (XPath GARDesRequest/GRbody/GRitem/garmentCode) 1-2 - note: <i>this element can have two instances only if the numbering organisations are different</i>
garmentCodeA	codification of the garment product- type A (XPath GARDesRequest/GRbody/GRitem/garmentCode/garmentCodeA) 1-1 (P)

	- note: <i>here the barcode EAN-13 or EAN-8 should be specified</i>
garmentCodeB	codification of the garment product - type B (XPath GARDesRequest/GRbody/GRitem/garmentCode/garmentCodeB) 1-1 (P)
garmentPartCode	codification of the component or part of a fashion article (XPath GARDesRequest/GRbody/GRitem/garmentPartCode) 1-2 (P) - note: <i>this element can have two instances only if the numbering organisations are different</i>
garmentVariant	garment product variant (XPath GARDesRequest/GRbody/GRitem/csRange/garmentVariant) 0-9 (N) - note: <i>used only if not already specified in the article code</i> (XPath GARDesRequest/GRbody/GRitem/garmentCode/garmentCodeB/garmentVariant) 0-9 (N)
garPack	the packaging mode of the item or a part of it. (XPath GARDesRequest/shipInfo/packages/handlingChar/garPack) 0-1 (N) (XPath GARDesRequest/GRbody/GRitem/shipInfo/packages/handlingChar/garPack) 0-1 (N)
GRbody	body of the "FASHION Despatch Request" (XPath GARDesRequest/GRbody) 1-1
GRheader	header of the "FASHION Despatch Request" (XPath GARDesRequest/GRheader) 1-1 (P)
GRitem	line of the "FASHION Despatch Request" (XPath GARDesRequest/GRbody/GRitem) 1-unbounded (P)
handlingChar	features of an item (item or package) useful for its transport and warehouse management. (XPath GARDesRequest/shipInfo/packages/handlingChar) 0-1 (N) - note: <i>in this case the characteristics are related to the package.</i> (XPath GARDesRequest/GRbody/GRitem/shipInfo/packages/handlingChar) 0-1 (N) - note: <i>in this case the characteristics are related to the package.</i>
itemIdentification	serial identification of a product unit (XPath GARDesRequest/GRbody/GRitem/itemsList/itemIdentification) 1-unbounded (N) - note: <i>identification of the single product unit contained in the list</i> (XPath GARDesRequest/shipInfo/actualPackageUnit/itemsList/itemIdentification) 1-unbounded (N) - note: <i>identification of the single product unit contained in the list</i> (XPath GARDesRequest/GRbody/GRitem/csRange/sizeMatrix/sizeRow/itemsList/itemIdentification) 1-unbounded (N) - note: <i>identification of the single product unit contained in the list</i> (XPath GARDesRequest/GRbody/GRitem/shipInfo/actualPackageUnit/itemsList/itemIdentification) 1-unbounded (N) - note: <i>identification of the single product unit contained in the list</i>
itemsList	list of the single product units (XPath GARDesRequest/GRbody/GRitem/csRange/sizeMatrix/sizeRow/itemsList) 0-1 (N) - note: <i>the usage in this position is alternative to its usage within the document line element</i> (XPath GARDesRequest/shipInfo/actualPackageUnit/itemsList) 0-1 (N) (XPath GARDesRequest/GRbody/GRitem/shipInfo/actualPackageUnit/itemsList) 0-1 (N) (XPath GARDesRequest/GRbody/GRitem/itemsList) 0-1 (N) - note: <i>the usage in this position is alternative to its usage within sizeRow.</i>
packageDim	dimensions of a transport package (XPath GARDesRequest/shipInfo/packages/packageDim) 0-1

	<p>(XPath GARDesRequest/GRbody/GRitem/shipInfo/actualPackageUnit/packageDim) 0-1 (p) (XPath GARDesRequest/shipInfo/actualPackageUnit/packageDim) 0-1 (p) (XPath GARDesRequest/GRbody/GRitem/shipInfo/packages/packageDim) 0-1</p>
packageldentification	<p>serial identification of a package (XPath GARDesRequest/shipInfo/actualPackageUnit/ packagesList/packageldentification) 1-unbounded (N) - note: <i>identification of the single package contained in the list</i> (XPath GARDesRequest/shipInfo/actualPackageUnit/packageldentification) 1-1 (N) (XPath GARDesRequest/GRbody/GRitem/shipInfo/actualPackageUnit/packagesList/ packageldentification) 1-unbounded (N) - note: <i>identification of the single package contained in the list</i> (XPath GARDesRequest/GRbody/GRitem/shipInfo/actualPackageUnit/packageldent ification) 1-1 (N)</p>
packages	<p>describes the composition of the transport packaging. Each element correspond s to a type of package: type, quantity, hierarchic level, list of identifiers of the single packages (XPath GARDesRequest/GRbody/GRitem/shipInfo/packages) 0-99 (P) - note: <i>this element must be iterated for each type of package</i> (XPath GARDesRequest/shipInfo/packages) 0-99 (P) - note: <i>this element must be iterated for each type of package</i></p>
packagesList	<p>list of single packages (XPath GARDesRequest/GRbody/GRitem/shipInfo/actualPackageUnit/packagesList) 0-1 (N) - note: <i>list of packages contained within the actual package (thus with lower level). All the packages in the list should preferably have the same level.</i> (XPath GARDesRequest/shipInfo/actualPackageUnit/packagesList) 0-1 (N) - note: <i>list of packages contained within the actual package (thus with lower level). All the packages in the list should preferably have the same level.</i></p>
piecePack	<p>type of wrapping or packing of the fabric pieces (XPath GARDesRequest/GRbody/GRitem/shipInfo/packages/ handlingChar/piecePack) 0-1 (XPath GARDesRequest/shipInfo/packages/handlingChar/piecePack) 0-1</p>
refDoc	<p>identification of a document and of an item thereof, to which the message m akes reference (XPath GARDesRequest/GRbody/GRitem/refDoc) 0-9 (P) (XPath GARDesRequest/GRheader/refDoc) 0-9 (P)</p>
shipInfo	<p>miscellaneous information on transport and transport packages, referred eit her to the whole document or to the single item (XPath GARDesRequest/shipInfo) 0-1 (P) (XPath GARDesRequest/GRbody/GRitem/shipInfo) 0-1 (P)</p>
sizeMatrix	<p>size matrix of an apparel product (XPath GARDesRequest/GRbody/GRitem/csRange/sizeMatrix) 1-1</p>
sizeRow	<p>size matrix row of an apparel product (XPath GARDesRequest/GRbody/GRitem/csRange/sizeMatrix/sizeRow) 1-99 (P)</p>
supplier	<p>details of the Supplier (party that supplies the good or service that is object of the current collaborative process) - base type: Nad, (XPath GARDesRequest/GRheader/supplier) 1-1 (AP)</p>
texCode	<p>full codification of the textile product (XPath GARDesRequest/GRbody/GRitem/texCode) 1-2 (P) - note: <i>this element can have two instances only if the numbering organisati ons are different</i></p>

thirdParty	<p>details of the Third Party, different from Sender and Receiver of the document</p> <p>- base type: Nad, (XPath GARDesRequest/GRbody/GRitem/thirdParty) 0-3 (AP) (XPath GARDesRequest/GRheader/thirdParty) 0-5 (AP)</p>
trade	<p>general terms of trade for the specified supply</p> <p>(XPath GARDesRequest/trade) 0-1</p> <p>- note: <i>The general terms of trade to be send to the delivery party</i></p>
transInfo	<p>details of transport: mode, carrier and delivery place</p> <p>(XPath GARDesRequest/GRbody/GRitem/shipInfo/transInfo) 0-9 (AP)</p> <p>- note: <i>this data group can be iterated for each transport leg. They have to be in ordered sequence from initial place up to the final delivery place.</i></p> <p>(XPath GARDesRequest/shipInfo/transInfo) 0-9 (AP)</p> <p>- note: <i>this data group can be iterated for each transport leg. They have to be in ordered sequence from initial place up to the final delivery place.</i></p>
yarnCode	<p>full codification of a yarn product</p> <p>(XPath GARDesRequest/GRbody/GRitem/yarnCode) 1-2 (P)</p> <p>- note: <i>this element can have two instances only if the numbering organisations are different</i></p>
yarnInWrap	<p>details specifying the inner wrapping of a yarn product</p> <p>(XPath GARDesRequest/GRbody/GRitem/shipInfo/packages/handlingChar/yarnPack/yarnInWrap) 0-1</p> <p>(XPath GARDesRequest/shipInfo/packages/handlingChar/yarnPack/yarnInWrap) 0-1</p>
yarnPack	<p>details of type of presentation used for the yarn</p> <p>(XPath GARDesRequest/GRbody/GRitem/shipInfo/packages/handlingChar/yarnPack) 0-1</p> <p>(XPath GARDesRequest/shipInfo/packages/handlingChar/yarnPack) 0-1</p>
yarnReel	<p>details of the packaging of a yarn product (bobbin and reel,..)</p> <p>(XPath GARDesRequest/GRbody/GRitem/shipInfo/packages/handlingChar/yarnPack/yarnReel) 1-1</p> <p>(XPath GARDesRequest/shipInfo/packages/handlingChar/yarnPack/yarnReel) 1-1</p>

2.2.2 Simple elements (Basic Business Information Entities)

Simple elements are those elements whose content is characterized by a data type plus a domain of possible values. Simple elements are alphabetically ordered.

acsPackCode	<p>code specifying the type of wrapping or packing used for the accessory</p> <p>- base type: string, (XPath GARDesRequest/GRbody/GRitem/shipInfo/packages/handlingChar/acsPack/acsPackCode) 1-1 (AU) (XPath GARDesRequest/shipInfo/packages/handlingChar/acsPack/acsPackCode) 1-1 (AU)</p>
acsPackText	<p>free text specifying the type of wrapping or packing used for the accessory</p> <p>- base type: string, max length: 250, (XPath GARDesRequest/shipInfo/packages/handlingChar/acsPack/acsPackText) 1-1 (U) (XPath GARDesRequest/GRbody/GRitem/shipInfo/packages/handlingChar/acsPack/acsPackText) 1-1 (U)</p>
actualItemsPerPackage	<p>the quantity of items actually contained in the package</p> <p>- base type: decimal, (XPath GARDesRequest/shipInfo/actualPackageUnit/actualItemsPerPackage) 0-1 (N)</p>

	(XPath GARDesRequest/GRbody/GRitem/shipInfo/actualPackageUnit/actualItemsPerPackage) 0-1 (N)
added	additional code of the product (complementing the formers) - base type: string, max length: 80, (XPath GARDesRequest/GRbody/GRitem/texCode/added) 0-9 - note: <i>here an additional codification (see table T44) can be specified</i> (XPath GARDesRequest/GRbody/GRitem/garmentCode/garmentCodeB/added) 0-9 (XPath GARDesRequest/GRbody/GRitem/garmentPartCode/added) 0-19 (XPath GARDesRequest/GRbody/GRitem/acsCode/added) 0-9 - note: <i>here an additional codification (see table T44) can be specified</i> (XPath GARDesRequest/GRbody/GRitem/yarnCode/added) 0-9 - note: <i>here an additional codification (see table T44) can be specified</i>
additionalComponentCode	an additional code to identify a fashion product or a part of it (it is a way to codify the item, but it is not one of the codes to identify it). It is not a serial identifier. - base type: string, (XPath GARDesRequest/GRbody/GRitem/additionalComponentCode) 0-9 (N) (XPath GARDesRequest/GRbody/GRitem/csRange/sizeMatrix/sizeRow/additionalComponentCode) 0-9 (N)
additionalIdentifier	additional identification code of a Party, for example customs registries or others - base type: string, max length: 15, (XPath GARDesRequest/GRheader/supplier/additionalIdentifier) 0-9 (N) - note: <i>identifiers for example for exports, such as MID (Manufacturer Identification Code), EORI (E.O.R.I. - Economic Operator Registration and Identification)</i> (XPath GARDesRequest/GRheader/buyer/additionalIdentifier) 0-9 (N) - note: <i>identifiers for example for exports, such as MID (Manufacturer Identification Code), EORI (E.O.R.I. - Economic Operator Registration and Identification)</i>
@addType	qualifier of the additional coding of a product - base type: string, cod. table: T44 http://www.ebiz.enea.it/moda-ml/repository/codelist/v2018-1/gc_T44.xml (XPath GARDesRequest/GRbody/GRitem/garmentCode/garmentCodeB/added/@addType) [Optional] - nota: <i>addType allows the clarification of the meaning of the added element content; it is strongly suggested to use it always.</i> (XPath GARDesRequest/GRbody/GRitem/texCode/added/@addType) [Optional] - nota: <i>addType allows the clarification of the meaning of the added element content; it is strongly suggested to use it always.</i> (XPath GARDesRequest/GRbody/GRitem/garmentPartCode/added/@addType) [Optional] - nota: <i>addType allows the clarification of the meaning of the added element content; it is strongly suggested to use it always.</i> (XPath GARDesRequest/GRbody/GRitem/yarnCode/added/@addType) [Optional] - nota: <i>addType allows the clarification of the meaning of the added element content; it is strongly suggested to use it always.</i> (XPath GARDesRequest/GRbody/GRitem/acsCode/added/@addType) [Optional] - nota: <i>addType allows the clarification of the meaning of the added element content; it is strongly suggested to use it always.</i>
art	article number of the product - base type: string, max length: 80, (XPath GARDesRequest/GRbody/GRitem/garmentCode/garmentCodeA/art) 1-1 (U) (XPath GARDesRequest/GRbody/GRitem/acsCode/art) 1-1 (U) (XPath GARDesRequest/GRbody/GRitem/yarnCode/art) 1-1 (U) (XPath GARDesRequest/GRbody/GRitem/texCode/art) 1-1 (U)

	- note: can be used either for the base-article (excluding pattern/colour) or for the SKU
artGroup	code identifying a class of products - base type: string, max length: 40, (XPath GARDesRequest/GRbody/GRitem/garmentCode/garmentCodeB/artGroup) 0-1
binaryObject	a binary large object containing an attached document, Coding 'base64Binary' is recommended. - base type: base64Binary, (XPath GARDesRequest/GRheader/refDoc/attachment/binaryObject) 0-1 (N) (XPath GARDesRequest/GRbody/GRitem/refDoc/attachment/binaryObject) 0-1 (N)
carrier	identification of the transport carrier - base type: string, max length: 40, (XPath GARDesRequest/GRbody/GRitem/shipInfo/transInfo/carrier) 0-1 (XPath GARDesRequest/shipInfo/transInfo/carrier) 0-1
@characterSet	the character set of the binary object (examples UTF-8, UTF-16, Windows-1252, ISO-8859-7,...) - base type: normalizedString, (XPath GARDesRequest/GRbody/GRitem/refDoc/attachment/binaryObject/@characterSet) [Optional] (N) (XPath GARDesRequest/GRheader/refDoc/attachment/binaryObject/@characterSet) [Optional] (N)
characterSetCode	the character set of an external document (examples UTF-8, UTF-16, Windows-1252, ISO-8859-7,...) - base type: normalizedString, (XPath GARDesRequest/GRbody/GRitem/refDoc/attachment/externalReference/characterSetCode) 0-1 (N) (XPath GARDesRequest/GRheader/refDoc/attachment/externalReference/characterSetCode) 0-1 (N)
city	name of the city (town, village) - base type: string, max length: 40, (XPath GARDesRequest/GRheader/buyer/city) 0-1 (XPath GARDesRequest/GRheader/thirdParty/city) 0-1 (XPath GARDesRequest/GRheader/supplier/city) 0-1 (XPath GARDesRequest/GRbody/GRitem/thirdParty/city) 0-1
@codeList	it specifies the URL where the list of codes used to make an instance of the element can be found - base type: string, max length: 255, (XPath GARDesRequest/GRbody/GRitem/csRange/drop/@codeList) [Optional] (XPath GARDesRequest/GRbody/GRitem/csRange/sizeMatrix/sizeRow/drop/@codeList) [Optional] (XPath GARDesRequest/GRbody/GRitem/csRange/sizeMatrix/sizeRow/additionalComponentCode/@codeList) [Optional] (a) - nota: at least one out of this attribute and "numberingOrg" should be set (XPath GARDesRequest/shipInfo/actualPackageUnit/itemsList/qualityLevel/@codeList) [Optional] (a) - nota: at least one out of this attribute and "numberingOrg" should be set (XPath GARDesRequest/GRbody/GRitem/refDoc/season/@codeList) [Optional] (a) - nota: this attribute should be used either single or coupled with "listName" and "listVersion" (XPath GARDesRequest/GRbody/GRitem/csRange/color/@codeList) [Optional] - nota: this attribute should be used either single or coupled with "listName" and "listVersion" (XPath GARDesRequest/GRbody/GRitem/phaseCode/@codeList) [Optional] (a) - nota: at least one out of this attribute and "numberingOrg" should be set (XPath GARDesRequest/shipInfo/actualPackageUnit/note/@codeList) [Optional] - nota: must be used to provide (URL) the list of codes used in "noteLabel" (XPath GARDesRequest/GRbody/GRitem/csRange/garmentVariant/variantCode/@codeList) [Optional]

- nota: *at least one out of this attribute and "numberingOrg" should be set* (XPath GARDesRequest/GRbody/GRitem/csRange/garmentVariant/variantType/@codeList) [Optional]

- nota: *always at least one out of this attribute and "numberingOrg" should be set* (XPath GARDesRequest/GRbody/GRitem/itemsList/qualityLevel/@codeList) [Optional] (a)

- nota: *at least one out of this attribute and "numberingOrg" should be set* (XPath GARDesRequest/GRbody/GRitem/shipInfo/actualPackageUnit/note/@codeList) [Optional]

- nota: *must be used to provide (URL) the list of codes used in "noteLabel"* (XPath GARDesRequest/GRbody/GRitem/shipInfo/actualPackageUnit/itemsList/qualityLevel/@codeList) [Optional] (a)

- nota: *at least one out of this attribute and "numberingOrg" should be set* (XPath GARDesRequest/GRbody/GRitem/note/@codeList) [Optional]

- nota: *must be used to provide (URL) the list of codes used in "noteLabel"* (XPath GARDesRequest/shipInfo/packages/handlingChar/garPack/garPackCode/@codeList) [Optional] (a)

- nota: *at least one out of this attribute and "numberingOrg" should be set* (XPath GARDesRequest/shipInfo/packages/handlingChar/note/@codeList) [Optional]

- nota: *must be used to provide (URL) the list of codes used in "noteLabel"* (XPath GARDesRequest/GRbody/GRitem/shipInfo/packages/handlingChar/acsPack/acsPackCode/@codeList) [Optional] (a)

- nota: *at least one out of this attribute and "numberingOrg" should be set* (XPath GARDesRequest/GRbody/GRitem/csRange/sizeMatrix/sizeRow/itemsList/qualityLevel/@codeList) [Optional] (a)

- nota: *at least one out of this attribute and "numberingOrg" should be set* (XPath GARDesRequest/GRbody/GRitem/csRange/sizeMatrix/sizeRow/size/@codeList) [Optional]

(XPath GARDesRequest/GRbody/GRitem/shipInfo/packages/handlingChar/note/@codeList) [Optional]

- nota: *must be used to provide (URL) the list of codes used in "noteLabel"* (XPath GARDesRequest/GRbody/GRitem/shipInfo/packages/handlingChar/garPack/garPackCode/@codeList) [Optional] (a)

- nota: *at least one out of this attribute and "numberingOrg" should be set* (XPath GARDesRequest/GRheader/refDoc/season/@codeList) [Optional] (a)

- nota: *this attribute should be used either single or coupled with "listName" and "listVersion"* (XPath GARDesRequest/GRbody/GRitem/texCode/art/@codeList) [Optional]

- nota: *at least one out of this attribute and "numberingOrg" should be set* (XPath GARDesRequest/GRbody/GRitem/texCode/pattern/@codeList) [Optional]

- nota: *at least one out of this attribute and "numberingOrg" should be set* (XPath GARDesRequest/shipInfo/packages/handlingChar/acsPack/acsPackCode/@codeList) [Optional] (a)

- nota: *at least one out of this attribute and "numberingOrg" should be set* (XPath GARDesRequest/GRbody/GRitem/garmentPartCode/size/@codeList) [Optional]

(XPath GARDesRequest/GRbody/GRitem/garmentPartCode/color/@codeList) [Optional]

- nota: *this attribute should be used either single or coupled with "listName" and "listVersion"* (XPath GARDesRequest/GRbody/GRitem/garmentPartCode/fabric/@codeList) [Optional]

- nota: *at least one out of this attribute and "numberingOrg" should be set* (XPath GARDesRequest/GRbody/GRitem/acsCode/pattern/@codeList) [Optional]

- nota: *at least one out of this attribute and "numberingOrg" should be set* (XPath GARDesRequest/GRbody/GRitem/acsCode/art/@codeList) [Optional]

- nota: *at least one out of this attribute and "numberingOrg" should be set* (XPath GARDesRequest/GRheader/note/@codeList) [Optional]

- nota: *must be used to provide (URL) the list of codes used in "noteLabel"* (XPath GARDesRequest/GRbody/GRitem/garmentPartCode/mod/@codeList) [Optional]

	<p>- nota: <i>at least one out of this attribute and "numberingOrg" should be set</i> (XPath GARDesRequest/GRbody/GRitem/texCode/color/@codeList) [Optional]</p> <p>- nota: <i>this attribute should be used either single or coupled with "listName" and "listVersion"</i> (XPath GARDesRequest/GRbody/GRitem/acsCode/color/@codeList) [Optional]</p> <p>- nota: <i>this attribute should be used either single or coupled with "listName" and "listVersion"</i> (XPath GARDesRequest/GRbody/GRitem/garmentCode/garmentCodeB/drop/@codeList) [Optional]</p> <p>(XPath GARDesRequest/GRbody/GRitem/garmentCode/garmentCodeB/garmentVariant/variantCode/@codeList) [Optional] (a)</p> <p>- nota: <i>at least one out of this attribute and "numberingOrg" should be set</i> (XPath GARDesRequest/GRbody/GRitem/additionalComponentCode/@codeList) [Optional] (a)</p> <p>- nota: <i>at least one out of this attribute and "numberingOrg" should be set</i> (XPath GARDesRequest/GRbody/GRitem/garmentCode/garmentCodeA/art/@codeList) [Optional]</p> <p>- nota: <i>at least one out of this attribute and "numberingOrg" should be set</i> (XPath GARDesRequest/GRbody/GRitem/garmentCode/garmentCodeB/artGroup/@codeList) [Optional]</p> <p>- nota: <i>at least one out of this attribute and "numberingOrg" should be set</i> (XPath GARDesRequest/GRbody/GRitem/garmentCode/garmentCodeB/size/@codeList) [Optional]</p> <p>(XPath GARDesRequest/GRbody/GRitem/yarnCode/color/@codeList) [Optional]</p> <p>- nota: <i>this attribute should be used either single or coupled with "listName" and "listVersion"</i> (XPath GARDesRequest/GRbody/GRitem/garmentCode/garmentCodeB/fabric/@codeList) [Optional]</p> <p>- nota: <i>at least one out of this attribute and "numberingOrg" should be set</i> (XPath GARDesRequest/GRbody/GRitem/garmentCode/garmentCodeB/mod/@codeList) [Optional]</p> <p>- nota: <i>at least one out of this attribute and "numberingOrg" should be set</i> (XPath GARDesRequest/GRbody/GRitem/garmentCode/garmentCodeB/garmentVariant/variantType/@codeList) [Optional] (a)</p> <p>- nota: <i>always at least one out of this attribute and "numberingOrg" should be set</i> (XPath GARDesRequest/GRbody/GRitem/yarnCode/art/@codeList) [Optional]</p> <p>- nota: <i>at least one out of this attribute and "numberingOrg" should be set</i> (XPath GARDesRequest/GRbody/GRitem/garmentCode/garmentCodeB/color/@codeList) [Optional]</p> <p>- nota: <i>this attribute should be used either single or coupled with "listName" and "listVersion"</i></p>
color	<p>colour number of the product, when not included in the model or fabric code</p> <p>- base type: string, max length: 15, (XPath GARDesRequest/GRbody/GRitem/garmentPartCode/color) 0-1</p> <p>- note: <i>when a garment component, it should be the code assigned to the garment article</i> (XPath GARDesRequest/GRbody/GRitem/garmentCode/garmentCodeB/color) 0-1</p> <p>(XPath GARDesRequest/GRbody/GRitem/csRange/color) 0-1</p> <p>- note: <i>used only if not already specified in the article code</i> (XPath GARDesRequest/GRbody/GRitem/yarnCode/color) 0-1 (XPath GARDesRequest/GRbody/GRitem/texCode/color) 0-1 (XPath GARDesRequest/GRbody/GRitem/acsCode/color) 0-1</p>
country	<p>code of the nation</p> <p>- base type: string, cod. table: T10 http://www.ebiz.enea.it/moda-ml/repository/codelist/v2018-1/gc_T10.xml</p> <p>(XPath GARDesRequest/GRheader/buyer/country) 0-1 (XPath GARDesRequest/GRbody/GRitem/thirdParty/country) 0-1 (XPath GARDesRequest/GRheader/supplier/country) 0-1 (XPath GARDesRequest/GRheader/thirdParty/country) 0-1</p>

@dateForm	<p>format used for the date</p> <p>- base type: string, cod. table: NT29 http://www.ebiz.enea.it/moda-ml/repository/codelist/v2018-1/gc_NT29.xml (XPath GARDesRequest/shipInfo/transInfo/delEffectiveDate/@dateForm) [Optional] (XPath GARDesRequest/GRheader/refDoc/docDate/@dateForm) [Optional] (XPath GARDesRequest/GRbody/GRitem/shipInfo/transInfo/delEffectiveDate/@dateForm) [Optional] (XPath GARDesRequest/GRbody/GRitem/shipInfo/transInfo/despatchDate/@dateForm) [Optional] (XPath GARDesRequest/shipInfo/delEffectiveDate/@dateForm) [Optional] (XPath GARDesRequest/GRbody/GRitem/shipInfo/delEffectiveDate/@dateForm) [Optional] (XPath GARDesRequest/GRheader/msgDate/@dateForm) [Optional] (XPath GARDesRequest/GRbody/GRitem/refDoc/docDate/@dateForm) [Optional] (XPath GARDesRequest/shipInfo/transInfo/despatchDate/@dateForm) [Optional] (a)</p>
delEffectiveDate	<p>effective date of delivery of goods (declared in Despatch), according to one of the patterns YYYY-MM-DD, YYYY-MM-DD:HH-MM or YYYY-WW.</p> <p>- base type: string, (XPath GARDesRequest/shipInfo/transInfo/delEffectiveDate) 0-1 (p) (XPath GARDesRequest/GRbody/GRitem/shipInfo/delEffectiveDate) 0-1 (XPath GARDesRequest/shipInfo/delEffectiveDate) 0-1 (XPath GARDesRequest/GRbody/GRitem/shipInfo/transInfo/delEffectiveDate) 0-1 (p)</p>
deliveryPlace	<p>place of delivery of goods, ultimate or related to a given leg</p> <p>- base type: string, max length: 250, (XPath GARDesRequest/shipInfo/transInfo/deliveryPlace) 0-1 (U) (XPath GARDesRequest/GRbody/GRitem/shipInfo/transInfo/deliveryPlace) 0-1 (U)</p>
dept	<p>name or code of a contact department within a Party</p> <p>- base type: string, max length: 40, (XPath GARDesRequest/GRheader/supplier/dept) 0-1 (XPath GARDesRequest/GRbody/GRitem/thirdParty/dept) 0-1 (XPath GARDesRequest/GRheader/buyer/dept) 0-1 (XPath GARDesRequest/GRheader/thirdParty/dept) 0-1</p>
description	<p>free text description. The content of the element must be unique, it might be translated and repeated into more languages (thus no more than one instance for each language).</p> <p>- base type: string, max length: 250, (XPath GARDesRequest/GRbody/GRitem/acsCode/description) 0-unbounded (AU) - note: <i>Product description</i> (XPath GARDesRequest/GRbody/GRitem/garmentPartCode/description) 0-unbounded (AU) - note: <i>Product part description</i> (XPath GARDesRequest/GRbody/GRitem/garmentCode/garmentCodeA/description) 0-unbounded (AU) - note: <i>Product description</i> (XPath GARDesRequest/GRbody/GRitem/shipInfo/packages/description) 0-unbounded (AU) (XPath GARDesRequest/GRbody/GRitem/texCode/description) 0-unbounded (pAU) - note: <i>Product description</i> (XPath GARDesRequest/GRbody/GRitem/garmentCode/garmentCodeB/description) 0-unbounded (AU) - note: <i>Product description</i> (XPath GARDesRequest/GRbody/GRitem/yarnCode/description) 0-unbounded (AU) - note: <i>Product description</i> (XPath GARDesRequest/shipInfo/packages/description) 0-unbounded (AU)</p>
despatchDate	<p>date of despatch of goods, requested or promised in the purchase process, according to one of the patterns YYYY-MM-DD, YYYY-MM-DD:HH-MM or YYYY-WW.</p> <p>- base type: string, (XPath GARDesRequest/shipInfo/transInfo/despatchDate) 0-1 (N)</p>

	(XPath GARDesRequest/GRbody/GRitem/shipInfo/transInfo/despatchDate) 0-1 (N)
despatchPlace	place of despatch of goods, origin or related to a given leg - base type: string, max length: 250, (XPath GARDesRequest/shipInfo/transInfo/despatchPlace) 0-1 (N) (XPath GARDesRequest/GRbody/GRitem/shipInfo/transInfo/despatchPlace) 0-1 (N)
docDate	date of issue of the referenced document, according to one of the patterns Y YYY-MM-DD, YYYY-MM-DD:HH-MM or YYYY-WW. - base type: string, (XPath GARDesRequest/GRbody/GRitem/refDoc/docDate) 0-1 (XPath GARDesRequest/GRheader/refDoc/docDate) 0-1
docID	identification number of the referenced document SINCE 2008-1 ITS USE I N THE HEADER IS DISCOURAGED (REPLACED BY msgID) - base type: string, max length: 80, (XPath GARDesRequest/GRbody/GRitem/refDoc/docID) 1-2 (p) <hr/> AAAA-WARNING! - text not AVAILABLE n. 245 - In=en (XPath GARDesRequest/GRheader/docID) 0-1 (XPath GARDesRequest/GRheader/refDoc/docID) 1-2 (p) <hr/> AAAA-WARNING! - text not AVAILABLE n. 245 - In=en
@docType	type or class to which the referenced document belongs - base type: string, cod. table: T21 http://www.ebiz.enea.it/moda-ml/repository/codelist/v2018-1/gc_T21.xml (XPath GARDesRequest/GRheader/refDoc/@docType) [Required] (XPath GARDesRequest/GRbody/GRitem/refDoc/@docType) [Required]
drop	drop number of the garment - base type: string, max length: 15, (XPath GARDesRequest/GRbody/GRitem/csRange/drop) 0-1 (Ap) - note: <i>used only if not already specified in the article code</i> (XPath GARDesRequest/GRbody/GRitem/garmentCode/ garmentCodeB/drop) 0-1 (A) - note: <i>Fill this element if the drop is the same for all the sizes of the model. Otherway specify it within the csRange element</i> (XPath GARDesRequest/GRbody/GRitem/csRange/sizeMatrix/ sizeRow/drop) 0-1 (A) - note: <i>DEPRECATED, anyhow it is used only if not already specified in the article code or csRange</i>
@email	electronic mail address of the contact person within a Party - base type: string, max length: 250, (XPath GARDesRequest/GRheader/thirdParty/person/@email) [Optional] (XPath GARDesRequest/GRbody/GRitem/thirdParty/person/@email) [Optional] (XPath GARDesRequest/GRheader/buyer/person/@email) [Optional] (XPath GARDesRequest/GRheader/supplier/person/@email) [Optional]
@encoding	specifies the decoding algorithm of the binary object - base type: normalizedString, (XPath GARDesRequest/GRbody/GRitem/refDoc/attachment/ binaryObject/@encoding) [Optional] (N) (XPath GARDesRequest/GRheader/refDoc/attachment/ binaryObject/@encoding) [Optional] (N)
encodingCode	the encoding/decoding algorithm used with the external object (example is ' base64Binary') - base type: normalizedString, (XPath GARDesRequest/GRbody/GRitem/refDoc/attachment/ externalReference/encodingCode) 0-1 (N) (XPath GARDesRequest/GRheader/refDoc/attachment/ externalReference/encodingCode) 0-1 (N)
EPC	serial identifier used for tracing a physical item with RFID technology - base type: string,

	(XPath GARDesRequest/GRbody/GRitem/shipInfo/packages/EPCList/EPC) 1-unbounded (XPath GARDesRequest/shipInfo/packages/EPCList/EPC) 1-unbounded
fabric	fabric number of the garment - base type: string, max length: 15, (XPath GARDesRequest/GRbody/GRitem/garmentCode/garmentCodeB/fabric) 0-1 (XPath GARDesRequest/GRbody/GRitem/garmentPartCode/fabric) 0-1 - note: <i>when a garment component, it should be the code assigned to the garment article</i>
@fax	fax number of the contact person within a Party - base type: string, max length: 35, (XPath GARDesRequest/GRheader/buyer/person/@fax) [Optional] (XPath GARDesRequest/GRbody/GRitem/thirdParty/person/@fax) [Optional] (XPath GARDesRequest/GRheader/thirdParty/person/@fax) [Optional] (XPath GARDesRequest/GRheader/supplier/person/@fax) [Optional]
fileName	unique identifier (name) of the file - base type: string, max length: 255, (XPath GARDesRequest/GRheader/refDoc/attachment/fileName) 0-1 (N) (XPath GARDesRequest/GRbody/GRitem/refDoc/attachment/fileName) 0-1 (N)
fillingCriterion	the assortment criterion to fill the specified kind of package: it states the homogeneity criterion (eg: "model", "color", "size"). - base type: string, cod. table: NT51 http://www.ebiz.enea.it/moda-ml/repository/codelist/v2018-1/gc_NT51.xml (XPath GARDesRequest/shipInfo/packages/fillingCriterion) 0-9 (N) (XPath GARDesRequest/GRbody/GRitem/shipInfo/packages/fillingCriterion) 0-9 (N)
@format	the format of the binary content (examples xml, pdf, doc,...) - base type: string, (XPath GARDesRequest/GRheader/refDoc/attachment/binaryObject/@format) [Optional] (N) (XPath GARDesRequest/GRbody/GRitem/refDoc/attachment/binaryObject/@format) [Optional] (N)
formatCode	the format of the external object (examples xml, pdf, doc,...) - base type: normalizedString, (XPath GARDesRequest/GRbody/GRitem/refDoc/attachment/externalReference/formatCode) 0-1 (N) (XPath GARDesRequest/GRheader/refDoc/attachment/externalReference/formatCode) 0-1 (N)
garPackCode	a code specifying the type of packaging used for the item. - base type: string, (XPath GARDesRequest/GRbody/GRitem/shipInfo/packages/handlingChar/garPack/garPackCode) 1-1 (N) (XPath GARDesRequest/shipInfo/packages/handlingChar/garPack/garPackCode) 1-1 (N)
garPackText	a free text specifying the type of packaging used for the item. - base type: string, (XPath GARDesRequest/GRbody/GRitem/shipInfo/packages/handlingChar/garPack/garPackText) 1-1 (N) (XPath GARDesRequest/shipInfo/packages/handlingChar/garPack/garPackText) 1-1 (N)
gPart	code specifying the type of component or part of a fashion product (sleeve, neck, ...) - base type: string, cod. table: T48 http://www.ebiz.enea.it/moda-ml/repository/codelist/v2018-1/gc_T48.xml (XPath GARDesRequest/GRbody/GRitem/garmentPartCode/gPart) 1-1
grossWeight	the gross weight, declared for transport or customs purpose - base type: decimal, min inclusive: 0, fraction digits: 2, (XPath GARDesRequest/GRbody/GRitem/shipInfo/transInfo/grossWeight) 0-1

	<p>(XPath GARDesRequest/GRbody/GRitem/shipInfo/actualPackageUnit/grossWeight) 0-1 (XPath GARDesRequest/shipInfo/packages/handlingChar/grossWeight) 0-1 (XPath GARDesRequest/GRbody/GRitem/shipInfo/packages/ handlingChar/grossWeight) 0-1 (XPath GARDesRequest/shipInfo/actualPackageUnit/grossWeight) 0-1 (XPath GARDesRequest/shipInfo/transInfo/grossWeight) 0-1</p>
handlingType	<p>information to handle the item (eg "breakable"). - base type: string, (XPath GARDesRequest/shipInfo/packages/handlingChar/handlingType) 0-1 (N) (XPath GARDesRequest/GRbody/GRitem/shipInfo/packages/ handlingChar/handlingType) 0-1 (N)</p>
height	<p>effective height of a specified object - base type: decimal, min inclusive: 0, fraction digits: 2, (XPath GARDesRequest/shipInfo/actualPackageUnit/ packageDim/height) 0-1 (XPath GARDesRequest/shipInfo/packages/packageDim/height) 0-1 (XPath GARDesRequest/GRbody/GRitem/shipInfo/actualPackageUnit/packageDim/ height) 0-1 (XPath GARDesRequest/GRbody/GRitem/shipInfo/packages/ packageDim/height) 0-1</p>
id	<p>primary identification code of a Party; it is recommended the format: nation code (ISO 3166) + VAT identification number (11 crt), with the qualifier "numberingOrg"= MF - base type: string, max length: 15, (XPath GARDesRequest/GRheader/buyer/id) 1-1 (p) (XPath GARDesRequest/GRbody/GRitem/thirdParty/id) 1-1 (XPath GARDesRequest/GRheader/thirdParty/id) 1-1 (XPath GARDesRequest/GRheader/supplier/id) 1-1</p>
@idQualifier	<p>Qualification of the identifier. - base type: string, (XPath GARDesRequest/shipInfo/actualPackageUnit/ packagelIdentification/serialN/@idQualifier) [Optional] (N) - nota: <i>this attribute should be used when the numberingOrg attribute is not enough to declare the type of serial identifier</i> (XPath GARDesRequest/shipInfo/actualPackageUnit/ itemsList/itemIdentification/serialN/@idQualifier) [Optional] (N) - nota: <i>this attribute should be used when the numberingOrg attribute is not enough to declare the type of serial identifier</i> (XPath GARDesRequest/GRbody/GRitem/shipInfo/actualPackageUnit/packagesList/ packagelIdentification/serialN/@idQualifier) [Optional] (N) - nota: <i>this attribute should be used when the numberingOrg attribute is not enough to declare the type of serial identifier</i> (XPath GARDesRequest/GRheader/supplier/additionalIdentifier/@idQualifier) [Optional] (Na) - nota: <i>this attribute should be used when the numberingOrg attribute is not enough to declare the type of identifier</i> (XPath GARDesRequest/GRbody/GRitem/shipInfo/actualPackageUnit/packagelIdent ification/serialN/@idQualifier) [Optional] (N) - nota: <i>this attribute should be used when the numberingOrg attribute is not enough to declare the type of serial identifier</i> (XPath GARDesRequest/GRbody/GRitem/csRange/sizeMatrix/ sizeRow/itemsList/itemIdentification/serialN/@idQualifier) [Optional] (N) - nota: <i>this attribute should be used when the numberingOrg attribute is not enough to declare the type of serial identifier</i> (XPath GARDesRequest/GRheader/buyer/additionalIdentifier/@idQualifier) [Optional] (Na)</p>

	<p>- nota: <i>this attribute should be used when the numberingOrg attribute is not enough to declare the type of identifier</i> (XPath GARDesRequest/GRbody/GRitem/itemsList/itemIdentification/serialN/@idQualifier) [Optional] (N)</p> <p>- nota: <i>this attribute should be used when the numberingOrg attribute is not enough to declare the type of serial identifier</i> (XPath GARDesRequest/shipInfo/actualPackageUnit/packagesList/packageIdentification/serialN/@idQualifier) [Optional] (N)</p> <p>- nota: <i>this attribute should be used when the numberingOrg attribute is not enough to declare the type of serial identifier</i> (XPath GARDesRequest/GRbody/GRitem/shipInfo/actualPackageUnit/itemsList/itemIdentification/serialN/@idQualifier) [Optional] (N)</p> <p>- nota: <i>this attribute should be used when the numberingOrg attribute is not enough to declare the type of serial identifier</i></p>
incoTerm	<p>specification of the terms of trade (INCOTERMS) - base type: string, cod. table: T3 http://www.ebiz.enea.it/moda-ml/repository/codelist/v2018-1/gc_T3.xml (XPath GARDesRequest/trade/incoTerm) 1-1</p>
incoTermText	<p>free text specifying the terms of trade (incoterm, location) - base type: string, max length: 250, (XPath GARDesRequest/trade/incoTermText) 1-1 (U)</p>
@isURL	<p>it indicates if the referred element is an URL (true) or not (false) - base type: boolean, (XPath GARDesRequest/GRbody/GRitem/refDoc/attachment/externalReference/uri/@isURL) [Optional] [Default= true] (Na)</p> <p>- nota: <i>usage of URLs is recommended</i> (XPath GARDesRequest/GRheader/refDoc/attachment/externalReference/uri/@isURL) [Optional] [Default= true] (Na)</p> <p>- nota: <i>usage of URLs is recommended</i></p>
itemID	<p>number of the line/item of the referenced document - base type: string, max length: 40, (XPath GARDesRequest/GRheader/refDoc/itemID) 0-1 (U) (XPath GARDesRequest/GRbody/GRitem/refDoc/itemID) 0-1 (U)</p>
itemsPerPackage	<p>the quantity of items that can be contained in a package. - base type: decimal, (XPath GARDesRequest/GRbody/GRitem/shipInfo/packages/itemsPerPackage) 0-1 (N) (XPath GARDesRequest/shipInfo/packages/itemsPerPackage) 0-1 (N)</p>
label	<p>indicates if the physical object specified has to be labelled - base type: boolean, (XPath GARDesRequest/shipInfo/packages/handlingChar/yarnPack/yarnReel/label) 0-1 (XPath GARDesRequest/GRbody/GRitem/shipInfo/packages/handlingChar/yarnPack/yarnInWrap/label) 0-1 (XPath GARDesRequest/shipInfo/packages/handlingChar/yarnPack/yarnInWrap/label) 0-1 (XPath GARDesRequest/GRbody/GRitem/shipInfo/packages/handlingChar/yarnPack/yarnReel/label) 0-1</p>
labelWrit	<p>text that must be written on the lable of a specified physical object when its customization is required - base type: string, max length: 350, (XPath GARDesRequest/GRbody/GRitem/shipInfo/packages/handlingChar/yarnPack/yarnReel/labelWrit) 0-1 (XPath GARDesRequest/shipInfo/packages/handlingChar/yarnPack/yarnReel/labelWrit) 0-1 (XPath GARDesRequest/shipInfo/packages/handlingChar/yarnPack/yarnInWrap/labelWrit) 0-1</p>

	(XPath GARDesRequest/GRbody/GRitem/shipInfo/packages/handlingChar/yarnPack/yarnInWrap/labelWrit) 0-1
legalName	<p>legal name of a Party</p> <p>- base type: string, max length: 250,</p> <p>(XPath GARDesRequest/GRbody/GRitem/thirdParty/legalName) 0-1 (U)</p> <p>(XPath GARDesRequest/GRheader/buyer/legalName) 0-1 (U)</p> <p>(XPath GARDesRequest/GRheader/thirdParty/legalName) 0-1 (U)</p> <p>(XPath GARDesRequest/GRheader/supplier/legalName) 0-1 (U)</p>
length	<p>effective length of a specified object</p> <p>- base type: decimal, min inclusive: 0, fraction digits: 2,</p> <p>(XPath GARDesRequest/shipInfo/actualPackageUnit/packageDim/length) 1-1</p> <p>- note: <i>here the maximum dimension must also be specified</i></p> <p>(XPath GARDesRequest/GRbody/GRitem/shipInfo/packages/packageDim/length) 1-1</p> <p>- note: <i>here the maximum dimension must also be specified</i></p> <p>(XPath GARDesRequest/shipInfo/packages/packageDim/length) 1-1</p> <p>- note: <i>here the maximum dimension must also be specified</i></p> <p>(XPath GARDesRequest/GRbody/GRitem/shipInfo/actualPackageUnit/packageDim/length) 1-1</p> <p>- note: <i>here the maximum dimension must also be specified</i></p>
lineID	<p>unique identifier of the line item of the business document; it is set by the role that produces the document.</p> <p>- base type: string, max length: 30,</p> <p>(XPath GARDesRequest/GRbody/GRitem/lineID) 0-1 (N)</p>
lineN	<p>number of the line item of the present message (xml document); it is set by the role that produces the document. Usually it is a progressive number, but not always.</p> <p>- base type: positiveInteger, min inclusive: 1, max inclusive: 9999,</p> <p>(XPath GARDesRequest/GRbody/GRitem/lineN) 1-1</p>
@listName	<p>the name of the list of codes used to make an instance of the element (it might be thought as descriptive element, i.e. 'fabric printing technologies', or not, i.e. "T264")</p> <p>- base type: string, max length: 40,</p> <p>(XPath GARDesRequest/GRbody/GRitem/garmentCode/garmentCodeB/garmentVariant/variantCode/@listName) [Optional] (a)</p> <p>- nota: <i>this attribute should always be used coupled with "numberingOrg"</i></p> <p>(XPath GARDesRequest/GRbody/GRitem/garmentCode/garmentCodeB/drop/@listName) [Optional] (a)</p> <p>- nota: <i>this attribute should always be used coupled with "numberingOrg"</i></p> <p>(XPath GARDesRequest/GRbody/GRitem/csRange/sizeMatrix/sizeRow/itemsList/qualityLevel/@listName) [Optional] (a)</p> <p>- nota: <i>this attribute should always be used coupled with "numberingOrg"</i></p> <p>(XPath GARDesRequest/GRbody/GRitem/acsCode/color/@listName) [Optional]</p> <p>- nota: <i>this attribute should always be used coupled with "numberingOrg"</i></p> <p>(XPath GARDesRequest/GRbody/GRitem/acsCode/pattern/@listName) [Optional]</p> <p>- nota: <i>this attribute should always be used coupled with "numberingOrg"</i></p> <p>(XPath GARDesRequest/GRbody/GRitem/texCode/pattern/@listName) [Optional]</p> <p>- nota: <i>this attribute should always be used coupled with "numberingOrg"</i></p> <p>(XPath GARDesRequest/GRbody/GRitem/texCode/art/@listName) [Optional]</p> <p>- nota: <i>this attribute should always be used coupled with "numberingOrg"</i></p> <p>(XPath GARDesRequest/GRbody/GRitem/garmentCode/garmentCodeB/artGroup/@listName) [Optional]</p> <p>- nota: <i>this attribute should always be used coupled with "numberingOrg"</i></p> <p>(XPath GARDesRequest/GRbody/GRitem/texCode/color/@listName) [Optional]</p> <p>- nota: <i>this attribute should always be used coupled with "numberingOrg"</i></p> <p>(XPath GARDesRequest/GRbody/GRitem/acsCode/art/@listName) [Optional]</p> <p>- nota: <i>this attribute should always be used coupled with "numberingOrg"</i></p> <p>(XPath GARDesRequest/GRbody/GRitem/garmentCode/garmentCodeB/size/@listName) [Optional] (a)</p>

- nota: *this attribute should always be used coupled with “numberingOrg”* (XPath GARDesRequest/GRheader/refDoc/season/@listName) [Optional] (a)
- nota: *this attribute should always be used coupled with “numberingOrg”* (XPath GARDesRequest/GRbody/GRitem/garmentCode/garmentCodeB/fabric/@listName) [Optional]
- nota: *this attribute should always be used coupled with “numberingOrg”* (XPath GARDesRequest/GRbody/GRitem/garmentPartCode/color/@listName) [Optional]
- nota: *this attribute should always be used coupled with “numberingOrg”* (XPath GARDesRequest/GRbody/GRitem/csRange/garmentVariant/variantType/@listName) [Optional]
- nota: *this attribute should always be used coupled with “numberingOrg”* (XPath GARDesRequest/GRbody/GRitem/garmentPartCode/fabric/@listName) [Optional]
- nota: *this attribute should always be used coupled with “numberingOrg”* (XPath GARDesRequest/GRbody/GRitem/csRange/color/@listName) [Optional]
- nota: *this attribute should always be used coupled with “numberingOrg”* (XPath GARDesRequest/GRbody/GRitem/phaseCode/@listName) [Optional] (a)
- nota: *this attribute should always be used coupled with “numberingOrg”* (XPath GARDesRequest/GRbody/GRitem/shipInfo/packages/handlingChar/acsPack/acsPackCode/@listName) [Optional] (a)
- nota: *this attribute should always be used coupled with “numberingOrg”* (XPath GARDesRequest/GRbody/GRitem/garmentPartCode/size/@listName) [Optional] (a)
- nota: *this attribute should always be used coupled with “numberingOrg”* (XPath GARDesRequest/GRbody/GRitem/garmentCode/garmentCodeB/mod/@listName) [Optional]
- nota: *this attribute should always be used coupled with “numberingOrg”* (XPath GARDesRequest/GRbody/GRitem/garmentCode/garmentCodeA/art/@listName) [Optional]
- nota: *this attribute should always be used coupled with “numberingOrg”* (XPath GARDesRequest/GRbody/GRitem/csRange/sizeMatrix/sizeRow/drop/@listName) [Optional] (a)
- nota: *this attribute should always be used coupled with “numberingOrg”* (XPath GARDesRequest/GRbody/GRitem/garmentCode/garmentCodeB/garmentVariant/variantType/@listName) [Optional] (a)
- nota: *this attribute should always be used coupled with “numberingOrg”* (XPath GARDesRequest/GRbody/GRitem/csRange/sizeMatrix/sizeRow/size/@listName) [Optional] (a)
- nota: *this attribute should always be used coupled with “numberingOrg”* (XPath GARDesRequest/GRbody/GRitem/shipInfo/packages/handlingChar/garPack/garPackCode/@listName) [Optional] (a)
- nota: *this attribute should always be used coupled with “numberingOrg”* (XPath GARDesRequest/GRbody/GRitem/csRange/sizeMatrix/sizeRow/additionalComponentCode/@listName) [Optional] (a)
- nota: *this attribute should always be used coupled with “numberingOrg”* (XPath GARDesRequest/GRbody/GRitem/csRange/drop/@listName) [Optional] (a)
- nota: *this attribute should always be used coupled with “numberingOrg”* (XPath GARDesRequest/GRbody/GRitem/csRange/garmentVariant/variantCode/@listName) [Optional]
- nota: *this attribute should always be used coupled with “numberingOrg”* (XPath GARDesRequest/GRbody/GRitem/garmentPartCode/mod/@listName) [Optional]
- nota: *this attribute should always be used coupled with “numberingOrg”* (XPath GARDesRequest/GRbody/GRitem/garmentCode/garmentCodeB/color/@listName) [Optional]
- nota: *this attribute should always be used coupled with “numberingOrg”* (XPath GARDesRequest/GRbody/GRitem/yarnCode/color/@listName) [Optional]
- nota: *this attribute should always be used coupled with “numberingOrg”* (XPath GARDesRequest/GRbody/GRitem/refDoc/season/@listName) [Optional] (a)
- nota: *this attribute should always be used coupled with “numberingOrg”* (XPath GARDesRequest/GRbody/GRitem/shipInfo/actualPackageUnit/itemsList/qualityLevel/@listName) [Optional] (a)
- nota: *this attribute should always be used coupled with “numberingOrg”*

	<p>(XPath GARDesRequest/GRbody/GRitem/itemsList/qualityLevel/@listName) [Optional] (a)</p> <p>- nota: <i>this attribute should always be used coupled with “numberingOrg”</i></p> <p>(XPath GARDesRequest/GRbody/GRitem/yarnCode/art/@listName) [Optional]</p> <p>- nota: <i>this attribute should always be used coupled with “numberingOrg”</i></p> <p>(XPath GARDesRequest/shipInfo/packages/handlingChar/garPack/garPackCode/@listName) [Optional] (a)</p> <p>- nota: <i>this attribute should always be used coupled with “numberingOrg”</i></p> <p>(XPath GARDesRequest/GRbody/GRitem/additionalComponentCode/@listName) [Optional] (a)</p> <p>- nota: <i>this attribute should always be used coupled with “numberingOrg”</i></p> <p>(XPath GARDesRequest/shipInfo/packages/handlingChar/acsPack/acsPackCode/@listName) [Optional] (a)</p> <p>- nota: <i>this attribute should always be used coupled with “numberingOrg”</i></p> <p>(XPath GARDesRequest/shipInfo/actualPackageUnit/itemsList/qualityLevel/@listName) [Optional] (a)</p> <p>- nota: <i>this attribute should always be used coupled with “numberingOrg”</i></p>
@listVersion	<p>it specifies the version of the list of codes used to make an instance of the element</p> <p>- base type: string, max length: 6,</p> <p>(XPath GARDesRequest/GRbody/GRitem/garmentPartCode/size/@listVersion) [Optional] (a)</p> <p>- nota: <i>this attribute should always be used coupled with “numberingOrg” and “listName”</i></p> <p>(XPath GARDesRequest/GRbody/GRitem/garmentCode/garmentCodeB/artGroup/@listVersion) [Optional]</p> <p>- nota: <i>this attribute should always be used coupled with “numberingOrg” and “listName”</i></p> <p>(XPath GARDesRequest/GRbody/GRitem/csRange/sizeMatrix/sizeRow/size/@listVersion) [Optional] (a)</p> <p>- nota: <i>this attribute should always be used coupled with “numberingOrg” and “listName”</i></p> <p>(XPath GARDesRequest/GRbody/GRitem/csRange/sizeMatrix/sizeRow/itemsList/qualityLevel/@listVersion) [Optional] (a)</p> <p>- nota: <i>this attribute should always be used coupled with “numberingOrg” and “listName”</i></p> <p>(XPath GARDesRequest/GRbody/GRitem/garmentPartCode/mod/@listVersion) [Optional]</p> <p>- nota: <i>this attribute should always be used coupled with “numberingOrg” and “listName”</i></p> <p>(XPath GARDesRequest/GRbody/GRitem/acsCode/color/@listVersion) [Optional]</p> <p>- nota: <i>this attribute should always be used coupled with “numberingOrg” and “listName”</i></p> <p>(XPath GARDesRequest/GRbody/GRitem/additionalComponentCode/@listVersion) [Optional] (a)</p> <p>- nota: <i>this attribute should always be used coupled with “numberingOrg” and “listName”</i></p> <p>(XPath GARDesRequest/GRbody/GRitem/garmentPartCode/color/@listVersion) [Optional]</p> <p>- nota: <i>this attribute should always be used coupled with “numberingOrg” and “listName”</i></p> <p>(XPath GARDesRequest/GRbody/GRitem/refDoc/season/@listVersion) [Optional] (a)</p> <p>- nota: <i>this attribute should always be used coupled with “numberingOrg” and “listName”</i></p> <p>(XPath GARDesRequest/GRbody/GRitem/shipInfo/packages/handlingChar/acsPack/acsPackCode/@listVersion) [Optional] (a)</p> <p>- nota: <i>this attribute should always be used coupled with “numberingOrg” and “listName”</i></p> <p>(XPath GARDesRequest/GRbody/GRitem/garmentPartCode/fabric/@listVersion) [Optional]</p>

- nota: *this attribute should always be used coupled with “numberingOrg” and “listName”*
 (XPath GARDesRequest/GRbody/GRitem/csRange/garmentVariant/variantCode/@listVersion) [Optional]

- nota: *this attribute should always be used coupled with “numberingOrg” and “listName”*
 (XPath GARDesRequest/GRbody/GRitem/garmentCode/garmentCodeB/garmentVariant/variantType/@listVersion) [Optional] (a)

- nota: *this attribute should always be used coupled with “numberingOrg” and “listName”*
 (XPath GARDesRequest/GRbody/GRitem/csRange/color/@listVersion) [Optional]

- nota: *this attribute should always be used coupled with “numberingOrg” and “listName”*
 (XPath GARDesRequest/GRbody/GRitem/shipInfo/packages/handlingChar/garPack/garPackCode/@listVersion) [Optional] (a)

- nota: *this attribute should always be used coupled with “numberingOrg” and “listName”*
 (XPath GARDesRequest/GRbody/GRitem/garmentCode/garmentCodeB/drop/@listVersion) [Optional] (a)

- nota: *this attribute should always be used coupled with “numberingOrg” and “listName”*
 (XPath GARDesRequest/GRbody/GRitem/csRange/garmentVariant/variantType/@listVersion) [Optional]

- nota: *this attribute should always be used coupled with “numberingOrg” and “listName”*
 (XPath GARDesRequest/shipInfo/actualPackageUnit/itemsList/qualityLevel/@listVersion) [Optional] (a)

- nota: *this attribute should always be used coupled with “numberingOrg” and “listName”*
 (XPath GARDesRequest/GRbody/GRitem/garmentCode/garmentCodeB/garmentVariant/variantCode/@listVersion) [Optional] (a)

- nota: *this attribute should always be used coupled with “numberingOrg” and “listName”*
 (XPath GARDesRequest/GRbody/GRitem/shipInfo/actualPackageUnit/itemsList/qualityLevel/@listVersion) [Optional] (a)

- nota: *this attribute should always be used coupled with “numberingOrg” and “listName”*
 (XPath GARDesRequest/GRbody/GRitem/garmentCode/garmentCodeB/mod/@listVersion) [Optional]

- nota: *this attribute should always be used coupled with “numberingOrg” and “listName”*
 (XPath GARDesRequest/GRbody/GRitem/csRange/sizeMatrix/sizeRow/drop/@listVersion) [Optional] (a)

- nota: *this attribute should always be used coupled with “numberingOrg” and “listName”*
 (XPath GARDesRequest/GRbody/GRitem/csRange/sizeMatrix/sizeRow/additionalComponentCode/@listVersion) [Optional] (a)

- nota: *this attribute should always be used coupled with “numberingOrg” and “listName”*
 (XPath GARDesRequest/GRbody/GRitem/garmentCode/garmentCodeB/size/@listVersion) [Optional] (a)

- nota: *this attribute should always be used coupled with “numberingOrg” and “listName”*
 (XPath GARDesRequest/GRbody/GRitem/garmentCode/garmentCodeB/color/@listVersion) [Optional]

- nota: *this attribute should always be used coupled with “numberingOrg” and “listName”*
 (XPath GARDesRequest/GRbody/GRitem/garmentCode/garmentCodeB/fabric/@listVersion) [Optional]

- nota: *this attribute should always be used coupled with “numberingOrg” and “listName”*
 (XPath GARDesRequest/GRbody/GRitem/csRange/drop/@listVersion) [Optional] (a)

	<p>- nota: <i>this attribute should always be used coupled with “numberingOrg” and “listName”</i> (XPath GARDesRequest/GRbody/GRitem/phaseCode/@listVersion) [Optional] (a)</p> <p>- nota: <i>this attribute should always be used coupled with “numberingOrg” and “listName”</i> (XPath GARDesRequest/GRheader/refDoc/season/@listVersion) [Optional] (a)</p> <p>- nota: <i>this attribute should always be used coupled with “numberingOrg” and “listName”</i> (XPath GARDesRequest/shipInfo/packages/handlingChar/acsPack/acsPackCode/@listVersion) [Optional] (a)</p> <p>- nota: <i>this attribute should always be used coupled with “numberingOrg” and “listName”</i> (XPath GARDesRequest/GRbody/GRitem/yarnCode/art/@listVersion) [Optional]</p> <p>- nota: <i>this attribute should always be used coupled with “numberingOrg” and “listName”</i> (XPath GARDesRequest/GRbody/GRitem/acsCode/art/@listVersion) [Optional]</p> <p>- nota: <i>this attribute should always be used coupled with “numberingOrg” and “listName”</i> (XPath GARDesRequest/GRbody/GRitem/itemsList/qualityLevel/@listVersion) [Optional] (a)</p> <p>- nota: <i>this attribute should always be used coupled with “numberingOrg” and “listName”</i> (XPath GARDesRequest/GRbody/GRitem/yarnCode/color/@listVersion) [Optional]</p> <p>- nota: <i>this attribute should always be used coupled with “numberingOrg” and “listName”</i> (XPath GARDesRequest/GRbody/GRitem/texCode/art/@listVersion) [Optional]</p> <p>- nota: <i>this attribute should always be used coupled with “numberingOrg” and “listName”</i> (XPath GARDesRequest/GRbody/GRitem/texCode/pattern/@listVersion) [Optional]</p> <p>- nota: <i>this attribute should always be used coupled with “numberingOrg” and “listName”</i> (XPath GARDesRequest/GRbody/GRitem/texCode/color/@listVersion) [Optional]</p> <p>- nota: <i>this attribute should always be used coupled with “numberingOrg” and “listName”</i> (XPath GARDesRequest/GRbody/GRitem/garmentCode/garmentCodeA/art/@listVersion) [Optional]</p> <p>- nota: <i>this attribute should always be used coupled with “numberingOrg” and “listName”</i> (XPath GARDesRequest/GRbody/GRitem/acsCode/pattern/@listVersion) [Optional]</p> <p>- nota: <i>this attribute should always be used coupled with “numberingOrg” and “listName”</i> (XPath GARDesRequest/shipInfo/packages/handlingChar/garPack/garPackCode/@listVersion) [Optional] (a)</p> <p>- nota: <i>this attribute should always be used coupled with “numberingOrg” and “listName”</i></p>
@In	<p>Language code.</p> <p>- base type: string, cod. table: NT60 http://www.ebiz.enea.it/moda-ml/repository/codelist/v2018-1/gc_NT60.xml</p> <p>(XPath GARDesRequest/GRbody/GRitem/garmentCode/garmentCodeB/description/@In) [Optional] (N)</p> <p>(XPath GARDesRequest/shipInfo/packages/description/@In) [Optional] (N)</p> <p>(XPath GARDesRequest/GRbody/GRitem/acsCode/description/@In) [Optional] (N)</p> <p>(XPath GARDesRequest/GRbody/GRitem/garmentPartCode/description/@In) [Optional] (N)</p> <p>(XPath GARDesRequest/GRbody/GRitem/shipInfo/packages/handlingChar/handlingType/@In) [Optional] (Na)</p> <p>(XPath GARDesRequest/GRbody/GRitem/texCode/description/@In) [Optional] (N)</p> <p>(XPath GARDesRequest/GRbody/GRitem/acsCode/description/@In) [Optional] (N)</p> <p>(XPath GARDesRequest/GRbody/GRitem/garmentCode/garmentCodeA/description/@In) [Optional] (N)</p> <p>(XPath GARDesRequest/GRbody/GRitem/yarnCode/description/@In) [Optional] (N)</p> <p>(XPath GARDesRequest/shipInfo/packages/handlingChar/handlingType/@In) [Optional] (N)</p>

location	<p>specification of a location</p> <ul style="list-style-type: none"> - base type: string, max length: 40, (XPath GARDesRequest/trade/location) 0-1 - note: <i>place to which the INCOTERM applies</i>
@logo	<p>company logo (URL of the image jpeg or gif). It is recommended that the width of the image does not exceed 640 pixel.</p> <ul style="list-style-type: none"> - base type: string, max length: 255, (XPath GARDesRequest/GRheader/buyer/@logo) [Optional] (XPath GARDesRequest/GRheader/supplier/@logo) [Optional]
lotN	<p>lot number of a product or batch number of the raw material</p> <ul style="list-style-type: none"> - base type: string, max length: 15, (XPath GARDesRequest/GRbody/GRitem/lotN) 0-2
@LRI	<p>attribute usable to format a string according to a customized User rule (local rule)</p> <ul style="list-style-type: none"> - base type: string, cod. table: NT3 http://www.ebiz.enea.it/moda-ml/repository/codelist/v2018-1/gc_NT3.xml (XPath GARDesRequest/trade/location/@LRI) [Optional]
@mime	<p>the mime type of the binary object</p> <ul style="list-style-type: none"> - base type: normalizedString, (XPath GARDesRequest/GRheader/refDoc/attachment/binaryObject/@mime) [Optional] (N) (XPath GARDesRequest/GRbody/GRitem/refDoc/attachment/binaryObject/@mime) [Optional] (N)
mimeCode	<p>mime type of the external object</p> <ul style="list-style-type: none"> - base type: normalizedString, (XPath GARDesRequest/GRbody/GRitem/refDoc/attachment/externalReference/mimeCode) 0-1 (N) <hr/> <p>AAAA-WARNING! - text not AVAILABLE n. 245 - In=en (XPath GARDesRequest/GRheader/refDoc/attachment/externalReference/mimeCode) 0-1 (N)</p> <hr/> <p>AAAA-WARNING! - text not AVAILABLE n. 245 - In=en</p>
minItemsPerPackage	<p>the minimum quantity of items for the specified kind of package.</p> <ul style="list-style-type: none"> - base type: decimal, min inclusive: 0, (XPath GARDesRequest/GRbody/GRitem/shipInfo/packages/minItemsPerPackage) 0-1 (N) (XPath GARDesRequest/shipInfo/packages/minItemsPerPackage) 0-1 (N)
mod	<p>model number of the garment</p> <ul style="list-style-type: none"> - base type: string, max length: 15, (XPath GARDesRequest/GRbody/GRitem/garmentPartCode/mod) 1-1 - note: <i>when a garment component, it should be the code assigned to the garment article</i> (XPath GARDesRequest/GRbody/GRitem/garmentCode/garmentCodeB/mod) 1-1
msgDate	<p>date of issue of the present message (xml document), according to one of the patterns YYYY-MM-DD, YYYY-MM-DD:HH-MM or YYYY-WW.</p> <ul style="list-style-type: none"> - base type: string, (XPath GARDesRequest/GRheader/msgDate) 1-1
@msgfunction	<p>function performed by the present message with regards to the transmission</p> <ul style="list-style-type: none"> - base type: string, cod. table: NT18 http://www.ebiz.enea.it/moda-ml/repository/codelist/v2018-1/gc_NT18.xml (XPath GARDesRequest/@msgfunction) [Optional] [Default= OR]
msgID	<p>key identifier of the business document in the information system of the issuing Party. In case of more despatches of the same business document, it is unchanged.</p> <ul style="list-style-type: none"> - base type: string, max length: 35, (XPath GARDesRequest/GRheader/msgID) 0-1

msgN	<p>identification number given to the message (xml document) by its issuer. In case of more despatches of the same business document, it changes.</p> <p>- base type: string, max length: 35, (XPath GARDesRequest/GRheader/msgN) 1-1</p>
netWeight	<p>the net weight declared for transport or customs purpose</p> <p>- base type: decimal, min inclusive: 0, fraction digits: 2, (XPath GARDesRequest/GRbody/GRitem/shipInfo/packages/handlingChar/netWeight) 0-1 (XPath GARDesRequest/shipInfo/transInfo/netWeight) 0-1 (XPath GARDesRequest/shipInfo/packages/handlingChar/netWeight) 0-1 (p) (XPath GARDesRequest/shipInfo/actualPackageUnit/netWeight) 0-1 (XPath GARDesRequest/GRbody/GRitem/shipInfo/transInfo/netWeight) 0-1 (XPath GARDesRequest/GRbody/GRitem/shipInfo/actualPackageUnit/netWeight) 0-1</p>
note	<p>free text or structured (computer processing) note. For note structuring use the attributes "noteLabel" and "codelist"</p> <p>- base type: string, max length: 350, (XPath GARDesRequest/shipInfo/actualPackageUnit/note) 0-99 (XPath GARDesRequest/GRheader/note) 0-99 (XPath GARDesRequest/shipInfo/packages/handlingChar/note) 0-99 (XPath GARDesRequest/GRbody/GRitem/shipInfo/actualPackageUnit/note) 0-99 (XPath GARDesRequest/GRbody/GRitem/shipInfo/packages/handlingChar/note) 0-99 (XPath GARDesRequest/GRbody/GRitem/note) 0-99</p>
@noteLabel	<p>subject qualifier of a note</p> <p>- base type: string, max length: 35, (XPath GARDesRequest/GRbody/GRitem/shipInfo/packages/handlingChar/note/@noteLabel) [Optional]</p> <p>- nota: <i>must be used to qualify the subject of the note</i> (XPath GARDesRequest/GRbody/GRitem/shipInfo/actualPackageUnit/note/@noteLabel) [Optional]</p> <p>- nota: <i>must be used to qualify the subject of the note</i> (XPath GARDesRequest/GRheader/note/@noteLabel) [Optional]</p> <p>- nota: <i>must be used to qualify the subject of the note</i> (XPath GARDesRequest/shipInfo/packages/handlingChar/note/@noteLabel) [Optional]</p> <p>- nota: <i>must be used to qualify the subject of the note</i> (XPath GARDesRequest/shipInfo/actualPackageUnit/note/@noteLabel) [Optional]</p> <p>- nota: <i>must be used to qualify the subject of the note</i> (XPath GARDesRequest/GRbody/GRitem/note/@noteLabel) [Optional]</p> <p>- nota: <i>must be used to qualify the subject of the note</i></p>
@numberingOrg	<p>code specifying the organisation who has created or owns the coding or numbering system</p> <p>- base type: string, cod. table: NT6 http://www.ebiz.enea.it/moda-ml/repository/codelist/v2018-1/gc_NT6.xml (XPath GARDesRequest/GRbody/GRitem/csRange/garmentVariant/variantType/@numberingOrg) [Optional]</p> <p>- nota: <i>this attribute should be used either single or coupled with "listName" and "listVersion"</i> (XPath GARDesRequest/GRbody/GRitem/shipInfo/actualPackageUnit/packagesList/packageIdentification/serialN/@numberingOrg) [Optional]</p> <p>- nota: <i>here the issuer of the serial number must be specified (when different from the Supplier)</i> (XPath GARDesRequest/GRbody/GRitem/csRange/@numberingOrg) [Optional] (XPath GARDesRequest/GRbody/GRitem/shipInfo/packages/handlingChar/acsPack/acsPackCode/@numberingOrg) [Optional] (a)</p> <p>- nota: <i>this attribute should be used either single or coupled with "listName" and "listVersion"</i></p>

(XPath GARDesRequest/shipInfo/actualPackageUnit/packageModelCode/@numberingOrg) [Optional]

(XPath GARDesRequest/GRbody/GRitem/shipInfo/actualPackageUnit/packagesList/packageIdentification/packageN/@numberingOrg) [Optional]

(XPath GARDesRequest/GRheader/refDoc/attachment/fileName/@numberingOrg) [Optional] (a)

(XPath GARDesRequest/GRbody/GRitem/phaseCode/@numberingOrg) [Optional] (a)

- nota: *this attribute should be used either single or coupled with "listName" and "listVersion"*

(XPath GARDesRequest/shipInfo/actualPackageUnit/packageIdentification/packageN/@numberingOrg) [Optional]

(XPath GARDesRequest/shipInfo/actualPackageUnit/packageIdentification/serialN/@numberingOrg) [Optional]

- nota: *here the issuer of the serial number must be specified (when different from the Supplier)*

(XPath GARDesRequest/GRbody/GRitem/csRange/color/@numberingOrg) [Optional]

- nota: *this attribute should be used either single or coupled with "listName" and "listVersion"*

(XPath GARDesRequest/GRbody/GRitem/csRange/sizeMatrix/sizeRow/itemsList/itemIdentification/serialN/@numberingOrg) [Optional]

- nota: *here the issuer of the serial number must be specified (when different from the Supplier)*

(XPath GARDesRequest/GRbody/GRitem/lotN/@numberingOrg) [Optional]

(XPath GARDesRequest/GRbody/GRitem/thirdParty/id/@numberingOrg) [Optional]

(XPath GARDesRequest/GRbody/GRitem/csRange/sizeMatrix/sizeRow/itemsList/qualityLevel/@numberingOrg) [Optional] (a)

- nota: *this attribute should be used either single or coupled with "listName" and "listVersion"*

(XPath GARDesRequest/GRheader/buyer/additionalIdentifier/@numberingOrg) [Optional] (a)

- nota: *here the issuer of the identifier must be specified*

(XPath GARDesRequest/GRheader/buyer/id/@numberingOrg) [Optional]

(XPath GARDesRequest/GRbody/GRitem/itemsList/itemIdentification/serialN/@numberingOrg) [Optional]

- nota: *here the issuer of the serial number must be specified (when different from the Supplier)*

(XPath GARDesRequest/GRbody/GRitem/packageN/@numberingOrg) [Optional]

(XPath GARDesRequest/GRbody/GRitem/note/@numberingOrg) [Optional]

- nota: *must be used to specify the organization that created the list of codes used in "noteLabel"*

(XPath GARDesRequest/GRbody/GRitem/itemsList/qualityLevel/@numberingOrg) [Optional] (a)

- nota: *this attribute should be used either single or coupled with "listName" and "listVersion"*

(XPath GARDesRequest/shipInfo/packages/handlingChar/garPack/garPackCode/@numberingOrg) [Optional] (a)

- nota: *this attribute should be used either single or coupled with "listName" and "listVersion"*

(XPath GARDesRequest/shipInfo/packages/handlingChar/acsPack/acsPackCode/@numberingOrg) [Optional] (a)

- nota: *this attribute should be used either single or coupled with "listName" and "listVersion"*

(XPath GARDesRequest/GRbody/GRitem/shipInfo/packages/packageModelCode/@numberingOrg) [Optional]

(XPath GARDesRequest/GRbody/GRitem/shipInfo/actualPackageUnit/itemsList/qualityLevel/@numberingOrg) [Optional] (a)

- nota: *this attribute should be used either single or coupled with "listName" and "listVersion"*

(XPath GARDesRequest/GRbody/GRitem/csRange/drop/@numberingOrg) [Optional] (a)

- nota: *this attribute should be used either single or coupled with "listName" and "listVersion"*
 (XPath GARDesRequest/shipInfo/packages/packageN/@numberingOrg) [Optional]
 (XPath GARDesRequest/GRheader/docID/@numberingOrg) [Optional]

- nota: *here can be specified whose document numbering is used (e.g.: Client, Supplier, ..)*
 (XPath GARDesRequest/GRbody/GRitem/csRange/garmentVariant/variantCode/@numberingOrg) [Optional]

- nota: *this attribute should be used either single or coupled with "listName" and "listVersion"*
 (XPath GARDesRequest/shipInfo/packages/EPClist/EPC/@numberingOrg) [Optional]

(XPath GARDesRequest/GRbody/GRitem/csRange/sizeMatrix/sizeRow/size/@numberingOrg) [Optional] (a)

- nota: *this attribute should be used either single or coupled with "listName" and "listVersion"*
 (XPath GARDesRequest/GRbody/GRitem/shipInfo/actualPackageUnit/itemsList/itemIdentification/serialN/@numberingOrg) [Optional]

- nota: *here the issuer of the serial number must be specified (when different from the Supplier)*
 (XPath GARDesRequest/GRbody/GRitem/shipInfo/actualPackageUnit/note/@numberingOrg) [Optional]

- nota: *must be used to specify the organization that created the list of codes used in "noteLabel"*
 (XPath GARDesRequest/GRbody/GRitem/csRange/sizeMatrix/sizeRow/additionalComponentCode/@numberingOrg) [Optional] (a)

- nota: *this attribute should be used either single or coupled with "listName" and "listVersion"*
 (XPath GARDesRequest/GRbody/GRitem/csRange/sizeMatrix/sizeRow/drop/@numberingOrg) [Optional] (a)

- nota: *this attribute should be used either single or coupled with "listName" and "listVersion"*
 (XPath GARDesRequest/shipInfo/packages/handlingChar/note/@numberingOrg) [Optional]

- nota: *must be used to specify the organization that created the list of codes used in "noteLabel"*
 (XPath GARDesRequest/GRbody/GRitem/garmentPartCode/color/@numberingOrg) [Optional]

- nota: *this attribute should be used either single or coupled with "listName" and "listVersion"*
 (XPath GARDesRequest/GRbody/GRitem/shipInfo/actualPackageUnit/packageIdentification/packageN/@numberingOrg) [Optional]

(XPath GARDesRequest/GRbody/GRitem/shipInfo/packages/handlingChar/note/@numberingOrg) [Optional]

- nota: *must be used to specify the organization that created the list of codes used in "noteLabel"*
 (XPath GARDesRequest/GRbody/GRitem/garmentPartCode/added/@numberingOrg) [Optional]

- nota: *this attribute should be used either single or coupled with "listName" and "listVersion"*
 (XPath GARDesRequest/GRbody/GRitem/refDoc/attachment/fileName/@numberingOrg) [Optional]

(XPath GARDesRequest/GRbody/GRitem/additionalComponentCode/@numberingOrg) [Optional] (a)

- nota: *this attribute should be used either single or coupled with "listName" and "listVersion"*
 (XPath GARDesRequest/GRbody/GRitem/garmentPartCode/@numberingOrg) [Optional]

(XPath GARDesRequest/GRbody/GRitem/garmentPartCode/fabric/@numberingOrg) [Optional]

- nota: *this attribute should be used either single or coupled with "listName" and "listVersion"*
(XPath GARDesRequest/GRbody/GRitem/garmentPartCode/mod/@numberingOrg) [Optional]
(XPath GARDesRequest/GRbody/GRitem/refDoc/docID/@numberingOrg) [Optional]

- nota: *here can be specified whose document numbering is used (e.g.: Client, Supplier, ..)*
(XPath GARDesRequest/GRbody/GRitem/garmentCode/garmentCodeB/mod/@numberingOrg) [Optional]
(XPath GARDesRequest/GRbody/GRitem/garmentCode/garmentCodeB/fabric/@numberingOrg) [Optional]

- nota: *this attribute should be used either single or coupled with "listName" and "listVersion"*
(XPath GARDesRequest/GRbody/GRitem/shipInfo/actualPackageUnit/packageIdentification/serialN/@numberingOrg) [Optional]

- nota: *here the issuer of the serial number must be specified (when different from the Supplier)*
(XPath GARDesRequest/GRbody/GRitem/garmentCode/garmentCodeB/@numberingOrg) [Optional]
(XPath GARDesRequest/GRheader/thirdParty/id/@numberingOrg) [Optional]
(XPath GARDesRequest/GRbody/GRitem/garmentPartCode/size/@numberingOrg) [Optional] (a)

- nota: *this attribute should be used either single or coupled with "listName" and "listVersion"*
(XPath GARDesRequest/GRbody/GRitem/garmentCode/@numberingOrg) [Optional]

(XPath GARDesRequest/GRbody/GRitem/refDoc/season/@numberingOrg) [Optional] (a)

- nota: *this attribute should be used either single or coupled with "listName" and "listVersion"*
(XPath GARDesRequest/GRbody/GRitem/texCode/added/@numberingOrg) [Optional]

- nota: *this attribute should be used either single or coupled with "listName" and "listVersion"*
(XPath GARDesRequest/GRbody/GRitem/texCode/color/@numberingOrg) [Optional]

- nota: *this attribute should be used either single or coupled with "listName" and "listVersion"*
(XPath GARDesRequest/GRbody/GRitem/yarnCode/color/@numberingOrg) [Optional]

- nota: *this attribute should be used either single or coupled with "listName" and "listVersion"*
(XPath GARDesRequest/GRbody/GRitem/shipInfo/packages/EPClist/EPC/@numberingOrg) [Optional]
(XPath GARDesRequest/GRbody/GRitem/shipInfo/packages/packageN/@numberingOrg) [Optional]
(XPath GARDesRequest/GRbody/GRitem/texCode/art/@numberingOrg) [Optional]

- nota: *this attribute should be used either single or coupled with "listName" and "listVersion"*
(XPath GARDesRequest/GRbody/GRitem/texCode/@numberingOrg) [Optional]
(XPath GARDesRequest/GRbody/GRitem/texCode/pattern/@numberingOrg) [Optional]

- nota: *this attribute should be used either single or coupled with "listName" and "listVersion"*
(XPath GARDesRequest/GRbody/GRitem/yarnCode/added/@numberingOrg) [Optional]

- nota: *this attribute should be used either single or coupled with "listName" and "listVersion"*
(XPath GARDesRequest/GRheader/refDoc/docID/@numberingOrg) [Optional]

- nota: *here can be specified whose document numbering is used (e.g.: Client, Supplier, ..)*
(XPath GARDesRequest/GRbody/GRitem/yarnCode/art/@numberingOrg) [Optional]

- nota: *this attribute should be used either single or coupled with "listName" and "listVersion"*

(XPath GARDesRequest/GRbody/GRitem/yarnCode/@numberingOrg) [Optional] [Default= CL]

(XPath GARDesRequest/GRbody/GRitem/acsCode/added/@numberingOrg) [Optional]

- nota: *this attribute should be used either single or coupled with "listName" and "listVersion"*

(XPath GARDesRequest/GRbody/GRitem/acsCode/color/@numberingOrg) [Optional]

- nota: *this attribute should be used either single or coupled with "listName" and "listVersion"*

(XPath GARDesRequest/GRbody/GRitem/acsCode/art/@numberingOrg) [Optional]

- nota: *this attribute should be used either single or coupled with "listName" and "listVersion"*

(XPath GARDesRequest/GRbody/GRitem/acsCode/@numberingOrg) [Optional]

(XPath GARDesRequest/GRbody/GRitem/acsCode/pattern/@numberingOrg) [Optional]

- nota: *this attribute should be used either single or coupled with "listName" and "listVersion"*

(XPath GARDesRequest/GRheader/note/@numberingOrg) [Optional]

- nota: *must be used to specify the organization that created the list of codes used in "noteLabel"*

(XPath GARDesRequest/shipInfo/actualPackageUnit/itemsList/qualityLevel/@numberingOrg) [Optional] (a)

- nota: *this attribute should be used either single or coupled with "listName" and "listVersion"*

(XPath GARDesRequest/GRbody/GRitem/garmentCode/garmentCodeB/drop/@numberingOrg) [Optional] (a)

- nota: *this attribute should be used either single or coupled with "listName" and "listVersion"*

(XPath GARDesRequest/GRbody/GRitem/garmentCode/garmentCodeB/garmentVariant/variantCode/@numberingOrg) [Optional] (a)

- nota: *this attribute should be used either single or coupled with "listName" and "listVersion"*

(XPath GARDesRequest/GRbody/GRitem/garmentCode/garmentCodeB/garmentVariant/variantType/@numberingOrg) [Optional] (a)

- nota: *this attribute should be used either single or coupled with "listName" and "listVersion"*

(XPath GARDesRequest/shipInfo/actualPackageUnit/itemsList/itemIdentification/serialN/@numberingOrg) [Optional]

- nota: *here the issuer of the serial number must be specified (when different from the Supplier)*

(XPath GARDesRequest/GRbody/GRitem/garmentCode/garmentCodeB/size/@numberingOrg) [Optional] (a)

- nota: *this attribute should be used either single or coupled with "listName" and "listVersion"*

(XPath GARDesRequest/GRbody/GRitem/shipInfo/packages/handlingChar/garPack/garPackCode/@numberingOrg) [Optional] (a)

- nota: *this attribute should be used either single or coupled with "listName" and "listVersion"*

(XPath GARDesRequest/GRbody/GRitem/garmentCode/garmentCodeB/added/@numberingOrg) [Optional]

- nota: *this attribute should be used either single or coupled with "listName" and "listVersion"*

(XPath GARDesRequest/GRheader/refDoc/season/@numberingOrg) [Optional] (a)

- nota: *this attribute should be used either single or coupled with "listName" and "listVersion"*

(XPath GARDesRequest/GRbody/GRitem/garmentCode/garmentCodeA/art/@numberingOrg) [Optional]

- nota: *this attribute should be used either single or coupled with "listName" and "listVersion"*

(XPath GARDesRequest/GRheader/supplier/additionalIdentifier/@numberingOrg) [Optional] (a)

- nota: *here the issuer of the identifier must be specified*

	<p>(XPath GARDesRequest/GRbody/GRitem/garmentCode/garmentCodeB/color/@numberingOrg) [Optional]</p> <p>- nota: <i>this attribute should be used either single or coupled with "listName" and "listVersion"</i></p> <p>(XPath GARDesRequest/GRbody/GRitem/garmentCode/garmentCodeB/artGroup/@numberingOrg) [Optional]</p> <p>- nota: <i>this attribute should be used either single or coupled with "listName" and "listVersion"</i></p> <p>(XPath GARDesRequest/shipInfo/actualPackageUnit/packagesList/packageIdentification/packageN/@numberingOrg) [Optional]</p> <p>(XPath GARDesRequest/GRbody/GRitem/shipInfo/actualPackageUnit/packageModelCode/@numberingOrg) [Optional] (a)</p> <p>(XPath GARDesRequest/shipInfo/packages/packageModelCode/@numberingOrg) [Optional] (a)</p> <p>(XPath GARDesRequest/shipInfo/actualPackageUnit/note/@numberingOrg) [Optional]</p> <p>- nota: <i>must be used to specify the organization that created the list of codes used in "noteLabel"</i></p> <p>(XPath GARDesRequest/GRheader/supplier/id/@numberingOrg) [Optional]</p> <p>(XPath GARDesRequest/shipInfo/actualPackageUnit/packagesList/packageIdentification/serialN/@numberingOrg) [Optional]</p> <p>- nota: <i>here the issuer of the serial number must be specified (when different from the Supplier)</i></p>
package	<p>code specifying the type of transport package</p> <p>- base type: string, cod. table: T11</p> <p>http://www.ebiz.enea.it/moda-ml/repository/codelist/v2018-1/gc_T11.xml</p> <p>(XPath GARDesRequest/GRbody/GRitem/shipInfo/actualPackageUnit/package) 0-1 (p)</p> <p>(XPath GARDesRequest/GRbody/GRitem/shipInfo/packages/package) 1-1</p> <p>(XPath GARDesRequest/shipInfo/packages/package) 1-1</p> <p>(XPath GARDesRequest/shipInfo/actualPackageUnit/package) 0-1 (p)</p>
@packageContainerN	<p>reference usable to indicate the outer package containing this package</p> <p>- base type: string, max length: 40,</p> <p>(XPath GARDesRequest/shipInfo/packages/packageN/@packageContainerN) [Optional]</p> <p>(XPath GARDesRequest/GRbody/GRitem/shipInfo/actualPackageUnit/packagesList/packageIdentification/packageN/@packageContainerN) [Optional]</p> <p>(XPath GARDesRequest/shipInfo/actualPackageUnit/packagesList/packageIdentification/packageN/@packageContainerN) [Optional]</p> <p>(XPath GARDesRequest/GRbody/GRitem/shipInfo/packages/packageN/@packageContainerN) [Optional]</p> <p>(XPath GARDesRequest/shipInfo/actualPackageUnit/packageIdentification/packageN/@packageContainerN) [Optional]</p> <p>(XPath GARDesRequest/GRbody/GRitem/shipInfo/actualPackageUnit/packageIdentification/packageN/@packageContainerN) [Optional]</p>
@packageLevel	<p>level used to indicate the hierarchical structure of the packages (from outer to inner levels)</p> <p>- base type: positiveInteger, min inclusive: 1, max inclusive: 9,</p> <p>(XPath GARDesRequest/shipInfo/packages/@packageLevel) [Optional]</p> <p>- nota: <i>number fixing the level of the package in the transport structure (from inner to outer). Must either be used for all package types or not be used</i></p> <p>(XPath GARDesRequest/GRbody/GRitem/shipInfo/actualPackageUnit/@packageLevel) [Optional] (a)</p> <p>(XPath GARDesRequest/shipInfo/actualPackageUnit/@packageLevel) [Optional] (a)</p> <p>(XPath GARDesRequest/GRbody/GRitem/shipInfo/packages/@packageLevel) [Optional]</p>

	- nota: <i>number fixing the level of the package in the transport structure (from inner to outer). Must either be used for all package types or not be used</i>
packageModelCode	a code (eg a barcode) identifying the type of packaging - base type: string, (XPath GARDesRequest/GRbody/GRitem/shipInfo/packages/packageModelCode) 0-1 (N) (XPath GARDesRequest/shipInfo/actualPackageUnit/packageModelCode) 0-1 (N) (XPath GARDesRequest/GRbody/GRitem/shipInfo/actualPackageUnit/packageModelCode) 0-1 (N) (XPath GARDesRequest/shipInfo/packages/packageModelCode) 0-1 (N)
packageN	serial number used to identify a transport package - base type: string, max length: 40, (XPath GARDesRequest/shipInfo/actualPackageUnit/packagesList/packageIdentification/packageN) 1-1 (U) (XPath GARDesRequest/GRbody/GRitem/packageN) 0-unbounded (U) - note: <i>identifiers of the packages containing the items of this line</i> (XPath GARDesRequest/shipInfo/packages/packageN) 0-unbounded (U) - note: <i>here the serial no.s of the packages can be identified</i> (XPath GARDesRequest/GRbody/GRitem/shipInfo/actualPackageUnit/packagesList/packageIdentification/packageN) 1-1 (U) (XPath GARDesRequest/GRbody/GRitem/shipInfo/actualPackageUnit/packageIdentification/packageN) 1-1 (U) (XPath GARDesRequest/GRbody/GRitem/shipInfo/packages/packageN) 0-unbounded (U) - note: <i>here the serial no.s of the packages can be identified</i> (XPath GARDesRequest/shipInfo/actualPackageUnit/packageIdentification/packageN) 1-1 (U)
packageQty	quantity of the specified transport packages - base type: positiveInteger, (XPath GARDesRequest/shipInfo/packages/packageQty) 0-1 - note: <i>total for the type of package</i> (XPath GARDesRequest/GRbody/GRitem/shipInfo/packages/packageQty) 0-1 - note: <i>total for the type of package</i>
packageText	denomination of the type of transport package (text) - base type: string, max length: 80, (XPath GARDesRequest/shipInfo/packages/packageText) 1-1 (U) (XPath GARDesRequest/GRbody/GRitem/shipInfo/actualPackageUnit/packageText) 0-1 (U) (XPath GARDesRequest/shipInfo/actualPackageUnit/packageText) 0-1 (U) (XPath GARDesRequest/GRbody/GRitem/shipInfo/packages/packageText) 1-1 (U)
pattern	pattern/design number of the product, when not included in the article code - base type: string, max length: 15, (XPath GARDesRequest/GRbody/GRitem/acsCode/pattern) 0-1 (XPath GARDesRequest/GRbody/GRitem/texCode/pattern) 0-1
person	name of the contact person within a Party - base type: string, max length: 40, (XPath GARDesRequest/GRheader/thirdParty/person) 0-1 (XPath GARDesRequest/GRbody/GRitem/thirdParty/person) 0-1 (XPath GARDesRequest/GRheader/buyer/person) 0-1 (XPath GARDesRequest/GRheader/supplier/person) 0-1
phaseCode	Code that identifies a production phase of a fashion product. - base type: string, (XPath GARDesRequest/GRbody/GRitem/phaseCode) 0-1 (N) - note: <i>this element can refer to a phase declared in the commission order or to a advancement status from a specific code list</i>

@phone	<p>phone number of the contact person within a Party</p> <p>- base type: string, max length: 35,</p> <p>(XPath GARDesRequest/GRbody/GRitem/thirdParty/person/@phone) [Optional]</p> <p>(XPath GARDesRequest/GRheader/buyer/person/@phone) [Optional]</p> <p>(XPath GARDesRequest/GRheader/thirdParty/person/@phone) [Optional]</p> <p>(XPath GARDesRequest/GRheader/supplier/person/@phone) [Optional]</p>
pieceInnWrap1	<p>code specifying the type of inner wrapping/packing used for the fabric piece</p> <p>- base type: string, cod. table: T4</p> <p>http://www.ebiz.enea.it/moda-ml/repository/codelist/v2018-1/gc_T4.xml</p> <p>(XPath GARDesRequest/shipInfo/packages/handlingChar/piecePack/pieceInnWrap1) 1-1</p> <p>(XPath GARDesRequest/GRbody/GRitem/shipInfo/packages/handlingChar/piecePack/pieceInnWrap1) 1-1</p>
pieceInnWrap2	<p>code sub-specifying the type of inner wrapping/packing used for the fabric piece</p> <p>- base type: string, cod. table: T5</p> <p>http://www.ebiz.enea.it/moda-ml/repository/codelist/v2018-1/gc_T5.xml</p> <p>(XPath GARDesRequest/shipInfo/packages/handlingChar/piecePack/pieceInnWrap2) 0-1</p> <p>(XPath GARDesRequest/GRbody/GRitem/shipInfo/packages/handlingChar/piecePack/pieceInnWrap2) 0-1</p>
pieceOutWrap	<p>code specifying the type of outer wrapping or packing used for the fabric piece</p> <p>- base type: string, cod. table: T6</p> <p>http://www.ebiz.enea.it/moda-ml/repository/codelist/v2018-1/gc_T6.xml</p> <p>(XPath GARDesRequest/shipInfo/packages/handlingChar/piecePack/pieceOutWrap) 0-1</p> <p>(XPath GARDesRequest/GRbody/GRitem/shipInfo/packages/handlingChar/piecePack/pieceOutWrap) 0-1</p>
piecePackText	<p>free text specifying the type of wrapping or packing used for the fabric piece</p> <p>- base type: string, max length: 250,</p> <p>(XPath GARDesRequest/shipInfo/packages/handlingChar/piecePack/piecePackText) 1-1 (U)</p> <p>(XPath GARDesRequest/GRbody/GRitem/shipInfo/packages/handlingChar/piecePack/piecePackText) 1-1 (U)</p>
postCode	<p>code defining the postal zone</p> <p>- base type: string, max length: 10,</p> <p>(XPath GARDesRequest/GRheader/buyer/postCode) 0-1</p> <p>(XPath GARDesRequest/GRbody/GRitem/thirdParty/postCode) 0-1</p> <p>(XPath GARDesRequest/GRheader/supplier/postCode) 0-1</p> <p>(XPath GARDesRequest/GRheader/thirdParty/postCode) 0-1</p>
@progr	<p>progressive number in the sequence</p> <p>- base type: positiveInteger, min inclusive: 1,</p> <p>(XPath GARDesRequest/GRbody/GRitem/shipInfo/transInfo/@progr) [Optional] (N)</p> <p>- nota: <i>Indicates the position of the leg in a sequence of transport legs. If it is declared it must be in all the transInfo elements.</i></p> <p>(XPath GARDesRequest/shipInfo/transInfo/@progr) [Optional] (N)</p> <p>- nota: <i>Indicates the position of the leg in a sequence of transport legs. If it is declared it must be in all the transInfo elements.</i></p> <p>(XPath GARDesRequest/shipInfo/packages/fillingCriterion/@progr) [Optional] (Na)</p> <p>(XPath GARDesRequest/GRbody/GRitem/shipInfo/packages/fillingCriterion/@progr) [Optional] (N)</p>
qty	<p>net quantity of the article or object correlated, qualified by the function of the document (ordering, delivering, ..) and by the context</p> <p>- base type: decimal, min inclusive: 0, fraction digits: 2,</p> <p>(XPath GARDesRequest/GRbody/GRitem/csRange/sizeMatrix/sizeRow/qty) 0-1</p> <p>(XPath GARDesRequest/GRbody/GRitem/qty) 1-1</p>

qualityLevel	<p>the product quality level (first choice, second choice,...).</p> <p>- base type: string, (XPath GARDesRequest/GRbody/GRitem/csRange/sizeMatrix/sizeRow/itemsList/qualityLevel) 0-1 (N) (XPath GARDesRequest/shipInfo/actualPackageUnit/itemsList/qualityLevel) 0-1 (N) (XPath GARDesRequest/GRbody/GRitem/itemsList/qualityLevel) 0-1 (N) (XPath GARDesRequest/GRbody/GRitem/shipInfo/actualPackageUnit/itemsList/qualityLevel) 0-1 (N)</p>
@reelMat	<p>type of material of which a package for yarn is made</p> <p>- base type: string, cod. table: T30 http://www.ebiz.enea.it/moda-ml/repository/codelist/v2018-1/gc_T30.xml (XPath GARDesRequest/GRbody/GRitem/shipInfo/packages/handlingChar/yarnPack/yarnReel/@reelMat) [Optional] (XPath GARDesRequest/shipInfo/packages/handlingChar/yarnPack/yarnReel/@reelMat) [Optional]</p>
@reelType	<p>type of package used for a yarn product</p> <p>- base type: string, cod. table: T29 http://www.ebiz.enea.it/moda-ml/repository/codelist/v2018-1/gc_T29.xml (XPath GARDesRequest/shipInfo/packages/handlingChar/yarnPack/yarnReel/@reelType) [Required] (XPath GARDesRequest/GRbody/GRitem/shipInfo/packages/handlingChar/yarnPack/yarnReel/@reelType) [Required]</p>
@role	<p>Third Party role qualifier</p> <p>- base type: string, cod. table: NT2 http://www.ebiz.enea.it/moda-ml/repository/codelist/v2018-1/gc_NT2.xml (XPath GARDesRequest/GRheader/thirdParty/@role) [Required] (XPath GARDesRequest/GRbody/GRitem/thirdParty/@role) [Required]</p>
season	<p>sale season; defined as: season (1 crt) + year (4 crt) - season: S/S=1 A/W=2 Spring=3 Summer=4 Autumn=5 Winter=6: for more than four seasons use alphabetic sequence: 1st season=A 2nd season=B etc.etc.</p> <p>- base type: string, max length: 15, (XPath GARDesRequest/GRbody/GRitem/refDoc/season) 0-1 (A) - note: <i>here indicates the season to which the referenced document belongs</i> (XPath GARDesRequest/GRheader/refDoc/season) 0-1 (A) - note: <i>here indicates the season to which the referenced document belongs</i></p>
@sender	<p>qualifier that specifies the Party issuing of the document</p> <p>- base type: boolean, (XPath GARDesRequest/GRheader/supplier/@sender) [Optional] (a*) - nota: <i>This attribute is mandatory when the STYLESHEET must be used</i> (XPath GARDesRequest/GRheader/thirdParty/@sender) [Optional] (a*) - nota: <i>This attribute is mandatory when the STYLESHEET must be used</i> (XPath GARDesRequest/GRheader/buyer/@sender) [Optional] (a*) - nota: <i>This attribute is mandatory when the STYLESHEET must be used</i> (XPath GARDesRequest/GRbody/GRitem/thirdParty/@sender) [Optional] (a*) - nota: <i>This attribute is mandatory when the STYLESHEET must be used</i></p>
serialN	<p>serial number used for the identification of a physical unit</p> <p>- base type: string, max length: 250, (XPath GARDesRequest/shipInfo/actualPackageUnit/packagesList/packageIdentification/serialN) 0-9 (AU) - note: <i>multiple values of serialN are allowed in order to provide different representations of the serial identifier of the same package unit. Different instances of serialN must differ at least for one value of idQualifier or numberingOrg</i> (XPath GARDesRequest/GRbody/GRitem/shipInfo/actualPackageUnit/itemsList/itemIdentification/serialN) 1-9 (AU)</p> <hr/> <p>AAAA-WARNING! - text not AVAILABLE n. 245 - In=en - note: <i>multiple values of serialN are allowed for different representations of the serial identifier of the same product unit. Instances of serialN must differ at least for one value of numberingOrg and idQualifier.</i></p>

	<p>(XPath GARDesRequest/GRbody/GRitem/shipInfo/actualPackageUnit/package sList/packageIdentification/serialN) 0-9 (AU) - note: multiple values of serialN are allowed in order to provide different representations of the serial identifier of the same package unit. Different instances of serialN must differ at least for one value of idQualifier or numberingOrg</p> <p>(XPath GARDesRequest/shipInfo/actualPackageUnit/ packageIdentification/serialN) 0-9 (AU) - note: multiple values of serialN are allowed in order to provide different representations of the serial identifier of the same package unit. Different instances of serialN must differ at least for one value of idQualifier or numberingOrg</p> <p>(XPath GARDesRequest/GRbody/GRitem/itemsList/itemIdentification/serialN) 1 -9 (AU)</p> <hr/> <p>AAAA-WARNING! - text not AVAILABLE n. 245 - In=en - note: multiple values of serialN are allowed for different representations of the serial identifier of the same product unit. Instances of serialN must differ at least for one value of numberingOrg and idQualifier.</p> <p>(XPath GARDesRequest/GRbody/GRitem/csRange/sizeMatrix/ sizeRow/itemsList/itemIdentification/serialN) 1-9 (AU)</p> <hr/> <p>AAAA-WARNING! - text not AVAILABLE n. 245 - In=en - note: multiple values of serialN are allowed for different representations of the serial identifier of the same product unit. Instances of serialN must differ at least for one value of numberingOrg and idQualifier.</p> <p>(XPath GARDesRequest/GRbody/GRitem/shipInfo/actualPackageUnit/package Identification/serialN) 0-9 (AU) - note: multiple values of serialN are allowed in order to provide different representations of the serial identifier of the same package unit. Different instances of serialN must differ at least for one value of idQualifier or numberingOrg</p> <p>(XPath GARDesRequest/shipInfo/actualPackageUnit/ itemsList/itemIdentification/serialN) 1-9 (AU)</p> <hr/> <p>AAAA-WARNING! - text not AVAILABLE n. 245 - In=en - note: multiple values of serialN are allowed for different representations of the serial identifier of the same product unit. Instances of serialN must differ at least for one value of numberingOrg and idQualifier.</p>
size	<p>size number of a fashion product (knitwear, clothing, ..) - base type: string, max length: 15, (XPath GARDesRequest/GRbody/GRitem/garmentCode/ garmentCodeB/size) 0-1 (A) (XPath GARDesRequest/GRbody/GRitem/csRange/sizeMatrix/ sizeRow/size) 1-1 (A) (XPath GARDesRequest/GRbody/GRitem/garmentPartCode/size) 0-1 (A)</p>
@sizeSystemBase	<p>base of the size system - base type: string, cod. table: T423 http://www.ebiz.enea.it/moda-ml/repository/codelist/v2018-1/gc_T423.xml (XPath GARDesRequest/GRbody/GRitem/csRange/@sizeSystemBase) [Optional]</p>
@sizeSystemID	<p>the identifier of the size system. - base type: string, (XPath GARDesRequest/GRbody/GRitem/csRange/@sizeSystemID) [Optional]</p>
@sizeSystemNat	<p>nation or agency identifying the size system - base type: string, cod. table: T421 http://www.ebiz.enea.it/moda-ml/repository/codelist/v2018-1/gc_T421.xml (XPath GARDesRequest/GRbody/GRitem/csRange/@sizeSystemNat) [Optional]</p>
@sizeSystemSeg	<p>market segment identifying the size system - base type: string, cod. table: T422 http://www.ebiz.enea.it/moda-ml/repository/codelist/v2018-1/gc_T422.xml (XPath GARDesRequest/GRbody/GRitem/csRange/@sizeSystemSeg) [Optional]</p>
sortableIndicator	<p>It states if the item can be automatically sorted. - base type: boolean, (XPath GARDesRequest/GRbody/GRitem/shipInfo/packages/ handlingChar/sortableIndicator) 0-1 (N) (XPath GARDesRequest/shipInfo/packages/handlingChar/sortableIndicator) 0-1 (N)</p>

stackabilityLevel	This value indicates the level at which the item can be stacked. - base type: integer, (XPath GARDesRequest/shipInfo/packages/handlingChar/stackabilityLevel) 0-1 (N) (XPath GARDesRequest/GRbody/GRitem/shipInfo/packages/handlingChar/stackabilityLevel) 0-1 (N)
street	street and building number identifying a location - base type: string, max length: 80, (XPath GARDesRequest/GRbody/GRitem/thirdParty/street) 0-1 (XPath GARDesRequest/GRheader/supplier/street) 0-1 (XPath GARDesRequest/GRheader/thirdParty/street) 0-1 (XPath GARDesRequest/GRheader/buyer/street) 0-1
subCountry	short name or code of the sub-country entity - base type: string, max length: 9, (XPath GARDesRequest/GRheader/thirdParty/subCountry) 0-1 (XPath GARDesRequest/GRheader/supplier/subCountry) 0-1 (XPath GARDesRequest/GRheader/buyer/subCountry) 0-1 (XPath GARDesRequest/GRbody/GRitem/thirdParty/subCountry) 0-1
subDept	name or code of a contact department within a Party - base type: string, max length: 40, (XPath GARDesRequest/GRheader/buyer/subDept) 0-1 (N) (XPath GARDesRequest/GRheader/thirdParty/subDept) 0-1 (N) (XPath GARDesRequest/GRheader/supplier/subDept) 0-1 (N) (XPath GARDesRequest/GRbody/GRitem/thirdParty/subDept) 0-1 (N)
@TID	serial number wired into the RFID chip - base type: string, (XPath GARDesRequest/GRbody/GRitem/shipInfo/packages/EPCList/EPC/@TID) [Optional] (XPath GARDesRequest/shipInfo/packages/EPCList/EPC/@TID) [Optional]
transCondition	special condition of transport or special service requested to the Forwarder - base type: string, cod. table: T38 http://www.ebiz.enea.it/moda-ml/repository/codelist/v2018-1/gc_T38.xml (XPath GARDesRequest/GRbody/GRitem/shipInfo/transInfo/transCondition) 0-3 (XPath GARDesRequest/shipInfo/transInfo/transCondition) 0-3
transConditionText	free text description of the special condition of transport or special service requested to the Forwarder - base type: string, max length: 250, (XPath GARDesRequest/shipInfo/transInfo/transConditionText) 0-1 (U) (XPath GARDesRequest/GRbody/GRitem/shipInfo/transInfo/transConditionText) 0-1 (U)
transMeans	means of transport, in general or referred to a specific leg - base type: string, cod. table: T40 http://www.ebiz.enea.it/moda-ml/repository/codelist/v2018-1/gc_T40.xml (XPath GARDesRequest/GRbody/GRitem/shipInfo/transInfo/transMeans) 0-1 (XPath GARDesRequest/shipInfo/transInfo/transMeans) 0-1
transMode	way of transport, in general or referred to the specified leg - base type: string, cod. table: T8 http://www.ebiz.enea.it/moda-ml/repository/codelist/v2018-1/gc_T8.xml (XPath GARDesRequest/GRbody/GRitem/shipInfo/transInfo/transMode) 1-1 (XPath GARDesRequest/shipInfo/transInfo/transMode) 1-1
@transReason	reason for the transport - base type: string, cod. table: NT11 http://www.ebiz.enea.it/moda-ml/repository/codelist/v2018-1/gc_NT11.xml (XPath GARDesRequest/shipInfo/transInfo/@transReason) [Optional] (XPath GARDesRequest/GRbody/GRitem/shipInfo/transInfo/@transReason) [Optional]
@TRtype	type of Despatch request - base type: string, cod. table: NT9 http://www.ebiz.enea.it/moda-ml/repository/codelist/v2018-1/gc_NT9.xml

	(XPath GARDesRequest/@TRtype) [Optional] [Default= STD]
@uid	<p>unique element identifier within the xml document</p> <p>- base type: string,</p> <p>(XPath GARDesRequest/GRbody/GRitem/refDoc/attachment/@uid) [Optional]</p> <p>(XPath GARDesRequest/GRheader/refDoc/attachment/@uid) [Optional]</p>
@um	<p>specification of the unit of measure</p> <p>- base type: string, cod. table: NT7</p> <p>http://www.ebiz.enea.it/moda-ml/repository/codelist/v2018-1/gc_NT7.xml</p> <p>(XPath GARDesRequest/shipInfo/actualPackageUnit/grossWeight/@um) [Required]</p> <p>(XPath GARDesRequest/shipInfo/packages/packageDim/height/@um) [Required]</p> <p>(XPath GARDesRequest/shipInfo/actualPackageUnit/netWeight/@um) [Required]</p> <p>(XPath GARDesRequest/GRbody/GRitem/qty/@um) [Required]</p> <p>(XPath GARDesRequest/shipInfo/actualPackageUnit/volume/@um) [Required]</p> <p>(XPath GARDesRequest/GRbody/GRitem/shipInfo/actualPackageUnit/packageDim/length/@um) [Required]</p> <p>(XPath GARDesRequest/shipInfo/actualPackageUnit/packageDim/width/@um) [Required]</p> <p>(XPath GARDesRequest/GRbody/GRitem/shipInfo/actualPackageUnit/grossWeight/@um) [Required]</p> <p>(XPath GARDesRequest/GRbody/GRitem/shipInfo/actualPackageUnit/packageDim/height/@um) [Required]</p> <p>(XPath GARDesRequest/shipInfo/actualPackageUnit/packageDim/length/@um) [Required]</p> <p>(XPath GARDesRequest/GRbody/GRitem/shipInfo/actualPackageUnit/packageDim/width/@um) [Required]</p> <p>(XPath GARDesRequest/GRbody/GRitem/shipInfo/packages/handlingChar/yarnPack/yarnReel/yarnReelID/@um) [Required]</p> <p>(XPath GARDesRequest/shipInfo/packages/handlingChar/yarnPack/yarnReel/yarnReelQty/@um) [Required]</p> <p>(XPath GARDesRequest/shipInfo/packages/handlingChar/yarnPack/yarnReel/yarnReelH/@um) [Required]</p> <p>(XPath GARDesRequest/shipInfo/packages/handlingChar/volume/@um) [Required]</p> <p>(XPath GARDesRequest/GRbody/GRitem/shipInfo/packages/handlingChar/yarnPack/yarnReel/yarnReelQty/@um) [Required]</p> <p>(XPath GARDesRequest/GRbody/GRitem/shipInfo/transInfo/grossWeight/@um) [Required]</p> <p>(XPath GARDesRequest/GRbody/GRitem/shipInfo/transInfo/netWeight/@um) [Required]</p> <p>(XPath GARDesRequest/shipInfo/packages/itemsPerPackage/@um) [Required] (a)</p> <p>(XPath GARDesRequest/shipInfo/packages/minItemsPerPackage/@um) [Required] (a)</p> <p>(XPath GARDesRequest/GRbody/GRitem/shipInfo/packages/handlingChar/yarnPack/yarnReel/yarnReelH/@um) [Required]</p> <p>(XPath GARDesRequest/shipInfo/packages/handlingChar/netWeight/@um) [Required]</p> <p>(XPath GARDesRequest/shipInfo/packages/handlingChar/grossWeight/@um) [Required]</p> <p>(XPath GARDesRequest/shipInfo/packages/handlingChar/yarnPack/yarnReel/yarnReelID/@um) [Required]</p> <p>(XPath GARDesRequest/shipInfo/actualPackageUnit/packageDim/height/@um) [Required]</p> <p>(XPath GARDesRequest/GRbody/GRitem/shipInfo/packages/handlingChar/netWeight/@um) [Required]</p> <p>(XPath GARDesRequest/GRbody/GRitem/shipInfo/packages/sizeRow/qty/@um) [Required]</p> <p>(XPath GARDesRequest/GRbody/GRitem/shipInfo/packages/minItemsPerPackage/@um) [Required]</p> <p>(XPath GARDesRequest/GRbody/GRitem/shipInfo/packages/handlingChar/volume/@um) [Required]</p>

	<p>(XPath GARDesRequest/GRbody/GRitem/shipInfo/packages/packageDim/length/@um) [Required]</p> <p>(XPath GARDesRequest/GRbody/GRitem/shipInfo/packages/itemsPerPackage/@um) [Required]</p> <p>(XPath GARDesRequest/GRbody/GRitem/shipInfo/packages/handlingChar/grossWeight/@um) [Required]</p> <p>(XPath GARDesRequest/shipInfo/transInfo/netWeight/@um) [Required]</p> <p>(XPath GARDesRequest/shipInfo/transInfo/grossWeight/@um) [Required]</p> <p>(XPath GARDesRequest/GRbody/GRitem/shipInfo/packages/packageDim/width/@um) [Required]</p> <p>(XPath GARDesRequest/shipInfo/packages/packageDim/length/@um) [Required]</p> <p>(XPath GARDesRequest/GRbody/GRitem/shipInfo/actualPackageUnit/netWeight/@um) [Required]</p> <p>(XPath GARDesRequest/GRbody/GRitem/shipInfo/packages/packageDim/height/@um) [Required]</p> <p>(XPath GARDesRequest/GRbody/GRitem/shipInfo/actualPackageUnit/volume/@um) [Required]</p> <p>(XPath GARDesRequest/shipInfo/packages/packageDim/width/@um) [Required]</p>
uri	<p>Uniform Resource Identifier (URI) that identifies the external object as an Internet resource</p> <p>- base type: normalizedString,</p> <p>(XPath GARDesRequest/GRbody/GRitem/refDoc/attachment/externalReference/uri) 1-1 (N)</p> <p>(XPath GARDesRequest/GRheader/refDoc/attachment/externalReference/uri) 1-1 (N)</p>
@useProfile	<p>use profile to which the present document is compliant if it was agreed by the parties. It is suggested a URI with reference to the firm or the URL of the profile.</p> <p>- base type: string,</p> <p>(XPath GARDesRequest/@useProfile) [Optional]</p>
variantCode	<p>Code of variant used for fashion product.</p> <p>- base type: string,</p> <p>(XPath GARDesRequest/GRbody/GRitem/garmentCode/garmentCodeB/garmentVariant/variantCode) 1-1 (N)</p> <p>(XPath GARDesRequest/GRbody/GRitem/csRange/garmentVariant/variantCode) 1-1 (N)</p>
variantType	<p>Type of variant used for fashion product (examples: 'treatment', 'washing type', 'size class',...)</p> <p>- base type: string,</p> <p>(XPath GARDesRequest/GRbody/GRitem/csRange/garmentVariant/variantType) 1-1 (N)</p> <p>(XPath GARDesRequest/GRbody/GRitem/garmentCode/garmentCodeB/garmentVariant/variantType) 1-1 (N)</p>
@VAT	<p>VAT rate or code (DEPRECATED, use dtScheme element)</p> <p>- base type: string, cod. table: NT16</p> <p>http://www.ebiz.enea.it/moda-ml/repository/codelist/v2018-1/gc_NT16.xml</p> <p>(XPath GARDesRequest/GRbody/GRitem/lineN/@VAT) [Optional]</p> <p>- nota: <i>Deprecated, prefer dtScheme when available.</i></p> <p>(XPath GARDesRequest/GRbody/GRitem/thirdParty/@VAT) [Optional]</p> <p>(XPath GARDesRequest/GRheader/thirdParty/@VAT) [Optional]</p>
@version	<p>Dictionary version from which the instance has been created</p> <p>- base type: string, cod. table: NT100</p> <p>http://www.ebiz.enea.it/moda-ml/repository/codelist/v2018-1/gc_NT100.xml</p> <p>(XPath GARDesRequest/@version) [Optional] [Default= 2018-1]</p>
volume	<p>effective volume of a specified object</p> <p>- base type: decimal, min inclusive: 0, fraction digits: 2,</p> <p>(XPath GARDesRequest/shipInfo/packages/handlingChar/volume) 0-1 (p)</p>

	<p>(XPath GARDesRequest/GRbody/GRitem/shipInfo/packages/handlingChar/volume) 0-1</p> <p>(XPath GARDesRequest/shipInfo/actualPackageUnit/volume) 0-1</p> <p>(XPath GARDesRequest/GRbody/GRitem/shipInfo/actualPackageUnit/volume) 0-1</p>
width	<p>effective width of a specified object</p> <p>- base type: decimal, min inclusive: 0, fraction digits: 2,</p> <p>(XPath GARDesRequest/shipInfo/packages/packageDim/width) 0-1</p> <p>(XPath GARDesRequest/GRbody/GRitem/shipInfo/packages/packageDim/width) 0-1</p> <p>(XPath GARDesRequest/GRbody/GRitem/shipInfo/actualPackageUnit/packageDim/width) 0-1</p> <p>(XPath GARDesRequest/shipInfo/actualPackageUnit/packageDim/width) 0-1</p>
yarnConeAngle	<p>tapering angle of the cone on which a yarn is reeled</p> <p>- base type: positiveInteger,</p> <p>(XPath GARDesRequest/GRbody/GRitem/shipInfo/packages/handlingChar/yarnPack/yarnReel/yarnConeAngle) 0-1</p> <p>(XPath GARDesRequest/shipInfo/packages/handlingChar/yarnPack/yarnReel/yarnConeAngle) 0-1</p>
yarnOutWrap	<p>code specifying the type of outer wrapping or packing of a yarn</p> <p>- base type: string, cod. table: T33</p> <p>http://www.ebiz.enea.it/moda-ml/repository/codelist/v2018-1/gc_T33.xml</p> <p>(XPath GARDesRequest/shipInfo/packages/handlingChar/yarnPack/yarnOutWrap) 0-1</p> <p>(XPath GARDesRequest/GRbody/GRitem/shipInfo/packages/handlingChar/yarnPack/yarnOutWrap) 0-1</p>
yarnOutWrapText	<p>free text specifying the type of outer wrapping or packing of a yarn</p> <p>- base type: string, max length: 250,</p> <p>(XPath GARDesRequest/GRbody/GRitem/shipInfo/packages/handlingChar/yarnPack/yarnOutWrapText) 0-1 (U)</p> <p>(XPath GARDesRequest/shipInfo/packages/handlingChar/yarnPack/yarnOutWrapText) 0-1 (U)</p>
yarnReelD	<p>diameter of the bobbin used for a yarn product</p> <p>- base type: decimal, min inclusive: 0, fraction digits: 2,</p> <p>(XPath GARDesRequest/GRbody/GRitem/shipInfo/packages/handlingChar/yarnPack/yarnReel/yarnReelD) 0-1</p> <p>(XPath GARDesRequest/shipInfo/packages/handlingChar/yarnPack/yarnReel/yarnReelD) 0-1</p>
yarnReelH	<p>height of the bobbin used a yarn product</p> <p>- base type: decimal, min inclusive: 0, fraction digits: 2,</p> <p>(XPath GARDesRequest/shipInfo/packages/handlingChar/yarnPack/yarnReel/yarnReelH) 0-1</p> <p>(XPath GARDesRequest/GRbody/GRitem/shipInfo/packages/handlingChar/yarnPack/yarnReel/yarnReelH) 0-1</p>
yarnReelQty	<p>quantity of yarn (by weight or length) wound upon a bobbin</p> <p>- base type: decimal, min inclusive: 0, fraction digits: 2,</p> <p>(XPath GARDesRequest/GRbody/GRitem/shipInfo/packages/handlingChar/yarnPack/yarnReel/yarnReelQty) 0-2</p> <p>(XPath GARDesRequest/shipInfo/packages/handlingChar/yarnPack/yarnReel/yarnReelQty) 0-2</p>
yarnReelWrap	<p>type of wrapping in which a package of yarn is wrapped</p> <p>- base type: string, cod. table: T32</p> <p>http://www.ebiz.enea.it/moda-ml/repository/codelist/v2018-1/gc_T32.xml</p> <p>(XPath GARDesRequest/shipInfo/packages/handlingChar/yarnPack/yarnInWrap/yarnReelWrap) 1-1</p> <p>(XPath GARDesRequest/GRbody/GRitem/shipInfo/packages/handlingChar/yarnPack/yarnInWrap/yarnReelWrap) 1-1</p>

2.3 Suggested best practices

GARDesRequest/GRbody/GRitem/refDoc/docID (identification number of the referenced document SINCE 2008-1 ITS USE IN THE HEADER IS DISCOURAGED (REPLACED BY msgID))

numberingOrg indicates the role that produced the document identifier (it is allowed to declare two different ones -e.g. customer and supplier - with two docID with different numberingOrg

GARDesRequest/GRheader/refDoc/docID (identification number of the referenced document SINCE 2008-1 ITS USE IN THE HEADER IS DISCOURAGED (REPLACED BY msgID))

numberingOrg indicates the role that produced the document identifier (it is allowed to declare two different ones -e.g. customer and supplier - with two docID with different numberingOrg

GARDesRequest/GRbody/GRitem/refDoc/attachment/ externalReference/mimeType (mime type of the external object)

Use coding from IANA <http://www.iana.org/assignments/media-types/media-types.xml>

GARDesRequest/GRheader/refDoc/attachment/ externalReference/mimeType (mime type of the external object)

Use coding from IANA <http://www.iana.org/assignments/media-types/media-types.xml>

GARDesRequest/GRbody/GRitem/shipInfo/actualPackageUnit/itemsList/itemIdentification/serialN (serial number used for the identification of a physical unit)

in the case of garment with RFID for anti-counterfeiting, RFID EPCGlobal for logistics and NFC for the customer experience there should be three serial elements with pairs of attributes numberingOrg/idQualifier: "CL"/"RFID", "GS1"/"RFID", "CL"/"NFC".

GARDesRequest/GRbody/GRitem/itemsList/itemIdentification/serialN (serial number used for the identification of a physical unit)

in the case of garment with RFID for anti-counterfeiting, RFID EPCGlobal for logistics and NFC for the customer experience there should be three serial elements with pairs of attributes numberingOrg/idQualifier: "CL"/"RFID", "GS1"/"RFID", "CL"/"NFC".

GARDesRequest/GRbody/GRitem/csRange/sizeMatrix/ sizeRow/itemsList/itemIdentification/serialN (serial number used for the identification of a physical unit)

in the case of garment with RFID for anti-counterfeiting, RFID EPCGlobal for logistics and NFC for the customer experience there should be three serial elements with pairs of attributes numberingOrg/idQualifier: "CL"/"RFID", "GS1"/"RFID", "CL"/"NFC".

GARDesRequest/shipInfo/actualPackageUnit/ itemsList/itemIdentification/serialN (serial number used for the identification of a physical unit)

in the case of garment with RFID for anti-counterfeiting, RFID EPCGlobal for logistics and NFC for the customer experience there should be three serial elements with pairs of attributes numberingOrg/idQualifier: "CL"/"RFID", "GS1"/"RFID", "CL"/"NFC".

2.4 Enumeration tables

List of enumeration tables used in the XML document. You can find the corresponding codes at:
<http://www.ebiz-tcf.eu/moda-ml/imple/moda-ml-2018-1.asp?lingua=en&pag=6>

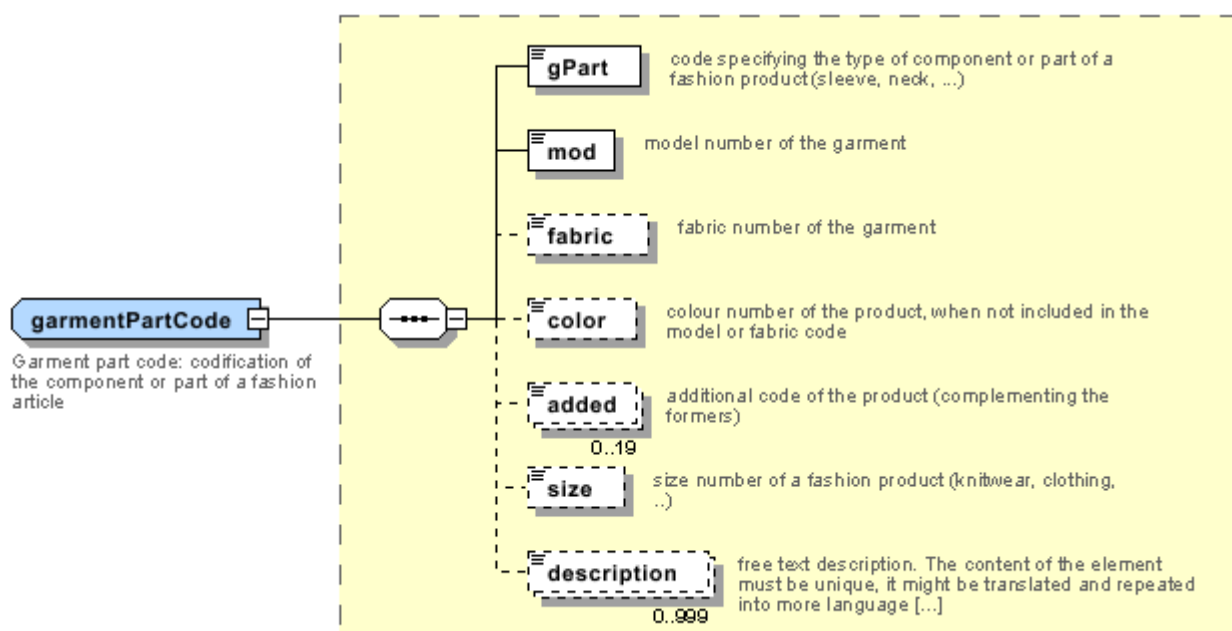
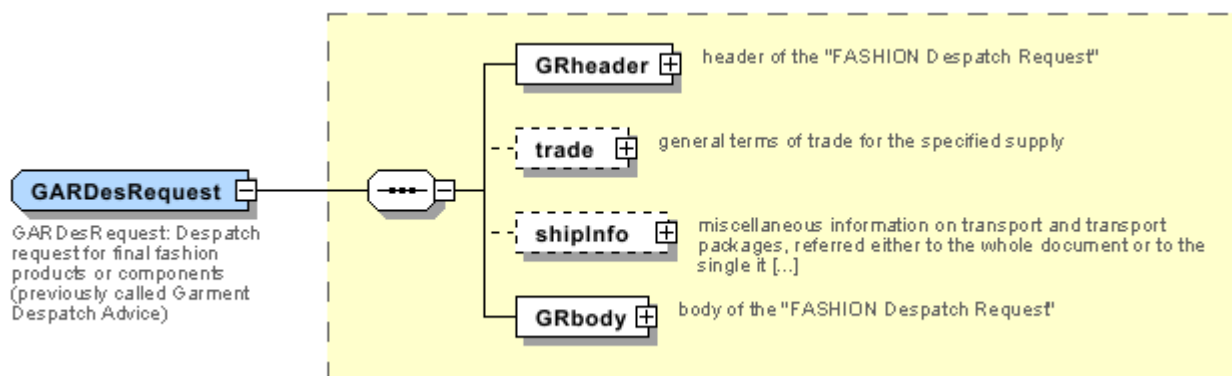
Legenda

- N: new table
- U: updated properties

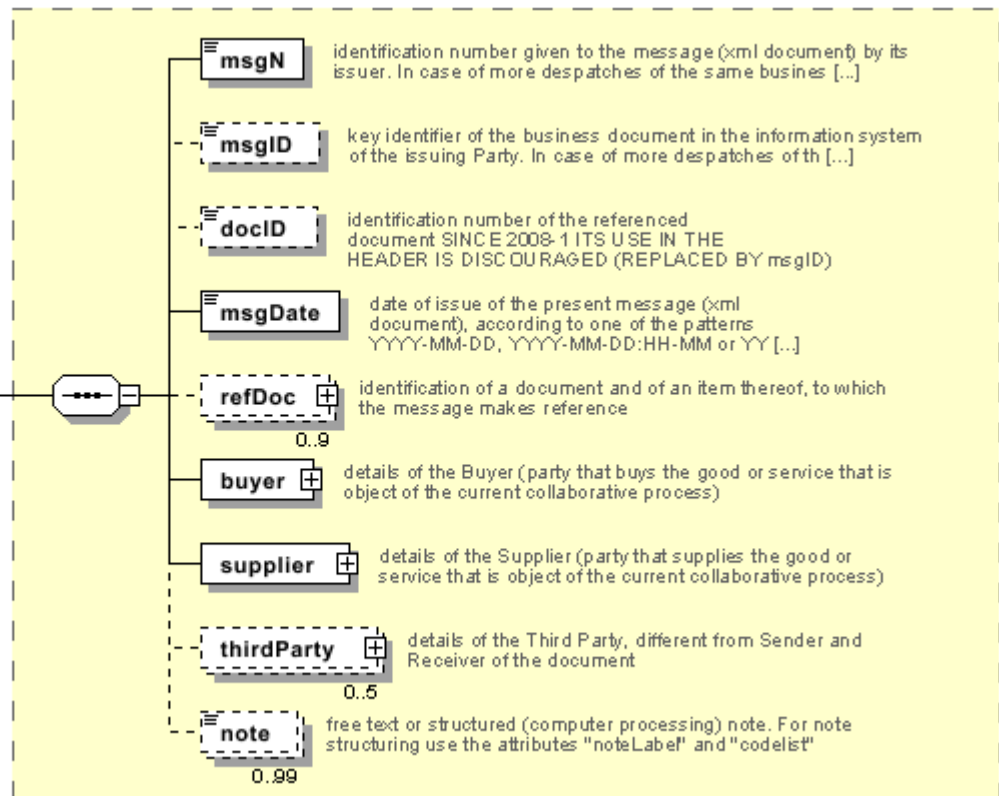
NT100 - eBIZ TCFUpstream version
NT11 - transport causal
NT16 - VAT rate or code
NT18 - message function
NT2 - third party qualifier
NT29 - format of a date
NT3 - data format
NT51 - Filling Criterion for Package homogeneity (N)
NT6 - coding system owner/issuer
NT60 - language, codes from ISO 639-1 (subset) (N)
NT7 - unit of measure (U)
NT9 - Despatch Request type
T10 - ISO3166 - Country
T11 - transport package type (U)
T21 - type of document
T29 - type of yarn package
T3 - terms of delivery
T30 - support of yarn package - material
T32 - yarn reel wrapping type
T33 - yarn outer packing
T38 - transport conditions
T4 - fabric piece inner packing (wrapping) 1
T40 - type of transport means
T421 - size system: nationality
T422 - size system: market segment
T423 - size system: base
T44 - additional code type
T48 - garment part type
T5 - fabric piece inner packing (wrapping) 2
T6 - fabric piece outer packing
T8 - Modes of Transport

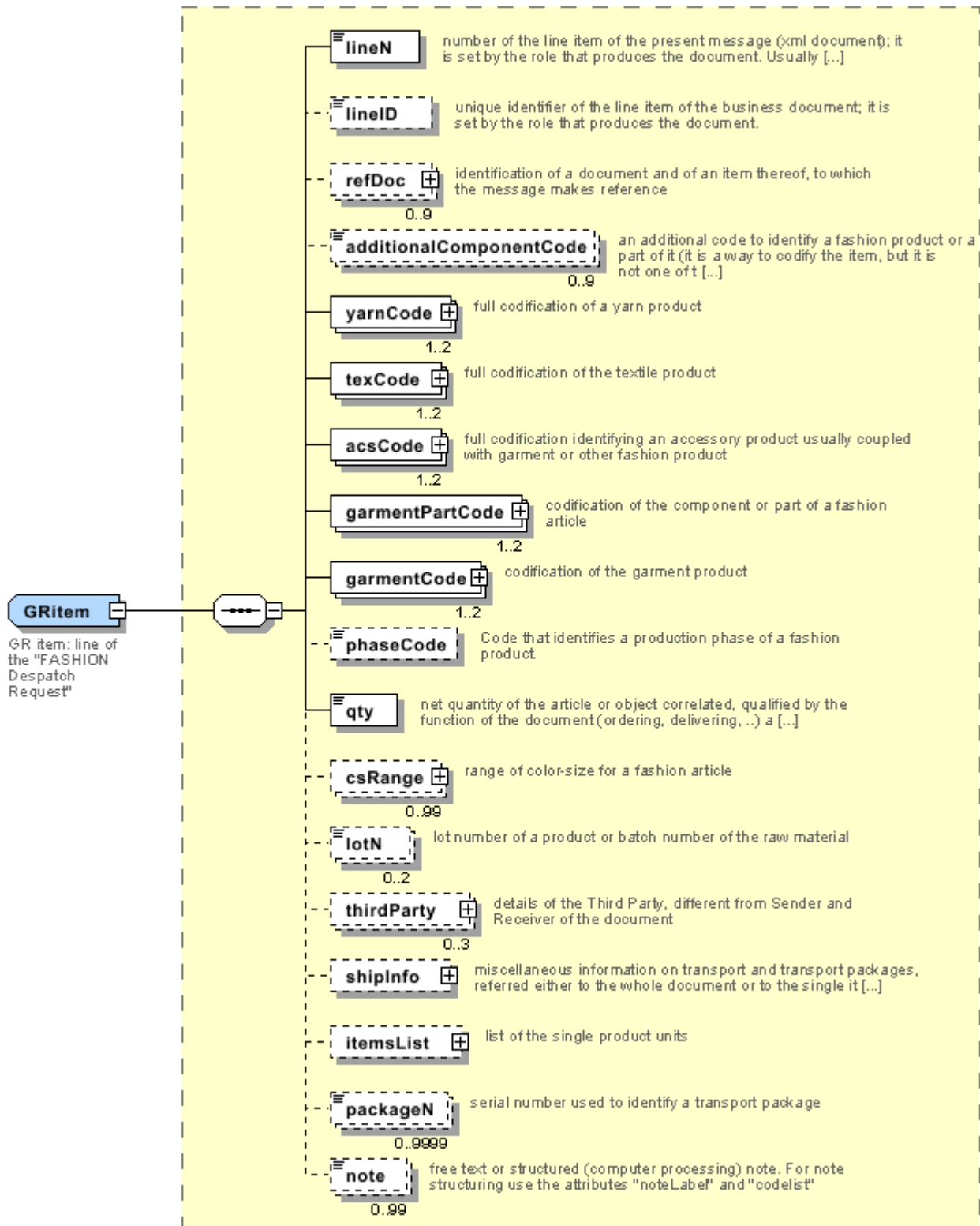
Annex A

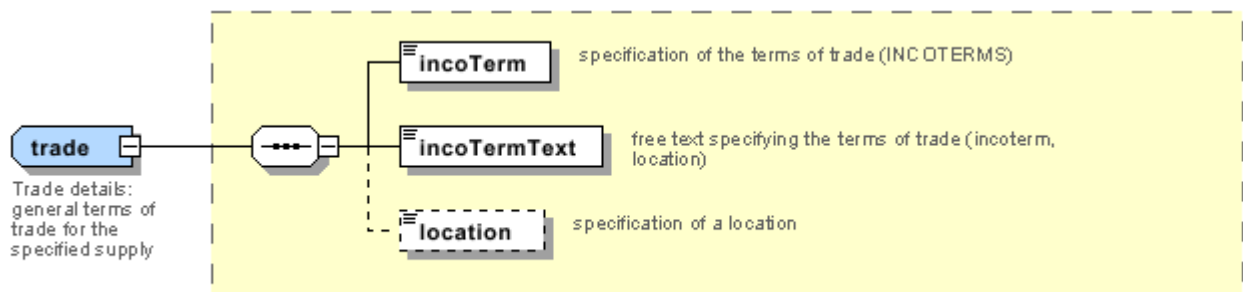
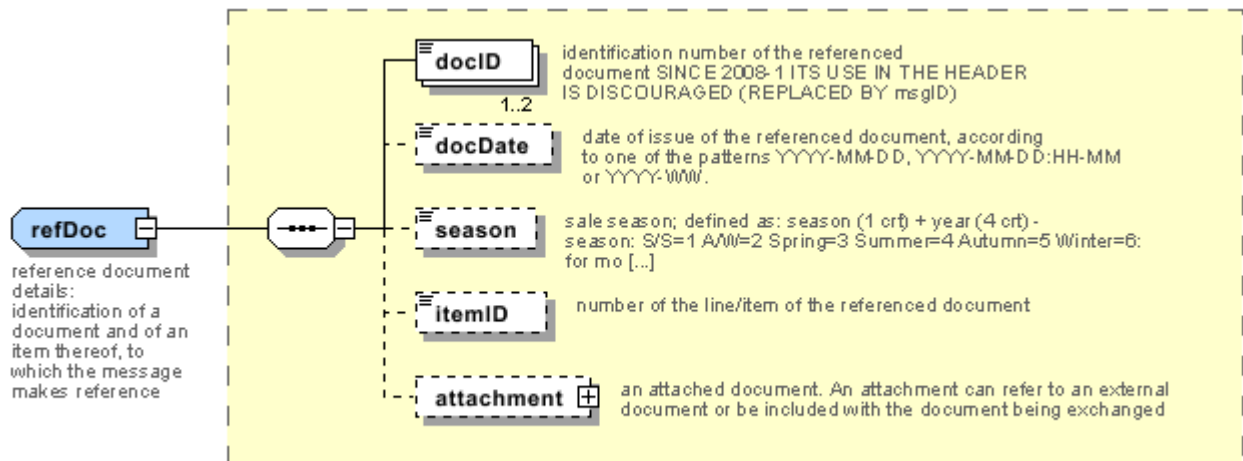
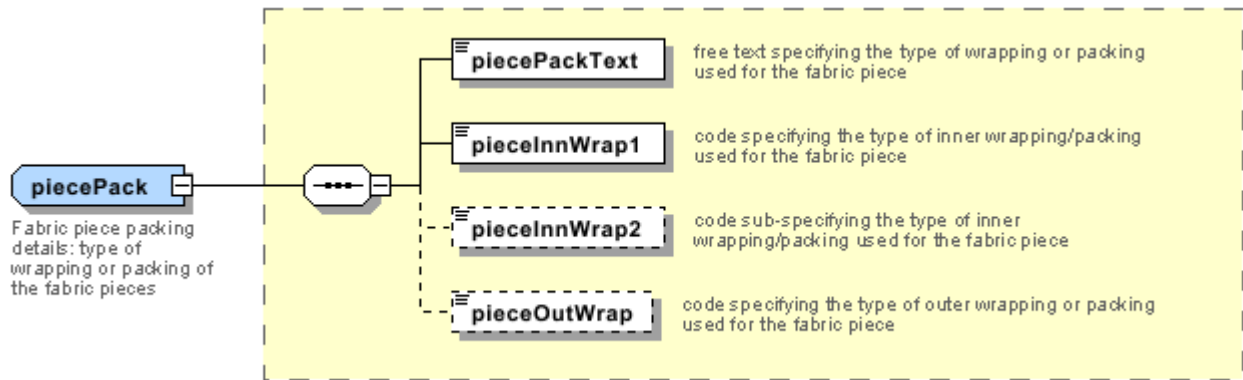
Representative images of the principal complex elements' structure.



GRheader
GR header: header of the "FASHION Despatch Request"







Annex B

NT100 - eBIZ TCFUpstream version

dictionary version

Agency name: eBIZ

tabella cod.: NT100

File codes list (Generic code): http://www.ebiz.enea.it/moda-ml/repository/codelist/v2018-1/gc_NT100.xml

Code	Description	Adoption note	Version status	Date of insertion
2013-1	v2013-1			01/07/2013
2018-1	v2018-1		(N)	04/11/2018
draft	draft		(N)	08/09/2017

NT11 - transport causal

reason for the transport

Agency name: eBIZ

tabella cod.: NT11

File codes list (Generic code): http://www.ebiz.enea.it/moda-ml/repository/codelist/v2018-1/gc_NT11.xml

Code	Description	Adoption note	Version status	Date of insertion
FOC	free of charge			
FRW	return from re-works			
FST	return from storage			
FWW	return from view			
FWK	return from works			
IST	in storage			
NWK	return non-worked			
RJC	return from rejection			
SEL	to sell			
STO	to storage			
VEW	to view			
WRK	to works			

NT16 - VAT rate or code

VAT rate or code (DEPRECATED, use dtScheme element)

tabella cod.: NT16

File codes list (Generic code): http://www.ebiz.enea.it/moda-ml/repository/codelist/v2018-1/gc_NT16.xml

NT18 - message function

function performed by the present message with regards to the transmission

Agency name: eBIZ

tabella cod.: NT18

File codes list (Generic code): http://www.ebiz.enea.it/moda-ml/repository/codelist/v2018-1/gc_NT18.xml

Code	Description	Adoption note	Version status	Date of insertion
CA	delete this document			01/07/2013
CP	copy			
OR	original			
RC	re-transmission for data correction			
RT	re-transmission			

NT2 - third party qualifier

Third Party role qualifier

Agency name: eBIZ

tabella cod.: NT2

File codes list (Generic code): http://www.ebiz.enea.it/moda-ml/repository/codelist/v2018-1/gc_NT2.xml

Code	Description	Adoption note	Version status	Date of insertion
AG	Sales Agent			
AU	Auditor		(N)	08/04/2019
CE	Certification authority		(N)	08/04/2019
CO	Quality Controller			
DC	Response to			
DF	Invoicee			
DI	Copy to (CC)			28/10/2014
DM	Consignee			
DP	Consignment address (Delivery Party)			
IM	Importer			

OR	Originator			10/09/2014
SC	Sub contractor		(N)	10/04/2019
SM	Service/ePlatform manager		(N)	08/04/2019
SP	Forwarder			
TX	Tax Representative			

NT29 - format of a date

format used for the date

Agency name: eBIZ

tabella cod.: NT29

File codes list (Generic code): http://www.ebiz.enea.it/moda-ml/repository/codelist/v2018-1/gc_NT29.xml

Code	Description	Adoption note	Version status	Date of insertion
D	YYYY-MM-DD			
M	YYYY-MM-DD:HH-MM			
W	YYYY-WW			

NT3 - data format

format of a string according to a customized User rule (local rule)

Agency name: eBIZ

tabella cod.: NT3

File codes list (Generic code): http://www.ebiz.enea.it/moda-ml/repository/codelist/v2018-1/gc_NT3.xml

Code	Description	Adoption note	Version status	Date of insertion
EN4	GS1-GLN			01/07/2013
MD	mutually agreed			

NT51 - Filling Criterion for Package homogeneity (N)

Filling Criterion for Package homogeneity

Agency name: eBIZ

tabella cod.: NT51

File codes list (Generic code): http://www.ebiz.enea.it/moda-ml/repository/codelist/v2018-1/gc_NT51.xml

Code	Description	Adoption note	Version status	Date of insertion
COL	Colour		(N)	08/09/2017
MOD	Model		(N)	08/09/2017
SIZ	Size		(N)	08/09/2017

NT6 - coding system owner/issuer

code specifying the organisation who has created or owns the coding or numbering system

Agency name: eBIZ

tabella cod.: NT6

File codes list (Generic code): http://www.ebiz.enea.it/moda-ml/repository/codelist/v2018-1/gc_NT6.xml

Code	Description	Adoption note	Version status	Date of insertion
CL	Customer/buyer			
CO	Quality Controller			
EB	eBIZ	replaces 'ML'	(N)	18/03/2019
EN	GS1 (ex-EAN International)			
ES	e-Stockflow			
FO	Supplier			
GS	GS1			01/07/2013
MF	VAT identifier		(U)	
ML	Moda-ML	DEPRECATED	(U)	
SP	Service Provider			

NT60 - language, codes from ISO 639-1 (subset) (N)

Agency name: eBIZ / ISO

tabella cod.: NT60

File codes list (Generic code): http://www.ebiz.enea.it/moda-ml/repository/codelist/v2018-1/gc_NT60.xml

Code	Description	Adoption note	Version status	Date of insertion
af	Afrikaans		(N)	31/01/2019
ar	Arabic		(N)	31/01/2019
be	Belarusian		(N)	31/01/2019
bg	Bulgarian		(N)	31/01/2019
bn	Bengali		(N)	31/01/2019

bo	Tibetan		(N)	31/01/2019
bs	Bosnian		(N)	31/01/2019
ca	Catalan, Valencian		(N)	31/01/2019
cs	Czech		(N)	31/01/2019
da	Danish		(N)	31/01/2019
de	German		(N)	31/01/2019
el	Greek, Modern (1453-)		(N)	31/01/2019
en	English		(N)	31/01/2019
eo	Esperanto		(N)	31/01/2019
es	Spanish, Castilian		(N)	31/01/2019
et	Estonian		(N)	31/01/2019
eu	Basque		(N)	31/01/2019
F	Female		(N)	15/04/2019
fa	Persian		(N)	31/01/2019
fi	Finnish		(N)	31/01/2019
fr	French		(N)	31/01/2019
ga	Irish		(N)	31/01/2019
gd	Gaelic, Scottish Gaelic		(N)	31/01/2019
gn	Guarani		(N)	31/01/2019
he	Hebrew		(N)	31/01/2019
hr	Croatian		(N)	31/01/2019
ht	Haitian, Haitian Creole		(N)	31/01/2019
hu	Hungarian		(N)	31/01/2019
hy	Armenian		(N)	31/01/2019
ia	Interlingua (International Auxiliary Language Association)		(N)	31/01/2019
id	Indonesian		(N)	31/01/2019
is	Icelandic		(N)	31/01/2019
it	Italian		(N)	31/01/2019
ja	Japanese		(N)	31/01/2019
jv	Javanese		(N)	31/01/2019
ka	Georgian		(N)	31/01/2019
km	Central Khmer		(N)	31/01/2019
ko	Korean		(N)	31/01/2019
ku	Kurdish		(N)	31/01/2019
lb	Luxembourgish, Letzeburgesch		(N)	31/01/2019

lo	Lao		(N)	31/01/2019
lt	Lithuanian		(N)	31/01/2019
lv	Latvian		(N)	31/01/2019
mg	Malagasy		(N)	31/01/2019
mk	Macedonian		(N)	31/01/2019
mn	Mongolian		(N)	31/01/2019
mt	Maltese		(N)	31/01/2019
nl	Dutch, Flemish		(N)	31/01/2019
no	Norwegian		(N)	31/01/2019
pl	Polish		(N)	31/01/2019
pt	Portuguese		(N)	31/01/2019
ro	Romanian, Moldavian, Moldovan		(N)	31/01/2019
ru	Russian		(N)	31/01/2019
se	Northern Sami		(N)	31/01/2019
sk	Slovak		(N)	31/01/2019
sl	Slovenian		(N)	31/01/2019
sm	Samoan		(N)	31/01/2019
so	Somali		(N)	31/01/2019
sq	Albanian		(N)	31/01/2019
sr	Serbian		(N)	31/01/2019
sv	Swedish		(N)	31/01/2019
sw	Swahili		(N)	31/01/2019
ta	Tamil		(N)	31/01/2019
th	Thai		(N)	31/01/2019
tr	Turkish		(N)	31/01/2019
uk	Ukrainian		(N)	31/01/2019
ur	Urdu		(N)	31/01/2019
uz	Uzbek		(N)	31/01/2019
vi	Vietnamese		(N)	31/01/2019
zh	Chinese		(N)	31/01/2019

NT7 - unit of measure (U)

specification of the unit of measure, it is a sub set of table Unit of Measure Code - UN/ECE REC 20 delivered by United Nations Economic Commission for Europe (UN/ECE)

Agency name: eBIZ / UN/ECE

tabella cod.: NT7

File codes list (Generic code): http://www.ebiz.enea.it/moda-ml/repository/codelist/v2018-1/gc_NT7.xml

Other link: <http://docs.oasis-open.org/ubl/os-UBL-2.1/cl/gc/default/UnitOfMeasureCode-2.1.gc#>

Code	Description	Adoption note	Version status	Date of insertion
CMK	square centimetre		(N)	20/12/2017
CMQ	cubic centimetre		(N)	20/12/2017
CMT	centimetre			
CNE	centiNewton			
CO2TON	ton of CO2		(N)	10/09/2014
COUPLES	couples			
DMQ	cubic decimetre			
E37	pixel		(N)	11/04/2018
GRM	gram			
HUR	hour			
INH	inch			
KGM	kilogram			
KMT	kilometer			
KWH	kilowatthours		(N)	10/09/2014
LBR	pound			
MIN	minute			
MMK	square millimetre		(N)	20/12/2017
MTK	square metre		(N)	20/12/2017
MTQ	cubic metre			
MTR	metre			
NMB	numero			
ONZ	ounce			
P1	percent			
PPM	parts per milion			
PZ	piece		(U)	
RPM	rounds per metre			
YRD	yard			

NT9 - Despatch Request type

type of Despatch request

Agency name: eBIZ

tabella cod.: NT9

File codes list (Generic code): http://www.ebiz.enea.it/moda-ml/repository/codelist/v2018-1/gc_NT9.xml

Code	Description	Adoption note	Version status	Date of insertion
CHG	change			
STD	standard			

T10 - ISO3166 - Country

code of the nation

Agency name: ISO

tabella cod.: T10

File codes list (Generic code): http://www.ebiz.enea.it/moda-ml/repository/codelist/v2018-1/gc_T10.xml

Table not printed: there are 239 elements, more than the maximum specified for printing: 99.

T11 - transport package type (U)

code specifying the type of package used for transport and delivery (subset of UN/ECE 8053 and UBL TransportEquipmentTypeCode-2.1)

Agency name: eBIZ

tabella cod.: T11

File codes list (Generic code): http://www.ebiz.enea.it/moda-ml/repository/codelist/v2018-1/gc_T11.xml

Other link: <http://docs.oasis-open.org/ubl/os-UBL-2.1/cl/gc/default/TransportEquipmentTypeCode-2.1.gc#>

Code	Description	Adoption note	Version status	Date of insertion
4A	box, steel		(U)	
4C	box, wood		(U)	
4G	Box, fibreboard		(N)	01/08/2018
4H	Box, plastic		(N)	01/08/2018
5H	Bag, woven plastic		(N)	01/08/2018
5L	Bag, textile		(N)	01/08/2018
5M	Bag, paper		(U)	
AJ	Cone		(N)	01/08/2018
BL	Bale, compressed		(N)	01/08/2018
BN	Bale, non-compressed		(N)	01/08/2018

BX	Box		(U)	
CI	Canister		(N)	01/08/2018
CL	Coil		(N)	01/08/2018
CN	Container, not otherwise specified as transport equipment		(N)	01/08/2018
CS	Case		(N)	01/08/2018
CT	Carton		(N)	01/08/2018
EC	Bag, plastic		(N)	01/08/2018
ED	Case, with pallet base		(N)	01/08/2018
EE	Case, with pallet base, wooden		(N)	01/08/2018
EF	Case, with pallet base, cardboard		(N)	01/08/2018
EG	Case, with pallet base, plastic		(N)	01/08/2018
EH	Case, with pallet base, metal		(N)	01/08/2018
FX	Bag, flexible container		(N)	01/08/2018
HN	Hanger		(N)	01/08/2018
NE	unpacked		(U)	
NF	Unpacked or unpackageged, single unit		(N)	01/08/2018
NG	Unpacked or unpackageged, multiple units		(N)	01/08/2018
OA	Pallet, CHEP 40 cm x 60 cm		(N)	01/08/2018
OB	Pallet, CHEP 80 cm x 120 cm		(N)	01/08/2018
OC	Pallet, CHEP 100 cm x 120 cm		(N)	01/08/2018
OD	Pallet, AS 4068-1993		(N)	01/08/2018
OE	Pallet, ISO T11		(N)	01/08/2018
PE	europallet (80x120)			
PX	pallet		(U)	
QS	box, plastic, solid		(U)	
RJ	Rack, clothing hanger		(N)	01/08/2018
RL	Reel		(N)	01/08/2018
SO	Spool		(N)	01/08/2018
TU	tube		(U)	
XD	bag, plastics film		(U)	
XK	bag,paper, multi-wall, water resistant		(U)	
ZZ	Mutually defined		(N)	01/08/2018

T21 - type of document

type or class to which the referenced document belongs

Agency name: eBIZ

tabella cod.: T21

File codes list (Generic code): http://www.ebiz.enea.it/moda-ml/repository/codelist/v2018-1/gc_T21.xml

Code	Description	Adoption note	Version status	Date of insertion
BOR	blanket order		(N)	01/02/2018
CAT	Price catalogue - tech sheet			
CEO	Certificate of origin		(N)	13/04/2018
CER	Certificate		(N)	13/04/2018
COC	colour card			
CRN	Credit note			08/09/2017
CTO	Checking order			01/07/2013
CTR	Contract		(U)	
CXF	CxF3 file			01/07/2013
DAD	Darn order			
DDT	ddt			
DEA	Despatch advise			
DER	Despatch request			
DR	Document Request			02/12/2014
FOR	Forecast			02/12/2014
GSO	Garment stock offer			
GSX	Garment stock offer change			
INV	Invoice			
KCC	Knitting-Clothing Commission Order			02/12/2014
KCI	Garment in Work Inventory Report			02/12/2014
M2M	Made to Measure Production Order			02/12/2014
MAS	Master marker			
MCI	Visual merchandising instruction		(N)	13/04/2018
OCH	Order change			
OFF	Offer			
ORD	Purchase order			
ORP	Order response			
OSR	order status request			
OSS	Offer status			02/12/2014

OST	Order status			
OUR	our reference			
QR	Quality Report			02/12/2014
RAI	Raw Material in Work Inventory Report			02/12/2014
RDC	Raw dyeing commission order			
RDH	Raw dyeing order change			
RDR	Raw dyeing order response			
REA	Receiving advise			
REQ	Request for Offer			
RET	Return			02/12/2014
RSC	Spinning commission order			
RSH	Spinning order change			
RSR	Spinning order response			
SCL	process sheet			
TFC	Textile dyeing-finishing commission order			
TFX	Textile Dyeing-Finishing Order Change			02/12/2014
TPC	Textile printing commission order			
TPX	Textile Printing Order Change			02/12/2014
TWI	Textile in work inventory			
VMI	visual merchandising instructions		(N)	01/02/2018
WAC	Warping commission order			
WEC	Weaving commission order			
YDC	Yarn dyeing commission order			
YDH	Yarn dyeing order change			
YDR	Yarn dyeing order response			
YTC	Twisting commission order			
YWI	Yarn in work inventory			

T29 - type of yarn package

type of package (roll-up) used for a yarn product

Agency name: eBIZ

tabella cod.: T29

File codes list (Generic code): http://www.ebiz.enea.it/moda-ml/repository/codelist/v2018-1/gc_T29.xml

Code	Description	Adoption note	Version status	Date of insertion
------	-------------	---------------	----------------	-------------------

CIL	bobbin			
CON	cone			
HNK	hank, skein			01/07/2013
MUF	muff, cake			01/07/2013
SPL	spool			
TUB	tube			
XCO	supercone			

T3 - terms of delivery

specification of the terms of trade (INCOTERMS)

Agency name: Incoterms

tabella cod.: T3

File codes list (Generic code): http://www.ebiz.enea.it/moda-ml/repository/codelist/v2018-1/gc_T3.xml

Cod e	Description	Adoption note	Versi on statu s	Date of insertio n
CF R	COST AND FREIGHT (named port of destination)			
CIF	COST, INSURANCE AND FREIGHT (named port of destination)			
CIP	CARRIAGE AND INSURANCE PAID (named place of destination)			
CP T	CARRIAGE PAID (named place of destination)			
DA F	DELIVERED AT FRONTIER (named place)	according to Incoterms® 2010 it is obsolete		08/12/2017
DA P	Delivered at Place of destination (named place of destination)	according to Incoterms® 2010		08/12/2017
DA T	Delivered at Terminal (named place of destination)	according to Incoterms® 2010		08/12/2017
DD P	DELIVERED DUTY PAID (named place of destination)			
DD U	DELIVERED DUTY UNPAID (named place of destination)	according to Incoterms® 2010 it is obsolete, use DAP		08/12/2017
DE Q	DELIVERED EX-QUAY (named port of destination)	according to Incoterms® 2010 it is obsolete		08/12/2017
DE S	DELIVERED EX-SHIP (named port of destination)	according to Incoterms® 2010 it is obsolete		08/12/2017

EX W	EX WORKS (named place)			
FA S	FREE ALONGSIDE SHIP (named port of shipment)			
FC A	FREE CARRIER (named place)			
FO B	FREE ON BOARD (named port of shipment)			

T30 - support of yarn package - material

type of material of which a package for yarn is made

Agency name: eBIZ

tabella cod.: T30

File codes list (Generic code): http://www.ebiz.enea.it/moda-ml/repository/codelist/v2018-1/gc_T30.xml

Code	Description	Adoption note	Version status	Date of insertion
CA	cartoon			
DY	for soft package dyeing			
MT	metallic			01/07/2013
PL	plastic			

T32 - yarn reel wrapping type

type of wrapping in which a package of yarn is wrapped

Agency name: eBIZ

tabella cod.: T32

File codes list (Generic code): http://www.ebiz.enea.it/moda-ml/repository/codelist/v2018-1/gc_T32.xml

Code	Description	Adoption note	Version status	Date of insertion
XA	without bag			
XB	paper bag			01/07/2013
XD	plastic film bag			

T33 - yarn outer packing

code specifying the type of outer wrapping or packing of a yarn

Agency name: eBIZ

tabella cod.: T33

File codes list (Generic code): http://www.ebiz.enea.it/moda-ml/repository/codelist/v2018-1/gc_T33.xml

Code	Description	Adoption note	Version status	Date of insertion
00				
CB	cartoon box			
CC	cartoon box 18 reels			
CD	cartoon box 36 reels			
XD	plastic film			

T38 - transport conditions

special condition of transport or special service requested to the Forwarder

tabella cod.: T38

File codes list (Generic code): http://www.ebiz.enea.it/moda-ml/repository/codelist/v2018-1/gc_T38.xml

Code	Description	Adoption note	Version status	Date of insertion
ACC	arrange customs clearance			
CAL	Carrier loads			
CAU	Carrier unloads			
CMR	CMR carnet			
FFN	freight forwarders national conditions			
FLD	special agreement for full loading			
NCC	do not arrange customs clearance			
PPB	packaging paid by Buyer			
PPS	packaging paid by Supplier			
PRO	proof of delivery			
RFR	return container free			
RPC	return container paid by Customer			
RPS	return container paid by Supplier			
SHL	Shipper loads			
SHU	Consignee unloads			

T4 - fabric piece inner packing (wrapping) 1

code specifying the type of inner wrapping/packing used for the fabric piece

Agency name: eBIZ

tabella cod.: T4

File codes list (Generic code): http://www.ebiz.enea.it/moda-ml/repository/codelist/v2018-1/gc_T4.xml

Code	Description	Adoption note	Version status	Date of insertion
A	Folded, whole width			
B	Folded, doubled			
C	Folded, tube products			
D	Spoiled, whole width			
E	Spoiled, doubled, pli: left			
F	Spoiled, doubled, pli: right			
G	Rolled, whole width, single item			
H	Rolled, whole width, several items			
I	Rolled, doubled			
J	Rolled, tube products			

T40 - type of transport means

means of transport, in general or referred to a specific leg

Agency name: eBIZ

tabella cod.: T40

File codes list (Generic code): http://www.ebiz.enea.it/moda-ml/repository/codelist/v2018-1/gc_T40.xml

Code	Description	Adoption note	Version status	Date of insertion
AIR	aircraft			
SHP	ship			
TRU	truck			
VAN	van			

T421 - size system: nationality

nation or agency identifying the size system

Agency name: eBIZ

tabella cod.: T421

File codes list (Generic code): http://www.ebiz.enea.it/moda-ml/repository/codelist/v2018-1/gc_T421.xml

Code	Description	Adoption note	Version status	Date of insertion
DE	Germany			
ES	Spain			
EU	Europe			
FR	France			
IT	Italy			
UK	United Kingdom			
US	USA			
XX	International			

T422 - size system: market segment

market segment identifying the size system

Agency name: eBIZ

tabella cod.: T422

File codes list (Generic code): http://www.ebiz.enea.it/moda-ml/repository/codelist/v2018-1/gc_T422.xml

Code	Description	Adoption note	Version status	Date of insertion
B	baby			
C	child			
K	kid			
M	man			
U	unisex			
W	woman			

T423 - size system: base

base of the size system

Agency name: eBIZ

tabella cod.: T423

File codes list (Generic code): http://www.ebiz.enea.it/moda-ml/repository/codelist/v2018-1/gc_T423.xml

Code	Description	Adoption note	Version status	Date of insertion
------	-------------	---------------	----------------	-------------------

1	arab numbers			
2	latin numbers			
3	symbols			
4	letters			
H	height			
L	length			
U	unic			
W	weight			

T44 - additional code type

qualifier of the additional coding of a product

Agency name: eBIZ

tabella cod.: T44

File codes list (Generic code): http://www.ebiz.enea.it/moda-ml/repository/codelist/v2018-1/gc_T44.xml

Code	Description	Adoption note	Version status	Date of insertion
CC	colour card			
CL	sales collection			
CO	company identification code		(N)	08/09/2017
DY	dye number			
LT	lot number			
MDI	Made in			08/09/2017
MS	manufacturing state			
PKG	packaging			09/09/2014
PL	product line			
RGB	RGB value			
SE	selvedge code			

T48 - garment part type

code specifying the type of component or part of a garment (sleeve, neck, ...)

Agency name: eBIZ

tabella cod.: T48

File codes list (Generic code): http://www.ebiz.enea.it/moda-ml/repository/codelist/v2018-1/gc_T48.xml

Code	Description	Adoption note	Version status	Date of insertion
BB	bottom back		(N)	01/08/2018
BF	bottom fore/front		(N)	01/08/2018
CO	collar		(N)	01/08/2018
CU	cuff		(N)	01/08/2018
DV	fore		(N)	
EM	embroidery		(N)	01/08/2018
OC	other component		(N)	01/08/2018
PO	pocket		(N)	01/08/2018
SC	back		(N)	
SL	sleeve		(N)	01/08/2018
TB	top back		(N)	01/08/2018
TF	top fore/front		(N)	01/08/2018

T5 - fabric piece inner packing (wrapping) 2

code specifying the sub-type of inner wrapping/packing used for the fabric piece

Agency name: eBIZ

tabella cod.: T5

File codes list (Generic code): http://www.ebiz.enea.it/moda-ml/repository/codelist/v2018-1/gc_T5.xml

Code	Description	Adoption note	Version status	Date of insertion
A	Open			
B	Folded once, not looped			
C	Folded twice, not looped			
H	Folded once, looped			
I	Folded twice, looped			
J	Without inner object, right side inside			
K	On carton or spooling plank, right side inside			
L	On spool (for pressure sensitive products), right side inside			
M	Without inner object, left side inside			
N	On carton or spooling plank, left side inside			
O	On spool (for pressure sensitive products), left side inside			
P	Without inner object, right side inside (deprecated code)			
Q	On carton, right side inside			

R	On wooden stick, right side inside			
S	Without inner object, left side inside (deprecated code)			
T	On carton, left side inside			
U	On wooden stick, left side inside			

T6 - fabric piece outer packing

code specifying the type of outer wrapping or packing used for the fabric piece

Agency name: eBIZ

tabella cod.: T6

File codes list (Generic code): http://www.ebiz.enea.it/moda-ml/repository/codelist/v2018-1/gc_T6.xml

Code	Description	Adoption note	Version status	Date of insertion
0	Not wrapped			
1	Totally wrapped			
2	Wrapped, one side open			
3	Wrapped, both sides open			
4	Wrapped, one side open, with show corner			
5	Wrapped in cartons			
6	Double wrapped			

T8 - Modes of Transport

way of transport, in general or referred to the specified leg

Agency name: eBIZ

tabella cod.: T8

File codes list (Generic code): http://www.ebiz.enea.it/moda-ml/repository/codelist/v2018-1/gc_T8.xml

Code	Description	Adoption note	Version status	Date of insertion
1	MARITIME TRANSPORT			
10	Courier			01/07/2013
2	RAIL TRANSPORT			
3	ROAD TRANSPORT			
4	AIR TRANSPORT			
5	MAIL			
6	AIR + SHIP TRANSPORT			

8	INLAND WATER TRANSPORT			
9	MODE UNKNOWN			

Annex C

New or changed elements towards previous version

Changes or added elements (changes in description excluded; changes in aggregation notes and best practice included): 230

Test Type	Tag	Status	Item type	Changes related to
Child	acsCode	UPD ATED	Accessory code	relationship with child: description Property: Cardmax Old value: 1 New value: 999
Element(E)	acsCode	UPD ATED	Accessory code	Property: class Old value: <i>garment accessory</i> New value: <i>accessory</i>
Child	acsCode	UPD ATED	Accessory code	relationship with child: description Property: Aggregation Note_English Old value: New value: <i>Product description</i>
Attribute	acsPackCode	NEW	Accessory packing code	Has NEW attribute: numbering organisation code
Attribute	acsPackCode	NEW	Accessory packing code	Has NEW attribute: code list reference
Attribute	acsPackCode	NEW	Accessory packing code	Has NEW attribute: code list name
Attribute	acsPackCode	NEW	Accessory packing code	Has NEW attribute: code list version
Element(E)	acsPackCode	UPD ATED	Accessory packing code	Property: class Old value: <i>garment accessory</i> New value: <i>accessory</i>
Element(E)	acsPack	UPD ATED	Accessory packing details	Property: class Old value: <i>garment accessory</i> New value: <i>accessory</i>
Element(E)	acsPackText	UPD ATED	Accessory packing text	Property: Length_Max Old value: 40 New value: 250
Element(E)	acsPackText	UPD ATED	Accessory packing text	Property: class Old value: <i>garment accessory</i> New value: <i>accessory</i>
Child	actualPackageUnit	NEW	actual package unit	Has NEW child of: transport package text

Child	actualPackageUnit	NEW	actual package unit	Has NEW child of: transport package dimensions
Child	actualPackageUnit	NEW	actual package unit	Has NEW child of: actual items per package
Attribute	actualPackageUnit	NEW	actual package unit	Has NEW attribute: package level identifier
Child	actualPackageUnit	NEW	actual package unit	Has NEW child of: volume measure
Child	actualPackageUnit	NEW	actual package unit	Has NEW child of: items list
Child	actualPackageUnit	NEW	actual package unit	Has NEW child of: packages list
Child	actualPackageUnit	NEW	actual package unit	Has NEW child of: package identification
Child	actualPackageUnit	NEW	actual package unit	Has NEW child of: package model code
Child	actualPackageUnit	NEW	actual package unit	Has NEW child of: general note
Child	actualPackageUnit	NEW	actual package unit	Has NEW child of: transport package code
Child	actualPackageUnit	NEW	actual package unit	Has NEW child of: net weight measure
Child	actualPackageUnit	NEW	actual package unit	Has NEW child of: gross weight measure
Element(l)	actualItemsPerPackage	NEW	actual items per package	
Element(l)	actualPackageUnit	NEW	actual package unit	
Attribute	additionalIdentifier	NEW	Additional Party Identifier	Has NEW attribute: numbering organisation code
Attribute	additionalIdentifier	NEW	Additional Party Identifier	Has NEW attribute: id Qualifier
Element(l)	additionalComponentCode	NEW	component Code	
Element(l)	additionalIdentifier	NEW	Additional Party Identifier	
Element(e)	art	UPDATED	article identifier	Property: Length_Max Old value: 25 New value: 80
Attribute	art	UPDATED	article identifier	Its attribute: code list reference

				Property: Aggregation Note_English Old value: <i>this attribute should be ALTERNATIVE to the others</i> New value: <i>at least one out of this attribute and "numberingOrg" should be set</i>
Element(l)	attachment	NEW	attachment	
Child	attachment	NEW	attachment	Has NEW child of: file name
Child	attachment	NEW	attachment	Has NEW child of: external reference
Child	attachment	NEW	attachment	Has NEW child of: binary object
Attribute	binaryObject	NEW	binary object	Has NEW attribute: encoding
Attribute	binaryObject	NEW	binary object	Has NEW attribute: mime
Attribute	binaryObject	NEW	binary object	Has NEW attribute: format
Attribute	binaryObject	NEW	binary object	Has NEW attribute: character set
Element(l)	binaryObject	NEW	binary object	
Child	buyer	NEW	Buyer (*)	Has NEW child of: Party identifier
Child	buyer	NEW	Buyer (*)	Has NEW child of: Additional Party Identifier
Attribute	buyer	NEW	Buyer (*)	Has NEW attribute: sender Party qualifier
Element(l)	characterSetCode	NEW	character set code	
Element(l)	characterSet	NEW	character set	
Child	csRange	NEW	color-size range	Has NEW child of: garment variant
Child	csRange	NEW	color-size range	Has NEW child of: drop identifier
Child	csRange	UPDATED	color-size range	relationship with child: articles colour identifier Property: Aggregation Note_English Old value: New value: <i>used only if not already specified in the article code</i>
Attribute	additionalComponentCode	NEW	component Code	Has NEW attribute: code list reference

Attrib	additional ComponentCode	NEW	component Code	Has NEW attribute: numbering organisation code
Attrib	additional ComponentCode	NEW	component Code	Has NEW attribute: code list version
Attrib	additional ComponentCode	NEW	component Code	Has NEW attribute: code list name
Element(E)	packageContainerN	UPDATED	container reference	Property: Length_Max Old value: 25 New value: 40
Element(E)	deliveryPlace	UPDATED	delivery place	Property: Length_Max Old value: 40 New value: 250
Attrib	description	NEW	description	Has NEW attribute: In
Element(E)	description	UPDATED	description	Property: Length_Max Old value: 70 New value: 250
Attrib	despatch Date	NEW	despatch date	Has NEW attribute: date format
Element(I)	despatch Date	NEW	despatch date	
Element(I)	despatch Place	NEW	despatch place	
Attrib	drop	NEW	drop identifier	Has NEW attribute: numbering organisation code
Attrib	drop	NEW	drop identifier	Has NEW attribute: code list name
Attrib	drop	NEW	drop identifier	Has NEW attribute: code list version
Element(E)	email	UPDATED	e-mail	Property: Length_Max Old value: 80 New value: 250
Element(I)	encoding Code	NEW	encoding code	
Element(I)	encoding	NEW	encoding	
Child	externalReference	NEW	external reference	Has NEW child of: uri
Child	externalReference	NEW	external reference	Has NEW child of: format code
Child	externalReference	NEW	external reference	Has NEW child of: character set code
Child	externalReference	NEW	external reference	Has NEW child of: mime code

Child	externalReference	NEW	external reference	Has NEW child of: encoding code
Element(l)	externalReference	NEW	external reference	
Attribute	fabric	UPD ATED	fabric identifier	Its attribute: code list reference Property: Aggregation Note_English Old value: <i>this attribute should be ALTERNATIVE to the others</i> New value: <i>at least one out of this attribute and "numberingOrg" should be set</i>
Element(e)	piecePackText	UPD ATED	fabric piece packing text	Property: Length_Max Old value: 40 New value: 250
Attribute	fileName	NEW	file name	Has NEW attribute: numbering organisation code
Element(l)	fileName	NEW	file name	
Attribute	fillingCriterion	NEW	filling criterion	Has NEW attribute: progressive number
Element(l)	fillingCriterion	NEW	filling criterion	
Element(l)	formatCode	NEW	format code	
Element(l)	format	NEW	format	
Child	GARDesRequest	NEW	GARDesRequest (*)	Has NEW child of: Trade details
Child	garmentCodeA	UPD ATED	garment code A	relationship with child: description Property: Cardmax Old value: 1 New value: 999
Child	garmentCodeA	UPD ATED	garment code A	relationship with child: description Property: Aggregation Note_English Old value: New value: <i>Product description</i>
Child	garmentCodeB	NEW	garment code B	Has NEW child of: drop identifier
Child	garmentCodeB	NEW	garment code B	Has NEW child of: garment variant
Child	garmentCodeB	UPD ATED	garment code B	relationship with child: description Property: Aggregation Note_English Old value: New value: <i>Product description</i>

Child	garmentCodeB	UPDATE	garment code B	relationship with child: description Property: Cardmax Old value: 1 New value: 999
Attribute	garPackCode	NEW	garment packing code	Has NEW attribute: code list name
Attribute	garPackCode	NEW	garment packing code	Has NEW attribute: numbering organisation code
Attribute	garPackCode	NEW	garment packing code	Has NEW attribute: code list version
Attribute	garPackCode	NEW	garment packing code	Has NEW attribute: code list reference
Child	garPack	NEW	garment packing	Has NEW child of: garment packing text
Child	garPack	NEW	garment packing	Has NEW child of: garment packing code
Child	garmentPartCode	NEW	Garment part code	Has NEW child of: articles additional identifier
Child	garmentPartCode	UPDATE	Garment part code	relationship with child: description Property: Cardmax Old value: 1 New value: 999
Child	garmentPartCode	UPDATE	Garment part code	relationship with child: description Property: Aggregation Note_English Old value: New value: <i>Product part description</i>
Child	garmentVariant	NEW	garment variant	Has NEW child of: variant code
Child	garmentVariant	NEW	garment variant	Has NEW child of: variant type
Element(l)	garmentVariant	NEW	garment variant	
Element(l)	garPackCode	NEW	garment packing code	
Element(l)	garPack	NEW	garment packing	
Element(l)	garPackText	NEW	garment packing text	

Attrib	note	UPDATED	general note	<p>Its attribute: numbering organisation code</p> <p>Property: Aggregation Note_English Old value: New value: <i>must be used to specify the organization that created the list of codes used in "noteLabel"</i></p>
Child	GRheader	UPDATED	GR header	<p>relationship with child: general note</p> <p>Property: Cardmax Old value: 19 New value: 99</p>
Child	GRheader	UPDATED	GR header	<p>relationship with child: Third Party</p> <p>Property: Cardmax Old value: 1 New value: 5</p>
Child	GRitem	NEW	GR item	Has NEW child of: Yarn product code
Child	GRitem	NEW	GR item	Has NEW child of: line identifier
Child	GRitem	NEW	GR item	Has NEW child of: Textiles product code
Child	GRitem	NEW	GR item	Has NEW child of: Accessory code
Child	GRitem	NEW	GR item	Has NEW child of: Garment part code
Child	GRitem	NEW	GR item	Has NEW child of: items list
Child	GRitem	NEW	GR item	Has NEW child of: package number
Child	GRitem	NEW	GR item	Has NEW child of: phase code
Child	GRitem	NEW	GR item	Has NEW child of: component Code
Child	GRitem	NEW	GR item	Has NEW child of: manufacture lot identifier
Child	GRitem	UPDATED	GR item	<p>relationship with child: general note</p> <p>Property: Cardmax Old value: 19 New value: 99</p>
Child	GRitem	UPDATED	GR item	<p>relationship with child: Third Party</p> <p>Property: Cardmax Old value: 1 New value: 3</p>

Child	GRitem	UPDATED	GR item	relationship with child: Garment product identifier Property: Grp_pos Old value: 0 New value: 5
Child	GRitem	UPDATED	GR item	relationship with child: Garment product identifier Property: Gruppo Old value: 0 New value: -1
Child	GRitem	UPDATED	GR item	relationship with child: Garment product identifier Property: Aggregation Note_English Old value: New value: <i>this element can have two instances only if the numbering organisations are different</i>
Attribute	artGroup	UPDATED	group identifier	Its attribute: code list reference Property: Aggregation Note_English Old value: <i>this attribute should be ALTERNATIVE to the others</i> New value: <i>at least one out of this attribute and "numberingOrg" should be set</i>
Child	handlingCharacter	NEW	handling Characteristics	Has NEW child of: general note
Child	handlingCharacter	NEW	handling Characteristics	Has NEW child of: garment packing
Child	handlingCharacter	NEW	handling Characteristics	Has NEW child of: yarn presentation details
Child	handlingCharacter	NEW	handling Characteristics	Has NEW child of: stackability Level
Child	handlingCharacter	NEW	handling Characteristics	Has NEW child of: gross weight measure
Child	handlingCharacter	NEW	handling Characteristics	Has NEW child of: net weight measure
Child	handlingCharacter	NEW	handling Characteristics	Has NEW child of: volume measure
Child	handlingCharacter	NEW	handling Characteristics	Has NEW child of: handling type

Child	handlingCharacteristics	NEW	handling Characteristics	Has NEW child of: Accessory packing details
Child	handlingCharacteristics	NEW	handling Characteristics	Has NEW child of: sortable Indicator
Child	handlingCharacteristics	NEW	handling Characteristics	Has NEW child of: Fabric piece packing details
Attribute	handlingType	NEW	handling type	Has NEW attribute: In
Element(l)	handlingCharacteristics	NEW	handling Characteristics	
Element(l)	handlingType	NEW	handling type	
Element(l)	idQualifier	NEW	id Qualifier	
Element(l)	isURL	NEW	is URL	
Child	itemIdentification	NEW	item identification	Has NEW child of: serial number
Element(l)	itemIdentification	NEW	item identification	
Child	itemsList	NEW	items list	Has NEW child of: quality level
Child	itemsList	NEW	items list	Has NEW child of: item identification
Attribute	itemsPerPackage	NEW	items per package	Has NEW attribute: unit of measure code
Element(l)	itemsList	NEW	items list	
Element(l)	itemsPerPackage	NEW	items per package	
Element(E)	legalName	UPDATE	Legal name	Property: Length_Max Old value: 80 New value: 250
Element(E)	itemID	UPDATE	line item number	Property: Length_Max Old value: 6 New value: 40
Attribute	lineN	UPDATE	line number	Its attribute: VAT rate Property: Aggregation Note_English Old value: New value: <i>Deprecated, prefer dtScheme when available.</i>
Element(l)	lineID	NEW	line identifier	

Element(l)	In	NEW	In	
Element(l)	mimeCode	NEW	mime code	
Element(l)	mime	NEW	mime	
Attribute	minItemsPerPackage	NEW	minimum items per package	Has NEW attribute: unit of measure code
Element(l)	minItemsPerPackage	NEW	minimum items per package	
Attribute	mod	UPD ATED	model identifier	Its attribute: code list reference Property: Aggregation Note_English Old value: <i>this attribute should be ALTERNATIVE to the others</i> New value: <i>at least one out of this attribute and "numberingOrg" should be set</i>
Attribute	mod	UPD ATED	model identifier	Its attribute: numbering organisation code Property: Aggregation Note_English Old value: <i>this attribute should be ALTERNATIVE to the others</i> New value:
Child	packageIdentification	NEW	package identification	Has NEW child of: package number
Child	packageIdentification	NEW	package identification	Has NEW child of: serial number
Attribute	packageModelCode	NEW	package model code	Has NEW attribute: numbering organisation code
Element(E)	packageNumber	UPD ATED	package number	Property: Length_Max Old value: 25 New value: 40
Element(l)	packageIdentification	NEW	package identification	
Element(l)	packageModelCode	NEW	package model code	
Child	packagesList	NEW	packages list	Has NEW child of: package identification
Element(l)	packagesList	NEW	packages list	
Attribute	phaseCode	NEW	phase code	Has NEW attribute: numbering organisation code

Attribute	phaseCode	NEW	phase code	Has NEW attribute: code list version
Attribute	phaseCode	NEW	phase code	Has NEW attribute: code list name
Attribute	phaseCode	NEW	phase code	Has NEW attribute: code list reference
Element(l)	phaseCode	NEW	phase code	
Element(l)	progr	NEW	progressive number	
Attribute	qualityLevel	NEW	quality level	Has NEW attribute: numbering organisation code
Attribute	qualityLevel	NEW	quality level	Has NEW attribute: code list reference
Attribute	qualityLevel	NEW	quality level	Has NEW attribute: code list version
Attribute	qualityLevel	NEW	quality level	Has NEW attribute: code list name
Element(l)	qualityLevel	NEW	quality level	
Child	refDoc	NEW	reference document details	Has NEW child of: attachment
Child	refDoc	UPDATED	reference document details	relationship with child: document identifier Property: BestPractice_English Old value: New value: <i>numberingOrg indicates the role that produced the document identifier (it is allowed to declare two different ones -e.g. customer and supplier - with two docID with different numberingOrg)</i>
Attribute	season	NEW	season identifier	Has NEW attribute: code list reference
Attribute	season	NEW	season identifier	Has NEW attribute: numbering organisation code
Attribute	season	NEW	season identifier	Has NEW attribute: code list name
Attribute	season	NEW	season identifier	Has NEW attribute: code list version
Attribute	serialIN	NEW	serial number	Has NEW attribute: id Qualifier
Element(E)	serialIN	UPDATED	serial number	Property: Length_Max Old value: 15 New value: 250
Child	shipInfo	NEW	shipping information	Has NEW child of: actual package unit

Child	shipInfo	UPDATED	shipping information	relationship with child: Transport packages details Property: Aggregation Note_English Old value: <i>this data group must be iterated for each type of package</i> New value: <i>this element must be iterated for each type of package</i>
Child	shipInfo	UPDATED	shipping information	relationship with child: Transport information Property: Cardmax Old value: 5 New value: 9
Attribute	size	NEW	size identifier	Has NEW attribute: numbering organisation code
Attribute	size	NEW	size identifier	Has NEW attribute: code list name
Attribute	size	NEW	size identifier	Has NEW attribute: code list version
Child	sizeRow	NEW	size row	Has NEW child of: items list
Child	sizeRow	NEW	size row	Has NEW child of: component Code
Child	sizeRow	UPDATED	size row	relationship with child: drop identifier Property: Aggregation Note_English Old value: New value: <i>DEPRECATED, anyhow it is used only if not already specified in the article code or csRange</i>
Element(l)	sortableIndicator	NEW	sortable Indicator	
Element(l)	stackabilityLevel	NEW	stackability Level	
Element(l)	subDept	NEW	department identifier	
Child	supplier	NEW	Supplier (*)	Has NEW child of: Party identifier
Child	supplier	NEW	Supplier (*)	Has NEW child of: Additional Party Identifier
Attribute	supplier	NEW	Supplier (*)	Has NEW attribute: sender Party qualifier
Element(E)	incoTermText	UPDATED	terms of trade text	Property: Length_Max Old value: 70 New value: 250
Child	texCode	UPDATED	Textiles product code	relationship with child: description Property: Aggregation Note_English Old value: New value: <i>Product description</i>

Child	texCode	UPD ATE D	Textiles pr oduct cod e	relationship with child: description Property: Cardmax Old value: 1 New value: 999
Child	thirdParty	NE W	Third Part y (*)	Has NEW child of: Party identifier
Attrib	thirdParty	NE W	Third Part y (*)	Has NEW attribute: sender Party qualifier
Elem(E)	transCond itionText	UPD ATE D	transport c ondition - t ext	Property: Length_Max Old value: 100 New value: 250
Child	transInfo	NE W	Transport i nformation	Has NEW child of: despatch place
Child	transInfo	NE W	Transport i nformation	Has NEW child of: despatch date
Child	transInfo	NE W	Transport i nformation	Has NEW child of: effective delivery date
Attrib	transInfo	NE W	Transport i nformation	Has NEW attribute: progressive number
Elem(E)	packageT ext	UPD ATE D	transport p ackage tex t	Property: Length_Max Old value: 40 New value: 80
Child	packages	NE W	Transport packages details	Has NEW child of: items per package
Child	packages	NE W	Transport packages details	Has NEW child of: minimum items per package
Child	packages	NE W	Transport packages details	Has NEW child of: description
Child	packages	NE W	Transport packages details	Has NEW child of: handling Characteristics
Child	packages	NE W	Transport packages details	Has NEW child of: package model code
Child	packages	NE W	Transport packages details	Has NEW child of: filling criterion
Child	packages	UPD ATE D	Transport packages details	relationship with child: epc list Property: Aggregation Note_English Old value: <i>here the RFID tags of the packages can be identified</i> New value: <i>this element is DEPRECATED, please use the specific el ements</i>

Attrib	uri	NEW	uri	Has NEW attribute: is URL
Elem(l)	uri	NEW	uri	
Attrib	variantCode	NEW	variant code	Has NEW attribute: code list version
Attrib	variantCode	NEW	variant code	Has NEW attribute: code list name
Attrib	variantCode	NEW	variant code	Has NEW attribute: numbering organisation code
Attrib	variantCode	NEW	variant code	Has NEW attribute: code list reference
Attrib	variantType	NEW	variant type	Has NEW attribute: code list reference
Attrib	variantType	NEW	variant type	Has NEW attribute: code list version
Attrib	variantType	NEW	variant type	Has NEW attribute: code list name
Attrib	variantType	NEW	variant type	Has NEW attribute: numbering organisation code
Elem(l)	variantCode	NEW	variant code	
Elem(l)	variantType	NEW	variant type	
Elem(E)	yarnOutwrapText	UPDATE	yarn outer packing text	Property: Length_Max Old value: 40 New value: 250
Child	yarnCode	UPDATE	Yarn product code	relationship with child: description Property: Aggregation Note_English Old value: New value: <i>Product description</i>
Child	yarnCode	UPDATE	Yarn product code	relationship with child: description Property: Cardmax Old value: 1 New value: 999

Annex D

New or changed tables and codes towards previous version

Changes or added items (changes in CodeListAgencyName excluded; changes in adoption notes and code description included): 148

Test Type	Status	Table code	Table description	Code	Change description
Table	UPD ATE D	NT 10 0	eBIZ TCFUpstream version		Description_English Old value: <i>eBIZ Moda-ML version</i> New value: <i>eBIZ TCFUpstream version</i>
Code	NEW	NT 10 0		2018-1 (v2018-1)	
Code	NEW	NT 10 0		draft (draft)	
Table	UPD ATE D	NT 16	VAT rate or code		Generalities Old value: <i>VAT rate or code (deprecated, use dtScheme element)</i> New value: <i>VAT rate or code (DEPRECATED, use dtScheme element)</i>
Code	NEW	NT 2		AU (Auditor)	
Code	NEW	NT 2		CE (Certification authority)	
Code	NEW	NT 2		SC (Sub contractor)	
Code	NEW	NT 2		SM (Service/ePlatform manager)	
Table	NEW	NT 51	Filling Criterion for Package homogeneity		
Code	NEW	NT 51		COL (Colour)	
Code	NEW	NT 51		MOD (Model)	
Code	NEW	NT 51		SIZ (Size)	
Code	NEW	NT 6		EB (eBIZ)	

Code	UPDATE	NT6		<i>ML</i> (DEPRECATED)	adoption_note Old value: New value: <i>DEPRECATED</i>
Table	NEW	NT60	language, codes from ISO 639-1 (subset)		
Code	NEW	NT60		<i>F</i> (Female)	
Code	NEW	NT60		<i>af</i> (Afrikaans)	
Code	NEW	NT60		<i>ar</i> (Arabic)	
Code	NEW	NT60		<i>be</i> (Belarusian)	
Code	NEW	NT60		<i>bg</i> (Bulgarian)	
Code	NEW	NT60		<i>bn</i> (Bengali)	
Code	NEW	NT60		<i>bo</i> (Tibetan)	
Code	NEW	NT60		<i>bs</i> (Bosnian)	
Code	NEW	NT60		<i>ca</i> (Catalan, Valencian)	
Code	NEW	NT60		<i>cs</i> (Czech)	
Code	NEW	NT60		<i>da</i> (Danish)	
Code	NEW	NT60		<i>de</i> (German)	
Code	NEW	NT60		<i>el</i> (Greek, Modern (1453-))	
Code	NEW	NT60		<i>en</i> (English)	
Code	NEW	NT60		<i>eo</i> (Esperanto)	
Code	NEW	NT60		<i>es</i> (Spanish, Castilian)	
Code	NEW	NT60		<i>et</i> (Estonian)	
Code	NEW	NT60		<i>eu</i> (Basque)	
Code	NEW	NT60		<i>fa</i> (Persian)	

Co de	NE W	NT 60		<i>fi</i> (Finnish)	
Co de	NE W	NT 60		<i>fr</i> (French)	
Co de	NE W	NT 60		<i>ga</i> (Irish)	
Co de	NE W	NT 60		<i>gd</i> (Gaelic, Scottish Gaelic)	
Co de	NE W	NT 60		<i>gn</i> (Guarani)	
Co de	NE W	NT 60		<i>he</i> (Hebrew)	
Co de	NE W	NT 60		<i>hr</i> (Croatian)	
Co de	NE W	NT 60		<i>ht</i> (Haitian, Haitian Creole)	
Co de	NE W	NT 60		<i>hu</i> (Hungarian)	
Co de	NE W	NT 60		<i>hy</i> (Armenian)	
Co de	NE W	NT 60		<i>ia</i> (Interlingua (International Auxiliary Language Association))	
Co de	NE W	NT 60		<i>id</i> (Indonesian)	
Co de	NE W	NT 60		<i>is</i> (Icelandic)	
Co de	NE W	NT 60		<i>it</i> (Italian)	
Co de	NE W	NT 60		<i>ja</i> (Japanese)	
Co de	NE W	NT 60		<i>ju</i> (Javanese)	
Co de	NE W	NT 60		<i>ka</i> (Georgian)	
Co de	NE W	NT 60		<i>km</i> (Central Khmer)	
Co de	NE W	NT 60		<i>ko</i> (Korean)	
Co de	NE W	NT 60		<i>ku</i> (Kurdish)	
Co de	NE W	NT 60		<i>lb</i> (Luxembourgish, Letzeburgesch)	

Co de	NE W	NT 60		<i>lo</i> (Lao)	
Co de	NE W	NT 60		<i>lt</i> (Lithuanian)	
Co de	NE W	NT 60		<i>lv</i> (Latvian)	
Co de	NE W	NT 60		<i>mg</i> (Malagasy)	
Co de	NE W	NT 60		<i>mk</i> (Macedonian)	
Co de	NE W	NT 60		<i>mn</i> (Mongolian)	
Co de	NE W	NT 60		<i>mt</i> (Maltese)	
Co de	NE W	NT 60		<i>nl</i> (Dutch, Flemish)	
Co de	NE W	NT 60		<i>no</i> (Norwegian)	
Co de	NE W	NT 60		<i>pl</i> (Polish)	
Co de	NE W	NT 60		<i>pt</i> (Portuguese)	
Co de	NE W	NT 60		<i>ro</i> (Romanian, Moldavian, Moldovan)	
Co de	NE W	NT 60		<i>ru</i> (Russian)	
Co de	NE W	NT 60		<i>se</i> (Northern Sami)	
Co de	NE W	NT 60		<i>sk</i> (Slovak)	
Co de	NE W	NT 60		<i>sl</i> (Slovenian)	
Co de	NE W	NT 60		<i>sm</i> (Samoan)	
Co de	NE W	NT 60		<i>so</i> (Somali)	
Co de	NE W	NT 60		<i>sq</i> (Albanian)	
Co de	NE W	NT 60		<i>sr</i> (Serbian)	
Co de	NE W	NT 60		<i>sv</i> (Swedish)	
Co de	NE W	NT 60		<i>sw</i> (Swahili)	

Code	NE W	NT 60		<i>ta</i> (Tamil)	
Code	NE W	NT 60		<i>th</i> (Thai)	
Code	NE W	NT 60		<i>tr</i> (Turkish)	
Code	NE W	NT 60		<i>uk</i> (Ukrainian)	
Code	NE W	NT 60		<i>ur</i> (Urdu)	
Code	NE W	NT 60		<i>uz</i> (Uzbek)	
Code	NE W	NT 60		<i>vi</i> (Vietnamese)	
Code	NE W	NT 60		<i>zh</i> (Chinese)	
Code	NE W	NT 7		<i>CMK</i> (square centimetre)	
Code	NE W	NT 7		<i>CMQ</i> (cubic centimetre)	
Code	NE W	NT 7		<i>E37</i> (pixel)	
Code	NE W	NT 7		<i>KWH</i> (kilowatthours)	
Code	NE W	NT 7		<i>MMK</i> (square millimetre)	
Code	NE W	NT 7		<i>MTK</i> (square metre)	
Code	NE W	NT 7		<i>CO2TON</i> (ton of CO2)	
Table	UPD ATE D	NT 7	unit of measure		OtherExternalReferenceURL Old value: New value: #http://docs.oasis-open.org/ubl/os-UBL-2.1/cl/gc/default/UnitOfMeasureCode-2.1.gc#
Table	UPD ATE D	NT 7	unit of measure		Description_English Old value: <i>unity of measure</i> New value: <i>unit of measure</i>
Code	NE W	T1 1		<i>4G</i> (Box, fibreboard)	
Code	NE W	T1 1		<i>4H</i> (Box, plastic)	
Code	NE W	T1 1		<i>5H</i> (Bag, woven plastic)	
Code	NE W	T1 1		<i>5L</i> (Bag, textile)	

Co de	UPD ATE D	T1 1		<i>5M</i> (Bag, paper)	Text_English Old value: <i>bag, paper</i> New value: <i>Bag, paper</i>
Co de	NE W	T1 1		<i>AJ</i> (Cone)	
Co de	NE W	T1 1		<i>BL</i> (Bale, compressed)	
Co de	NE W	T1 1		<i>BN</i> (Bale, non-compress ed)	
Co de	UPD ATE D	T1 1		<i>BX</i> (Box)	Text_English Old value: <i>box</i> New value: <i>Box</i>
Co de	NE W	T1 1		<i>CI</i> (Canister)	
Co de	NE W	T1 1		<i>CL</i> (Coil)	
Co de	NE W	T1 1		<i>CN</i> (Container, not other wise specified as tran sport equipment)	
Co de	NE W	T1 1		<i>CS</i> (Case)	
Co de	NE W	T1 1		<i>CT</i> (Carton)	
Co de	NE W	T1 1		<i>EC</i> (Bag, plastic)	
Co de	NE W	T1 1		<i>ED</i> (Case, with pallet bas e)	
Co de	NE W	T1 1		<i>EE</i> (Case, with pallet bas e, wooden)	
Co de	NE W	T1 1		<i>EF</i> (Case, with pallet bas e, cardboard)	
Co de	NE W	T1 1		<i>EG</i> (Case, with pallet bas e, plastic)	
Co de	NE W	T1 1		<i>EH</i> (Case, with pallet bas e, metal)	
Co de	NE W	T1 1		<i>FX</i> (Bag, flexible contain er)	
Co de	NE W	T1 1		<i>HN</i> (Hanger)	

Code	NE W	T1 1		<i>NF</i> (Unpacked or unpackaged, single unit)	
Code	NE W	T1 1		<i>NG</i> (Unpacked or unpackaged, multiple units)	
Code	NE W	T1 1		<i>OA</i> (Pallet, CHEP 40 cm x 60 cm)	
Code	NE W	T1 1		<i>OB</i> (Pallet, CHEP 80 cm x 120 cm)	
Code	NE W	T1 1		<i>OC</i> (Pallet, CHEP 100 cm x 120 cm)	
Code	NE W	T1 1		<i>OD</i> (Pallet, AS 4068-1993)	
Code	NE W	T1 1		<i>OE</i> (Pallet, ISO T11)	
Code	NE W	T1 1		<i>RJ</i> (Rack, clothing hanger)	
Code	NE W	T1 1		<i>RL</i> (Reel)	
Code	NE W	T1 1		<i>SO</i> (Spool)	
Code	NE W	T1 1		<i>ZZ</i> (Mutually defined)	
Table	UPD ATE D	T1 1	transport package type		OtherExternalReferenceURL Old value: New value: #http://docs.oasis-open.org/ubl/os-UBL-2.1/cl/gc/default/TransportEquipmentTypeCode-2.1.gc#
Table	UPD ATE D	T1 1	transport package type		Generalities Old value: <i>code specifying the type of package used for transport and delivery</i> New value: <i>code specifying the type of package used for transport and delivery (subset of UN/ECE 8053 and UBL TransportEquipmentTypeCode-2.1)</i>
Code	NE W	T2 1		<i>BOR</i> (blanket order)	
Code	NE W	T2 1		<i>CEO</i> (Certificate of origin)	
Code	NE W	T2 1		<i>CER</i> (Certificate)	
Code	UPD ATE D	T2 1		<i>CTR</i> (Contract)	Text_English Old value: <i>contract</i> New value: <i>Contract</i>

Co de	NE W	T2 1		<i>MCI</i> (Visual merchandising instruction)	
Co de	NE W	T2 1		<i>VMI</i> (visual merchandising instructions)	
Co de	NE W	T4 4		<i>CO</i> (company identification code)	
Co de	NE W	T4 8		<i>BB</i> (bottom back)	
Co de	NE W	T4 8		<i>BF</i> (bottom fore/front)	
Co de	NE W	T4 8		<i>CO</i> (collar)	
Co de	NE W	T4 8		<i>CU</i> (cuff)	
Co de	NE W	T4 8		<i>DV</i> (fore)	
Co de	NE W	T4 8		<i>EM</i> (embroidery)	
Co de	NE W	T4 8		<i>OC</i> (other component)	
Co de	NE W	T4 8		<i>PO</i> (pocket)	
Co de	NE W	T4 8		<i>SC</i> (back)	
Co de	NE W	T4 8		<i>SL</i> (sleeve)	
Co de	NE W	T4 8		<i>TB</i> (top back)	
Co de	NE W	T4 8		<i>TF</i> (top fore/front)	