



<http://www.ebiz-tcf.eu>

DRAFT

IMPLEMENTATION GUIDE

TRANSACTION "SPINNING ORDER CHANGE"

Version: draft

Date of release: 17/5/2019

Document code: G055

technical Documentation: <http://www.ebiz.enea.it>

XML Schemas repository: <http://www.ebiz.enea.it/moda-ml/repository/schema/draft/default.asp>

Guides repository: <http://www.ebiz.enea.it/moda-ml/repository/guide/draft/default.asp>

Guide filename: G055-eBIZ-SpinningOrderChange.pdf

0. PREMISE

This document contains a proposal for the updating and extension of eBIZ specifications starting from the eBIZ version released as CEN CWA 16667 in 2013. Under the name of 'Draft version' it is reported the result of an extensive work of analysis and consultation aimed at developing and maintaining eBIZ specifications.

In particular, the content of this proposal is the result of various activities, mainly those carried out within the framework of the **eBIZ 4.0 project** funded by the European Commission, call COS-DESIGN-2015-3-06, topic COS-2015-DESIGN-2.

The technical contents are backwards compatible with the latest official published version.

1. BUSINESS DESCRIPTION

1.1 Scope

The present guide has been issued to assist the companies of the Textile-Clothing sector in the implementation of the standard XML document type "SPINNING ORDER CHANGE", providing all the instruction required for its use in the context of e-commerce between Dyeing Subcontractors and their Customers shown in the enclosed diagram

All the rules required for the construction and validation of the document are embedded into the specific XML-Schema, which is detailed in section "Implementation guide".

1.2 Generalities

The Commissioner sends to the Subcontractor a spinning Order Change any time he must modify some conditions of his previous Order (eg. to suspend operations already ordered) or amend errors.

Basic function of the message is to replace an invalid Order with a valid Order, amending:

- suppliable quantities
- dates and places of delivery
- prices

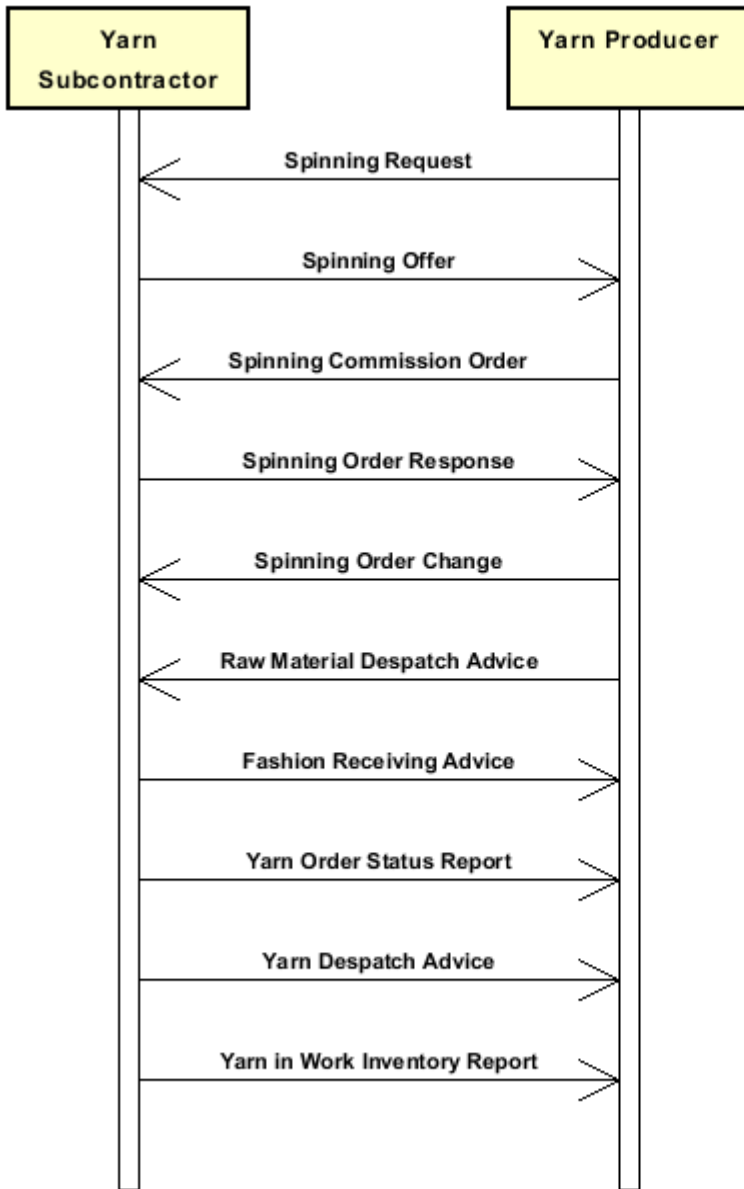
The Order Change can show a number of lines different from the related Purchase Order, when variations/cancellations have occurred so as to create the splitting of an Order Line.

However the sum of the quantities of the lines in the Order Change (confirmed + varied + cancelled) must always not less than the sum of the quantities in the original Order.

When the quantity is change the original line must be splitted and the confimed amount and canceled amount should be explicited through the 'act' flag.

1.3. Possible scenario

Subcontracted spinning of raw material



2. IMPLEMENTATION GUIDE

2.1 General structure of XML document

All the business data that can be exchanged through this class of documents are shown in the following "document structure", that provides a simplified vision of the Schema.

In particular:

- the two numbers following each element define its "cardinality" (minimum and maximum number of occurrences); the minimum equal zero indicates that the element is optional, the minimum greater than zero indicates that is mandatory;
- the bold character denotes the complex elements (aggregates of simple elements) that were built for the sake of functionality and re-usability of some complex informations sets. The child elements in each parent element are easily spotted as "indented";
- the symbol "@" denotes an attribute of the preceding element; here "the usage indicator (optional, required, ...)" is shown in square brackets.

Structure

RAWSpinOrdChange

@msgfunction [Optional] [Default= OR]

@version [Optional] [Default= draft]

@useProfile [Optional]

RSCXheader 1-1

| | msgN 1-1

- choose -

| | docID 0-1

| | *@numberingOrg [Optional]*

- or -

| | msgID 0-1

- end choose -

| | msgDate 1-1

| | *@dateForm [Optional]*

| | season 0-1

| | *@numberingOrg [Optional]*

| | *@codeList [Optional]*

| | *@listName [Optional]*

| | *@listVersion [Optional]*

| | msgCurrency 0-1

refDoc 1-9

| | *@docType [Required]*

| | docID 1-2

| | *@numberingOrg [Optional]*

| | docDate 0-1

| | *@dateForm [Optional]*

| | season 0-1

| | *@numberingOrg [Optional]*

| | *@codeList [Optional]*

| | *@listName [Optional]*

| | *@listVersion [Optional]*

| | itemID 0-1

attachment 0-1

| | *@uid [Optional]*

| | fileName 0-1

| | *@numberingOrg [Optional]*

| | binaryObject 0-1

| | *@format [Optional]*

| | *@mime [Optional]*

| | *@encoding [Optional]*

| | *@characterSet [Optional]*

```

| | | | externalReference 0-99
| | | | | uri 1-1
| | | | | @isURL [Optional] [Default= true]
| | | | | mimeTypeCode 0-1
| | | | | formatCode 0-1
| | | | | encodingCode 0-1
| | | | | characterSetCode 0-1
| | | | buyer 1-1
| | | | | @logo [Optional]
| | | | | @sender [Optional]
| | | | | | id 1-1
| | | | | | | @numberingOrg [Optional]
| | | | | | additionalIdentifier 0-9
| | | | | | | @numberingOrg [Optional]
| | | | | | | @idQualifier [Optional]
| | | | | | legalName 0-1
| | | | | | dept 0-1
| | | | | | subDept 0-1
| | | | | | person 0-1
| | | | | | | @email [Optional]
| | | | | | | @phone [Optional]
| | | | | | | @fax [Optional]
| | | | | | street 0-1
| | | | | | city 0-1
| | | | | | subCountry 0-1
| | | | | | country 0-1
| | | | | | postCode 0-1
| | | | | subContractor 1-1
| | | | | | @sender [Optional]
| | | | | | | id 1-1
| | | | | | | | @numberingOrg [Optional]
| | | | | | | legalName 0-1
| | | | | | | dept 0-1
| | | | | | | subDept 0-1
| | | | | | | person 0-1
| | | | | | | | @email [Optional]
| | | | | | | | @phone [Optional]
| | | | | | | | @fax [Optional]
| | | | | | | street 0-1
| | | | | | | city 0-1
| | | | | | | subCountry 0-1
| | | | | | | country 0-1
| | | | | | | postCode 0-1
| | | | | thirdParty 0-5
| | | | | | @VAT [Optional]
| | | | | | @role [Required]
| | | | | | @sender [Optional]
| | | | | | | id 1-1
| | | | | | | | @numberingOrg [Optional]
| | | | | | | legalName 0-1
| | | | | | | dept 0-1
| | | | | | | subDept 0-1
| | | | | | | person 0-1
| | | | | | | | @email [Optional]
| | | | | | | | @phone [Optional]
| | | | | | | | @fax [Optional]
| | | | | | | street 0-1
| | | | | | | city 0-1
| | | | | | | subCountry 0-1
| | | | | | | country 0-1
| | | | | | | postCode 0-1

```

| | note 0-99
| | @numberingOrg [Optional]
| | @codeList [Optional]
| | @noteLabel [Optional]

| **terms 0-1**

| | **payment 0-5**
| | @finDiscount [Optional]
| | @finSurcharge [Optional]
| | - choose -

| | | payTerm 1-1
| | - or -

| | | payTermText 1-1
| | - end choose -

| | | payMode 0-1

| | **insPayment 0-5**

| | @part [Required]

| | - choose -

| | | payTerm 1-1

| | - or -

| | | payTermText 1-1

| | - end choose -

| | | payMode 0-1

| | **trade 0-1**

| | - choose -

| | | incoTermText 1-1

| | - or -

| | | incoTerm 1-1

| | - end choose -

| | | location 0-1

| | | @LRI [Optional]

| | **transInfo 0-5**

| | @transReason [Optional]

| | @progr [Optional]

| | | transMode 1-1

| | | carrier 0-1

| | | deliveryPlace 0-1

| | | grossWeight 0-1

| | | @um [Required]

| | | netWeight 0-1

| | | @um [Required]

| | | transMeans 0-1

| | | transCondition 0-3

| | | transConditionText 0-1

| | | despatchPlace 0-1

| | | despatchDate 0-1

| | | @dateForm [Optional]

| | | delEffectiveDate 0-1

| | | @dateForm [Optional]

| | **allowanceCharge 0-9**

| | @um [Optional]

| | @VAT [Optional]

| | @minQty [Optional]

| | @currency [Optional]

| | @maxQty [Optional]

| | - choose -

| | | AC_category 1-1

| | - or -

| | | AC_categoryText 1-1

| | - end choose -

| | - choose -

- | | | AC_percent 1-1
- or -
- | | | AC_amount 1-1
- end choose -
- | | | **dtScheme 0-1**
- | | | @taxType [Required]
- | | | taxCategory 0-1
- | | | taxRate 0-1
- | | | legalRef 0-1
- | | | @codeList [Required]
- | | | note 0-99
- | | | @numberingOrg [Optional]
- | | | @codeList [Optional]
- | | | @noteLabel [Optional]

| **RSCXbody 1-1**

- | | **RSCXitem 1-unbounded**
- | | @act [Required]
- | | lineN 1-1
- | | @VAT [Optional]
- | | **refDoc 1-1**
- | | @docType [Required]
- | | docID 1-2
- | | @numberingOrg [Optional]
- | | docDate 0-1
- | | @dateForm [Optional]
- | | season 0-1
- | | @numberingOrg [Optional]
- | | @codeList [Optional]
- | | @listName [Optional]
- | | @listVersion [Optional]
- | | itemID 0-1
- | | **attachment 0-1**
- | | @uid [Optional]
- | | fileName 0-1
- | | @numberingOrg [Optional]
- | | binaryObject 0-1
- | | @format [Optional]
- | | @mime [Optional]
- | | @encoding [Optional]
- | | @characterSet [Optional]
- | | **externalReference 0-99**
- | | uri 1-1
- | | @isURL [Optional] [Default= true]
- | | mimeTypeCode 0-1
- | | formatCode 0-1
- | | encodingCode 0-1
- | | characterSetCode 0-1
- | | **yarnProd 0-1**
- | | @CTest [Optional]
- | | **yarnCode 1-1**
- | | @numberingOrg [Optional] [Default= CL]
- | | art 1-1
- | | @numberingOrg [Optional]
- | | @codeList [Optional]
- | | @listName [Optional]
- | | @listVersion [Optional]
- | | color 0-1
- | | @numberingOrg [Optional]
- | | @codeList [Optional]
- | | @listName [Optional]

```

| | | | @listVersion [Optional]
| | | | added 0-9
| | | | @numberingOrg [Optional]
| | | | @addType [Optional]
| | | | description 0-unbounded
| | | | @In [Optional]
| | | | yarnCompos 0-1
| | | | | percCompos 1-9
| | | | | @fibre [Required]
| | | | yarnSpecs 0-9
| | | | - choose -
| | | | | yarnCharText 1-1
| | | | - or -
| | | | | yarnChar 1-1
| | | | - end choose -
| | | | | experimValue 0-1
| | | | | @um [Optional]
| | | | | @method [Optional]
| | | | | @application [Optional]
| | | | | @idCO [Optional]
| | | | | specValue 0-1
| | | | | @um [Optional]
| | | | | @source [Optional]
| | | | | @method [Optional]
| | | | | @application [Optional]
| | | | | @CV [Optional]
| | | | - choose -
| | | | | tolerance 0-2
| | | | | @um [Required]
| | | | - or -
| | | | | pcTolerance 0-2
| | | | | @um [Optional]
| | | | - end choose -
| | | | colorCardItem 0-1
| | | | | color 1-2
| | | | | @numberingOrg [Optional]
| | | | | @codeList [Optional]
| | | | | @listName [Optional]
| | | | | @listVersion [Optional]
| | | | | CIELab 0-unbounded
| | | | | @illuminant [Optional]
| | | | | @standardObserver [Optional]
| | | | | | L 1-1
| | | | | | a 1-1
| | | | | | b 1-1
| | | | | refDoc 0-1
| | | | | @docType [Required]
| | | | | | docID 1-2
| | | | | | @numberingOrg [Optional]
| | | | | | docDate 0-1
| | | | | | @dateForm [Optional]
| | | | | | season 0-1
| | | | | | @numberingOrg [Optional]
| | | | | | @codeList [Optional]
| | | | | | @listName [Optional]
| | | | | | @listVersion [Optional]
| | | | | | itemID 0-1
| | | | | attachment 0-1
| | | | | @uid [Optional]
| | | | | | fileName 0-1
| | | | | | @numberingOrg [Optional]

```



```

| | | | | binaryObject 0-1
| | | | |   @format [Optional]
| | | | |   @mime [Optional]
| | | | |   @encoding [Optional]
| | | | |   @characterSet [Optional]
| | | | | externalReference 0-99
| | | | |   uri 1-1
| | | | |     @isURL [Optional] [Default= true]
| | | | |   mimeTypeCode 0-1
| | | | |   formatCode 0-1
| | | | |   encodingCode 0-1
| | | | |   characterSetCode 0-1
| | | | | description 0-unbounded
| | | | |   @ln [Optional]
| | | | | lotN 0-1
| | | | |   @numberingOrg [Optional]
| | | | | dyeN 0-1
| | | | |   @numberingOrg [Optional]
| | | | | yarnPack 0-1
| | | | |   yarnReel 1-1
| | | | |     @reelType [Required]
| | | | |     @reelMat [Optional]
| | | | |       yarnReelD 0-1
| | | | |         @um [Required]
| | | | |       yarnReelH 0-1
| | | | |         @um [Required]
| | | | |       yarnConeAngle 0-1
| | | | |       yarnReelQty 0-2
| | | | |         @um [Required]
| | | | |       label 0-1
| | | | |       labelWrit 0-1
| | | | |   yarnInWrap 0-1
| | | | |     yarnReelWrap 1-1
| | | | |     label 0-1
| | | | |     labelWrit 0-1
| | | | | - choose -
| | | | |   | yarnOutWrapText 0-1
| | | | | - or -
| | | | |   | yarnOutWrap 0-1
| | | | | - end choose -
| | | | | note 0-99
| | | | |   @numberingOrg [Optional]
| | | | |   @codeList [Optional]
| | | | |   @noteLabel [Optional]
| | | | | qty 0-2
| | | | |   @um [Required]
| | | | | price 0-1
| | | | |   @um [Optional]
| | | | |   @priceQualifier [Optional] [Default= NET]
| | | | |   @currency [Optional]
| | | | | deliveryDate 0-1
| | | | |   @dateForm [Optional]
| | | | | thirdParty 0-3
| | | | |   @VAT [Optional]
| | | | |   @role [Required]
| | | | |   @sender [Optional]
| | | | |     id 1-1
| | | | |       @numberingOrg [Optional]
| | | | |     legalName 0-1
| | | | |     dept 0-1
| | | | |     subDept 0-1

```

```

| person 0-1
|   @email [Optional]
|   @phone [Optional]
|   @fax [Optional]
| street 0-1
| city 0-1
| subCountry 0-1
| country 0-1
| postCode 0-1
| rawComponent 0-9
| @CQQ [Optional]
|   pcQty 0-1
|   @um [Optional]
|   rawCode 1-1
|   @numberingOrg [Optional]
|     art 1-1
|       @numberingOrg [Optional]
|       @codeList [Optional]
|       @listName [Optional]
|       @listVersion [Optional]
|     color 0-1
|       @numberingOrg [Optional]
|       @codeList [Optional]
|       @listName [Optional]
|       @listVersion [Optional]
|     added 0-9
|       @numberingOrg [Optional]
|       @addType [Optional]
|     description 0-unbounded
|       @ln [Optional]
| lotN 0-1
|   @numberingOrg [Optional]
| dyeN 0-1
|   @numberingOrg [Optional]
| qty 1-2
|   @um [Required]
| refDoc 0-1
| @docType [Required]
|   docID 1-2
|     @numberingOrg [Optional]
|   docDate 0-1
|     @dateForm [Optional]
|   season 0-1
|     @numberingOrg [Optional]
|     @codeList [Optional]
|     @listName [Optional]
|     @listVersion [Optional]
|   itemID 0-1
|   attachment 0-1
|     @uid [Optional]
|       fileName 0-1
|         @numberingOrg [Optional]
|       binaryObject 0-1
|         @format [Optional]
|         @mime [Optional]
|         @encoding [Optional]
|         @characterSet [Optional]
|       externalReference 0-99
|         uri 1-1
|           @isURL [Optional] [Default= true]
|         mimeType 0-1

```

```

| | | | | formatCode 0-1
| | | | | encodingCode 0-1
| | | | | characterSetCode 0-1
| | | | | location 0-1
| | | | | @LRI [Optional]
| | | | | note 0-99
| | | | | @numberingOrg [Optional]
| | | | | @codeList [Optional]
| | | | | @noteLabel [Optional]
| | | rawMnfrOperation 0-9
| | | - choose -
| | | | rawJob 1-1
| | | - or -
| | | | jobName 1-1
| | | - end choose -
| | | refDoc 0-1
| | | | @docType [Required]
| | | | | docID 1-2
| | | | | @numberingOrg [Optional]
| | | | | docDate 0-1
| | | | | @dateForm [Optional]
| | | | | season 0-1
| | | | | @numberingOrg [Optional]
| | | | | @codeList [Optional]
| | | | | @listName [Optional]
| | | | | @listVersion [Optional]
| | | | | itemID 0-1
| | | | attachment 0-1
| | | | | @uid [Optional]
| | | | | | fileName 0-1
| | | | | | @numberingOrg [Optional]
| | | | | | binaryObject 0-1
| | | | | | @format [Optional]
| | | | | | @mime [Optional]
| | | | | | @encoding [Optional]
| | | | | | @characterSet [Optional]
| | | | | externalReference 0-99
| | | | | | uri 1-1
| | | | | | @isURL [Optional] [Default= true]
| | | | | | mimeTypeCode 0-1
| | | | | | formatCode 0-1
| | | | | | encodingCode 0-1
| | | | | | characterSetCode 0-1
| | | | | note 0-99
| | | | | @numberingOrg [Optional]
| | | | | @codeList [Optional]
| | | | | @noteLabel [Optional]
| | | yarnMnfrOperation 0-9
| | | - choose -
| | | | jobName 1-1
| | | - or -
| | | | yarnJob 1-1
| | | - end choose -
| | | | yarnJobTech 0-1
| | | | refDoc 0-1
| | | | | @docType [Required]
| | | | | | docID 1-2
| | | | | | @numberingOrg [Optional]
| | | | | | docDate 0-1
| | | | | | @dateForm [Optional]
| | | | | | season 0-1

```

```

| | | | @numberingOrg [Optional]
| | | | @codeList [Optional]
| | | | @listName [Optional]
| | | | @listVersion [Optional]
| | | | itemID 0-1
| | | | attachment 0-1
| | | | | @uid [Optional]
| | | | | | fileName 0-1
| | | | | | @numberingOrg [Optional]
| | | | | | binaryObject 0-1
| | | | | | @format [Optional]
| | | | | | @mime [Optional]
| | | | | | @encoding [Optional]
| | | | | | @characterSet [Optional]
| | | | | externalReference 0-99
| | | | | | uri 1-1
| | | | | | | @isURL [Optional] [Default= true]
| | | | | | | mimeTypeCode 0-1
| | | | | | | formatCode 0-1
| | | | | | | encodingCode 0-1
| | | | | | | characterSetCode 0-1
| | | | yarnMachine 0-1
| | | | yarnMachineSpecs 0-9
| | | | | yarnMachineParam 1-1
| | | | | | specValue 0-1
| | | | | | @um [Optional]
| | | | | | @source [Optional]
| | | | | | @method [Optional]
| | | | | | @application [Optional]
| | | | | | @CV [Optional]
| | | | - choose -
| | | | | tolerance 0-2
| | | | | | @um [Required]
| | | | - or -
| | | | | pcTolerance 0-2
| | | | | | @um [Optional]
| | | | - end choose -
| | | | note 0-99
| | | | | @numberingOrg [Optional]
| | | | | @codeList [Optional]
| | | | | @noteLabel [Optional]
| | | | dtScheme 0-1
| | | | | @taxType [Required]
| | | | | | taxCategory 0-1
| | | | | | taxRate 0-1
| | | | | | legalRef 0-1
| | | | | | @codeList [Required]
| | | | | | note 0-99
| | | | | | @numberingOrg [Optional]
| | | | | | @codeList [Optional]
| | | | | | @noteLabel [Optional]
| | | | note 0-99
| | | | | @numberingOrg [Optional]
| | | | | @codeList [Optional]
| | | | | @noteLabel [Optional]

```

2.2 Detailed description of document elements

Following tables show all elements (complex and simple) used in this document. Description includes: 1) element's information: xml tag, name, brief description, data type and syntax constraints; 2) information about use of the element in a particular position in the document: xpath and possible associated notes.

2.2.1 Complex elements (Aggregate Business Information Entities)

Complex elements are those elements whose content is composed of other elements (childs).Complex elements are alphabetically ordered.

| | |
|--------------------------|--|
| allowanceCharge | Allowances and Charges related to an Order or a contract (XPath RAWSpinOrdChange/terms/allowanceCharge) 0-9 |
| attachment | an attached document. An attachment can refer to an external document or be included with the document being exchanged (XPath RAWSpinOrdChange/RSCXbody/RSCXitem/yarnProd/colorCardItem/refDoc/attachment) 0-1 (XPath RAWSpinOrdChange/RSCXbody/RSCXitem/yarnMnfrOperation/refDoc/attachment) 0-1 (XPath RAWSpinOrdChange/RSCXbody/RSCXitem/rawMnfrOperation/refDoc/attachment) 0-1 (XPath RAWSpinOrdChange/RSCXbody/RSCXitem/rawComponent/refDoc/attachment) 0-1 (XPath RAWSpinOrdChange/RSCXbody/RSCXitem/refDoc/attachment) 0-1 (XPath RAWSpinOrdChange/RSCXheader/refDoc/attachment) 0-1 |
| buyer | details of the Buyer (party that buys the good or service that is object of the current collaborative process) - base type: Nad, (XPath RAWSpinOrdChange/RSCXheader/buyer) 1-1 |
| CIELab | color point in the CIELab color space (XPath RAWSpinOrdChange/RSCXbody/RSCXitem/yarnProd/colorCardItem/CIELab) 0-unbounded |
| colorCardItem | item of the color card (XPath RAWSpinOrdChange/RSCXbody/RSCXitem/yarnProd/colorCardItem) 0-1 |
| dtScheme | set of data usable to declare the duty or tax applied (XPath RAWSpinOrdChange/RSCXbody/RSCXitem/dtScheme) 0-1 - note: <i>recommended alternative to the attribute @VAT</i> (XPath RAWSpinOrdChange/terms/allowanceCharge/dtScheme) 0-1 |
| externalReference | details about an external object, such as a document stored at a remote location (XPath RAWSpinOrdChange/RSCXbody/RSCXitem/yarnProd/colorCardItem/refDoc/attachment/externalReference) 0-99 (XPath RAWSpinOrdChange/RSCXbody/RSCXitem/refDoc/attachment/externalReference) 0-99 (XPath RAWSpinOrdChange/RSCXheader/refDoc/attachment/externalReference) 0-99 (XPath RAWSpinOrdChange/RSCXbody/RSCXitem/rawComponent/refDoc/attachment/externalReference) 0-99 (XPath RAWSpinOrdChange/RSCXbody/RSCXitem/rawMnfrOperation/refDoc/attachment/externalReference) 0-99 (XPath RAWSpinOrdChange/RSCXbody/RSCXitem/yarnMnfrOperation/refDoc/attachment/externalReference) 0-99 |
| insPayment | payment details for payment by installments |

| | |
|-------------------------|--|
| | (XPath RAWSpinOrdChange/terms/insPayment) 0-5 - note: <i>excluded the case of offers, this set of data is alternative to payment set and must be iterated for each payment installment</i> |
| payment | payment details for payment all in one (XPath RAWSpinOrdChange/terms/payment) 0-5 - note: <i>excluded the case of offers, this set of data is alternative to insPayment, it can be iterated to specify alternative terms of payment (e.g.: 60 days or 30 days with 3% discount)</i> |
| rawCode | full codification of a raw material (XPath RAWSpinOrdChange/RSCXbody/RSCXitem/rawComponent/rawCode) 1-1 |
| rawComponent | identification details of a raw material used in a sub-contracted manufacturing operation (XPath RAWSpinOrdChange/RSCXbody/RSCXitem/rawComponent) 0-9 |
| rawMnfrOperation | details of a manufacturing operation on raw material used for manufacturing a yarn product (XPath RAWSpinOrdChange/RSCXbody/RSCXitem/rawMnfrOperation) 0-9 |
| refDoc | identification of a document and of an item thereof, to which the message makes reference (XPath RAWSpinOrdChange/RSCXbody/RSCXitem/rawComponent/refDoc) 0-1 (XPath RAWSpinOrdChange/RSCXbody/RSCXitem/yarnProd/colorCardItem/refDoc) 0-1 - note: <i>here the CxF3 file can be referenced</i> (XPath RAWSpinOrdChange/RSCXbody/RSCXitem/refDoc) 1-1 - note: <i>Use to link the line of the present document to the line of the order, use refDoc element; numberingOrg indicates the role that produced the document and such reference, customer or supplier (both might be reported through two instances of refDoc)</i> (XPath RAWSpinOrdChange/RSCXbody/RSCXitem/rawMnfrOperation/refDoc) 0-1 (XPath RAWSpinOrdChange/RSCXheader/refDoc) 1-9 (XPath RAWSpinOrdChange/RSCXbody/RSCXitem/yarnMnfrOperation/refDoc) 0-1 - note: <i>here a Process Sheet transmitted to the Subcontractor can be referenced</i> |
| RSCXbody | body of the documents SPINNING ORDER RESPONSE and CHANGE (XPath RAWSpinOrdChange/RSCXbody) 1-1 |
| RSCXheader | header of the documents SPINNING ORDER RESPONSE and CHANGE (XPath RAWSpinOrdChange/RSCXheader) 1-1 |
| RSCXitem | line of the documents SPINNING ORDER RESPONSE and CHANGE (XPath RAWSpinOrdChange/RSCXbody/RSCXitem) 1-unbounded |
| subContractor | details of the Sub-contractor - base type: Nad, (XPath RAWSpinOrdChange/RSCXheader/subContractor) 1-1 |
| terms | details of the commercial obligations for payment and delivery (XPath RAWSpinOrdChange/terms) 0-1 |
| thirdParty | details of the Third Party, different from Buyer or Supplier - base type: Nad, (XPath RAWSpinOrdChange/RSCXbody/RSCXitem/thirdParty) 0-3 (XPath RAWSpinOrdChange/RSCXheader/thirdParty) 0-5 |
| trade | general terms of trade for the specified supply (XPath RAWSpinOrdChange/terms/trade) 0-1 |
| transInfo | details of transport: mode, carrier and delivery place (XPath RAWSpinOrdChange/terms/transInfo) 0-5 |

| | |
|--------------------------|--|
| yarnCode | full codification of a yarn product (XPath RAWSpinOrdChange/RSCXbody/RSCXitem/yarnProd/yarnCode) 1-1 - note: <i>also intermediate products must be virtually codified</i> |
| yarnCompos | fibrous composition of a yarn product (XPath RAWSpinOrdChange/RSCXbody/RSCXitem/yarnProd/yarnCompos) 0-1 |
| yarnInWrap | details specifying the inner wrapping of a yarn product (XPath RAWSpinOrdChange/RSCXbody/RSCXitem/yarnProd/yarnPack/yarnInWrap) 0-1 |
| yarnMachineSpecs | technical specifications of a machine used in an operation of a work cycle for yarn (type and settings) (XPath RAWSpinOrdChange/RSCXbody/RSCXitem/yarnMnfrOperation/yarnMachineSpecs) 0-9 |
| yarnMnfrOperation | details of a manufacturing operation used for manufacturing a yarn product (XPath RAWSpinOrdChange/RSCXbody/RSCXitem/yarnMnfrOperation) 0-9 |
| yarnPack | details of type of presentation used for the yarn (XPath RAWSpinOrdChange/RSCXbody/RSCXitem/yarnProd/yarnPack) 0-1 |
| yarnProd | manufacturing specifications of the product to be obtained from an operation of the sub-contracted production of a yarn (XPath RAWSpinOrdChange/RSCXbody/RSCXitem/yarnProd) 0-1 |
| yarnReel | details of the packaging of a yarn product (bobbin and reel,...) (XPath RAWSpinOrdChange/RSCXbody/RSCXitem/yarnProd/yarnPack/yarnReel) 1-1 |
| yarnSpecs | technical properties of a yarn product linked to an operation of the sub-contracted production of yarn or to the purchase of yarn (XPath RAWSpinOrdChange/RSCXbody/RSCXitem/yarnProd/yarnSpecs) 0-9 - note: <i>here are the specifications referred to the article identified with</i> |

2.2.2 Simple elements (Basic Business Information Entities)

Simple elements are those elements whose content is characterized by a data type plus a domain of possible values. Simple elements are alphabetically ordered.

| | |
|------------------------|--|
| a | "a" dimension of the CIE Lab color system - base type: decimal, (XPath RAWSpinOrdChange/RSCXbody/RSCXitem/yarnProd/colorCardItem/CIELab/a) 1-1 |
| AC_amount | amount of an Allowance or Charge - base type: decimal, fraction digits: 2, (XPath RAWSpinOrdChange/terms/allowanceCharge/AC_amount) 1-1 |
| AC_category | coded specification of an Allowance or Charge - base type: string, cod. table: T41 http://www.ebiz.enea.it/moda-ml/repository/codelist/draft/gc_T41.xml (XPath RAWSpinOrdChange/terms/allowanceCharge/AC_category) 1-1 |
| AC_categoryText | free text description of an Allowance or Charge - base type: string, max length: 250, (XPath RAWSpinOrdChange/terms/allowanceCharge/AC_categoryText) 1-1 |
| AC_percent | amount of an Allowance or Charge as a percentage - base type: decimal, max inclusive: 100, fraction digits: 2, (XPath RAWSpinOrdChange/terms/allowanceCharge/AC_percent) 1-1 |

| | |
|----------------------|--|
| @act | <p>status that the current line assigns to the line addressed in the reference document; if it is already canceled it maintains the status.</p> <p>- base type: string, cod. table: NT5 http://www.ebiz.enea.it/moda-ml/repository/codelist/draft/gc_NT5.xml (XPath RAWSpinOrdChange/RSCXbody/RSCXitem/@act) [Required]</p> |
| added | <p>additional code of the product (complementing the formers)</p> <p>- base type: string, max length: 80, (XPath RAWSpinOrdChange/RSCXbody/RSCXitem/rawComponent/rawCode/added) 0-9 (XPath RAWSpinOrdChange/RSCXbody/RSCXitem/yarnProd/yarnCode/added) 0-9</p> <p>- note: <i>here an additional codification (see table T44) can be specified</i></p> |
| additionalIdentifier | <p>additional identification code of a Party, for example customs registries or others</p> <p>- base type: string, max length: 15, (XPath RAWSpinOrdChange/RSCXheader/buyer/additionalIdentifier) 0-9</p> <p>- note: <i>identifiers for example for exports, such as MID (Manufacturer Identification Code), EORI (E.O.R.I. - Economic Operator Registration and Identification)</i></p> |
| @addType | <p>qualifier of the additional coding of a product</p> <p>- base type: string, cod. table: T44 http://www.ebiz.enea.it/moda-ml/repository/codelist/draft/gc_T44.xml (XPath RAWSpinOrdChange/RSCXbody/RSCXitem/yarnProd/yarnCode/added/@addType) [Optional]</p> <p>- nota: <i>addType allows the clarification of the meaning of the added element content; it is strongly suggested to use it always.</i> (XPath RAWSpinOrdChange/RSCXbody/RSCXitem/rawComponent/rawCode/added/@addType) [Optional]</p> <p>- nota: <i>addType allows the clarification of the meaning of the added element content; it is strongly suggested to use it always.</i></p> |
| @application | <p>force or similar condition (e.g. no. of revolutions) applied in a test as specified within the standard</p> <p>- base type: string, max length: 15, (XPath RAWSpinOrdChange/RSCXbody/RSCXitem/yarnProd/yarnSpecs/specValue/@application) [Optional] (XPath RAWSpinOrdChange/RSCXbody/RSCXitem/yarnProd/yarnSpecs/experimValue/@application) [Optional] (XPath RAWSpinOrdChange/RSCXbody/RSCXitem/yarnMnfrOperation/yarnMachineSpecs/specValue/@application) [Optional]</p> |
| art | <p>article number of the product</p> <p>- base type: string, max length: 80, (XPath RAWSpinOrdChange/RSCXbody/RSCXitem/yarnProd/yarnCode/art) 1-1 (XPath RAWSpinOrdChange/RSCXbody/RSCXitem/rawComponent/rawCode/art) 1-1</p> |
| b | <p>"b" dimension of the CIELab color system</p> <p>- base type: decimal, (XPath RAWSpinOrdChange/RSCXbody/RSCXitem/yarnProd/colorCardItem/CIELab/b) 1-1</p> |
| binaryObject | <p>a binary large object containing an attached document</p> <p>- base type: base64Binary, (XPath RAWSpinOrdChange/RSCXheader/refDoc/attachment/binaryObject) 0-1 (XPath RAWSpinOrdChange/RSCXbody/RSCXitem/yarnProd/colorCardItem/refDoc/attachment/binaryObject) 0-1 (XPath RAWSpinOrdChange/RSCXbody/RSCXitem/rawComponent/refDoc/attachment/binaryObject) 0-1 (XPath RAWSpinOrdChange/RSCXbody/RSCXitem/yarnMnfrOperation/refDoc/attachment/binaryObject) 0-1</p> |

| | |
|------------------|--|
| | <p>(XPath RAWSpinOrdChange/RSCXbody/RSCXitem/refDoc/attachment/binaryObject) 0-1</p> <p>(XPath RAWSpinOrdChange/RSCXbody/RSCXitem/rawMnfrOperation/refDoc/attachment/binaryObject) 0-1</p> |
| carrier | <p>identification of the transport carrier</p> <p>- base type: string, max length: 40,</p> <p>(XPath RAWSpinOrdChange/terms/transInfo/carrier) 0-1</p> |
| @characterSet | <p>the character set of the binary object if the mime type is text</p> <p>- base type: normalizedString,</p> <p>(XPath RAWSpinOrdChange/RSCXheader/refDoc/attachment/binaryObject/@characterSet) [Optional]</p> <p>(XPath RAWSpinOrdChange/RSCXbody/RSCXitem/yarnProd/colorCardItem/refDoc/attachment/binaryObject/@characterSet) [Optional]</p> <p>(XPath RAWSpinOrdChange/RSCXbody/RSCXitem/yarnMnfrOperation/refDoc/attachment/binaryObject/@characterSet) [Optional]</p> <p>(XPath RAWSpinOrdChange/RSCXbody/RSCXitem/rawMnfrOperation/refDoc/attachment/binaryObject/@characterSet) [Optional]</p> <p>(XPath RAWSpinOrdChange/RSCXbody/RSCXitem/refDoc/attachment/binaryObject/@characterSet) [Optional]</p> <p>(XPath RAWSpinOrdChange/RSCXbody/RSCXitem/rawComponent/refDoc/attachment/binaryObject/@characterSet) [Optional]</p> |
| characterSetCode | <p>the character set of an external document</p> <p>- base type: normalizedString,</p> <p>(XPath RAWSpinOrdChange/RSCXheader/refDoc/attachment/externalReference/characterSetCode) 0-1</p> <p>(XPath RAWSpinOrdChange/RSCXbody/RSCXitem/rawComponent/refDoc/attachment/externalReference/characterSetCode) 0-1</p> <p>(XPath RAWSpinOrdChange/RSCXbody/RSCXitem/rawMnfrOperation/refDoc/attachment/externalReference/characterSetCode) 0-1</p> <p>(XPath RAWSpinOrdChange/RSCXbody/RSCXitem/yarnProd/colorCardItem/refDoc/attachment/externalReference/characterSetCode) 0-1</p> <p>(XPath RAWSpinOrdChange/RSCXbody/RSCXitem/yarnMnfrOperation/refDoc/attachment/externalReference/characterSetCode) 0-1</p> <p>(XPath RAWSpinOrdChange/RSCXbody/RSCXitem/refDoc/attachment/externalReference/characterSetCode) 0-1</p> |
| city | <p>name of the city (town, village)</p> <p>- base type: string, max length: 40,</p> <p>(XPath RAWSpinOrdChange/RSCXheader/thirdParty/city) 0-1</p> <p>(XPath RAWSpinOrdChange/RSCXheader/buyer/city) 0-1</p> <p>(XPath RAWSpinOrdChange/RSCXbody/RSCXitem/thirdParty/city) 0-1</p> <p>(XPath RAWSpinOrdChange/RSCXheader/subContractor/city) 0-1</p> |
| @codeList | <p>it specifies the URL where the list of codes used to make an instance of the element can be found</p> <p>- base type: string, max length: 255,</p> <p>(XPath RAWSpinOrdChange/RSCXbody/RSCXitem/rawMnfrOperation/note/@codeList) [Optional]</p> <p>- nota: <i>must be used to provide (URL) the list of codes used in "noteLabel"</i></p> <p>(XPath RAWSpinOrdChange/RSCXbody/RSCXitem/rawComponent/refDoc/season/@codeList) [Optional]</p> <p>(XPath RAWSpinOrdChange/terms/allowanceCharge/dtScheme/legalRef/@codeList) [Required]</p> <p>(XPath RAWSpinOrdChange/RSCXbody/RSCXitem/refDoc/season/@codeList) [Optional]</p> <p>(XPath RAWSpinOrdChange/terms/allowanceCharge/dtScheme/note/@codeList) [Optional]</p> <p>- nota: <i>must be used to provide (URL) the list of codes used in "noteLabel"</i></p> |

| | |
|---------|---|
| | <p>(XPath RAWSpinOrdChange/RSCXbody/RSCXitem/yarnProd/note/@codeList) [Optional]</p> <p>- nota: <i>must be used to provide (URL) the list of codes used in "noteLabel"</i> (XPath RAWSpinOrdChange/RSCXbody/RSCXitem/note/@codeList) [Optional]</p> <p>- nota: <i>must be used to provide (URL) the list of codes used in "noteLabel"</i> (XPath RAWSpinOrdChange/RSCXheader/note/@codeList) [Optional]</p> <p>- nota: <i>must be used to provide (URL) the list of codes used in "noteLabel"</i> (XPath RAWSpinOrdChange/RSCXbody/RSCXitem/yarnProd/colorCardItem/color/@codeList) [Optional]</p> <p>- nota: <i>this attribute could be used as alternative to the others</i> (XPath RAWSpinOrdChange/RSCXbody/RSCXitem/yarnMnfrOperation/note/@codeList) [Optional]</p> <p>- nota: <i>must be used to provide (URL) the list of codes used in "noteLabel"</i> (XPath RAWSpinOrdChange/RSCXbody/RSCXitem/rawComponent/rawCode/art/@codeList) [Optional]</p> <p>- nota: <i>this attribute should be ALTERNATIVE to the others</i> (XPath RAWSpinOrdChange/RSCXbody/RSCXitem/rawComponent/note/@codeList) [Optional]</p> <p>- nota: <i>must be used to provide (URL) the list of codes used in "noteLabel"</i> (XPath RAWSpinOrdChange/RSCXheader/refDoc/season/@codeList) [Optional]</p> <p>(XPath RAWSpinOrdChange/RSCXbody/RSCXitem/dtScheme/legalRef/@codeList) [Required]</p> <p>(XPath RAWSpinOrdChange/RSCXbody/RSCXitem/yarnProd/colorCardItem/refDoc/season/@codeList) [Optional]</p> <p>(XPath RAWSpinOrdChange/RSCXbody/RSCXitem/dtScheme/note/@codeList) [Optional]</p> <p>- nota: <i>must be used to provide (URL) the list of codes used in "noteLabel"</i> (XPath RAWSpinOrdChange/RSCXbody/RSCXitem/yarnMnfrOperation/refDoc/season/@codeList) [Optional]</p> <p>(XPath RAWSpinOrdChange/RSCXbody/RSCXitem/yarnProd/yarnCode/art/@codeList) [Optional]</p> <p>- nota: <i>this attribute should be ALTERNATIVE to the others</i> (XPath RAWSpinOrdChange/RSCXbody/RSCXitem/yarnProd/yarnCode/color/@codeList) [Optional]</p> <p>- nota: <i>this attribute could be used as alternative to the others</i> (XPath RAWSpinOrdChange/RSCXbody/RSCXitem/rawComponent/rawCode/color/@codeList) [Optional]</p> <p>- nota: <i>this attribute could be used as alternative to the others</i> (XPath RAWSpinOrdChange/RSCXbody/RSCXitem/rawMnfrOperation/refDoc/season/@codeList) [Optional]</p> <p>(XPath RAWSpinOrdChange/RSCXheader/season/@codeList) [Optional]</p> |
| color | <p>colour number of the product, when not included in the model or fabric code</p> <p>- base type: string, max length: 15,</p> <p>(XPath RAWSpinOrdChange/RSCXbody/RSCXitem/yarnProd/colorCardItem/color) 1-2</p> <p>- note: <i>multiple color values allowed if they differ for at least one of the numberingOrg and listName attributes</i></p> <p>(XPath RAWSpinOrdChange/RSCXbody/RSCXitem/rawComponent/rawCode/color) 0-1</p> <p>(XPath RAWSpinOrdChange/RSCXbody/RSCXitem/yarnProd/yarnCode/color) 0-1</p> |
| country | <p>code of the nation</p> <p>- base type: string, cod. table: T10</p> <p>http://www.ebiz.enea.it/moda-ml/repository/codelist/draft/gc_T10.xml</p> <p>(XPath RAWSpinOrdChange/RSCXheader/thirdParty/country) 0-1</p> <p>(XPath RAWSpinOrdChange/RSCXbody/RSCXitem/thirdParty/country) 0-1</p> <p>(XPath RAWSpinOrdChange/RSCXheader/buyer/country) 0-1</p> <p>(XPath RAWSpinOrdChange/RSCXheader/subContractor/country) 0-1</p> |
| @CQQ | <p>specifies if the committed quantity can or can not include the loss in weight</p> <p>- base type: string, cod. table: NT37</p> <p>http://www.ebiz.enea.it/moda-ml/repository/codelist/draft/gc_NT37.xml</p> |

| | |
|------------------|--|
| | (XPath RAWSpinOrdChange/RSCXbody/RSCXitem/rawComponent/@CQQ) [Optional] |
| @CTest | indicates the need to execute a colour test before the operation - base type: string, cod. table: NT38 http://www.ebiz.enea.it/moda-ml/repository/codelist/draft/gc_NT38.xml (XPath RAWSpinOrdChange/RSCXbody/RSCXitem/yarnProd/@CTest) [Optional] |
| @currency | currency in which a specified monetary data is expressed - base type: string, cod. table: T9 http://www.ebiz.enea.it/moda-ml/repository/codelist/draft/gc_T9.xml (XPath RAWSpinOrdChange/RSCXbody/RSCXitem/price/@currency) [Optional] - nota: <i>Currency referred by the price.</i> (XPath RAWSpinOrdChange/terms/allowanceCharge/@currency) [Optional] |
| @CV | coefficient of variation (CV) of a measurement - base type: decimal, (XPath RAWSpinOrdChange/RSCXbody/RSCXitem/yarnProd/yarnSpecs/specValue/@CV) [Optional] (XPath RAWSpinOrdChange/RSCXbody/RSCXitem/yarnMnfrOperation/yarnMachineSpecs/specValue/@CV) [Optional] |
| @dateForm | format used for the date - base type: string, cod. table: NT29 http://www.ebiz.enea.it/moda-ml/repository/codelist/draft/gc_NT29.xml (XPath RAWSpinOrdChange/RSCXbody/RSCXitem/yarnProd/colorCardItem/refDoc/docDate/@dateForm) [Optional] (XPath RAWSpinOrdChange/RSCXbody/RSCXitem/yarnMnfrOperation/refDoc/docDate/@dateForm) [Optional] (XPath RAWSpinOrdChange/RSCXbody/RSCXitem/rawComponent/refDoc/docDate/@dateForm) [Optional] (XPath RAWSpinOrdChange/terms/transInfo/despatchDate/@dateForm) [Optional] (XPath RAWSpinOrdChange/RSCXheader/refDoc/docDate/@dateForm) [Optional] (XPath RAWSpinOrdChange/RSCXheader/msgDate/@dateForm) [Optional] (XPath RAWSpinOrdChange/terms/transInfo/delEffectiveDate/@dateForm) [Optional] (XPath RAWSpinOrdChange/RSCXbody/RSCXitem/deliveryDate/@dateForm) [Optional] (XPath RAWSpinOrdChange/RSCXbody/RSCXitem/rawMnfrOperation/refDoc/docDate/@dateForm) [Optional] (XPath RAWSpinOrdChange/RSCXbody/RSCXitem/refDoc/docDate/@dateForm) [Optional] |
| delEffectiveDate | effective date of delivery of goods (declared in Despatch), according to one of the patterns YYYY-MM-DD, YYYY-MM-DD:HH-MM or YYYY-WW. - base type: string, (XPath RAWSpinOrdChange/terms/transInfo/delEffectiveDate) 0-1 |
| deliveryDate | date of delivery of goods, requested or promised in the purchase process, according to one of the patterns YYYY-MM-DD, YYYY-MM-DD:HH-MM or YYYY-WW. - base type: string, (XPath RAWSpinOrdChange/RSCXbody/RSCXitem/deliveryDate) 0-1 |
| deliveryPlace | place of delivery of goods, ultimate or related to a given leg - base type: string, max length: 250, (XPath RAWSpinOrdChange/terms/transInfo/deliveryPlace) 0-1 |
| dept | name or code of a contact department within a Party - base type: string, max length: 40, (XPath RAWSpinOrdChange/RSCXheader/buyer/dept) 0-1 (XPath RAWSpinOrdChange/RSCXheader/thirdParty/dept) 0-1 (XPath RAWSpinOrdChange/RSCXheader/subContractor/dept) 0-1 (XPath RAWSpinOrdChange/RSCXbody/RSCXitem/thirdParty/dept) 0-1 |

| | |
|---------------|---|
| description | <p>free text description. The content of the element must be unique, it might be translated and repeated into more languages (thus no more than one instance for each language).</p> <p>- base type: string, max length: 250, (XPath RAWSpinOrdChange/RSCXbody/RSCXitem/rawComponent/rawCode/description) 0-unbounded</p> <p>- note: <i>Raw material description</i> (XPath RAWSpinOrdChange/RSCXbody/RSCXitem/yarnProd/colorCardItem/description) 0-unbounded (XPath RAWSpinOrdChange/RSCXbody/RSCXitem/yarnProd/yarnCode/description) 0-unbounded</p> <p>- note: <i>Product description</i></p> |
| despatchDate | <p>date of despatch of goods, requested or promised in the purchase process, according to one of the patterns YYYY-MM-DD, YYYY-MM-DD:HH-MM or YYYY-WW.</p> <p>- base type: string, (XPath RAWSpinOrdChange/terms/transInfo/despatchDate) 0-1</p> |
| despatchPlace | <p>place of despatch of goods, origin or related to a given leg</p> <p>- base type: string, max length: 250, (XPath RAWSpinOrdChange/terms/transInfo/despatchPlace) 0-1</p> |
| docDate | <p>date of issue of the referenced document, according to one of the patterns YYYY-MM-DD, YYYY-MM-DD:HH-MM or YYYY-WW.</p> <p>- base type: string, (XPath RAWSpinOrdChange/RSCXheader/refDoc/docDate) 0-1 (XPath RAWSpinOrdChange/RSCXbody/RSCXitem/rawMnfrOperation/refDoc/docDate) 0-1 (XPath RAWSpinOrdChange/RSCXbody/RSCXitem/rawComponent/refDoc/docDate) 0-1 (XPath RAWSpinOrdChange/RSCXbody/RSCXitem/refDoc/docDate) 0-1 (XPath RAWSpinOrdChange/RSCXbody/RSCXitem/yarnProd/colorCardItem/refDoc/docDate) 0-1 (XPath RAWSpinOrdChange/RSCXbody/RSCXitem/yarnMnfrOperation/refDoc/docDate) 0-1</p> |
| docID | <p>identification number of the referenced document SINCE 2008-1 ITS USE IN THE HEADER IS DISCOURAGED (REPLACED BY msgID)</p> <p>- base type: string, max length: 80, (XPath RAWSpinOrdChange/RSCXbody/RSCXitem/yarnMnfrOperation/refDoc/docID) 1-2 (XPath RAWSpinOrdChange/RSCXbody/RSCXitem/refDoc/docID) 1-2 (XPath RAWSpinOrdChange/RSCXbody/RSCXitem/rawMnfrOperation/refDoc/docID) 1-2 (XPath RAWSpinOrdChange/RSCXbody/RSCXitem/yarnProd/colorCardItem/refDoc/docID) 1-2 (XPath RAWSpinOrdChange/RSCXbody/RSCXitem/rawComponent/refDoc/docID) 1-2 (XPath RAWSpinOrdChange/RSCXheader/docID) 0-1 (XPath RAWSpinOrdChange/RSCXheader/refDoc/docID) 1-2</p> |
| @docType | <p>type or class to which the referenced document belongs</p> <p>- base type: string, cod. table: T21 http://www.ebiz.enea.it/moda-ml/repository/codelist/draft/gc_T21.xml (XPath RAWSpinOrdChange/RSCXbody/RSCXitem/rawComponent/refDoc/@docType) [Required] (XPath RAWSpinOrdChange/RSCXbody/RSCXitem/yarnMnfrOperation/refDoc/@docType) [Required] (XPath RAWSpinOrdChange/RSCXbody/RSCXitem/refDoc/@docType) [Required]</p> |

| | |
|--------------|--|
| | <p>(XPath RAWSpinOrdChange/RSCXbody/RSCXitem/rawMnfrOperation/refDoc/@docType) [Required] (XPath RAWSpinOrdChange/RSCXheader/refDoc/@docType) [Required] (XPath RAWSpinOrdChange/RSCXbody/RSCXitem/yarnProd/colorCardItem/refDoc/@docType) [Required]</p> |
| dyeN | <p>number of the dyeing batch of a textile product - base type: string, max length: 15, (XPath RAWSpinOrdChange/RSCXbody/RSCXitem/rawComponent/dyeN) 0-1 (XPath RAWSpinOrdChange/RSCXbody/RSCXitem/yarnProd/dyeN) 0-1 - note: <i>identifier that the Subcontractor is requested to assign to the present dyeing bath - to be used only in the Dyeing Order</i></p> |
| @email | <p>electronic mail address of the contact person within a Party - base type: string, max length: 250, (XPath RAWSpinOrdChange/RSCXheader/thirdParty/person/@email) [Optional] (XPath RAWSpinOrdChange/RSCXheader/buyer/person/@email) [Optional] (XPath RAWSpinOrdChange/RSCXheader/subContractor/person/@email) [Optional] (XPath RAWSpinOrdChange/RSCXbody/RSCXitem/thirdParty/person/@email) [Optional]</p> |
| @encoding | <p>specifies the decoding algorithm of the binary object - base type: normalizedString, (XPath RAWSpinOrdChange/RSCXbody/RSCXitem/yarnMnfrOperation/refDoc/attachment/binaryObject/@encoding) [Optional] (XPath RAWSpinOrdChange/RSCXbody/RSCXitem/rawComponent/refDoc/attachment/binaryObject/@encoding) [Optional] (XPath RAWSpinOrdChange/RSCXbody/RSCXitem/refDoc/attachment/binaryObject/@encoding) [Optional] (XPath RAWSpinOrdChange/RSCXbody/RSCXitem/yarnProd/colorCardItem/refDoc/attachment/binaryObject/@encoding) [Optional] (XPath RAWSpinOrdChange/RSCXheader/refDoc/attachment/binaryObject/@encoding) [Optional] (XPath RAWSpinOrdChange/RSCXbody/RSCXitem/rawMnfrOperation/refDoc/attachment/binaryObject/@encoding) [Optional]</p> |
| encodingCode | <p>the encoding/decoding algorithm used with the external object - base type: normalizedString, (XPath RAWSpinOrdChange/RSCXbody/RSCXitem/yarnMnfrOperation/refDoc/attachment/externalReference/encodingCode) 0-1 (XPath RAWSpinOrdChange/RSCXheader/refDoc/attachment/externalReference/encodingCode) 0-1 (XPath RAWSpinOrdChange/RSCXbody/RSCXitem/refDoc/attachment/externalReference/encodingCode) 0-1 (XPath RAWSpinOrdChange/RSCXbody/RSCXitem/yarnProd/colorCardItem/refDoc/attachment/externalReference/encodingCode) 0-1 (XPath RAWSpinOrdChange/RSCXbody/RSCXitem/rawComponent/refDoc/attachment/externalReference/encodingCode) 0-1 (XPath RAWSpinOrdChange/RSCXbody/RSCXitem/rawMnfrOperation/refDoc/attachment/externalReference/encodingCode) 0-1</p> |
| experimValue | <p>experimental value of the measurement - base type: decimal, (XPath RAWSpinOrdChange/RSCXbody/RSCXitem/yarnProd/yarnSpecs/experimValue) 0-1</p> |
| @fax | <p>fax number of the contact person within a Party - base type: string, max length: 35, (XPath RAWSpinOrdChange/RSCXheader/thirdParty/person/@fax) [Optional] (XPath RAWSpinOrdChange/RSCXheader/buyer/person/@fax) [Optional] (XPath RAWSpinOrdChange/RSCXheader/subContractor/person/@fax) [Optional]</p> |

| | |
|---------------|---|
| | (XPath RAWSpinOrdChange/RSCXbody/RSCXitem/thirdParty/person/@fax) [Optional] |
| @fibre | <p>type of fibre used in a textile product</p> <p>- base type: string, cod. table: T19</p> <p>http://www.ebiz.enea.it/moda-ml/repository/codelist/draft/gc_T19.xml</p> <p>(XPath RAWSpinOrdChange/RSCXbody/RSCXitem/yarnProd/yarnCompos/percCompos/@fibre) [Required]</p> |
| fileName | <p>unique identifier (name) of the file</p> <p>- base type: string, max length: 255,</p> <p>(XPath RAWSpinOrdChange/RSCXbody/RSCXitem/rawComponent/refDoc/attachment/fileName) 0-1</p> <p>(XPath RAWSpinOrdChange/RSCXheader/refDoc/attachment/fileName) 0-1</p> <p>(XPath RAWSpinOrdChange/RSCXbody/RSCXitem/refDoc/attachment/fileName) 0-1</p> <p>(XPath RAWSpinOrdChange/RSCXbody/RSCXitem/yarnMnfrOperation/refDoc/attachment/fileName) 0-1</p> <p>(XPath RAWSpinOrdChange/RSCXbody/RSCXitem/rawMnfrOperation/refDoc/attachment/fileName) 0-1</p> <p>(XPath RAWSpinOrdChange/RSCXbody/RSCXitem/yarnProd/colorCardItem/refDoc/attachment/fileName) 0-1</p> |
| @finDiscount | <p>financial discount rate applied for payment by the date specified</p> <p>- base type: decimal, min inclusive: 0, max inclusive: 100, fraction digits: 2,</p> <p>(XPath RAWSpinOrdChange/terms/payment/@finDiscount) [Optional]</p> |
| @finSurcharge | <p>financial surcharge rate applied for payment after the date specified</p> <p>- base type: decimal, min inclusive: 0, max inclusive: 100, fraction digits: 2,</p> <p>(XPath RAWSpinOrdChange/terms/payment/@finSurcharge) [Optional]</p> |
| @format | <p>the format of the binary content</p> <p>- base type: string,</p> <p>(XPath RAWSpinOrdChange/RSCXbody/RSCXitem/rawComponent/refDoc/attachment/binaryObject/@format) [Optional]</p> <p>(XPath RAWSpinOrdChange/RSCXbody/RSCXitem/yarnProd/colorCardItem/refDoc/attachment/binaryObject/@format) [Optional]</p> <p>(XPath RAWSpinOrdChange/RSCXheader/refDoc/attachment/binaryObject/@format) [Optional]</p> <p>(XPath RAWSpinOrdChange/RSCXbody/RSCXitem/rawMnfrOperation/refDoc/attachment/binaryObject/@format) [Optional]</p> <p>(XPath RAWSpinOrdChange/RSCXbody/RSCXitem/refDoc/attachment/binaryObject/@format) [Optional]</p> <p>(XPath RAWSpinOrdChange/RSCXbody/RSCXitem/yarnMnfrOperation/refDoc/attachment/binaryObject/@format) [Optional]</p> |
| formatCode | <p>the format of the external object</p> <p>- base type: normalizedString,</p> <p>(XPath RAWSpinOrdChange/RSCXbody/RSCXitem/refDoc/attachment/externalReference/formatCode) 0-1</p> <p>(XPath RAWSpinOrdChange/RSCXbody/RSCXitem/rawMnfrOperation/refDoc/attachment/externalReference/formatCode) 0-1</p> <p>(XPath RAWSpinOrdChange/RSCXbody/RSCXitem/yarnProd/colorCardItem/refDoc/attachment/externalReference/formatCode) 0-1</p> <p>(XPath RAWSpinOrdChange/RSCXheader/refDoc/attachment/externalReference/formatCode) 0-1</p> <p>(XPath RAWSpinOrdChange/RSCXbody/RSCXitem/rawComponent/refDoc/attachment/externalReference/formatCode) 0-1</p> |

| | |
|--------------|---|
| grossWeight | <p>the gross weight, declared for transport or customs purpose</p> <ul style="list-style-type: none"> - base type: decimal, min inclusive: 0, fraction digits: 2, <p>(XPath RAWSpinOrdChange/terms/transInfo/grossWeight) 0-1</p> |
| id | <p>primary identification code of a Party; it is recommended the format: nation code (ISO 3166) + VAT identification number (11 crt), with the qualifier "numberingOrg"= MF</p> <ul style="list-style-type: none"> - base type: string, max length: 15, <p>(XPath RAWSpinOrdChange/RSCXheader/buyer/id) 1-1 (XPath RAWSpinOrdChange/RSCXbody/RSCXitem/thirdParty/id) 1-1 (XPath RAWSpinOrdChange/RSCXheader/subContractor/id) 1-1 (XPath RAWSpinOrdChange/RSCXheader/thirdParty/id) 1-1</p> |
| @idCO | <p>primary identification code of the Party executing the test; it is recommended the format: nation code (ISO 3166) + VAT identification number (11 crt).</p> <ul style="list-style-type: none"> - base type: string, max length: 15, <p>(XPath RAWSpinOrdChange/RSCXbody/RSCXitem/yarnProd/yarnSpecs/experimValue/@idCO) [Optional]</p> |
| @idQualifier | <p>Qualification of the identifier.</p> <ul style="list-style-type: none"> - base type: string, <p>(XPath RAWSpinOrdChange/RSCXheader/buyer/additionalIdentifier/@idQualifier) [Optional]</p> <p>- nota: <i>this attribute should be used when the numberingOrg attribute is not enough to declare the type of identifier</i></p> |
| @illuminant | <p>CIE light source</p> <ul style="list-style-type: none"> - base type: string, cod. table: T59 <p>http://www.ebiz.enea.it/moda-ml/repository/codelist/draft/gc_T59.xml (XPath RAWSpinOrdChange/RSCXbody/RSCXitem/yarnProd/colorCardItem/CIELab/@illuminant) [Optional]</p> |
| incoTerm | <p>specification of the terms of trade (INCOTERMS)</p> <ul style="list-style-type: none"> - base type: string, cod. table: T3 <p>http://www.ebiz.enea.it/moda-ml/repository/codelist/draft/gc_T3.xml (XPath RAWSpinOrdChange/terms/trade/incoTerm) 1-1</p> |
| incoTermText | <p>free text specifying the terms of trade (incoterm, location)</p> <ul style="list-style-type: none"> - base type: string, max length: 250, <p>(XPath RAWSpinOrdChange/terms/trade/incoTermText) 1-1</p> |
| @isURL | <p>it indicates if the referred element is an URL (true) or not (false)</p> <ul style="list-style-type: none"> - base type: boolean, <p>(XPath RAWSpinOrdChange/RSCXbody/RSCXitem/yarnProd/colorCardItem/refDoc/attachment/externalReference/uri/@isURL) [Optional] [Default= true]</p> <p>- nota: <i>usage of URLs is recommended</i></p> <p>(XPath RAWSpinOrdChange/RSCXbody/RSCXitem/rawMnfrOperation/refDoc/attachment/externalReference/uri/@isURL) [Optional] [Default= true]</p> <p>- nota: <i>usage of URLs is recommended</i></p> <p>(XPath RAWSpinOrdChange/RSCXheader/refDoc/attachment/externalReference/uri/@isURL) [Optional] [Default= true]</p> <p>- nota: <i>usage of URLs is recommended</i></p> <p>(XPath RAWSpinOrdChange/RSCXbody/RSCXitem/rawComponent/refDoc/attachment/externalReference/uri/@isURL) [Optional] [Default= true]</p> <p>- nota: <i>usage of URLs is recommended</i></p> <p>(XPath RAWSpinOrdChange/RSCXbody/RSCXitem/refDoc/attachment/externalReference/uri/@isURL) [Optional] [Default= true]</p> <p>- nota: <i>usage of URLs is recommended</i></p> <p>(XPath RAWSpinOrdChange/RSCXbody/RSCXitem/yarnMnfrOperation/refDoc/attachment/externalReference/uri/@isURL) [Optional] [Default= true]</p> <p>- nota: <i>usage of URLs is recommended</i></p> |

| | |
|-----------|--|
| itemID | <p>number of the line/item of the referenced document</p> <p>- base type: string, max length: 6,</p> <p>(XPath RAWSpinOrdChange/RSCXheader/refDoc/itemID) 0-1</p> <p>(XPath RAWSpinOrdChange/RSCXbody/RSCXitem/rawComponent/refDoc/itemID) 0-1</p> <p>(XPath RAWSpinOrdChange/RSCXbody/RSCXitem/rawMnfrOperation/refDoc/itemID) 0-1</p> <p>(XPath RAWSpinOrdChange/RSCXbody/RSCXitem/yarnProd/colorCardItem/refDoc/itemID) 0-1</p> <p>(XPath RAWSpinOrdChange/RSCXbody/RSCXitem/yarnMnfrOperation/refDoc/itemID) 0-1</p> <p>(XPath RAWSpinOrdChange/RSCXbody/RSCXitem/refDoc/itemID) 0-1</p> |
| jobName | <p>description of the elementary job</p> <p>- base type: string, max length: 40,</p> <p>(XPath RAWSpinOrdChange/RSCXbody/RSCXitem/rawMnfrOperation/jobName) 1-1</p> <p>(XPath RAWSpinOrdChange/RSCXbody/RSCXitem/yarnMnfrOperation/jobName) 1-1</p> |
| L | <p>"L" value of the CIELab color system</p> <p>- base type: decimal, min inclusive: 0,</p> <p>(XPath RAWSpinOrdChange/RSCXbody/RSCXitem/yarnProd/colorCardItem/CIELab/L) 1-1</p> |
| label | <p>indicates if the physical object specified has to be labelled</p> <p>- base type: boolean,</p> <p>(XPath RAWSpinOrdChange/RSCXbody/RSCXitem/yarnProd/yarnPack/yarnReel/label) 0-1</p> <p>(XPath RAWSpinOrdChange/RSCXbody/RSCXitem/yarnProd/yarnPack/yarnInWrap/label) 0-1</p> |
| labelWrit | <p>text that must be written on the lable of a specified physical object when its customization is required</p> <p>- base type: string, max length: 350,</p> <p>(XPath RAWSpinOrdChange/RSCXbody/RSCXitem/yarnProd/yarnPack/yarnReel/labelWrit) 0-1</p> <p>(XPath RAWSpinOrdChange/RSCXbody/RSCXitem/yarnProd/yarnPack/yarnInWrap/labelWrit) 0-1</p> |
| legalName | <p>legal name of a Party</p> <p>- base type: string, max length: 250,</p> <p>(XPath RAWSpinOrdChange/RSCXheader/buyer/legalName) 0-1</p> <p>(XPath RAWSpinOrdChange/RSCXheader/subContractor/legalName) 0-1</p> <p>(XPath RAWSpinOrdChange/RSCXheader/thirdParty/legalName) 0-1</p> <p>(XPath RAWSpinOrdChange/RSCXbody/RSCXitem/thirdParty/legalName) 0-1</p> |
| legalRef | <p>legal reference of the duty or tax or fee category</p> <p>- base type: string,</p> <p>(XPath RAWSpinOrdChange/RSCXbody/RSCXitem/dtScheme/legalRef) 0-1</p> <p>(XPath RAWSpinOrdChange/terms/allowanceCharge/dtScheme/legalRef) 0-1</p> |
| lineN | <p>number of the line item of the present message (xml document); it is set by the role that produces the document. Usually it is a progressive number, but not always.</p> <p>- base type: positiveInteger, min inclusive: 1, max inclusive: 9999,</p> <p>(XPath RAWSpinOrdChange/RSCXbody/RSCXitem/lineN) 1-1</p> |
| @listName | <p>the name of the list of codes used to make an instance of the element (it might be thought as descriptive element, i.e. 'fabric printing technologies', or not, i.e. "T264")</p> <p>- base type: string, max length: 40,</p> |

| | |
|---------------------|---|
| | <p>(XPath RAWSpinOrdChange/RSCXbody/RSCXitem/rawComponent/refDoc/season/@listName) [Optional]</p> <p>(XPath RAWSpinOrdChange/RSCXheader/season/@listName) [Optional]</p> <p>(XPath RAWSpinOrdChange/RSCXbody/RSCXitem/yarnProd/colorCardItem/refDoc/season/@listName) [Optional]</p> <p>(XPath RAWSpinOrdChange/RSCXbody/RSCXitem/yarnMnfrOperation/refDoc/season/@listName) [Optional]</p> <p>(XPath RAWSpinOrdChange/RSCXbody/RSCXitem/rawComponent/rawCode/color/@listName) [Optional]</p> <p>- nota: <i>this attribute should always be used coupled with “numberingOrg”</i></p> <p>(XPath RAWSpinOrdChange/RSCXheader/refDoc/season/@listName) [Optional]</p> <p>(XPath RAWSpinOrdChange/RSCXbody/RSCXitem/rawComponent/rawCode/art/@listName) [Optional]</p> <p>- nota: <i>this attribute should always be used coupled with “numberingOrg”</i></p> <p>(XPath RAWSpinOrdChange/RSCXbody/RSCXitem/rawMnfrOperation/refDoc/season/@listName) [Optional]</p> <p>(XPath RAWSpinOrdChange/RSCXbody/RSCXitem/yarnProd/colorCardItem/color/@listName) [Optional]</p> <p>- nota: <i>this attribute should always be used coupled with “numberingOrg”</i></p> <p>(XPath RAWSpinOrdChange/RSCXbody/RSCXitem/yarnProd/yarnCode/art/@listName) [Optional]</p> <p>- nota: <i>this attribute should always be used coupled with “numberingOrg”</i></p> <p>(XPath RAWSpinOrdChange/RSCXbody/RSCXitem/yarnProd/yarnCode/color/@listName) [Optional]</p> <p>- nota: <i>this attribute should always be used coupled with “numberingOrg”</i></p> <p>(XPath RAWSpinOrdChange/RSCXbody/RSCXitem/refDoc/season/@listName) [Optional]</p> |
| <p>@listVersion</p> | <p>it specifies the version of the list of codes used to make an instance of the element</p> <p>- base type: string, max length: 6,</p> <p>(XPath RAWSpinOrdChange/RSCXbody/RSCXitem/rawMnfrOperation/refDoc/season/@listVersion) [Optional]</p> <p>(XPath RAWSpinOrdChange/RSCXbody/RSCXitem/yarnProd/yarnCode/color/@listVersion) [Optional]</p> <p>- nota: <i>this attribute should always be used coupled with “numberingOrg” and “listName”</i></p> <p>(XPath RAWSpinOrdChange/RSCXbody/RSCXitem/yarnMnfrOperation/refDoc/season/@listVersion) [Optional]</p> <p>(XPath RAWSpinOrdChange/RSCXbody/RSCXitem/refDoc/season/@listVersion) [Optional]</p> <p>(XPath RAWSpinOrdChange/RSCXbody/RSCXitem/rawComponent/rawCode/art/@listVersion) [Optional]</p> <p>- nota: <i>this attribute should always be used coupled with “numberingOrg” and “listName”</i></p> <p>(XPath RAWSpinOrdChange/RSCXbody/RSCXitem/yarnProd/yarnCode/art/@listVersion) [Optional]</p> <p>- nota: <i>this attribute should always be used coupled with “numberingOrg” and “listName”</i></p> <p>(XPath RAWSpinOrdChange/RSCXbody/RSCXitem/yarnProd/colorCardItem/refDoc/season/@listVersion) [Optional]</p> <p>(XPath RAWSpinOrdChange/RSCXbody/RSCXitem/rawComponent/refDoc/season/@listVersion) [Optional]</p> <p>(XPath RAWSpinOrdChange/RSCXheader/season/@listVersion) [Optional]</p> <p>(XPath RAWSpinOrdChange/RSCXbody/RSCXitem/rawComponent/rawCode/color/@listVersion) [Optional]</p> <p>- nota: <i>this attribute should always be used coupled with “numberingOrg” and “listName”</i></p> <p>(XPath RAWSpinOrdChange/RSCXbody/RSCXitem/yarnProd/colorCardItem/color/@listVersion) [Optional]</p> <p>- nota: <i>this attribute should always be used coupled with “numberingOrg” and “listName”</i></p> |

| | |
|----------|---|
| | (XPath RAWSpinOrdChange/RSCXheader/refDoc/season/@listVersion) [Optional] |
| @ln | Language code. - base type: string, (XPath RAWSpinOrdChange/RSCXbody/RSCXitem/yarnProd/yarnCode/description/@ln) [Optional] (XPath RAWSpinOrdChange/RSCXbody/RSCXitem/yarnProd/colorCardItem/description/@ln) [Optional] (XPath RAWSpinOrdChange/RSCXbody/RSCXitem/rawComponent/rawCode/description/@ln) [Optional] |
| location | specification of a location - base type: string, max length: 40, (XPath RAWSpinOrdChange/RSCXbody/RSCXitem/rawComponent/location) 0-1 (XPath RAWSpinOrdChange/terms/trade/location) 0-1 - note: <i>place to which the INCOTERM applies</i> |
| @logo | company logo (URL of the image jpeg or gif). It is recommended that the width of the image does not exceed 640 pixel. - base type: string, max length: 255, (XPath RAWSpinOrdChange/RSCXheader/buyer/@logo) [Optional] |
| lotN | lot number of a product or batch number of the raw material - base type: string, max length: 15, (XPath RAWSpinOrdChange/RSCXbody/RSCXitem/rawComponent/lotN) 0-1 (XPath RAWSpinOrdChange/RSCXbody/RSCXitem/yarnProd/lotN) 0-1 - note: <i>identifier that the Subcontractor is requested to assign to the present production lot</i> |
| @LRI | attribute usable to format a string according to a customized User rule (local rule) - base type: string, cod. table: NT3 http://www.ebiz.enea.it/moda-ml/repository/codelist/draft/gc_NT3.xml (XPath RAWSpinOrdChange/RSCXbody/RSCXitem/rawComponent/location/@LRI) [Optional] (XPath RAWSpinOrdChange/terms/trade/location/@LRI) [Optional] |
| @maxQty | maximum product quantity - base type: decimal, min inclusive: 0, fraction digits: 2, (XPath RAWSpinOrdChange/terms/allowanceCharge/@maxQty) [Optional] - nota: <i>maximum quantity of product for the application of this allowance or charge</i> |
| @method | standard protocol or method employed in a test to evaluate a characteristic or a parameter - base type: string, max length: 80, (XPath RAWSpinOrdChange/RSCXbody/RSCXitem/yarnMnfrOperation/yarnMachineSpecs/specValue/@method) [Optional] (XPath RAWSpinOrdChange/RSCXbody/RSCXitem/yarnProd/yarnSpecs/experimValue/@method) [Optional] - nota: <i>we recommend the specification of the method of measure only when different from the one of the MODA-ML coding system</i> (XPath RAWSpinOrdChange/RSCXbody/RSCXitem/yarnProd/yarnSpecs/specValue/@method) [Optional] |
| @mime | the mime type of the binary object - base type: normalizedString, (XPath RAWSpinOrdChange/RSCXheader/refDoc/attachment/binaryObject/@mime) [Optional] (XPath RAWSpinOrdChange/RSCXbody/RSCXitem/yarnMnfrOperation/refDoc/attachment/binaryObject/@mime) [Optional] (XPath RAWSpinOrdChange/RSCXbody/RSCXitem/rawMnfrOperation/refDoc/attachment/binaryObject/@mime) [Optional] |

| | |
|--------------|---|
| | <p>(XPath RAWSpinOrdChange/RSCXbody/RSCXitem/refDoc/attachment/binaryObject/@mime) [Optional]</p> <p>(XPath RAWSpinOrdChange/RSCXbody/RSCXitem/yarnProd/colorCardItem/refDoc/attachment/binaryObject/@mime) [Optional]</p> <p>(XPath RAWSpinOrdChange/RSCXbody/RSCXitem/rawComponent/refDoc/attachment/binaryObject/@mime) [Optional]</p> |
| mimeCode | <p>mime type of the external object</p> <p>- base type: normalizedString,</p> <p>(XPath RAWSpinOrdChange/RSCXheader/refDoc/attachment/externalReference/mimeCode) 0-1</p> <p>(XPath RAWSpinOrdChange/RSCXbody/RSCXitem/yarnProd/colorCardItem/refDoc/attachment/externalReference/mimeCode) 0-1</p> <p>(XPath RAWSpinOrdChange/RSCXbody/RSCXitem/refDoc/attachment/externalReference/mimeCode) 0-1</p> <p>(XPath RAWSpinOrdChange/RSCXbody/RSCXitem/rawMnfrOperation/refDoc/attachment/externalReference/mimeCode) 0-1</p> <p>(XPath RAWSpinOrdChange/RSCXbody/RSCXitem/yarnMnfrOperation/refDoc/attachment/externalReference/mimeCode) 0-1</p> <p>(XPath RAWSpinOrdChange/RSCXbody/RSCXitem/rawComponent/refDoc/attachment/externalReference/mimeCode) 0-1</p> |
| @minQty | <p>minimum product quantity</p> <p>- base type: decimal, min inclusive: 0, fraction digits: 2,</p> <p>(XPath RAWSpinOrdChange/terms/allowanceCharge/@minQty) [Optional]</p> <p>- nota: <i>minimum quantity of product for the application of this allowance or charge</i></p> |
| msgCurrency | <p>currency used to express the monetary amounts of the message</p> <p>- base type: string, cod. table: T9</p> <p>http://www.ebiz.enea.it/moda-ml/repository/codelist/draft/gc_T9.xml</p> <p>(XPath RAWSpinOrdChange/RSCXheader/msgCurrency) 0-1</p> |
| msgDate | <p>date of issue of the present message (xml document), according to one of the patterns YYYY-MM-DD, YYYY-MM-DD:HH-MM or YYYY-WW.</p> <p>- base type: string,</p> <p>(XPath RAWSpinOrdChange/RSCXheader/msgDate) 1-1</p> |
| @msgfunction | <p>function performed by the present message with regards to the transmission</p> <p>- base type: string, cod. table: NT18</p> <p>http://www.ebiz.enea.it/moda-ml/repository/codelist/draft/gc_NT18.xml</p> <p>(XPath RAWSpinOrdChange/@msgfunction) [Optional] [Default= OR]</p> |
| msgID | <p>key identifier of the business document in the information system of the issuing Party. In case of more despatches of the same business document, it is unchanged.</p> <p>- base type: string, max length: 35,</p> <p>(XPath RAWSpinOrdChange/RSCXheader/msgID) 0-1</p> |
| msgN | <p>identification number given to the message (xml document) by its issuer. In case of more despatches of the same business document, it changes.</p> <p>- base type: string, max length: 35,</p> <p>(XPath RAWSpinOrdChange/RSCXheader/msgN) 1-1</p> |
| netWeight | <p>the net weight declared for transport or customs purpose</p> <p>- base type: decimal, min inclusive: 0, fraction digits: 2,</p> <p>(XPath RAWSpinOrdChange/terms/transInfo/netWeight) 0-1</p> |
| note | <p>free text or structured (computer processing) note. For note structuring use the attributes "noteLabel" and "codelist"</p> <p>- base type: string, max length: 350,</p> <p>(XPath RAWSpinOrdChange/RSCXbody/RSCXitem/yarnProd/note) 0-99</p> <p>(XPath RAWSpinOrdChange/RSCXbody/RSCXitem/dtScheme/note) 0-99</p> <p>(XPath RAWSpinOrdChange/RSCXheader/note) 0-99</p> <p>(XPath RAWSpinOrdChange/RSCXbody/RSCXitem/rawComponent/note) 0-99</p> |

| | |
|---------------|--|
| | <p>(XPath RAWSpinOrdChange/terms/allowanceCharge/dtScheme/note) 0-99 (XPath RAWSpinOrdChange/RSCXbody/RSCXitem/note) 0-99 (XPath RAWSpinOrdChange/RSCXbody/RSCXitem/rawMnfrOperation/note) 0-99 (XPath RAWSpinOrdChange/RSCXbody/RSCXitem/yarnMnfrOperation/note) 0-99</p> |
| @noteLabel | <p>subject qualifier of a note</p> <ul style="list-style-type: none"> - base type: string, max length: 35, (XPath RAWSpinOrdChange/RSCXbody/RSCXitem/rawComponent/note/@noteLabel) [Optional] - nota: <i>must be used to qualify the subject of the note</i> (XPath RAWSpinOrdChange/RSCXheader/note/@noteLabel) [Optional] - nota: <i>must be used to qualify the subject of the note</i> (XPath RAWSpinOrdChange/terms/allowanceCharge/dtScheme/note/@noteLabel) [Optional] - nota: <i>must be used to qualify the subject of the note</i> (XPath RAWSpinOrdChange/RSCXbody/RSCXitem/dtScheme/note/@noteLabel) [Optional] - nota: <i>must be used to qualify the subject of the note</i> (XPath RAWSpinOrdChange/RSCXbody/RSCXitem/yarnProd/note/@noteLabel) [Optional] - nota: <i>must be used to qualify the subject of the note</i> (XPath RAWSpinOrdChange/RSCXbody/RSCXitem/rawMnfrOperation/note/@noteLabel) [Optional] - nota: <i>must be used to qualify the subject of the note</i> (XPath RAWSpinOrdChange/RSCXbody/RSCXitem/yarnMnfrOperation/note/@noteLabel) [Optional] - nota: <i>must be used to qualify the subject of the note</i> (XPath RAWSpinOrdChange/RSCXbody/RSCXitem/note/@noteLabel) [Optional] - nota: <i>must be used to qualify the subject of the note</i> |
| @numberingOrg | <p>code specifying the organisation who has created or owns the coding or numbering system</p> <ul style="list-style-type: none"> - base type: string, cod. table: NT6 http://www.ebiz.enea.it/moda-ml/repository/codelist/draft/gc_NT6.xml (XPath RAWSpinOrdChange/RSCXheader/docID/@numberingOrg) [Optional] - nota: <i>here can be specified whose document numbering is used (e.g.: Client, Supplier, ..)</i> (XPath RAWSpinOrdChange/RSCXbody/RSCXitem/rawComponent/refDoc/attachment/fileName/@numberingOrg) [Optional] (XPath RAWSpinOrdChange/RSCXbody/RSCXitem/yarnMnfrOperation/refDoc/docID/@numberingOrg) [Optional] - nota: <i>here can be specified whose document numbering is used (e.g.: Client, Supplier, ..)</i> (XPath RAWSpinOrdChange/RSCXbody/RSCXitem/rawComponent/refDoc/season/@numberingOrg) [Optional] (XPath RAWSpinOrdChange/RSCXbody/RSCXitem/dtScheme/note/@numberingOrg) [Optional] (XPath RAWSpinOrdChange/RSCXbody/RSCXitem/yarnMnfrOperation/refDoc/attachment/fileName/@numberingOrg) [Optional] (XPath RAWSpinOrdChange/RSCXbody/RSCXitem/note/@numberingOrg) [Optional] (XPath RAWSpinOrdChange/RSCXbody/RSCXitem/rawComponent/rawCode/color/@numberingOrg) [Optional] - nota: <i>this attribute should be used either single or coupled with "listName" and "listVersion"</i> (XPath RAWSpinOrdChange/RSCXbody/RSCXitem/yarnMnfrOperation/refDoc/season/@numberingOrg) [Optional] |

(XPath RAWSpinOrdChange/RSCXbody/RSCXitem/rawMnfrOperation/refDoc/season/@numberingOrg) [Optional]

(XPath RAWSpinOrdChange/RSCXbody/RSCXitem/rawComponent/lotN/@numberingOrg) [Optional]

(XPath RAWSpinOrdChange/RSCXbody/RSCXitem/rawMnfrOperation/refDoc/attachment/fileName/@numberingOrg) [Optional]

(XPath RAWSpinOrdChange/RSCXbody/RSCXitem/rawComponent/note/@numberingOrg) [Optional]

(XPath RAWSpinOrdChange/RSCXbody/RSCXitem/rawComponent/dyeN/@numberingOrg) [Optional]

(XPath RAWSpinOrdChange/RSCXheader/season/@numberingOrg) [Optional]

(XPath RAWSpinOrdChange/RSCXbody/RSCXitem/yarnMnfrOperation/note/@numberingOrg) [Optional]

(XPath RAWSpinOrdChange/RSCXbody/RSCXitem/rawComponent/rawCode/added/@numberingOrg) [Optional]

(XPath RAWSpinOrdChange/RSCXbody/RSCXitem/rawMnfrOperation/note/@numberingOrg) [Optional]

(XPath RAWSpinOrdChange/RSCXbody/RSCXitem/rawMnfrOperation/refDoc/docID/@numberingOrg) [Optional]

- nota: here can be specified whose document numbering is used (e.g.: Client, Supplier, ..)

(XPath RAWSpinOrdChange/RSCXbody/RSCXitem/rawComponent/refDoc/docID/@numberingOrg) [Optional]

- nota: here can be specified whose document numbering is used (e.g.: Client, Supplier, ..)

(XPath RAWSpinOrdChange/RSCXheader/refDoc/attachment/fileName/@numberingOrg) [Optional]

(XPath RAWSpinOrdChange/RSCXbody/RSCXitem/yarnProd/colorCardItem/refDoc/docID/@numberingOrg) [Optional]

- nota: here can be specified whose document numbering is used (e.g.: Client, Supplier, ..)

(XPath RAWSpinOrdChange/RSCXbody/RSCXitem/yarnProd/colorCardItem/color/@numberingOrg) [Optional]

- nota: this attribute should be used either single or coupled with "listName" and "listVersion"

(XPath RAWSpinOrdChange/RSCXbody/RSCXitem/yarnProd/yarnCode/color/@numberingOrg) [Optional]

- nota: this attribute should be used either single or coupled with "listName" and "listVersion"

(XPath RAWSpinOrdChange/RSCXbody/RSCXitem/yarnProd/yarnCode/added/@numberingOrg) [Optional]

(XPath RAWSpinOrdChange/RSCXbody/RSCXitem/yarnProd/colorCardItem/refDoc/season/@numberingOrg) [Optional]

(XPath RAWSpinOrdChange/RSCXheader/refDoc/season/@numberingOrg) [Optional]

(XPath RAWSpinOrdChange/RSCXbody/RSCXitem/yarnProd/note/@numberingOrg) [Optional]

(XPath RAWSpinOrdChange/RSCXbody/RSCXitem/yarnProd/dyeN/@numberingOrg) [Optional]

(XPath RAWSpinOrdChange/RSCXbody/RSCXitem/yarnProd/colorCardItem/refDoc/attachment/fileName/@numberingOrg) [Optional]

(XPath RAWSpinOrdChange/RSCXbody/RSCXitem/yarnProd/lotN/@numberingOrg) [Optional]

(XPath RAWSpinOrdChange/terms/allowanceCharge/dtScheme/note/@numberingOrg) [Optional]

(XPath RAWSpinOrdChange/RSCXheader/buyer/additionalIdentifier/@numberingOrg) [Optional]

- nota: here the issuer of the identifier must be specified

(XPath RAWSpinOrdChange/RSCXheader/note/@numberingOrg) [Optional]

(XPath RAWSpinOrdChange/RSCXheader/subContractor/id/@numberingOrg) [Optional]

| | |
|-------------|---|
| | <p>(XPath RAWSpinOrdChange/RSCXheader/thirdParty/id/@numberingOrg) [Optional] (XPath RAWSpinOrdChange/RSCXheader/buyer/id/@numberingOrg) [Optional] (XPath RAWSpinOrdChange/RSCXbody/RSCXitem/yarnProd/yarnCode/@numberingOrg) [Optional] [Default= CL] (XPath RAWSpinOrdChange/RSCXbody/RSCXitem/yarnProd/yarnCode/art/@numberingOrg) [Optional] - nota: <i>this attribute should be used either single or coupled with "listName" and "listVersion"</i> (XPath RAWSpinOrdChange/RSCXbody/RSCXitem/refDoc/attachment/fileName/@numberingOrg) [Optional] (XPath RAWSpinOrdChange/RSCXbody/RSCXitem/refDoc/docID/@numberingOrg) [Optional] - nota: <i>here can be specified whose document numbering is used (e.g.: Client, Supplier, ..)</i> (XPath RAWSpinOrdChange/RSCXbody/RSCXitem/refDoc/season/@numberingOrg) [Optional] (XPath RAWSpinOrdChange/RSCXbody/RSCXitem/thirdParty/id/@numberingOrg) [Optional] (XPath RAWSpinOrdChange/RSCXbody/RSCXitem/rawComponent/rawCode/art/@numberingOrg) [Optional] - nota: <i>this attribute should be used either single or coupled with "listName" and "listVersion"</i> (XPath RAWSpinOrdChange/RSCXbody/RSCXitem/rawComponent/rawCode/@numberingOrg) [Optional] (XPath RAWSpinOrdChange/RSCXheader/refDoc/docID/@numberingOrg) [Optional]] - nota: <i>here can be specified whose document numbering is used (e.g.: Client, Supplier, ..)</i></p> |
| @part | <p>percent fraction of a total payment - base type: decimal, min inclusive: 1, max inclusive: 99, fraction digits: 2, (XPath RAWSpinOrdChange/terms/insPayment/@part) [Required] - nota: <i>here the % value of each installment must be indicated</i></p> |
| payMode | <p>way or means of payment - base type: string, cod. table: T2 http://www.ebiz.enea.it/moda-ml/repository/codelist/draft/gc_T2.xml (XPath RAWSpinOrdChange/terms/payment/payMode) 0-1 (XPath RAWSpinOrdChange/terms/insPayment/payMode) 0-1</p> |
| payTerm | <p>code specifying the terms or time by which the payment must be done - base type: string, cod. table: T1 http://www.ebiz.enea.it/moda-ml/repository/codelist/draft/gc_T1.xml (XPath RAWSpinOrdChange/terms/payment/payTerm) 1-1 (XPath RAWSpinOrdChange/terms/insPayment/payTerm) 1-1</p> |
| payTermText | <p>free text specifying the terms by which the payment must be done (time/mode or means) - base type: string, max length: 250, (XPath RAWSpinOrdChange/terms/insPayment/payTermText) 1-1 (XPath RAWSpinOrdChange/terms/payment/payTermText) 1-1</p> |
| pcQty | <p>percent quantity of a raw material or of a specified component in a fabric or in a yarn - base type: decimal, min inclusive: 0, max inclusive: 100, fraction digits: 2, (XPath RAWSpinOrdChange/RSCXbody/RSCXitem/rawComponent/pcQty) 0-1</p> |
| pcTolerance | <p>percent deviation tolerated on the value of a measurement (it must have a plus or minus sign) - base type: decimal, min inclusive: 0, max inclusive: 100, total digits: 2, (XPath RAWSpinOrdChange/RSCXbody/RSCXitem/yarnMnfrOperation/yarnMachineSpecs/pcTolerance) 0-2 (XPath RAWSpinOrdChange/RSCXbody/RSCXitem/yarnProd/yarnSpecs/pcTolerance) 0-2</p> |

| | |
|-----------------|--|
| percCompos | <p>fiber rate in the product composition</p> <p>- base type: decimal, min inclusive: 0, max inclusive: 100, fraction digits: 2, (XPath RAWSpinOrdChange/RSCXbody/RSCXitem/yarnProd/yarnCompos/percCompos) 1-9</p> |
| person | <p>name of the contact person within a Party</p> <p>- base type: string, max length: 40, (XPath RAWSpinOrdChange/RSCXheader/buyer/person) 0-1 (XPath RAWSpinOrdChange/RSCXheader/thirdParty/person) 0-1 (XPath RAWSpinOrdChange/RSCXheader/subContractor/person) 0-1 (XPath RAWSpinOrdChange/RSCXbody/RSCXitem/thirdParty/person) 0-1</p> |
| @phone | <p>phone number of the contact person within a Party</p> <p>- base type: string, max length: 35, (XPath RAWSpinOrdChange/RSCXbody/RSCXitem/thirdParty/person/@phone) [Optional] (XPath RAWSpinOrdChange/RSCXheader/thirdParty/person/@phone) [Optional] (XPath RAWSpinOrdChange/RSCXheader/buyer/person/@phone) [Optional] (XPath RAWSpinOrdChange/RSCXheader/subContractor/person/@phone) [Optional]</p> |
| postCode | <p>code defining the postal zone</p> <p>- base type: string, max length: 10, (XPath RAWSpinOrdChange/RSCXheader/thirdParty/postCode) 0-1 (XPath RAWSpinOrdChange/RSCXbody/RSCXitem/thirdParty/postCode) 0-1 (XPath RAWSpinOrdChange/RSCXheader/subContractor/postCode) 0-1 (XPath RAWSpinOrdChange/RSCXheader/buyer/postCode) 0-1</p> |
| price | <p>unit price of the article, object or service specified</p> <p>- base type: decimal, min inclusive: 0, fraction digits: 4, (XPath RAWSpinOrdChange/RSCXbody/RSCXitem/price) 0-1</p> |
| @priceQualifier | <p>type of price with reference to discount and taxes</p> <p>- base type: string, cod. table: NT20 http://www.ebiz.enea.it/moda-ml/repository/codelist/draft/gc_NT20.xml (XPath RAWSpinOrdChange/RSCXbody/RSCXitem/price/@priceQualifier) [Optional] [Default= NET]</p> |
| @progr | <p>progressive number in the sequence</p> <p>- base type: positiveInteger, min inclusive: 1, (XPath RAWSpinOrdChange/terms/transInfo/@progr) [Optional] - nota: <i>Indicates the position of the leg in a sequence of transport legs.</i></p> |
| qty | <p>net quantity of the article or object correlated, qualified by the function of the document (ordering, delivering, ..) and by the context</p> <p>- base type: decimal, min inclusive: 0, fraction digits: 2, (XPath RAWSpinOrdChange/RSCXbody/RSCXitem/qty) 0-2</p> <hr/> <p>AAAA-WARNING! - text not AVAILABLE n. 245 - In=en (XPath RAWSpinOrdChange/RSCXbody/RSCXitem/rawComponent/qty) 1-2</p> <hr/> <p>AAAA-WARNING! - text not AVAILABLE n. 245 - In=en</p> |
| rawJob | <p>operation of a work cycle for raw material</p> <p>- base type: string, cod. table: T200 http://www.ebiz.enea.it/moda-ml/repository/codelist/draft/gc_T200.xml (XPath RAWSpinOrdChange/RSCXbody/RSCXitem/rawMnfrOperation/rawJob) 1-1</p> |
| @reelMat | <p>type of material of which a package for yarn is made</p> <p>- base type: string, cod. table: T30 http://www.ebiz.enea.it/moda-ml/repository/codelist/draft/gc_T30.xml (XPath RAWSpinOrdChange/RSCXbody/RSCXitem/yarnProd/yarnPack/yarnReel/@reelMat) [Optional]</p> |
| @reelType | <p>type of package used for a yarn product</p> <p>- base type: string, cod. table: T29 http://www.ebiz.enea.it/moda-ml/repository/codelist/draft/gc_T29.xml</p> |

| | |
|-------------------|---|
| | (XPath RAWSpinOrdChange/RSCXbody/RSCXitem/yarnProd/yarnPack/yarnReel/@reelType) [Required] |
| @role | Third Party role qualifier - base type: string, cod. table: NT2 http://www.ebiz.enea.it/moda-ml/repository/codelist/draft/gc_NT2.xml (XPath RAWSpinOrdChange/RSCXheader/thirdParty/@role) [Required] (XPath RAWSpinOrdChange/RSCXbody/RSCXitem/thirdParty/@role) [Required] |
| season | sale season; defined as: season (1 crt) + year (4 crt) - season: S/S=1 A/W=2 Spring=3 Summer=4 Autumn=5 Winter=6: for more than four seasons use alphabetic sequence: 1st season=A 2nd season=B etc.etc. - base type: string, max length: 15, (XPath RAWSpinOrdChange/RSCXbody/RSCXitem/refDoc/season) 0-1 - note: here indicates the season to which the referenced document belongs (XPath RAWSpinOrdChange/RSCXheader/refDoc/season) 0-1 - note: here indicates the season to which the referenced document belongs (XPath RAWSpinOrdChange/RSCXheader/season) 0-1 (XPath RAWSpinOrdChange/RSCXbody/RSCXitem/yarnMnfrOperation/refDoc/season) 0-1 - note: here indicates the season to which the referenced document belongs (XPath RAWSpinOrdChange/RSCXbody/RSCXitem/yarnProd/colorCardItem/refDoc/season) 0-1 - note: here indicates the season to which the referenced document belongs (XPath RAWSpinOrdChange/RSCXbody/RSCXitem/rawComponent/refDoc/season) 0-1 - note: here indicates the season to which the referenced document belongs (XPath RAWSpinOrdChange/RSCXbody/RSCXitem/rawMnfrOperation/refDoc/season) 0-1 - note: here indicates the season to which the referenced document belongs |
| @sender | qualifier that specifies the Party issuing of the document - base type: boolean, (XPath RAWSpinOrdChange/RSCXbody/RSCXitem/thirdParty/@sender) [Optional] - nota: This attribute is mandatory when the STYLESHEET must be used (XPath RAWSpinOrdChange/RSCXheader/buyer/@sender) [Optional] - nota: This attribute is mandatory when the STYLESHEET must be used (XPath RAWSpinOrdChange/RSCXheader/thirdParty/@sender) [Optional] - nota: This attribute is mandatory when the STYLESHEET must be used (XPath RAWSpinOrdChange/RSCXheader/subContractor/@sender) [Optional] - nota: This attribute is mandatory when the STYLESHEET must be used |
| @source | party who has provided the data - base type: string, cod. table: NT12 http://www.ebiz.enea.it/moda-ml/repository/codelist/draft/gc_NT12.xml (XPath RAWSpinOrdChange/RSCXbody/RSCXitem/yarnProd/yarnSpecs/specValue/@source) [Optional] (XPath RAWSpinOrdChange/RSCXbody/RSCXitem/yarnMnfrOperation/yarnMachineSpecs/specValue/@source) [Optional] |
| specValue | value requested for a property or a parameter that is measured - base type: decimal, (XPath RAWSpinOrdChange/RSCXbody/RSCXitem/yarnProd/yarnSpecs/specValue) 0-1 (XPath RAWSpinOrdChange/RSCXbody/RSCXitem/yarnMnfrOperation/yarnMachineSpecs/specValue) 0-1 |
| @standardObserver | CIE average chromatic response definition - base type: string, cod. table: T60 http://www.ebiz.enea.it/moda-ml/repository/codelist/draft/gc_T60.xml (XPath RAWSpinOrdChange/RSCXbody/RSCXitem/yarnProd/colorCardItem/CIELab/@standardObserver) [Optional] |

| | |
|--------------------|--|
| street | street and building number identifying a location - base type: string, max length: 80, (XPath RAWSpinOrdChange/RSCXheader/thirdParty/street) 0-1 (XPath RAWSpinOrdChange/RSCXbody/RSCXitem/thirdParty/street) 0-1 (XPath RAWSpinOrdChange/RSCXheader/buyer/street) 0-1 (XPath RAWSpinOrdChange/RSCXheader/subContractor/street) 0-1 |
| subCountry | short name or code of the sub-country entity - base type: string, max length: 9, (XPath RAWSpinOrdChange/RSCXheader/thirdParty/subCountry) 0-1 (XPath RAWSpinOrdChange/RSCXheader/subContractor/subCountry) 0-1 (XPath RAWSpinOrdChange/RSCXbody/RSCXitem/thirdParty/subCountry) 0-1 (XPath RAWSpinOrdChange/RSCXheader/buyer/subCountry) 0-1 |
| subDept | name or code of a contact department within a Party - base type: string, max length: 40, (XPath RAWSpinOrdChange/RSCXheader/buyer/subDept) 0-1 (XPath RAWSpinOrdChange/RSCXheader/thirdParty/subDept) 0-1 (XPath RAWSpinOrdChange/RSCXbody/RSCXitem/thirdParty/subDept) 0-1 (XPath RAWSpinOrdChange/RSCXheader/subContractor/subDept) 0-1 |
| taxCategory | duty or tax or fee category - base type: string, cod. table: T62 http://www.ebiz.enea.it/moda-ml/repository/codelist/draft/gc_T62.xml (XPath RAWSpinOrdChange/RSCXbody/RSCXitem/dtScheme/taxCategory) 0-1 (XPath RAWSpinOrdChange/terms/allowanceCharge/dtScheme/taxCategory) 0-1 |
| taxRate | duty or tax or fee percent rate - base type: string, (XPath RAWSpinOrdChange/terms/allowanceCharge/dtScheme/taxRate) 0-1 (XPath RAWSpinOrdChange/RSCXbody/RSCXitem/dtScheme/taxRate) 0-1 |
| @taxType | duty or tax or fee type - base type: string, cod. table: T61 http://www.ebiz.enea.it/moda-ml/repository/codelist/draft/gc_T61.xml (XPath RAWSpinOrdChange/RSCXbody/RSCXitem/dtScheme/@taxType) [Required] (XPath RAWSpinOrdChange/terms/allowanceCharge/dtScheme/@taxType) [Required] |
| tolerance | deviation tolerated on the value of a measurement (it must have a plus or minus sign) - base type: decimal, (XPath RAWSpinOrdChange/RSCXbody/RSCXitem/yarnProd/yarnSpecs/tolerance) 0-2 (XPath RAWSpinOrdChange/RSCXbody/RSCXitem/yarnMnfrOperation/yarnMachineSpecs/tolerance) 0-2 |
| transCondition | special condition of transport or special service requested to the Forwarder - base type: string, cod. table: T38 http://www.ebiz.enea.it/moda-ml/repository/codelist/draft/gc_T38.xml (XPath RAWSpinOrdChange/terms/transInfo/transCondition) 0-3 |
| transConditionText | free text description of the special condition of transport or special service requested to the Forwarder - base type: string, max length: 250, (XPath RAWSpinOrdChange/terms/transInfo/transConditionText) 0-1 |
| transMeans | means of transport, in general or referred to a specific leg - base type: string, cod. table: T40 http://www.ebiz.enea.it/moda-ml/repository/codelist/draft/gc_T40.xml (XPath RAWSpinOrdChange/terms/transInfo/transMeans) 0-1 |
| transMode | way of transport, in general or referred to the specified leg - base type: string, cod. table: T8 http://www.ebiz.enea.it/moda-ml/repository/codelist/draft/gc_T8.xml (XPath RAWSpinOrdChange/terms/transInfo/transMode) 1-1 |

| | |
|---------------------|--|
| @transReason | <p>reason for the transport</p> <ul style="list-style-type: none"> - base type: string, cod. table: NT11 http://www.ebiz.enea.it/moda-ml/repository/codelist/draft/gc_NT11.xml (XPath RAWSpinOrdChange/terms/transInfo/@transReason) [Optional] |
| @uid | <p>unique element identifier within the xml document</p> <ul style="list-style-type: none"> - base type: string, (XPath RAWSpinOrdChange/RSCXbody/RSCXitem/rawComponent/refDoc/attachment/@uid) [Optional] (XPath RAWSpinOrdChange/RSCXbody/RSCXitem/yarnProd/colorCardItem/refDoc/attachment/@uid) [Optional] (XPath RAWSpinOrdChange/RSCXbody/RSCXitem/refDoc/attachment/@uid) [Optional] (XPath RAWSpinOrdChange/RSCXbody/RSCXitem/rawMnfrOperation/refDoc/attachment/@uid) [Optional] (XPath RAWSpinOrdChange/RSCXheader/refDoc/attachment/@uid) [Optional] (XPath RAWSpinOrdChange/RSCXbody/RSCXitem/yarnMnfrOperation/refDoc/attachment/@uid) [Optional] |
| @um | <p>specification of the unit of measure</p> <ul style="list-style-type: none"> - base type: string, cod. table: NT7 http://www.ebiz.enea.it/moda-ml/repository/codelist/draft/gc_NT7.xml (XPath RAWSpinOrdChange/RSCXbody/RSCXitem/yarnMnfrOperation/yarnMachineSpecs/specValue/@um) [Optional] (XPath RAWSpinOrdChange/RSCXbody/RSCXitem/yarnProd/yarnPack/yarnReel/yarnReelH/@um) [Required] (XPath RAWSpinOrdChange/RSCXbody/RSCXitem/yarnProd/yarnPack/yarnReel/yarnReelQty/@um) [Required] (XPath RAWSpinOrdChange/RSCXbody/RSCXitem/yarnProd/yarnSpecs/pcTolerance/@um) [Optional] - nota: <i>to be used when it has to be soecified if the declared percentage is by weight, volume, etc...</i> (XPath RAWSpinOrdChange/RSCXbody/RSCXitem/yarnMnfrOperation/yarnMachineSpecs/pcTolerance/@um) [Optional] - nota: <i>to be used when it has to be soecified if the declared percentage is by weight, volume, etc...</i> (XPath RAWSpinOrdChange/RSCXbody/RSCXitem/qty/@um) [Required] (XPath RAWSpinOrdChange/RSCXbody/RSCXitem/price/@um) [Optional] - nota: <i>Unit of measure of the product to which the price is referred (price per meter)</i> (XPath RAWSpinOrdChange/RSCXbody/RSCXitem/rawComponent/qty/@um) [Required] (XPath RAWSpinOrdChange/RSCXbody/RSCXitem/yarnProd/yarnPack/yarnReel/yarnReelD/@um) [Required] (XPath RAWSpinOrdChange/RSCXbody/RSCXitem/yarnMnfrOperation/yarnMachineSpecs/tolerance/@um) [Required] (XPath RAWSpinOrdChange/RSCXbody/RSCXitem/yarnProd/yarnSpecs/tolerance/@um) [Required] (XPath RAWSpinOrdChange/terms/transInfo/netWeight/@um) [Required] (XPath RAWSpinOrdChange/terms/allowanceCharge/@um) [Optional] (XPath RAWSpinOrdChange/terms/transInfo/grossWeight/@um) [Required] (XPath RAWSpinOrdChange/RSCXbody/RSCXitem/rawComponent/pcQty/@um) [Optional] - nota: <i>to be used when it has to be soecified if the declared percentage is by weight, volume, etc...</i> (XPath RAWSpinOrdChange/RSCXbody/RSCXitem/yarnProd/yarnSpecs/experimValue/@um) [Optional] (XPath RAWSpinOrdChange/RSCXbody/RSCXitem/yarnProd/yarnSpecs/specValue/@um) [Optional] |

| | |
|---------------|---|
| uri | Uniform Resource Identifier (URI) that identifies the external object as an Internet resource - base type: normalizedString, (XPath RAWSpinOrdChange/RSCXbody/RSCXitem/refDoc/attachment/externalReference/uri) 1-1 (XPath RAWSpinOrdChange/RSCXbody/RSCXitem/rawMnfrOperation/refDoc/attachment/externalReference/uri) 1-1 (XPath RAWSpinOrdChange/RSCXbody/RSCXitem/yarnProd/colorCardItem/refDoc/attachment/externalReference/uri) 1-1 (XPath RAWSpinOrdChange/RSCXheader/refDoc/attachment/externalReference/uri) 1-1 (XPath RAWSpinOrdChange/RSCXbody/RSCXitem/yarnMnfrOperation/refDoc/attachment/externalReference/uri) 1-1 (XPath RAWSpinOrdChange/RSCXbody/RSCXitem/rawComponent/refDoc/attachment/externalReference/uri) 1-1 |
| @useProfile | use profile to which the present document is compliant if it was agreed by the parties. It is suggested a URI with reference to the firm or the URL of the profile. - base type: string, (XPath RAWSpinOrdChange/@useProfile) [Optional] |
| @VAT | VAT rate or code (DEPRECATED, use dtScheme element) - base type: string, cod. table: NT16 http://www.ebiz.enea.it/moda-ml/repository/codelist/draft/gc_NT16.xml (XPath RAWSpinOrdChange/RSCXheader/thirdParty/@VAT) [Optional] (XPath RAWSpinOrdChange/terms/allowanceCharge/@VAT) [Optional] (XPath RAWSpinOrdChange/RSCXbody/RSCXitem/thirdParty/@VAT) [Optional] (XPath RAWSpinOrdChange/RSCXbody/RSCXitem/lineN/@VAT) [Optional] - nota: <i>Deprecated, prefer dtScheme when available.</i> |
| @version | Dictionary version from which the instance has been created - base type: string, cod. table: NT100 http://www.ebiz.enea.it/moda-ml/repository/codelist/draft/gc_NT100.xml (XPath RAWSpinOrdChange/@version) [Optional] [Default= draft] |
| yarnChar | physical or mechanical parameter used to define a property of a yarn - base type: string, cod. table: T24 http://www.ebiz.enea.it/moda-ml/repository/codelist/draft/gc_T24.xml (XPath RAWSpinOrdChange/RSCXbody/RSCXitem/yarnProd/yarnSpecs/yarnChar) 1-1 |
| yarnCharText | free text describing the physical or mechanical parameter used to define a property of a yarn - base type: string, max length: 250, (XPath RAWSpinOrdChange/RSCXbody/RSCXitem/yarnProd/yarnSpecs/yarnCharText) 1-1 |
| yarnConeAngle | tapering angle of the cone on which a yarn is reeled - base type: positiveInteger, (XPath RAWSpinOrdChange/RSCXbody/RSCXitem/yarnProd/yarnPack/yarnReel/yarnConeAngle) 0-1 |
| yarnJob | operation of a work cycle for yarn - base type: string, cod. table: T201 http://www.ebiz.enea.it/moda-ml/repository/codelist/draft/gc_T201.xml (XPath RAWSpinOrdChange/RSCXbody/RSCXitem/yarnMnfrOperation/yarnJob) 1-1 |
| yarnJobTech | operation technology for yarn - base type: string, cod. table: T261 http://www.ebiz.enea.it/moda-ml/repository/codelist/draft/gc_T261.xml (XPath RAWSpinOrdChange/RSCXbody/RSCXitem/yarnMnfrOperation/yarnJobTech) 0-1 |

| | |
|------------------|---|
| yarnMachine | <p>machine used in an operation of a work cycle for yarn</p> <p>- base type: string, cod. table: T271</p> <p>http://www.ebiz.enea.it/moda-ml/repository/codelist/draft/gc_T271.xml</p> <p>(XPath RAWSpinOrdChange/RSCXbody/RSCXitem/yarnMnfrOperation/yarnMachine) 0-1</p> |
| yarnMachineParam | <p>setting parameter of a machine used in an operation of a work cycle for yarn</p> <p>- base type: string, cod. table: T281</p> <p>http://www.ebiz.enea.it/moda-ml/repository/codelist/draft/gc_T281.xml</p> <p>(XPath RAWSpinOrdChange/RSCXbody/RSCXitem/yarnMnfrOperation/yarnMachineSpecs/yarnMachineParam) 1-1</p> |
| yarnOutWrap | <p>code specifying the type of outer wrapping or packing of a yarn</p> <p>- base type: string, cod. table: T33</p> <p>http://www.ebiz.enea.it/moda-ml/repository/codelist/draft/gc_T33.xml</p> <p>(XPath RAWSpinOrdChange/RSCXbody/RSCXitem/yarnProd/yarnPack/yarnOutWrap) 0-1</p> |
| yarnOutWrapText | <p>free text specifying the type of outer wrapping or packing of a yarn</p> <p>- base type: string, max length: 250,</p> <p>(XPath RAWSpinOrdChange/RSCXbody/RSCXitem/yarnProd/yarnPack/yarnOutWrapText) 0-1</p> |
| yarnReelD | <p>diameter of the bobbin used for a yarn product</p> <p>- base type: decimal, min inclusive: 0, fraction digits: 2,</p> <p>(XPath RAWSpinOrdChange/RSCXbody/RSCXitem/yarnProd/yarnPack/yarnReel/yarnReelD) 0-1</p> |
| yarnReelH | <p>height of the bobbin used a yarn product</p> <p>- base type: decimal, min inclusive: 0, fraction digits: 2,</p> <p>(XPath RAWSpinOrdChange/RSCXbody/RSCXitem/yarnProd/yarnPack/yarnReel/yarnReelH) 0-1</p> |
| yarnReelQty | <p>quantity of yarn (by weight or length) wound upon a bobbin</p> <p>- base type: decimal, min inclusive: 0, fraction digits: 2,</p> <p>(XPath RAWSpinOrdChange/RSCXbody/RSCXitem/yarnProd/yarnPack/yarnReel/yarnReelQty) 0-2</p> |
| yarnReelWrap | <p>type of wrapping in which a package of yarn is wrapped</p> <p>- base type: string, cod. table: T32</p> <p>http://www.ebiz.enea.it/moda-ml/repository/codelist/draft/gc_T32.xml</p> <p>(XPath RAWSpinOrdChange/RSCXbody/RSCXitem/yarnProd/yarnPack/yarnInWrap/yarnReelWrap) 1-1</p> |

2.3 Suggested best practices

RAWSpinOrdChange/RSCXbody/RSCXitem/qty (net quantity of the article or object correlated, qualified by the function of the document (ordering, delivering, ..) and by the context)

this element can have two instances only if the units of measure are different

RAWSpinOrdChange/RSCXbody/RSCXitem/rawComponent/qty (net quantity of the article or object correlated, qualified by the function of the document (ordering, delivering, ..) and by the context)

this element can have two instances only if the units of measure are different

2.4 Enumeration tables

List of enumeration tables used in the XML document. You can find the corresponding codes at:
<http://www.ebiz-tcf.eu/moda-ml/imple/moda-ml-draft.asp?lingua=en&pag=6>

NT100 - eBIZ TCFUpstream version
NT11 - transport causal
NT12 - data source
NT16 - VAT rate or code
NT18 - message function
NT2 - third party qualifier
NT20 - price qualifier
NT29 - format of a date
NT3 - data format
NT37 - committed quantity qualifier
NT38 - colour test
NT5 - action code
NT6 - coding system owner/issuer
NT7 - unit of measure
T1 - terms of payment
T10 - ISO3166 - Country
T19 - fibre type
T2 - Modes of payment
T200 - type of job on raw material
T201 - type of job on yarn
T21 - type of document
T24 - yarn characteristics type
T261 - type of job technology for yarn
T271 - machine type for yarn operation
T281 - parameter type for yarn operation
T29 - type of yarn package
T3 - terms of delivery
T30 - support of yarn package - material
T32 - yarn reel wrapping type
T33 - yarn outer packing
T38 - transport conditions
T40 - type of transport means
T41 - type of Allowance or Charge
T44 - additional code type
T59 - CIE illuminant
T60 - CIE standard observer
T61 - duty or tax or fee type
T62 - duty or tax or fee category
T8 - Modes of Transport
T9 - ISO4217 - Currency

ACKNOWLEDGEMENT



This action is part of the eBIZ-4.0 project, which has received funding from the European Union's COSME Programme (2014 - 2020).

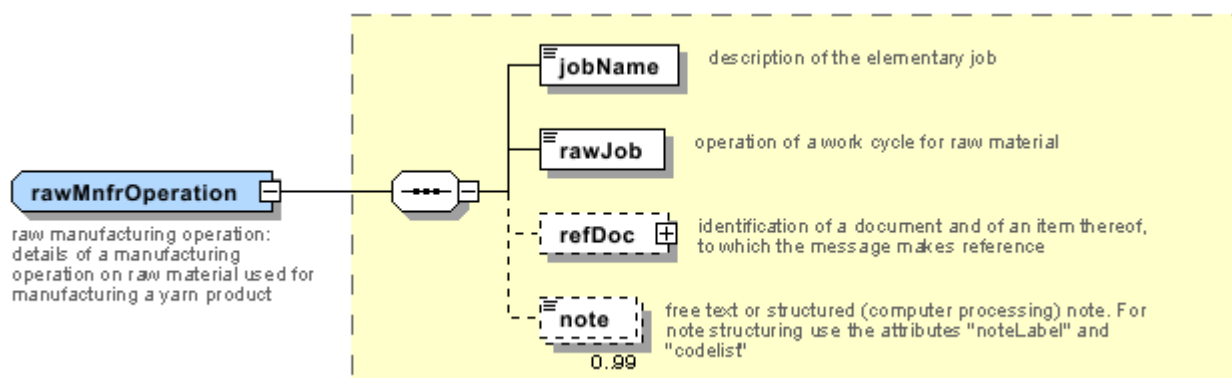
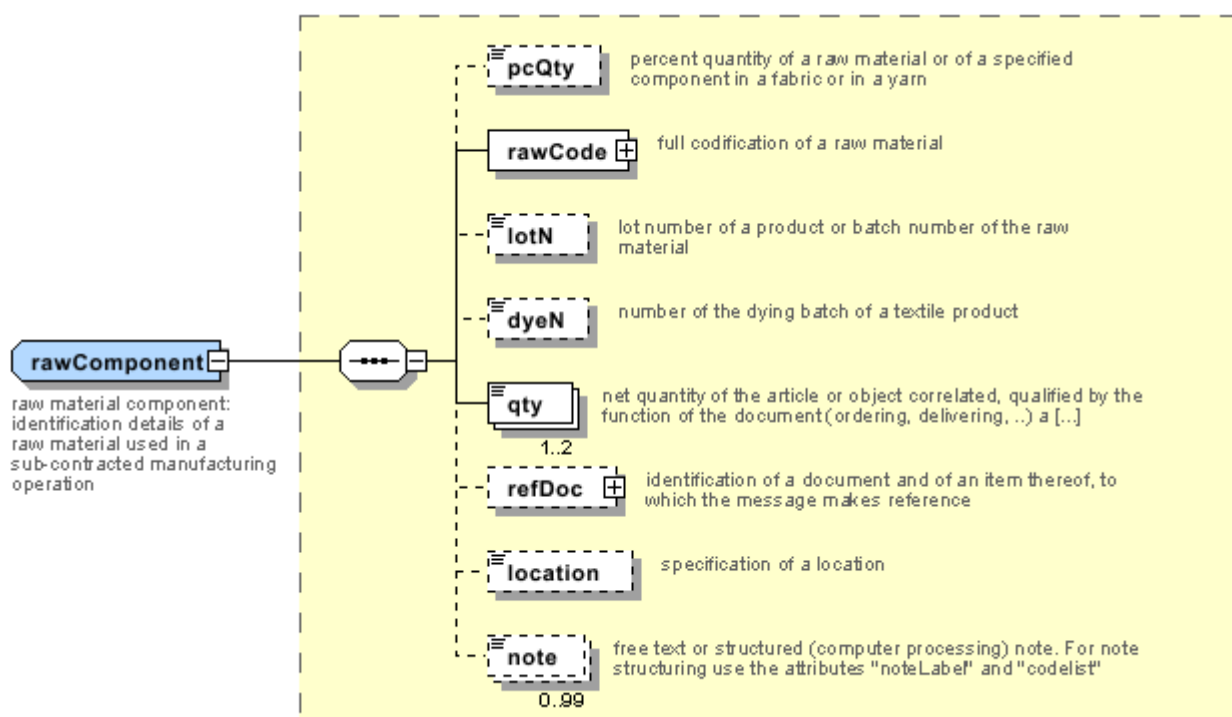
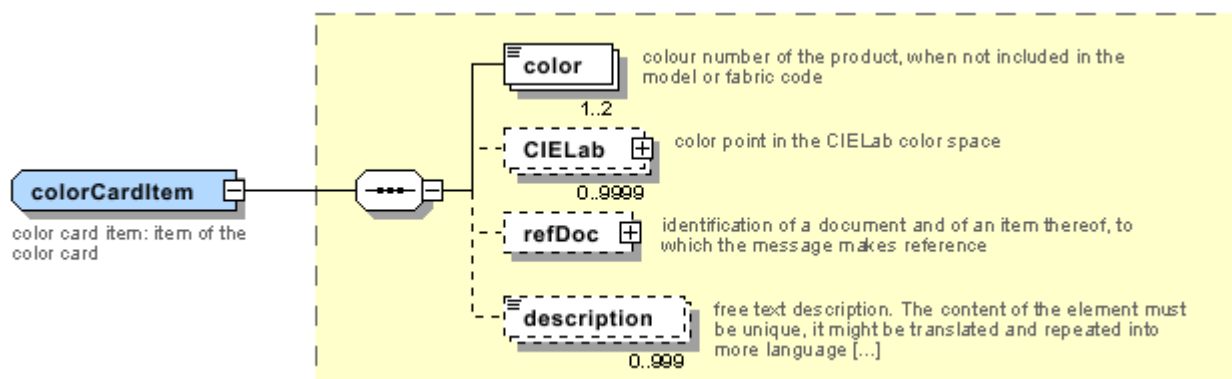
DISCLAIMER

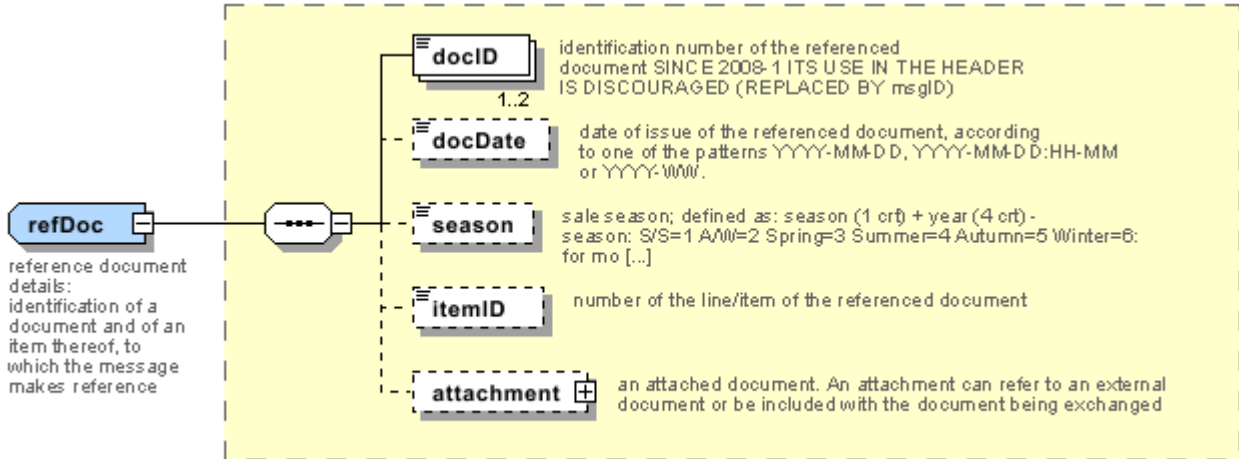
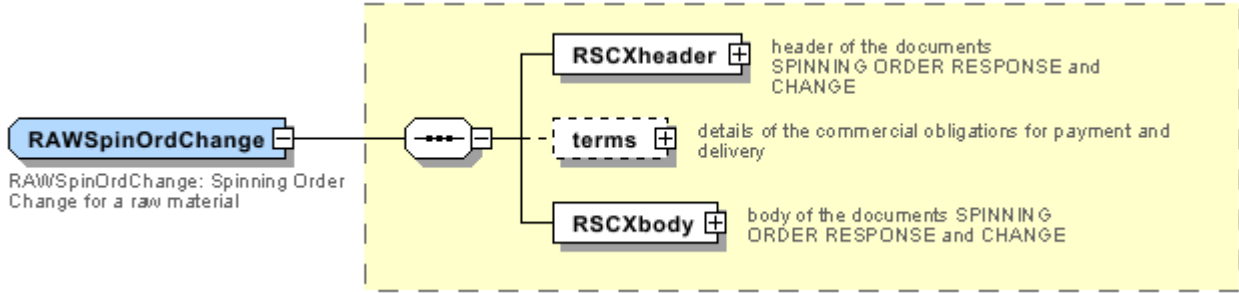
The content of this document represents the views of the authors only and is their sole responsibility; it cannot be considered to reflect the views of the European Commission and/or the Executive Agency for Small and Medium-sized Enterprises (EASME) or any other body of the European Union.

The European Commission and the Agency do not accept any responsibility for use that may be made of the information it contains.

Annex A

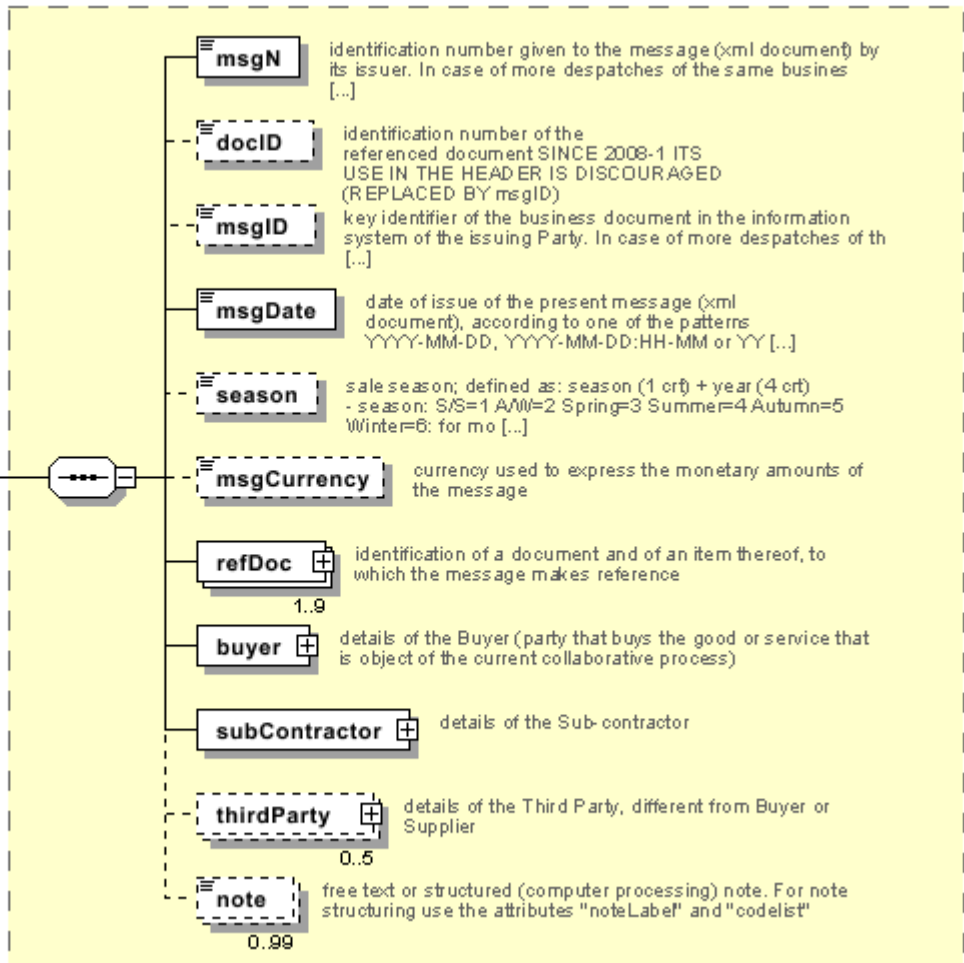
Representative images of the principal complex elements' structure.



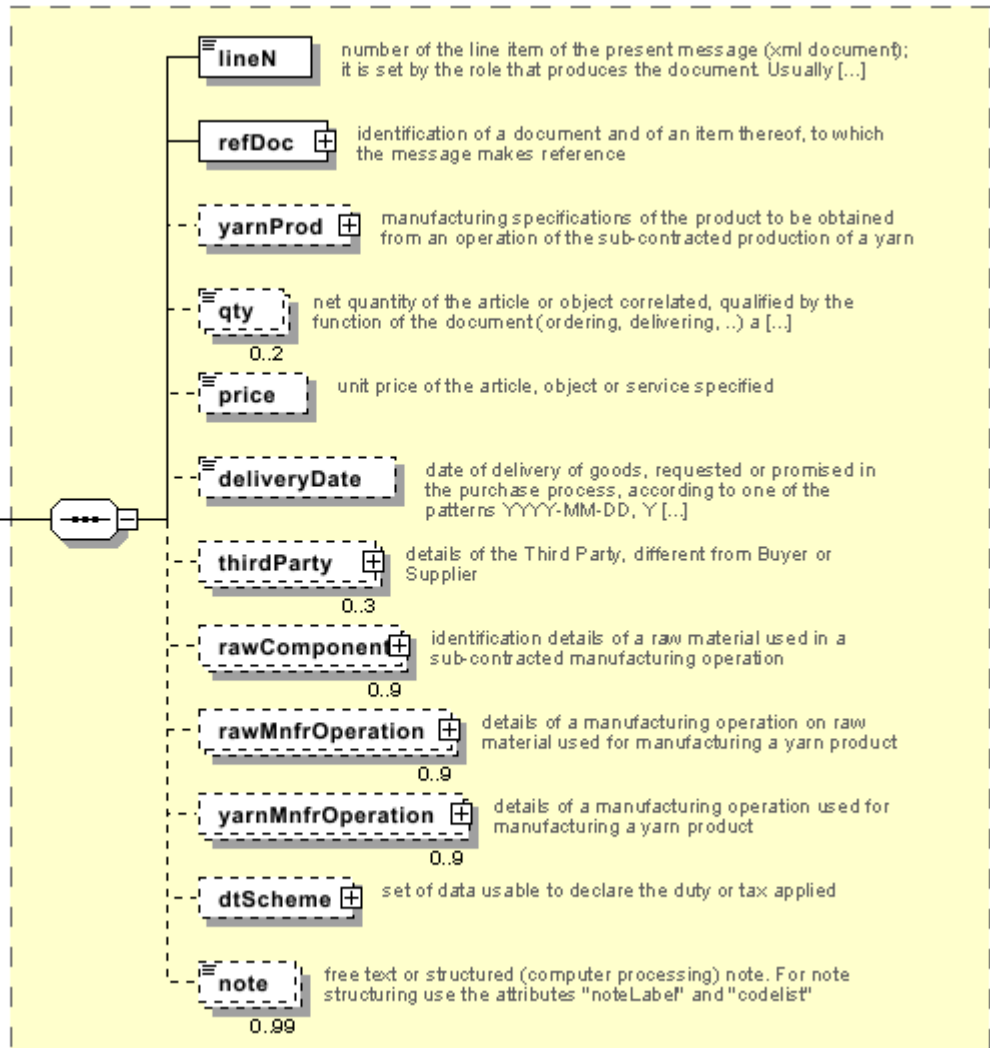


RSCXheader

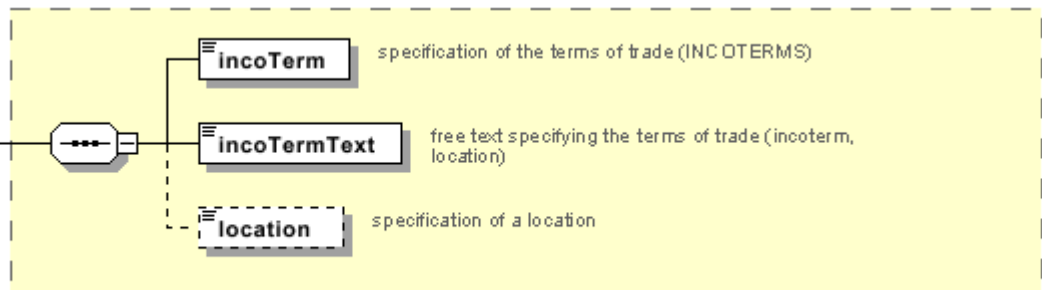
RSCX header:
header of the
documents
SPINNING ORDER
RESPONSE and
CHANGE

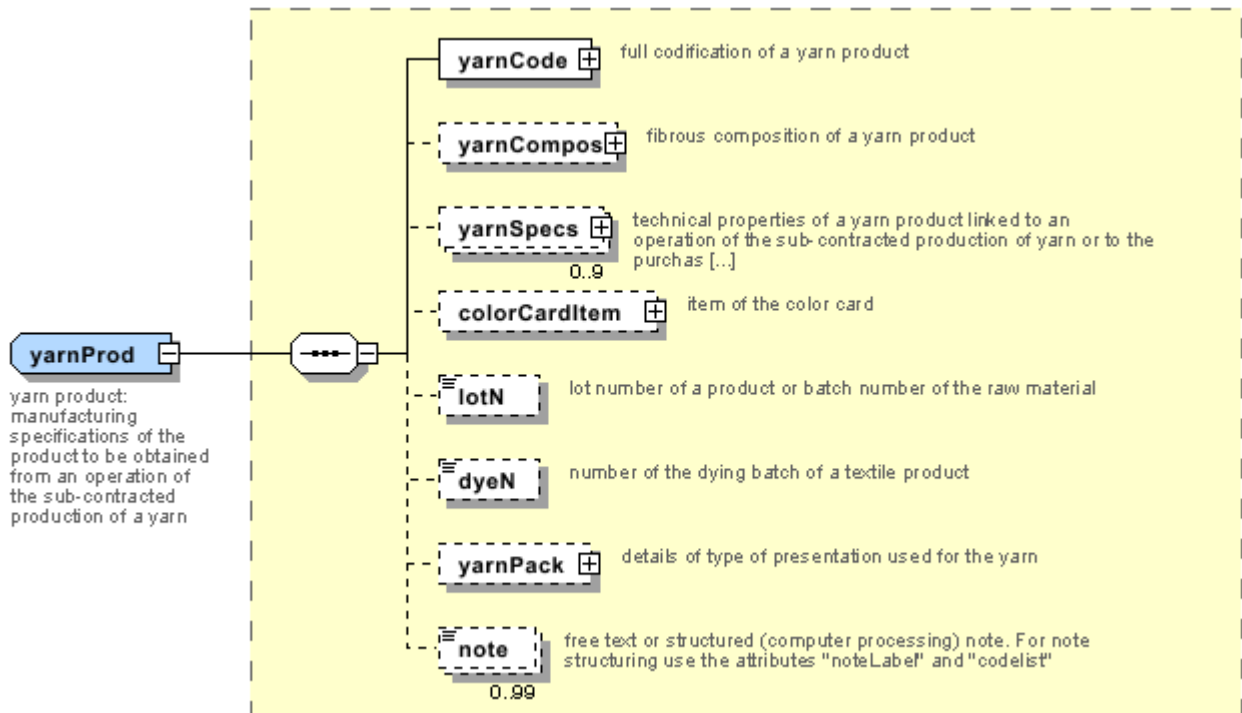


RSCXItem
 RSCX item:
 line of the
 documents
 SPINNING
 ORDER
 RESPONSE and
 CHANGE



trade
 Trade details:
 general terms of
 trade for the
 specified supply





Annex B

NT100 - eBIZ TCFUpstream version

dictionary version

Agency name: eBIZ

tabella cod.: NT100

File codes list (Generic code): http://www.ebiz.enea.it/moda-ml/repository/codelist/draft/gc_NT100.xml

| Code | Description | Adoption note | Date of insertion |
|--------|-------------|---------------|-------------------|
| 2013-1 | v2013-1 | | 01/07/2013 |
| 2018-1 | v2018-1 | | 04/11/2018 |
| draft | draft | | 08/09/2017 |

NT11 - transport causal

reason for the transport

Agency name: eBIZ

tabella cod.: NT11

File codes list (Generic code): http://www.ebiz.enea.it/moda-ml/repository/codelist/draft/gc_NT11.xml

| Code | Description | Adoption note | Date of insertion |
|------|-----------------------|---------------|-------------------|
| FOC | free of charge | | |
| FRW | return from re-works | | |
| FST | return from storage | | |
| FWW | return from view | | |
| FWK | return from works | | |
| IST | in storage | | |
| NWK | return non-worked | | |
| RJC | return from rejection | | |
| SEL | to sell | | |
| STO | to storage | | |
| VEW | to view | | |
| WRK | to works | | |

NT12 - data source

party who has provided the data

Agency name: eBIZ

tabella cod.: NT12

File codes list (Generic code): http://www.ebiz.enea.it/moda-ml/repository/codelist/draft/gc_NT12.xml

| Code | Description | Adoption note | Date of insertion |
|------|---------------------|---------------|-------------------|
| AC | internal test | | |
| CO | external test | | |
| CV | test after steaming | | |

NT16 - VAT rate or code

VAT rate or code (DEPRECATED, use dtScheme element)

tabella cod.: NT16

File codes list (Generic code): http://www.ebiz.enea.it/moda-ml/repository/codelist/draft/gc_NT16.xml

NT18 - message function

function performed by the present message with regards to the transmission

Agency name: eBIZ

tabella cod.: NT18

File codes list (Generic code): http://www.ebiz.enea.it/moda-ml/repository/codelist/draft/gc_NT18.xml

| Code | Description | Adoption note | Date of insertion |
|------|-------------------------------------|---------------|-------------------|
| CA | delete this document | | 01/07/2013 |
| CP | copy | | |
| OR | original | | |
| RC | re-transmission for data correction | | |
| RT | re-transmission | | |

NT2 - third party qualifier

Third Party role qualifier

Agency name: eBIZ

tabella cod.: NT2

File codes list (Generic code): http://www.ebiz.enea.it/moda-ml/repository/codelist/draft/gc_NT2.xml

| Code | Description | Adoption note | Date of insertion |
|------|--------------------------------------|---------------|-------------------|
| AG | Sales Agent | | |
| CO | Quality Controller | | |
| DC | Response to | | |
| DF | Invoicee | | |
| DI | Copy to (CC) | | 28/10/2014 |
| DM | Consignee | | |
| DP | Consignment address (Delivery Party) | | |
| IM | Importer | | |
| OR | Originator | | 10/09/2014 |
| SP | Forwarder | | |
| TX | Tax Representative | | |

NT20 - price qualifier

type of price with reference to discount and taxes

Agency name: eBIZ

tabella cod.: NT20

File codes list (Generic code): http://www.ebiz.enea.it/moda-ml/repository/codelist/draft/gc_NT20.xml

| Code | Description | Adoption note | Date of insertion |
|------|-----------------------|---------------|-------------------|
| GET | gross excluding taxes | | |
| GIT | gross including taxes | | |
| NET | net excluding taxes | | |
| NIT | net including taxes | | |

NT29 - format of a date

format used for the date

Agency name: eBIZ

tabella cod.: NT29

File codes list (Generic code): http://www.ebiz.enea.it/moda-ml/repository/codelist/draft/gc_NT29.xml

| Code | Description | Adoption note | Date of insertion |
|------|------------------|---------------|-------------------|
| D | YYYY-MM-DD | | |
| M | YYYY-MM-DD:HH-MM | | |
| W | YYYY-WW | | |

NT3 - data format

format of a string according to a customized User rule (local rule)

Agency name: eBIZ

tabella cod.: NT3

File codes list (Generic code): http://www.ebiz.enea.it/moda-ml/repository/codelist/draft/gc_NT3.xml

| Code | Description | Adoption note | Date of insertion |
|------|-----------------|---------------|-------------------|
| EN4 | GS1-GLN | | 01/07/2013 |
| MD | mutually agreed | | |

NT37 - committed quantity qualifier

specifies if the committed quantity can or can not include the loss in weight

Agency name: eBIZ

tabella cod.: NT37

File codes list (Generic code): http://www.ebiz.enea.it/moda-ml/repository/codelist/draft/gc_NT37.xml

| Code | Description | Adoption note | Date of insertion |
|------|---------------------------------|---------------|-------------------|
| NS | quantity can include losses | | |
| SA | quantity can not include losses | | |

NT38 - colour test

specification of colour test before the operation

tabella cod.: NT38

File codes list (Generic code): http://www.ebiz.enea.it/moda-ml/repository/codelist/draft/gc_NT38.xml

| Code | Description | Adoption note | Date of insertion |
|------|------------------|---------------|-------------------|
| 1 | only colour test | | |
| 2 | with colour test | | |

NT5 - action code

action performed by the present line upon the referenced document line

Agency name: eBIZ

tabella cod.: NT5

File codes list (Generic code): http://www.ebiz.enea.it/moda-ml/repository/codelist/draft/gc_NT5.xml

| Code | Description | Adoption note | Date of insertion |
|------|---|---------------|-------------------|
| A | CANCELLED | | |
| C | CONFIRMED | | |
| N | NEW ORDER LINE (created by an order change) | | |
| R | PROVISIONAL CONFIRMATION | | |
| S | DEFINITIVE CONFIRMATION | | |
| SA | suspension accepted | | |
| SN | suspension not accepted | | |
| SR | suspension request | | |
| V | AMENDED | | |

NT6 - coding system owner/issuer

code specifying the organisation who has created or owns the coding or numbering system

Agency name: eBIZ

tabella cod.: NT6

File codes list (Generic code): http://www.ebiz.enea.it/moda-ml/repository/codelist/draft/gc_NT6.xml

| Code | Description | Adoption note | Date of insertion |
|------|------------------------------|---------------|-------------------|
| CL | Customer/buyer | | |
| CO | Quality Controller | | |
| EN | GS1 (ex-EAN International) | | |
| ES | e-Stockflow | | |
| FO | Supplier | | |
| GS | GS1 | | 01/07/2013 |
| MF | VAT identifier | | |
| ML | Moda-ML | | |
| SP | Service Provider | | |

NT7 - unit of measure

specification of the unit of measure, it is a sub set of table Unit of Measure Code - UN/ECE REC 20 delivered by United Nations Economic Commission for Europe (UN/ECE)

Agency name: eBIZ / UN/ECE

tabella cod.: NT7

File codes list (Generic code): http://www.ebiz.enea.it/moda-ml/repository/codelist/draft/gc_NT7.xml

Other link: <http://docs.oasis-open.org/ubl/os-UBL-2.1/cl/gc/default/UnitOfMeasureCode-2.1.gc#>

| Code | Description | Adoption note | Date of insertion |
|---------|-------------------|---------------|-------------------|
| CMK | square centimetre | | 20/12/2017 |
| CMQ | cubic centimetre | | 20/12/2017 |
| CMT | centimetre | | |
| CNE | centiNewton | | |
| CO2TON | ton of CO2 | | 10/09/2014 |
| COUPLES | couples | | |
| DMQ | cubic decimetre | | |
| E37 | pixel | | 11/04/2018 |
| GRM | gram | | |
| HUR | hour | | |
| INH | inch | | |
| KGM | kilogram | | |
| KMT | kilometer | | |
| KWH | kilowatthours | | 10/09/2014 |
| LBR | pound | | |
| MIN | minute | | |
| MMK | centimetre | | 20/12/2017 |
| MMK | square millimetre | | 20/12/2017 |
| MTK | square metre | | 20/12/2017 |
| MTQ | cubic metre | | |
| MTR | metre | | |
| NMB | numero | | |
| ONZ | ounce | | |
| P1 | percent | | |
| PPM | parts per milion | | |

| | | | |
|-----|------------------|--|--|
| PZ | piece | | |
| RPM | rounds per metre | | |
| YRD | yard | | |

T1 - terms of payment

code specifying the terms or time by which the payment must be done

Agency name: eBIZ

tabella cod.: T1

File codes list (Generic code): http://www.ebiz.enea.it/moda-ml/repository/codelist/draft/gc_T1.xml

| Code | Description | Adoption note | Date of insertion |
|----------------|--|---------------|-------------------|
| ANTICIP | PAYMENT IN ADVANCE | | |
| BLCOLLECT/120D | BILL OF LADING 120 DD | | |
| BLCOLLECT/30D | BILL OF LADING 30 DD | | |
| BLCOLLECT/60D | BILL OF LADING 60 DD | | |
| BLCOLLECT/90D | BILL OF LADING 90 DD | | |
| CASH | PAYMENT ON DELIVERY | | |
| CASHINV | PAYMENT ON RECEIPT OF INVOICE | | |
| CREDOC/0D | DOCUMENTARY CREDIT FOR PAYM. AT SIGHT | | |
| CREDOC/120 | DOCUMENTARY CREDIT FOR PAYM. AT 120 DD | | |
| CREDOC/150 | DOCUMENTARY CREDIT FOR PAYM. AT 150 DD | | |
| CREDOC/180 | DOCUMENTARY CREDIT FOR PAYM. AT 180 DD | | |
| CREDOC/30D | DOCUMENTARY CREDIT FOR PAYM. AT 30 DD | | |
| CREDOC/45D | DOCUMENTARY CREDIT FOR PAYM. AT 45 DD | | |
| CREDOC/60 | DOCUMENTARY CREDIT FOR PAYM. AT 60 DD | | |
| CREDOC/90 | DOCUMENTARY CREDIT FOR PAYM. AT 90 DD | | |
| DEL/10 | PAYMENT AT 10 DD AFTER DELIVERY | | |
| DOCOLLECT/120D | DOCUMENTARY COLLECTION AT 120 DD | | |
| DOCOLLECT/30D | DOCUMENTARY COLLECTION AT 30 DD | | |
| DOCOLLECT/60D | DOCUMENTARY COLLECTION AT 60 DD | | |
| DOCOLLECT/90D | DOCUMENTARY COLLECTION AT 90 DD | | |
| INV/120D | PAYMENT AT 120 DD AFTER RECEIPT OF INVOICE | | |
| INV/150D | PAYMENT AT 150 DD AFTER RECEIPT OF INVOICE | | |
| INV/180D | PAYMENT AT 180 DD AFTER RECEIPT OF INVOICE | | |
| INV/30D | PAYMENT AT 30 DD AFTER RECEIPT OF INVOICE | | |

| | | | |
|----------------|---|--|--|
| INV/45D | PAYMENT AT 45 DD AFTER RECEIPT OF INVOICE | | |
| INV/60D | PAYMENT AT 60 DD AFTER RECEIPT OF INVOICE | | |
| INV/90D | PAYMENT AT 90 DD AFTER RECEIPT OF INVOICE | | |
| INVULTIMO | PAYMENT AT END MONTH RECEIPT INVOICE | | |
| INVULTIMO/10D | PAYMENT 10 DD AFTER END MONTH RECEIPT INVOICE | | |
| INVULTIMO/120D | PAYMENT 120 DD AFTER END MONTH RECEIPT INVOICE | | |
| INVULTIMO/150D | PAYMENT 150 DD AFTER END MONTH RECEIPT INVOICE | | |
| INVULTIMO/180D | PAYMENT 180 DD AFTER END MONTH RECEIPT INVOICE | | |
| INVULTIMO/240D | PAYMENT 240 DD AFTER END MONTH RECEIPT INVOICE | | |
| INVULTIMO/30D | PAYMENT 30 DD AFTER END MONTH RECEIPT INVOICE | | |
| INVULTIMO/45D | PAYMENT 45 DD AFTER END MONTH RECEIPT INVOICE | | |
| INVULTIMO/60D | PAYMENT 60 DD AFTER END MONTH RECEIPT INVOICE | | |
| INVULTIMO/90D | PAYMENT 90 DD AFTER END MONTH RECEIPT INVOICE | | |
| NOPAY | WITHOUT PAYMENT | | |
| RECREDOC/0D | IRREVOC. DOCUMENTARY CREDIT FOR PAYM. AT SIGHT | | |
| RECREDOC/120D | IRREVOC. DOCUMENTARY CREDIT FOR PAYM. AT 120 DD | | |
| RECREDOC/150D | IRREVOC. DOCUMENTARY CREDIT FOR PAYM. AT 150 DD | | |
| RECREDOC/180D | IRREVOC. DOCUMENTARY CREDIT FOR PAYM. AT 180 DD | | |
| RECREDOC/30D | IRREVOC. DOCUMENTARY CREDIT FOR PAYM. AT 30 DD | | |
| RECREDOC/45D | IRREVOC. DOCUMENTARY CREDIT FOR PAYM. AT 45 DD | | |
| RECREDOC/60D | IRREVOC. DOCUMENTARY CREDIT FOR PAYM. AT 60 DD | | |
| RECREDOC/90D | IRREVOC. DOCUMENTARY CREDIT FOR PAYM. AT 90 DD | | |
| ULTIMO | PAYMENT BY END MONTH OF DELIVERY | | |
| ULTIMO/10 | PAYMENT AT 10 DD AFTER END MONTH OF DELIVERY | | |

T10 - ISO3166 - Country

code of the nation

Agency name: ISO

tabella cod.: T10

File codes list (Generic code): http://www.ebiz.enea.it/moda-ml/repository/codelist/draft/gc_T10.xml

Table not printed: there are 239 elements, more than the maximum specified for printing: 99.

T19 - fibre type

type of fibre used in a textile product

Agency name: eBIZ

tabella cod.: T19

File codes list (Generic code): http://www.ebiz.enea.it/moda-ml/repository/codelist/draft/gc_T19.xml

| Code | Description | Adoption note | Date of insertion |
|-------------|--------------------|----------------------|--------------------------|
| AB | abaca | | 20/08/2018 |
| AC | acetate | | |
| AF | other fibres | | |
| AG | alginic fibre | | |
| AL | alfa | | 20/08/2018 |
| CA | hemp | | |
| CC | coir (coconut) | | 20/08/2018 |
| CL | chlorofibre | | |
| CO | cotton | | |
| CU | cuprous | | |
| EA | elastan | | |
| EL | Elastodiene | | 20/08/2018 |
| FL | fluorofibre | | |
| GI | broom | | 20/08/2018 |
| GL | textile glass | | |
| HA | hair | | 20/08/2018 |
| HE | henequen | | 20/08/2018 |
| HL | mixed linen | | |
| HL | cotton linen union | | 20/08/2018 |
| JU | jute | | |
| KE | kenaf | | 20/08/2018 |
| KP | kapoc | | 20/08/2018 |
| LI | linen | | |
| LY | lyocell | | 20/08/2018 |
| MA | modacrylic | | |
| MD | modal | | |
| ME | metallized | | |
| MG | maguey | | 20/08/2018 |
| PA | polyamide | | |

| | | | |
|----|---|--|------------|
| PB | polyureic | | |
| PC | acrylic | | |
| PE | polyethylene | | |
| PI | paper | | 20/08/2018 |
| PL | polyester | | |
| PM | polyimide | | |
| PP | polypropylene | | |
| PR | proteic | | |
| PU | polyurethane | | |
| RA | mamie | | 20/08/2018 |
| SE | silk | | |
| SI | sisal | | 20/08/2018 |
| SN | sun | | 20/08/2018 |
| TA | triacetate | | |
| TR | textile residues or unspecified composition | | 20/08/2018 |
| TV | trivinyll | | |
| VI | viscose | | |
| VY | vinylal | | |
| WA | angora | | |
| WB | beaver | | 20/08/2018 |
| WC | cashgora | | |
| WG | vicuna | | |
| WK | camel | | |
| WL | llama | | |
| WM | mohair | | |
| WN | lapin | | 20/08/2018 |
| WO | wool | | |
| WP | alpaca | | |
| WS | cashmere | | |
| WT | Oteer | | 20/08/2018 |
| WU | guanaco | | |
| WV | virgin wool | | |
| WY | yack | | |

T2 - Modes of payment

way or means of payment

Agency name: eBIZ

tabella cod.: T2

File codes list (Generic code): http://www.ebiz.enea.it/moda-ml/repository/codelist/draft/gc_T2.xml

| Code | Description | Adoption note | Date of insertion |
|------|------------------------------|---------------|-------------------|
| BB | bank transfer | | |
| IA | collection through Agent | | |
| IS | collection through Forwarder | | |
| RB | bank receipt | | |
| RD | remittance | | |
| SW | bank SWIFT | | |
| TR | bank draft | | |

T200 - type of job on raw material

operation of a work cycle for raw material

Agency name: eBIZ

tabella cod.: T200

File codes list (Generic code): http://www.ebiz.enea.it/moda-ml/repository/codelist/draft/gc_T200.xml

| Code | Description | Adoption note | Date of insertion |
|------|--------------|---------------|-------------------|
| 01 | dejarrare | | |
| 02 | to wash | | |
| 03 | to dry | | |
| 04 | to mix | | |
| 05 | to comb | | |
| 06 | to cut | | |
| 07 | to tear open | | |
| 08 | to beat | | |
| 09 | to carbonise | | |
| 10 | to dye | | |
| 11 | felting | | |
| 12 | to smoothen | | |
| 13 | vigoreux | | |

| | | | |
|----|--------------|--|--|
| 14 | angra | | |
| 15 | basolan | | |
| 16 | unshrinkable | | |
| 17 | to blend | | |

T201 - type of job on yarn

operation of a work cycle for yarn

Agency name: eBIZ

tabella cod.: T201

File codes list (Generic code): http://www.ebiz.enea.it/moda-ml/repository/codelist/draft/gc_T201.xml

| Code | Description | Adoption note | Date of insertion |
|------|------------------------|---------------|-------------------|
| 08 | to re-comb | | |
| 09 | to prepare | | |
| 10 | to card | | |
| 11 | to spin | | |
| 12 | to steam | | |
| 13 | to wind | | |
| 14 | doubling | | |
| 15 | to twist | | |
| 16 | to unwind | | |
| 17 | to singe | | |
| 18 | to raise | | |
| 19 | to reel | | |
| 20 | to re-wind | | |
| 21 | to shrink | | |
| 22 | to coat | | |
| 23 | to garnett | | |
| 24 | to print | | |
| 25 | to dye | | |
| 26 | to boil | | |
| 27 | to scour | | |
| 28 | to dry | | |
| 99 | other, see note if any | | 01/07/2013 |

T21 - type of document

type or class to which the referenced document belongs

Agency name: eBIZ

tabella cod.: T21

File codes list (Generic code): http://www.ebiz.enea.it/moda-ml/repository/codelist/draft/gc_T21.xml

| Code | Description | Adoption note | Date of insertion |
|-------------|------------------------------------|----------------------|--------------------------|
| BOR | blanket order | | 01/02/2018 |
| CAT | Price catalogue - tech sheet | | |
| CEO | Certificate of origin | | 13/04/2018 |
| CER | Certificate | | 13/04/2018 |
| COC | colour card | | |
| CRN | Credit note | | 08/09/2017 |
| CTO | Checking order | | 01/07/2013 |
| CTR | Contract | | |
| CXF | CxF3 file | | 01/07/2013 |
| DAD | Darn order | | |
| DDT | ddt | | |
| DEA | Despatch advise | | |
| DER | Despatch request | | |
| DR | Document Request | | 02/12/2014 |
| FOR | Forecast | | 02/12/2014 |
| GSO | Garment stock offer | | |
| GSX | Garment stock offer change | | |
| INV | Invoice | | |
| KCC | Knitting-Clothing Commission Order | | 02/12/2014 |
| KCI | Garment in Work Inventory Report | | 02/12/2014 |
| M2M | Made to Measure Production Order | | 02/12/2014 |
| MAS | Master marker | | |
| MCI | Visual merchandising instruction | | 13/04/2018 |
| OCH | Order change | | |
| OFF | Offer | | |
| ORD | Purchase order | | |
| ORP | Order response | | |

| | | | |
|-----|---|--|------------|
| OSR | order status request | | |
| OSS | Offer status | | 02/12/2014 |
| OST | Order status | | |
| OUR | our reference | | |
| QR | Quality Report | | 02/12/2014 |
| RAI | Raw Material in Work Inventory Report | | 02/12/2014 |
| RDC | Raw dyeing commission order | | |
| RDH | Raw dyeing order change | | |
| RDR | Raw dyeing order response | | |
| REA | Receiving advise | | |
| REQ | Request for Offer | | |
| RET | Return | | 02/12/2014 |
| RSC | Spinning commission order | | |
| RSH | Spinning order change | | |
| RSR | Spinning order response | | |
| SCL | process sheet | | |
| TFC | Textile dyeing-finishing commission order | | |
| TFX | Textile Dyeing-Finishing Order Change | | 02/12/2014 |
| TPC | Textile printing commission order | | |
| TPX | Textile Printing Order Change | | 02/12/2014 |
| TWI | Textile in work inventory | | |
| VMI | visual merchandising instructions | | 01/02/2018 |
| WAC | Warping commission order | | |
| WEC | Weaving commission order | | |
| YDC | Yarn dyeing commission order | | |
| YDH | Yarn dyeing order change | | |
| YDR | Yarn dyeing order response | | |
| YTC | Twisting commission order | | |
| YWI | Yarn in work inventory | | |

T24 - yarn characteristics type

physical or mechanical parameter used to define a property of a yarn

Agency name: eBIZ

tabella cod.: T24

File codes list (Generic code): http://www.ebiz.enea.it/moda-ml/repository/codelist/draft/gc_T24.xml

| Code | Description | Adoption note | Date of insertion |
|------|--|---------------|-------------------|
| ALL | elongation | | |
| AMIN | minimum yarn elongation | | |
| CV | CV | | |
| DE | delta E | | |
| NFIN | number of cases diameter less than X% | | |
| NGRO | number of cases diameter greater than X% | | |
| NOD | standard nub | | |
| NOS | Splicer nub | | |
| PLH | H hairiness | | |
| PLL | pilling | | |
| RES | tensile strength | | |
| RMIN | minimum tensile strength | | |
| RTR | shrinkage | | |
| SLA | fastness to light (ISO 105-B02) | | |
| SLB | fastness to water washing (ISO 105-C06) | | |
| SLC | fastness to dry washing (ISO 105-D01) | | |
| SLD | fastness to water drop (ISO 105-E07) | | |
| SLW | fastness to water (ISO 105-E01) | | |
| SLX | fastness to Xeno light (ISO 105-E01) | | |
| STW | S-twist | | |
| TIN | english count | | |
| TMT | metric count | | |
| TTX | tex count | | |
| ZTW | Z-twist | | |

T261 - type of job technology for yarn

operation technology for yarn

Agency name: eBIZ

tabella cod.: T261

File codes list (Generic code): http://www.ebiz.enea.it/moda-ml/repository/codelist/draft/gc_T261.xml

| Code | Description | Adoption note | Date of insertion |
|------|------------------------|---------------|-------------------|
| 01 | standard spinning | | |
| 02 | spinning frames | | |
| 03 | compact spinning | | |
| 04 | pims winding | | |
| 05 | cones winding | | |
| 06 | package dyeing | | |
| 07 | hank dyeing | | |
| 08 | | | |
| 09 | reactive dyeing | | |
| 10 | direct dyeing | | |
| 11 | natural dyeing | | |
| 12 | heat sensitive dyeing | | |
| 13 | light sensitive dyeing | | |
| 14 | pigments dyeing | | |
| 15 | shaded dyeing | | |
| 16 | tye and dye | | |
| 17 | | | |
| 18 | | | |
| 19 | | | |
| 20 | acid dyeing | | |
| 21 | pre-metallized dyeing | | |
| 22 | | | |
| 23 | basic dyeing | | |
| 99 | other, see note if any | | 01/07/2013 |

T271 - machine type for yarn operation

machine used in an operation of a work cycle for yarn

Agency name: eBIZ

tabella cod.: T271

File codes list (Generic code): http://www.ebiz.enea.it/moda-ml/repository/codelist/draft/gc_T271.xml

| Code | Description | Adoption note | Date of insertion |
|------|-------------|---------------|-------------------|
| 01 | RIETER | | |

| | | | |
|----|------------------------|--|------------|
| 02 | ZINZER | | |
| 03 | MURATA | | |
| 04 | SAVIO | | |
| 05 | TEXILMONTAGGIO | | |
| 06 | BIGAGLI | | |
| 07 | GALAN | | |
| 08 | GAUDINO | | |
| 99 | other, see note if any | | 01/07/2013 |

T281 - parameter type for yarn operation

setting parameter of a machine used in an operation of a work cycle for yarn

Agency name: eBIZ

tabella cod.: T281

File codes list (Generic code): http://www.ebiz.enea.it/moda-ml/repository/codelist/draft/gc_T281.xml

| Code | Description | Adoption note | Date of insertion |
|------|----------------|---------------|-------------------|
| 01 | ring diameter | | |
| 02 | package weight | | |
| 03 | yarn clearance | | |

T29 - type of yarn package

type of package (roll-up) used for a yarn product

Agency name: eBIZ

tabella cod.: T29

File codes list (Generic code): http://www.ebiz.enea.it/moda-ml/repository/codelist/draft/gc_T29.xml

| Code | Description | Adoption note | Date of insertion |
|------|-------------|---------------|-------------------|
| CIL | bobbin | | |
| CON | cone | | |
| HNK | hank, skein | | 01/07/2013 |
| MUF | muff, cake | | 01/07/2013 |
| SPL | spool | | |
| TUB | tube | | |
| XCO | supercone | | |

T3 - terms of delivery

specification of the terms of trade (INCOTERMS)

Agency name: Incoterms

tabella cod.: T3

File codes list (Generic code): http://www.ebiz.enea.it/moda-ml/repository/codelist/draft/gc_T3.xml

| Code | Description | Adoption note | Date of insertion |
|------|--|--|-------------------|
| CFR | COST AND FREIGHT (named port of destination) | | |
| CIF | COST, INSURANCE AND FREIGHT (named port of destination) | | |
| CIP | CARRIAGE AND INSURANCE PAID (named place of destination) | | |
| CPT | CARRIAGE PAID (named place of destination) | | |
| DAF | DELIVERED AT FRONTIER (named place) | according to Incoterms® 2010 it is obsolete | 08/12/2017 |
| DAP | Delivered at Place of destination (named place of destination) | according to Incoterms® 2010 | 08/12/2017 |
| DAT | Delivered at Terminal (named place of destination) | according to Incoterms® 2010 | 08/12/2017 |
| DDP | DELIVERED DUTY PAID (named place of destination) | | |
| DDU | DELIVERED DUTY UNPAID (named place of destination) | according to Incoterms® 2010 it is obsolete, use DAP | 08/12/2017 |
| DEQ | DELIVERED EX-QUAY (named port of destination) | according to Incoterms® 2010 it is obsolete | 08/12/2017 |
| DES | DELIVERED EX-SHIP (named port of destination) | according to Incoterms® 2010 it is obsolete | 08/12/2017 |
| EXW | EX WORKS (named place) | | |
| FAS | FREE ALONGSIDE SHIP (named port of shipment) | | |
| FCA | FREE CARRIER (named place) | | |
| FOB | FREE ON BOARD (named port of shipment) | | |

T30 - support of yarn package - material

type of material of which a package for yarn is made

Agency name: eBIZ

tabella cod.: T30

File codes list (Generic code): http://www.ebiz.enea.it/moda-ml/repository/codelist/draft/gc_T30.xml

| Code | Description | Adoption note | Date of insertion |
|------|-------------------------|---------------|-------------------|
| CA | cartoon | | |
| DY | for soft package dyeing | | |
| MT | metallic | | 01/07/2013 |
| PL | plastic | | |

T32 - yarn reel wrapping type

type of wrapping in which a package of yarn is wrapped

Agency name: eBIZ

tabella cod.: T32

File codes list (Generic code): http://www.ebiz.enea.it/moda-ml/repository/codelist/draft/gc_T32.xml

| Code | Description | Adoption note | Date of insertion |
|------|------------------|---------------|-------------------|
| XA | without bag | | |
| XB | paper bag | | 01/07/2013 |
| XD | plastic film bag | | |

T33 - yarn outer packing

code specifying the type of outer wrapping or packing of a yarn

Agency name: eBIZ

tabella cod.: T33

File codes list (Generic code): http://www.ebiz.enea.it/moda-ml/repository/codelist/draft/gc_T33.xml

| Code | Description | Adoption note | Date of insertion |
|------|----------------------|---------------|-------------------|
| 00 | | | |
| CB | cartoon box | | |
| CC | cartoon box 18 reels | | |
| CD | cartoon box 36 reels | | |

| | | | |
|----|--------------|--|--|
| XD | plastic film | | |
|----|--------------|--|--|

T38 - transport conditions

special condition of transport or special service requested to the Forwarder

tabella cod.: T38

File codes list (Generic code): http://www.ebiz.enea.it/moda-ml/repository/codelist/draft/gc_T38.xml

| Code | Description | Adoption note | Date of insertion |
|------|--|---------------|-------------------|
| ACC | arrange customs clearance | | |
| CAL | Carrier loads | | |
| CAU | Carrier unloads | | |
| CMR | CMR carnet | | |
| FFN | freight forwarders national conditions | | |
| FLD | special agreement for full loading | | |
| NCC | do not arrange customs clearance | | |
| PPB | packaging paid by Buyer | | |
| PPS | packaging paid by Supplier | | |
| PRO | proof of delivery | | |
| RFR | return container free | | |
| RPC | return container paid by Customer | | |
| RPS | return container paid by Supplier | | |
| SHL | Shipper loads | | |
| SHU | Consignee unloads | | |

T40 - type of transport means

means of transport, in general or referred to a specific leg

Agency name: eBIZ

tabella cod.: T40

File codes list (Generic code): http://www.ebiz.enea.it/moda-ml/repository/codelist/draft/gc_T40.xml

| Code | Description | Adoption note | Date of insertion |
|------|-------------|---------------|-------------------|
| AIR | aircraft | | |
| SHP | ship | | |
| TRU | truck | | |

| | | | |
|-----|-----|--|--|
| VAN | van | | |
|-----|-----|--|--|

T41 - type of Allowance or Charge

coded specification of an Allowance or Charge (elaborated from UNECE 4465)

Agency name: eBIZ

tabella cod.: T41

File codes list (Generic code): http://www.ebiz.enea.it/moda-ml/repository/codelist/draft/gc_T41.xml

| Code | Description | Adoption note | Date of insertion |
|------|-----------------------------|----------------------|-------------------|
| 1 | Agreed settlement | | 19/08/2018 |
| 10 | Costs for draft | | 19/08/2018 |
| 11 | Bank charges | DEPRECATED, use C BK | 19/08/2018 |
| 12 | Agent commission | | 19/08/2018 |
| 14 | Wrong delivery | | 19/08/2018 |
| 15 | Goods returned to agent | | 19/08/2018 |
| 16 | Goods partly returned | | 19/08/2018 |
| 17 | Transport damage | | 19/08/2018 |
| 19 | Trade discount | | 19/08/2018 |
| 2 | Below specification goods | | 19/08/2018 |
| 20 | Deduction for late delivery | DEPRECATED, use C WB | 19/08/2018 |
| 21 | Advertising costs | | 19/08/2018 |
| 22 | Customs duties | | 19/08/2018 |
| 23 | Telephone and postal costs | | 19/08/2018 |
| 24 | Repair costs | | 19/08/2018 |
| 25 | Attorney fees | | 19/08/2018 |

| | | | |
|----|----------------------------------|--|------------|
| 26 | Taxes | | 19/08/2018 |
| 3 | Damaged goods | | 19/08/2018 |
| 30 | Direct payment to seller | | 19/08/2018 |
| 32 | Goods not delivered | | 19/08/2018 |
| 33 | Late delivery | | 19/08/2018 |
| 35 | Goods returned | | 19/08/2018 |
| 36 | Invoice not received | | 19/08/2018 |
| 37 | Credit note to debtor/not to us | | 19/08/2018 |
| 38 | Deducted bonus | | 19/08/2018 |
| 39 | Deducted discount | | 19/08/2018 |
| 4 | Short delivery | | 19/08/2018 |
| 40 | Deducted freight costs | | 19/08/2018 |
| 41 | Deduction against other invoices | | 19/08/2018 |
| 42 | Credit balance(s) | | 19/08/2018 |
| 45 | Debit note to seller | | 19/08/2018 |
| 46 | Discount beyond terms | | 19/08/2018 |
| 48 | Allowance/charge error | | 19/08/2018 |
| 49 | Substitute product | | 19/08/2018 |
| 50 | Terms of sale error | | 19/08/2018 |
| 52 | Wrong invoice | | 19/08/2018 |
| 53 | Duplicate invoice | | 19/08/2018 |
| 54 | Weight error | | 19/08/2018 |

| | | | |
|---------|--|--|------------|
| 55 | Additional charge not authorized | | 19/08/2018 |
| 56 | Incorrect discount | | 19/08/2018 |
| 57 | Price change | | 19/08/2018 |
| 58 | Variation | | 19/08/2018 |
| 59 | Chargeback | | 19/08/2018 |
| 65 | Settlement to agent | | 19/08/2018 |
| 66 | Cash discount | | 19/08/2018 |
| 7 | Payment on account | | 19/08/2018 |
| 70 | Wrong monetary amount resulting from incorrect free goods quantity | | 19/08/2018 |
| 72 | Temporary special promotion | | 19/08/2018 |
| 73 | Difference in tax rate | | 19/08/2018 |
| 74 | Quantity discount | | 19/08/2018 |
| 75 | Promotion discount | | 19/08/2018 |
| 76 | Cancellation deadline passed | | 19/08/2018 |
| 77 | Pricing discount | | 19/08/2018 |
| 78 | Volume discount | | 19/08/2018 |
| 79 | Sundry discount | | 19/08/2018 |
| 8 | Returnable container charge included | | 19/08/2018 |
| 9 | Invoice error | | 19/08/2018 |
| AW A | bonus for works ahead of schedule | | |
| CBK | bank charges | | |
| CCR | servizio di corriere | | |
| CIN | insurance | | |
| CLB | labelling | | |

| | | | |
|---------|-----------------------------------|--|--|
| CPK | packing | | |
| CSP | special packing | | |
| CW B | penalty for works behind schedule | | |

T44 - additional code type

qualifier of the additional coding of a product

Agency name: eBIZ

tabella cod.: T44

File codes list (Generic code): http://www.ebiz.enea.it/moda-ml/repository/codelist/draft/gc_T44.xml

| Code | Description | Adoption note | Date of insertion |
|------|-----------------------------|---------------|-------------------|
| CC | colour card | | |
| CL | sales collection | | |
| CO | company identification code | | 08/09/2017 |
| DY | dye number | | |
| LT | lot number | | |
| MDI | Made in | | 08/09/2017 |
| MS | manufacturing state | | |
| PKG | packaging | | 09/09/2014 |
| PL | product line | | |
| RGB | RGB value | | |
| SE | selvedge code | | |

T59 - CIE illuminant

CIE light source

tabella cod.: T59

File codes list (Generic code): http://www.ebiz.enea.it/moda-ml/repository/codelist/draft/gc_T59.xml

| Code | Description | Adoption note | Date of insertion |
|------|---------------------------|---------------|-------------------|
| A | home tungsten CCT 2856K° | | 01/07/2013 |
| C | daylight CCT 6774K° | | 01/07/2013 |
| D50 | daylight CCT 5003Kà | | 01/07/2013 |
| D65 | solar standard CCT 6504K° | | 01/07/2013 |

| | | | |
|-----|---|--|------------|
| F11 | fluorescent narrow band CCT 4000K° (TL84) | | 01/07/2013 |
| F2 | cold white fluorescent CCT 4230K° | | 01/07/2013 |
| F7 | fluorescent broad band CCT 6500K° | | 01/07/2013 |

T60 - CIE standard observer

CIE average chromatic response definition

tabella cod.: T60

File codes list (Generic code): http://www.ebiz.enea.it/moda-ml/repository/codelist/draft/gc_T60.xml

| Code | Description | Adoption note | Date of insertion |
|------|-------------|---------------|-------------------|
| 31 | CIE-1931 | | 01/07/2013 |
| 64 | CIE-1964 | | 01/07/2013 |

T61 - duty or tax or fee type

duty or tax or fee type

Agency name: eBIZ

tabella cod.: T61

File codes list (Generic code): http://www.ebiz.enea.it/moda-ml/repository/codelist/draft/gc_T61.xml

| Code | Description | Adoption note | Date of insertion |
|------|-------------------|---------------|-------------------|
| BOL | stamp duty | | 01/07/2013 |
| CUD | customs duty | | 01/07/2013 |
| ENV | environmental tax | | 01/07/2013 |
| FRE | no tax | | 01/07/2013 |
| OTH | other tax charges | | 01/07/2013 |
| VAT | value added tax | | 01/07/2013 |

T62 - duty or tax or fee category

duty or tax or fee category

Agency name: eBIZ

tabella cod.: T62

File codes list (Generic code): http://www.ebiz.enea.it/moda-ml/repository/codelist/draft/gc_T62.xml

| Code | Description | Adoption note | Date of insertion |
|------|---------------------------|---------------|-------------------|
| AA | lower than standard rate | | 01/07/2013 |
| E | tax not applicable | | 01/07/2013 |
| H | higher than standard rate | | 01/07/2013 |
| O | outside scope of tax | | 01/07/2013 |
| S | standard rate | | 01/07/2013 |
| Z | zero rate goods | | 01/07/2013 |

T8 - Modes of Transport

way of transport, in general or referred to the specified leg

Agency name: eBIZ

tabella cod.: T8

File codes list (Generic code): http://www.ebiz.enea.it/moda-ml/repository/codelist/draft/gc_T8.xml

| Code | Description | Adoption note | Date of insertion |
|------|------------------------|---------------|-------------------|
| 1 | MARITIME TRANSPORT | | |
| 10 | Courier | | 01/07/2013 |
| 2 | RAIL TRANSPORT | | |
| 3 | ROAD TRANSPORT | | |
| 4 | AIR TRANSPORT | | |
| 5 | MAIL | | |
| 6 | AIR + SHIP TRANSPORT | | |
| 8 | INLAND WATER TRANSPORT | | |
| 9 | MODE UNKNOWN | | |

T9 - ISO4217 - Currency

currency code

Agency name: ISO

tabella cod.: T9

File codes list (Generic code): http://www.ebiz.enea.it/moda-ml/repository/codelist/draft/gc_T9.xml

Table not printed: there are 205 elements, more than the maximum specified for printing: 99.