



<http://www.ebiz-tcf.eu>

**DRAFT**

**IMPLEMENTATION GUIDE**

**TRANSACTION "TEXTILE DARNING RETURN"**

Version: draft

Date of release: 17/5/2019

Document code: G013

technical Documentation: <http://www.ebiz.enea.it>

XML Schemas repository: <http://www.ebiz.enea.it/moda-ml/repository/schema/draft/default.asp>

Guides repository: <http://www.ebiz.enea.it/moda-ml/repository/guide/draft/default.asp>

Guide filename: G013-eBIZ-TextileDarningReturn.pdf

## 0. PREMISE

This document contains a proposal for the updating and extension of eBIZ specifications starting from the eBIZ version released as CEN CWA 16667 in 2013. Under the name of 'Draft version' it is reported the result of an extensive work of analysis and consultation aimed at developing and maintaining eBIZ specifications.

In particular, the content of this proposal is the result of various activities, mainly those carried out within the framework of the **eBIZ 4.0 project** funded by the European Commission, call COS-DESIGN-2015-3-06, topic COS-2015-DESIGN-2.

The technical contents are backwards compatible with the latest official published version.

## 1. BUSINESS DESCRIPTION

### 1.1 Scope

The present guide has been issued to assist the companies of the Textile-Clothing sector in the implementation of the standard XML document type "Textile DARN RETURN", providing all the instruction required for its use in any context of e-commerce between Fabric Producers and Darn Subcontractors. All the rules required for the construction and validation of the document are embedded into the specific XML-Schema, which is detailed in section "Implementation guide".

### 1.2 Generalities

The document "Textile Darn Return" is used by the Darn Subcontractor to specify the darning operations performed on each fabric piece and possibly the worktimes invoiced.

The document can refer to one or more pieces and can be used either in conjunction with the "Textile Despatch Advise" (1 DA : 1 Return) or independently.

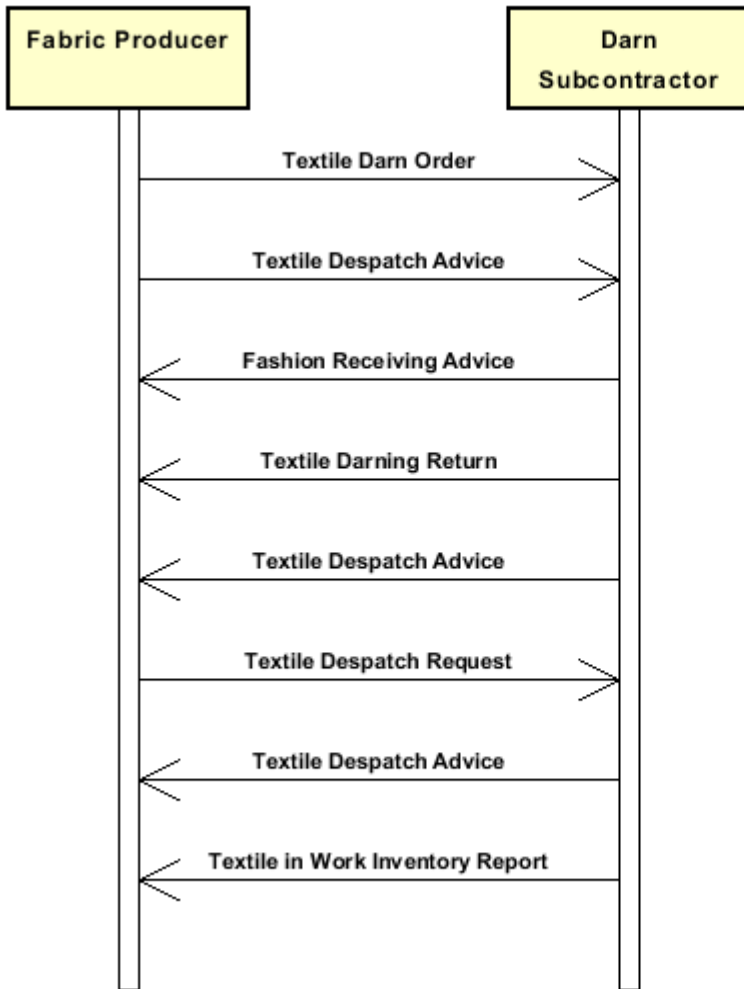
In the first instance the reference to the Despatch Advise must be given in the Header; in the second each piece can have at item level its reference to the transport document with which was returned to the Client.

EACH ITEM CONTAINS A JOB REPORTING FOR ONE OR MORE PIECES OF THE SAME TEXTILE ARTICLE.

The Job cost reporting can be calculated from a metre rate or from an hourly rate times a given operation time or from a combination of both.

### 1.3. Possible scenario

Subcontracted fabric darning



## 2. IMPLEMENTATION GUIDE

### 2.1 General structure of XML document

All the business data that can be exchanged through this class of documents are shown in the following "document structure", that provides a simplified vision of the Schema.

In particular:

- the two numbers following each element define its "cardinality" (minimum and maximum number of occurrences); the minimum equal zero indicates that the element is optional, the minimum greater than zero indicates that is mandatory;
- the bold character denotes the complex elements (aggregates of simple elements) that were built for the sake of functionality and re-usability of some complex informations sets. The child elements in each parent element are easily spotted as "indented";
- the symbol "@" denotes an attribute of the preceding element; here "the usage indicator (optional, required, ...)" is shown in square brackets.

### Structure

#### TEXDarnReturn

*@msgfunction [Optional] [Default= OR]*

*@version [Optional] [Default= draft]*

*@useProfile [Optional]*

```
| DRheader 1-1
| | msgN 1-1
| | - choose -
| | msgID 0-1
| | - or -
| | docID 0-1
| | @numberingOrg [Optional]
| | - end choose -
| | msgDate 1-1
| | @dateForm [Optional]
| | refDoc 0-9
| | @docType [Required]
| | | docID 1-2
| | | @numberingOrg [Optional]
| | | docDate 0-1
| | | @dateForm [Optional]
| | | season 0-1
| | | @numberingOrg [Optional]
| | | @codeList [Optional]
| | | @listName [Optional]
| | | @listVersion [Optional]
| | | itemID 0-1
| | | attachment 0-1
| | | @uid [Optional]
| | | | fileName 0-1
| | | | @numberingOrg [Optional]
| | | | binaryObject 0-1
| | | | @format [Optional]
| | | | @mime [Optional]
| | | | @encoding [Optional]
| | | | @characterSet [Optional]
| | | | externalReference 0-99
| | | | | uri 1-1
| | | | | @isURL [Optional] [Default= true]
| | | | | mimeTypeCode 0-1
| | | | | formatCode 0-1
| | | | | encodingCode 0-1
```

```

| | | | characterSetCode 0-1
| buyer 1-1
| @logo [Optional]
| @sender [Optional]
| | id 1-1
| | | @numberingOrg [Optional]
| | additionalIdentifier 0-9
| | | @numberingOrg [Optional]
| | | @idQualifier [Optional]
| | legalName 0-1
| | dept 0-1
| | subDept 0-1
| | person 0-1
| | | @email [Optional]
| | | @phone [Optional]
| | | @fax [Optional]
| | street 0-1
| | city 0-1
| | subCountry 0-1
| | country 0-1
| | postCode 0-1
| subContractor 1-1
| @sender [Optional]
| | id 1-1
| | | @numberingOrg [Optional]
| | legalName 0-1
| | dept 0-1
| | subDept 0-1
| | person 0-1
| | | @email [Optional]
| | | @phone [Optional]
| | | @fax [Optional]
| | street 0-1
| | city 0-1
| | subCountry 0-1
| | country 0-1
| | postCode 0-1
| thirdParty 0-1
| @VAT [Optional]
| @role [Required]
| @sender [Optional]
| | id 1-1
| | | @numberingOrg [Optional]
| | legalName 0-1
| | dept 0-1
| | subDept 0-1
| | person 0-1
| | | @email [Optional]
| | | @phone [Optional]
| | | @fax [Optional]
| | street 0-1
| | city 0-1
| | subCountry 0-1
| | country 0-1
| | postCode 0-1
| note 0-99
| | @numberingOrg [Optional]
| | @codeList [Optional]
| | @noteLabel [Optional]

```

| **DRbody 1-1**

**DRitem 1-unbounded***@transReason [Optional]*

lineN 1-1

*@VAT [Optional]***texCode 0-1***@numberingOrg [Optional]*

art 1-1

*@numberingOrg [Optional]**@codeList [Optional]**@listName [Optional]**@listVersion [Optional]*

pattern 0-1

*@numberingOrg [Optional]**@codeList [Optional]**@listName [Optional]**@listVersion [Optional]*

color 0-1

*@numberingOrg [Optional]**@codeList [Optional]**@listName [Optional]**@listVersion [Optional]*

added 0-9

*@numberingOrg [Optional]**@addType [Optional]*

description 0-unbounded

*@ln [Optional]*

qty 1-2

*@um [Required]**- choose -***pieceChain 1-1**

serialN 1-9

*@numberingOrg [Optional]**@idQualifier [Optional]*

pieceLength 0-1

*@um [Optional] [Default= MTR]*

pieceWidth 0-1

*@um [Optional] [Default= CMT]*

pieceWeight 0-1

*@um [Optional] [Default= KGM]*

lotN 0-1

*@numberingOrg [Optional]*

dyeN 0-1

*@numberingOrg [Optional]*

packageN 0-1

*@numberingOrg [Optional]**@packageContainerN [Optional]***piecePack 0-1***- choose -*

| piecePackText 1-1

*- or -*

| pieceInnWrap1 1-1

| pieceInnWrap2 0-1

| pieceOutWrap 0-1

*- end choose -***pieceCut 0-99**

serialN 1-9

*@numberingOrg [Optional]**@idQualifier [Optional]*

pieceLength 0-1

*@um [Optional] [Default= MTR]*

pieceWeight 0-1

```

| | | | @um [Optional] [Default= KGM]
- or -
| | | piece 1-1
| | | @endUse [Optional]
| | | serialN 0-9
| | | @numberingOrg [Optional]
| | | @idQualifier [Optional]
| | | EPC 0-1
| | | @numberingOrg [Optional]
| | | @TID [Optional]
| | | totFault 0-1
| | | pieceStatus 0-1
| | | pieceLength 0-1
| | | @um [Optional] [Default= MTR]
| | | pieceWidth 0-1
| | | @um [Optional] [Default= CMT]
| | | pieceCutWidth 0-1
| | | @um [Optional] [Default= CMT]
| | | pieceWeight 0-1
| | | @um [Optional] [Default= KGM]
| | | pieceWeightM 0-1
| | | @um [Optional] [Default= GRM]
| | | grossWeight 0-1
| | | @um [Required]
| | | pieceAllow 0-1
| | | @um [Required]
| | | lotN 0-2
| | | @numberingOrg [Optional]
| | | dyeN 0-1
| | | @numberingOrg [Optional]
| | | mixMatch 0-1
| | | @numberingOrg [Optional]
| | | packageN 0-1
| | | @numberingOrg [Optional]
| | | @packageContainerN [Optional]
| | | piecePack 0-1
| | | - choose -
| | | | piecePackText 1-1
| | | - or -
| | | | pieceInnWrap1 1-1
| | | | pieceInnWrap2 0-1
| | | | pieceOutWrap 0-1
| | | - end choose -
- end choose -
| | | pieceMap 0-1
| | | @source [Required]
| | | totFault 1-1
| | | pieceFault 0-99
| | | @faultRank [Required]
| | | @faultShape [Optional]
| | | - choose -
| | | | fabricFaultText 1-1
| | | - or -
| | | | fabricFault 1-1
| | | - end choose -
| | | | warpStart 1-1
| | | | @um [Optional] [Default= MTR]
| | | | warpEnd 0-1
| | | | @um [Optional] [Default= MTR]
| | | | weftStart 0-1
| | | | @um [Optional] [Default= CMT]

```

```

| | | | weftEnd 0-1
| | | | @um [Optional] [Default= CMT]
| | | | pieceAllow 0-1
| | | | @um [Required]
| | | | note 0-99
| | | | @numberingOrg [Optional]
| | | | @codeList [Optional]
| | | | @noteLabel [Optional]
| | | | refDoc 0-1
| | | | @docType [Required]
| | | | docID 1-2
| | | | @numberingOrg [Optional]
| | | | docDate 0-1
| | | | @dateForm [Optional]
| | | | season 0-1
| | | | @numberingOrg [Optional]
| | | | @codeList [Optional]
| | | | @listName [Optional]
| | | | @listVersion [Optional]
| | | | itemID 0-1
| | | | attachment 0-1
| | | | @uid [Optional]
| | | | | fileName 0-1
| | | | | @numberingOrg [Optional]
| | | | | binaryObject 0-1
| | | | | @format [Optional]
| | | | | @mime [Optional]
| | | | | @encoding [Optional]
| | | | | @characterSet [Optional]
| | | | | externalReference 0-99
| | | | | | uri 1-1
| | | | | | @isURL [Optional] [Default= true]
| | | | | | mimeTypeCode 0-1
| | | | | | formatCode 0-1
| | | | | | encodingCode 0-1
| | | | | | characterSetCode 0-1
| | | | | darnJobReport 0-9
| | | | | | job 1-1
| | | | | | jobTime 0-1
| | | | | | jobTimeBasis 0-1
| | | | | | @um [Required]
| | | | | | darnJobPrice 0-2
| | | | | | | jobPrice 0-1
| | | | | | | @currency [Optional]
| | | | | | | priceBasis 0-1
| | | | | | | @um [Required]
| | | | | note 0-99
| | | | | @numberingOrg [Optional]
| | | | | @codeList [Optional]
| | | | | @noteLabel [Optional]
| | | | MOtotals 0-1
| | | | | totQty 2-2
| | | | | @um [Required]

```



## 2.2 Detailed description of document elements

Following tables show all elements (complex and simple) used in this document. Description includes: 1) element's information: xml tag, name, brief description, data type and syntax constraints; 2) information about use of the element in a particular position in the document: xpath and possible associated notes.

### 2.2.1 Complex elements (Aggregate Business Information Entities)

Complex elements are those elements whose content is composed of other elements (childs). Complex elements are alphabetically ordered.

<b>attachment</b>	an attached document. An attachment can refer to an external document or be included with the document being exchanged (XPath <code>TEXDarnReturn/DRheader/refDoc/attachment</code> ) 0-1 (XPath <code>TEXDarnReturn/DRbody/DRitem/refDoc/attachment</code> ) 0-1
<b>buyer</b>	details of the Buyer (party that buys the good or service that is object of the current collaborative process) - base type: Nad, (XPath <code>TEXDarnReturn/DRheader/buyer</code> ) 1-1
<b>darnJobPrice</b>	pricing of a darn work (XPath <code>TEXDarnReturn/DRbody/DRitem/darnJobReport/darnJobPrice</code> ) 0-2
<b>darnJobReport</b>	job report for the execution of a darn work (XPath <code>TEXDarnReturn/DRbody/DRitem/darnJobReport</code> ) 0-9 - note: <i>here is the job report for the fabric pieces identified by its serial number (serialIN)</i>
<b>DRbody</b>	body of the document TEXTILES DARN RETURN (XPath <code>TEXDarnReturn/DRbody</code> ) 1-1
<b>DRheader</b>	header of the TEXTILES DARN RETURN (XPath <code>TEXDarnReturn/DRheader</code> ) 1-1
<b>DRitem</b>	line item of the document TEXTILES DARN RETURN (XPath <code>TEXDarnReturn/DRbody/DRitem</code> ) 1-unbounded
<b>externalReference</b>	details about an external object, such as a document stored at a remote location (XPath <code>TEXDarnReturn/DRheader/refDoc/attachment/externalReference</code> ) 0-99 (XPath <code>TEXDarnReturn/DRbody/DRitem/refDoc/attachment/externalReference</code> ) 0-99
<b>MOtotals</b>	monetary and quantity totals of the Order (XPath <code>TEXDarnReturn/MOtots</code> ) 0-1
<b>piece</b>	Identification data and measurement of the fabric piece. (XPath <code>TEXDarnReturn/DRbody/DRitem/piece</code> ) 1-1
<b>pieceChain</b>	identification data and measurements of a chain of pieces still to be cut (XPath <code>TEXDarnReturn/DRbody/DRitem/pieceChain</code> ) 1-1
<b>pieceCut</b>	identification data and measurements of a fabric piece belonging to a chain still to be cut (XPath <code>TEXDarnReturn/DRbody/DRitem/pieceChain/pieceCut</code> ) 0-99 - note: <i>here the data of the pieces making up the chain should be specified</i>
<b>pieceFault</b>	classification, position and allowance of the piece faults. The reference point (0,0) for the position is the lower left corner of the piece (selvedge excluded) (XPath <code>TEXDarnReturn/DRbody/DRitem/pieceMap/pieceFault</code> ) 0-99
<b>pieceMap</b>	mapping of the piece faults: type, rank and location (XPath <code>TEXDarnReturn/DRbody/DRitem/pieceMap</code> ) 0-1

<b>piecePack</b>	type of wrapping or packing of the fabric pieces (XPath TEXDarnReturn/DRbody/DRitem/pieceChain/piecePack) 0-1 (XPath TEXDarnReturn/DRbody/DRitem/piece/piecePack) 0-1
<b>refDoc</b>	identification of a document and of an item thereof, to which the message makes reference (XPath TEXDarnReturn/DRheader/refDoc) 0-9 (XPath TEXDarnReturn/DRbody/DRitem/refDoc) 0-1 - note: <i>here the transport document can be identified</i>
<b>subContractor</b>	details of the Sub-contractor - base type: Nad, (XPath TEXDarnReturn/DRheader/subContractor) 1-1
<b>texCode</b>	full codification of the textile product (XPath TEXDarnReturn/DRbody/DRitem/texCode) 0-1
<b>thirdParty</b>	details of the Third Party, different from Buyer or Supplier - base type: Nad, (XPath TEXDarnReturn/DRheader/thirdParty) 0-1 - note: <i>it can be used to specify the Party to whom the subcontractor has sent the goods (role="DM")</i>

## 2.2.2 Simple elements (Basic Business Information Entities)

Simple elements are those elements whose content is characterized by a data type plus a domain of possible values. Simple elements are alphabetically ordered.

<b>added</b>	additional code of the product (complementing the formers) - base type: string, max length: 80, (XPath TEXDarnReturn/DRbody/DRitem/texCode/added) 0-9 - note: <i>here an additional codification (see table T44) can be specified</i>
<b>additionalIdentifier</b>	additional identification code of a Party, for example customs registries or others - base type: string, max length: 15, (XPath TEXDarnReturn/DRheader/buyer/additionalIdentifier) 0-9 - note: <i>identifiers for example for exports, such as MID (Manufacturer Identification Code), EORI (E.O.R.I. - Economic Operator Registration and Identification)</i>
<b>@addType</b>	qualifier of the additional coding of a product - base type: string, cod. table: T44 <a href="http://www.ebiz.enea.it/moda-ml/repository/codelist/draft/gc_T44.xml">http://www.ebiz.enea.it/moda-ml/repository/codelist/draft/gc_T44.xml</a> (XPath TEXDarnReturn/DRbody/DRitem/texCode/added/@addType) [Optional] - note: <i>addType allows the clarification of the meaning of the added element content; it is strongly suggested to use it always.</i>
<b>art</b>	article number of the product - base type: string, max length: 80, (XPath TEXDarnReturn/DRbody/DRitem/texCode/art) 1-1 - note: <i>can be used either for the base-article (excluding pattern/colour) or for the SKU</i>
<b>binaryObject</b>	a binary large object containing an attached document - base type: base64Binary, (XPath TEXDarnReturn/DRbody/DRitem/refDoc/attachment/binaryObject) 0-1 (XPath TEXDarnReturn/DRheader/refDoc/attachment/binaryObject) 0-1
<b>@characterSet</b>	the character set of the binary object if the mime type is text - base type: normalizedString, (XPath TEXDarnReturn/DRheader/refDoc/attachment/binaryObject/@characterSet) [Optional]

	(XPath TEXDarnReturn/DRbody/DRitem/refDoc/attachment/binaryObject/@characterSet) [Optional]
characterSetCode	the character set of an external document - base type: normalizedString, (XPath TEXDarnReturn/DRheader/refDoc/attachment/externalReference/characterSetCode) 0-1 (XPath TEXDarnReturn/DRbody/DRitem/refDoc/attachment/externalReference/characterSetCode) 0-1
city	name of the city (town, village) - base type: string, max length: 40, (XPath TEXDarnReturn/DRheader/thirdParty/city) 0-1 (XPath TEXDarnReturn/DRheader/buyer/city) 0-1 (XPath TEXDarnReturn/DRheader/subContractor/city) 0-1
@codeList	it specifies the URL where the list of codes used to make an instance of the element can be found - base type: string, max length: 255, (XPath TEXDarnReturn/DRbody/DRitem/texCode/art/@codeList) [Optional] - nota: <i>this attribute should be ALTERNATIVE to the others</i> (XPath TEXDarnReturn/DRbody/DRitem/refDoc/season/@codeList) [Optional] (XPath TEXDarnReturn/DRbody/DRitem/texCode/pattern/@codeList) [Optional] - nota: <i>this attribute should be ALTERNATIVE to the others</i> (XPath TEXDarnReturn/DRbody/DRitem/texCode/color/@codeList) [Optional] - nota: <i>this attribute could be used as alternative to the others</i> (XPath TEXDarnReturn/DRheader/note/@codeList) [Optional] - nota: <i>must be used to provide (URL) the list of codes used in "noteLabel"</i> (XPath TEXDarnReturn/DRbody/DRitem/pieceMap/pieceFault/note/@codeList) [Optional] - nota: <i>must be used to provide (URL) the list of codes used in "noteLabel"</i> (XPath TEXDarnReturn/DRheader/refDoc/season/@codeList) [Optional] (XPath TEXDarnReturn/DRbody/DRitem/note/@codeList) [Optional] - nota: <i>must be used to provide (URL) the list of codes used in "noteLabel"</i>
color	colour number of the product, when not included in the model or fabric code - base type: string, max length: 15, (XPath TEXDarnReturn/DRbody/DRitem/texCode/color) 0-1
country	code of the nation - base type: string, cod. table: T10 <a href="http://www.ebiz.enea.it/moda-ml/repository/codelist/draft/gc_T10.xml">http://www.ebiz.enea.it/moda-ml/repository/codelist/draft/gc_T10.xml</a> (XPath TEXDarnReturn/DRheader/subContractor/country) 0-1 (XPath TEXDarnReturn/DRheader/buyer/country) 0-1 (XPath TEXDarnReturn/DRheader/thirdParty/country) 0-1
@currency	currency in which a specified monetary data is expressed - base type: string, cod. table: T9 <a href="http://www.ebiz.enea.it/moda-ml/repository/codelist/draft/gc_T9.xml">http://www.ebiz.enea.it/moda-ml/repository/codelist/draft/gc_T9.xml</a> (XPath TEXDarnReturn/DRbody/DRitem/darnJobReport/darnJobPrice/jobPrice/@currency) [Optional] - nota: <i>Currency referred by the price.</i>
@dateForm	format used for the date - base type: string, cod. table: NT29 <a href="http://www.ebiz.enea.it/moda-ml/repository/codelist/draft/gc_NT29.xml">http://www.ebiz.enea.it/moda-ml/repository/codelist/draft/gc_NT29.xml</a> (XPath TEXDarnReturn/DRbody/DRitem/refDoc/docDate/@dateForm) [Optional] (XPath TEXDarnReturn/DRheader/refDoc/docDate/@dateForm) [Optional] (XPath TEXDarnReturn/DRheader/msgDate/@dateForm) [Optional]
dept	name or code of a contact department within a Party - base type: string, max length: 40, (XPath TEXDarnReturn/DRheader/thirdParty/dept) 0-1 (XPath TEXDarnReturn/DRheader/subContractor/dept) 0-1 (XPath TEXDarnReturn/DRheader/buyer/dept) 0-1

description	<p>free text description. The content of the element must be unique, it might be translated and repeated into more languages (thus no more than one instance for each language).</p> <p>- base type: string, max length: 250,  (XPath TEXDarnReturn/DRbody/DRitem/texCode/description) 0-unbounded</p> <p>- note: <i>Product description</i></p>
docDate	<p>date of issue of the referenced document, according to one of the patterns YYYY-MM-DD, YYYY-MM-DD:HH-MM or YYYY-WW.</p> <p>- base type: string,  (XPath TEXDarnReturn/DRheader/refDoc/docDate) 0-1  (XPath TEXDarnReturn/DRbody/DRitem/refDoc/docDate) 0-1</p>
docID	<p>identification number of the referenced document SINCE 2008-1 ITS USE IN THE HEADER IS DISCOURAGED (REPLACED BY msgID)</p> <p>- base type: string, max length: 80,  (XPath TEXDarnReturn/DRbody/DRitem/refDoc/docID) 1-2  (XPath TEXDarnReturn/DRheader/docID) 0-1  (XPath TEXDarnReturn/DRheader/refDoc/docID) 1-2</p>
@docType	<p>type or class to which the referenced document belongs</p> <p>- base type: string, cod. table: T21  <a href="http://www.ebiz.enea.it/moda-ml/repository/codelist/draft/gc_T21.xml">http://www.ebiz.enea.it/moda-ml/repository/codelist/draft/gc_T21.xml</a>  (XPath TEXDarnReturn/DRbody/DRitem/refDoc/@docType) [Required]  (XPath TEXDarnReturn/DRheader/refDoc/@docType) [Required]</p>
dyeN	<p>number of the dyeing batch of a textile product</p> <p>- base type: string, max length: 15,  (XPath TEXDarnReturn/DRbody/DRitem/piece/dyeN) 0-1  (XPath TEXDarnReturn/DRbody/DRitem/pieceChain/dyeN) 0-1</p>
@email	<p>electronic mail address of the contact person within a Party</p> <p>- base type: string, max length: 250,  (XPath TEXDarnReturn/DRheader/buyer/person/@email) [Optional]  (XPath TEXDarnReturn/DRheader/subContractor/person/@email) [Optional]  (XPath TEXDarnReturn/DRheader/thirdParty/person/@email) [Optional]</p>
@encoding	<p>specifies the decoding algorithm of the binary object</p> <p>- base type: normalizedString,  (XPath TEXDarnReturn/DRheader/refDoc/attachment/binaryObject/@encoding) [Optional]  (XPath TEXDarnReturn/DRbody/DRitem/refDoc/attachment/binaryObject/@encoding) [Optional]</p>
encodingCode	<p>the encoding/decoding algorithm used with the external object</p> <p>- base type: normalizedString,  (XPath TEXDarnReturn/DRheader/refDoc/attachment/externalReference/encodingCode) 0-1  (XPath TEXDarnReturn/DRbody/DRitem/refDoc/attachment/externalReference/encodingCode) 0-1</p>
@endUse	<p>specifies the final use of the fabric</p> <p>- base type: string, cod. table: NT4  <a href="http://www.ebiz.enea.it/moda-ml/repository/codelist/draft/gc_NT4.xml">http://www.ebiz.enea.it/moda-ml/repository/codelist/draft/gc_NT4.xml</a>  (XPath TEXDarnReturn/DRbody/DRitem/piece/@endUse) [Optional]</p>
EPC	<p>serial identifier used for tracing a physical item with RFID technology</p> <p>- base type: string,  (XPath TEXDarnReturn/DRbody/DRitem/piece/EPC) 0-1</p> <p>- note: <i>the use of this element is DEPRECATED, use the appropriate elements (serialN)</i></p>
fabricFault	<p>code specifying the type or class of fabric fault</p> <p>- base type: string, cod. table: T12  <a href="http://www.ebiz.enea.it/moda-ml/repository/codelist/draft/gc_T12.xml">http://www.ebiz.enea.it/moda-ml/repository/codelist/draft/gc_T12.xml</a>  (XPath TEXDarnReturn/DRbody/DRitem/pieceMap/pieceFault/fabricFault) 1-1</p> <p>- note: <i>here the MODA-ML codelist must be used.</i></p>

fabricFaultText	free text describing the type or class of the fabric fault - base type: string, max length: 250, (XPath TEXDarnReturn/DRbody/DRitem/pieceMap/pieceFault/fabricFaultText) 1-1 - note: <i>here the text or proprietary code mutually agreed must be used</i>
@faultRank	ranking class of the fabric fault - base type: string, cod. table: NT13 <a href="http://www.ebiz.enea.it/moda-ml/repository/codelist/draft/gc_NT13.xml">http://www.ebiz.enea.it/moda-ml/repository/codelist/draft/gc_NT13.xml</a> (XPath TEXDarnReturn/DRbody/DRitem/pieceMap/pieceFault/@faultRank) [Required]
@faultShape	shape classification of the fabric fault - base type: string, cod. table: NT14 <a href="http://www.ebiz.enea.it/moda-ml/repository/codelist/draft/gc_NT14.xml">http://www.ebiz.enea.it/moda-ml/repository/codelist/draft/gc_NT14.xml</a> (XPath TEXDarnReturn/DRbody/DRitem/pieceMap/pieceFault/@faultShape) [Optional]
@fax	fax number of the contact person within a Party - base type: string, max length: 35, (XPath TEXDarnReturn/DRheader/thirdParty/person/@fax) [Optional] (XPath TEXDarnReturn/DRheader/buyer/person/@fax) [Optional] (XPath TEXDarnReturn/DRheader/subContractor/person/@fax) [Optional]
fileName	unique identifier (name) of the file - base type: string, max length: 255, (XPath TEXDarnReturn/DRbody/DRitem/refDoc/attachment/fileName) 0-1 (XPath TEXDarnReturn/DRheader/refDoc/attachment/fileName) 0-1
@format	the format of the binary content - base type: string, (XPath TEXDarnReturn/DRbody/DRitem/refDoc/attachment/binaryObject/@format) [Optional] (XPath TEXDarnReturn/DRheader/refDoc/attachment/binaryObject/@format) [Optional]
formatCode	the format of the external object - base type: normalizedString, (XPath TEXDarnReturn/DRbody/DRitem/refDoc/attachment/externalReference/formatCode) 0-1 (XPath TEXDarnReturn/DRheader/refDoc/attachment/externalReference/formatCode) 0-1
grossWeight	the gross weight, declared for transport or customs purpose - base type: decimal, min inclusive: 0, fraction digits: 2, (XPath TEXDarnReturn/DRbody/DRitem/piece/grossWeight) 0-1 - note: <i>gross Weight is related to the weight of the piece after packing.</i>
id	primary identification code of a Party; it is recommended the format: nation code (ISO 3166) + VAT identification number (11 crt), with the qualifier "numberingOrg"= MF - base type: string, max length: 15, (XPath TEXDarnReturn/DRheader/buyer/id) 1-1 (XPath TEXDarnReturn/DRheader/subContractor/id) 1-1 (XPath TEXDarnReturn/DRheader/thirdParty/id) 1-1
@idQualifier	Qualification of the identifier. - base type: string, (XPath TEXDarnReturn/DRheader/buyer/additionalIdentifier/@idQualifier) [Optional] - nota: <i>this attribute should be used when the numberingOrg attribute is not enough to declare the type of identifier</i> (XPath TEXDarnReturn/DRbody/DRitem/pieceChain/pieceCut/serialN/@idQualifier) [Optional] - nota: <i>this attribute should be used when the numberingOrg attribute is not enough to declare the type of serial identifier</i> (XPath TEXDarnReturn/DRbody/DRitem/piece/serialN/@idQualifier) [Optional] - nota: <i>this attribute should be used when the numberingOrg attribute is not enough to declare the type of serial identifier</i>

	(XPath TEXDarnReturn/DRbody/DRitem/pieceChain/serialN/@idQualifier) [Optional] - nota: <i>this attribute should be used when the numberingOrg attribute is not enough to declare the type of serial identifier</i>
@isURL	it indicates if the referred element is an URL (true) or not (false) - base type: boolean, (XPath TEXDarnReturn/DRheader/refDoc/attachment/externalReference/uri/@isURL) [Optional] [Default= true] - nota: <i>usage of URLs is recommended</i> (XPath TEXDarnReturn/DRbody/DRitem/refDoc/attachment/externalReference/uri/@isURL) [Optional] [Default= true] - nota: <i>usage of URLs is recommended</i>
itemID	number of the line/item of the referenced document - base type: string, max length: 6, (XPath TEXDarnReturn/DRheader/refDoc/itemID) 0-1 (XPath TEXDarnReturn/DRbody/DRitem/refDoc/itemID) 0-1
job	element of a work cycle - base type: string, cod. table: T20 <a href="http://www.ebiz.enea.it/moda-ml/repository/codelist/draft/gc_T20.xml">http://www.ebiz.enea.it/moda-ml/repository/codelist/draft/gc_T20.xml</a> (XPath TEXDarnReturn/DRbody/DRitem/darnJobReport/job) 1-1
jobPrice	price of a hired job operation - base type: decimal, min inclusive: 0, fraction digits: 4, (XPath TEXDarnReturn/DRbody/DRitem/darnJobReport/darnJobPrice/jobPrice) 0-1
jobTime	worktime of the elementary operation of a work cycle in hours and minutes ( nnnHnnM) - base type: duration, (XPath TEXDarnReturn/DRbody/DRitem/darnJobReport/jobTime) 0-1
jobTimeBasis	reference basis for the time of an operation (e.g.: 1 metre, 50 metres, 30 kilos, etc...) - base type: positiveInteger, min inclusive: 1, (XPath TEXDarnReturn/DRbody/DRitem/darnJobReport/jobTimeBasis) 0-1 - note: <i>this element must not be used when the time (jobTime) is a forfeit</i>
legalName	legal name of a Party - base type: string, max length: 250, (XPath TEXDarnReturn/DRheader/buyer/legalName) 0-1 (XPath TEXDarnReturn/DRheader/thirdParty/legalName) 0-1 (XPath TEXDarnReturn/DRheader/subContractor/legalName) 0-1
lineN	number of the line item of the present message (xml document); it is set by the role that produces the document. Usually it is a progressive number, but not always. - base type: positiveInteger, min inclusive: 1, max inclusive: 9999, (XPath TEXDarnReturn/DRbody/DRitem/lineN) 1-1
@listName	the name of the list of codes used to make an instance of the element (it might be thought as descriptive element, i.e. 'fabric printing technologies', or not, i.e. "T264") - base type: string, max length: 40, (XPath TEXDarnReturn/DRbody/DRitem/texCode/color/@listName) [Optional] - nota: <i>this attribute should always be used coupled with "numberingOrg"</i> (XPath TEXDarnReturn/DRbody/DRitem/texCode/pattern/@listName) [Optional] - nota: <i>this attribute should always be used coupled with "numberingOrg"</i> (XPath TEXDarnReturn/DRbody/DRitem/refDoc/season/@listName) [Optional] (XPath TEXDarnReturn/DRheader/refDoc/season/@listName) [Optional] (XPath TEXDarnReturn/DRbody/DRitem/texCode/art/@listName) [Optional] - nota: <i>this attribute should always be used coupled with "numberingOrg"</i>

@listVersion	<p>it specifies the version of the list of codes used to make an instance of the element</p> <ul style="list-style-type: none"> <li>- base type: string, max length: 6, (XPath TEXDarnReturn/DRbody/DRitem/texCode/art/@listVersion) [Optional]</li> <li>- nota: <i>this attribute should always be used coupled with "numberingOrg" and "listName"</i> (XPath TEXDarnReturn/DRheader/refDoc/season/@listVersion) [Optional] (XPath TEXDarnReturn/DRbody/DRitem/texCode/color/@listVersion) [Optional]</li> <li>- nota: <i>this attribute should always be used coupled with "numberingOrg" and "listName"</i> (XPath TEXDarnReturn/DRbody/DRitem/texCode/pattern/@listVersion) [Optional]</li> <li>- nota: <i>this attribute should always be used coupled with "numberingOrg" and "listName"</i> (XPath TEXDarnReturn/DRbody/DRitem/refDoc/season/@listVersion) [Optional]</li> </ul>
@ln	<p>Language code.</p> <ul style="list-style-type: none"> <li>- base type: string, (XPath TEXDarnReturn/DRbody/DRitem/texCode/description/@ln) [Optional]</li> </ul>
@logo	<p>company logo (URL of the image jpeg or gif). It is recommended that the width of the image does not exceed 640 pixel.</p> <ul style="list-style-type: none"> <li>- base type: string, max length: 255, (XPath TEXDarnReturn/DRheader/buyer/@logo) [Optional]</li> </ul>
lotN	<p>lot number of a product or batch number of the raw material</p> <ul style="list-style-type: none"> <li>- base type: string, max length: 15, (XPath TEXDarnReturn/DRbody/DRitem/piece/lotN) 0-2</li> <li>- note: <i>The lotN instances must differ by value of the numberingOrg attribute</i> (XPath TEXDarnReturn/DRbody/DRitem/pieceChain/lotN) 0-1</li> </ul>
@mime	<p>the mime type of the binary object</p> <ul style="list-style-type: none"> <li>- base type: normalizedString, (XPath TEXDarnReturn/DRheader/refDoc/attachment/binaryObject/@mime) [Optional] (XPath TEXDarnReturn/DRbody/DRitem/refDoc/attachment/binaryObject/@mime) [Optional]</li> </ul>
mimeCode	<p>mime type of the external object</p> <ul style="list-style-type: none"> <li>- base type: normalizedString, (XPath TEXDarnReturn/DRheader/refDoc/attachment/externalReference/mimeCode) 0-1 (XPath TEXDarnReturn/DRbody/DRitem/refDoc/attachment/externalReference/mimeCode) 0-1</li> </ul>
mixMatch	<p>colour hue used for the match of garments</p> <ul style="list-style-type: none"> <li>- base type: string, max length: 15, (XPath TEXDarnReturn/DRbody/DRitem/piece/mixMatch) 0-1</li> </ul>
msgDate	<p>date of issue of the present message (xml document), according to one of the patterns YYYY-MM-DD, YYYY-MM-DD:HH-MM or YYYY-WW.</p> <ul style="list-style-type: none"> <li>- base type: string, (XPath TEXDarnReturn/DRheader/msgDate) 1-1</li> </ul>
@msgfunction	<p>function performed by the present message with regards to the transmission</p> <ul style="list-style-type: none"> <li>- base type: string, cod. table: NT18 <a href="http://www.ebiz.enea.it/moda-ml/repository/codelist/draft/gc_NT18.xml">http://www.ebiz.enea.it/moda-ml/repository/codelist/draft/gc_NT18.xml</a> (XPath TEXDarnReturn/@msgfunction) [Optional] [Default= OR]</li> </ul>
msgID	<p>key identifier of the business document in the information system of the issuing Party. In case of more despatches of the same business document, it is unchanged.</p> <ul style="list-style-type: none"> <li>- base type: string, max length: 35, (XPath TEXDarnReturn/DRheader/msgID) 0-1</li> </ul>

msgN	<p>identification number given to the message (xml document) by its issuer. In case of more despatches of the same business document, it changes.</p> <p>- base type: string, max length: 35, (XPath TEXDarnReturn/DRheader/msgN) 1-1</p>
note	<p>free text or structured (computer processing) note. For note structuring use the attributes "noteLabel" and "codelist"</p> <p>- base type: string, max length: 350, (XPath TEXDarnReturn/DRheader/note) 0-99 (XPath TEXDarnReturn/DRbody/DRitem/note) 0-99 (XPath TEXDarnReturn/DRbody/DRitem/pieceMap/pieceFault/note) 0-99</p>
@noteLabel	<p>subject qualifier of a note</p> <p>- base type: string, max length: 35, (XPath TEXDarnReturn/DRbody/DRitem/note/@noteLabel) [Optional]</p> <p>- nota: <i>must be used to qualify the subject of the note</i> (XPath TEXDarnReturn/DRbody/DRitem/pieceMap/pieceFault/note/@noteLabel) [Optional]</p> <p>- nota: <i>must be used to qualify the subject of the note</i> (XPath TEXDarnReturn/DRheader/note/@noteLabel) [Optional]</p> <p>- nota: <i>must be used to qualify the subject of the note</i></p>
@numberingOrg	<p>code specifying the organisation who has created or owns the coding or numbering system</p> <p>- base type: string, cod. table: NT6 <a href="http://www.ebiz.enea.it/moda-ml/repository/codelist/draft/gc_NT6.xml">http://www.ebiz.enea.it/moda-ml/repository/codelist/draft/gc_NT6.xml</a> (XPath TEXDarnReturn/DRheader/refDoc/attachment/fileName/@numberingOrg) [Optional]</p> <p>(XPath TEXDarnReturn/DRbody/DRitem/pieceMap/pieceFault/note/@numberingOrg) [Optional]</p> <p>(XPath TEXDarnReturn/DRbody/DRitem/note/@numberingOrg) [Optional]</p> <p>(XPath TEXDarnReturn/DRbody/DRitem/piece/packageN/@numberingOrg) [Optional]</p> <p>(XPath TEXDarnReturn/DRheader/docID/@numberingOrg) [Optional]</p> <p>- nota: <i>here can be specified whose document numbering is used (e.g.: Client, Supplier, ..)</i> (XPath TEXDarnReturn/DRbody/DRitem/piece/mixMatch/@numberingOrg) [Optional]</p> <p>(XPath TEXDarnReturn/DRbody/DRitem/piece/dyeN/@numberingOrg) [Optional]</p> <p>(XPath TEXDarnReturn/DRbody/DRitem/piece/lotN/@numberingOrg) [Optional]</p> <p>(XPath TEXDarnReturn/DRheader/thirdParty/id/@numberingOrg) [Optional]</p> <p>(XPath TEXDarnReturn/DRbody/DRitem/piece/serialN/@numberingOrg) [Optional]</p> <p>- nota: <i>here the issuer of the serial number must be specified (when different from the Supplier)</i> (XPath TEXDarnReturn/DRbody/DRitem/piece/EPC/@numberingOrg) [Optional]</p> <p>(XPath TEXDarnReturn/DRheader/refDoc/docID/@numberingOrg) [Optional]</p> <p>- nota: <i>here can be specified whose document numbering is used (e.g.: Client, Supplier, ..)</i> (XPath TEXDarnReturn/DRheader/refDoc/season/@numberingOrg) [Optional]</p> <p>(XPath TEXDarnReturn/DRbody/DRitem/pieceChain/pieceCut/serialN/@numberingOrg) [Optional]</p> <p>- nota: <i>here the issuer of the serial number must be specified (when different from the Supplier)</i> (XPath TEXDarnReturn/DRbody/DRitem/texCode/@numberingOrg) [Optional]</p> <p>(XPath TEXDarnReturn/DRbody/DRitem/texCode/art/@numberingOrg) [Optional]</p> <p>- nota: <i>this attribute should be used either single or coupled with "listName" and "listVersion"</i> (XPath TEXDarnReturn/DRheader/subContractor/id/@numberingOrg) [Optional]</p> <p>(XPath TEXDarnReturn/DRbody/DRitem/refDoc/season/@numberingOrg) [Optional]</p> <p>(XPath TEXDarnReturn/DRbody/DRitem/refDoc/attachment/fileName/@numberingOrg) [Optional]</p> <p>(XPath TEXDarnReturn/DRbody/DRitem/pieceChain/serialN/@numberingOrg) [Optional]</p> <p>- nota: <i>here the issuer of the serial number must be specified (when different from the Supplier)</i> (XPath TEXDarnReturn/DRbody/DRitem/texCode/color/@numberingOrg) [Optional]</p>



	<p>- nota: <i>this attribute should be used either single or coupled with "listName" and "listVersion"</i>  (XPath TEXDarnReturn/DRbody/DRitem/texCode/added/@numberingOrg) [Optional]</p> <p>(XPath TEXDarnReturn/DRbody/DRitem/texCode/pattern/@numberingOrg) [Optional]</p> <p>- nota: <i>this attribute should be used either single or coupled with "listName" and "listVersion"</i>  (XPath TEXDarnReturn/DRheader/buyer/id/@numberingOrg) [Optional]  (XPath TEXDarnReturn/DRheader/buyer/additionalIdentifier/@numberingOrg) [Optional]</p> <p>- nota: <i>here the issuer of the identifier must be specified</i>  (XPath TEXDarnReturn/DRbody/DRitem/pieceChain/lotN/@numberingOrg) [Optional]  (XPath TEXDarnReturn/DRbody/DRitem/pieceChain/dyeN/@numberingOrg) [Optional]  (XPath TEXDarnReturn/DRbody/DRitem/pieceChain/packageN/@numberingOrg) [Optional]  (XPath TEXDarnReturn/DRbody/DRitem/refDoc/docID/@numberingOrg) [Optional]</p> <p>- nota: <i>here can be specified whose document numbering is used (e.g.: Client, Supplier, ..)</i>  (XPath TEXDarnReturn/DRheader/note/@numberingOrg) [Optional]</p>
@packageContainerN	<p>reference usable to indicate the outer package containing this package</p> <p>- base type: string, max length: 40,  (XPath TEXDarnReturn/DRbody/DRitem/pieceChain/packageN/@packageContainerN) [Optional]  (XPath TEXDarnReturn/DRbody/DRitem/piece/packageN/@packageContainerN) [Optional]</p>
packageN	<p>serial number used to identify a transport package</p> <p>- base type: string, max length: 40,  (XPath TEXDarnReturn/DRbody/DRitem/piece/packageN) 0-1</p> <p>- note: <i>here the transport package containing the piece can be identified</i>  (XPath TEXDarnReturn/DRbody/DRitem/pieceChain/packageN) 0-1</p>
pattern	<p>pattern/design number of the product, when not included in the article code</p> <p>- base type: string, max length: 15,  (XPath TEXDarnReturn/DRbody/DRitem/texCode/pattern) 0-1</p>
person	<p>name of the contact person within a Party</p> <p>- base type: string, max length: 40,  (XPath TEXDarnReturn/DRheader/thirdParty/person) 0-1  (XPath TEXDarnReturn/DRheader/buyer/person) 0-1  (XPath TEXDarnReturn/DRheader/subContractor/person) 0-1</p>
@phone	<p>phone number of the contact person within a Party</p> <p>- base type: string, max length: 35,  (XPath TEXDarnReturn/DRheader/thirdParty/person/@phone) [Optional]  (XPath TEXDarnReturn/DRheader/buyer/person/@phone) [Optional]  (XPath TEXDarnReturn/DRheader/subContractor/person/@phone) [Optional]</p>
pieceAllow	<p>allowance required or accorded for the piece</p> <p>- base type: decimal, fraction digits: 2,  (XPath TEXDarnReturn/DRbody/DRitem/pieceMap/pieceFault/pieceAllow) 0-1</p> <p>- note: <i>this is the allowance estimated for the fault by the same "source" responsible for the other measurements</i>  (XPath TEXDarnReturn/DRbody/DRitem/piece/pieceAllow) 0-1</p>
pieceCutWidth	<p>effective usable width of the fabric piece (for garment manufacturing)</p> <p>- base type: decimal, min inclusive: 0, fraction digits: 2,  (XPath TEXDarnReturn/DRbody/DRitem/piece/pieceCutWidth) 0-1</p>
pieceInnWrap1	<p>code specifying the type of inner wrapping/packing used for the fabric piece</p> <p>- base type: string, cod. table: T4  <a href="http://www.ebiz.enea.it/moda-ml/repository/codelist/draft/gc_T4.xml">http://www.ebiz.enea.it/moda-ml/repository/codelist/draft/gc_T4.xml</a>  (XPath TEXDarnReturn/DRbody/DRitem/piece/piecePack/pieceInnWrap1) 1-1</p>

	(XPath TEXDarnReturn/DRbody/DRitem/pieceChain/piecePack/pieceInnWrap1) 1-1
pieceInnWrap2	code sub-specifying the type of inner wrapping/packing used for the fabric piece - base type: string, cod. table: T5 <a href="http://www.ebiz.enea.it/moda-ml/repository/codelist/draft/gc_T5.xml">http://www.ebiz.enea.it/moda-ml/repository/codelist/draft/gc_T5.xml</a> (XPath TEXDarnReturn/DRbody/DRitem/pieceChain/piecePack/pieceInnWrap2) 0-1 (XPath TEXDarnReturn/DRbody/DRitem/piece/piecePack/pieceInnWrap2) 0-1
pieceLength	length of the piece - base type: decimal, min inclusive: 0, fraction digits: 2, (XPath TEXDarnReturn/DRbody/DRitem/pieceChain/pieceLength) 0-1 (XPath TEXDarnReturn/DRbody/DRitem/piece/pieceLength) 0-1 (XPath TEXDarnReturn/DRbody/DRitem/pieceChain/pieceCut/pieceLength) 0-1
pieceOutWrap	code specifying the type of outer wrapping or packing used for the fabric piece - base type: string, cod. table: T6 <a href="http://www.ebiz.enea.it/moda-ml/repository/codelist/draft/gc_T6.xml">http://www.ebiz.enea.it/moda-ml/repository/codelist/draft/gc_T6.xml</a> (XPath TEXDarnReturn/DRbody/DRitem/pieceChain/piecePack/pieceOutWrap) 0-1 (XPath TEXDarnReturn/DRbody/DRitem/piece/piecePack/pieceOutWrap) 0-1
piecePackText	free text specifying the type of wrapping or packing used for the fabric piece - base type: string, max length: 250, (XPath TEXDarnReturn/DRbody/DRitem/pieceChain/piecePack/piecePackText) 1-1 (XPath TEXDarnReturn/DRbody/DRitem/piece/piecePack/piecePackText) 1-1
pieceStatus	code used to describe the status of a fabric piece after the control - base type: string, cod. table: T52 <a href="http://www.ebiz.enea.it/moda-ml/repository/codelist/draft/gc_T52.xml">http://www.ebiz.enea.it/moda-ml/repository/codelist/draft/gc_T52.xml</a> (XPath TEXDarnReturn/DRbody/DRitem/piece/pieceStatus) 0-1
pieceWeight	effective total weight of the fabric piece - base type: decimal, min inclusive: 0, fraction digits: 2, (XPath TEXDarnReturn/DRbody/DRitem/pieceChain/pieceWeight) 0-1 (XPath TEXDarnReturn/DRbody/DRitem/piece/pieceWeight) 0-1 - note: <i>It is the net weight of the piece.</i> (XPath TEXDarnReturn/DRbody/DRitem/pieceChain/pieceCut/pieceWeight) 0-1
pieceWeightM	effective weight per metre of the fabric piece - base type: decimal, min inclusive: 0, fraction digits: 2, (XPath TEXDarnReturn/DRbody/DRitem/piece/pieceWeightM) 0-1
pieceWidth	effective width of the fabric piece - base type: decimal, min inclusive: 0, fraction digits: 2, (XPath TEXDarnReturn/DRbody/DRitem/pieceChain/pieceWidth) 0-1 (XPath TEXDarnReturn/DRbody/DRitem/piece/pieceWidth) 0-1
postCode	code defining the postal zone - base type: string, max length: 10, (XPath TEXDarnReturn/DRheader/subContractor/postCode) 0-1 (XPath TEXDarnReturn/DRheader/thirdParty/postCode) 0-1 (XPath TEXDarnReturn/DRheader/buyer/postCode) 0-1
priceBasis	reference basis for the price (e.g.: 1 metre, 1 hour, 1 minute, etc...) - base type: positiveInteger, min inclusive: 1, (XPath TEXDarnReturn/DRbody/DRitem/darnJobReport/darnJobPrice/priceBasis) 0-1 - note: <i>this element must not be used when the price (jobPrice) is a forfeit</i>
qty	net quantity of the article or object correlated, qualified by the function of the document (ordering, delivering, ..) and by the context - base type: decimal, min inclusive: 0, fraction digits: 2, (XPath TEXDarnReturn/DRbody/DRitem/qty) 1-2
<hr/> <b>AAAA-WARNING! - text not AVAILABLE n. 245 - In=en</b>	

@role	Third Party role qualifier - base type: string, cod. table: NT2 <a href="http://www.ebiz.enea.it/moda-ml/repository/codelist/draft/gc_NT2.xml">http://www.ebiz.enea.it/moda-ml/repository/codelist/draft/gc_NT2.xml</a> (XPath TEXDarnReturn/DRheader/thirdParty/@role) [Required]
season	sale season; defined as: season (1 crt) + year (4 crt) - season: S/S=1 A/W=2 Spring=3 Summer=4 Autumn=5 Winter=6: for more than four seasons use alphabetic sequence: 1st season=A 2nd season=B etc.etc. - base type: string, max length: 15, (XPath TEXDarnReturn/DRbody/DRitem/refDoc/season) 0-1 - note: here indicates the season to which the referenced document belongs (XPath TEXDarnReturn/DRheader/refDoc/season) 0-1 - note: here indicates the season to which the referenced document belongs
@sender	qualifier that specifies the Party issuing of the document - base type: boolean, (XPath TEXDarnReturn/DRheader/thirdParty/@sender) [Optional] - nota: This attribute is mandatory when the STYLESHEET must be used (XPath TEXDarnReturn/DRheader/subContractor/@sender) [Optional] - nota: This attribute is mandatory when the STYLESHEET must be used (XPath TEXDarnReturn/DRheader/buyer/@sender) [Optional] - nota: This attribute is mandatory when the STYLESHEET must be used
serialN	serial number used for the identification of a physical unit - base type: string, max length: 250, (XPath TEXDarnReturn/DRbody/DRitem/piece/serialN) 0-9 <hr/> <b>AAAA-WARNING! - text not AVAILABLE n. 245 - In=en</b> - note: multiple values of serialN are allowed for different representations of the serial identifier of the same piece. Instances of serialN must differ at least for one value of numberingOrg and idQualifier. (XPath TEXDarnReturn/DRbody/DRitem/pieceChain/pieceCut/serialN) 1-9 - note: multiple values of serialN are allowed in order to provide different representations of the serial identifier of the same piece. Different instances of serialN must differ at least for one value of idQualifier or numberingOrg (XPath TEXDarnReturn/DRbody/DRitem/pieceChain/serialN) 1-9 - note: multiple values of serialN are allowed in order to provide different representations of the serial identifier of the same piece chain. Different instances of serialN must differ at least for one value of idQualifier or numberingOrg
@source	party who has provided the data - base type: string, cod. table: NT12 <a href="http://www.ebiz.enea.it/moda-ml/repository/codelist/draft/gc_NT12.xml">http://www.ebiz.enea.it/moda-ml/repository/codelist/draft/gc_NT12.xml</a> (XPath TEXDarnReturn/DRbody/DRitem/pieceMap/@source) [Required]
street	street and building number identifying a location - base type: string, max length: 80, (XPath TEXDarnReturn/DRheader/buyer/street) 0-1 (XPath TEXDarnReturn/DRheader/thirdParty/street) 0-1 (XPath TEXDarnReturn/DRheader/subContractor/street) 0-1
subCountry	short name or code of the sub-country entity - base type: string, max length: 9, (XPath TEXDarnReturn/DRheader/buyer/subCountry) 0-1 (XPath TEXDarnReturn/DRheader/subContractor/subCountry) 0-1 (XPath TEXDarnReturn/DRheader/thirdParty/subCountry) 0-1
subDept	name or code of a contact department within a Party - base type: string, max length: 40, (XPath TEXDarnReturn/DRheader/thirdParty/subDept) 0-1 (XPath TEXDarnReturn/DRheader/subContractor/subDept) 0-1 (XPath TEXDarnReturn/DRheader/buyer/subDept) 0-1
@TID	serial number wired into the RFID chip - base type: string, (XPath TEXDarnReturn/DRbody/DRitem/piece/EPC/@TID) [Optional]
totFault	total number of faults: the 1st/2nd digit count the "Large faults", the 3rd/4th the "Medium faults" and the 5th/6th the "Small faults" - base type: positiveInteger,

	(XPath TEXDarnReturn/DRbody/DRitem/pieceMap/totFault) 1-1 (XPath TEXDarnReturn/DRbody/DRitem/piece/totFault) 0-1
totQty	total quantity of the articles related to the whole document - base type: decimal, min inclusive: 0, fraction digits: 2, (XPath TEXDarnReturn/MOtotals/totQty) 2-2 - note: <i>used to specify the number of pieces (um="PZ") and the quantity of metres (um="MTR") relative to the document</i>
@transReason	reason for the transport - base type: string, cod. table: NT11 <a href="http://www.ebiz.enea.it/moda-ml/repository/codelist/draft/gc_NT11.xml">http://www.ebiz.enea.it/moda-ml/repository/codelist/draft/gc_NT11.xml</a> (XPath TEXDarnReturn/DRbody/DRitem/@transReason) [Optional]
@uid	unique element identifier within the xml document - base type: string, (XPath TEXDarnReturn/DRbody/DRitem/refDoc/attachment/@uid) [Optional] (XPath TEXDarnReturn/DRheader/refDoc/attachment/@uid) [Optional]
@um	specification of the unit of measure - base type: string, cod. table: NT7 <a href="http://www.ebiz.enea.it/moda-ml/repository/codelist/draft/gc_NT7.xml">http://www.ebiz.enea.it/moda-ml/repository/codelist/draft/gc_NT7.xml</a> (XPath TEXDarnReturn/DRbody/DRitem/pieceMap/pieceFault/pieceAllow/@um) [Required] (XPath TEXDarnReturn/MOtotals/totQty/@um) [Required] (XPath TEXDarnReturn/DRbody/DRitem/piece/pieceWeight/@um) [Optional] [Default= KGM] (XPath TEXDarnReturn/DRbody/DRitem/pieceChain/pieceCut/pieceWeight/@um) [Optional] [Default= KGM] (XPath TEXDarnReturn/DRbody/DRitem/pieceChain/pieceWidth/@um) [Optional] [Default= CMT] (XPath TEXDarnReturn/DRbody/DRitem/pieceMap/pieceFault/weftStart/@um) [Optional] [Default= CMT] (XPath TEXDarnReturn/DRbody/DRitem/darnJobReport/jobTimeBasis/@um) [Required] (XPath TEXDarnReturn/DRbody/DRitem/pieceMap/pieceFault/weftEnd/@um) [Optional] [Default= CMT] (XPath TEXDarnReturn/DRbody/DRitem/piece/pieceWeightM/@um) [Optional] [Default= GRM] (XPath TEXDarnReturn/DRbody/DRitem/pieceChain/pieceWeight/@um) [Optional] [Default= KGM] (XPath TEXDarnReturn/DRbody/DRitem/darnJobReport/darnJobPrice/priceBasis/@um) [Required] (XPath TEXDarnReturn/DRbody/DRitem/piece/pieceWidth/@um) [Optional] [Default= CMT] (XPath TEXDarnReturn/DRbody/DRitem/qty/@um) [Required] (XPath TEXDarnReturn/DRbody/DRitem/pieceChain/pieceLength/@um) [Optional] [Default= MTR] (XPath TEXDarnReturn/DRbody/DRitem/pieceMap/pieceFault/warpStart/@um) [Optional] [Default= MTR] (XPath TEXDarnReturn/DRbody/DRitem/pieceMap/pieceFault/warpEnd/@um) [Optional] [Default= MTR] (XPath TEXDarnReturn/DRbody/DRitem/piece/grossWeight/@um) [Required] (XPath TEXDarnReturn/DRbody/DRitem/piece/pieceCutWidth/@um) [Optional] [Default= CMT] (XPath TEXDarnReturn/DRbody/DRitem/piece/pieceAllow/@um) [Required] (XPath TEXDarnReturn/DRbody/DRitem/pieceChain/pieceCut/pieceLength/@um) [Optional] [Default= MTR] (XPath TEXDarnReturn/DRbody/DRitem/piece/pieceLength/@um) [Optional] [Default= MTR]
uri	Uniform Resource Identifier (URI) that identifies the external object as an Internet resource - base type: normalizedString, (XPath TEXDarnReturn/DRbody/DRitem/refDoc/attachment/externalReference/uri) 1-1 (XPath TEXDarnReturn/DRheader/refDoc/attachment/externalReference/uri) 1-1

@useProfile	<p>use profile to which the present document is compliant if it was agreed by the parties. It is suggested a URI with reference to the firm or the URL of the profile.</p> <p>- base type: string, (XPath TEXDarnReturn/@useProfile) [Optional]</p>
@VAT	<p>VAT rate or code (DEPRECATED, use dtScheme element)</p> <p>- base type: string, cod. table: NT16 <a href="http://www.ebiz.enea.it/moda-ml/repository/codelist/draft/gc_NT16.xml">http://www.ebiz.enea.it/moda-ml/repository/codelist/draft/gc_NT16.xml</a> (XPath TEXDarnReturn/DRbody/DRitem/lineN/@VAT) [Optional]</p> <p>- nota: <i>Deprecated, prefer dtScheme when available.</i> (XPath TEXDarnReturn/DRheader/thirdParty/@VAT) [Optional]</p>
@version	<p>Dictionary version from which the instance has been created</p> <p>- base type: string, cod. table: NT100 <a href="http://www.ebiz.enea.it/moda-ml/repository/codelist/draft/gc_NT100.xml">http://www.ebiz.enea.it/moda-ml/repository/codelist/draft/gc_NT100.xml</a> (XPath TEXDarnReturn/@version) [Optional] [Default= draft]</p>
warpEnd	<p>end point of the fabric fault in the warp direction</p> <p>- base type: decimal, min inclusive: 0, fraction digits: 2, (XPath TEXDarnReturn/DRbody/DRitem/pieceMap/pieceFault/warpEnd) 0-1</p>
warpStart	<p>start point of the fabric fault in the warp direction</p> <p>- base type: decimal, min inclusive: 0, fraction digits: 2, (XPath TEXDarnReturn/DRbody/DRitem/pieceMap/pieceFault/warpStart) 1-1</p>
weftEnd	<p>end point of the fabric fault in the weft direction</p> <p>- base type: decimal, min inclusive: 0, fraction digits: 2, (XPath TEXDarnReturn/DRbody/DRitem/pieceMap/pieceFault/weftEnd) 0-1</p>
weftStart	<p>start point of the fabric fault in the weft direction</p> <p>- base type: decimal, min inclusive: 0, fraction digits: 2, (XPath TEXDarnReturn/DRbody/DRitem/pieceMap/pieceFault/weftStart) 0-1</p>

## 2.3 Suggested best practices

**TEXDarnReturn/DRbody/DRitem/qty** (net quantity of the article or object correlated, qualified by the function of the document (ordering, delivering, ..) and by the context)

this element can have two instances only if the units of measure are different

**TEXDarnReturn/DRbody/DRitem/piece/serialN** (serial number used for the identification of a physical unit)

This element might contain also codes for RFID devices.

## 2.4 Enumeration tables

List of enumeration tables used in the XML document. You can find the corresponding codes at:  
<http://www.ebiz-tcf.eu/moda-ml/imple/moda-ml-draft.asp?lingua=en&pag=6>

NT100 - eBIZ TCFUpstream version  
NT11 - transport causal  
NT12 - data source  
NT13 - fabric fault category  
NT14 - fabric fault shape  
NT16 - VAT rate or code  
NT18 - message function  
NT2 - third party qualifier  
NT29 - format of a date  
NT4 - end use  
NT6 - coding system owner/issuer  
NT7 - unit of measure  
T10 - ISO3166 - Country  
T12 - fabric faults  
T20 - type of darning operation  
T21 - type of document  
T4 - fabric piece inner packing (wrapping) 1  
T44 - additional code type  
T5 - fabric piece inner packing (wrapping) 2  
T52 - fabric piece status  
T6 - fabric piece outer packing  
T9 - ISO4217 - Currency

## ACKNOWLEDGEMENT



This action is part of the eBIZ-4.0 project, which has received funding from the European Union's COSME Programme (2014 - 2020).

## DISCLAIMER

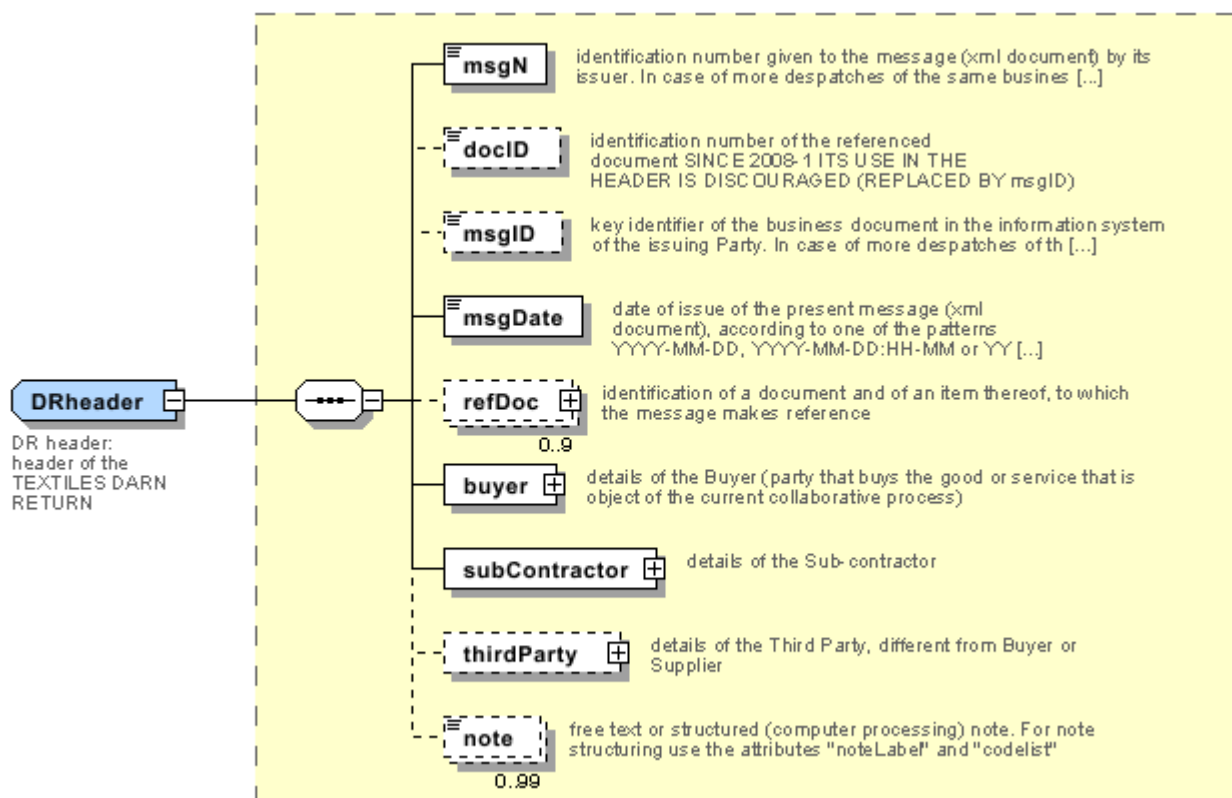
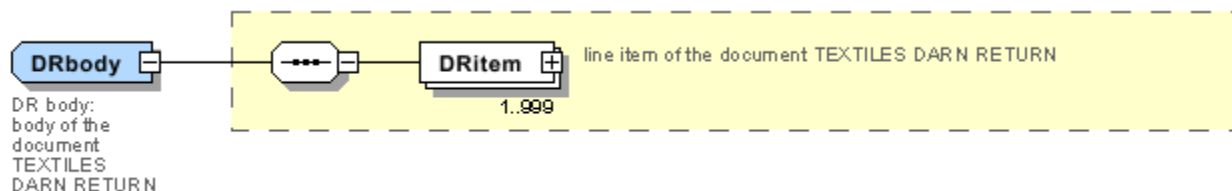
The content of this document represents the views of the authors only and is their sole responsibility; it cannot be considered to reflect the views of the European Commission and/or the Executive Agency for Small and Medium-sized Enterprises (EASME) or any other body of the European Union.

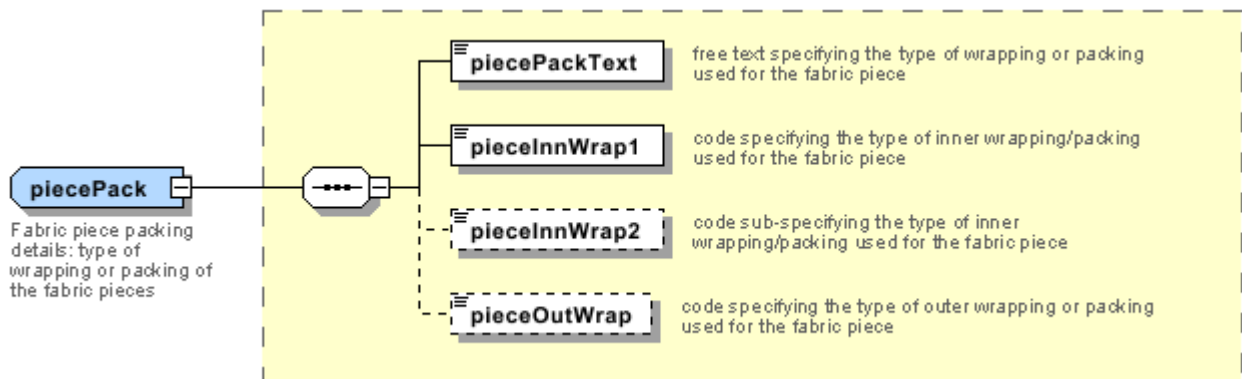
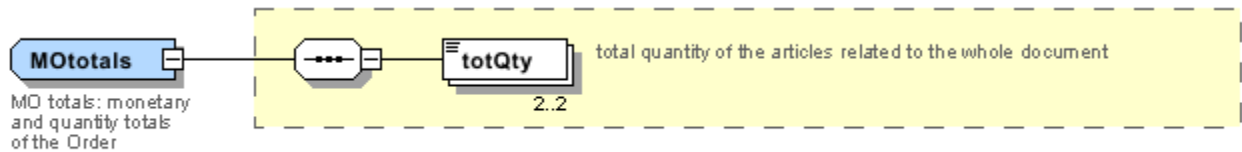
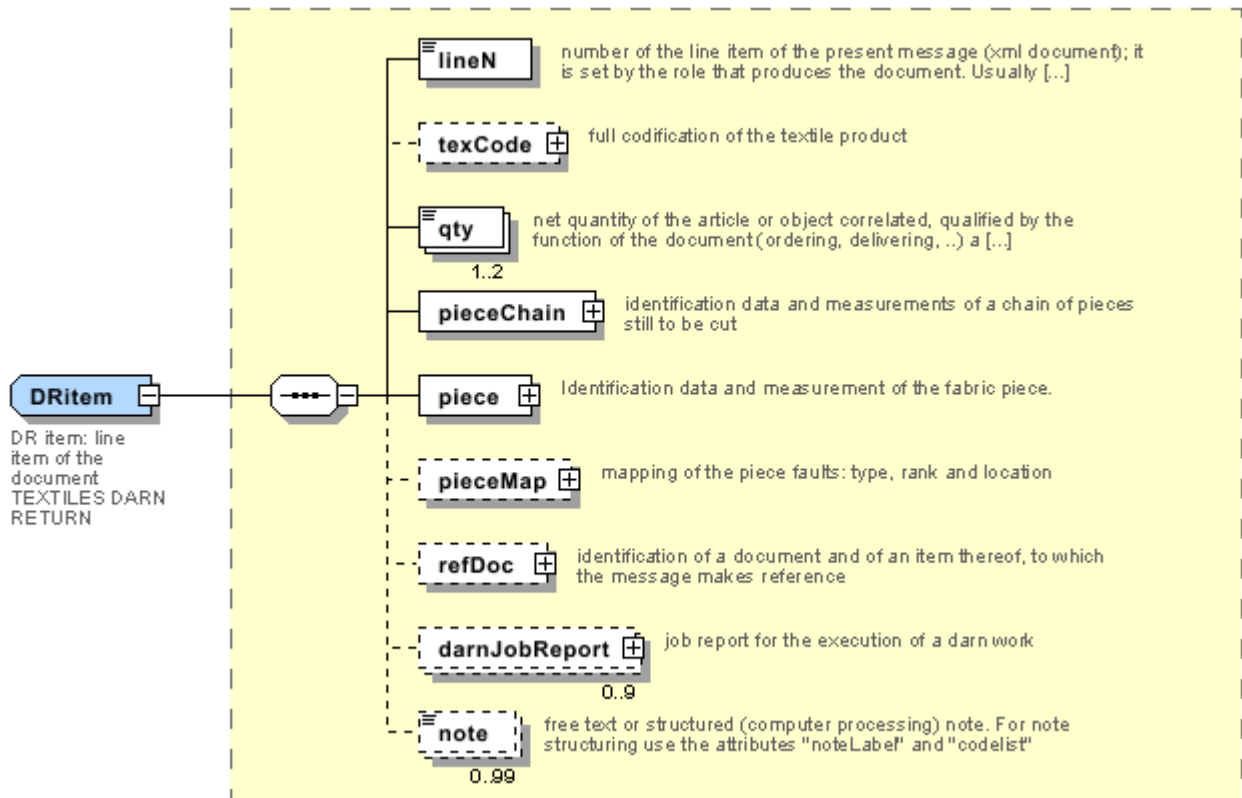
The European Commission and the Agency do not accept any responsibility for use that may be made of the information it contains.

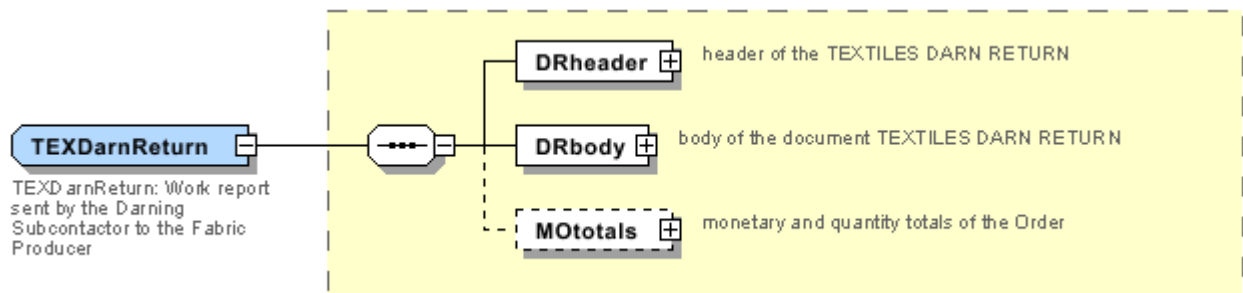
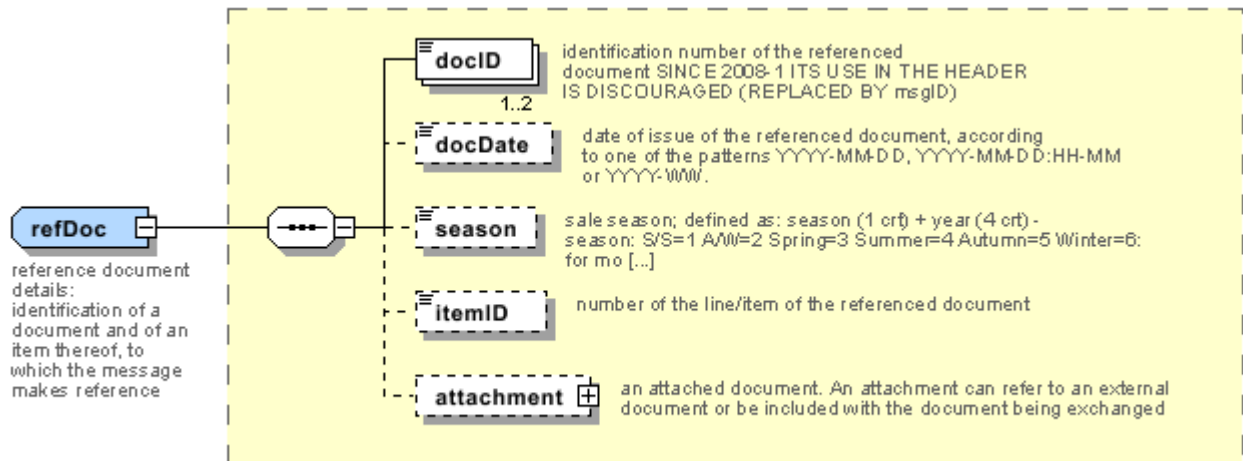


# Annex A

Representative images of the principal complex elements' structure.









## Annex B

### NT100 - eBIZ TCFUpstream version

dictionary version

Agency name: eBIZ

tabella cod.: NT100

File codes list (Generic code): [http://www.ebiz.enea.it/moda-ml/repository/codelist/draft/gc\\_NT100.xml](http://www.ebiz.enea.it/moda-ml/repository/codelist/draft/gc_NT100.xml)

Code	Description	Adoption note	Date of insertion
2013-1	v2013-1		01/07/2013
2018-1	v2018-1		04/11/2018
draft	draft		08/09/2017

### NT11 - transport causal

reason for the transport

Agency name: eBIZ

tabella cod.: NT11

File codes list (Generic code): [http://www.ebiz.enea.it/moda-ml/repository/codelist/draft/gc\\_NT11.xml](http://www.ebiz.enea.it/moda-ml/repository/codelist/draft/gc_NT11.xml)

Code	Description	Adoption note	Date of insertion
FOC	free of charge		
FRW	return from re-works		
FST	return from storage		
FWW	return from view		
FWK	return from works		
IST	in storage		
NWK	return non-worked		
RJC	return from rejection		
SEL	to sell		
STO	to storage		
VEW	to view		
WRK	to works		

### NT12 - data source

party who has provided the data

Agency name: eBIZ

tabella cod.: NT12

File codes list (Generic code): [http://www.ebiz.enea.it/moda-ml/repository/codelist/draft/gc\\_NT12.xml](http://www.ebiz.enea.it/moda-ml/repository/codelist/draft/gc_NT12.xml)

Code	Description	Adoption note	Date of insertion
AC	internal test		
CO	external test		
CV	test after steaming		

### NT13 - fabric fault category

ranking class of the fabric fault

Agency name: eBIZ

tabella cod.: NT13

File codes list (Generic code): [http://www.ebiz.enea.it/moda-ml/repository/codelist/draft/gc\\_NT13.xml](http://www.ebiz.enea.it/moda-ml/repository/codelist/draft/gc_NT13.xml)

Code	Description	Adoption note	Date of insertion
CL1	class 1		
CL2	class 2		
CL3	class 3		
CL4	class 4		
CL5	class 5		
CL6	class 6		
G	large		
L	small		
M	medium		

### NT14 - fabric fault shape

shape classification of the fabric fault

Agency name: eBIZ

tabella cod.: NT14

File codes list (Generic code): [http://www.ebiz.enea.it/moda-ml/repository/codelist/draft/gc\\_NT14.xml](http://www.ebiz.enea.it/moda-ml/repository/codelist/draft/gc_NT14.xml)

Code	Description	Adoption note	Date of insertion
C	continuous		
P	point		
S	stretch		

### NT16 - VAT rate or code

VAT rate or code ( DEPRECATED, use dtScheme element )

tabella cod.: NT16

File codes list (Generic code): [http://www.ebiz.enea.it/moda-ml/repository/codelist/draft/gc\\_NT16.xml](http://www.ebiz.enea.it/moda-ml/repository/codelist/draft/gc_NT16.xml)

### NT18 - message function

function performed by the present message with regards to the transmission

Agency name: eBIZ

tabella cod.: NT18

File codes list (Generic code): [http://www.ebiz.enea.it/moda-ml/repository/codelist/draft/gc\\_NT18.xml](http://www.ebiz.enea.it/moda-ml/repository/codelist/draft/gc_NT18.xml)

Code	Description	Adoption note	Date of insertion
CA	delete this document		01/07/2013
CP	copy		
OR	original		
RC	re-transmission for data correction		
RT	re-transmission		

### NT2 - third party qualifier

Third Party role qualifier

Agency name: eBIZ

tabella cod.: NT2

File codes list (Generic code): [http://www.ebiz.enea.it/moda-ml/repository/codelist/draft/gc\\_NT2.xml](http://www.ebiz.enea.it/moda-ml/repository/codelist/draft/gc_NT2.xml)

Code	Description	Adoption note	Date of insertion
AG	Sales Agent		
CO	Quality Controller		
DC	Response to		

DF	Invoicee		
DI	Copy to (CC)		28/10/2014
DM	Consignee		
DP	Consignment address (Delivery Party)		
IM	Importer		
OR	Originator		10/09/2014
SP	Forwarder		
TX	Tax Representative		

#### NT29 - format of a date

format used for the date

Agency name: eBIZ

tabella cod.: NT29

File codes list (Generic code): [http://www.ebiz.enea.it/moda-ml/repository/codelist/draft/gc\\_NT29.xml](http://www.ebiz.enea.it/moda-ml/repository/codelist/draft/gc_NT29.xml)

Code	Description	Adoption note	Date of insertion
D	YYYY-MM-DD		
M	YYYY-MM-DD:HH-MM		
W	YYYY-WW		

#### NT4 - end use

specifies the final use of the product

Agency name: eBIZ

tabella cod.: NT4

File codes list (Generic code): [http://www.ebiz.enea.it/moda-ml/repository/codelist/draft/gc\\_NT4.xml](http://www.ebiz.enea.it/moda-ml/repository/codelist/draft/gc_NT4.xml)

Code	Description	Adoption note	Date of insertion
PC	test piece		
PR	production		
SA	Sample		10/09/2014
SC	samples card		
TI	patch		
TP	(test cut)		



## NT6 - coding system owner/issuer

code specifying the organisation who has created or owns the coding or numbering system

Agency name: eBIZ

tabella cod.: NT6

File codes list (Generic code): [http://www.ebiz.enea.it/moda-ml/repository/codelist/draft/gc\\_NT6.xml](http://www.ebiz.enea.it/moda-ml/repository/codelist/draft/gc_NT6.xml)

Code	Description	Adoption note	Date of insertion
CL	Customer/buyer		
CO	Quality Controller		
EN	GS1 ( ex-EAN International )		
ES	e-Stockflow		
FO	Supplier		
GS	GS1		01/07/2013
MF	VAT identifier		
ML	Moda-ML		
SP	Service Provider		

## NT7 - unit of measure

specification of the unit of measure, it is a sub set of table Unit of Measure Code - UN/ECE REC 20 delivered by United Nations Economic Commission for Europe (UN/ECE)

Agency name: eBIZ / UN/ECE

tabella cod.: NT7

File codes list (Generic code): [http://www.ebiz.enea.it/moda-ml/repository/codelist/draft/gc\\_NT7.xml](http://www.ebiz.enea.it/moda-ml/repository/codelist/draft/gc_NT7.xml)

Other link: <http://docs.oasis-open.org/ubl/os-UBL-2.1/cl/gc/default/UnitOfMeasureCode-2.1.gc#>

Code	Description	Adoption note	Date of insertion
CMK	square centimetre		20/12/2017
CMQ	cubic centimetre		20/12/2017
CMT	centimetre		
CNE	centiNewton		
CO2TON	ton of CO2		10/09/2014
COUPLES	couples		
DMQ	cubic decimetre		
E37	pixel		11/04/2018

GRM	gram		
HUR	hour		
INH	inch		
KGM	kilogram		
KMT	kilometer		
KWH	kilowatthours		10/09/2014
LBR	pound		
MIN	minute		
MMK	centimetre		20/12/2017
MMK	square millimetre		20/12/2017
MTK	square metre		20/12/2017
MTQ	cubic metre		
MTR	metre		
NMB	numero		
ONZ	ounce		
P1	percent		
PPM	parts per milion		
PZ	piece		
RPM	rounds per metre		
YRD	yard		

### T10 - ISO3166 - Country

code of the nation

Agency name: ISO

tabella cod.: T10

File codes list (Generic code): [http://www.ebiz.enea.it/moda-ml/repository/codelist/draft/gc\\_T10.xml](http://www.ebiz.enea.it/moda-ml/repository/codelist/draft/gc_T10.xml)

Table not printed: there are 239 elements, more than the maximum specified for printing: 99.

### T12 - fabric faults

code specifying the type or class of fabric fault

Agency name: eBIZ

tabella cod.: T12

File codes list (Generic code): [http://www.ebiz.enea.it/moda-ml/repository/codelist/draft/gc\\_T12.xml](http://www.ebiz.enea.it/moda-ml/repository/codelist/draft/gc_T12.xml)

<b>Code</b>	<b>Description</b>	<b>Adoption note</b>	<b>Date of insertion</b>
AA			
AA1	warpway thick end		
AA2	weftway thick pick		
AA3	thin end/pick		
AA4	warpway thin end		
AA5	weftway thin pick		
AA6	tight end/pick		
AA7	warpway tight end		
AB	weftway tight pick		
AB1	slack end/pick		
AB2	warpway slack end		
AB3	weftway slack pick		
AB4	missing end/pick		
AB5	warpway missing end		
AB6	weftway missing pick		
AC	knots/slubs		
AE	stripes/bars		
AE1	stripes/bars in the warp		
AE2	stripes/bars in the weft		
AG	bowing		
AG1	bowing in the warp		
AG2	bowing in the weft		
AI	skew		
AJ	difference in tension: body-selvedge		
AK			
AL			
AM	tears,cuts,holes		
AN	abrasions		
AO	faulty mending		
AP	creases		
AQ	disagreeable odour		
AR1	foreign matter (fibres)		
AR3	stains		
AS	variation in shade: weftway		

AT	variation in shade: warpway		
AU	difference in shade (vs. sample)		
AV	difference in look (vs. sample)		
AW	difference in handle (vs. sample)		
AX	asymmetry of design		
AY	irregularity of checks		
AZ			
AZA			

### T20 - type of darning operation

element of a work cycle

Agency name: eBIZ

tabella cod.: T20

File codes list (Generic code): [http://www.ebiz.enea.it/moda-ml/repository/codelist/draft/gc\\_T20.xml](http://www.ebiz.enea.it/moda-ml/repository/codelist/draft/gc_T20.xml)

Code	Description	Adoption note	Date of insertion
301	clamp		
302	fine darn		
303	gross darn		

### T21 - type of document

type or class to which the referenced document belongs

Agency name: eBIZ

tabella cod.: T21

File codes list (Generic code): [http://www.ebiz.enea.it/moda-ml/repository/codelist/draft/gc\\_T21.xml](http://www.ebiz.enea.it/moda-ml/repository/codelist/draft/gc_T21.xml)

Code	Description	Adoption note	Date of insertion
BOR	blanket order		01/02/2018
CAT	Price catalogue - tech sheet		
CEO	Certificate of origin		13/04/2018
CER	Certificate		13/04/2018
COC	colour card		
CRN	Credit note		08/09/2017
CTO	Checking order		01/07/2013

CTR	Contract		
CXF	CxF3 file		01/07/2013
DAD	Darn order		
DDT	ddt		
DEA	Despatch advise		
DER	Despatch request		
DR	Document Request		02/12/2014
FOR	Forecast		02/12/2014
GSO	Garment stock offer		
GSX	Garment stock offer change		
INV	Invoice		
KCC	Knitting-Clothing Commission Order		02/12/2014
KCI	Garment in Work Inventory Report		02/12/2014
M2M	Made to Measure Production Order		02/12/2014
MAS	Master marker		
MCI	Visual merchandising instruction		13/04/2018
OCH	Order change		
OFF	Offer		
ORD	Purchase order		
ORP	Order response		
OSR	order status request		
OSS	Offer status		02/12/2014
OST	Order status		
OUR	our reference		
QR	Quality Report		02/12/2014
RAI	Raw Material in Work Inventory Report		02/12/2014
RDC	Raw dyeing commission order		
RDH	Raw dyeing order change		
RDR	Raw dyeing order response		
REA	Receiving advise		
REQ	Request for Offer		
RET	Return		02/12/2014
RSC	Spinning commission order		
RSH	Spinning order change		
RSR	Spinning order response		

SCL	process sheet		
TFC	Textile dyeing-finishing commission order		
TFX	Textile Dyeing-Finishing Order Change		02/12/2014
TPC	Textile printing commission order		
TPX	Textile Printing Order Change		02/12/2014
TWI	Textile in work inventory		
VMI	visual merchandising instructions		01/02/2018
WAC	Warping commission order		
WEC	Weaving commission order		
YDC	Yarn dyeing commission order		
YDH	Yarn dyeing order change		
YDR	Yarn dyeing order response		
YTC	Twisting commission order		
YWI	Yarn in work inventory		

#### T4 - fabric piece inner packing (wrapping) 1

code specifying the type of inner wrapping/packing used for the fabric piece

Agency name: eBIZ

tabella cod.: T4

File codes list (Generic code): [http://www.ebiz.enea.it/moda-ml/repository/codelist/draft/gc\\_T4.xml](http://www.ebiz.enea.it/moda-ml/repository/codelist/draft/gc_T4.xml)

Code	Description	Adoption note	Date of insertion
A	Folded, whole width		
B	Folded, doubled		
C	Folded, tube products		
D	Spoiled, whole width		
E	Spoiled, doubled, pli: left		
F	Spoiled, doubled, pli: right		
G	Rolled, whole width, single item		
H	Rolled, whole width, several items		
I	Rolled, doubled		
J	Rolled, tube products		

#### T44 - additional code type

qualifier of the additional coding of a product

Agency name: eBIZ

tabella cod.: T44

File codes list (Generic code): [http://www.ebiz.enea.it/moda-ml/repository/codelist/draft/gc\\_T44.xml](http://www.ebiz.enea.it/moda-ml/repository/codelist/draft/gc_T44.xml)

Code	Description	Adoption note	Date of insertion
CC	colour card		
CL	sales collection		
CO	company identification code		08/09/2017
DY	dye number		
LT	lot number		
MDI	Made in		08/09/2017
MS	manufacturing state		
PKG	packaging		09/09/2014
PL	product line		
RGB	RGB value		
SE	selvedge code		

## T5 - fabric piece inner packing (wrapping) 2

code specifying the sub-type of inner wrapping/packing used for the fabric piece

Agency name: eBIZ

tabella cod.: T5

File codes list (Generic code): [http://www.ebiz.enea.it/moda-ml/repository/codelist/draft/gc\\_T5.xml](http://www.ebiz.enea.it/moda-ml/repository/codelist/draft/gc_T5.xml)

Code	Description	Adoption note	Date of insertion
A	Open		
B	Folded once, not looped		
C	Folded twice, not looped		
H	Folded once, looped		
I	Folded twice, looped		
J	Without inner object, right side inside		
K	On carton or spooling plank, right side inside		
L	On spool (for pressure sensitive products), right side inside		
M	Without inner object, left side inside		

N	On carton or spooling plank, left side inside		
O	On spool (for pressure sensitive products), left side inside		
P	Without inner object, right side inside (deprecated code)		
Q	On carton, right side inside		
R	On wooden stick, right side inside		
S	Without inner object, left side inside (deprecated code)		
T	On carton, left side inside		
U	On wooden stick, left side inside		

### T52 - fabric piece status

code used to describe the status of a fabric piece with reference to the control

Agency name: eBIZ

tabella cod.: T52

File codes list (Generic code): [http://www.ebiz.enea.it/moda-ml/repository/codelist/draft/gc\\_T52.xml](http://www.ebiz.enea.it/moda-ml/repository/codelist/draft/gc_T52.xml)

Code	Description	Adoption note	Date of insertion
0	first registration		
C	registration from return		
F	stopped		
H	handling		
R	returned		
S	held		
T	deliverable		

### T6 - fabric piece outer packing

code specifying the type of outer wrapping or packing used for the fabric piece

Agency name: eBIZ

tabella cod.: T6

File codes list (Generic code): [http://www.ebiz.enea.it/moda-ml/repository/codelist/draft/gc\\_T6.xml](http://www.ebiz.enea.it/moda-ml/repository/codelist/draft/gc_T6.xml)

Code	Description	Adoption note	Date of insertion
0	Not wrapped		
1	Totally wrapped		
2	Wrapped, one side open		



3	Wrapped, both sides open		
4	Wrapped, one side open, with show corner		
5	Wrapped in cartons		
6	Double wrapped		

**T9 - ISO4217 - Currency**

currency code

Agency name: ISO

tabella cod.: T9

File codes list (Generic code): [http://www.ebiz.enea.it/moda-ml/repository/codelist/draft/gc\\_T9.xml](http://www.ebiz.enea.it/moda-ml/repository/codelist/draft/gc_T9.xml)

Table not printed: there are 205 elements, more than the maximum specified for printing: 99.