



<http://www.ebiz-tcf.eu>

DRAFT

IMPLEMENTATION GUIDE
TRANSACTION "REACTION TO SERVICE RESULTS"

Version: draft

Date of release: 26/6/2023

Document code: TRC012

technical Documentation: <http://www.ebiz.enea.it>

XML Schemas repository: <http://www.ebiz.enea.it/moda-ml/repository/schema/draft/default.asp>

Guides repository: <http://www.ebiz.enea.it/moda-ml/repository/guide/draft/default.asp>

Guide filename: TRC012-eBIZ-ReactionToServiceResults.pdf

0. PREMISE

This document contains a proposal for the updating and extension of eBIZ specifications starting from the eBIZ version 2018. Under the name of 'Draft version' it is reported the result of an extensive work of analysis and consultation aimed at developing and maintaining eBIZ specifications.

In particular, the content of this proposal is the result of various activities, mainly those carried out within the framework of the **TRICK project** funded by the European Commission: grant agreement 958352, call H2020-LOW-CARBON-CIRCULAR-INDUSTRIES-2020 / H2020-LCCI-2020-EASME-twostage.

The technical contents are backwards compatible with the latest official published version, with the exclusion of the totally new concepts added explicitly for the version that are thought as incremental evolution of the knowledge base.

1. BUSINESS DESCRIPTION

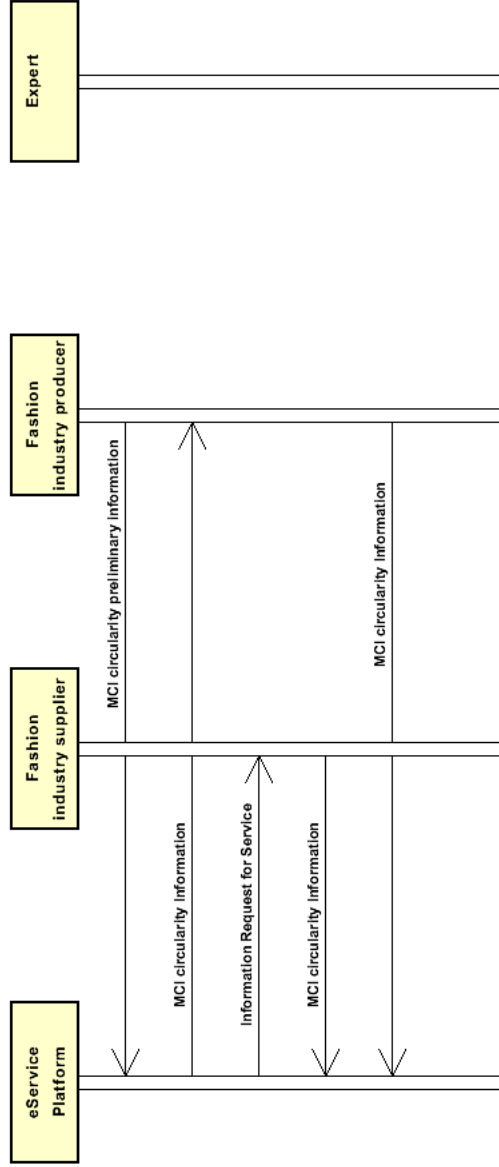
1.1 Scope

This guide aims to illustrate the standard XML format of the document type originated by a service, providing instructions for its use in the context of a TRANSPARENCY SYSTEM involving Fashion Manufacturers, their customers, third parties and in case customs authorities, eBusiness and eCommerce platforms.

All the rules necessary for the construction and validation of the document are expressed through a specific XML schema, which is presented in detail in the paragraph "Implementation Guide".

1.2. Possible scenario

S2.1 Material Circularity Assessment service execution



2. IMPLEMENTATION GUIDE

2.1 General structure of XML document

All the business data that can be exchanged through this class of documents are shown in the following "document structure", that provides a simplified vision of the Schema.

In particular:

- the two numbers following each element define its "cardinality" (minimum and maximum number of occurrences); the minimum equal zero indicates that the element is optional, the minimum greater than zero indicates that is mandatory;
- the bold character denotes the complex elements (aggregates of simple elements) that were built for the sake of functionality and re-usability of some complex informations sets. The child elements in each parent element are easily spotted as "indented";
- the symbol "@" denotes an attribute of the preceding element; here "the usage indicator (optional, required, ...)" is shown in square brackets.

Structure

SRVServiceResultsReaction

@version [Optional] [Default= draft]

@useProfile [Optional]

```
| SRVheader 1-1
| | msgID 0-1
| | msgDate 0-1
| | @dateForm [Optional]
| | senderParty 1-1
| | @role [Optional]
| | @sender [Optional]
| | | id 1-1
| | | @numberingOrg [Optional]
| | | legalName 0-1
| | | dept 0-1
| | | subDept 0-1
| | | person 0-1
| | | @email [Optional]
| | | @phone [Optional]
| | | @fax [Optional]
| | | street 0-1
| | | city 0-1
| | | subCountry 0-1
| | | country 0-1
| | | postCode 0-1
| | | geoCoordinates 0-1
| | | @um [Optional] [Default= DEGD]
| | | @geoRefSystem [Optional]
| | | | xGeoCoord 1-1
| | | | yGeoCoord 1-1
| | | | zGeoCoord 0-1
| | receiverParty 1-1
| | @role [Optional]
| | @sender [Optional]
| | | id 1-1
| | | @numberingOrg [Optional]
| | | legalName 0-1
| | | dept 0-1
| | | subDept 0-1
| | | person 0-1
| | | @email [Optional]
| | | @phone [Optional]
| | | @fax [Optional]
| | | street 0-1
| | | city 0-1
| | | subCountry 0-1
| | | country 0-1
| | | postCode 0-1
| | | geoCoordinates 0-1
| | | @um [Optional] [Default= DEGD]
```

| | | @geoRefSystem [Optional]
| | | | xGeoCoord 1-1
| | | | yGeoCoord 1-1
| | | | zGeoCoord 0-1
| | **platformServiceReference 1-1**
| | | platformServiceCode 1-1
| | | | @codeList [Optional]
| | | serviceTicketID 0-1
| | | serviceRequestedAction 1-1
| | | | @codeList [Optional]

| **instructionsOnDocument 1-99**
| | docID 1-1
| | | @numberingOrg [Optional]
| | discloseTo 0-99
| | | @schemeID [Optional]
| | assignStatusCode 0-1
| | notBeforeDate 0-9
| | | @dateForm [Optional]

2.2 Detailed description of document elements

Following tables show all elements (complex and simple) used in this document. Description includes: 1) element's information: xml tag, name, brief description, data type and syntax constraints; 2) information about use of the element in a particular position in the document: xpath and possible associated notes.

2.2.1 Complex elements (Aggregate Business Information Entities)

Complex elements are those elements whose content is composed of other elements (childs).Complex elements are alphabetically ordered.

geoCoordinates	geographical coordinates (XPath SRVServiceResultsReaction/SRVheader/receiverParty/geoCoordinates) 0-1 (XPath SRVServiceResultsReaction/SRVheader/senderParty/geoCoordinates) 0-1
instructionsOnDocument	instructions on the referred document (might include disclosure policy or status change). (XPath SRVServiceResultsReaction/instructionsOnDocument) 1-99
platformServiceReference	service instruction and reference - base type: string, (XPath SRVServiceResultsReaction/SRVheader/platformServiceReference) 1-1
receiverParty	Details of the party receiving the document. - base type: Nad, (XPath SRVServiceResultsReaction/SRVheader/receiverParty) 1-1
senderParty	Details of the party sending the document. - base type: Nad, (XPath SRVServiceResultsReaction/SRVheader/senderParty) 1-1
SRVheader	header of documents supporting ePlatform services (XPath SRVServiceResultsReaction/SRVheader) 1-1

2.2.2 Simple elements (Basic Business Information Entities)

Simple elements are those elements whose content is characterized by a data type plus a domain of possible values. Simple elements are alphabetically ordered.

assignStatusCode	code of the status to be assigned to the document it refers - base type: decimal, cod. table: NT313 http://www.ebiz.enea.it/moda-ml/repository/codelist/draft/gc_NT313.xml (XPath SRVServiceResultsReaction/instructionsOnDocument/assignStatusCode) 0-1
city	name of the city (town, village) - base type: string, max length: 40, (XPath SRVServiceResultsReaction/SRVheader/receiverParty/city) 0-1 (XPath SRVServiceResultsReaction/SRVheader/senderParty/city) 0-1
@codeList	it specifies the URL where the list of codes used to make an instance of the element can be found - base type: string, max length: 255, (XPath SRVServiceResultsReaction/SRVheader/platformServiceReference/serviceRequestedAction/@codeList) [Optional] - nota: <i>Insert URL codelist of the platform services actions available.</i> (XPath SRVServiceResultsReaction/SRVheader/platformServiceReference/platformServiceCode/@codeList) [Optional] - nota: <i>indicate the URL of the platform supplying the service</i>
country	code of the nation - base type: string, cod. table: T10 http://www.ebiz.enea.it/moda-ml/repository/codelist/draft/gc_T10.xml (XPath SRVServiceResultsReaction/SRVheader/senderParty/country) 0-1 (XPath SRVServiceResultsReaction/SRVheader/receiverParty/country) 0-1

@dateForm	format used for the date - base type: string, cod. table: NT29 http://www.ebiz.enea.it/moda-ml/repository/codelist/draft/gc_NT29.xml (XPath SRVServiceResultsReaction/instructionsOnDocument/ notBeforeDate/@dateForm) [Optional] (XPath SRVServiceResultsReaction/SRVheader/msgDate/@dateForm) [Optional]
dept	name or code of a department - base type: string, max length: 40, (XPath SRVServiceResultsReaction/SRVheader/senderParty/dept) 0-1 (XPath SRVServiceResultsReaction/SRVheader/receiverParty/dept) 0-1
discloseTo	Specifies to whom allow the access of the content to which it is associated. Use the values of NT311 table or indicate the type of actor or subject ID to be granted access - base type: string, cod. table: NT311 http://www.ebiz.enea.it/moda-ml/repository/codelist/draft/gc_NT311.xml (XPath SRVServiceResultsReaction/instructionsOnDocument/discloseTo) 0-99 - note: allows to indicate more actors to whom to allow access to the contents
docID	identification number of the referenced document - base type: string, max length: 80, (XPath SRVServiceResultsReaction/instructionsOnDocument/docID) 1-1
@email	electronic mail address of the contact person within a Party - base type: string, max length: 250, (XPath SRVServiceResultsReaction/SRVheader/senderParty/ person/@email) [Optional] (XPath SRVServiceResultsReaction/SRVheader/receiverParty/ person/@email) [Optional]
@fax	fax number of the contact person within a Party - base type: string, max length: 35, (XPath SRVServiceResultsReaction/SRVheader/receiverParty/ person/@fax) [Optional] (XPath SRVServiceResultsReaction/SRVheader/senderParty/ person/@fax) [Optional]
@geoRefSystem	georeference system adopted for the coordinate (in example wgs84 with decimal degree o degree with minute and seconds) - base type: string, (XPath SRVServiceResultsReaction/SRVheader/senderParty/ geoCoordinates/@geoRefSystem) [Optional] (XPath SRVServiceResultsReaction/SRVheader/receiverParty/ geoCoordinates/@geoRefSystem) [Optional]
id	primary identification code of a Party; it is recommended to use an EORI number (with @numberingOrg= "EO") or the format: nation code (ISO 3166) + national tax code (i.e. VAT identification number) with @numberingOrg= "MF" - base type: string, max length: 15, (XPath SRVServiceResultsReaction/SRVheader/senderParty/id) 1-1 (XPath SRVServiceResultsReaction/SRVheader/receiverParty/id) 1-1
legalName	legal name - base type: string, max length: 250, (XPath SRVServiceResultsReaction/SRVheader/senderParty/legalName) 0-1 (XPath SRVServiceResultsReaction/SRVheader/receiverParty/legalName) 0-1
msgDate	date of issue of the present message (xml document), according to one of the patterns YYYY-MM-DD, YYYY-MM-DD:HH-MM or YYYY-WW. - base type: string, (XPath SRVServiceResultsReaction/SRVheader/msgDate) 0-1
msgID	key identifier of the business document in the information system of the issuing Party. In case of more despatches of the same business document, it is unchanged. - base type: string, max length: 35, (XPath SRVServiceResultsReaction/SRVheader/msgID) 0-1
notBeforeDate	earliest date possible to begin an activity, according to one of the patterns YYYY-MM-DD, YYYY-MM-DD:HH-MM or YYYY-WW. - base type: string, (XPath SRVServiceResultsReaction/instructionsOnDocument/notBeforeDate) 0-9
@numberingOrg	code specifying the organisation who has created or owns the coding or numbering sy

	<p>stem</p> <p>- base type: string, cod. table: NT6 http://www.ebiz.enea.it/moda-ml/repository/codelist/draft/gc_NT6.xml (XPath SRVServiceResultsReaction/instructionsOnDocument/docID/@numberingOrg) [Optional]</p> <p>- nota: here can be specified whose document numbering is used (e.g.: Client, Supplier, ..) (XPath SRVServiceResultsReaction/SRVheader/senderParty/id/@numberingOrg) [Optional] (XPath SRVServiceResultsReaction/SRVheader/receiverParty/id/@numberingOrg) [Optional]</p>
person	<p>name of a person (e.g. contact person within an organization)</p> <p>- base type: string, max length: 40, (XPath SRVServiceResultsReaction/SRVheader/senderParty/person) 0-1 (XPath SRVServiceResultsReaction/SRVheader/receiverParty/person) 0-1</p>
@phone	<p>phone number of the contact person within a Party</p> <p>- base type: string, max length: 35, (XPath SRVServiceResultsReaction/SRVheader/senderParty/person/@phone) [Optional] (XPath SRVServiceResultsReaction/SRVheader/receiverParty/person/@phone) [Optional]</p>
platformServiceCode	<p>code of the available service</p> <p>- base type: string, cod. table: TRK01 http://www.ebiz.enea.it/moda-ml/repository/codelist/draft/gc_TRK01.xml (XPath SRVServiceResultsReaction/SRVheader/platformServiceReference/platformServiceCode) 1-1</p>
postCode	<p>code defining the postal zone</p> <p>- base type: string, max length: 10, (XPath SRVServiceResultsReaction/SRVheader/receiverParty/postCode) 0-1 (XPath SRVServiceResultsReaction/SRVheader/senderParty/postCode) 0-1</p>
@role	<p>Third Party role qualifier</p> <p>- base type: string, cod. table: NT2 http://www.ebiz.enea.it/moda-ml/repository/codelist/draft/gc_NT2.xml (XPath SRVServiceResultsReaction/SRVheader/receiverParty/@role) [Optional]</p> <p>- nota: The use of this attribute is mandatory when the element to which it is associated has TRCHeader as its parent. (XPath SRVServiceResultsReaction/SRVheader/senderParty/@role) [Optional]</p> <p>- nota: The use of this attribute is mandatory when the element to which it is associated has TRCHeader as its parent.</p>
@schemeID	<p>identifier of an identification scheme</p> <p>- base type: string, (XPath SRVServiceResultsReaction/instructionsOnDocument/discloseTo/@schemeID) [Optional]</p>
@sender	<p>qualifier that specifies the Party issuing of the document</p> <p>- base type: boolean, (XPath SRVServiceResultsReaction/SRVheader/receiverParty/@sender) [Optional]</p> <p>- nota: This attribute is mandatory when the STYLESHEET must be used. (XPath SRVServiceResultsReaction/SRVheader/senderParty/@sender) [Optional]</p> <p>- nota: This attribute is mandatory when the STYLESHEET must be used.</p>
serviceRequestedAction	<p>requested service action</p> <p>- base type: string, cod. table: TRK02 http://www.ebiz.enea.it/moda-ml/repository/codelist/draft/gc_TRK02.xml (XPath SRVServiceResultsReaction/SRVheader/platformServiceReference/serviceRequestedAction) 1-1</p>
serviceTicketID	<p>service ticket identifier</p> <p>- base type: string, (XPath SRVServiceResultsReaction/SRVheader/platformServiceReference/serviceTicketID) 0-1</p> <p>- note: mandatory after activation</p>
street	<p>street and building number identifying a location</p>

	<p>- base type: string, max length: 80, (XPath SRVServiceResultsReaction/SRVheader/senderParty/street) 0-1 (XPath SRVServiceResultsReaction/SRVheader/receiverParty/street) 0-1</p>
subCountry	<p>short name or code of the sub-country entity - base type: string, max length: 9, (XPath SRVServiceResultsReaction/SRVheader/senderParty/subCountry) 0-1 (XPath SRVServiceResultsReaction/SRVheader/receiverParty/subCountry) 0-1</p>
subDept	<p>name or code of a department - base type: string, max length: 40, (XPath SRVServiceResultsReaction/SRVheader/senderParty/subDept) 0-1 (XPath SRVServiceResultsReaction/SRVheader/receiverParty/subDept) 0-1</p>
@um	<p>specification of the unit of measure - base type: string, cod. table: NT7 http://www.ebiz.enea.it/moda-ml/repository/codelist/draft/gc_NT7.xml (XPath SRVServiceResultsReaction/SRVheader/senderParty/ geoCoordinates/@um) [Optional] [Default= DEGD] - nota: <i>when not specified assume decimal DEGREES</i> (XPath SRVServiceResultsReaction/SRVheader/receiverParty/ geoCoordinates/@um) [Optional] [Default= DEGD] - nota: <i>when not specified assume decimal DEGREES</i></p>
@useProfile	<p>use profile to which the present document is compliant if it was agreed by the parties. It is suggested a URI with reference to the firms or the URL of the profile. - base type: string, (XPath SRVServiceResultsReaction/@useProfile) [Optional]</p>
@version	<p>Dictionary version from which the instance has been created - base type: string, cod. table: NT100 http://www.ebiz.enea.it/moda-ml/repository/codelist/draft/gc_NT100.xml (XPath SRVServiceResultsReaction/@version) [Optional] [Default= draft]</p>
xGeoCoord	<p>geographical coordinate x , corresponding to latitude - base type: decimal, (XPath SRVServiceResultsReaction/SRVheader/receiverParty/ geoCoordinates/xGeoCoord) 1-1 (XPath SRVServiceResultsReaction/SRVheader/senderParty/ geoCoordinates/xGeoCoord) 1-1</p>
yGeoCoord	<p>geographical coordinate y , corresponding to longitude - base type: decimal, (XPath SRVServiceResultsReaction/SRVheader/senderParty/ geoCoordinates/yGeoCoord) 1-1 (XPath SRVServiceResultsReaction/SRVheader/receiverParty/ geoCoordinates/yGeoCoord) 1-1</p>
zGeoCoord	<p>geographical coordinate z , corresponding to altitude - base type: decimal, (XPath SRVServiceResultsReaction/SRVheader/senderParty/ geoCoordinates/zGeoCoord) 0-1 - note: <i>altitude might be omitted</i> (XPath SRVServiceResultsReaction/SRVheader/receiverParty/ geoCoordinates/zGeoCoord) 0-1 - note: <i>altitude might be omitted</i></p>

2.3 Enumeration tables

List of enumeration tables used in the XML document. You can find all the tables with the corresponding codes at:
<http://www.ebiz.enea.it/eBIZ/imple/eBIZTCU-draft.asp?lingua=en&pag=6>

NT100 - eBIZ TCFUpstream version

NT2 - third party qualifier

NT29 - format of a date

NT311 - information disclosure level

NT313 - status of the document

NT6 - coding system owner/issuer

NT7 - unit of measure

T10 - ISO3166 - Country

TRK01 - list of available services

TRK02 - list of services functions

(the most relevant tables are detailed in the following Annexes too)

ACKNOWLEDGEMENT



This action is part of the TRICK project, which has received funding from Horizon 2020 research and innovation programme under grant agreement No. 958352 of the European Union.

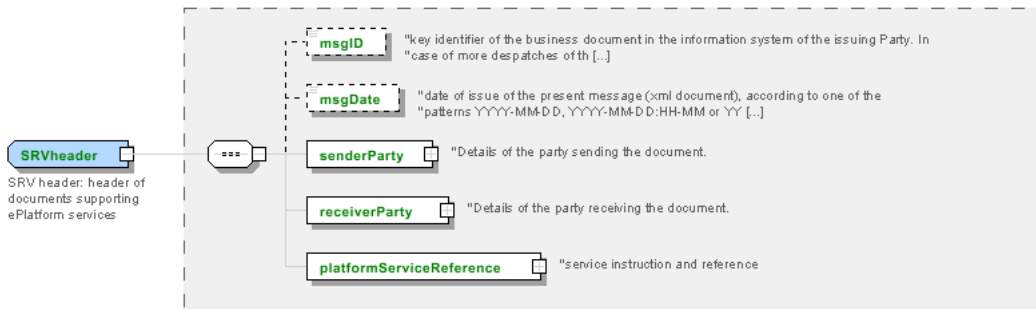
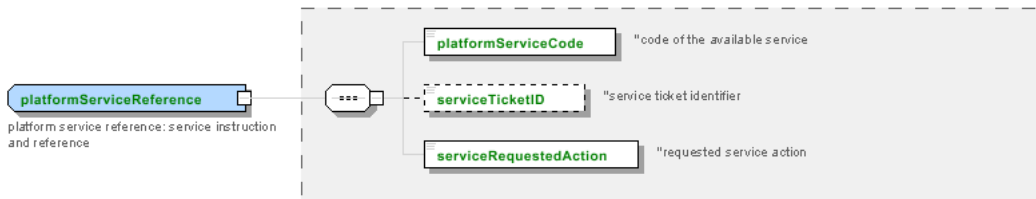
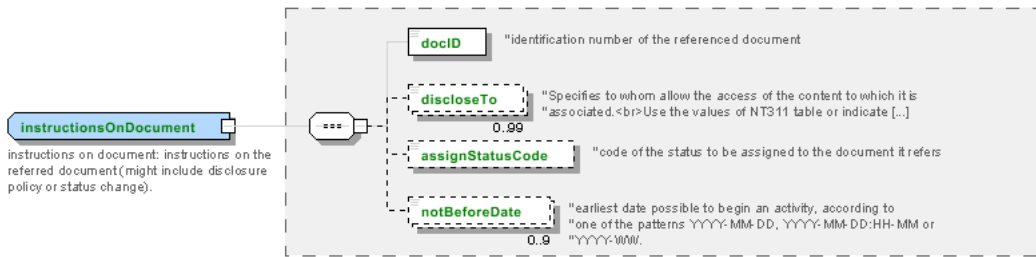
DISCLAIMER

The content of this document represents the views of the authors only and is their sole responsibility; it cannot be considered to reflect the views of the European Commission or any other body of the European Union.

The European Commission does not accept any responsibility for use that may be made of the information it contains.

Annex A

Representative images of the principal complex elements' structure.



Annex B

NT100 - eBIZ TCFUpstream version

dictionary version

Agency name: eBIZ

Decoding table: NT100

File codes list (Generic code): http://www.ebiz.enea.it/moda-ml/repository/codelist/draft/gc_NT100.xml

Code	Description	Adoption note	Date of insertion
2013-1	v2013-1		01/07/2013
2018-1	v2018-1		04/11/2018
draft	draft		08/09/2017

NT2 - third party qualifier

Third Party role qualifier

Agency name: eBIZ

Decoding table: NT2

File codes list (Generic code): http://www.ebiz.enea.it/moda-ml/repository/codelist/draft/gc_NT2.xml

Code	Description	Adoption note	Date of insertion
AG	Sales Agent		
AU	Auditor		08/04/2019
BU	Buyer		13/06/2022
CE	Certification authority		08/04/2019
CM	Commissioner		13/06/2022
CO	Quality Controller		
CU	Customs authority		13/06/2022
DC	Response to		
DF	Invoicee		
DI	Copy to (CC)		28/10/2014
DM	Consignee		
DP	Consignment address (Delivery Party)		
EX	Expert		13/06/2022
IM	Importer		
OR	Originator		10/09/2014
SC	Sub contractor		10/04/2019
SM	Service/ePlatform manager		08/04/2019

SP	Forwarder		
SU	Supplier		13/06/2022
TL	Test or analysis laboratory		13/06/2022
TX	Tax Representative		

NT29 - format of a date

format used for the date

Agency name: eBIZ

Decoding table: NT29

File codes list (Generic code): http://www.ebiz.enea.it/moda-ml/repository/codelist/draft/gc_NT29.xml

Code	Description	Adoption note	Date of insertion
D	YYYY-MM-DD		
M	YYYY-MM-DD:HH-MM (date and time)		
S	AAAA-MM-GG:HH-MM-SS (date and time with seconds)		13/06/2022
W	YYYY-WW		

NT311 - information disclosure level

Agency name: eBIZ for TRICK

Decoding table: NT311

File codes list (Generic code): http://www.ebiz.enea.it/moda-ml/repository/codelist/draft/gc_NT311.xml

Code	Description	Adoption note	Date of insertion
1	public		22/07/2022
2	disclosed to any partner(s) involved in the activity		22/07/2022
3	disclosed to specific category of partner involved in the activity		22/07/2022
4	disclosed upon an explicit authorisation		22/07/2022
9	fully confidential		22/07/2022

NT313 - status of the document

subset of the values from the United Nations Code List (UNCL) 4405 code list from UNCEFACT

Agency name: eBIZ for TRICK (elaboration on UNECE)

Decoding table: NT313

File codes list (Generic code): http://www.ebiz.enea.it/moda-ml/repository/codelist/draft/gc_NT313.xml

Other link: <https://service.unece.org/trade/untdid/d21b/tred/tred4405.htm#>

Code	Description	Adoption note	Date of insertion
112	Incomplete		22/07/2022
21	Temporary		22/07/2022
39	Approved		22/07/2022
40	Withdrawn		22/07/2022
41	Rejected		22/07/2022
45	No status		22/07/2022
67	Preliminary		22/07/2022
70	Issued		22/07/2022
73	Confirmed (by reviewer)		30/08/2022
74	Expiry date exceeded		22/07/2022
97	Pending		22/07/2022

NT6 - coding system owner/issuer

code specifying the organisation who has created or owns the registers of the present coding or numbering system

Agency name: eBIZ

Decoding table: NT6

File codes list (Generic code): http://www.ebiz.enea.it/moda-ml/repository/codelist/draft/gc_NT6.xml

Code	Description	Adoption note	Date of insertion
CBR	National customs brokers registry		12/06/2023
CL	Customer/buyer		
CO	Quality Controller		
DU	D-U-N-S registry (Data Universal Numbering System)		04/05/2023
EB	eBIZ	replaces 'ML'	18/03/2019
EN	GS1 (ex-EAN International)		
EO	Registro EORI (Economic Operators Registration and Identification number)		04/03/2023
ES	e-Stockflow	DEPRECATED	
FO	Supplier		
GS	GS1		01/07/2013
MF	national taxation authority (i.e. VAT codes registry)		
ML	Moda-ML	DEPRECATED	
PL	Application Platform		13/06/2022
REX	Registered Exporter system (REX)		19/05/2023
SP	Service Provider		
SU	Enterprise Identification Number UID	Only switzerland	04/03/2023

NT7 - unit of measure

specification of the unit of measure, it is a sub set of table Unit of Measure Code - UN/ECE REC 20 delivered by United Nations Economic Commission for Europe (UN/ECE)

Agency name: eBIZ / UN/ECE

Decoding table: NT7

File codes list (Generic code): http://www.ebiz.enea.it/moda-ml/repository/codelist/draft/gc_NT7.xml

Other link: <http://docs.oasis-open.org/ubl/os-UBL-2.1/cl/gc/default/UnitOfMeasureCode-2.1.gc#>

Code	Description	Adoption note	Date of insertion
CMK	square centimetre		20/12/2017
CMQ	cubic centimetre		20/12/2017
CMT	centimetre		
CNE	centiNewton		
CO2TON	ton of CO2		10/09/2014
COUPLES	couples		
DAY	day		22/08/2022
DEGD	decimal degrees		04/07/2022
DEGMS	degrees with minutes and seconds		01/07/2022
DMQ	cubic decimetre		
E37	pixel		11/04/2018
GRM	gram		
HUR	hour		
INH	inch		
KGM	kilogram		
KMT	kilometer		
KWH	kilowatthours		10/09/2014
LBR	pound		
MCG	microgram		23/08/2022
MG	milligram		23/08/2022
MIN	minute		
MMK	square millimetre		20/12/2017
MONTH	month		22/08/2022
MSEC	millisecond (time)		22/08/2022
MTK	square metre		20/12/2017
MTQ	cubic metre		
MTR	metre		
NMB	numero		
ONZ	ounce		

P1	percent		
PPM	parts per milion		
PZ	piece		
RPM	rounds per metre		
SEC	second (time)		22/08/2022
YEAR	year		22/08/2022
YRD	yard		

T10 - ISO3166 - Country

code of the nation

Agency name: ISO

Decoding table: T10

File codes list (Generic code): http://www.ebiz.enea.it/moda-ml/repository/codelist/draft/gc_T10.xml

Table not printed: there are 240 elements, more than the maximum specified for printing: 99.

TRK01 - list of available services

Agency name: TRICK project

Decoding table: TRK01

File codes list (Generic code): http://www.ebiz.enea.it/moda-ml/repository/codelist/draft/gc_TRK01.xml

Code	Description	Adoption note	Date of insertion
0	Traceability		07/09/2022
1	PCO, Preferential Origin certification		07/09/2022
2	Circular Manufacturing assessment		07/09/2022
3	PEF and environmental footprint		07/09/2022
4	Health protection assessment		07/09/2022
5	Social and Ethical protection assessment		07/09/2022

TRK02 - list of services functions

Agency name: TRICK project

Decoding table: TRK02

File codes list (Generic code): http://www.ebiz.enea.it/moda-ml/repository/codelist/draft/gc_TRK02.xml

Code	Description	Adoption note	Date of insertion
activate	service activation		07/09/2022

execution	service execution		07/09/2022
getinfo	getting information from the service		07/09/2022
proposedreport	proposal for the final report		07/09/2022
reportapproval	final report approved		07/09/2022
reportrejected	final report rejected		07/09/2022
setinfo	uploading information to the service		07/09/2022