



<http://www.ebiz-tcf.eu>

DRAFT

IMPLEMENTATION GUIDE
TRANSACTION "HEALTH PROTECTION PRELIMINARY
INFORMATION"

Version: draft

Date of release: 26/6/2023

Document code: TRC006

technical Documentation: <http://www.ebiz.enea.it>

XML Schemas repository: <http://www.ebiz.enea.it/moda-ml/repository/schema/draft/default.asp>

Guides repository: <http://www.ebiz.enea.it/moda-ml/repository/guide/draft/default.asp>

Guide filename: TRC006-eBIZ-HealthProtectionPreliminaryInformation.pdf

0. PREMISE

This document contains a proposal for the updating and extension of eBIZ specifications starting from the eBIZ version 2018. Under the name of 'Draft version' it is reported the result of an extensive work of analysis and consultation aimed at developing and maintaining eBIZ specifications.

In particular, the content of this proposal is the result of various activities, mainly those carried out within the framework of the **TRICK project** funded by the European Commission: grant agreement 958352, call H2020-LOW-CARBON-CIRCULAR-INDUSTRIES-2020 / H2020-LCCI-2020-EASME-twostage.

The technical contents are backwards compatible with the latest official published version, with the exclusion of the totally new concepts added explicitly for the version that are thought as incremental evolution of the knowledge base.

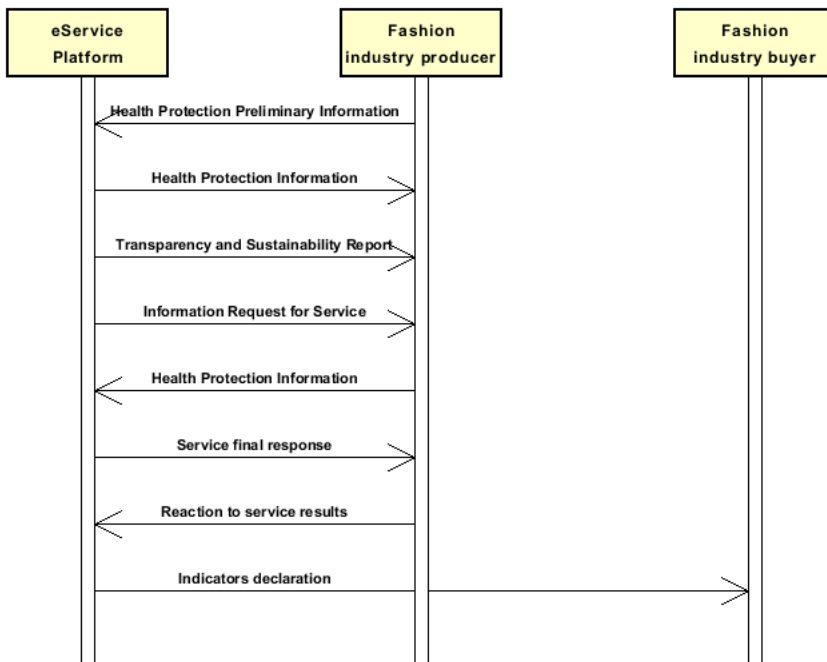
1. BUSINESS DESCRIPTION

1.1 Scope

This guide aims to illustrate the standard XML format of the document type "Health Protection Preliminary Information", providing instructions for its use in the context of a TRANSPARENCY SYSTEM involving Fashion Manufacturers, their customers, third parties and in case customs authorities, eBusiness and eCommerce platforms. All the rules necessary for the construction and validation of the document are expressed through a specific XML schema, which is presented in detail in the paragraph "Implementation Guide".

1.2. Possible scenario

S5.1 Health Protection service execution



2. IMPLEMENTATION GUIDE

2.1 General structure of XML document

All the business data that can be exchanged through this class of documents are shown in the following "document structure", that provides a simplified vision of the Schema.

In particular:

- the two numbers following each element define its "cardinality" (minimum and maximum number of occurrences); the minimum equal zero indicates that the element is optional, the minimum greater than zero indicates that is mandatory;
- the bold character denotes the complex elements (aggregates of simple elements) that were built for the sake of functionality and re-usability of some complex informations sets. The child elements in each parent element are easily spotted as "indented";
- the symbol "@" denotes an attribute of the preceding element; here "the usage indicator (optional, required, ...)" is shown in square brackets.

Structure

HPPreliminaryInformation

@version [Optional] [Default= draft]

@useProfile [Optional]

```
| SRVheader 1-1
| | msgID 0-1
| | msgDate 0-1
| | @dateForm [Optional]
| | senderParty 1-1
| | @role [Optional]
| | @sender [Optional]
| | | id 1-1
| | | | @numberingOrg [Optional]
| | | legalName 0-1
| | | dept 0-1
| | | subDept 0-1
| | | person 0-1
| | | | @email [Optional]
| | | | @phone [Optional]
| | | | @fax [Optional]
| | | street 0-1
| | | city 0-1
| | | subCountry 0-1
| | | country 0-1
| | | postCode 0-1
| | | geoCoordinates 0-1
| | | | @um [Optional] [Default= DEGD]
| | | | @geoRefSystem [Optional]
| | | | | xGeoCoord 1-1
| | | | | yGeoCoord 1-1
| | | | | zGeoCoord 0-1
| | receiverParty 1-1
| | @role [Optional]
| | @sender [Optional]
| | | id 1-1
| | | | @numberingOrg [Optional]
| | | legalName 0-1
| | | dept 0-1
| | | subDept 0-1
| | | person 0-1
| | | | @email [Optional]
| | | | @phone [Optional]
| | | | @fax [Optional]
| | | street 0-1
| | | city 0-1
| | | subCountry 0-1
| | | country 0-1
| | | postCode 0-1
| | | geoCoordinates 0-1
| | | | @um [Optional] [Default= DEGD]
```

```

| | | @geoRefSystem [Optional]
| | | | xGeoCoord 1-1
| | | | yGeoCoord 1-1
| | | | zGeoCoord 0-1
| | platformServiceReference 1-1
| | | platformServiceCode 1-1
| | | | @codeList [Optional]
| | | | serviceTicketID 0-1
| | | | serviceRequestedAction 1-1
| | | | @codeList [Optional]

```

ProductIdentification 1-1

```

| | uniqueProductID 1-1
| | | @schemeID [Required]
| | | objectTypeCode 1-1
| | | description 0-9
| | | | @ln [Optional]

```

- choose -

rawCode 0-2

```

| | | @numberingOrg [Optional]
| | | | art 1-1
| | | | | @numberingOrg [Optional]
| | | | | @codeList [Optional]
| | | | | @listName [Optional]
| | | | | @listVersion [Optional]
| | | | color 0-1
| | | | | @numberingOrg [Optional]
| | | | | @codeList [Optional]
| | | | | @listName [Optional]
| | | | | @listVersion [Optional]
| | | | added 0-9
| | | | | @numberingOrg [Optional]
| | | | | @addType [Optional]
| | | | description 0-unbounded
| | | | | @ln [Optional]

```

- or -

yarnCode 0-2

```

| | | @numberingOrg [Optional] [Default= CL]
| | | | art 1-1
| | | | | @numberingOrg [Optional]
| | | | | @codeList [Optional]
| | | | | @listName [Optional]
| | | | | @listVersion [Optional]
| | | | color 0-1
| | | | | @numberingOrg [Optional]
| | | | | @codeList [Optional]
| | | | | @listName [Optional]
| | | | | @listVersion [Optional]
| | | | added 0-9
| | | | | @numberingOrg [Optional]
| | | | | @addType [Optional]
| | | | description 0-unbounded
| | | | | @ln [Optional]

```

- or -

texCode 0-2

```

| | | @numberingOrg [Optional]
| | | | art 1-1
| | | | | @numberingOrg [Optional]
| | | | | @codeList [Optional]
| | | | | @listName [Optional]
| | | | | @listVersion [Optional]
| | | | pattern 0-1
| | | | | @numberingOrg [Optional]
| | | | | @codeList [Optional]
| | | | | @listName [Optional]
| | | | | @listVersion [Optional]
| | | | color 0-1
| | | | | @numberingOrg [Optional]

```

| | @codeList [Optional]
| | @listName [Optional]
| | @listVersion [Optional]
| | added 0-9
| | @numberingOrg [Optional]
| | @addType [Optional]
| | description 0-unbounded
| | @ln [Optional]

- or -

| | **acsCode 1-2**
| | @numberingOrg [Optional]
| | art 1-1
| | | @numberingOrg [Optional]
| | | @codeList [Optional]
| | | @listName [Optional]
| | | @listVersion [Optional]
| | pattern 0-1
| | | @numberingOrg [Optional]
| | | @codeList [Optional]
| | | @listName [Optional]
| | | @listVersion [Optional]
| | color 0-1
| | | @numberingOrg [Optional]
| | | @codeList [Optional]
| | | @listName [Optional]
| | | @listVersion [Optional]
| | added 0-9
| | | @numberingOrg [Optional]
| | | @addType [Optional]
| | description 0-unbounded
| | @ln [Optional]

- or -

| | **garmentPartCode 0-2**
| | @numberingOrg [Optional]
| | gPart 1-1
| | mod 1-1
| | | @numberingOrg [Optional]
| | | @codeList [Optional]
| | | @listName [Optional]
| | | @listVersion [Optional]
| | fabric 0-1
| | | @numberingOrg [Optional]
| | | @codeList [Optional]
| | | @listName [Optional]
| | | @listVersion [Optional]
| | color 0-1
| | | @numberingOrg [Optional]
| | | @codeList [Optional]
| | | @listName [Optional]
| | | @listVersion [Optional]
| | added 0-19
| | | @numberingOrg [Optional]
| | | @addType [Optional]
| | size 0-1
| | | @numberingOrg [Optional]
| | | @codeList [Optional]
| | | @listName [Optional]
| | | @listVersion [Optional]
| | description 0-unbounded
| | @ln [Optional]

- or -

| | **garmentCode 0-2**
| | @numberingOrg [Optional]
| | - choose -
| | | **garmentCodeB 1-1**
| | | @numberingOrg [Optional]
| | | | mod 1-1
| | | | @numberingOrg [Optional]

```

| | | @codeList [Optional]
| | | @listName [Optional]
| | | @listVersion [Optional]
| fabric 0-1
| | | @numberingOrg [Optional]
| | | @codeList [Optional]
| | | @listName [Optional]
| | | @listVersion [Optional]
| color 0-1
| | | @numberingOrg [Optional]
| | | @codeList [Optional]
| | | @listName [Optional]
| | | @listVersion [Optional]
| garmentVariant 0-9
| | | variantType 1-1
| | | | @numberingOrg [Optional]
| | | | @codeList [Optional]
| | | | @listName [Optional]
| | | | @listVersion [Optional]
| | | variantCode 1-1
| | | | @numberingOrg [Optional]
| | | | @codeList [Optional]
| | | | @listName [Optional]
| | | | @listVersion [Optional]
| drop 0-1
| | | @numberingOrg [Optional]
| | | @codeList [Optional]
| | | @listName [Optional]
| | | @listVersion [Optional]
| size 0-1
| | | @numberingOrg [Optional]
| | | @codeList [Optional]
| | | @listName [Optional]
| | | @listVersion [Optional]
| artGroup 0-1
| | | @numberingOrg [Optional]
| | | @codeList [Optional]
| | | @listName [Optional]
| | | @listVersion [Optional]
| added 0-9
| | | @numberingOrg [Optional]
| | | @addType [Optional]
| description 0-unbounded
| | | @ln [Optional]
- or -
| | | garmentCodeA 1-1
| | | | art 1-1
| | | | | @numberingOrg [Optional]
| | | | | @codeList [Optional]
| | | | | @listName [Optional]
| | | | | @listVersion [Optional]
| | | | description 0-unbounded
| | | | @ln [Optional]
- end choose -
- end choose -
| | | note 0-99
| | | | @numberingOrg [Optional]
| | | | @codeList [Optional]
| | | | @noteLabel [Optional]
| productCompos 1-1
| | | percCompos 1-99
| | | | @fibre [Required]
| | | | @materialSource [Optional]
| | | | @recyclingProcessMethod [Optional]
| | | | @percSourcesRenewable [Optional]
| | | | @validationMethod [Optional]
| | | | @recyclingProcessEfficiency [Optional]

```

processStepsList 1-1

@limitedByDisclosureIndicator [Optional]

@exhaustiveInformation [Required]

@disclosureLevel [Required]

@storageAction [Required]

processStep 1-unbounded

@progr [Required]

@internallyPerformed [Optional]

processStepID 1-1

manufacturingOperationCode 1-1

description 0-9

@ln [Optional]

activityLocation 0-99

@part [Optional] [Default= 100]

location 0-1

@LRI [Optional]

legalName 0-1

dept 0-1

subDept 0-1

person 0-1

@email [Optional]

@phone [Optional]

@fax [Optional]

street 0-1

city 0-1

subCountry 0-1

country 0-1

postCode 0-1

geoCoordinates 0-1

@um [Optional] [Default= DEGD]

@geoRefSystem [Optional]

xGeoCoord 1-1

yGeoCoord 1-1

zGeoCoord 0-1

note 0-99

@numberingOrg [Optional]

@codeList [Optional]

@noteLabel [Optional]

certificate 0-99

@docStatusCode [Required]

@docValidity [Required]

docID 1-1

@numberingOrg [Optional]

certificateID 1-1

@schemeID [Optional]

certificationStandardName 1-1

@standardOwner [Required]

docDate 1-1

@dateForm [Optional]

title 0-unbounded

@ln [Optional]

description 0-unbounded

@ln [Optional]

validityStart 0-1

@dateForm [Optional]

validityEnd 0-1

@dateForm [Optional]

validityExtensionDate 0-1

@dateForm [Optional]

sustainabilityCharacteristicText 0-99

@ln [Optional]

issuerParty 1-1

id 0-1

@numberingOrg [Optional]

legalName 0-1

dept 0-1

- | subDept 0-1
- | person 0-1
- | | *@email [Optional]*
- | | *@phone [Optional]*
- | | *@fax [Optional]*
- | street 0-1
- | city 0-1
- | subCountry 0-1
- | country 0-1
- | postCode 0-1
- | **geoCoordinates 0-1**
- | | *@um [Optional] [Default= DEGD]*
- | | *@geoRefSystem [Optional]*
- | | | xGeoCoord 1-1
- | | | yGeoCoord 1-1
- | | | zGeoCoord 0-1
- | issuerAccreditationInfo 0-1
- | **certifiedParty 1-1**
- | id 0-1
- | | *@numberingOrg [Optional]*
- | legalName 0-1
- | dept 0-1
- | subDept 0-1
- | person 0-1
- | | *@email [Optional]*
- | | *@phone [Optional]*
- | | *@fax [Optional]*
- | street 0-1
- | city 0-1
- | subCountry 0-1
- | country 0-1
- | postCode 0-1
- | **geoCoordinates 0-1**
- | | *@um [Optional] [Default= DEGD]*
- | | *@geoRefSystem [Optional]*
- | | | xGeoCoord 1-1
- | | | yGeoCoord 1-1
- | | | zGeoCoord 0-1
- | **certifiedEntity 0-unbounded**
- | entityID 1-3
- | | *@schemeID [Required]*
- | entityTypeCode 1-1
- | description 0-9
- | | *@ln [Optional]*
- | **attachment 0-1**
- | | *@uid [Optional]*
- | fileName 0-1
- | | *@numberingOrg [Optional]*
- | binaryObject 0-1
- | | *@format [Optional]*
- | | *@mime [Optional]*
- | | *@encoding [Optional]*
- | | *@characterSet [Optional]*
- | **externalReference 0-99**
- | | uri 1-1
- | | | *@isURL [Optional] [Default= true]*
- | | | mimeTypeCode 0-1
- | | | formatCode 0-1
- | | | encodingCode 0-1
- | | | characterSetCode 0-1
- | hashFootprint 0-1
- | | *@schemeID [Optional]*
- | | *@hashMethod [Required]*
- | **blockChainReference 0-9**
- | | uri 1-1
- | | | *@isURL [Optional] [Default= true]*
- | | transactionReceipt 1-9
- | note 0-99

- | | @numberingOrg [Optional]
- | | @codeList [Optional]
- | | @noteLabel [Optional]

selfAssertion 0-99

- | | @disclosureLevel [Optional]
- | | @docStatusCode [Optional]
- | | sustainabilityCharacteristicText 0-99
 - | | @ln [Optional]
- | | assertionCategory 1-1
- | | description 1-99
 - | | @ln [Optional]

issuerParty 1-1

- | | id 0-1
 - | | @numberingOrg [Optional]
- | | legalName 0-1
- | | dept 0-1
- | | subDept 0-1
- | | person 0-1
 - | | @email [Optional]
 - | | @phone [Optional]
 - | | @fax [Optional]
- | | street 0-1
- | | city 0-1
- | | subCountry 0-1
- | | country 0-1
- | | postCode 0-1
- | | **geoCoordinates 0-1**
 - | | @um [Optional] [Default= DEGD]
 - | | @geoRefSystem [Optional]
 - | | xGeoCoord 1-1
 - | | yGeoCoord 1-1
 - | | zGeoCoord 0-1
- | | issuerAccreditationInfo 0-1

selfAssertionEntity 0-unbounded

- | | entityID 1-3
 - | | @schemeID [Required]
- | | entityTypeCode 1-1
- | | description 0-9
 - | | @ln [Optional]

externalRefDoc 0-99

- | | docID 1-1
 - | | @numberingOrg [Optional]
- | | docDate 0-1
 - | | @dateForm [Optional]
- | | title 0-unbounded
 - | | @ln [Optional]
- | | description 0-unbounded
 - | | @ln [Optional]
- | | validityStart 0-1
 - | | @dateForm [Optional]
- | | validityEnd 0-1
 - | | @dateForm [Optional]
- | | documentType 0-1

issuerParty 0-1

- | | id 0-1
 - | | @numberingOrg [Optional]
- | | legalName 0-1
- | | dept 0-1
- | | subDept 0-1
- | | person 0-1
 - | | @email [Optional]
 - | | @phone [Optional]
 - | | @fax [Optional]
- | | street 0-1
- | | city 0-1
- | | subCountry 0-1
- | | country 0-1

```

| | | | postCode 0-1
| | | | geoCoordinates 0-1
| | | | @um [Optional] [Default= DEGD]
| | | | @geoRefSystem [Optional]
| | | | | xGeoCoord 1-1
| | | | | yGeoCoord 1-1
| | | | | zGeoCoord 0-1
| | | | issuerAccreditationInfo 0-1
| | | | signatureInformation 0-1
| | | | | signatureTypeCode 1-1
| | | | | signatoryParty 0-unbounded
| | | | | | id 0-1
| | | | | | @numberingOrg [Optional]
| | | | | | legalName 0-1
| | | | | | dept 0-1
| | | | | | subDept 0-1
| | | | | | person 0-1
| | | | | | @email [Optional]
| | | | | | @phone [Optional]
| | | | | | @fax [Optional]
| | | | | | street 0-1
| | | | | | city 0-1
| | | | | | subCountry 0-1
| | | | | | country 0-1
| | | | | | postCode 0-1
| | | | | | geoCoordinates 0-1
| | | | | | @um [Optional] [Default= DEGD]
| | | | | | @geoRefSystem [Optional]
| | | | | | | xGeoCoord 1-1
| | | | | | | yGeoCoord 1-1
| | | | | | | zGeoCoord 0-1
| | | | attachment 0-1
| | | | | @uid [Optional]
| | | | | | fileName 0-1
| | | | | | @numberingOrg [Optional]
| | | | | | binaryObject 0-1
| | | | | | @format [Optional]
| | | | | | @mime [Optional]
| | | | | | @encoding [Optional]
| | | | | | @characterSet [Optional]
| | | | | | externalReference 0-99
| | | | | | | uri 1-1
| | | | | | | @isURL [Optional] [Default= true]
| | | | | | | mimeTypeCode 0-1
| | | | | | | formatCode 0-1
| | | | | | | encodingCode 0-1
| | | | | | | characterSetCode 0-1
| | | | | | hashFootprint 0-1
| | | | | | @schemeID [Optional]
| | | | | | @hashMethod [Required]
| | | | | | blockChainReference 0-9
| | | | | | | uri 1-1
| | | | | | | @isURL [Optional] [Default= true]
| | | | | | transactionReceipt 1-9
| | | | note 0-99
| | | | | @numberingOrg [Optional]
| | | | | @codeList [Optional]
| | | | | @noteLabel [Optional]
| | | | validityStart 0-1
| | | | | @dateForm [Optional]
| | | | validityEnd 0-1
| | | | | @dateForm [Optional]
| | | | validityExtensionDate 0-1
| | | | | @dateForm [Optional]
| assessmentStudyDocument 0-9
| | @disclosureLevel [Optional]
| | @docStatusCode [Optional]

```

| @isStudyDataset [Required]

| docID 0-1

| @numberingOrg [Optional]

| docDate 0-1

| @dateForm [Optional]

| **ProductIdentification 0-99**

| uniqueProductID 1-1

| @schemeID [Required]

| objectTypeCode 1-1

| description 0-9

| @ln [Optional]

- choose -

| **rawCode 0-2**

| @numberingOrg [Optional]

| art 1-1

| @numberingOrg [Optional]

| @codeList [Optional]

| @listName [Optional]

| @listVersion [Optional]

| color 0-1

| @numberingOrg [Optional]

| @codeList [Optional]

| @listName [Optional]

| @listVersion [Optional]

| added 0-9

| @numberingOrg [Optional]

| @addType [Optional]

| description 0-unbounded

| @ln [Optional]

- or -

| **yarnCode 0-2**

| @numberingOrg [Optional] [Default= CL]

| art 1-1

| @numberingOrg [Optional]

| @codeList [Optional]

| @listName [Optional]

| @listVersion [Optional]

| color 0-1

| @numberingOrg [Optional]

| @codeList [Optional]

| @listName [Optional]

| @listVersion [Optional]

| added 0-9

| @numberingOrg [Optional]

| @addType [Optional]

| description 0-unbounded

| @ln [Optional]

- or -

| **texCode 0-2**

| @numberingOrg [Optional]

| art 1-1

| @numberingOrg [Optional]

| @codeList [Optional]

| @listName [Optional]

| @listVersion [Optional]

| pattern 0-1

| @numberingOrg [Optional]

| @codeList [Optional]

| @listName [Optional]

| @listVersion [Optional]

| color 0-1

| @numberingOrg [Optional]

| @codeList [Optional]

| @listName [Optional]

| @listVersion [Optional]

| added 0-9

| @numberingOrg [Optional]

| @addType [Optional]

| | | description 0-unbounded
| | | @ln [Optional]

- or -

| | | **acsCode 1-2**

| | | @numberingOrg [Optional]
| | | art 1-1
| | | @numberingOrg [Optional]
| | | @codeList [Optional]
| | | @listName [Optional]
| | | @listVersion [Optional]
| | | pattern 0-1
| | | @numberingOrg [Optional]
| | | @codeList [Optional]
| | | @listName [Optional]
| | | @listVersion [Optional]
| | | color 0-1
| | | @numberingOrg [Optional]
| | | @codeList [Optional]
| | | @listName [Optional]
| | | @listVersion [Optional]
| | | added 0-9
| | | @numberingOrg [Optional]
| | | @addType [Optional]
| | | description 0-unbounded
| | | @ln [Optional]

- or -

| | | **garmentPartCode 0-2**

| | | @numberingOrg [Optional]
| | | gPart 1-1
| | | mod 1-1
| | | @numberingOrg [Optional]
| | | @codeList [Optional]
| | | @listName [Optional]
| | | @listVersion [Optional]
| | | fabric 0-1
| | | @numberingOrg [Optional]
| | | @codeList [Optional]
| | | @listName [Optional]
| | | @listVersion [Optional]
| | | color 0-1
| | | @numberingOrg [Optional]
| | | @codeList [Optional]
| | | @listName [Optional]
| | | @listVersion [Optional]
| | | added 0-19
| | | @numberingOrg [Optional]
| | | @addType [Optional]
| | | size 0-1
| | | @numberingOrg [Optional]
| | | @codeList [Optional]
| | | @listName [Optional]
| | | @listVersion [Optional]
| | | description 0-unbounded
| | | @ln [Optional]

- or -

| | | **garmentCode 0-2**

| | | @numberingOrg [Optional]

- choose -

| | | **garmentCodeB 1-1**

| | | @numberingOrg [Optional]
| | | mod 1-1
| | | @numberingOrg [Optional]
| | | @codeList [Optional]
| | | @listName [Optional]
| | | @listVersion [Optional]
| | | fabric 0-1
| | | @numberingOrg [Optional]
| | | @codeList [Optional]

```

| | | | @listName [Optional]
| | | | @listVersion [Optional]
| | | | color 0-1
| | | | @numberingOrg [Optional]
| | | | @codeList [Optional]
| | | | @listName [Optional]
| | | | @listVersion [Optional]
| | | | garmentVariant 0-9
| | | | | variantType 1-1
| | | | | @numberingOrg [Optional]
| | | | | @codeList [Optional]
| | | | | @listName [Optional]
| | | | | @listVersion [Optional]
| | | | | variantCode 1-1
| | | | | @numberingOrg [Optional]
| | | | | @codeList [Optional]
| | | | | @listName [Optional]
| | | | | @listVersion [Optional]
| | | | drop 0-1
| | | | @numberingOrg [Optional]
| | | | @codeList [Optional]
| | | | @listName [Optional]
| | | | @listVersion [Optional]
| | | | size 0-1
| | | | @numberingOrg [Optional]
| | | | @codeList [Optional]
| | | | @listName [Optional]
| | | | @listVersion [Optional]
| | | | artGroup 0-1
| | | | @numberingOrg [Optional]
| | | | @codeList [Optional]
| | | | @listName [Optional]
| | | | @listVersion [Optional]
| | | | added 0-9
| | | | @numberingOrg [Optional]
| | | | @addType [Optional]
| | | | description 0-unbounded
| | | | @ln [Optional]
| | | | - or -
| | | | garmentCodeA 1-1
| | | | | art 1-1
| | | | | @numberingOrg [Optional]
| | | | | @codeList [Optional]
| | | | | @listName [Optional]
| | | | | @listVersion [Optional]
| | | | | description 0-unbounded
| | | | | @ln [Optional]
| | | | - end choose -
| | | | - end choose -
| | | | note 0-99
| | | | @numberingOrg [Optional]
| | | | @codeList [Optional]
| | | | @noteLabel [Optional]
| | | | year 0-1
| | | | title 0-unbounded
| | | | @ln [Optional]
| | | | description 0-unbounded
| | | | @ln [Optional]
| | | | publishableAbstract 0-99
| | | | @ln [Optional]
| | | | author 0-1
| | | | @email [Optional]
| | | | @phone [Optional]
| | | | @fax [Optional]
| | | | reviewerParty 0-9
| | | | | id 1-1
| | | | | @numberingOrg [Optional]
| | | | | legalName 0-1

```

```

| | dept 0-1
| | subDept 0-1
| | person 0-1
| |   @email [Optional]
| |   @phone [Optional]
| |   @fax [Optional]
| | street 0-1
| | city 0-1
| | subCountry 0-1
| | country 0-1
| | postCode 0-1
| | geoCoordinates 0-1
| |   @um [Optional] [Default= DEGD]
| |   @geoRefSystem [Optional]
| |     | xGeoCoord 1-1
| |     | yGeoCoord 1-1
| |     | zGeoCoord 0-1
| | reviewDate 0-1
| |   @dateForm [Optional]
| | issuerParty 0-1
| |   | id 0-1
| |   |   @numberingOrg [Optional]
| |   | legalName 0-1
| |   | dept 0-1
| |   | subDept 0-1
| |   | person 0-1
| |   |   @email [Optional]
| |   |   @phone [Optional]
| |   |   @fax [Optional]
| |   | street 0-1
| |   | city 0-1
| |   | subCountry 0-1
| |   | country 0-1
| |   | postCode 0-1
| |   | geoCoordinates 0-1
| |   |   @um [Optional] [Default= DEGD]
| |   |   @geoRefSystem [Optional]
| |   |     | xGeoCoord 1-1
| |   |     | yGeoCoord 1-1
| |   |     | zGeoCoord 0-1
| |   | issuerAccreditationInfo 0-1
| | validityStart 0-1
| |   @dateForm [Optional]
| | validityEnd 0-1
| |   @dateForm [Optional]
| | signatureInformation 0-1
| |   signatureTypeCode 1-1
| |   signatoryParty 0-unbounded
| |     | id 0-1
| |     |   @numberingOrg [Optional]
| |     | legalName 0-1
| |     | dept 0-1
| |     | subDept 0-1
| |     | person 0-1
| |     |   @email [Optional]
| |     |   @phone [Optional]
| |     |   @fax [Optional]
| |     | street 0-1
| |     | city 0-1
| |     | subCountry 0-1
| |     | country 0-1
| |     | postCode 0-1
| |     | geoCoordinates 0-1
| |     |   @um [Optional] [Default= DEGD]
| |     |   @geoRefSystem [Optional]
| |     |     | xGeoCoord 1-1
| |     |     | yGeoCoord 1-1
| |     |     | zGeoCoord 0-1

```

```

| | attachment 0-1
| | @uid [Optional]
| | | fileName 0-1
| | | | @numberingOrg [Optional]
| | | binaryObject 0-1
| | | | @format [Optional]
| | | | @mime [Optional]
| | | | @encoding [Optional]
| | | | @characterSet [Optional]
| | | externalReference 0-99
| | | | uri 1-1
| | | | | @isURL [Optional] [Default= true]
| | | | | mimeTypeCode 0-1
| | | | | formatCode 0-1
| | | | | encodingCode 0-1
| | | | | characterSetCode 0-1
| | | | hashFootprint 0-1
| | | | | @schemeID [Optional]
| | | | | @hashMethod [Required]
| | | | blockChainReference 0-9
| | | | | uri 1-1
| | | | | | @isURL [Optional] [Default= true]
| | | | | transactionReceipt 1-9
| | note 0-99
| | | @numberingOrg [Optional]
| | | @codeList [Optional]
| | | @noteLabel [Optional]
|
| note 0-9
| | @numberingOrg [Optional]
| | @codeList [Optional]
| | @noteLabel [Optional]

```

2.2 Detailed description of document elements

Following tables show all elements (complex and simple) used in this document. Description includes: 1) element's information: xml tag, name, brief description, data type and syntax constraints; 2) information about use of the element in a particular position in the document: xpath and possible associated notes.

2.2.1 Complex elements (Aggregate Business Information Entities)

Complex elements are those elements whose content is composed of other elements (childs). Complex elements are alphabetically ordered.

acsCode	<p>full codification identifying an accessory product usually coupled with garment or other fashion product (XPath HPPreliminaryInformation/assessmentStudyDocument/ProductIdentification/acsCode) 1-2 - note: <i>this element can have two instances only if the numbering organisations are different</i> (XPath HPPreliminaryInformation/ProductIdentification/acsCode) 1-2 - note: <i>this element can have two instances only if the numbering organisations are different</i></p>
activityLocation	<p>data relating to a place where activities take places (indicate at least element location or address, city and country) - base type: Nad, (XPath HPPreliminaryInformation/processStepsList/processStep/activityLocation) 0-99 - note: <i>Here filling location, country and subcountry is enough. When the activity is carried out in more than one location, indicate what percentage of the total is carried out at each one</i></p>
assessmentStudyDocument	<p>resulting study document (e.g. an LCA study). It can be related to a component or a product. It can be a dataset (in any format) or a report according to isStudyDataset flag). In the case of PEF study, prefer PEFStudyDocument if possible. - base type: , (XPath HPPreliminaryInformation/assessmentStudyDocument) 0-9 - note: <i>any existing pre-existent useful study</i></p>
attachment	<p>an attached document. An attachment can refer to an external document or be included with the document being exchanged (XPath HPPreliminaryInformation/certificate/attachment) 0-1 - note: <i>indicates where to find the document or contains it as a binary object (the second option is not recommended for practical reasons)</i> (XPath HPPreliminaryInformation/selfAssertion/externalRefDoc/attachment) 0-1 - note: <i>indicates where to find the document or contains it as a binary object (the second option is not recommended for practical reasons)</i> (XPath HPPreliminaryInformation/assessmentStudyDocument/attachment) 0-1 - note: <i>indicates where to find the document or contains it as a binary object (the second option is not recommended for practical reasons)</i></p>
blockChainReference	<p>blockchain reference - base type: string, max length: 80, (XPath HPPreliminaryInformation/selfAssertion/externalRefDoc/attachment/blockChainReference) 0-9 (XPath HPPreliminaryInformation/assessmentStudyDocument/attachment/blockChainReference) 0-9 (XPath HPPreliminaryInformation/certificate/attachment/blockChainReference) 0-9</p>
certificate	<p>Reference and details relating to a document containing a certification issued by a third party who is entitled to issue it - base type: , (XPath HPPreliminaryInformation/certificate) 0-99</p>
certifiedEntity	<p>The entity (organisation, process, product..) for which the certification is valid. - base type: , (XPath HPPreliminaryInformation/certificate/certifiedEntity) 0-unbounded</p>

certifiedParty	<p>identification and details of the party to whom the certificate has been issued</p> <p>- base type: Nad, (XPath HPPreliminaryInformation/certificate/certifiedParty) 1-1</p>
externalRefDoc	<p>external document, used to refer generic office documents (like pdf, docx, xls, for example shop window instructions)</p> <p>- base type: , (XPath HPPreliminaryInformation/selfAssertion/externalRefDoc) 0-99</p> <p>- note: <i>Any type of supporting documentation</i></p>
externalReference	<p>details about an external object, such as a document stored at a remote location</p> <p>(XPath HPPreliminaryInformation/assessmentStudyDocument/attachment/externalReference) 0-99 (XPath HPPreliminaryInformation/certificate/attachment/externalReference) 0-99 (XPath HPPreliminaryInformation/selfAssertion/externalRefDoc/attachment/externalReference) 0-99</p>
garmentCode	<p>codification of the garment product</p> <p>(XPath HPPreliminaryInformation/assessmentStudyDocument/ProductIdentification/garmentCode) 0-2</p> <p>- note: <i>this element can have two instances only if the numbering organisations are different</i> (XPath HPPreliminaryInformation/ProductIdentification/garmentCode) 0-2</p> <p>- note: <i>this element can have two instances only if the numbering organisations are different</i></p>
garmentCodeA	<p>codification of the garment product- type A</p> <p>(XPath HPPreliminaryInformation/ProductIdentification/garmentCode/garmentCodeA) 1-1</p> <p>- note: <i>here the barcode EAN-13 or EAN-8 should be specified</i> (XPath HPPreliminaryInformation/assessmentStudyDocument/ProductIdentification/garmentCode/garmentCodeA) 1-1</p> <p>- note: <i>here the barcode EAN-13 or EAN-8 should be specified</i></p>
garmentCodeB	<p>codification of the garment product - type B</p> <p>(XPath HPPreliminaryInformation/ProductIdentification/garmentCode/garmentCodeB) 1-1 (XPath HPPreliminaryInformation/assessmentStudyDocument/ProductIdentification/garmentCode/garmentCodeB) 1-1</p>
garmentPartCode	<p>codification of the component or part of a fashion article</p> <p>(XPath HPPreliminaryInformation/assessmentStudyDocument/ProductIdentification/garmentPartCode) 0-2</p> <p>- note: <i>this element can have two instances only if the numbering organisations are different</i> (XPath HPPreliminaryInformation/ProductIdentification/garmentPartCode) 0-2</p> <p>- note: <i>this element can have two instances only if the numbering organisations are different</i></p>
garmentVariant	<p>garment product variant</p> <p>(XPath HPPreliminaryInformation/ProductIdentification/garmentCode/garmentCodeB/garmentVariant) 0-9 (XPath HPPreliminaryInformation/assessmentStudyDocument/ProductIdentification/garmentCode/garmentCodeB/garmentVariant) 0-9</p>
geoCoordinates	<p>geographical coordinates</p> <p>(XPath HPPreliminaryInformation/assessmentStudyDocument/signatureInformation/signatoryParty/geoCoordinates) 0-1 (XPath HPPreliminaryInformation/SRVheader/receiverParty/geoCoordinates) 0-1 (XPath HPPreliminaryInformation/selfAssertion/issuerParty/geoCoordinates) 0-1 (XPath HPPreliminaryInformation/certificate/certifiedParty/geoCoordinates) 0-1 (XPath HPPreliminaryInformation/selfAssertion/externalRefDoc/signatureInformation/signatoryParty/geoCoordinates) 0-1 (XPath HPPreliminaryInformation/selfAssertion/externalRefDoc/issuerParty/geoCoordinates) 0-1 (XPath HPPreliminaryInformation/assessmentStudyDocument/issuerParty/geoCoordinates) 0-1 (XPath HPPreliminaryInformation/processStepsList/</p>

	<p>processStep/activityLocation/geoCoordinates) 0-1 (XPath HPPreliminaryInformation/assessmentStudyDocument/ reviewerParty/geoCoordinates) 0-1 (XPath HPPreliminaryInformation/certificate/issuerParty/geoCoordinates) 0-1 (XPath HPPreliminaryInformation/SRVheader/senderParty/geoCoordinates) 0-1</p>
issuerParty	<p>Details of the party that issued the document. - base type: Nad, (XPath HPPreliminaryInformation/certificate/issuerParty) 1-1 (XPath HPPreliminaryInformation/selfAssertion/externalRefDoc/issuerParty) 0-1 (XPath HPPreliminaryInformation/selfAssertion/issuerParty) 1-1 - note: <i>Indicate at least the legalname</i> (XPath HPPreliminaryInformation/assessmentStudyDocument/issuerParty) 0-1</p>
platformServiceReference	<p>service instruction and reference - base type: string, (XPath HPPreliminaryInformation/SRVheader/platformServiceReference) 1-1</p>
processStep	<p>single manufacturing operation needed to produce the product (XPath HPPreliminaryInformation/processStepsList/processStep) 1-unbounded - note: <i>inserting in the correct sequence is recommended</i></p>
processStepsList	<p>List of manufacturing operations required to produce the product (XPath HPPreliminaryInformation/processStepsList) 1-1</p>
productCompos	<p>Quantitative composition of a product (XPath HPPreliminaryInformation/productCompos) 1-1</p>
ProductIdentification	<p>Identifies the product whose transparency and sustainability characteristics are reported (XPath HPPreliminaryInformation/assessmentStudyDocument/ProductIdentification) 0-99 - note: <i>indicate the product(s) to whom this study is related</i> (XPath HPPreliminaryInformation/ProductIdentification) 1-1 - note: <i>indicate object type code</i></p>
rawCode	<p>full codification of a raw material (XPath HPPreliminaryInformation/assessmentStudyDocument/ ProductIdentification/rawCode) 0-2 - note: <i>this element can have two instances only if the numbering organisations are different</i> (XPath HPPreliminaryInformation/ProductIdentification/rawCode) 0-2 - note: <i>this element can have two instances only if the numbering organisations are different</i></p>
receiverParty	<p>Details of the party receiving the document. - base type: Nad, (XPath HPPreliminaryInformation/SRVheader/receiverParty) 1-1</p>
reviewerParty	<p>Details of the party that reviewed the conformance of the adopted methodology. - base type: Nad, (XPath HPPreliminaryInformation/assessmentStudyDocument/reviewerParty) 0-9</p>
selfAssertion	<p>A self declared statement that issuer is able to support with detailed descriptions or documentation. It might comply with standards about assertions (it is the case for example of ISO14021 for environmental assertions). (XPath HPPreliminaryInformation/selfAssertion) 0-99</p>
selfAssertionEntity	<p>The entity (organisation, process, product..) referred by the self assertion - base type: , (XPath HPPreliminaryInformation/selfAssertion/selfAssertionEntity) 0-unbounded</p>
senderParty	<p>Details of the party sending the document. - base type: Nad, (XPath HPPreliminaryInformation/SRVheader/senderParty) 1-1</p>
signatoryParty	<p>Details of the party that signed the document. - base type: Nad, (XPath HPPreliminaryInformation/assessmentStudyDocument/ signatureInformation/signatoryParty) 0-unbounded (XPath HPPreliminaryInformation/selfAssertion/externalRefDoc/signatureInformation/ signatoryParty) 0-unbounded</p>

signatureInformation	information about the document signature (XPath HPPreliminaryInformation/selfAssertion/externalRefDoc/signatureInformation) 0-1 (XPath HPPreliminaryInformation/assessmentStudyDocument/signatureInformation) 0-1
SRVheader	header of documents supporting ePlatform services (XPath HPPreliminaryInformation/SRV/header) 1-1
texCode	full codification of the textile product (XPath HPPreliminaryInformation/assessmentStudyDocument/ProductIdentification/texCode) 0-2 - note: <i>this element can have two instances only if the numbering organisations are different</i> (XPath HPPreliminaryInformation/ProductIdentification/texCode) 0-2 - note: <i>this element can have two instances only if the numbering organisations are different</i>
yarnCode	full codification of a yarn product (XPath HPPreliminaryInformation/assessmentStudyDocument/ProductIdentification/yarnCode) 0-2 - note: <i>this element can have two instances only if the numbering organisations are different</i> (XPath HPPreliminaryInformation/ProductIdentification/yarnCode) 0-2 - note: <i>this element can have two instances only if the numbering organisations are different</i>

2.2.2 Simple elements (Basic Business Information Entities)

Simple elements are those elements whose content is characterized by a data type plus a domain of possible values. Simple elements are alphabetically ordered.

added	additional code of the product (complementing the formers) - base type: string, max length: 80, (XPath HPPreliminaryInformation/ProductIdentification/garmentCode/garmentCodeB/added) 0-9 (XPath HPPreliminaryInformation/assessmentStudyDocument/ProductIdentification/yarnCode/added) 0-9 - note: <i>here an additional codification (see table T44) can be specified</i> (XPath HPPreliminaryInformation/ProductIdentification/rawCode/added) 0-9 (XPath HPPreliminaryInformation/assessmentStudyDocument/ProductIdentification/acsCode/added) 0-9 - note: <i>here an additional codification (see table T44) can be specified</i> (XPath HPPreliminaryInformation/ProductIdentification/acsCode/added) 0-9 - note: <i>here an additional codification (see table T44) can be specified</i> (XPath HPPreliminaryInformation/assessmentStudyDocument/ProductIdentification/rawCode/added) 0-9 (XPath HPPreliminaryInformation/assessmentStudyDocument/ProductIdentification/garmentPartCode/added) 0-19 (XPath HPPreliminaryInformation/ProductIdentification/garmentPartCode/added) 0-19 (XPath HPPreliminaryInformation/assessmentStudyDocument/ProductIdentification/texCode/added) 0-9 - note: <i>here an additional codification (see table T44) can be specified</i> (XPath HPPreliminaryInformation/ProductIdentification/texCode/added) 0-9 - note: <i>here an additional codification (see table T44) can be specified</i> (XPath HPPreliminaryInformation/ProductIdentification/yarnCode/added) 0-9 - note: <i>here an additional codification (see table T44) can be specified</i> (XPath HPPreliminaryInformation/assessmentStudyDocument/ProductIdentification/garmentCode/garmentCodeB/added) 0-9
@addType	qualifier of the additional coding of a product - base type: string, cod. table: T44 http://www.ebiz.enea.it/moda-ml/repository/codelist/draft/gc_T44.xml

	<p>(XPath HPPreliminaryInformation/assessmentStudyDocument/ProductIdentification/garmentCode/garmentCodeB/added/@addType) [Optional]</p> <p>- nota: addType allows the clarification of the meaning of the added element content; it is strongly suggested to use it always.</p> <p>(XPath HPPreliminaryInformation/assessmentStudyDocument/ProductIdentification/garmentPartCode/added/@addType) [Optional]</p> <p>- nota: addType allows the clarification of the meaning of the added element content; it is strongly suggested to use it always.</p> <p>(XPath HPPreliminaryInformation/ProductIdentification/yarnCode/added/@addType) [Optional]</p> <p>- nota: addType allows the clarification of the meaning of the added element content; it is strongly suggested to use it always.</p> <p>(XPath HPPreliminaryInformation/ProductIdentification/texCode/added/@addType) [Optional]</p> <p>- nota: addType allows the clarification of the meaning of the added element content; it is strongly suggested to use it always.</p> <p>(XPath HPPreliminaryInformation/assessmentStudyDocument/ProductIdentification/texCode/added/@addType) [Optional]</p> <p>- nota: addType allows the clarification of the meaning of the added element content; it is strongly suggested to use it always.</p> <p>(XPath HPPreliminaryInformation/ProductIdentification/garmentPartCode/added/@addType) [Optional]</p> <p>- nota: addType allows the clarification of the meaning of the added element content; it is strongly suggested to use it always.</p> <p>(XPath HPPreliminaryInformation/assessmentStudyDocument/ProductIdentification/acsCode/added/@addType) [Optional]</p> <p>- nota: addType allows the clarification of the meaning of the added element content; it is strongly suggested to use it always.</p> <p>(XPath HPPreliminaryInformation/assessmentStudyDocument/ProductIdentification/rawCode/added/@addType) [Optional]</p> <p>- nota: addType allows the clarification of the meaning of the added element content; it is strongly suggested to use it always.</p> <p>(XPath HPPreliminaryInformation/ProductIdentification/acsCode/added/@addType) [Optional]</p> <p>- nota: addType allows the clarification of the meaning of the added element content; it is strongly suggested to use it always.</p> <p>(XPath HPPreliminaryInformation/assessmentStudyDocument/ProductIdentification/yarnCode/added/@addType) [Optional]</p> <p>- nota: addType allows the clarification of the meaning of the added element content; it is strongly suggested to use it always.</p> <p>(XPath HPPreliminaryInformation/ProductIdentification/garmentCode/garmentCodeB/added/@addType) [Optional]</p> <p>- nota: addType allows the clarification of the meaning of the added element content; it is strongly suggested to use it always.</p> <p>(XPath HPPreliminaryInformation/ProductIdentification/rawCode/added/@addType) [Optional]</p> <p>- nota: addType allows the clarification of the meaning of the added element content; it is strongly suggested to use it always.</p>
art	<p>article number of the product</p> <p>- base type: string, max length: 80,</p> <p>(XPath HPPreliminaryInformation/assessmentStudyDocument/ProductIdentification/rawCode/art) 1-1</p> <p>(XPath HPPreliminaryInformation/ProductIdentification/texCode/art) 1-1</p> <p>- note: can be used either for the base-article (excluding pattern/colour) or for the SKU</p> <p>(XPath HPPreliminaryInformation/assessmentStudyDocument/ProductIdentification/acsCode/art) 1-1</p> <p>(XPath HPPreliminaryInformation/assessmentStudyDocument/ProductIdentification/garmentCode/garmentCodeA/art) 1-1</p> <p>(XPath HPPreliminaryInformation/assessmentStudyDocument/ProductIdentification/texCode/art) 1-1</p> <p>- note: can be used either for the base-article (excluding pattern/colour) or for the SKU</p> <p>(XPath HPPreliminaryInformation/ProductIdentification/yarnCode/art) 1-1</p> <p>(XPath HPPreliminaryInformation/ProductIdentification/acsCode/art) 1-1</p> <p>(XPath HPPreliminaryInformation/ProductIdentification/garmentCode/garmentCodeA/art) 1-1</p>

	(XPath HPPreliminaryInformation/ProductIdentification/ rawCode/art) 1-1 (XPath HPPreliminaryInformation/assessmentStudyDocument/ ProductIdentification/yarnCode/art) 1-1
artGroup	code identifying a class of products - base type: string, max length: 40, (XPath HPPreliminaryInformation/assessmentStudyDocument/ ProductIdentification/garmentCode/garmentCodeB/artGroup) 0-1 (XPath HPPreliminaryInformation/ProductIdentification/ garmentCode/garmentCodeB/artGroup) 0-1
assertionCategory	assertion category, indicates the object of the assertion - base type: string, cod. table: NT323 http://www.ebiz.enea.it/moda-ml/repository/codelist/draft/gc_NT323.xml (XPath HPPreliminaryInformation/selfAssertion/assertionCategory) 1-1
author	textual indication of the authors, one or more - base type: string, max length: 40, (XPath HPPreliminaryInformation/assessmentStudyDocument/author) 0-1
binaryObject	a binary large object containing an attached document, Coding 'base64Binary' is recommended. - base type: base64Binary, (XPath HPPreliminaryInformation/assessmentStudyDocument/ attachment/binaryObject) 0-1 (XPath HPPreliminaryInformation/selfAssertion/externalRefDoc/attachment/binaryObject) 0-1 (XPath HPPreliminaryInformation/certificate/attachment/binaryObject) 0-1
certificateID	Identifier of the certificate assigned by the issuer - base type: string, (XPath HPPreliminaryInformation/certificate/certificateID) 1-1
certificationStandardName	it indicates the specification that has been used as normative basis of the certificate. (examples: 'GRS-global recycling standard' or 'Standard 100 OEKO-TEX') - base type: string, (XPath HPPreliminaryInformation/certificate/certificationStandardName) 1-1
@characterSet	the character set of the binary object (examples UTF-8, UTF-16, Windows-1252, ISO-8859-7,..) - base type: normalizedString, (XPath HPPreliminaryInformation/certificate/attachment/ binaryObject/@characterSet) [Optional] (XPath HPPreliminaryInformation/assessmentStudyDocument/ attachment/binaryObject/@characterSet) [Optional] (XPath HPPreliminaryInformation/selfAssertion/externalRefDoc/attachment/binaryObject/ @characterSet) [Optional]
characterSetCode	the character set of an external document (examples UTF-8, UTF-16, Windows-1252, ISO-8859-7,..) - base type: normalizedString, (XPath HPPreliminaryInformation/assessmentStudyDocument/ attachment/externalReference/characterSetCode) 0-1 (XPath HPPreliminaryInformation/certificate/attachment/ externalReference/characterSetCode) 0-1 (XPath HPPreliminaryInformation/selfAssertion/externalRefDoc/attachment/externalReference/ characterSetCode) 0-1
city	name of the city (town, village) - base type: string, max length: 40, (XPath HPPreliminaryInformation/assessmentStudyDocument/ reviewerParty/city) 0-1 (XPath HPPreliminaryInformation/processStepsList/ processStep/activityLocation/city) 0-1 (XPath HPPreliminaryInformation/assessmentStudyDocument/ signatureInformation/signatoryParty/city) 0-1 (XPath HPPreliminaryInformation/assessmentStudyDocument/ issuerParty/city) 0-1

	<p>(XPath HPPreliminaryInformation/selfAssertion/issuerParty/city) 0-1 (XPath HPPreliminaryInformation/SRVheader/senderParty/city) 0-1 (XPath HPPreliminaryInformation/certificate/certifiedParty/city) 0-1 (XPath HPPreliminaryInformation/SRVheader/receiverParty/city) 0-1 (XPath HPPreliminaryInformation/selfAssertion/externalRefDoc/issuerParty/city) 0-1 (XPath HPPreliminaryInformation/selfAssertion/externalRefDoc/signatureInformation/signatoryParty/city) 0-1 (XPath HPPreliminaryInformation/certificate/issuerParty/city) 0-1</p>
@codeList	<p>it specifies the URL where the list of codes used to make an instance of the element can be found</p> <ul style="list-style-type: none"> - base type: string, max length: 255, (XPath HPPreliminaryInformation/ProductIdentification/garmentPartCode/size/@codeList) [Optional] (XPath HPPreliminaryInformation/ProductIdentification/garmentCode/garmentCodeB/garmentVariant/variantType/@codeList) [Optional] - nota: <i>always at least one out of this attribute and "numberingOrg" should be set</i> (XPath HPPreliminaryInformation/ProductIdentification/garmentCode/garmentCodeB/size/@codeList) [Optional] (XPath HPPreliminaryInformation/assessmentStudyDocument/ProductIdentification/garmentCode/garmentCodeA/art/@codeList) [Optional] - nota: <i>at least one out of this attribute and "numberingOrg" should be set</i> (XPath HPPreliminaryInformation/ProductIdentification/garmentCode/garmentCodeB/garmentVariant/variantCode/@codeList) [Optional] - nota: <i>at least one out of this attribute and "numberingOrg" should be set</i> (XPath HPPreliminaryInformation/ProductIdentification/garmentCode/garmentCodeB/drop/@codeList) [Optional] (XPath HPPreliminaryInformation/ProductIdentification/garmentCode/garmentCodeB/artGroup/@codeList) [Optional] - nota: <i>at least one out of this attribute and "numberingOrg" should be set</i> (XPath HPPreliminaryInformation/ProductIdentification/garmentCode/garmentCodeB/mod/@codeList) [Optional] - nota: <i>at least one out of this attribute and "numberingOrg" should be set</i> (XPath HPPreliminaryInformation/assessmentStudyDocument/ProductIdentification/note/@codeList) [Optional] - nota: <i>must be used to provide (URL) the list of codes used in "noteLabel"</i> (XPath HPPreliminaryInformation/ProductIdentification/garmentCode/garmentCodeB/color/@codeList) [Optional] - nota: <i>this attribute should be used either single or coupled with "listName" and "listVersion"</i> (XPath HPPreliminaryInformation/ProductIdentification/garmentCode/garmentCodeB/fabric/@codeList) [Optional] - nota: <i>at least one out of this attribute and "numberingOrg" should be set</i> (XPath HPPreliminaryInformation/assessmentStudyDocument/ProductIdentification/garmentCode/garmentCodeB/artGroup/@codeList) [Optional] - nota: <i>at least one out of this attribute and "numberingOrg" should be set</i> (XPath HPPreliminaryInformation/assessmentStudyDocument/ProductIdentification/acsCode/art/@codeList) [Optional] - nota: <i>at least one out of this attribute and "numberingOrg" should be set</i> (XPath HPPreliminaryInformation/assessmentStudyDocument/ProductIdentification/texCode/color/@codeList) [Optional] - nota: <i>this attribute should be used either single or coupled with "listName" and "listVersion"</i> (XPath HPPreliminaryInformation/assessmentStudyDocument/ProductIdentification/texCode/pattern/@codeList) [Optional] - nota: <i>at least one out of this attribute and "numberingOrg" should be set</i> (XPath HPPreliminaryInformation/assessmentStudyDocument/ProductIdentification/garmentPartCode/mod/@codeList) [Optional] - nota: <i>at least one out of this attribute and "numberingOrg" should be set</i> (XPath HPPreliminaryInformation/assessmentStudyDocument/ProductIdentification/acsCode/color/@codeList) [Optional] - nota: <i>this attribute should be used either single or coupled with "listName" and "listVersion"</i> (XPath HPPreliminaryInformation/assessmentStudyDocument/ProductIdentification/acsCode/pattern/@codeList) [Optional]

- nota: *at least one out of this attribute and "numberingOrg" should be set*
(XPath HPPreliminaryInformation/assessmentStudyDocument/
ProductIdentification/texCode/art/@codeList) [Optional]

- nota: *at least one out of this attribute and "numberingOrg" should be set*
(XPath HPPreliminaryInformation/assessmentStudyDocument/
ProductIdentification/rawCode/color/@codeList) [Optional]

- nota: *this attribute should be used either single or coupled with "listName" and "listVersion"*
(XPath HPPreliminaryInformation/assessmentStudyDocument/
ProductIdentification/rawCode/art/@codeList) [Optional]

- nota: *at least one out of this attribute and "numberingOrg" should be set*
(XPath
HPPreliminaryInformation/selfAssertion/externalRefDoc/note/@codeList) [Optional]

- nota: *must be used to provide (URL) the list of codes used in "noteLabel"*
(XPath HPPreliminaryInformation/certificate/note/@codeList) [Optional]

- nota: *must be used to provide (URL) the list of codes used in "noteLabel"*
(XPath HPPreliminaryInformation/assessmentStudyDocument/
ProductIdentification/yarnCode/color/@codeList) [Optional]

- nota: *this attribute should be used either single or coupled with "listName" and "listVersion"*
(XPath HPPreliminaryInformation/assessmentStudyDocument/
ProductIdentification/yarnCode/art/@codeList) [Optional]

- nota: *at least one out of this attribute and "numberingOrg" should be set*
(XPath HPPreliminaryInformation/assessmentStudyDocument/
ProductIdentification/garmentCode/garmentCodeB/drop/@codeList) [Optional]

(XPath HPPreliminaryInformation/assessmentStudyDocument/
ProductIdentification/garmentCode/garmentCodeB/garmentVariant/variantCode/@codeList) [Optional]

- nota: *at least one out of this attribute and "numberingOrg" should be set*
(XPath HPPreliminaryInformation/assessmentStudyDocument/
ProductIdentification/garmentCode/garmentCodeB/garmentVariant/variantType/@codeList) [Optional]

- nota: *always at least one out of this attribute and "numberingOrg" should be set*
(XPath HPPreliminaryInformation/ProductIdentification/
garmentCode/garmentCodeA/art/@codeList) [Optional]

- nota: *at least one out of this attribute and "numberingOrg" should be set*
(XPath HPPreliminaryInformation/ProductIdentification/
note/@codeList) [Optional]

- nota: *must be used to provide (URL) the list of codes used in "noteLabel"*
(XPath HPPreliminaryInformation/assessmentStudyDocument/
ProductIdentification/garmentCode/garmentCodeB/size/@codeList) [Optional]

(XPath HPPreliminaryInformation/assessmentStudyDocument/
ProductIdentification/garmentCode/garmentCodeB/color/@codeList) [Optional]

- nota: *this attribute should be used either single or coupled with "listName" and "listVersion"*
(XPath HPPreliminaryInformation/processStepsList/
processStep/note/@codeList) [Optional]

- nota: *must be used to provide (URL) the list of codes used in "noteLabel"*
(XPath HPPreliminaryInformation/assessmentStudyDocument/
ProductIdentification/garmentPartCode/color/@codeList) [Optional]

- nota: *this attribute should be used either single or coupled with "listName" and "listVersion"*
(XPath HPPreliminaryInformation/assessmentStudyDocument/
ProductIdentification/garmentPartCode/fabric/@codeList) [Optional]

- nota: *at least one out of this attribute and "numberingOrg" should be set*
(XPath HPPreliminaryInformation/assessmentStudyDocument/
ProductIdentification/garmentCode/garmentCodeB/fabric/@codeList) [Optional]

- nota: *at least one out of this attribute and "numberingOrg" should be set*
(XPath HPPreliminaryInformation/assessmentStudyDocument/
ProductIdentification/garmentCode/garmentCodeB/mod/@codeList) [Optional]

- nota: *at least one out of this attribute and "numberingOrg" should be set*
(XPath HPPreliminaryInformation/assessmentStudyDocument/
ProductIdentification/garmentPartCode/size/@codeList) [Optional]

(XPath HPPreliminaryInformation/ProductIdentification/
texCode/pattern/@codeList) [Optional]

- nota: *at least one out of this attribute and "numberingOrg" should be set*
(XPath HPPreliminaryInformation/ProductIdentification/
texCode/color/@codeList) [Optional]

	<ul style="list-style-type: none"> - nota: <i>this attribute should be used either single or coupled with "listName" and "listVersion"</i> (XPath HPPreliminaryInformation/ProductIdentification/ texCode/art/@codeList) [Optional] - nota: <i>at least one out of this attribute and "numberingOrg" should be set</i> (XPath HPPreliminaryInformation/ProductIdentification/ yarnCode/art/@codeList) [Optional] - nota: <i>at least one out of this attribute and "numberingOrg" should be set</i> (XPath HPPreliminaryInformation/ProductIdentification/ yarnCode/color/@codeList) [Optional] - nota: <i>this attribute should be used either single or coupled with "listName" and "listVersion"</i> (XPath HPPreliminaryInformation/ProductIdentification/ garmentPartCode/mod/@codeList) [Optional] - nota: <i>at least one out of this attribute and "numberingOrg" should be set</i> (XPath HPPreliminaryInformation/ProductIdentification/ garmentPartCode/fabric/@codeList) [Optional] - nota: <i>at least one out of this attribute and "numberingOrg" should be set</i> (XPath HPPreliminaryInformation/ProductIdentification/ acsCode/color/@codeList) [Optional] - nota: <i>this attribute should be used either single or coupled with "listName" and "listVersion"</i> (XPath HPPreliminaryInformation/ProductIdentification/ acsCode/art/@codeList) [Optional] - nota: <i>at least one out of this attribute and "numberingOrg" should be set</i> (XPath HPPreliminaryInformation/ProductIdentification/ acsCode/pattern/@codeList) [Optional] - nota: <i>at least one out of this attribute and "numberingOrg" should be set</i> (XPath HPPreliminaryInformation/ProductIdentification/ rawCode/art/@codeList) [Optional] - nota: <i>at least one out of this attribute and "numberingOrg" should be set</i> (XPath HPPreliminaryInformation/SRVheader/platformServiceReference/platformServiceCode/@codeList) [Optional] - nota: <i>indicate the URL of the platform supplying the service</i> (XPath HPPreliminaryInformation/SRVheader/platformServiceReference/serviceRequestedAction/@codeList) [Optional] - nota: <i>Insert URL codelist of the platform services actions available.</i> (XPath HPPreliminaryInformation/ProductIdentification/ garmentPartCode/color/@codeList) [Optional] - nota: <i>this attribute should be used either single or coupled with "listName" and "listVersion"</i> (XPath HPPreliminaryInformation/note/@codeList) [Optional] - nota: <i>must be used to provide (URL) the list of codes used in "noteLabel"</i> (XPath HPPreliminaryInformation/ProductIdentification/ rawCode/color/@codeList) [Optional] - nota: <i>this attribute should be used either single or coupled with "listName" and "listVersion"</i> (XPath HPPreliminaryInformation/assessmentStudyDocument/ note/@codeList) [Optional] - nota: <i>must be used to provide (URL) the list of codes used in "noteLabel"</i>
color	<p>colour number of the product, when not included in the model or fabric code</p> <ul style="list-style-type: none"> - base type: string, max length: 15, (XPath HPPreliminaryInformation/assessmentStudyDocument/ ProductIdentification/garmentCode/garmentCodeB/color) 0-1 (XPath HPPreliminaryInformation/assessmentStudyDocument/ ProductIdentification/rawCode/color) 0-1 (XPath HPPreliminaryInformation/ProductIdentification/ acsCode/color) 0-1 (XPath HPPreliminaryInformation/assessmentStudyDocument/ ProductIdentification/acsCode/color) 0-1 (XPath HPPreliminaryInformation/ProductIdentification/ yarnCode/color) 0-1 (XPath HPPreliminaryInformation/assessmentStudyDocument/ ProductIdentification/texCode/color) 0-1 (XPath HPPreliminaryInformation/ProductIdentification/ rawCode/color) 0-1 (XPath HPPreliminaryInformation/ProductIdentification/ texCode/color) 0-1

	<p>(XPath HPPreliminaryInformation/assessmentStudyDocument/ProductIdentification/garmentPartCode/color) 0-1</p> <p>- note: <i>when a garment component, it should be the code assigned to the garment article</i></p> <p>(XPath HPPreliminaryInformation/assessmentStudyDocument/ProductIdentification/yarnCode/color) 0-1</p> <p>(XPath HPPreliminaryInformation/ProductIdentification/garmentCode/garmentCodeB/color) 0-1</p> <p>(XPath HPPreliminaryInformation/ProductIdentification/garmentPartCode/color) 0-1</p> <p>- note: <i>when a garment component, it should be the code assigned to the garment article</i></p>
country	<p>code of the nation</p> <p>- base type: string, cod. table: T10</p> <p>http://www.ebiz.enea.it/moda-ml/repository/codelist/draft/gc_T10.xml</p> <p>(XPath HPPreliminaryInformation/certificate/issuerParty/country) 0-1</p> <p>(XPath HPPreliminaryInformation/selfAssertion/issuerParty/country) 0-1</p> <p>(XPath HPPreliminaryInformation/assessmentStudyDocument/issuerParty/country) 0-1</p> <p>(XPath HPPreliminaryInformation/assessmentStudyDocument/reviewerParty/country) 0-1</p> <p>(XPath HPPreliminaryInformation/processStepsList/processStep/activityLocation/country) 0-1</p> <p>(XPath HPPreliminaryInformation/selfAssertion/externalRefDoc/issuerParty/country) 0-1</p> <p>(XPath HPPreliminaryInformation/assessmentStudyDocument/signatureInformation/signatoryParty/country) 0-1</p> <p>(XPath HPPreliminaryInformation/SRVheader/senderParty/country) 0-1</p> <p>(XPath HPPreliminaryInformation/selfAssertion/externalRefDoc/signatureInformation/signatoryParty/country) 0-1</p> <p>(XPath HPPreliminaryInformation/certificate/certifiedParty/country) 0-1</p> <p>(XPath HPPreliminaryInformation/SRVheader/receiverParty/country) 0-1</p>
@dateForm	<p>format used for the date</p> <p>- base type: string, cod. table: NT29</p> <p>http://www.ebiz.enea.it/moda-ml/repository/codelist/draft/gc_NT29.xml</p> <p>(XPath HPPreliminaryInformation/assessmentStudyDocument/docDate/@dateForm) [Optional]</p> <p>(XPath HPPreliminaryInformation/selfAssertion/externalRefDoc/validityStart/@dateForm) [Optional]</p> <p>(XPath HPPreliminaryInformation/selfAssertion/externalRefDoc/validityEnd/@dateForm) [Optional]</p> <p>(XPath HPPreliminaryInformation/assessmentStudyDocument/validityEnd/@dateForm) [Optional]</p> <p>(XPath HPPreliminaryInformation/assessmentStudyDocument/reviewDate/@dateForm) [Optional]</p> <p>(XPath HPPreliminaryInformation/assessmentStudyDocument/validityStart/@dateForm) [Optional]</p> <p>(XPath HPPreliminaryInformation/SRVheader/msgDate/@dateForm) [Optional]</p> <p>(XPath HPPreliminaryInformation/selfAssertion/externalRefDoc/docDate/@dateForm) [Optional]</p> <p>(XPath HPPreliminaryInformation/selfAssertion/validityExtensionDate/@dateForm) [Optional]</p> <p>(XPath HPPreliminaryInformation/certificate/validityStart/@dateForm) [Optional]</p> <p>(XPath HPPreliminaryInformation/selfAssertion/validityEnd/@dateForm) [Optional]</p> <p>(XPath HPPreliminaryInformation/certificate/docDate/@dateForm) [Optional]</p> <p>(XPath HPPreliminaryInformation/selfAssertion/validityStart/@dateForm) [Optional]</p> <p>(XPath HPPreliminaryInformation/certificate/validityExtensionDate/@dateForm) [Optional]</p> <p>(XPath HPPreliminaryInformation/certificate/validityEnd/@dateForm) [Optional]</p>
dept	name or code of a department

	<ul style="list-style-type: none"> - base type: string, max length: 40, (XPath HPPreliminaryInformation/assessmentStudyDocument/ reviewerParty/dept) 0-1 (XPath HPPreliminaryInformation/SRVheader/receiverParty/dept) 0-1 (XPath HPPreliminaryInformation/assessmentStudyDocument/ signatureInformation/signatoryParty/dept) 0-1 (XPath HPPreliminaryInformation/selfAssertion/externalRefDoc/issuerParty/dept) 0-1 (XPath HPPreliminaryInformation/selfAssertion/externalRefDoc/signatureInformation/si gnatoryParty/dept) 0-1 (XPath HPPreliminaryInformation/selfAssertion/issuerParty/dept) 0-1 (XPath HPPreliminaryInformation/SRVheader/senderParty/dept) 0-1 (XPath HPPreliminaryInformation/processStepsList/ processStep/activityLocation/dept) 0-1 (XPath HPPreliminaryInformation/certificate/issuerParty/dept) 0-1 (XPath HPPreliminaryInformation/assessmentStudyDocument/ issuerParty/dept) 0-1 (XPath HPPreliminaryInformation/certificate/certifiedParty/dept) 0-1
description	<p>free text description. The content of the element must be unique, it might be translated and repeated into more languages (thus no more than one instance for each language).</p> <ul style="list-style-type: none"> - base type: string, max length: 250, (XPath HPPreliminaryInformation/ProductIdentification/ rawCode/description) 0-unbounded - note: <i>Raw material description</i> (XPath HPPreliminaryInformation/ProductIdentification/ texCode/description) 0-unbounded - note: <i>Product description</i> (XPath HPPreliminaryInformation/assessmentStudyDocument/ ProductIdentification/yarnCode/description) 0-unbounded - note: <i>Product description</i> (XPath HPPreliminaryInformation/assessmentStudyDocument/ ProductIdentification/garmentPartCode/description) 0-unbounded - note: <i>Product part description</i> (XPath HPPreliminaryInformation/assessmentStudyDocument/ ProductIdentification/acsCode/description) 0-unbounded - note: <i>Product description</i> (XPath HPPreliminaryInformation/certificate/description) 0-unbounded - note: <i>Only one instance of this element for each different value of 'In' attribute (language)</i> (XPath HPPreliminaryInformation/processStepsList/ processStep/description) 0-9 - note: <i>Only one instance of this element for each different value of 'In' attribute (language)</i> (XPath HPPreliminaryInformation/ProductIdentification/ yarnCode/description) 0-unbounded - note: <i>Product description</i> (XPath HPPreliminaryInformation/certificate/certifiedEntity/description) 0-9 - note: <i>Name or short textual description of the entity. Only one instance of this element for each different value of 'In' attribute (language)</i> (XPath HPPreliminaryInformation/assessmentStudyDocument/description) 0-unbounded - note: <i>Only one instance of this element for each different value of 'In' attribute (language)</i> (XPath HPPreliminaryInformation/assessmentStudyDocument/ ProductIdentification/texCode/description) 0-unbounded - note: <i>Product description</i> (XPath HPPreliminaryInformation/selfAssertion/selfAssertionEntity/description) 0-9 - note: <i>Name or short textual description of the entity. Only one instance of this element for each different value of 'In' attribute (language)</i> (XPath HPPreliminaryInformation/selfAssertion/externalRefDoc/description) 0-unbounded - note: <i>Only one instance of this element for each different value of 'In' attribute (language)</i> (XPath HPPreliminaryInformation/ProductIdentification/ garmentCode/garmentCodeA/description) 0-unbounded

	<p>- note: <i>Product description</i> (XPath HPPreliminaryInformation/assessmentStudyDocument/ProductIdentification/rawCode/description) 0-unbounded</p> <p>- note: <i>Raw material description</i> (XPath HPPreliminaryInformation/ProductIdentification/garmentCode/garmentCodeB/description) 0-unbounded</p> <p>- note: <i>Product description</i> (XPath HPPreliminaryInformation/assessmentStudyDocument/ProductIdentification/garmentCode/garmentCodeB/description) 0-unbounded</p> <p>- note: <i>Product description</i> (XPath HPPreliminaryInformation/assessmentStudyDocument/ProductIdentification/garmentCode/garmentCodeA/description) 0-unbounded</p> <p>- note: <i>Product description</i> (XPath HPPreliminaryInformation/ProductIdentification/acsCode/description) 0-unbounded</p> <p>- note: <i>Product description</i> (XPath HPPreliminaryInformation/assessmentStudyDocument/ProductIdentification/description) 0-9</p> <p>- note: <i>Only one instance of this element for each different value of 'In' attribute (language)</i> (XPath HPPreliminaryInformation/ProductIdentification/description) 0-9</p> <p>- note: <i>Only one instance of this element for each different value of 'In' attribute (language)</i> (XPath HPPreliminaryInformation/ProductIdentification/garmentPartCode/description) 0-unbounded</p> <p>- note: <i>Product part description</i> (XPath HPPreliminaryInformation/selfAssertion/description) 1-99</p> <p>- note: <i>in case insert here reference to existing standard/certification or assertion standards, like ISO14021.</i> Only one instance of this element for each different value of 'In' attribute (language)</p>
@disclosureLevel	<p>indicates the level of disclosure permitted for the information it is associated with</p> <p>- base type: decimal, cod. table: NT311 http://www.ebiz.enea.it/moda-ml/repository/codelist/draft/gc_NT311.xml (XPath HPPreliminaryInformation/processStepsList/@disclosureLevel) [Required] (XPath HPPreliminaryInformation/selfAssertion/@disclosureLevel) [Optional] (XPath HPPreliminaryInformation/assessmentStudyDocument/@disclosureLevel) [Optional]</p>
docDate	<p>date of issue of the referenced document, according to one of the patterns YYYY-MM-DD, YYYY-MM-DD:HH-MM or YYYY-WW.</p> <p>- base type: string, (XPath HPPreliminaryInformation/assessmentStudyDocument/docDate) 0-1 (XPath HPPreliminaryInformation/certificate/docDate) 1-1 (XPath HPPreliminaryInformation/selfAssertion/externalRefDoc/docDate) 0-1</p>
docID	<p>identification number of the referenced document</p> <p>- base type: string, max length: 80, (XPath HPPreliminaryInformation/certificate/docID) 1-1</p> <p>- note: <i>reference to the internal certificate to the systems of the participants in the supply chain</i> (XPath HPPreliminaryInformation/assessmentStudyDocument/docID) 0-1 (XPath HPPreliminaryInformation/selfAssertion/externalRefDoc/docID) 1-1</p>
@docStatusCode	<p>current status of the document</p> <p>- base type: decimal, cod. table: NT313 http://www.ebiz.enea.it/moda-ml/repository/codelist/draft/gc_NT313.xml (XPath HPPreliminaryInformation/assessmentStudyDocument/@docStatusCode) [Optional] (XPath HPPreliminaryInformation/certificate/@docStatusCode) [Required] (XPath HPPreliminaryInformation/selfAssertion/@docStatusCode) [Optional]</p>
documentType	<p>type or class to which the document belongs</p> <p>- base type: string, cod. table: T21 http://www.ebiz.enea.it/moda-ml/repository/codelist/draft/gc_T21.xml (XPath HPPreliminaryInformation/selfAssertion/externalRefDoc/documentType) 0-1</p>
@docValidity	<p>document current validity indicator</p> <p>- base type: boolean, (XPath HPPreliminaryInformation/certificate/@docValidity) [Required]</p>

drop	<p>drop number of the garment</p> <p>- base type: string, max length: 15, (XPath HPPreliminaryInformation/ProductIdentification/ garmentCode/garmentCodeB/drop) 0-1</p> <p>- note: <i>Fill this element if the drop is the same for all the sizes of the model. Otherway specify it within the csRange element</i> (XPath HPPreliminaryInformation/assessmentStudyDocument/ ProductIdentification/garmentCode/garmentCodeB/drop) 0-1</p> <p>- note: <i>Fill this element if the drop is the same for all the sizes of the model. Otherway specify it within the csRange element</i></p>
@email	<p>electronic mail address of the contact person within a Party</p> <p>- base type: string, max length: 250, (XPath HPPreliminaryInformation/selfAssertion/issuerParty/ person/@email) [Optional]</p> <p>(XPath HPPreliminaryInformation/assessmentStudyDocument/ signatureInformation/signatoryParty/person/@email) [Optional]</p> <p>(XPath HPPreliminaryInformation/certificate/issuerParty/ person/@email) [Optional]</p> <p>(XPath HPPreliminaryInformation/assessmentStudyDocument/ author/@email) [Optional]</p> <p>(XPath HPPreliminaryInformation/SRVheader/senderParty/ person/@email) [Optional]</p> <p>(XPath HPPreliminaryInformation/selfAssertion/externalRefDoc/signatureInformation/si gnatoryParty/person/@email) [Optional]</p> <p>(XPath HPPreliminaryInformation/selfAssertion/externalRefDoc/issuerParty/person/@ email) [Optional]</p> <p>(XPath HPPreliminaryInformation/certificate/certifiedParty/person/@email) [Optional]</p> <p>(XPath HPPreliminaryInformation/SRVheader/receiverParty/ person/@email) [Optional]</p> <p>(XPath HPPreliminaryInformation/assessmentStudyDocument/ issuerParty/person/@email) [Optional]</p> <p>(XPath HPPreliminaryInformation/assessmentStudyDocument/ reviewerParty/person/@email) [Optional]</p> <p>(XPath HPPreliminaryInformation/processStepsList/ processStep/activityLocation/person/@email) [Optional]</p>
@encoding	<p>specifies the decoding algorithm of the binary object</p> <p>- base type: normalizedString, (XPath HPPreliminaryInformation/selfAssertion/externalRefDoc/attachment/binaryObjec t/@encoding) [Optional]</p> <p>(XPath HPPreliminaryInformation/assessmentStudyDocument/ attachment/binaryObject/@encoding) [Optional]</p> <p>(XPath HPPreliminaryInformation/certificate/attachment/ binaryObject/@encoding) [Optional]</p>
encodingCode	<p>the encoding/decoding algorithm used with the external object (example is 'base64Binary')</p> <p>- base type: normalizedString, (XPath HPPreliminaryInformation/assessmentStudyDocument/ attachment/externalReference/encodingCode) 0-1</p> <p>(XPath HPPreliminaryInformation/selfAssertion/externalRefDoc/attachment/externalRe ference/encodingCode) 0-1</p> <p>(XPath HPPreliminaryInformation/certificate/attachment/ externalReference/encodingCode) 0-1</p>
entityID	<p>unique identification number assigned to an entity.</p> <p>- base type: string, (XPath HPPreliminaryInformation/selfAssertion/selfAssertionEntity/entityID) 1-3</p> <p>- note: <i>Identifier of the entity. More values are allowed as long as they refer to the same entity according to different identification schemes (different schemeID value)</i> (XPath HPPreliminaryInformation/certificate/certifiedEntity/entityID) 1-3</p> <p>- note: <i>Identifier of the entity. More values are allowed as long as they refer to the same entity according to different identification schemes (different schemeID value)</i></p>

entityTypeCode	<p>code that indicates the type of entity to which we refer</p> <p>- base type: string, cod. table: NT201 http://www.ebiz.enea.it/moda-ml/repository/codelist/draft/gc_NT201.xml (XPath HPPreliminaryInformation/certificate/certifiedEntity/entityTypeCode) 1-1 (XPath HPPreliminaryInformation/selfAssertion/selfAssertionEntity/entityTypeCode) 1-1</p>
@exhaustiveInformation	<p>indicates that the provided information is guaranteed as exhaustive (all the information are mentioned – with the only limitations due to the access rights-) or non-exhaustive (the list contains just some elements): value true=exhaustive</p> <p>- base type: boolean, (XPath HPPreliminaryInformation/processStepsList/@exhaustiveInformation) [Required]</p> <p>- nota: <i>When TRUE the sender guarantees as exhaustive the supplied information (all the information are explicated – with the only limitations due to the access rights-) When FALSE, non-exhaustive (the list contains only some foreseen elements).</i></p>
fabric	<p>fabric number of the garment</p> <p>- base type: string, max length: 15, (XPath HPPreliminaryInformation/assessmentStudyDocument/ProductIdentification/garmentCode/garmentCodeB/fabric) 0-1 (XPath HPPreliminaryInformation/assessmentStudyDocument/ProductIdentification/garmentPartCode/fabric) 0-1</p> <p>- note: <i>when a garment component, it should be the code assigned to the garment article</i> (XPath HPPreliminaryInformation/ProductIdentification/garmentPartCode/fabric) 0-1</p> <p>- note: <i>when a garment component, it should be the code assigned to the garment article</i> (XPath HPPreliminaryInformation/ProductIdentification/garmentCode/garmentCodeB/fabric) 0-1</p>
@fax	<p>fax number of the contact person within a Party</p> <p>- base type: string, max length: 35, (XPath HPPreliminaryInformation/certificate/certifiedParty/person/@fax) [Optional] (XPath HPPreliminaryInformation/processStepsList/processStep/activityLocation/person/@fax) [Optional] (XPath HPPreliminaryInformation/certificate/issuerParty/person/@fax) [Optional] (XPath HPPreliminaryInformation/assessmentStudyDocument/author/@fax) [Optional] (XPath HPPreliminaryInformation/selfAssertion/externalRefDoc/signatureInformation/signatoryParty/person/@fax) [Optional] (XPath HPPreliminaryInformation/selfAssertion/issuerParty/person/@fax) [Optional] (XPath HPPreliminaryInformation/selfAssertion/externalRefDoc/issuerParty/person/@fax) [Optional] (XPath HPPreliminaryInformation/assessmentStudyDocument/issuerParty/person/@fax) [Optional] (XPath HPPreliminaryInformation/SRVheader/senderParty/person/@fax) [Optional] (XPath HPPreliminaryInformation/assessmentStudyDocument/reviewerParty/person/@fax) [Optional] (XPath HPPreliminaryInformation/assessmentStudyDocument/signatureInformation/signatoryParty/person/@fax) [Optional] (XPath HPPreliminaryInformation/SRVheader/receiverParty/person/@fax) [Optional]</p>
@fibre	<p>type of fibre used in a textile product</p> <p>- base type: string, cod. table: T19 http://www.ebiz.enea.it/moda-ml/repository/codelist/draft/gc_T19.xml (XPath HPPreliminaryInformation/productCompos/percCompos/@fibre) [Required]</p>
fileName	<p>unique identifier (name) of the file</p> <p>- base type: string, max length: 255, (XPath HPPreliminaryInformation/certificate/attachment/fileName) 0-1 (XPath HPPreliminaryInformation/assessmentStudyDocument/attachment/fileName) 0-1</p>

	(XPath HPPreliminaryInformation/selfAssertion/externalRefDoc/attachment/fileName) 0-1
@format	the format of the binary content (examples xml, pdf, doc,...) - base type: string, (XPath HPPreliminaryInformation/selfAssertion/externalRefDoc/attachment/binaryObject/@format) [Optional] (XPath HPPreliminaryInformation/certificate/attachment/binaryObject/@format) [Optional] (XPath HPPreliminaryInformation/assessmentStudyDocument/attachment/binaryObject/@format) [Optional]
formatCode	the format of the external object (examples xml, pdf, doc,...) - base type: normalizedString, (XPath HPPreliminaryInformation/selfAssertion/externalRefDoc/attachment/externalReference/formatCode) 0-1 (XPath HPPreliminaryInformation/assessmentStudyDocument/attachment/externalReference/formatCode) 0-1 (XPath HPPreliminaryInformation/certificate/attachment/externalReference/formatCode) 0-1
@geoRefSystem	georeference system adopted for the coordinate (in example wgs84 with decimal degree o degree with minute and seconds) - base type: string, (XPath HPPreliminaryInformation/assessmentStudyDocument/signatureInformation/signatoryParty/geoCoordinates/@geoRefSystem) [Optional] (XPath HPPreliminaryInformation/selfAssertion/externalRefDoc/signatureInformation/signatoryParty/geoCoordinates/@geoRefSystem) [Optional] (XPath HPPreliminaryInformation/selfAssertion/issuerParty/geoCoordinates/@geoRefSystem) [Optional] (XPath HPPreliminaryInformation/SRVheader/senderParty/geoCoordinates/@geoRefSystem) [Optional] (XPath HPPreliminaryInformation/SRVheader/receiverParty/geoCoordinates/@geoRefSystem) [Optional] (XPath HPPreliminaryInformation/selfAssertion/externalRefDoc/issuerParty/geoCoordinates/@geoRefSystem) [Optional] (XPath HPPreliminaryInformation/certificate/certifiedParty/geoCoordinates/@geoRefSystem) [Optional] (XPath HPPreliminaryInformation/assessmentStudyDocument/reviewerParty/geoCoordinates/@geoRefSystem) [Optional] (XPath HPPreliminaryInformation/processStepsList/processStep/activityLocation/geoCoordinates/@geoRefSystem) [Optional] (XPath HPPreliminaryInformation/certificate/issuerParty/geoCoordinates/@geoRefSystem) [Optional] (XPath HPPreliminaryInformation/assessmentStudyDocument/issuerParty/geoCoordinates/@geoRefSystem) [Optional]
gPart	code specifying the type of component or part of a fashion product (sleeve, neck, ...) - base type: string, cod. table: T48 http://www.ebiz.enea.it/moda-ml/repository/codelist/draft/gc_T48.xml (XPath HPPreliminaryInformation/ProductIdentification/garmentPartCode/gPart) 1-1 (XPath HPPreliminaryInformation/assessmentStudyDocument/ProductIdentification/garmentPartCode/gPart) 1-1
hashFootprint	footprint obtained by applying an hashing algorithm - base type: string, max length: 80, (XPath HPPreliminaryInformation/certificate/attachment/hashFootprint) 0-1 (XPath HPPreliminaryInformation/selfAssertion/externalRefDoc/attachment/hashFootprint) 0-1 (XPath HPPreliminaryInformation/assessmentStudyDocument/attachment/hashFootprint) 0-1
@hashMethod	type of used hashing algorithm

	<p>- base type: string, max length: 80, cod. table: NT333 http://www.ebiz.enea.it/moda-ml/repository/codelist/draft/gc_NT333.xml (XPath HPPreliminaryInformation/selfAssertion/externalRefDoc/attachment/hashFootprint/@hashMethod) [Required] (XPath HPPreliminaryInformation/certificate/attachment/ hashFootprint/@hashMethod) [Required] (XPath HPPreliminaryInformation/assessmentStudyDocument/ attachment/hashFootprint/@hashMethod) [Required]</p>
id	<p>primary identification code of a Party; it is recommended to use an EORI number (with @numberingOrg= "EO") or the format: nation code (ISO 3166) + national tax code (i.e. VAT identification number) with @numberingOrg= "MF" - base type: string, max length: 15, (XPath HPPreliminaryInformation/SRV/header/receiverParty/id) 1-1 (XPath HPPreliminaryInformation/assessmentStudyDocument/ signatureInformation/signatoryParty/id) 0-1 (XPath HPPreliminaryInformation/certificate/certifiedParty/id) 0-1 (XPath HPPreliminaryInformation/selfAssertion/issuerParty/id) 0-1 (XPath HPPreliminaryInformation/SRV/header/senderParty/id) 1-1 (XPath HPPreliminaryInformation/certificate/issuerParty/id) 0-1 (XPath HPPreliminaryInformation/selfAssertion/externalRefDoc/signatureInformation/signatoryParty/id) 0-1 (XPath HPPreliminaryInformation/assessmentStudyDocument/ issuerParty/id) 0-1 (XPath HPPreliminaryInformation/selfAssertion/externalRefDoc/issuerParty/id) 0-1 (XPath HPPreliminaryInformation/assessmentStudyDocument/ reviewerParty/id) 1-1</p>
@internallyPerformed	<p>indicates that the operation is carried out internally (value TRUE) of the organization and not at a subcontractor or other subject (value FALSE) - base type: boolean, (XPath HPPreliminaryInformation/processStepsList/ processStep/@internallyPerformed) [Optional]</p>
@isStudyDataset	<p>if 'true' the element to which it is associated is the dataset of a study to be treated as a binary dataset, otherwise it is a report - base type: boolean, (XPath HPPreliminaryInformation/assessmentStudyDocument/@isStudyDataset) [Required]</p>
issuerAccreditationInfo	<p>accrediting information of the issuer of the document - base type: string, (XPath HPPreliminaryInformation/assessmentStudyDocument/ issuerParty/issuerAccreditationInfo) 0-1 (XPath HPPreliminaryInformation/selfAssertion/externalRefDoc/issuerParty/issuerAccreditationInfo) 0-1 (XPath HPPreliminaryInformation/certificate/issuerParty/issuerAccreditationInfo) 0-1 (XPath HPPreliminaryInformation/selfAssertion/issuerParty/issuerAccreditationInfo) 0-1</p>
@isURL	<p>it indicates if the referred element is an URL (true) or not (false) - base type: boolean, (XPath HPPreliminaryInformation/certificate/attachment/ externalReference/uri/@isURL) [Optional] [Default= true] - nota: <i>usage of URLs is recommended</i> (XPath HPPreliminaryInformation/assessmentStudyDocument/ attachment/blockChainReference/uri/@isURL) [Optional] [Default= true] - nota: <i>usage of URLs is recommended</i> (XPath HPPreliminaryInformation/selfAssertion/externalRefDoc/attachment/blockChainReference/uri/@isURL) [Optional] [Default= true] - nota: <i>usage of URLs is recommended</i> (XPath HPPreliminaryInformation/certificate/attachment/ blockChainReference/uri/@isURL) [Optional] [Default= true] - nota: <i>usage of URLs is recommended</i> (XPath HPPreliminaryInformation/assessmentStudyDocument/ attachment/externalReference/uri/@isURL) [Optional] [Default= true] - nota: <i>usage of URLs is recommended</i> (XPath</p>

	<p>HPPreliminaryInformation/selfAssertion/externalRefDoc/attachment/externalReference/uri/@isURL) [Optional] [Default= true] - nota: usage of URLs is recommended</p>
legalName	<p>legal name - base type: string, max length: 250, (XPath HPPreliminaryInformation/selfAssertion/externalRefDoc/signatureInformation/signatoryParty/legalName) 0-1 (XPath HPPreliminaryInformation/assessmentStudyDocument/signatureInformation/signatoryParty/legalName) 0-1 (XPath HPPreliminaryInformation/SRVheader/receiverParty/legalName) 0-1 (XPath HPPreliminaryInformation/assessmentStudyDocument/reviewerParty/legalName) 0-1 (XPath HPPreliminaryInformation/certificate/certifiedParty/legalName) 0-1 (XPath HPPreliminaryInformation/assessmentStudyDocument/issuerParty/legalName) 0-1 (XPath HPPreliminaryInformation/SRVheader/senderParty/legalName) 0-1 (XPath HPPreliminaryInformation/processStepsList/processStep/activityLocation/legalName) 0-1 (XPath HPPreliminaryInformation/certificate/issuerParty/legalName) 0-1 (XPath HPPreliminaryInformation/selfAssertion/externalRefDoc/issuerParty/legalName) 0-1 (XPath HPPreliminaryInformation/selfAssertion/issuerParty/legalName) 0-1</p>
@limitedByDisclosureIndicator	<p>indicates whether the content has been restricted by the enforcement of accessibility rights (i.e. it may not be complete): true = restricted, false = not restricted - base type: boolean, (XPath HPPreliminaryInformation/processStepsList/@limitedByDisclosureIndicator) [Optional] - nota: use when you want to indicate that the content provided is only a part of what is actually stored</p>
@listName	<p>the name of the list of codes used to make an instance of the element (it might be thought as descriptive element, i.e. 'fabric printing technologies', or not, i.e. "T264") - base type: string, max length: 40, (XPath HPPreliminaryInformation/assessmentStudyDocument/ProductIdentification/garmentCode/garmentCodeB/size/@listName) [Optional] - nota: this attribute should always be used coupled with "numberingOrg" (XPath HPPreliminaryInformation/ProductIdentification/garmentPartCode/size/@listName) [Optional] - nota: this attribute should always be used coupled with "numberingOrg" (XPath HPPreliminaryInformation/ProductIdentification/garmentCode/garmentCodeA/art/@listName) [Optional] - nota: this attribute should always be used coupled with "numberingOrg" (XPath HPPreliminaryInformation/assessmentStudyDocument/ProductIdentification/yarnCode/art/@listName) [Optional] - nota: this attribute should always be used coupled with "numberingOrg" (XPath HPPreliminaryInformation/assessmentStudyDocument/ProductIdentification/rawCode/color/@listName) [Optional] - nota: this attribute should always be used coupled with "numberingOrg" (XPath HPPreliminaryInformation/ProductIdentification/garmentPartCode/mod/@listName) [Optional] - nota: this attribute should always be used coupled with "numberingOrg" (XPath HPPreliminaryInformation/ProductIdentification/garmentCode/garmentCodeB/color/@listName) [Optional] - nota: this attribute should always be used coupled with "numberingOrg" (XPath HPPreliminaryInformation/ProductIdentification/garmentCode/garmentCodeB/drop/@listName) [Optional] - nota: this attribute should always be used coupled with "numberingOrg" (XPath HPPreliminaryInformation/assessmentStudyDocument/ProductIdentification/garmentCode/garmentCodeA/art/@listName) [Optional] - nota: this attribute should always be used coupled with "numberingOrg" (XPath HPPreliminaryInformation/ProductIdentification/garmentCode/garmentCodeB/garmentVariant/variantType/@listName) [Optional] - nota: this attribute should always be used coupled with "numberingOrg" (XPath HPPreliminaryInformation/ProductIdentification/garmentCode/garmentCodeB/garmentVariant/variantCode/@listName) [Optional]</p>

	<p>(XPath HPPreliminaryInformation/assessmentStudyDocument/ProductIdentification/acsCode/art/@listName) [Optional] - nota: <i>this attribute should always be used coupled with “numberingOrg”</i> (XPath HPPreliminaryInformation/assessmentStudyDocument/ProductIdentification/texCode/color/@listName) [Optional] - nota: <i>this attribute should always be used coupled with “numberingOrg”</i> (XPath HPPreliminaryInformation/ProductIdentification/rawCode/color/@listName) [Optional] - nota: <i>this attribute should always be used coupled with “numberingOrg”</i> (XPath HPPreliminaryInformation/assessmentStudyDocument/ProductIdentification/garmentCode/garmentCodeB/drop/@listName) [Optional] - nota: <i>this attribute should always be used coupled with “numberingOrg”</i> (XPath HPPreliminaryInformation/assessmentStudyDocument/ProductIdentification/garmentPartCode/fabric/@listName) [Optional] - nota: <i>this attribute should always be used coupled with “numberingOrg”</i> (XPath HPPreliminaryInformation/assessmentStudyDocument/ProductIdentification/garmentCode/garmentCodeB/mod/@listName) [Optional] - nota: <i>this attribute should always be used coupled with “numberingOrg”</i> (XPath HPPreliminaryInformation/ProductIdentification/acsCode/pattern/@listName) [Optional] - nota: <i>this attribute should always be used coupled with “numberingOrg”</i> (XPath HPPreliminaryInformation/assessmentStudyDocument/ProductIdentification/garmentPartCode/mod/@listName) [Optional] - nota: <i>this attribute should always be used coupled with “numberingOrg”</i> (XPath HPPreliminaryInformation/ProductIdentification/texCode/pattern/@listName) [Optional] - nota: <i>this attribute should always be used coupled with “numberingOrg”</i> (XPath HPPreliminaryInformation/assessmentStudyDocument/ProductIdentification/yarnCode/color/@listName) [Optional] - nota: <i>this attribute should always be used coupled with “numberingOrg”</i> (XPath HPPreliminaryInformation/ProductIdentification/rawCode/art/@listName) [Optional] - nota: <i>this attribute should always be used coupled with “numberingOrg”</i> (XPath HPPreliminaryInformation/assessmentStudyDocument/ProductIdentification/garmentCode/garmentCodeB/fabric/@listName) [Optional]] - nota: <i>this attribute should always be used coupled with “numberingOrg”</i> (XPath HPPreliminaryInformation/ProductIdentification/texCode/color/@listName) [Optional] - nota: <i>this attribute should always be used coupled with “numberingOrg”</i></p>
@listVersion	<p>it specifies the version of the list of codes used to make an instance of the element - base type: string, max length: 6, (XPath HPPreliminaryInformation/ProductIdentification/garmentCode/garmentCodeB/drop/@listVersion) [Optional] - nota: <i>this attribute should always be used coupled with “numberingOrg” and “listName”</i> (XPath HPPreliminaryInformation/ProductIdentification/garmentCode/garmentCodeB/garmentVariant/variantType/@listVersion) [Optional] - nota: <i>this attribute should always be used coupled with “numberingOrg” and “listName”</i> (XPath HPPreliminaryInformation/assessmentStudyDocument/ProductIdentification/garmentCode/garmentCodeB/color/@listVersion) [Optional] - nota: <i>this attribute should always be used coupled with “numberingOrg” and “listName”</i> (XPath HPPreliminaryInformation/assessmentStudyDocument/ProductIdentification/garmentPartCode/fabric/@listVersion) [Optional] - nota: <i>this attribute should always be used coupled with “numberingOrg” and “listName”</i> (XPath HPPreliminaryInformation/ProductIdentification/texCode/pattern/@listVersion) [Optional] - nota: <i>this attribute should always be used coupled with “numberingOrg” and “listName”</i> (XPath HPPreliminaryInformation/assessmentStudyDocument/ProductIdentification/acsCode/art/@listVersion) [Optional] - nota: <i>this attribute should always be used coupled with “numberingOrg” and “listName”</i> (XPath HPPreliminaryInformation/ProductIdentification/</p>

	<p>garmentPartCode/mod/@listVersion) [Optional]</p> <p>- nota: <i>this attribute should always be used coupled with “numberingOrg” and “listName”</i></p> <p>(XPath HPPreliminaryInformation/ProductIdentification/ garmentCode/garmentCodeB/mod/@listVersion) [Optional]</p> <p>- nota: <i>this attribute should always be used coupled with “numberingOrg” and “listName”</i></p> <p>(XPath HPPreliminaryInformation/ProductIdentification/ texCode/art/@listVersion) [Optional]</p> <p>- nota: <i>this attribute should always be used coupled with “numberingOrg” and “listName”</i></p> <p>(XPath HPPreliminaryInformation/assessmentStudyDocument/ ProductIdentification/garmentCode/garmentCodeB/fabric/@listVersion) [Optional]</p> <p>- nota: <i>this attribute should always be used coupled with “numberingOrg” and “listName”</i></p> <p>(XPath HPPreliminaryInformation/ProductIdentification/ garmentPartCode/color/@listVersion) [Optional]</p> <p>- nota: <i>this attribute should always be used coupled with “numberingOrg” and “listName”</i></p> <p>(XPath HPPreliminaryInformation/assessmentStudyDocument/ ProductIdentification/garmentCode/garmentCodeB/mod/@listVersion) [Optional]</p> <p>- nota: <i>this attribute should always be used coupled with “numberingOrg” and “listName”</i></p> <p>(XPath HPPreliminaryInformation/assessmentStudyDocument/ ProductIdentification/acsCode/pattern/@listVersion) [Optional]</p> <p>- nota: <i>this attribute should always be used coupled with “numberingOrg” and “listName”</i></p> <p>(XPath HPPreliminaryInformation/assessmentStudyDocument/ ProductIdentification/garmentPartCode/mod/@listVersion) [Optional]</p> <p>- nota: <i>this attribute should always be used coupled with “numberingOrg” and “listName”</i></p> <p>(XPath HPPreliminaryInformation/ProductIdentification/ garmentCode/garmentCodeB/garmentVariant/variantCode/@listVersion) [Optional]</p> <p>- nota: <i>this attribute should always be used coupled with “numberingOrg” and “listName”</i></p> <p>(XPath HPPreliminaryInformation/assessmentStudyDocument/ ProductIdentification/acsCode/color/@listVersion) [Optional]</p> <p>- nota: <i>this attribute should always be used coupled with “numberingOrg” and “listName”</i></p> <p>(XPath HPPreliminaryInformation/ProductIdentification/ garmentCode/garmentCodeB/size/@listVersion) [Optional]</p> <p>- nota: <i>this attribute should always be used coupled with “numberingOrg” and “listName”</i></p> <p>(XPath HPPreliminaryInformation/assessmentStudyDocument/ ProductIdentification/garmentCode/garmentCodeB/garmentVariant/variantCode/@listVersion) [Optional]</p> <p>- nota: <i>this attribute should always be used coupled with “numberingOrg” and “listName”</i></p> <p>(XPath HPPreliminaryInformation/ProductIdentification/ garmentCode/garmentCodeA/art/@listVersion) [Optional]</p> <p>- nota: <i>this attribute should always be used coupled with “numberingOrg” and “listName”</i></p> <p>(XPath HPPreliminaryInformation/assessmentStudyDocument/ ProductIdentification/garmentCode/garmentCodeB/drop/@listVersion) [Optional]</p> <p>- nota: <i>this attribute should always be used coupled with “numberingOrg” and “listName”</i></p> <p>(XPath HPPreliminaryInformation/assessmentStudyDocument/ ProductIdentification/yarnCode/color/@listVersion) [Optional]</p> <p>- nota: <i>this attribute should always be used coupled with “numberingOrg” and “listName”</i></p> <p>(XPath HPPreliminaryInformation/ProductIdentification/ garmentPartCode/fabric/@listVersion) [Optional]</p> <p>- nota: <i>this attribute should always be used coupled with “numberingOrg” and “listName”</i></p> <p>(XPath HPPreliminaryInformation/ProductIdentification/ rawCode/color/@listVersion) [Optional]</p>
--	--

	<p>- nota: <i>this attribute should always be used coupled with “numberingOrg” and “listName”</i> (XPath HPPreliminaryInformation/assessmentStudyDocument/ ProductIdentification/rawCode/color/@listVersion) [Optional]</p> <p>- nota: <i>this attribute should always be used coupled with “numberingOrg” and “listName”</i> (XPath HPPreliminaryInformation/ProductIdentification/ garmentPartCode/size/@listVersion) [Optional]</p> <p>- nota: <i>this attribute should always be used coupled with “numberingOrg” and “listName”</i> (XPath HPPreliminaryInformation/assessmentStudyDocument/ ProductIdentification/garmentCode/garmentCodeA/art/@listVersion) [Optional]</p> <p>- nota: <i>this attribute should always be used coupled with “numberingOrg” and “listName”</i> (XPath HPPreliminaryInformation/assessmentStudyDocument/ ProductIdentification/yarnCode/art/@listVersion) [Optional]</p> <p>- nota: <i>this attribute should always be used coupled with “numberingOrg” and “listName”</i> (XPath HPPreliminaryInformation/ProductIdentification/ acsCode/pattern/@listVersion) [Optional]</p> <p>- nota: <i>this attribute should always be used coupled with “numberingOrg” and “listName”</i> (XPath HPPreliminaryInformation/ProductIdentification/ texCode/color/@listVersion) [Optional]</p> <p>- nota: <i>this attribute should always be used coupled with “numberingOrg” and “listName”</i> (XPath HPPreliminaryInformation/assessmentStudyDocument/ ProductIdentification/garmentCode/garmentCodeB/size/@listVersion) [Optional]</p> <p>]</p> <p>- nota: <i>this attribute should always be used coupled with “numberingOrg” and “listName”</i> (XPath HPPreliminaryInformation/ProductIdentification/ rawCode/art/@listVersion) [Optional]</p> <p>- nota: <i>this attribute should always be used coupled with “numberingOrg” and “listName”</i> (XPath HPPreliminaryInformation/ProductIdentification/ acsCode/art/@listVersion) [Optional]</p> <p>- nota: <i>this attribute should always be used coupled with “numberingOrg” and “listName”</i> (XPath HPPreliminaryInformation/assessmentStudyDocument/ ProductIdentification/garmentPartCode/color/@listVersion) [Optional]</p> <p>- nota: <i>this attribute should always be used coupled with “numberingOrg” and “listName”</i> (XPath HPPreliminaryInformation/ProductIdentification/ garmentCode/garmentCodeB/artGroup/@listVersion) [Optional]</p> <p>- nota: <i>this attribute should always be used coupled with “numberingOrg” and “listName”</i> (XPath HPPreliminaryInformation/assessmentStudyDocument/ ProductIdentification/garmentPartCode/size/@listVersion) [Optional]</p> <p>- nota: <i>this attribute should always be used coupled with “numberingOrg” and “listName”</i> (XPath HPPreliminaryInformation/assessmentStudyDocument/ ProductIdentification/texCode/color/@listVersion) [Optional]</p> <p>- nota: <i>this attribute should always be used coupled with “numberingOrg” and “listName”</i> (XPath HPPreliminaryInformation/ProductIdentification/ garmentCode/garmentCodeB/fabric/@listVersion) [Optional]</p> <p>- nota: <i>this attribute should always be used coupled with “numberingOrg” and “listName”</i> (XPath HPPreliminaryInformation/ProductIdentification/ garmentCode/garmentCodeB/color/@listVersion) [Optional]</p> <p>- nota: <i>this attribute should always be used coupled with “numberingOrg” and “listName”</i> (XPath HPPreliminaryInformation/ProductIdentification/ yarnCode/color/@listVersion) [Optional]</p> <p>- nota: <i>this attribute should always be used coupled with “numberingOrg” and “listName”</i> (XPath HPPreliminaryInformation/ProductIdentification/ yarnCode/art/@listVersion) [Optional]</p> <p>- nota: <i>this attribute should always be used coupled with “numberingOrg” and “listName”</i></p>
--	---

	<p>e” (XPath HPPreliminaryInformation/assessmentStudyDocument/ ProductIdentification/rawCode/art/@listVersion) [Optional] - nota: <i>this attribute should always be used coupled with “numberingOrg” and “listName”</i></p> <p>e” (XPath HPPreliminaryInformation/assessmentStudyDocument/ ProductIdentification/texCode/art/@listVersion) [Optional] - nota: <i>this attribute should always be used coupled with “numberingOrg” and “listName”</i></p> <p>e” (XPath HPPreliminaryInformation/assessmentStudyDocument/ ProductIdentification/texCode/pattern/@listVersion) [Optional] - nota: <i>this attribute should always be used coupled with “numberingOrg” and “listName”</i></p> <p>e” (XPath HPPreliminaryInformation/assessmentStudyDocument/ ProductIdentification/garmentCode/garmentCodeB/artGroup/@listVersion) [Optional] - nota: <i>this attribute should always be used coupled with “numberingOrg” and “listName”</i></p> <p>e” (XPath HPPreliminaryInformation/assessmentStudyDocument/ ProductIdentification/garmentCode/garmentCodeB/garmentVariant/variantType /@listVersion) [Optional] - nota: <i>this attribute should always be used coupled with “numberingOrg” and “listName”</i></p> <p>e” (XPath HPPreliminaryInformation/ProductIdentification/ acsCode/color/@listVersion) [Optional] - nota: <i>this attribute should always be used coupled with “numberingOrg” and “listName”</i></p>
@ln	<p>Language code. - base type: string, cod. table: NT60 http://www.ebiz.enea.it/moda-ml/repository/codelist/draft/gc_NT60.xml</p> <p>(XPath HPPreliminaryInformation/assessmentStudyDocument/ ProductIdentification/garmentPartCode/description/@ln) [Optional] (XPath HPPreliminaryInformation/assessmentStudyDocument/ ProductIdentification/yarnCode/description/@ln) [Optional] (XPath HPPreliminaryInformation/assessmentStudyDocument/ description/@ln) [Optional] (XPath HPPreliminaryInformation/assessmentStudyDocument/ publishableAbstract/@ln) [Optional] (XPath HPPreliminaryInformation/assessmentStudyDocument/ ProductIdentification/garmentCode/garmentCodeA/description/@ln) [Optional] (XPath HPPreliminaryInformation/assessmentStudyDocument/ ProductIdentification/rawCode/description/@ln) [Optional] (XPath HPPreliminaryInformation/assessmentStudyDocument/ ProductIdentification/garmentCode/garmentCodeB/description/@ln) [Optional] (XPath HPPreliminaryInformation/assessmentStudyDocument/ ProductIdentification/acsCode/description/@ln) [Optional] (XPath HPPreliminaryInformation/assessmentStudyDocument/ ProductIdentification/texCode/description/@ln) [Optional] (XPath HPPreliminaryInformation/assessmentStudyDocument/ ProductIdentification/description/@ln) [Optional] (XPath HPPreliminaryInformation/assessmentStudyDocument/ title/@ln) [Optional] (XPath HPPreliminaryInformation/selfAssertion/externalRefDoc/description/@ln) [Optional] (XPath HPPreliminaryInformation/selfAssertion/externalRefDoc/title/@ln) [Optional] (XPath HPPreliminaryInformation/ProductIdentification/ yarnCode/description/@ln) [Optional] (XPath HPPreliminaryInformation/ProductIdentification/ garmentPartCode/description/@ln) [Optional] (XPath HPPreliminaryInformation/certificate/certifiedEntity/description/@ln) [Optional] (XPath HPPreliminaryInformation/selfAssertion/sustainabilityCharacteristicText/@ln) [Optional] - nota: <i>Indicates the language of the text</i> (XPath HPPreliminaryInformation/ProductIdentification/ texCode/description/@ln) [Optional] (XPath</p>

	<p>HPPreliminaryInformation/selfAssertion/selfAssertionEntity/description/@In) [Optional]</p> <p>(XPath HPPreliminaryInformation/ProductIdentification/description/@In) [Optional]</p> <p>(XPath HPPreliminaryInformation/selfAssertion/description/@In) [Optional]</p> <p>(XPath HPPreliminaryInformation/ProductIdentification/acsCode/description/@In) [Optional]</p> <p>(XPath HPPreliminaryInformation/ProductIdentification/rawCode/description/@In) [Optional]</p> <p>(XPath HPPreliminaryInformation/ProductIdentification/garmentCode/garmentCodeA/description/@In) [Optional]</p> <p>(XPath HPPreliminaryInformation/processStepsList/processStep/description/@In) [Optional]</p> <p>(XPath HPPreliminaryInformation/certificate/title/@In) [Optional]</p> <p>(XPath HPPreliminaryInformation/certificate/sustainabilityCharacteristicText/@In) [Optional]</p> <p>- nota: <i>Indicates the language of the text</i></p> <p>(XPath HPPreliminaryInformation/ProductIdentification/garmentCode/garmentCodeB/description/@In) [Optional]</p> <p>(XPath HPPreliminaryInformation/certificate/description/@In) [Optional]</p>
location	<p>specification of a location. It can be represented by an identification code (preferable) or a short text (not recommended). For example a GLN code that requires to assign the value "GLN" to the attribute @LRI.</p> <p>- base type: string, max length: 128,</p> <p>(XPath HPPreliminaryInformation/processStepsList/processStep/activityLocation/location) 0-1</p> <p>- note: <i>Use this element only to indicate an identification code of this place.</i></p>
@LRI	<p>issuer of the identifier (or identification system) of a location.</p> <p>- base type: string, cod. table: NT3</p> <p>http://www.ebiz.enea.it/moda-ml/repository/codelist/draft/gc_NT3.xml</p> <p>(XPath HPPreliminaryInformation/processStepsList/processStep/activityLocation/location/@LRI) [Optional]</p>
manufacturingOperationCode	<p>single manufacturing operation type</p> <p>- base type: string, cod. table: T305</p> <p>http://www.ebiz.enea.it/moda-ml/repository/codelist/draft/gc_T305.xml</p> <p>(XPath HPPreliminaryInformation/processStepsList/processStep/manufacturingOperationCode) 1-1</p>
@materialSource	<p>Indicates whether the material is virgin or comes from recycling or reuse processes</p> <p>- base type: string, cod. table: T306</p> <p>http://www.ebiz.enea.it/moda-ml/repository/codelist/draft/gc_T306.xml</p> <p>(XPath HPPreliminaryInformation/productCompos/percCompos/@materialSource) [Optional]</p>
@mime	<p>the mime type of the binary object</p> <p>- base type: normalizedString,</p> <p>(XPath HPPreliminaryInformation/assessmentStudyDocument/attachment/binaryObject/@mime) [Optional]</p> <p>(XPath HPPreliminaryInformation/selfAssertion/externalRefDoc/attachment/binaryObject/@mime) [Optional]</p> <p>(XPath HPPreliminaryInformation/certificate/attachment/binaryObject/@mime) [Optional]</p>
mimeCode	<p>mime type of the external object</p> <p>- base type: normalizedString,</p> <p>(XPath HPPreliminaryInformation/certificate/attachment/externalReference/mimeCode) 0-1 Best Practice</p> <p>(XPath HPPreliminaryInformation/selfAssertion/externalRefDoc/attachment/externalReference/mimeCode) 0-1 Best Practice</p> <p>(XPath HPPreliminaryInformation/assessmentStudyDocument/attachment/externalReference/mimeCode) 0-1 Best Practice</p>
mod	<p>model number of the garment</p> <p>- base type: string, max length: 15,</p> <p>(XPath HPPreliminaryInformation/assessmentStudyDocument/ProductIdentification/garmentPartCode/mod) 1-1</p> <p>- note: <i>when a garment component, it should be the code assigned to the garment arti</i></p>

	<p><i>cle</i> (XPath HPPreliminaryInformation/ProductIdentification/garmentCode/garmentCodeB/mod) 1-1 (XPath HPPreliminaryInformation/ProductIdentification/garmentPartCode/mod) 1-1 - note: <i>when a garment component, it should be the code assigned to the garment article</i> <i>cle</i> (XPath HPPreliminaryInformation/assessmentStudyDocument/ProductIdentification/garmentCode/garmentCodeB/mod) 1-1</p>
msgDate	<p>date of issue of the present message (xml document), according to one of the patterns YYYY-MM-DD, YYYY-MM-DD:HH-MM or YYYY-WW. - base type: string, (XPath HPPreliminaryInformation/SRVheader/msgDate) 0-1</p>
msgID	<p>key identifier of the business document in the information system of the issuing Party. In case of more despatches of the same business document, it is unchanged. - base type: string, max length: 35, (XPath HPPreliminaryInformation/SRVheader/msgID) 0-1</p>
note	<p>free text or structured (computer processing) note. For note structuring use the attributes "noteLabel" and "codelist" - base type: string, max length: 350, (XPath HPPreliminaryInformation/note) 0-9 (XPath HPPreliminaryInformation/assessmentStudyDocument/ProductIdentification/note) 0-99 (XPath HPPreliminaryInformation/certificate/note) 0-99 (XPath HPPreliminaryInformation/selfAssertion/externalRefDoc/note) 0-99 (XPath HPPreliminaryInformation/processStepsList/processStep/note) 0-99 (XPath HPPreliminaryInformation/ProductIdentification/note) 0-99 (XPath HPPreliminaryInformation/assessmentStudyDocument/note) 0-99</p>
@noteLabel	<p>subject qualifier of a note - base type: string, max length: 35, (XPath HPPreliminaryInformation/note/@noteLabel) [Optional] - nota: <i>must be used to qualify the subject of the note</i> (XPath HPPreliminaryInformation/certificate/note/@noteLabel) [Optional] - nota: <i>must be used to qualify the subject of the note</i> (XPath HPPreliminaryInformation/ProductIdentification/note/@noteLabel) [Optional] - nota: <i>must be used to qualify the subject of the note</i> (XPath HPPreliminaryInformation/processStepsList/processStep/note/@noteLabel) [Optional] - nota: <i>must be used to qualify the subject of the note</i> (XPath HPPreliminaryInformation/assessmentStudyDocument/note/@noteLabel) [Optional] - nota: <i>must be used to qualify the subject of the note</i> (XPath HPPreliminaryInformation/selfAssertion/externalRefDoc/note/@noteLabel) [Optional] - nota: <i>must be used to qualify the subject of the note</i> (XPath HPPreliminaryInformation/assessmentStudyDocument/ProductIdentification/note/@noteLabel) [Optional] - nota: <i>must be used to qualify the subject of the note</i></p>
@numberingOrg	<p>code specifying the organisation who has created or owns the coding or numbering system - base type: string, cod. table: NT6 http://www.ebiz.enea.it/moda-ml/repository/codelist/draft/gc_NT6.xml (XPath HPPreliminaryInformation/assessmentStudyDocument/ProductIdentification/garmentCode/garmentCodeA/art/@numberingOrg) [Optional] - nota: <i>this attribute should be used either single or coupled with "listName" and "listVersion"</i> (XPath HPPreliminaryInformation/ProductIdentification/garmentCode/garmentCodeB/garmentVariant/variantCode/@numberingOrg) [Optional] - nota: <i>this attribute should be used either single or coupled with "listName" and "listVersion"</i></p>

	<p>(XPath HPPreliminaryInformation/ProductIdentification/ garmentCode/garmentCodeB/drop/@numberingOrg) [Optional] - nota: <i>this attribute should be used either single or coupled with "listName" and "listVersion"</i></p> <p>(XPath HPPreliminaryInformation/ProductIdentification/ garmentCode/garmentCodeB/color/@numberingOrg) [Optional] - nota: <i>this attribute should be used either single or coupled with "listName" and "listVersion"</i></p> <p>(XPath HPPreliminaryInformation/ProductIdentification/ garmentCode/garmentCodeB/garmentVariant/variantType/@numberingOrg) [Optional] - nota: <i>this attribute should be used either single or coupled with "listName" and "listVersion"</i></p> <p>(XPath HPPreliminaryInformation/assessmentStudyDocument/ ProductIdentification/acsCode/color/@numberingOrg) [Optional] - nota: <i>this attribute should be used either single or coupled with "listName" and "listVersion"</i></p> <p>(XPath HPPreliminaryInformation/ProductIdentification/ rawCode/color/@numberingOrg) [Optional] - nota: <i>this attribute should be used either single or coupled with "listName" and "listVersion"</i></p> <p>(XPath HPPreliminaryInformation/assessmentStudyDocument/ ProductIdentification/garmentCode/garmentCodeB/added/@numberingOrg) [Optional] - nota: <i>this attribute should be used either single or coupled with "listName" and "listVersion"</i></p> <p>(XPath HPPreliminaryInformation/SRVheader/senderParty/id/@numberingOrg) [Optional] (XPath HPPreliminaryInformation/ProductIdentification/ garmentCode/garmentCodeB/size/@numberingOrg) [Optional] - nota: <i>this attribute should be used either single or coupled with "listName" and "listVersion"</i></p> <p>(XPath HPPreliminaryInformation/assessmentStudyDocument/ ProductIdentification/acsCode/added/@numberingOrg) [Optional] - nota: <i>this attribute should be used either single or coupled with "listName" and "listVersion"</i></p> <p>(XPath HPPreliminaryInformation/ProductIdentification/ garmentCode/garmentCodeB/artGroup/@numberingOrg) [Optional] - nota: <i>this attribute should be used either single or coupled with "listName" and "listVersion"</i></p> <p>(XPath HPPreliminaryInformation/assessmentStudyDocument/ docID/@numberingOrg) [Optional] - nota: <i>here can be specified whose document numbering is used (e.g.: Client, Supplier, ..)</i></p> <p>(XPath HPPreliminaryInformation/ProductIdentification/ garmentCode/garmentCodeB/mod/@numberingOrg) [Optional] (XPath HPPreliminaryInformation/assessmentStudyDocument/ ProductIdentification/acsCode/@numberingOrg) [Optional] (XPath HPPreliminaryInformation/ProductIdentification/ texCode/art/@numberingOrg) [Optional] - nota: <i>this attribute should be used either single or coupled with "listName" and "listVersion"</i></p> <p>(XPath HPPreliminaryInformation/ProductIdentification/ garmentCode/@numberingOrg) [Optional] (XPath HPPreliminaryInformation/ProductIdentification/ garmentCode/garmentCodeB/@numberingOrg) [Optional] (XPath HPPreliminaryInformation/selfAssertion/externalRefDoc/issuerParty/id/@numberingOrg) [Optional] (XPath HPPreliminaryInformation/certificate/certifiedParty/id/@numberingOrg) [Optional] (XPath HPPreliminaryInformation/assessmentStudyDocument/ ProductIdentification/acsCode/pattern/@numberingOrg) [Optional] - nota: <i>this attribute should be used either single or coupled with "listName" and "listVersion"</i></p> <p>(XPath HPPreliminaryInformation/assessmentStudyDocument/ ProductIdentification/note/@numberingOrg) [Optional] - nota: <i>must be used to specify the organization that created the list of codes used in "noteLabel"</i></p> <p>(XPath HPPreliminaryInformation/assessmentStudyDocument/ </p>
--	--

	<p>ProductIdentification/acsCode/art/@numberingOrg) [Optional]</p> <p>- nota: <i>this attribute should be used either single or coupled with "listName" and "listVersion"</i></p> <p>(XPath HPPreliminaryInformation/assessmentStudyDocument/ ProductIdentification/garmentCode/garmentCodeB/mod/@numberingOrg) [Optional]</p> <p>(XPath HPPreliminaryInformation/ProductIdentification/ garmentCode/garmentCodeB/fabric/@numberingOrg) [Optional]</p> <p>- nota: <i>this attribute should be used either single or coupled with "listName" and "listVersion"</i></p> <p>(XPath HPPreliminaryInformation/assessmentStudyDocument/ ProductIdentification/garmentPartCode/@numberingOrg) [Optional]</p> <p>(XPath HPPreliminaryInformation/ProductIdentification/ yarnCode/color/@numberingOrg) [Optional]</p> <p>- nota: <i>this attribute should be used either single or coupled with "listName" and "listVersion"</i></p> <p>(XPath HPPreliminaryInformation/assessmentStudyDocument/ ProductIdentification/garmentPartCode/added/@numberingOrg) [Optional]</p> <p>- nota: <i>this attribute should be used either single or coupled with "listName" and "listVersion"</i></p> <p>(XPath HPPreliminaryInformation/ProductIdentification/ yarnCode/art/@numberingOrg) [Optional]</p> <p>- nota: <i>this attribute should be used either single or coupled with "listName" and "listVersion"</i></p> <p>(XPath HPPreliminaryInformation/ProductIdentification/ yarnCode/added/@numberingOrg) [Optional]</p> <p>- nota: <i>this attribute should be used either single or coupled with "listName" and "listVersion"</i></p> <p>(XPath HPPreliminaryInformation/ProductIdentification/ note/@numberingOrg) [Optional]</p> <p>- nota: <i>must be used to specify the organization that created the list of codes used in "noteLabel"</i></p> <p>(XPath HPPreliminaryInformation/certificate/docID/@numberingOrg) [Optional]</p> <p>- nota: <i>here can be specified whose document numbering is used (e.g.: Client, Supplier, ..)</i></p> <p>(XPath HPPreliminaryInformation/ProductIdentification/ yarnCode/@numberingOrg) [Optional] [Default= CL]</p> <p>(XPath HPPreliminaryInformation/assessmentStudyDocument/ signatureInformation/signatoryParty/id/@numberingOrg) [Optional]</p> <p>(XPath HPPreliminaryInformation/assessmentStudyDocument/ ProductIdentification/garmentCode/garmentCodeB/drop/@numberingOrg) [Optional]</p> <p>- nota: <i>this attribute should be used either single or coupled with "listName" and "listVersion"</i></p> <p>(XPath HPPreliminaryInformation/assessmentStudyDocument/ ProductIdentification/garmentCode/garmentCodeB/size/@numberingOrg) [Optional]</p> <p>- nota: <i>this attribute should be used either single or coupled with "listName" and "listVersion"</i></p> <p>(XPath HPPreliminaryInformation/assessmentStudyDocument/ ProductIdentification/garmentPartCode/size/@numberingOrg) [Optional]</p> <p>- nota: <i>this attribute should be used either single or coupled with "listName" and "listVersion"</i></p> <p>(XPath HPPreliminaryInformation/processStepsList/ processStep/note/@numberingOrg) [Optional]</p> <p>- nota: <i>must be used to specify the organization that created the list of codes used in "noteLabel"</i></p> <p>(XPath HPPreliminaryInformation/assessmentStudyDocument/ ProductIdentification/garmentPartCode/color/@numberingOrg) [Optional]</p> <p>- nota: <i>this attribute should be used either single or coupled with "listName" and "listVersion"</i></p> <p>(XPath HPPreliminaryInformation/ProductIdentification/ texCode/@numberingOrg) [Optional]</p> <p>(XPath HPPreliminaryInformation/ProductIdentification/ garmentCode/garmentCodeB/added/@numberingOrg) [Optional]</p> <p>- nota: <i>this attribute should be used either single or coupled with "listName" and "listVersion"</i></p> <p>(XPath HPPreliminaryInformation/assessmentStudyDocument/ ProductIdentification/garmentCode/garmentCodeB/garmentVariant/variantCode/@numberingOrg) [Optional]</p>
--	---

	<p>- nota: <i>this attribute should be used either single or coupled with "listName" and "listVersion"</i> (XPath HPPreliminaryInformation/certificate/issuerParty/id/@numberingOrg) [Optional]</p> <p>(XPath HPPreliminaryInformation/assessmentStudyDocument/ProductIdentification/garmentCode/garmentCodeB/@numberingOrg) [Optional]</p> <p>(XPath HPPreliminaryInformation/assessmentStudyDocument/ProductIdentification/garmentPartCode/mod/@numberingOrg) [Optional]</p> <p>(XPath HPPreliminaryInformation/assessmentStudyDocument/note/@numberingOrg) [Optional]</p> <p>- nota: <i>must be used to specify the organization that created the list of codes used in "noteLabel"</i> (XPath HPPreliminaryInformation/assessmentStudyDocument/ProductIdentification/garmentCode/@numberingOrg) [Optional]</p> <p>(XPath HPPreliminaryInformation/selfAssertion/externalRefDoc/note/@numberingOrg) [Optional]</p> <p>- nota: <i>must be used to specify the organization that created the list of codes used in "noteLabel"</i> (XPath HPPreliminaryInformation/ProductIdentification/garmentCode/garmentCodeA/art/@numberingOrg) [Optional]</p> <p>- nota: <i>this attribute should be used either single or coupled with "listName" and "listVersion"</i> (XPath HPPreliminaryInformation/assessmentStudyDocument/ProductIdentification/garmentPartCode/fabric/@numberingOrg) [Optional]</p> <p>- nota: <i>this attribute should be used either single or coupled with "listName" and "listVersion"</i> (XPath HPPreliminaryInformation/assessmentStudyDocument/ProductIdentification/garmentCode/garmentCodeB/artGroup/@numberingOrg) [Optional]</p> <p>- nota: <i>this attribute should be used either single or coupled with "listName" and "listVersion"</i> (XPath HPPreliminaryInformation/assessmentStudyDocument/ProductIdentification/texCode/added/@numberingOrg) [Optional]</p> <p>- nota: <i>this attribute should be used either single or coupled with "listName" and "listVersion"</i> (XPath HPPreliminaryInformation/ProductIdentification/acsCode/added/@numberingOrg) [Optional]</p> <p>- nota: <i>this attribute should be used either single or coupled with "listName" and "listVersion"</i> (XPath HPPreliminaryInformation/assessmentStudyDocument/ProductIdentification/yarnCode/@numberingOrg) [Optional] [Default= CL]</p> <p>(XPath HPPreliminaryInformation/assessmentStudyDocument/ProductIdentification/yarnCode/art/@numberingOrg) [Optional]</p> <p>- nota: <i>this attribute should be used either single or coupled with "listName" and "listVersion"</i> (XPath HPPreliminaryInformation/assessmentStudyDocument/ProductIdentification/rawCode/added/@numberingOrg) [Optional]</p> <p>- nota: <i>this attribute should be used either single or coupled with "listName" and "listVersion"</i> (XPath HPPreliminaryInformation/ProductIdentification/acsCode/pattern/@numberingOrg) [Optional]</p> <p>- nota: <i>this attribute should be used either single or coupled with "listName" and "listVersion"</i> (XPath HPPreliminaryInformation/ProductIdentification/acsCode/color/@numberingOrg) [Optional]</p> <p>- nota: <i>this attribute should be used either single or coupled with "listName" and "listVersion"</i> (XPath HPPreliminaryInformation/ProductIdentification/garmentPartCode/@numberingOrg) [Optional]</p> <p>(XPath HPPreliminaryInformation/ProductIdentification/texCode/color/@numberingOrg) [Optional]</p> <p>- nota: <i>this attribute should be used either single or coupled with "listName" and "listVersion"</i> (XPath HPPreliminaryInformation/certificate/note/@numberingOrg) [Optional]</p> <p>- nota: <i>must be used to specify the organization that created the list of codes used in "noteLabel"</i> (XPath HPPreliminaryInformation/selfAssertion/externalRefDoc/signatureInformation/signatoryParty/id/@numberingOrg) [Optional]</p>
--	--

	<p>(XPath HPPreliminaryInformation/selfAssertion/issuerParty/id/@numberingOrg) [Optional]</p> <p>(XPath HPPreliminaryInformation/assessmentStudyDocument/ProductIdentification/yarnCode/color/@numberingOrg) [Optional]</p> <p>- nota: <i>this attribute should be used either single or coupled with "listName" and "listVersion"</i></p> <p>(XPath HPPreliminaryInformation/selfAssertion/externalRefDoc/docID/@numberingOrg) [Optional]</p> <p>- nota: <i>here can be specified whose document numbering is used (e.g.: Client, Supplier, ..)</i></p> <p>(XPath HPPreliminaryInformation/ProductIdentification/texCode/added/@numberingOrg) [Optional]</p> <p>- nota: <i>this attribute should be used either single or coupled with "listName" and "listVersion"</i></p> <p>(XPath HPPreliminaryInformation/ProductIdentification/rawCode/art/@numberingOrg) [Optional]</p> <p>- nota: <i>this attribute should be used either single or coupled with "listName" and "listVersion"</i></p> <p>(XPath HPPreliminaryInformation/assessmentStudyDocument/ProductIdentification/rawCode/@numberingOrg) [Optional]</p> <p>(XPath HPPreliminaryInformation/ProductIdentification/rawCode/added/@numberingOrg) [Optional]</p> <p>- nota: <i>this attribute should be used either single or coupled with "listName" and "listVersion"</i></p> <p>(XPath HPPreliminaryInformation/assessmentStudyDocument/ProductIdentification/rawCode/art/@numberingOrg) [Optional]</p> <p>- nota: <i>this attribute should be used either single or coupled with "listName" and "listVersion"</i></p> <p>(XPath HPPreliminaryInformation/ProductIdentification/acsCode/@numberingOrg) [Optional]</p> <p>(XPath HPPreliminaryInformation/assessmentStudyDocument/issuerParty/id/@numberingOrg) [Optional]</p> <p>(XPath HPPreliminaryInformation/ProductIdentification/acsCode/art/@numberingOrg) [Optional]</p> <p>- nota: <i>this attribute should be used either single or coupled with "listName" and "listVersion"</i></p> <p>(XPath HPPreliminaryInformation/assessmentStudyDocument/ProductIdentification/garmentCode/garmentCodeB/color/@numberingOrg) [Optional]</p> <p>- nota: <i>this attribute should be used either single or coupled with "listName" and "listVersion"</i></p> <p>(XPath HPPreliminaryInformation/assessmentStudyDocument/ProductIdentification/rawCode/color/@numberingOrg) [Optional]</p> <p>- nota: <i>this attribute should be used either single or coupled with "listName" and "listVersion"</i></p> <p>(XPath HPPreliminaryInformation/ProductIdentification/rawCode/@numberingOrg) [Optional]</p> <p>(XPath HPPreliminaryInformation/assessmentStudyDocument/ProductIdentification/texCode/pattern/@numberingOrg) [Optional]</p> <p>- nota: <i>this attribute should be used either single or coupled with "listName" and "listVersion"</i></p> <p>(XPath HPPreliminaryInformation/ProductIdentification/garmentPartCode/color/@numberingOrg) [Optional]</p> <p>- nota: <i>this attribute should be used either single or coupled with "listName" and "listVersion"</i></p> <p>(XPath HPPreliminaryInformation/assessmentStudyDocument/reviewerParty/id/@numberingOrg) [Optional]</p> <p>(XPath HPPreliminaryInformation/ProductIdentification/garmentPartCode/fabric/@numberingOrg) [Optional]</p> <p>- nota: <i>this attribute should be used either single or coupled with "listName" and "listVersion"</i></p> <p>(XPath HPPreliminaryInformation/assessmentStudyDocument/attachment/fileName/@numberingOrg) [Optional]</p> <p>(XPath HPPreliminaryInformation/certificate/attachment/fileName/@numberingOrg) [Optional]</p> <p>(XPath HPPreliminaryInformation/ProductIdentification/garmentPartCode/size/@numberingOrg) [Optional]</p> <p>- nota: <i>this attribute should be used either single or coupled with "listName" and "listVersion"</i></p>
--	--

	<p>(XPath HPPreliminaryInformation/selfAssertion/externalRefDoc/attachment/fileName/@numberingOrg) [Optional]</p> <p>(XPath HPPreliminaryInformation/SRVheader/receiverParty/id/@numberingOrg) [Optional]</p> <p>(XPath HPPreliminaryInformation/assessmentStudyDocument/ProductIdentification/garmentCode/garmentCodeB/garmentVariant/variantType/@numberingOrg) [Optional]</p> <p>- nota: <i>this attribute should be used either single or coupled with "listName" and "listVersion"</i></p> <p>(XPath HPPreliminaryInformation/ProductIdentification/garmentPartCode/added/@numberingOrg) [Optional]</p> <p>- nota: <i>this attribute should be used either single or coupled with "listName" and "listVersion"</i></p> <p>(XPath HPPreliminaryInformation/assessmentStudyDocument/ProductIdentification/texCode/color/@numberingOrg) [Optional]</p> <p>- nota: <i>this attribute should be used either single or coupled with "listName" and "listVersion"</i></p> <p>(XPath HPPreliminaryInformation/assessmentStudyDocument/ProductIdentification/garmentCode/garmentCodeB/fabric/@numberingOrg) [Optional]</p> <p>- nota: <i>this attribute should be used either single or coupled with "listName" and "listVersion"</i></p> <p>(XPath HPPreliminaryInformation/assessmentStudyDocument/ProductIdentification/texCode/@numberingOrg) [Optional]</p> <p>(XPath HPPreliminaryInformation/ProductIdentification/garmentPartCode/mod/@numberingOrg) [Optional]</p> <p>(XPath HPPreliminaryInformation/ProductIdentification/texCode/pattern/@numberingOrg) [Optional]</p> <p>- nota: <i>this attribute should be used either single or coupled with "listName" and "listVersion"</i></p> <p>(XPath HPPreliminaryInformation/note/@numberingOrg) [Optional]</p> <p>- nota: <i>must be used to specify the organization that created the list of codes used in "noteLabel"</i></p> <p>(XPath HPPreliminaryInformation/assessmentStudyDocument/ProductIdentification/texCode/art/@numberingOrg) [Optional]</p> <p>- nota: <i>this attribute should be used either single or coupled with "listName" and "listVersion"</i></p> <p>(XPath HPPreliminaryInformation/assessmentStudyDocument/ProductIdentification/yarnCode/added/@numberingOrg) [Optional]</p> <p>- nota: <i>this attribute should be used either single or coupled with "listName" and "listVersion"</i></p>
objectTypeCode	<p>code that identifies the type of object</p> <p>- base type: string, cod. table: T302</p> <p>http://www.ebiz.enea.it/moda-ml/repository/codelist/draft/gc_T302.xml</p> <p>(XPath HPPreliminaryInformation/assessmentStudyDocument/ProductIdentification/objectTypeCode) 1-1</p> <p>(XPath HPPreliminaryInformation/ProductIdentification/objectTypeCode) 1-1</p>
@part	<p>percent fraction</p> <p>- base type: decimal, min inclusive: 1, max inclusive: 100, fraction digits: 2,</p> <p>(XPath HPPreliminaryInformation/processStepsList/processStep/activityLocation/@part) [Optional] [Default= 100]</p> <p>- nota: <i>percentage of activities performed at the location</i></p>
pattern	<p>pattern/design number of the product, when not included in the article code</p> <p>- base type: string, max length: 15,</p> <p>(XPath HPPreliminaryInformation/ProductIdentification/texCode/pattern) 0-1</p> <p>(XPath HPPreliminaryInformation/ProductIdentification/acsCode/pattern) 0-1</p> <p>(XPath HPPreliminaryInformation/assessmentStudyDocument/ProductIdentification/acsCode/pattern) 0-1</p> <p>(XPath HPPreliminaryInformation/assessmentStudyDocument/ProductIdentification/texCode/pattern) 0-1</p>
percCompos	<p>fiber percentage in the product composition</p> <p>- base type: decimal, min inclusive: 0, max inclusive: 100, fraction digits: 2,</p> <p>(XPath HPPreliminaryInformation/productCompos/percCompos) 1-99</p>

@percSourcesRenewable	<p>indicates the percentage of renewable sources</p> <ul style="list-style-type: none"> - base type: decimal, (XPath HPPreliminaryInformation/productCompos/percCompos/@percSourcesRenewable) [Optional] - nota: use only for virgin material
person	<p>name of a person (e.g. contact person within an organization)</p> <ul style="list-style-type: none"> - base type: string, max length: 40, (XPath HPPreliminaryInformation/processStepsList/processStep/activityLocation/person) 0-1 (XPath HPPreliminaryInformation/SRVheader/receiverParty/person) 0-1 (XPath HPPreliminaryInformation/selfAssertion/externalRefDoc/signatureInformation/signatoryParty/person) 0-1 (XPath HPPreliminaryInformation/assessmentStudyDocument/signatureInformation/signatoryParty/person) 0-1 (XPath HPPreliminaryInformation/assessmentStudyDocument/reviewerParty/person) 0-1 (XPath HPPreliminaryInformation/assessmentStudyDocument/issuerParty/person) 0-1 (XPath HPPreliminaryInformation/selfAssertion/issuerParty/person) 0-1 (XPath HPPreliminaryInformation/selfAssertion/externalRefDoc/issuerParty/person) 0-1 (XPath HPPreliminaryInformation/SRVheader/senderParty/person) 0-1 (XPath HPPreliminaryInformation/certificate/issuerParty/person) 0-1 (XPath HPPreliminaryInformation/certificate/certifiedParty/person) 0-1
@phone	<p>phone number of the contact person within a Party</p> <ul style="list-style-type: none"> - base type: string, max length: 35, (XPath HPPreliminaryInformation/assessmentStudyDocument/issuerParty/person/@phone) [Optional] (XPath HPPreliminaryInformation/SRVheader/receiverParty/person/@phone) [Optional] (XPath HPPreliminaryInformation/assessmentStudyDocument/author/@phone) [Optional] (XPath HPPreliminaryInformation/assessmentStudyDocument/reviewerParty/person/@phone) [Optional] (XPath HPPreliminaryInformation/assessmentStudyDocument/signatureInformation/signatoryParty/person/@phone) [Optional] (XPath HPPreliminaryInformation/certificate/issuerParty/person/@phone) [Optional] (XPath HPPreliminaryInformation/selfAssertion/externalRefDoc/signatureInformation/signatoryParty/person/@phone) [Optional] (XPath HPPreliminaryInformation/selfAssertion/externalRefDoc/issuerParty/person/@phone) [Optional] (XPath HPPreliminaryInformation/selfAssertion/issuerParty/person/@phone) [Optional] (XPath HPPreliminaryInformation/certificate/certifiedParty/person/@phone) [Optional] (XPath HPPreliminaryInformation/processStepsList/processStep/activityLocation/person/@phone) [Optional] (XPath HPPreliminaryInformation/SRVheader/senderParty/person/@phone) [Optional]
platformServiceCode	<p>code of the available service</p> <ul style="list-style-type: none"> - base type: string, cod. table: TRK01 http://www.ebiz.enea.it/moda-ml/repository/codelist/draft/gc_TRK01.xml (XPath HPPreliminaryInformation/SRVheader/platformServiceReference/platformServiceCode) 1-1
postCode	<p>code defining the postal zone</p> <ul style="list-style-type: none"> - base type: string, max length: 10, (XPath HPPreliminaryInformation/assessmentStudyDocument/signatureInformation/signatoryParty/postCode) 0-1 (XPath HPPreliminaryInformation/selfAssertion/issuerParty/postCode) 0-1 (XPath HPPreliminaryInformation/certificate/certifiedParty/postCode) 0-1

	<p>(XPath HPPreliminaryInformation/certificate/issuerParty/postCode) 0-1 (XPath HPPreliminaryInformation/selfAssertion/externalRefDoc/issuerParty/postCode) 0-1 (XPath HPPreliminaryInformation/selfAssertion/externalRefDoc/signatureInformation/signatoryParty/postCode) 0-1 (XPath HPPreliminaryInformation/assessmentStudyDocument/issuerParty/postCode) 0-1 (XPath HPPreliminaryInformation/processStepsList/processStep/activityLocation/postCode) 0-1 (XPath HPPreliminaryInformation/SRVheader/senderParty/postCode) 0-1 (XPath HPPreliminaryInformation/assessmentStudyDocument/reviewerParty/postCode) 0-1 (XPath HPPreliminaryInformation/SRVheader/receiverParty/postCode) 0-1</p>
processStepID	<p>internal identifier of the single manufacturing operation needed to produce the product - base type: string, (XPath HPPreliminaryInformation/processStepsList/processStep/processStepID) 1-1 - note: <i>internal identifier of the single manufacturing operation</i></p>
@progr	<p>progressive number in the sequence - base type: positiveInteger, min inclusive: 1, (XPath HPPreliminaryInformation/processStepsList/processStep/@progr) [Required] - nota: <i>Indicates the sequence of operations necessary to make the product. In the case of repeated operations, assign different values of progr.</i></p>
publishableAbstract	<p>publishable abstract of the study - base type: string, (XPath HPPreliminaryInformation/assessmentStudyDocument/publishableAbstract) 0-99 - note: <i>Only one instance of this element for each different value of 'ln' attribute (language)</i></p>
@recyclingProcessEfficiency	<p>recycling process efficiency rate (percentage by weight). - base type: decimal, min inclusive: 0, max inclusive: 100, (XPath HPPreliminaryInformation/productCompos/percCompos/@recyclingProcessEfficiency) [Optional] - nota: <i>process efficiency declared by the fibre supplier</i></p>
@recyclingProcessMethod	<p>recycling process method - base type: string, cod. table: T307 http://www.ebiz.enea.it/moda-ml/repository/codelist/draft/gc_T307.xml (XPath HPPreliminaryInformation/productCompos/percCompos/@recyclingProcessMethod) [Optional] - nota: <i>use only for non virgin material</i></p>
reviewDate	<p>date of accomplishment of the document review, according to one of the patterns YYYY-MM-DD, YYYY-MM-DD:HH-MM or YYYY-WW. - base type: string, (XPath HPPreliminaryInformation/assessmentStudyDocument/reviewDate) 0-1</p>
@role	<p>Third Party role qualifier - base type: string, cod. table: NT2 http://www.ebiz.enea.it/moda-ml/repository/codelist/draft/gc_NT2.xml (XPath HPPreliminaryInformation/SRVheader/senderParty/@role) [Optional] - nota: <i>The use of this attribute is mandatory when the element to which it is associated has TRCHeader as its parent.</i> (XPath HPPreliminaryInformation/SRVheader/receiverParty/@role) [Optional] - nota: <i>The use of this attribute is mandatory when the element to which it is associated has TRCHeader as its parent.</i></p>
@schemeID	<p>identifier of an identification scheme - base type: string, (XPath HPPreliminaryInformation/selfAssertion/selfAssertionEntity/entityID/@schemeID) [Required] (XPath HPPreliminaryInformation/certificate/attachment/hashFootprint/@schemeID) [Optional] - nota: <i>specify for which system this hash footprint might be used as identifier (for example HDFS system..)</i></p>

	<p>(XPath HPPreliminaryInformation/assessmentStudyDocument/ProductIdentification/uniqueProductID/@schemeID) [Required]</p> <p>(XPath HPPreliminaryInformation/assessmentStudyDocument/attachment/hashFootprint/@schemeID) [Optional]</p> <p>- nota: <i>specify for which system this hash footprint might be used as identifier (for example HDFS system..)</i></p> <p>(XPath HPPreliminaryInformation/certificate/certificateID/@schemeID) [Optional]</p> <p>(XPath HPPreliminaryInformation/certificate/certifiedEntity/entityID/@schemeID) [Required]</p> <p>(XPath HPPreliminaryInformation/ProductIdentification/uniqueProductID/@schemeID) [Required]</p> <p>(XPath HPPreliminaryInformation/selfAssertion/externalRefDoc/attachment/hashFootprint/@schemeID) [Optional]</p> <p>- nota: <i>specify for which system this hash footprint might be used as identifier (for example HDFS system..)</i></p>
@sender	<p>qualifier that specifies the Party issuing of the document</p> <p>- base type: boolean,</p> <p>(XPath HPPreliminaryInformation/SRVheader/receiverParty/@sender) [Optional]</p> <p>- nota: <i>This attribute is mandatory when the STYLESHEET must be used.</i></p> <p>(XPath HPPreliminaryInformation/SRVheader/senderParty/@sender) [Optional]</p> <p>- nota: <i>This attribute is mandatory when the STYLESHEET must be used.</i></p>
serviceRequestedAction	<p>requested service action</p> <p>- base type: string, cod. table: TRK02</p> <p>http://www.ebiz.enea.it/moda-ml/repository/codelist/draft/gc_TRK02.xml</p> <p>(XPath HPPreliminaryInformation/SRVheader/platformServiceReference/serviceRequestedAction) 1-1</p>
serviceTicketID	<p>service ticket identifier</p> <p>- base type: string,</p> <p>(XPath HPPreliminaryInformation/SRVheader/platformServiceReference/serviceTicketID) 0-1</p> <p>- note: <i>mandatory after activation</i></p>
signatureTypeCode	<p>indicator of existing and type of signature</p> <p>- base type: string,</p> <p>(XPath HPPreliminaryInformation/assessmentStudyDocument/signatureInformation/signatureTypeCode) 1-1</p> <p>(XPath HPPreliminaryInformation/selfAssertion/externalRefDoc/signatureInformation/signatureTypeCode) 1-1</p>
size	<p>size number of a fashion product (knitwear, clothing, ..)</p> <p>- base type: string, max length: 15,</p> <p>(XPath HPPreliminaryInformation/assessmentStudyDocument/ProductIdentification/garmentCode/garmentCodeB/size) 0-1</p> <p>(XPath HPPreliminaryInformation/ProductIdentification/garmentCode/garmentCodeB/size) 0-1</p> <p>(XPath HPPreliminaryInformation/ProductIdentification/garmentPartCode/size) 0-1</p> <p>(XPath HPPreliminaryInformation/assessmentStudyDocument/ProductIdentification/garmentPartCode/size) 0-1</p>
@standardOwner	<p>standard owner is the organisation that owns and manages the standard specifications (for example Textile exchange or OEKO-TEX)</p> <p>- base type: string,</p> <p>(XPath HPPreliminaryInformation/certificate/certificationStandardName/@standardOwner) [Required]</p>
@storageAction	<p>indicates how to insert the information to which it refers into an archive, also specifying what should happen to the pre-existing information.</p> <p>- base type: string, cod. table: NT312</p> <p>http://www.ebiz.enea.it/moda-ml/repository/codelist/draft/gc_NT312.xml</p> <p>(XPath HPPreliminaryInformation/processStepsList/@storageAction) [Required]</p>
street	<p>street and building number identifying a location</p>

	<p>- base type: string, max length: 80, (XPath HPPreliminaryInformation/assessmentStudyDocument/ signatureInformation/signatoryParty/street) 0-1 (XPath HPPreliminaryInformation/selfAssertion/externalRefDoc/signatureInformation/si gnatoryParty/street) 0-1 (XPath HPPreliminaryInformation/selfAssertion/issuerParty/street) 0-1 (XPath HPPreliminaryInformation/assessmentStudyDocument/ reviewerParty/street) 0-1 (XPath HPPreliminaryInformation/certificate/issuerParty/street) 0-1 (XPath HPPreliminaryInformation/processStepsList/ processStep/activityLocation/street) 0-1 (XPath HPPreliminaryInformation/SRV/header/receiverParty/street) 0-1 (XPath HPPreliminaryInformation/selfAssertion/externalRefDoc/issuerParty/street) 0-1 (XPath HPPreliminaryInformation/SRV/header/senderParty/street) 0-1 (XPath HPPreliminaryInformation/certificate/certifiedParty/street) 0-1 (XPath HPPreliminaryInformation/assessmentStudyDocument/ issuerParty/street) 0-1</p>
subCountry	<p>short name or code of the sub-country entity - base type: string, max length: 9, (XPath HPPreliminaryInformation/SRV/header/receiverParty/subCountry) 0-1 (XPath HPPreliminaryInformation/assessmentStudyDocument/ reviewerParty/subCountry) 0-1 (XPath HPPreliminaryInformation/assessmentStudyDocument/ issuerParty/subCountry) 0-1 (XPath HPPreliminaryInformation/selfAssertion/externalRefDoc/issuerParty/subCountr y) 0-1 (XPath HPPreliminaryInformation/assessmentStudyDocument/ signatureInformation/signatoryParty/subCountry) 0-1 (XPath HPPreliminaryInformation/selfAssertion/externalRefDoc/signatureInformation/si gnatoryParty/subCountry) 0-1 (XPath HPPreliminaryInformation/selfAssertion/issuerParty/subCountry) 0-1 (XPath HPPreliminaryInformation/SRV/header/senderParty/subCountry) 0-1 (XPath HPPreliminaryInformation/processStepsList/ processStep/activityLocation/subCountry) 0-1 (XPath HPPreliminaryInformation/certificate/certifiedParty/subCountry) 0-1 (XPath HPPreliminaryInformation/certificate/issuerParty/subCountry) 0-1</p>
subDept	<p>name or code of a department - base type: string, max length: 40, (XPath HPPreliminaryInformation/certificate/certifiedParty/subDept) 0-1 (XPath HPPreliminaryInformation/processStepsList/ processStep/activityLocation/subDept) 0-1 (XPath HPPreliminaryInformation/assessmentStudyDocument/ issuerParty/subDept) 0-1 (XPath HPPreliminaryInformation/selfAssertion/externalRefDoc/issuerParty/subDept) 0 -1 (XPath HPPreliminaryInformation/assessmentStudyDocument/ signatureInformation/signatoryParty/subDept) 0-1 (XPath HPPreliminaryInformation/certificate/issuerParty/subDept) 0-1 (XPath HPPreliminaryInformation/SRV/header/senderParty/subDept) 0-1 (XPath HPPreliminaryInformation/SRV/header/receiverParty/subDept) 0-1 (XPath HPPreliminaryInformation/selfAssertion/externalRefDoc/signatureInformation/si gnatoryParty/subDept) 0-1 (XPath HPPreliminaryInformation/assessmentStudyDocument/ reviewerParty/subDept) 0-1 (XPath HPPreliminaryInformation/selfAssertion/issuerParty/subDept) 0-1</p>
sustainabilityCharacteristicText	<p>text that describes a single sustainability characteristic (for example a claim). The cont ent of the element must be unique, it might be translated and repeated into more langu ages (thus no more than one instance for each language). - base type: string, min length: 1, (XPath HPPreliminaryInformation/selfAssertion/sustainabilityCharacteristicText) 0-99</p>

	<p>- note: Describe the assertion. It could be a public claim. Only one instance of this element for each different value of 'In' attribute (language) (XPath HPPreliminaryInformation/certificate/sustainabilityCharacteristicText) 0-99</p>
title	<p>document title - base type: string, (XPath HPPreliminaryInformation/selfAssertion/externalRefDoc/title) 0-unbounded - note: Only one instance of this element for each different value of 'In' attribute (language) (XPath HPPreliminaryInformation/certificate/title) 0-unbounded - note: Only one instance of this element for each different value of 'In' attribute (language) (XPath HPPreliminaryInformation/assessmentStudyDocument/title) 0-unbounded - note: Only one instance of this element for each different value of 'In' attribute (language)</p>
transactionReceipt	<p>transaction receipt on blockchain - base type: string, max length: 80, (XPath HPPreliminaryInformation/assessmentStudyDocument/attachment/blockChainReference/transactionReceipt) 1-9 (XPath HPPreliminaryInformation/certificate/attachment/blockChainReference/transactionReceipt) 1-9 (XPath HPPreliminaryInformation/selfAssertion/externalRefDoc/attachment/blockChainReference/transactionReceipt) 1-9</p>
@uid	<p>unique element identifier within the xml document - base type: string, (XPath HPPreliminaryInformation/assessmentStudyDocument/attachment/@uid) [Optional] (XPath HPPreliminaryInformation/certificate/attachment/@uid) [Optional] (XPath HPPreliminaryInformation/selfAssertion/externalRefDoc/attachment/@uid) [Optional]</p>
@um	<p>specification of the unit of measure - base type: string, cod. table: NT7 http://www.ebiz.enea.it/moda-ml/repository/codelist/draft/gc_NT7.xml (XPath HPPreliminaryInformation/processStepsList/processStep/activityLocation/geoCoordinates/@um) [Optional] [Default= DEGD] - nota: when not specified assume decimal DEGREES (XPath HPPreliminaryInformation/selfAssertion/externalRefDoc/signatureInformation/signatoryParty/geoCoordinates/@um) [Optional] [Default= DEGD] - nota: when not specified assume decimal DEGREES (XPath HPPreliminaryInformation/certificate/certifiedParty/geoCoordinates/@um) [Optional] [Default= DEGD] - nota: when not specified assume decimal DEGREES (XPath HPPreliminaryInformation/assessmentStudyDocument/signatureInformation/signatoryParty/geoCoordinates/@um) [Optional] [Default= DEGD] - nota: when not specified assume decimal DEGREES (XPath HPPreliminaryInformation/SRV/header/receiverParty/geoCoordinates/@um) [Optional] [Default= DEGD] - nota: when not specified assume decimal DEGREES (XPath HPPreliminaryInformation/certificate/issuerParty/geoCoordinates/@um) [Optional] [Default= DEGD] - nota: when not specified assume decimal DEGREES (XPath HPPreliminaryInformation/assessmentStudyDocument/issuerParty/geoCoordinates/@um) [Optional] [Default= DEGD] - nota: when not specified assume decimal DEGREES (XPath HPPreliminaryInformation/assessmentStudyDocument/reviewerParty/geoCoordinates/@um) [Optional] [Default= DEGD] - nota: when not specified assume decimal DEGREES (XPath HPPreliminaryInformation/selfAssertion/issuerParty/geoCoordinates/@um) [Optional] [Default= DEGD] - nota: when not specified assume decimal DEGREES (XPath</p>

	<p>HPPreliminaryInformation/selfAssertion/externalRefDoc/issuerParty/geoCoordinates/@um) [Optional] [Default= DEGD]</p> <p>- nota: <i>when not specified assume decimal DEGREES</i></p> <p>(XPath HPPreliminaryInformation/SRVheader/senderParty/geoCoordinates/@um) [Optional] [Default= DEGD]</p> <p>- nota: <i>when not specified assume decimal DEGREES</i></p>
uniqueProductID	<p>Unique product identifier. It identifies the product completely, differentiating any variants, sizes, colors, etc. It should be unique throughout the whole value chain. (It can be the GTIN)</p> <p>- base type: string, max length: 80,</p> <p>(XPath HPPreliminaryInformation/assessmentStudyDocument/ProductIdentification/uniqueProductID) 1-1</p> <p>(XPath HPPreliminaryInformation/ProductIdentification/uniqueProductID) 1-1</p>
uri	<p>Uniform Resource Identifier (URI) that identifies the external object as an Internet resource</p> <p>- base type: normalizedString,</p> <p>(XPath HPPreliminaryInformation/selfAssertion/externalRefDoc/attachment/blockChainReference/uri) 1-1</p> <p>- note: <i>reference to the used blockchain (example: url https://etherscan.io/ of ethereum)</i></p> <p>(XPath HPPreliminaryInformation/assessmentStudyDocument/attachment/externalReference/uri) 1-1</p> <p>(XPath HPPreliminaryInformation/certificate/attachment/blockChainReference/uri) 1-1</p> <p>- note: <i>reference to the used blockchain (example: url https://etherscan.io/ of ethereum)</i></p> <p>(XPath HPPreliminaryInformation/assessmentStudyDocument/attachment/blockChainReference/uri) 1-1</p> <p>- note: <i>reference to the used blockchain (example: url https://etherscan.io/ of ethereum)</i></p> <p>(XPath HPPreliminaryInformation/certificate/attachment/externalReference/uri) 1-1</p> <p>(XPath HPPreliminaryInformation/selfAssertion/externalRefDoc/attachment/externalReference/uri) 1-1</p>
@useProfile	<p>use profile to which the present document is compliant if it was agreed by the parties. It is suggested a URI with reference to the firms or the URL of the profile.</p> <p>- base type: string,</p> <p>(XPath HPPreliminaryInformation/@useProfile) [Optional]</p>
@validationMethod	<p>type of method used to validate the quantity to which it refers. For example, it indicates whether it was measured in the field, estimated indirectly, approved by an expert or taken from the literature</p> <p>- base type: string, cod. table: NT329</p> <p>http://www.ebiz.enea.it/moda-ml/repository/codelist/draft/gc_NT329.xml</p> <p>(XPath HPPreliminaryInformation/productCompos/percCompos/@validationMethod) [Optional]</p>
validityEnd	<p>date by which the validity ends, according to one of the patterns YYYY-MM-DD, YYYY-MM-DD:HH-MM or YYYY-WW.</p> <p>- base type: string,</p> <p>(XPath HPPreliminaryInformation/selfAssertion/validityEnd) 0-1</p> <p>(XPath HPPreliminaryInformation/assessmentStudyDocument/validityEnd) 0-1</p> <p>(XPath HPPreliminaryInformation/selfAssertion/externalRefDoc/validityEnd) 0-1</p> <p>(XPath HPPreliminaryInformation/certificate/validityEnd) 0-1</p>
validityExtensionDate	<p>end date of validity resulting from extension, according to one of the patterns YYYY-MM-DD, YYYY-MM-DD:HH-MM or YYYY-WW.</p> <p>- base type: string,</p> <p>(XPath HPPreliminaryInformation/selfAssertion/validityExtensionDate) 0-1</p> <p>(XPath HPPreliminaryInformation/certificate/validityExtensionDate) 0-1</p>
validityStart	<p>date by which the validity starts, according to one of the patterns YYYY-MM-DD, YYYY-MM-DD:HH-MM or YYYY-WW.</p> <p>- base type: string,</p> <p>(XPath HPPreliminaryInformation/certificate/validityStart) 0-1</p> <p>(XPath HPPreliminaryInformation/selfAssertion/externalRefDoc/validityStart) 0-1</p>

	(XPath HPPreliminaryInformation/assessmentStudyDocument/validityStart) 0-1 (XPath HPPreliminaryInformation/selfAssertion/validityStart) 0-1
variantCode	Code of variant used for fashion product. - base type: string, (XPath HPPreliminaryInformation/ProductIdentification/ garmentCode/garmentCodeB/garmentVariant/variantCode) 1-1 (XPath HPPreliminaryInformation/assessmentStudyDocument/ ProductIdentification/garmentCode/garmentCodeB/garmentVariant/variantCode) 1-1
variantType	Type of variant used for fashion product (examples: 'treatment', 'washing type', 'size class',...) - base type: string, (XPath HPPreliminaryInformation/assessmentStudyDocument/ ProductIdentification/garmentCode/garmentCodeB/garmentVariant/variantType) 1-1 (XPath HPPreliminaryInformation/ProductIdentification/ garmentCode/garmentCodeB/garmentVariant/variantType) 1-1
@version	Dictionary version from which the instance has been created - base type: string, cod. table: NT100 http://www.ebiz.enea.it/moda-ml/repository/codelist/draft/gc_NT100.xml (XPath HPPreliminaryInformation/@version) [Optional] [Default= draft]
xGeoCoord	geographical coordinate x , corresponding to latitude - base type: decimal, (XPath HPPreliminaryInformation/certificate/certifiedParty/geoCoordinates/xGeoCoord) 1-1 (XPath HPPreliminaryInformation/selfAssertion/issuerParty/geoCoordinates/xGeoCoord) 1-1 (XPath HPPreliminaryInformation/SRVheader/receiverParty/geoCoordinates/xGeoCoord) 1-1 (XPath HPPreliminaryInformation/assessmentStudyDocument/reviewerParty/geoCoordinates/xGeoCoord) 1-1 (XPath HPPreliminaryInformation/processStepsList/processStep/activityLocation/geoCoordinates/xGeoCoord) 1-1 (XPath HPPreliminaryInformation/selfAssertion/externalRefDoc/signatureInformation/signatoryParty/geoCoordinates/xGeoCoord) 1-1 (XPath HPPreliminaryInformation/certificate/issuerParty/geoCoordinates/xGeoCoord) 1-1 (XPath HPPreliminaryInformation/assessmentStudyDocument/signatureInformation/signatoryParty/geoCoordinates/xGeoCoord) 1-1 (XPath HPPreliminaryInformation/SRVheader/senderParty/geoCoordinates/xGeoCoord) 1-1 (XPath HPPreliminaryInformation/assessmentStudyDocument/issuerParty/geoCoordinates/xGeoCoord) 1-1 (XPath HPPreliminaryInformation/selfAssertion/externalRefDoc/issuerParty/geoCoordinates/xGeoCoord) 1-1
year	reference year - base type: integer, min inclusive: 1800, max inclusive: 2100, (XPath HPPreliminaryInformation/assessmentStudyDocument/year) 0-1 - note: <i>indicate the year to whom the study is referred</i>
yGeoCoord	geographical coordinate y , corresponding to longitude - base type: decimal, (XPath HPPreliminaryInformation/selfAssertion/externalRefDoc/signatureInformation/signatoryParty/geoCoordinates/yGeoCoord) 1-1 (XPath HPPreliminaryInformation/SRVheader/receiverParty/geoCoordinates/yGeoCoord) 1-1 (XPath HPPreliminaryInformation/certificate/issuerParty/geoCoordinates/yGeoCoord) 1-1 (XPath HPPreliminaryInformation/assessmentStudyDocument/issuerParty/geoCoordinates/yGeoCoord) 1-1 (XPath HPPreliminaryInformation/selfAssertion/externalRefDoc/issuerParty/geoCoordinates/yGeoCoord) 1-1

	<p>(XPath HPPreliminaryInformation/certificate/certifiedParty/geoCoordinates/yGeoCoord) 1-1 (XPath HPPreliminaryInformation/assessmentStudyDocument/reviewerParty/geoCoordinates/yGeoCoord) 1-1 (XPath HPPreliminaryInformation/selfAssertion/issuerParty/geoCoordinates/yGeoCoord) 1-1 (XPath HPPreliminaryInformation/processStepsList/processStep/activityLocation/geoCoordinates/yGeoCoord) 1-1 (XPath HPPreliminaryInformation/SRVheader/senderParty/geoCoordinates/yGeoCoord) 1-1 (XPath HPPreliminaryInformation/assessmentStudyDocument/signatureInformation/signatoryParty/geoCoordinates/yGeoCoord) 1-1</p>
zGeoCoord	<p>geographical coordinate z , corresponding to altitude - base type: decimal, (XPath HPPreliminaryInformation/assessmentStudyDocument/reviewerParty/geoCoordinates/zGeoCoord) 0-1 - note: <i>altitude might be omitted</i> (XPath HPPreliminaryInformation/processStepsList/processStep/activityLocation/geoCoordinates/zGeoCoord) 0-1 - note: <i>altitude might be omitted</i> (XPath HPPreliminaryInformation/selfAssertion/externalRefDoc/signatureInformation/signatoryParty/geoCoordinates/zGeoCoord) 0-1 - note: <i>altitude might be omitted</i> (XPath HPPreliminaryInformation/SRVheader/receiverParty/geoCoordinates/zGeoCoord) 0-1 - note: <i>altitude might be omitted</i> (XPath HPPreliminaryInformation/certificate/certifiedParty/geoCoordinates/zGeoCoord) 0-1 - note: <i>altitude might be omitted</i> (XPath HPPreliminaryInformation/assessmentStudyDocument/issuerParty/geoCoordinates/zGeoCoord) 0-1 - note: <i>altitude might be omitted</i> (XPath HPPreliminaryInformation/SRVheader/senderParty/geoCoordinates/zGeoCoord) 0-1 - note: <i>altitude might be omitted</i> (XPath HPPreliminaryInformation/selfAssertion/externalRefDoc/issuerParty/geoCoordinates/zGeoCoord) 0-1 - note: <i>altitude might be omitted</i> (XPath HPPreliminaryInformation/selfAssertion/issuerParty/geoCoordinates/zGeoCoord) 0-1 - note: <i>altitude might be omitted</i> (XPath HPPreliminaryInformation/certificate/issuerParty/geoCoordinates/zGeoCoord) 0-1 - note: <i>altitude might be omitted</i> (XPath HPPreliminaryInformation/assessmentStudyDocument/signatureInformation/signatoryParty/geoCoordinates/zGeoCoord) 0-1 - note: <i>altitude might be omitted</i></p>

2.3 Suggested best practices

**HPPreliminaryInformation/certificate/attachment/
externalReference/mimeType** (mime type of the external object)

Use coding from IANA <http://www.iana.org/assignments/media-types/media-types.xml>

HPPreliminaryInformation/selfAssertion/externalRefDoc/attachment/externalReference/mimeType (mime type of the external object)

Use coding from IANA <http://www.iana.org/assignments/media-types/media-types.xml>

**HPPreliminaryInformation/assessmentStudyDocument/
attachment/externalReference/mimeType** (mime type of the external object)

Use coding from IANA <http://www.iana.org/assignments/media-types/media-types.xml>

2.4 Enumeration tables

List of enumeration tables used in the XML document. You can find all the tables with the corresponding codes at:
<http://www.ebiz.enea.it/eBIZ/imple/eBIZTCU-draft.asp?lingua=en&pag=6>

NT100 - eBIZ TCFUpstream version
NT2 - third party qualifier
NT201 - entity type
NT29 - format of a date
NT3 - issuer of the identifier (or identification system) of a location.
NT311 - information disclosure level
NT312 - storage action
NT313 - status of the document
NT323 - category of the object of a declaration
NT329 - type of validation method of the value
NT333 - type of hashing algorithm
NT6 - coding system owner/issuer
NT60 - language, codes from ISO 639-1 (subset)
NT7 - unit of measure
T10 - ISO3166 - Country
T19 - fibre type
T21 - type of document
T302 - type of object
T305 - table of manufacturing operation types
T306 - material circularity attribute
T307 - recycling process method
T44 - additional code type
T48 - garment part type
TRK01 - list of available services
TRK02 - list of services functions

(the most relevant tables are detailed in the following Annexes too)

ACKNOWLEDGEMENT



This action is part of the TRICK project, which has received funding from Horizon 2020 research and innovation programme under grant agreement No. 958352 of the European Union.

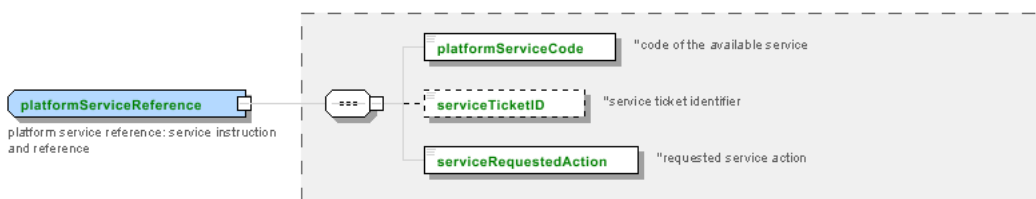
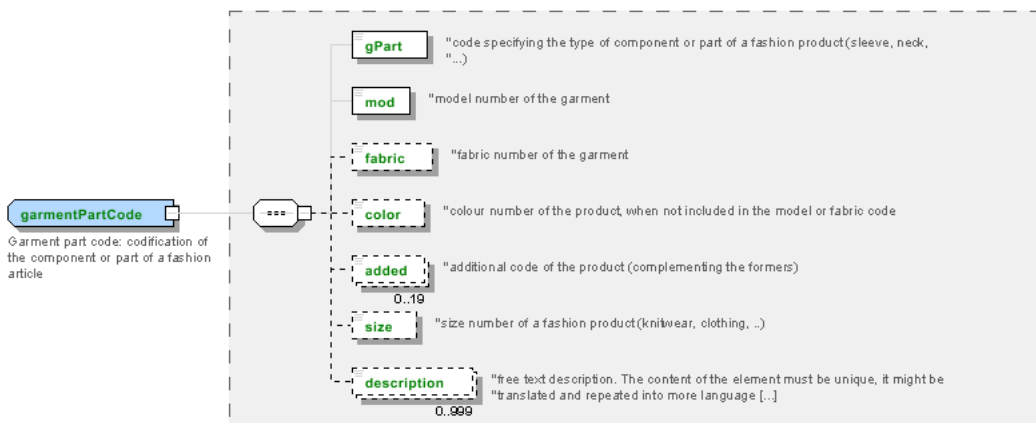
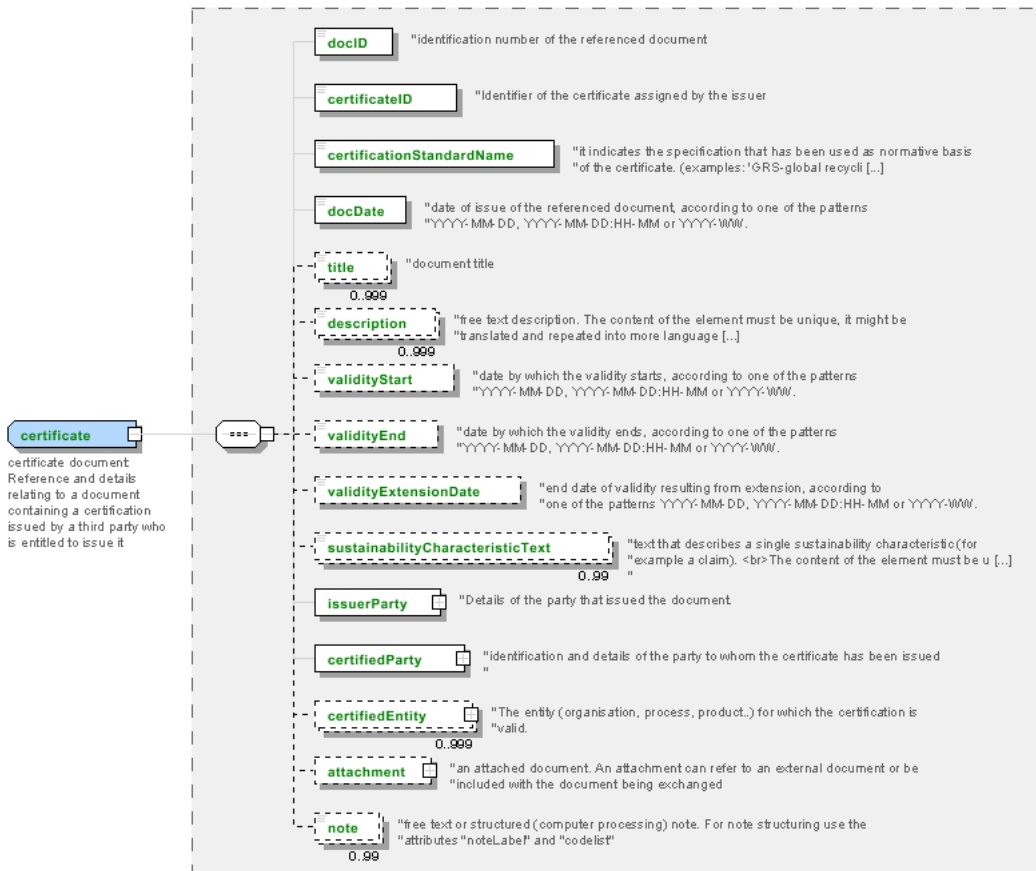
DISCLAIMER

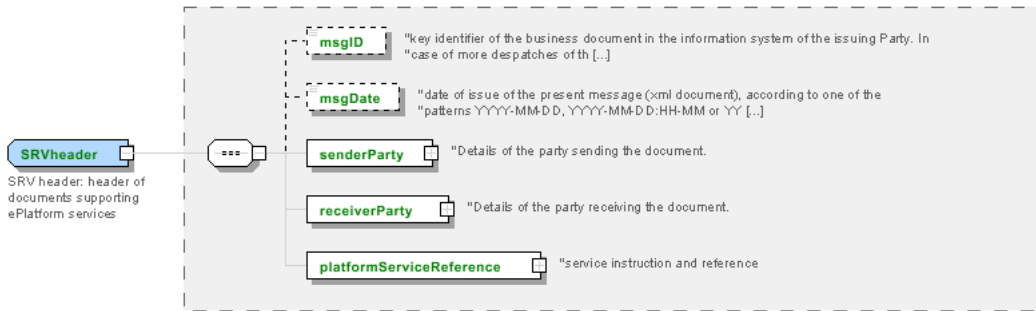
The content of this document represents the views of the authors only and is their sole responsibility; it cannot be considered to reflect the views of the European Commission or any other body of the European Union.

The European Commission does not accept any responsibility for use that may be made of the information it contains.

Annex A

Representative images of the principal complex elements' structure.





Annex B

NT100 - eBIZ TCFUpstream version

dictionary version

Agency name: eBIZ

Decoding table: NT100

File codes list (Generic code): http://www.ebiz.enea.it/moda-ml/repository/codelist/draft/gc_NT100.xml

Code	Description	Adoption note	Date of insertion
2013-1	v2013-1		01/07/2013
2018-1	v2018-1		04/11/2018
draft	draft		08/09/2017

NT2 - third party qualifier

Third Party role qualifier

Agency name: eBIZ

Decoding table: NT2

File codes list (Generic code): http://www.ebiz.enea.it/moda-ml/repository/codelist/draft/gc_NT2.xml

Code	Description	Adoption note	Date of insertion
AG	Sales Agent		
AU	Auditor		08/04/2019
BU	Buyer		13/06/2022
CE	Certification authority		08/04/2019
CM	Commissioner		13/06/2022
CO	Quality Controller		
CU	Customs authority		13/06/2022
DC	Response to		
DF	Invoicee		
DI	Copy to (CC)		28/10/2014
DM	Consignee		
DP	Consignment address (Delivery Party)		
EX	Expert		13/06/2022
IM	Importer		
OR	Originator		10/09/2014
SC	Sub contractor		10/04/2019
SM	Service/ePlatform manager		08/04/2019

SP	Forwarder		
SU	Supplier		13/06/2022
TL	Test or analysis laboratory		13/06/2022
TX	Tax Representative		

NT201 - entity type

indicates the type of entity to which we refer

Agency name: eBIZ for TRICK

Decoding table: NT201

File codes list (Generic code): http://www.ebiz.enea.it/moda-ml/repository/codelist/draft/gc_NT201.xml

Code	Description	Adoption note	Date of insertion
FAC	Facility		03/06/2022
INS	Single product instance		03/06/2022
LOT	Lot		03/06/2022
ORG	Organisation		03/06/2022
PRC	Production process		03/06/2022
PRD	Product		03/06/2022
PRO	Organisational procedure		03/06/2022
SHP	Shipment		25/04/2023

NT29 - format of a date

format used for the date

Agency name: eBIZ

Decoding table: NT29

File codes list (Generic code): http://www.ebiz.enea.it/moda-ml/repository/codelist/draft/gc_NT29.xml

Code	Description	Adoption note	Date of insertion
D	YYYY-MM-DD		
M	YYYY-MM-DD:HH-MM (date and time)		
S	AAAA-MM-GG:HH-MM-SS (date and time with seconds)		13/06/2022
W	YYYY-WW		

NT3 - issuer of the identifier (or identification system) of a location.

List of possible issuers of the identifier (or identification system) of a location.

Agency name: eBIZ

Decoding table: NT3

File codes list (Generic code): http://www.ebiz.enea.it/moda-ml/repository/codelist/draft/gc_NT3.xml

Code	Description	Adoption note	Date of insertion
EN4	GS1-GLN	obsolete	01/07/2013
GLN	GS1-GLN	equivalent to EN4	25/04/2023
MD	mutually agreed		
NCA	National custom authority	identifier of a bonded warehouse assigned by the custom authority	19/05/2023
PLA	Platform	internal coding of the involved platform	14/05/2023
TRI	TRICK		14/05/2023

NT311 - information disclosure level

Agency name: eBIZ for TRICK

Decoding table: NT311

File codes list (Generic code): http://www.ebiz.enea.it/moda-ml/repository/codelist/draft/gc_NT311.xml

Code	Description	Adoption note	Date of insertion
1	public		22/07/2022
2	disclosed to any partner(s) involved in the activity		22/07/2022
3	disclosed to specific category of partner involved in the activity		22/07/2022
4	disclosed upon an explicit authorisation		22/07/2022
9	fully confidential		22/07/2022

NT312 - storage action

indicates how to insert the information to which it refers into an archive, also specifying what should happen to the pre-existing information.

Agency name: eBIZ for TRICK

Decoding table: NT312

File codes list (Generic code): http://www.ebiz.enea.it/moda-ml/repository/codelist/draft/gc_NT312.xml

Code	Description	Adoption note	Date of insertion
AD	add only new elements (without overwriting existing ones)		22/07/2022
DW	delete existing elements and write new data	use this when it is necessary to reset a list of information	22/07/2022
NA	no action required		22/07/2022

W U	add new data and update if necessary the existing ones	usually prefer this; it is necessary when an update of existing information is needed	22/07/2022
--------	--	---	------------

NT313 - status of the document

subset of the values from the United Nations Code List (UNCL) 4405 code list from UNCEFACT

Agency name: eBIZ for TRICK (elaboration on UNECE)

Decoding table: NT313

File codes list (Generic code): http://www.ebiz.enea.it/moda-ml/repository/codelist/draft/gc_NT313.xml

Other link: <https://service.unece.org/trade/untdid/d21b/tred/tred4405.htm#>

Code	Description	Adoption note	Date of insertion
112	Incomplete		22/07/2022
21	Temporary		22/07/2022
39	Approved		22/07/2022
40	Withdrawn		22/07/2022
41	Rejected		22/07/2022
45	No status		22/07/2022
67	Preliminary		22/07/2022
70	Issued		22/07/2022
73	Confirmed (by reviewer)		30/08/2022
74	Expiry date exceeded		22/07/2022
97	Pending		22/07/2022

NT323 - category of the object of a declaration

Agency name: eBIZ

Decoding table: NT323

File codes list (Generic code): http://www.ebiz.enea.it/moda-ml/repository/codelist/draft/gc_NT323.xml

Code	Description	Adoption note	Date of insertion
ENV	environment (GEG, energy, water..)		30/08/2022
ETH	ethic and social		30/08/2022
FIB	fibre content		30/08/2022
HLT	health and chemicals		30/08/2022
LOC	locations		30/08/2022
ORG	origin		30/08/2022
OTH	other		30/08/2022
PER	performance		30/08/2022

PRO	processes		30/08/2022
REC	recycle and circularity		30/08/2022

NT329 - type of validation method of the value

indicates the type of method used to validation and calculate the quantity to which it refers; used to express the data faithfulness

Agency name: eBIZ

Decoding table: NT329

File codes list (Generic code): http://www.ebiz.enea.it/moda-ml/repository/codelist/draft/gc_NT329.xml

Code	Description	Adoption note	Date of insertion
CER	third party certification		11/06/2023
EST	estimate		12/05/2023
EXP	confirmed by an expert		19/05/2023
LAB	laboratory test		11/06/2023
LIT	literature	refer to a literature analysis outcome	12/05/2023
MON	monitoring	refer to continuous measurement in field	12/05/2023
REV	confirmed by review		11/06/2023
SAM	sampling	refer to a sample measurement in field	12/05/2023
SUP	supplier declaration		11/06/2023

NT333 - type of hashing algorithm

type of hashing algorithm

Decoding table: NT333

File codes list (Generic code): http://www.ebiz.enea.it/moda-ml/repository/codelist/draft/gc_NT333.xml

Code	Description	Adoption note	Date of insertion
ADLER32	ADLER32		26/05/2023
HMAC	HMAC		26/05/2023
MD2	MD2		26/05/2023
MD4	MD4		26/05/2023
MD5	MD5		26/05/2023
MDC-2	MDC-2		26/05/2023
PANAMA	PANAMA		26/05/2023
RIPEMD-160	RIPEMD-160		26/05/2023
SHA-1	SHA-1		26/05/2023
SHA-2 256	SHA-2 256		26/05/2023

SHA-2 384	SHA-2 384		26/05/2023
SHA-2 512	SHA-2 512		26/05/2023
TIGER	TIGER		26/05/2023

NT6 - coding system owner/issuer

code specifying the organisation who has created or owns the registers of the present coding or numbering system

Agency name: eBIZ

Decoding table: NT6

File codes list (Generic code): http://www.ebiz.enea.it/moda-ml/repository/codelist/draft/gc_NT6.xml

Code	Description	Adoption note	Date of insertion
CBR	National customs brokers registry		12/06/2023
CL	Customer/buyer		
CO	Quality Controller		
DU	D-U-N-S registry (Data Universal Numbering System)		04/05/2023
EB	eBIZ	replaces 'ML'	18/03/2019
EN	GS1 (ex-EAN International)		
EO	Registro EORI (Economic Operators Registration and Identification number)		04/03/2023
ES	e-Stockflow	DEPRECATED	
FO	Supplier		
GS	GS1		01/07/2013
MF	national taxation authority (i.e. VAT codes registry)		
ML	Moda-ML	DEPRECATED	
PL	Application Platform		13/06/2022
REX	Registered Exporter system (REX)		19/05/2023
SP	Service Provider		
SU	Enterprise Identification Number UID	Only switzerland	04/03/2023

NT60 - language, codes from ISO 639-1 (subset)

Agency name: eBIZ / ISO

Decoding table: NT60

File codes list (Generic code): http://www.ebiz.enea.it/moda-ml/repository/codelist/draft/gc_NT60.xml

Code	Description	Adoption note	Date of insertion
af	Afrikaans		31/01/2019
ar	Arabic		31/01/2019

be	Belarusian		31/01/2019
bg	Bulgarian		31/01/2019
bn	Bengali		31/01/2019
bo	Tibetan		31/01/2019
bs	Bosnian		31/01/2019
ca	Catalan, Valencian		31/01/2019
cs	Czech		31/01/2019
da	Danish		31/01/2019
de	German		31/01/2019
el	Greek, Modern (1453-)		31/01/2019
en	English		31/01/2019
eo	Esperanto		31/01/2019
es	Spanish, Castilian		31/01/2019
et	Estonian		31/01/2019
eu	Basque		31/01/2019
F	Female		15/04/2019
fa	Persian		31/01/2019
fi	Finnish		31/01/2019
fr	French		31/01/2019
ga	Irish		31/01/2019
gd	Gaelic, Scottish Gaelic		31/01/2019
gn	Guarani		31/01/2019
he	Hebrew		31/01/2019
hr	Croatian		31/01/2019
ht	Haitian, Haitian Creole		31/01/2019
hu	Hungarian		31/01/2019
hy	Armenian		31/01/2019
ia	Interlingua (International Auxiliary Language Association)		31/01/2019
id	Indonesian		31/01/2019
is	Icelandic		31/01/2019
it	Italian		31/01/2019
ja	Japanese		31/01/2019
jv	Javanese		31/01/2019
ka	Georgian		31/01/2019
km	Central Khmer		31/01/2019
ko	Korean		31/01/2019
ku	Kurdish		31/01/2019
lb	Luxembourgish, Letzeburgesch		31/01/2019

lo	Lao		31/01/2019
lt	Lithuanian		31/01/2019
lv	Latvian		31/01/2019
mg	Malagasy		31/01/2019
mk	Macedonian		31/01/2019
mn	Mongolian		31/01/2019
mt	Maltese		31/01/2019
nl	Dutch, Flemish		31/01/2019
no	Norwegian		31/01/2019
pl	Polish		31/01/2019
pt	Portuguese		31/01/2019
ro	Romanian, Moldavian, Moldovan		31/01/2019
ru	Russian		31/01/2019
se	Northern Sami		31/01/2019
sk	Slovak		31/01/2019
sl	Slovenian		31/01/2019
sm	Samoan		31/01/2019
so	Somali		31/01/2019
sq	Albanian		31/01/2019
sr	Serbian		31/01/2019
sv	Swedish		31/01/2019
sw	Swahili		31/01/2019
ta	Tamil		31/01/2019
th	Thai		31/01/2019
tr	Turkish		31/01/2019
uk	Ukrainian		31/01/2019
ur	Urdu		31/01/2019
uz	Uzbek		31/01/2019
vi	Vietnamese		31/01/2019
zh	Chinese		31/01/2019

NT7 - unit of measure

specification of the unit of measure, it is a sub set of table Unit of Measure Code - UN/ECE REC 20 delivered by United Nations Economic Commission for Europe (UN/ECE)

Agency name: eBIZ / UN/ECE

Decoding table: NT7

File codes list (Generic code): http://www.ebiz.enea.it/moda-ml/repository/codelist/draft/gc_NT7.xml

Other link: <http://docs.oasis-open.org/ubl/os-UBL-2.1/cl/gc/default/UnitOfMeasureCode-2.1.gc#>

Code	Description	Adoption note	Date of insertion
CMK	square centimetre		20/12/2017
CMQ	cubic centimetre		20/12/2017
CMT	centimetre		
CNE	centiNewton		
CO2TON	ton of CO2		10/09/2014
COUPLES	couples		
DAY	day		22/08/2022
DEGD	decimal degrees		04/07/2022
DEGMS	degrees with minutes and seconds		01/07/2022
DMQ	cubic decimetre		
E37	pixel		11/04/2018
GRM	gram		
HUR	hour		
INH	inch		
KGM	kilogram		
KMT	kilometer		
KWH	kilowatthours		10/09/2014
LBR	pound		
MCG	microgram		23/08/2022
MG	milligram		23/08/2022
MIN	minute		
MMK	square millimetre		20/12/2017
MONTH	month		22/08/2022
MSEC	millisecond (time)		22/08/2022
MTK	square metre		20/12/2017
MTQ	cubic metre		
MTR	metre		
NMB	numero		
ONZ	ounce		
P1	percent		
PPM	parts per milion		
PZ	piece		
RPM	rounds per metre		
SEC	second (time)		22/08/2022
YEAR	year		22/08/2022
YRD	yard		

T10 - ISO3166 - Country

code of the nation

Agency name: ISO

Decoding table: T10

File codes list (Generic code): http://www.ebiz.enea.it/moda-ml/repository/codelist/draft/gc_T10.xml

Table not printed: there are 240 elements, more than the maximum specified for printing: 99.

T19 - fibre type

type of fibre used in a textile product

Agency name: eBIZ

Decoding table: T19

File codes list (Generic code): http://www.ebiz.enea.it/moda-ml/repository/codelist/draft/gc_T19.xml

Code	Description	Adoption note	Date of insertion
AB	abaca		20/08/2018
AC	acetate		
AF	other fibres		
AG	alginic fibre		
AL	alfa		20/08/2018
AR	aramid		25/04/2022
CA	hemp		
CC	coir (coconut)		20/08/2018
CL	chlorofibre		
CO	cotton		
CU	cuprous		
EA	elastan		
EF	elastolefin		25/04/2022
EL	Elastodiene		20/08/2018
EM	elastomultiester		25/04/2022
FL	fluorofibre		
GI	broom		20/08/2018
GL	textile glass		
HA	hair		20/08/2018
HE	henequen		20/08/2018
HL	mixed linen		
JU	jute		

KE	kenaf		20/08/2018
KP	kapoc		20/08/2018
LI	linen		
LY	lyocell		20/08/2018
MA	modacrylic		
MD	modal		
ME	metallized		
MG	maguey		20/08/2018
MM	melamine		25/04/2022
PA	polyamide		
PB	polyureic		
PC	acrylic		
PE	polyethylene		
PI	paper		20/08/2018
PL	polyester		
PM	polyimide		
PO	polilactyd		25/04/2022
PP	polypropylene		
PR	proteic		
PU	polyurethane		
RA	ramie		20/08/2018
SE	silk		
SI	sisal		20/08/2018
SN	sun		20/08/2018
TA	triacetate		
TR	textile residues or unspecified composition		20/08/2018
TV	trivinyll		
VI	viscose		
VY	vinylal		
WA	angora		
WB	beaver		20/08/2018
WC	cashgora		
WG	vicuna		
WK	camel		
WL	llama		
WM	mohair		
WN	lapin		20/08/2018
WO	wool		

WP	alpaca		
WS	cashmere		
WT	Oteer		20/08/2018
WU	guanaco		
WV	virgin wool		
WY	yack		

T21 - type of document

type or class to which the referenced document belongs

Agency name: eBIZ

Decoding table: T21

File codes list (Generic code): http://www.ebiz.enea.it/moda-ml/repository/codelist/draft/gc_T21.xml

Code	Description	Adoption note	Date of insertion
BIL	Bill of lading		07/03/2023
BOR	Blanket order		01/02/2018
CAT	Price catalogue - tech sheet		
CEO	Certificate of origin		13/04/2018
CER	Certificate		13/04/2018
CMR	CMR consignment note		07/03/2023
COC	Colour card		
CRN	Credit note		08/09/2017
CTO	Checking order		01/07/2013
CTR	Contract		
CXF	CxF3 file		01/07/2013
DAD	Darn order		
DDT	Delivery note (transport document)		
DEA	Despatch advise		
DER	Despatch request		
DR	Document Request		02/12/2014
EAD	Export Accompanying Document	adopted by European customs	12/05/2023
ECMR	electronic CMR consignment note		07/03/2023
ECUS	EXPORT Custom Declaration		07/03/2023
FOR	Forecast		02/12/2014
GSO	Garment stock offer		
GSX	Garment stock offer change		
ICUS	IMPORT Custom Declaration		07/03/2023

INV	Invoice		
KCC	Knitting-Clothing Commission Order		02/12/2014
KCI	Garment in Work Inventory Report		02/12/2014
LCA	LCA study		28/08/2022
LCAD	LCA study dataset		28/08/2022
M2M	Made to Measure Production Order		02/12/2014
MAS	Master marker		
MCI	Visual merchandising instruction		13/04/2018
OCH	Order change		
OFF	Offer		
ORD	Purchase order		
ORP	Order response		
OSR	order status request		
OSS	Offer status		02/12/2014
OST	Order status		
OUR	our reference		
PCO	Preferential certificate of origin		07/03/2023
PEF	PEF study		28/08/2022
PEFD	PEF study dataset		28/08/2022
PEFP	PEF environmental profile		07/03/2023
QR	Quality Report		02/12/2014
RAI	Raw Material in Work Inventory Report		02/12/2014
RDC	Raw dyeing commission order		
RDH	Raw dyeing order change		
RDR	Raw dyeing order response		
REA	Receiving advise		
REQ	Request for Offer		
RET	Return		02/12/2014
RSC	Spinning commission order		
RSH	Spinning order change		
RSR	Spinning order response		
SAD	Single Administrative Document	adopted by European customs	12/05/2023
SCL	Process sheet		
SDE	Self-declaration		07/03/2023
SDS	SDS - Safety data sheet		07/03/2023
SLCA	S-LCA Study		07/03/2023
SLCAD	S-LCA Study documentation		07/03/2023
TFC	Textile dyeing-finishing commission order		

TFX	Textile Dyeing-Finishing Order Change		02/12/2014
TPC	Textile printing commission order		
TPX	Textile Printing Order Change		02/12/2014
TWI	Textile in work inventory		
VMI	visual merchandising instructions		01/02/2018
WAC	Warping commission order		
WAYB	Waybill		07/03/2023
WEC	Weaving commission order		
YDC	Yarn dyeing commission order		
YDH	Yarn dyeing order change		
YDR	Yarn dyeing order response		
YTC	Twisting commission order		
YWI	Yarn in work inventory		

T302 - type of object

indicates the type of object. Indicates the nature of a traceable object (for example a truck load).

Agency name: eBIZ for TRICK

Decoding table: T302

File codes list (Generic code): http://www.ebiz.enea.it/moda-ml/repository/codelist/draft/gc_T302.xml

Code	Description	Adoption note	Date of insertion
ACCE	accessory		13/06/2022
CFBR	fiber (combed)		01/09/2022
FABR	fabric (finished) (non knitted)	after any finishing or dyeing or darning	01/09/2022
FIL	filament		01/09/2022
GARM	garment (finished)	garment ready fo use (sales, rent or anything else)	13/06/2022
GRCO	garment component		13/06/2022
KNFA	knitted fabric (finished)		01/09/2022
LFIB	lose fibers		01/09/2022
PFBR	fiber (processed)		01/07/2022
POLY	polymer		04/09/2022
PPFB	fiber (preprocessed)	might include washed fiber or dyed	01/09/2022
RAFA	fabric (non knitted) (raw)		01/09/2022
RAFI	fiber (raw)	before any kind of treatment or preprocessing	01/09/2022
RAGA	garment (unfinished)		01/09/2022
RAKF	knitted fabric (unfinished)		01/09/2022
RAYA	yarn (unfinished)		13/06/2022

TOPS	tops		23/03/2023
TRIM	trimming		01/09/2022
WACC	waste accessories		01/09/2022
WFFP	waste fabric from fabric production		01/09/2022
WFGP	waste fabric from garment production		01/09/2022
WFYP	waste fibre from yarn production		01/09/2022
WGGP	waste garment from garment production		01/09/2022
WPAC	waste accessories (Post-Consumer)		01/09/2022
WPFB	waste fabric (Post-Consumer)		01/09/2022
WPGR	waste garment (Post-Consumer)		01/09/2022
WPTR	waste trimming (Post-Consumer)		01/09/2022
WTRM	waste trimming		01/09/2022
WYFP	waste yarn from fabric production		01/09/2022
WYYP	waste yarn from yarn production		01/09/2022
YARN	yarn (finished)		13/06/2022

T305 - table of manufacturing operation types

Used in documents related to traceability and transparency to describe treatments and operations

Agency name: eBIZ for TRICK

Decoding table: T305

File codes list (Generic code): http://www.ebiz.enea.it/moda-ml/repository/codelist/draft/gc_T305.xml

Code	Description	Adoption note	Date of insertion
0	Fibres production		05/09/2022
0.1	Animal fibres production	NACE equivalent: 01.4 Animal production	05/09/2022
0.2	Plant fibres production	NACE equivalent: 01.16 Growing of fibre crops	05/09/2022
0.3	Production of man-made filaments and fibres	NACE equivalent: 20.60 Manufacture of man-made fibres	05/09/2022
0.3.1	Raw materials for man-made filaments and fibres	NACE equivalent: 20.60 Manufacture of man-made fibres	05/09/2022
0.3.2	Extruders	NACE equivalent: 20.60 Manufacture of man-made fibres	05/09/2022
1	Yarn manufacture	NACE equivalent: 13.10 Preparation and spinning of textile fibres	05/09/2022
1.1	Spinning Preparation for cotton fibers	NACE equivalent: 13.10 Preparation and spinning of textile fibres	05/09/2022
1.1.1	Opening for cotton	NACE equivalent: 13.10 Preparation and spinning	05/09/2022

		of textile fibres	022
1.1.2	Cards	NACE equivalent: 13.10 Preparation and spinning of textile fibres	05/09/2022
1.1.3	Drawing machines for cotton	NACE equivalent: 13.10 Preparation and spinning of textile fibres	05/09/2022
1.1.4	Lap winders	NACE equivalent: 13.10 Preparation and spinning of textile fibres	05/09/2022
1.1.5	Combing machines for cotton	NACE equivalent: 13.10 Preparation and spinning of textile fibres	05/09/2022
1.1.6	Roving frames	NACE equivalent: 13.10 Preparation and spinning of textile fibres	05/09/2022
1.2	Spinning Preparation for wool fibers	NACE equivalent: 13.10 Preparation and spinning of textile fibres	05/09/2022
1.2.1	Opening lines for raw wool	NACE equivalent: 13.10 Preparation and spinning of textile fibres	05/09/2022
1.2.1 0	Back washing machine	NACE equivalent: 13.10 Preparation and spinning of textile fibres	05/09/2022
1.2.1 1	Finishers	NACE equivalent: 13.10 Preparation and spinning of textile fibres	05/09/2022
1.2.1 2	Roving frames for worsted yarn	NACE equivalent: 13.10 Preparation and spinning of textile fibres	05/09/2022
1.2.2	Raw wool scouring lines	NACE equivalent: 13.10 Preparation and spinning of textile fibres	05/09/2022
1.2.3	Carbonising lines	NACE equivalent: 13.10 Preparation and spinning of textile fibres	05/09/2022
1.2.4	Opening for wool	NACE equivalent: 13.10 Preparation and spinning of textile fibres	05/09/2022
1.2.5	Worsted cards	NACE equivalent: 13.10 Preparation and spinning of textile fibres	05/09/2022
1.2.6	Semi-worsted cards	NACE equivalent: 13.10 Preparation and spinning of textile fibres	05/09/2022
1.2.7	Woollen cards	NACE equivalent: 13.10 Preparation and spinning of textile fibres	05/09/2022
1.2.8	Drawing machines for wool	NACE equivalent: 13.10 Preparation and spinning of textile fibres	05/09/2022
1.2.9	Combing machines for wool	NACE equivalent: 13.10 Preparation and spinning of textile fibres	05/09/2022
1.3	Spinning preparation for blended fibres	NACE equivalent: 13.10 Preparation and spinning of textile fibres	05/09/2022
1.3.1	Blending	NACE equivalent: 13.10 Preparation and spinning of textile fibres	05/09/2022
1.3.2	Mechanical Blending	NACE equivalent: 13.10 Preparation and spinning of textile fibres	05/09/2022
1.4	Spinning	NACE equivalent: 13.10 Preparation and spinning of textile fibres	05/09/2022
1.4.1	Mechanical Spinning	NACE equivalent: 13.10 Preparation and spinning of textile fibres	05/09/2022
1.4.1.1	Ring-spinning	NACE equivalent: 13.10 Preparation and spinning	05/09/2

1		of textile fibres	022
1.4.1. 2	Compact spinning	NACE equivalent: 13.10 Preparation and spinning of textile fibres	05/09/2 022
1.4.1. 3	Rotor spinning	NACE equivalent: 13.10 Preparation and spinning of textile fibres	05/09/2 022
1.4.1. 4	Air-jet spinning	NACE equivalent: 13.10 Preparation and spinning of textile fibres	05/09/2 022
1.4.1. 99	Other Spinning machines	NACE equivalent: 13.10 Preparation and spinning of textile fibres	05/09/2 022
1.4.2	Thermo-mechanical Filament spinning	NACE equivalent: 13.10 Preparation and spinning of textile fibres	05/09/2 022
1.4.2. 1	Melt spinning	NACE equivalent: 13.10 Preparation and spinning of textile fibres	05/09/2 022
1.4.3	Chemical -Cotton Filament Spinning	NACE equivalent: 13.10 Preparation and spinning of textile fibres	05/09/2 022
1.4.3. 1	Blending with wood pulp	NACE equivalent: 13.10 Preparation and spinning of textile fibres	05/09/2 022
1.4.3. 2	Drying of pulp sheets	NACE equivalent: 13.10 Preparation and spinning of textile fibres	05/09/2 022
1.4.3. 3	(Dry-jet) wet spinning	NACE equivalent: 13.10 Preparation and spinning of textile fibres	05/09/2 022
1.5	Winding, reeling and covering	NACE equivalent: 13.10 Preparation and spinning of textile fibres	05/09/2 022
1.5.1	Winding machines	NACE equivalent: 13.10 Preparation and spinning of textile fibres	05/09/2 022
1.5.2	Reeling machines	NACE equivalent: 13.10 Preparation and spinning of textile fibres	05/09/2 022
1.5.3	Covering machines	NACE equivalent: 13.10 Preparation and spinning of textile fibres	05/09/2 022
1.6	Yarn finishing	NACE equivalent: 13.10 Preparation and spinning of textile fibres	05/09/2 022
1.6.1	Yarn steaming, setting, moistening and coating	NACE equivalent: 13.10 Preparation and spinning of textile fibres	05/09/2 022
1.6.1. 1	Autoclaves for steaming	NACE equivalent: 13.10 Preparation and spinning of textile fibres	05/09/2 022
1.6.1. 2	Heat-setting machines	NACE equivalent: 13.10 Preparation and spinning of textile fibres	05/09/2 022
1.6.1. 3	Moistening machines	NACE equivalent: 13.10 Preparation and spinning of textile fibres	05/09/2 022
1.6.2	Yarn coating machines	NACE equivalent: 13.10 Preparation and spinning of textile fibres	05/09/2 022
1.6.2. 1	Plasma treatment	NACE equivalent: 13.10 Preparation and spinning of textile fibres	05/09/2 022
1.6.3	Yarn Mercerising	NACE equivalent: 13.10 Preparation and spinning of textile fibres	05/09/2 022
1.6.4	Yarn washing	NACE equivalent: 13.10 Preparation and spinning of textile fibres	05/09/2 022
1.6.5	Yarn continuous dyeing	NACE equivalent: 13.10 Preparation and spinning	05/09/2

		of textile fibres	022
1.6.6	Hank	NACE equivalent: 13.10 Preparation and spinning of textile fibres	05/09/2022
1.6.7	Yarn Dryers	NACE equivalent: 13.10 Preparation and spinning of textile fibres	05/09/2022
1.7	Texturing, bulking and crimping	NACE equivalent: 13.10 Preparation and spinning of textile fibres	05/09/2022
1.7.1	Texturing machines	NACE equivalent: 13.10 Preparation and spinning of textile fibres	05/09/2022
1.7.2	Bulking and crimping machines	NACE equivalent: 13.10 Preparation and spinning of textile fibres	05/09/2022
1.8	Doubling and twisting	NACE equivalent: 13.10 Preparation and spinning of textile fibres	05/09/2022
1.8.1	Doubling machines	NACE equivalent: 13.10 Preparation and spinning of textile fibres	05/09/2022
1.8.2	Twisting machines	NACE equivalent: 13.10 Preparation and spinning of textile fibres	05/09/2022
2	Fabric manufacture	NACE equivalent: 13. Manufacture of textiles	05/09/2022
2.1	Weaving preparation	NACE equivalent: 13.20 Weaving of textiles	05/09/2022
2.1.1	Sectional warping	NACE equivalent: 13.20 Weaving of textiles	05/09/2022
2.1.2	Beam warping	NACE equivalent: 13.20 Weaving of textiles	05/09/2022
2.1.3	Draw-warping	NACE equivalent: 13.20 Weaving of textiles	05/09/2022
2.1.4	Beaming machines	NACE equivalent: 13.20 Weaving of textiles	05/09/2022
2.1.5	Sizing/slashing	NACE equivalent: 13.20 Weaving of textiles	05/09/2022
2.1.6	Indigo warp dyeing lines	NACE equivalent: 13.20 Weaving of textiles	05/09/2022
2.1.7	Degumming (of silk)	NACE equivalent: 13.20 Weaving of textiles	05/09/2022
2.2	Weaving	NACE equivalent: 13.20 Weaving of textiles	05/09/2022
2.2.1	Rapier weaving	NACE equivalent: 13.20 Weaving of textiles	05/09/2022
2.2.1.1	Rapier weaving with Jacquard	NACE equivalent: 13.20 Weaving of textiles	05/09/2022
2.2.1.2	Rapier weaving with dobby	NACE equivalent: 13.20 Weaving of textiles	05/09/2022
2.2.2	Projectile weaving	NACE equivalent: 13.20 Weaving of textiles	05/09/2022
2.2.3	Air jet weaving	NACE equivalent: 13.20 Weaving of textiles	05/09/2022
2.2.4	Water jet weaving	NACE equivalent: 13.20 Weaving of textiles	05/09/2022

			022
2.2.5	Shuttle looms	NACE equivalent: 13.20 Weaving of textiles	05/09/2022
2.2.6	Circular weaving	NACE equivalent: 13.20 Weaving of textiles	05/09/2022
2.2.7	Narrow fabrics weaving	NACE equivalent: 13.20 Weaving of textiles	05/09/2022
2.3	Preparation for knitting	NACE equivalent: 13.91 Manufacture of knitted and crocheted fabrics	05/09/2022
2.3.1	Beam warping	NACE equivalent: 13.20 Weaving of textiles	05/09/2022
2.3.2	Sectional warping	NACE equivalent: 13.20 Weaving of textiles	05/09/2022
2.4	Knitting (knitted fabric)	NACE equivalent: 13.91 Manufacture of knitted and crocheted fabrics	05/09/2022
2.4.1	Circular knitting machines	NACE equivalent: 13.91 Manufacture of knitted and crocheted fabrics	05/09/2022
2.4.2	Flat knitting machines	NACE equivalent: 13.91 Manufacture of knitted and crocheted fabrics	05/09/2022
2.4.3	Warp knitting machines	NACE equivalent: 13.91 Manufacture of knitted and crocheted fabrics	05/09/2022
2.4.4	Knitting machines for special purposes	NACE equivalent: 13.91 Manufacture of knitted and crocheted fabrics	05/09/2022
2.99	Other fabric production technologies	NACE equivalent: 13.9 Manufacture of other textiles	05/09/2022
3	Finishing and Dyeing	NACE equivalent: 13.30 Finishing of textiles	05/09/2022
3.1	Pretreatment	NACE equivalent: 13.30 Finishing of textiles	05/09/2022
3.1.1	Carbonising	NACE equivalent: 13.30 Finishing of textiles	05/09/2022
3.1.1.0	Milling/fuling	NACE equivalent: 13.30 Finishing of textiles	05/09/2022
3.1.1.1	Fabric Mercerising	NACE equivalent: 13.30 Finishing of textiles	05/09/2022
3.1.2	Singeing	NACE equivalent: 13.30 Finishing of textiles	05/09/2022
3.1.3	Crabbing	NACE equivalent: 13.30 Finishing of textiles	05/09/2022
3.1.4	Desizing	NACE equivalent: 13.30 Finishing of textiles	05/09/2022
3.1.5	Bleaching batch	NACE equivalent: 13.30 Finishing of textiles	05/09/2022
3.1.6	Continuous Bleaching	NACE equivalent: 13.30 Finishing of textiles	05/09/2022
3.1.7	Rope washing	NACE equivalent: 13.30 Finishing of textiles	05/09/2022
3.1.8	Open-width washing	NACE equivalent: 13.30 Finishing of textiles	05/09/2022

			022
3.1.9	Solvent washing	NACE equivalent: 13.30 Finishing of textiles	05/09/2022
3.2	Dyeing	NACE equivalent: 13.30 Finishing of textiles	05/09/2022
3.2.1	Fibre Dyeing	NACE equivalent: 13.30 Finishing of textiles	05/09/2022
3.2.1.1	Cellulose fiber dyeing	NACE equivalent: 13.30 Finishing of textiles	05/09/2022
3.2.1.2	Protein fibers dyeing	NACE equivalent: 13.30 Finishing of textiles	05/09/2022
3.2.1.3	Synthetic fibers dyeing	NACE equivalent: 13.30 Finishing of textiles	05/09/2022
3.2.2	Fabric continuous dyeing	NACE equivalent: 13.30 Finishing of textiles	05/09/2022
3.2.3	Autoclaves	NACE equivalent: 13.30 Finishing of textiles	05/09/2022
3.2.4	Jet	NACE equivalent: 13.30 Finishing of textiles	05/09/2022
3.2.5	Overflows	NACE equivalent: 13.30 Finishing of textiles	05/09/2022
3.2.6	Winch becks	NACE equivalent: 13.30 Finishing of textiles	05/09/2022
3.2.7	Jiggers	NACE equivalent: 13.30 Finishing of textiles	05/09/2022
3.2.99	Other dyeing machines	NACE equivalent: 13.30 Finishing of textiles	05/09/2022
3.3	Water extraction and drying	NACE equivalent: 13.30 Finishing of textiles	05/09/2022
3.3.1	Centrifugal hydro-extractors	NACE equivalent: 13.30 Finishing of textiles	05/09/2022
3.3.2	Stenter	NACE equivalent: 13.30 Finishing of textiles	05/09/2022
3.3.3	Fabric Dryers	NACE equivalent: 13.30 Finishing of textiles	05/09/2022
3.3.4	Other Dryers	NACE equivalent: 13.30 Finishing of textiles	05/09/2022
3.3.5	Tumblers	NACE equivalent: 13.30 Finishing of textiles	05/09/2022
3.4	Finishing machines	NACE equivalent: 13.30 Finishing of textiles	05/09/2022
3.4.1	Mechanical finishing	NACE equivalent: 13.30 Finishing of textiles	05/09/2022
3.4.10	Water-proof finishing	NACE equivalent: 13.30 Finishing of textiles	05/09/2022
3.4.11	Crease-proof finishing	NACE equivalent: 13.30 Finishing of textiles	05/09/2022
3.4.1	Stain-proof finishing	NACE equivalent: 13.30 Finishing of textiles	05/09/2022

2			022
3.4.1 3	Flame-resistance finishing	NACE equivalent: 13.30 Finishing of textiles	05/09/2 022
3.4.1 4	UV-protection finishing	NACE equivalent: 13.30 Finishing of textiles	05/09/2 022
3.4.2	Decatising	NACE equivalent: 13.30 Finishing of textiles	05/09/2 022
3.4.3	Calenders	NACE equivalent: 13.30 Finishing of textiles	05/09/2 022
3.4.4	Singeing machines	NACE equivalent: 13.30 Finishing of textiles	05/09/2 022
3.4.5	Knitwear ironing presses	NACE equivalent: 13.30 Finishing of textiles	05/09/2 022
3.4.6	Tumblers	NACE equivalent: 13.30 Finishing of textiles	05/09/2 022
3.4.7	Sanfor	NACE equivalent: 13.30 Finishing of textiles	05/09/2 022
3.4.8	Moth-proof finishing	NACE equivalent: 13.30 Finishing of textiles	05/09/2 022
3.4.9	Shrink-proof finishing	NACE equivalent: 13.30 Finishing of textiles	05/09/2 022
3.4.9 9	Other finishing machines	NACE equivalent: 13.30 Finishing of textiles	05/09/2 022
3.5	Printing	NACE equivalent: 13.30 Finishing of textiles	05/09/2 022
3.5.1	Top and yarn printing	NACE equivalent: 13.30 Finishing of textiles	05/09/2 022
3.5.2	Flat screen printing	NACE equivalent: 13.30 Finishing of textiles	05/09/2 022
3.5.3	Rotary screen printing	NACE equivalent: 13.30 Finishing of textiles	05/09/2 022
3.5.4	Inkjet printing	NACE equivalent: 13.30 Finishing of textiles	05/09/2 022
3.5.9 9	Other printing machines	NACE equivalent: 13.30 Finishing of textiles	05/09/2 022
4	Clothing and accessories manufacture	NACE equivalent: 14.1 Manufacture of wearing ap parel, except fur apparel	05/09/2 022
4.1	Cutting	NACE equivalent: 14.1 Manufacture of wearing ap parel, except fur apparel	05/09/2 022
4.2	Sewing	NACE equivalent: 14.1 Manufacture of wearing ap parel, except fur apparel	05/09/2 022
4.3	Ironing	NACE equivalent: 14.1 Manufacture of wearing ap parel, except fur apparel	05/09/2 022
4.4	Washing (clothing)	NACE equivalent: 14.1 Manufacture of wearing ap parel, except fur apparel	05/09/2 022
4.5	Dyeing (clothing)	NACE equivalent: 14.1 Manufacture of wearing ap parel, except fur apparel	05/09/2 022
4.6	Knitting (hoisiery)		05/09/2

			022
4.7	Packing		05/09/2022
4.99	Other clothing and accessories production		05/09/2022
5	Distribution		05/09/2022
6	Usage		05/09/2022
7	End of life collection	NACE equivalent: 38.32 Recovery of sorted materials	05/09/2022
8	Recycling	NACE equivalent: 38.32 Recovery of sorted materials	05/09/2022
8.1	Preliminary sorting and cleaning	NACE equivalent: 38.32 Recovery of sorted materials	05/09/2022
8.1.1	Sorting	NACE equivalent: 38.32 Recovery of sorted materials	05/09/2022
8.1.2	Sanitation	NACE equivalent: 38.32 Recovery of sorted materials	05/09/2022
8.1.3	Cleaning	NACE equivalent: 38.32 Recovery of sorted materials	05/09/2022
8.2	Disassembly/Pre-treatment	NACE equivalent: 38.32 Recovery of sorted materials	05/09/2022
8.2.1	Removal of non textile (accessories) and coated/printed parts and labels	NACE equivalent: 38.32 Recovery of sorted materials	05/09/2022
8.2.2	Cutting into batches of fabric	NACE equivalent: 38.32 Recovery of sorted materials	05/09/2022
8.2.3	Washing/cleaning	NACE equivalent: 38.32 Recovery of sorted materials	05/09/2022
8.2.4	Drying	NACE equivalent: 38.32 Recovery of sorted materials	05/09/2022
8.2.5	Shredding	NACE equivalent: 38.32 Recovery of sorted materials	05/09/2022
8.2.6	Grinding	NACE equivalent: 38.32 Recovery of sorted materials	05/09/2022
8.3	Material Recovery	NACE equivalent: 38.32 Recovery of sorted materials	05/09/2022
8.3.1	Mechanical Material Recovery	NACE equivalent: 38.32 Recovery of sorted materials	05/09/2022
8.3.1.1	pre-opening	NACE equivalent: 38.32 Recovery of sorted materials	05/09/2022
8.3.1.2	tearing	NACE equivalent: 38.32 Recovery of sorted materials	05/09/2022
8.3.1.3	fine-opening	NACE equivalent: 38.32 Recovery of sorted materials	05/09/2022
8.3.1.4	carding	NACE equivalent: 38.32 Recovery of sorted materials	05/09/2022
8.3.1.	removal of short fibres and contaminations	NACE equivalent: 38.32 Recovery of sorted materi	05/09/2

5		als	022
8.3.2	Thermo-mechanical material recovery	NACE equivalent: 38.32 Recovery of sorted materials	05/09/2022
8.3.2.1	Compounding	NACE equivalent: 38.32 Recovery of sorted materials	05/09/2022
8.3.2.2	Regranulation	NACE equivalent: 38.32 Recovery of sorted materials	05/09/2022
8.3.2.3	Solid state post-condensation	NACE equivalent: 38.32 Recovery of sorted materials	05/09/2022
8.3.3	Chemical -Cotton material recovery - pulping	NACE equivalent: 38.32 Recovery of sorted materials	05/09/2022
8.3.3.1	Dyes removal/bleaching	NACE equivalent: 38.32 Recovery of sorted materials	05/09/2022
8.3.3.2	Pulping	NACE equivalent: 38.32 Recovery of sorted materials	05/09/2022
8.3.3.3	Removal of contaminants	NACE equivalent: 38.32 Recovery of sorted materials	05/09/2022
8.3.4	Chemical - PET and PA - depolymerisation	NACE equivalent: 38.32 Recovery of sorted materials	05/09/2022
8.3.4.1	Dissolution of polymers (hydrolysis, methanolysis, glycolysis, enzymatic)	NACE equivalent: 38.32 Recovery of sorted materials	05/09/2022
8.3.4.2	Removal of contaminants	NACE equivalent: 38.32 Recovery of sorted materials	05/09/2022
8.3.4.3	Removal of colorants	NACE equivalent: 38.32 Recovery of sorted materials	05/09/2022
8.3.4.4	Separation	NACE equivalent: 38.32 Recovery of sorted materials	05/09/2022
8.3.4.5	Drying	NACE equivalent: 38.32 Recovery of sorted materials	05/09/2022
8.4	Gasification	NACE equivalent: 38.32 Recovery of sorted materials	05/09/2022
8.4.1	Air/steam gasification	NACE equivalent: 38.32 Recovery of sorted materials	05/09/2022
8.4.2	Separation/purification	NACE equivalent: 38.32 Recovery of sorted materials	05/09/2022

T306 - material circularity attribute

Indicates whether the material is virgin or comes from recycling or reuse processes

Agency name: eBIZ for TRICK

Decoding table: T306

File codes list (Generic code): http://www.ebiz.enea.it/moda-ml/repository/codelist/draft/gc_T306.xml

Code	Description	Adoption note	Date of insertion
RE	Reused material		30/08/2

U			022
SCL	Secondary raw materials	adopt this for any secondary raw material when information about the first or following loop is not available	22/07/2022
SCL1	Secondary raw materials - first loop		22/07/2022
SCLx	Secondary raw materials - loop following the first one		22/07/2022
VRG	Virgin raw material	adopt this for any virgin raw material when biobased information is not available	22/07/2022
VRGB	Virgin raw material - biobased		23/03/2023
VRGN	Virgin raw material - not biobased		23/03/2023

T307 - recycling process method

Agency name: eBIZ for TRICK

Decoding table: T307

File codes list (Generic code): http://www.ebiz.enea.it/moda-ml/repository/codelist/draft/gc_T307.xml

Code	Description	Adoption note	Date of insertion
CHMD	chemical recycling (dissolution)		28/07/2022
CHMP	chemical recycling (depolymerization)		28/07/2022
ENZ	enzymatic recycling		01/09/2022
MEC	mechanical recycling		28/07/2022
THE	thermal recycle		31/08/2022
THMC	thermo-mechanical recycling		01/09/2022

T44 - additional code type

qualifier of the additional coding of a product

Agency name: eBIZ

Decoding table: T44

File codes list (Generic code): http://www.ebiz.enea.it/moda-ml/repository/codelist/draft/gc_T44.xml

Code	Description	Adoption note	Date of insertion
CC	colour card		
CL	sales collection		
CO	company identification code		08/09/2017
DY	dye number		
LT	lot number		

MDI	Made in		08/09/2017
MS	manufacturing state		
PKG	packaging		09/09/2014
PL	product line		
RGB	RGB value		
SE	selvedge code		

T48 - garment part type

code specifying the type of component or part of a garment (sleeve, neck, ...)

Agency name: eBIZ

Decoding table: T48

File codes list (Generic code): http://www.ebiz.enea.it/moda-ml/repository/codelist/draft/gc_T48.xml

Code	Description	Adoption note	Date of insertion
BB	bottom back		01/08/2018
BF	bottom fore/front		01/08/2018
CO	collar		01/08/2018
CU	cuff		01/08/2018
DV	fore		
EM	embroidery		01/08/2018
OC	other component		01/08/2018
PO	pocket		01/08/2018
SC	back		
SL	sleeve		01/08/2018
TB	top back		01/08/2018
TF	top fore/front		01/08/2018

TRK01 - list of available services

Agency name: TRICK project

Decoding table: TRK01

File codes list (Generic code): http://www.ebiz.enea.it/moda-ml/repository/codelist/draft/gc_TRK01.xml

Code	Description	Adoption note	Date of insertion
0	Traceability		07/09/2022
1	PCO, Preferential Origin certification		07/09/2022
2	Circular Manufacturing assessment		07/09/2022

3	PEF and environmental footprint		07/09/2022
4	Health protection assessment		07/09/2022
5	Social and Ethical protection assessment		07/09/2022

TRK02 - list of services functions

Agency name: TRICK project

Decoding table: TRK02

File codes list (Generic code): http://www.ebiz.enea.it/moda-ml/repository/codelist/draft/gc_TRK02.xml

Code	Description	Adoption note	Date of insertion
activate	service activation		07/09/2022
execution	service execution		07/09/2022
getinfo	getting information from the service		07/09/2022
proposedreport	proposal for the final report		07/09/2022
reportapproval	final report approved		07/09/2022
reportrejected	final report rejected		07/09/2022
setinfo	uploading information to the service		07/09/2022